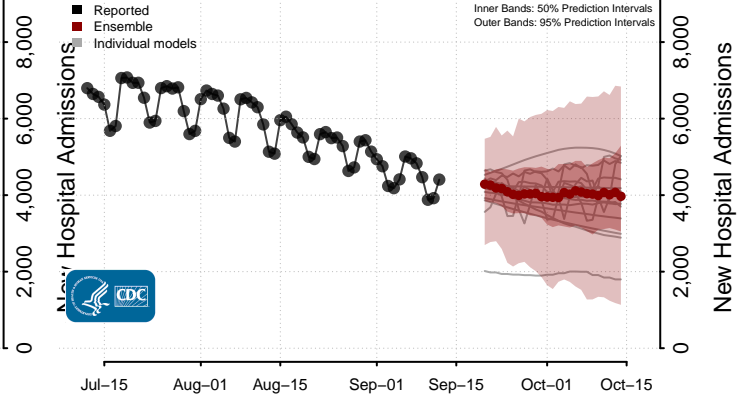
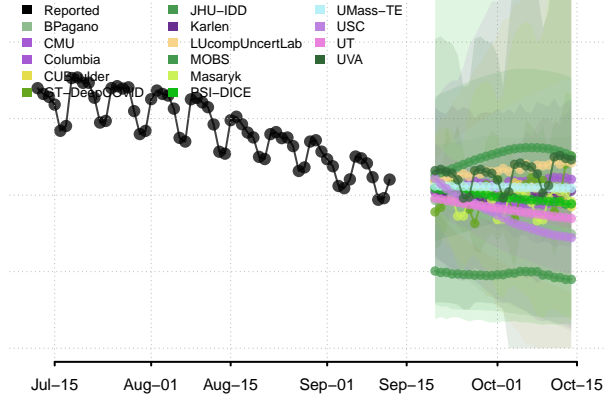
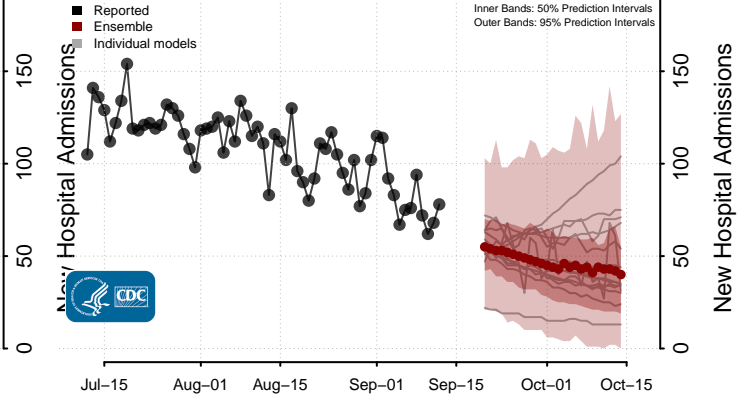
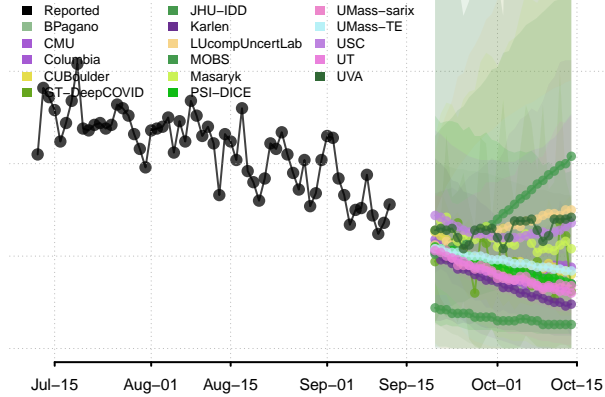


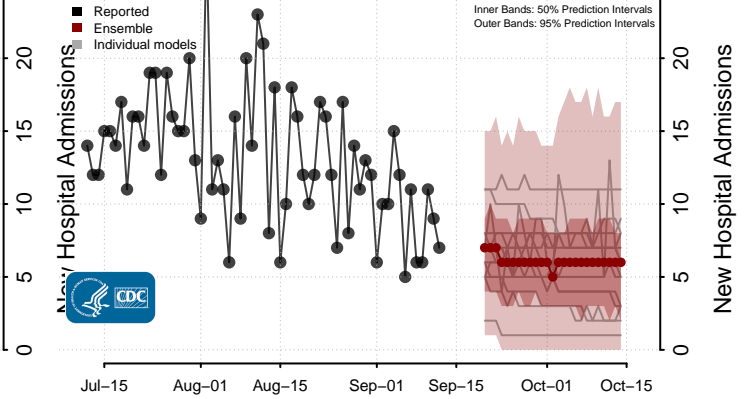
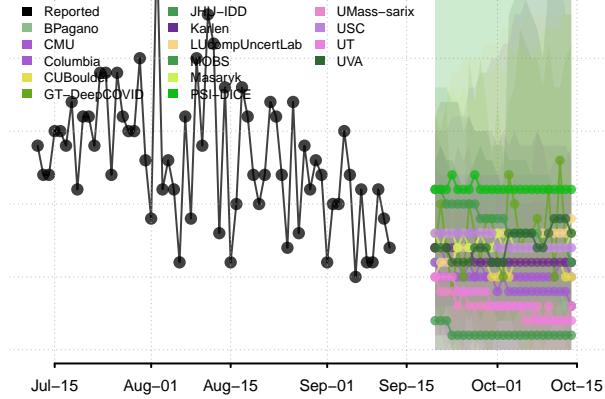
National



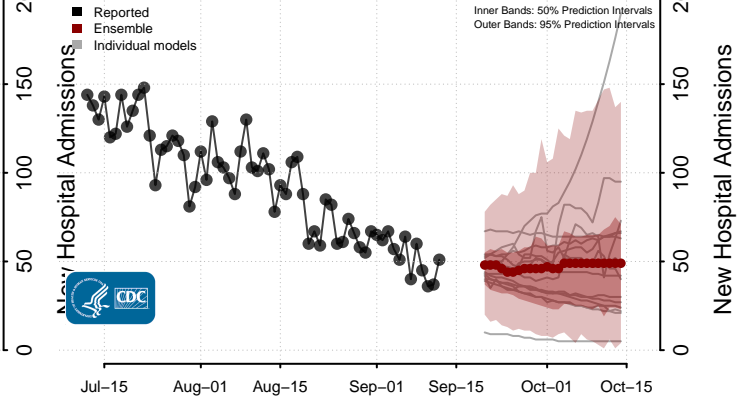
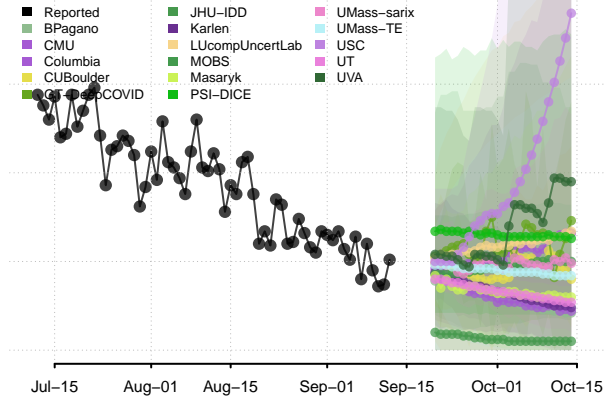
Alabama*



Alaska

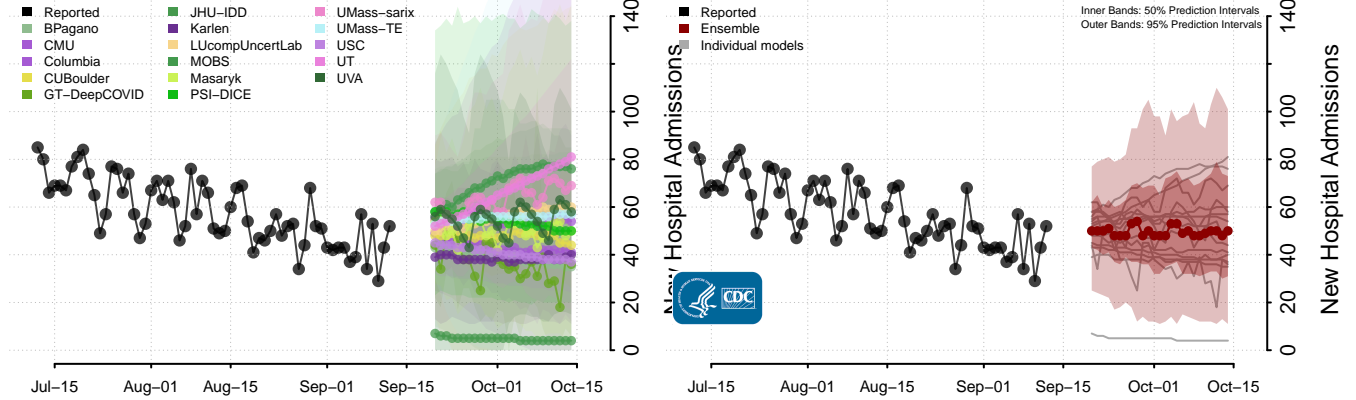


Arizona

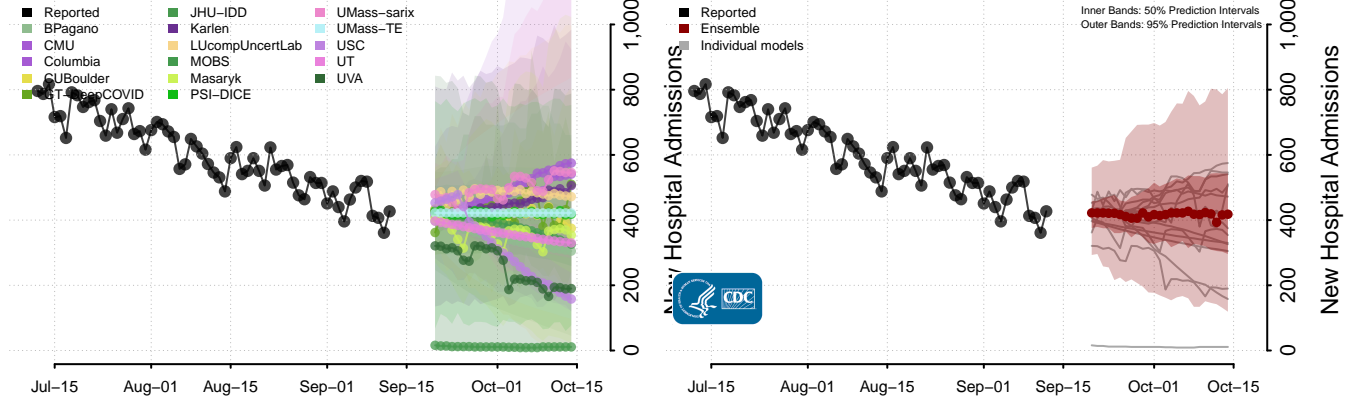


*New daily confirmed COVID-19 hospital admissions may decrease in this location over the next four weeks. For these locations, the ensemble forecast indicates a median daily probability of 0.75 or greater that fewer hospital admissions will be reported in the last seven days of the forecast than the median in the last seven days of reported data.

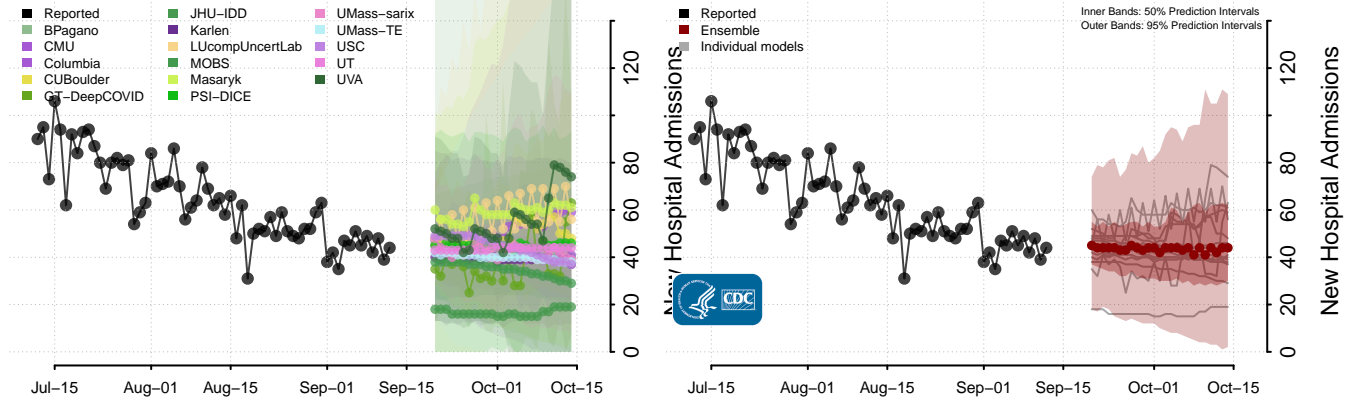
Arkansas



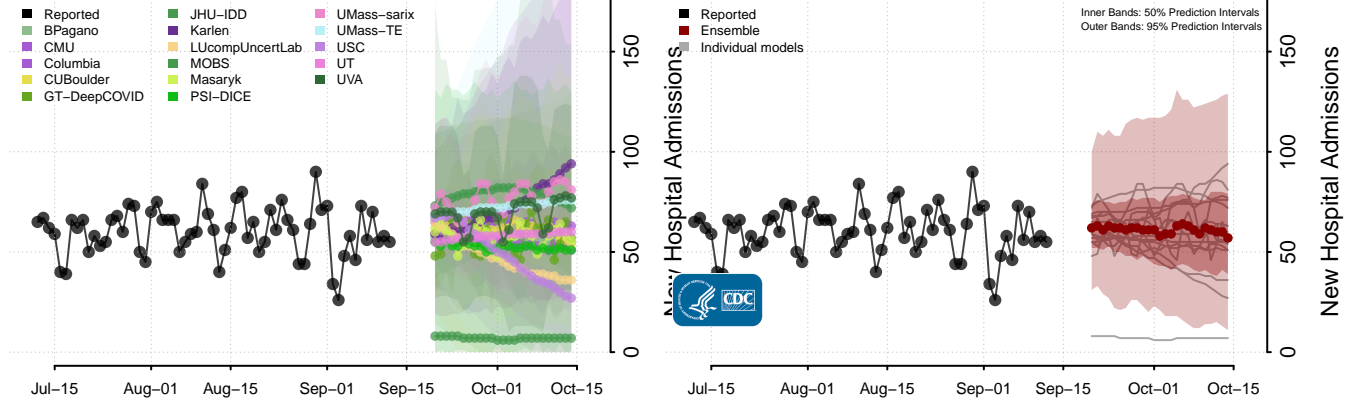
California



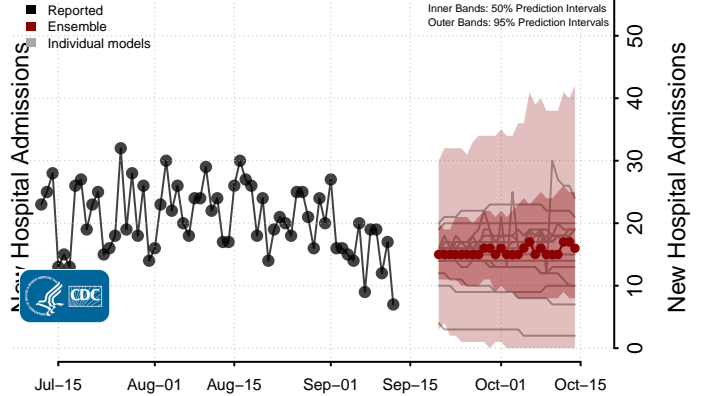
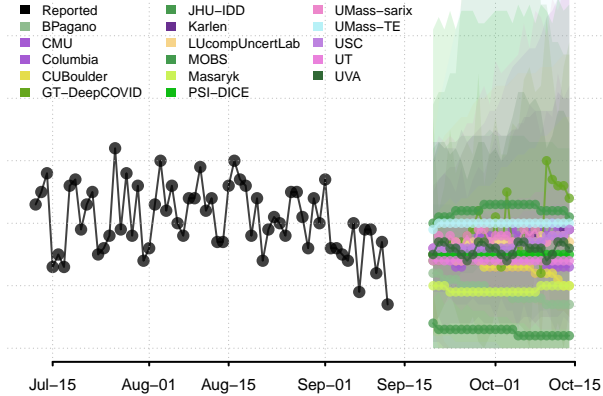
Colorado



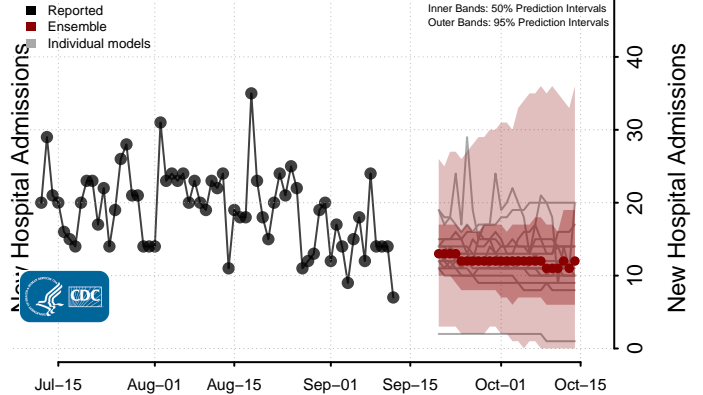
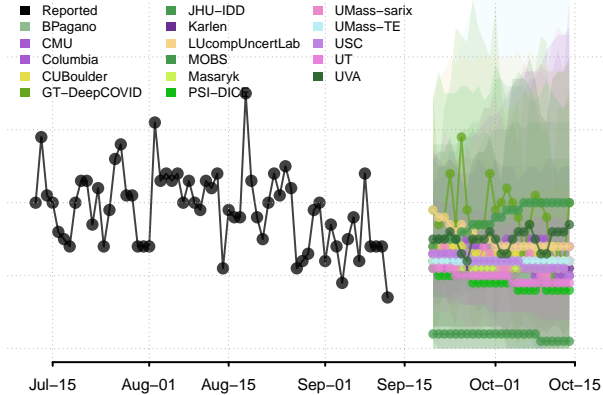
Connecticut



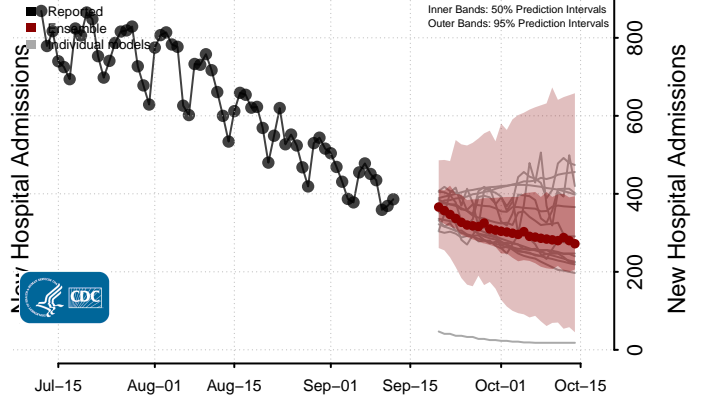
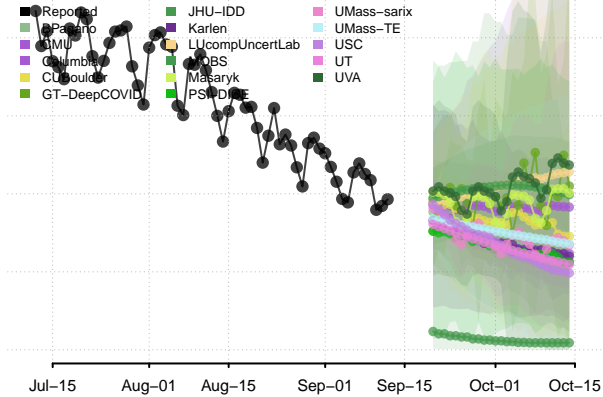
Delaware



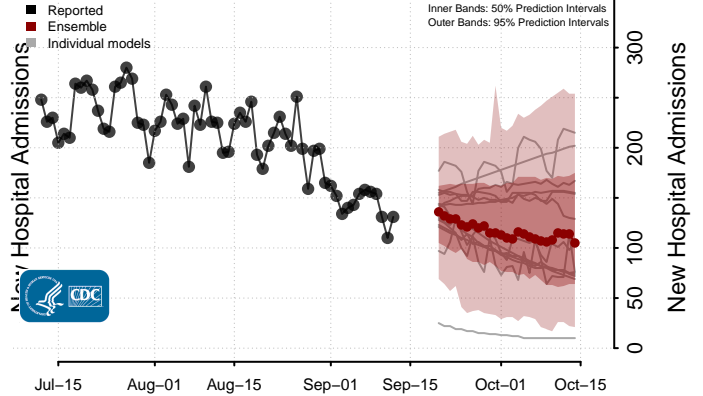
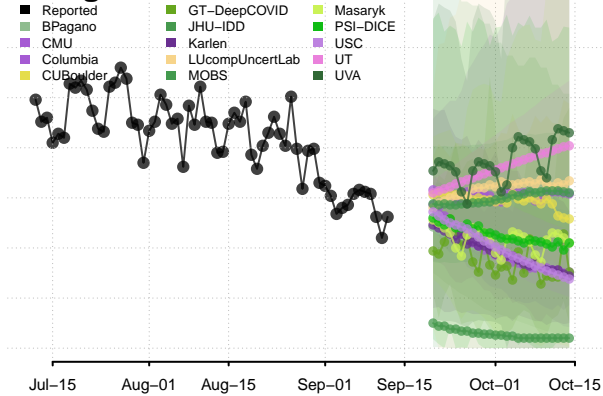
District of Columbia



Florida*

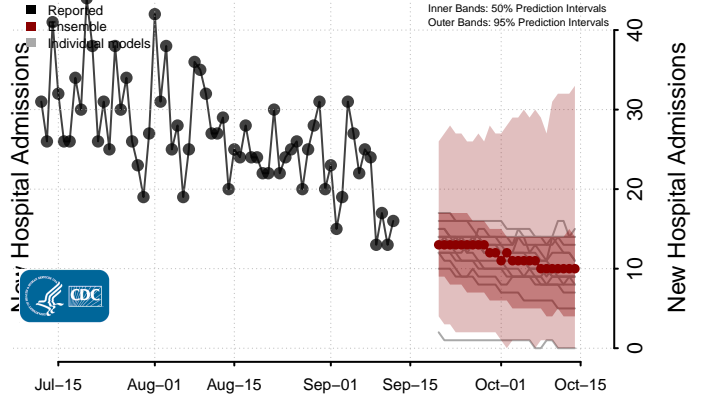
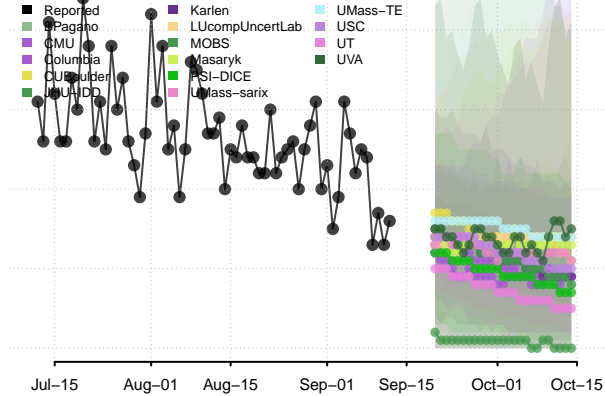


Georgia

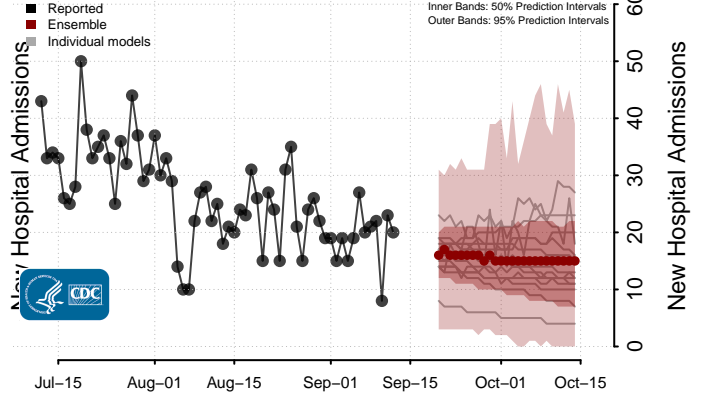
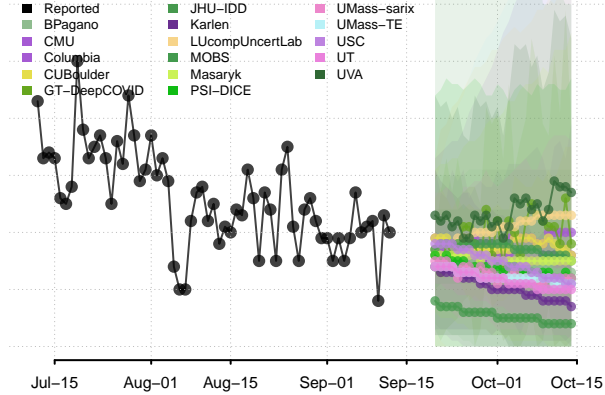


*New daily confirmed COVID-19 hospital admissions may decrease in this location over the next four weeks. For these locations, the ensemble forecast indicates a median daily probability of 0.75 or greater that fewer hospital admissions will be reported in the last seven days of the forecast than the median in the last seven days of reported data.

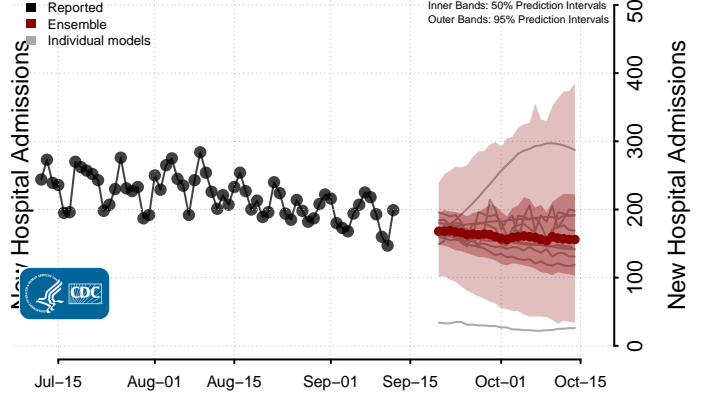
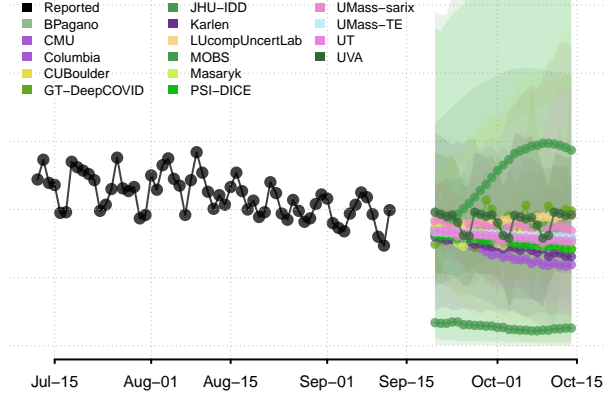
Hawaii



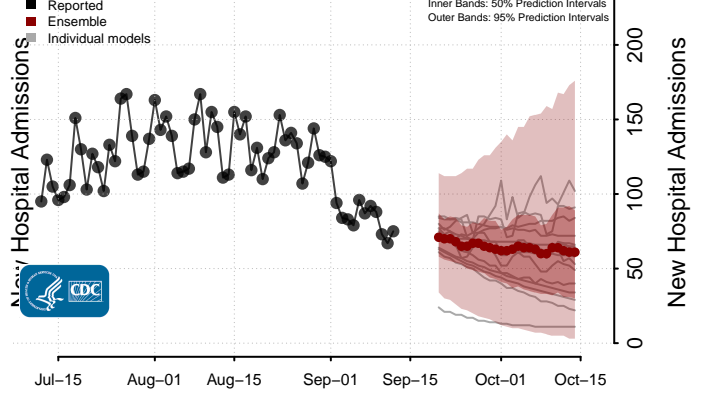
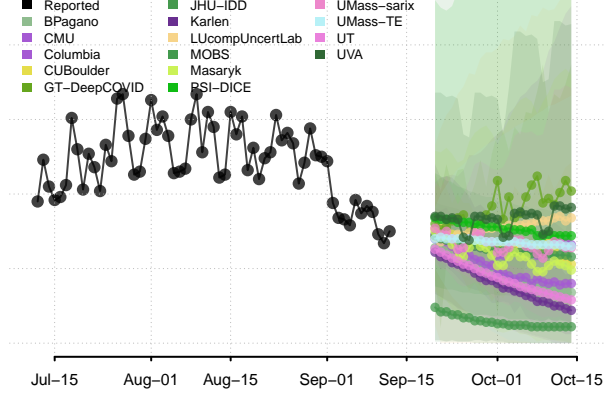
Idaho



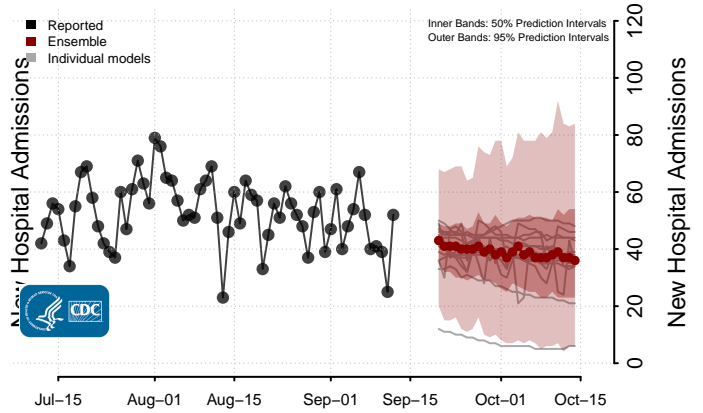
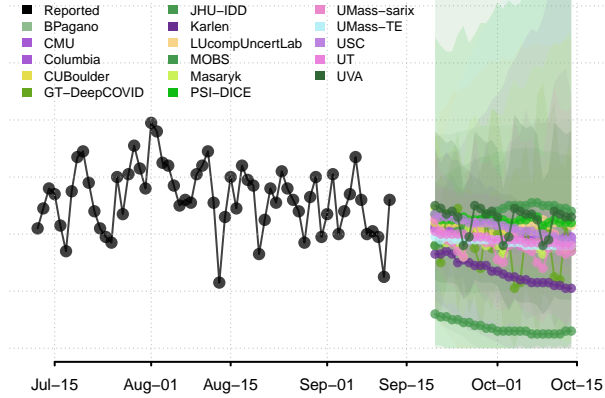
Illinois



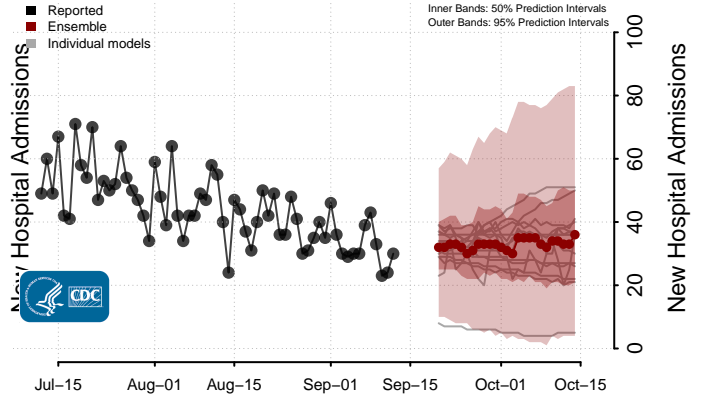
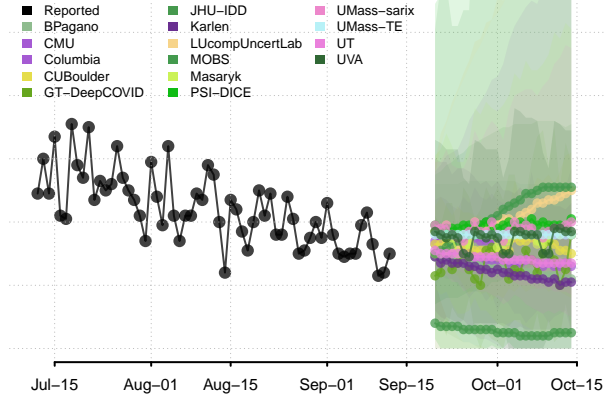
Indiana



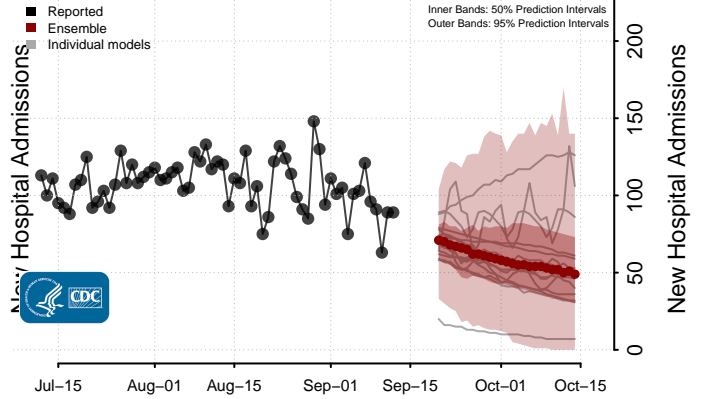
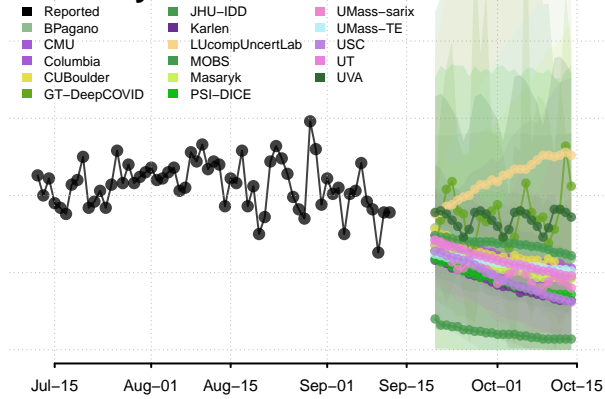
Iowa



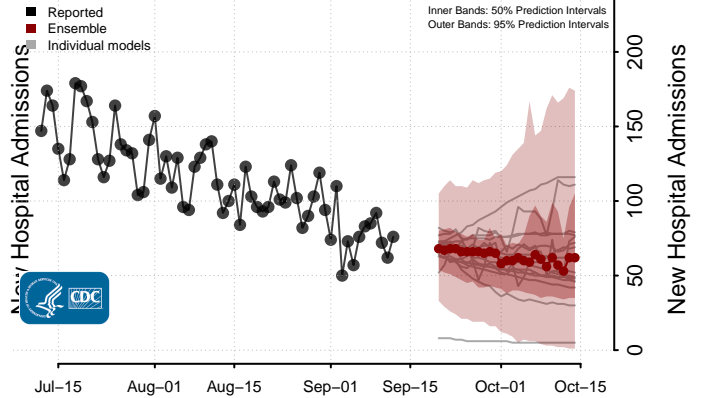
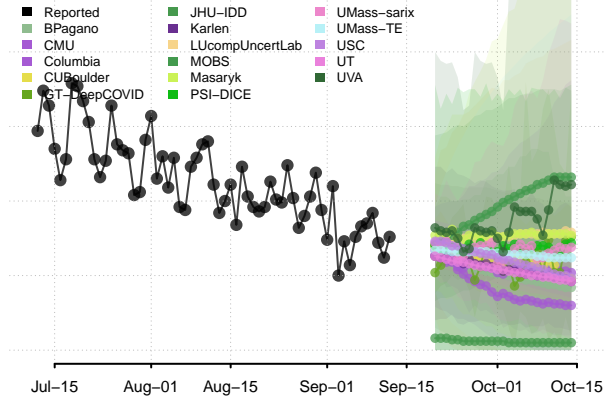
Kansas



Kentucky*

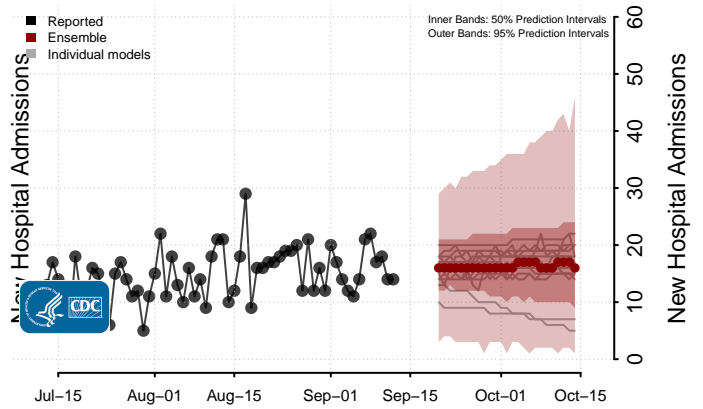
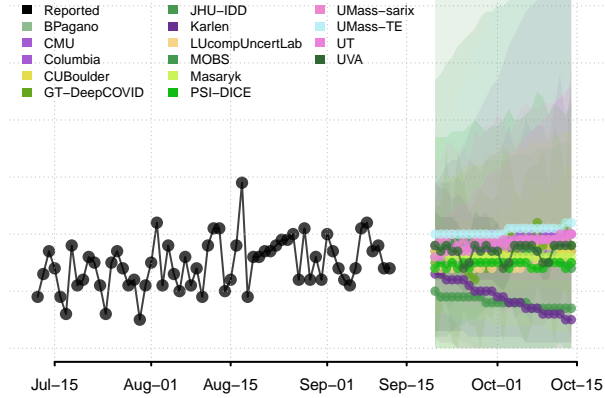


Louisiana

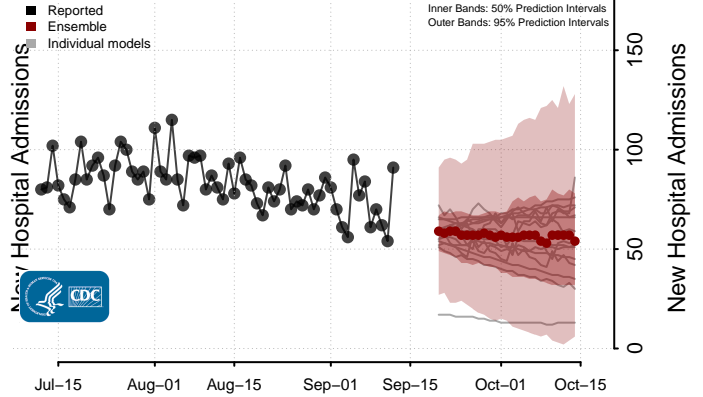
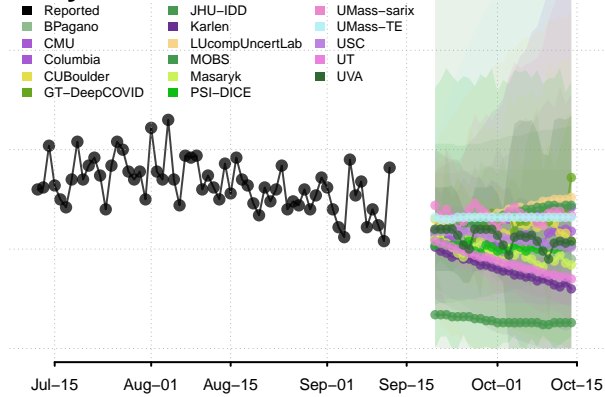


*New daily confirmed COVID-19 hospital admissions may decrease in this location over the next four weeks. For these locations, the ensemble forecast indicates a median daily probability of 0.75 or greater that fewer hospital admissions will be reported in the last seven days of the forecast than the median in the last seven days of reported data.

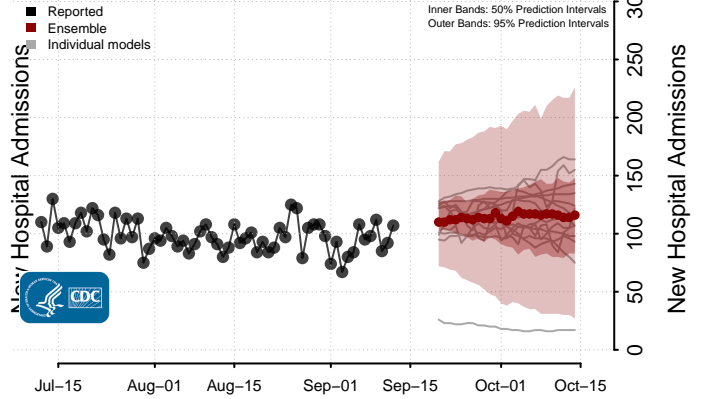
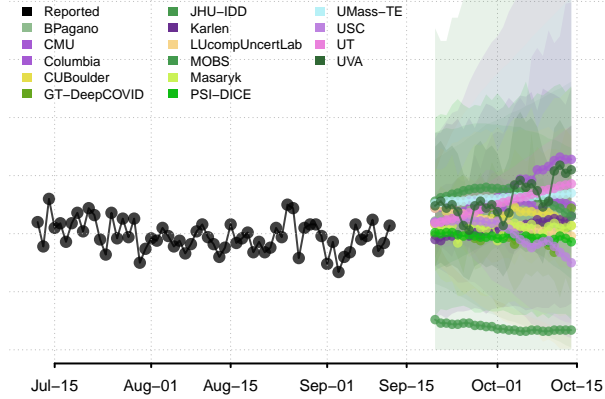
Maine



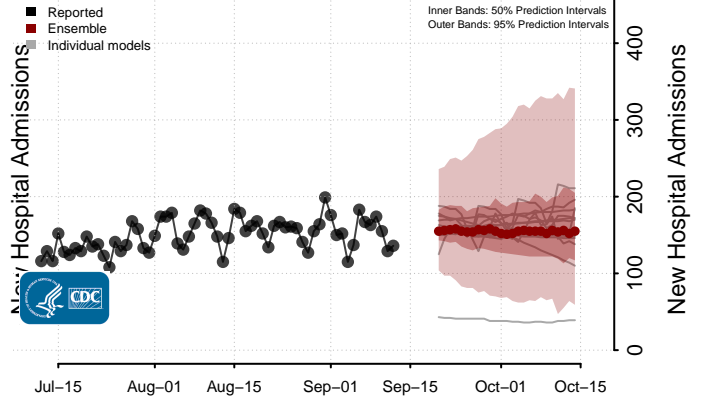
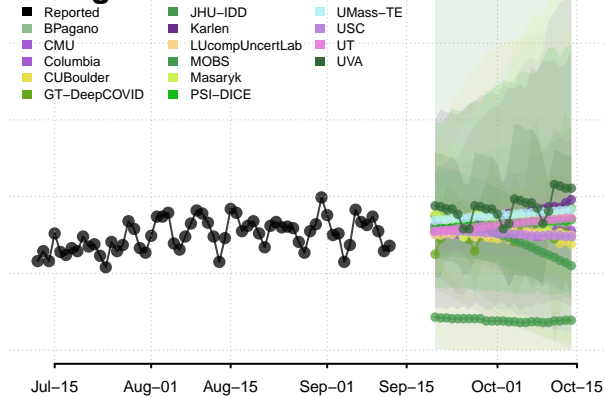
Maryland



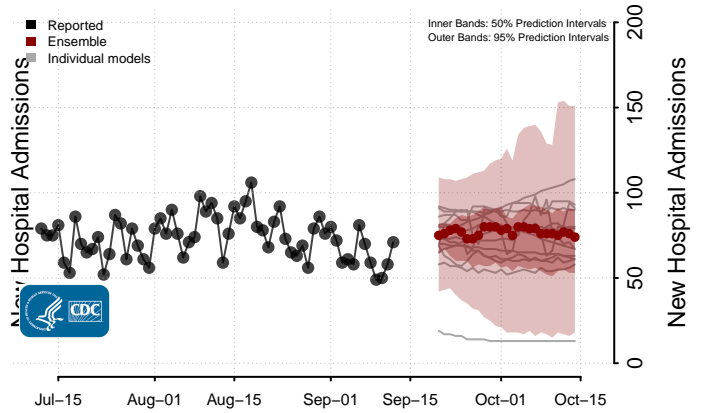
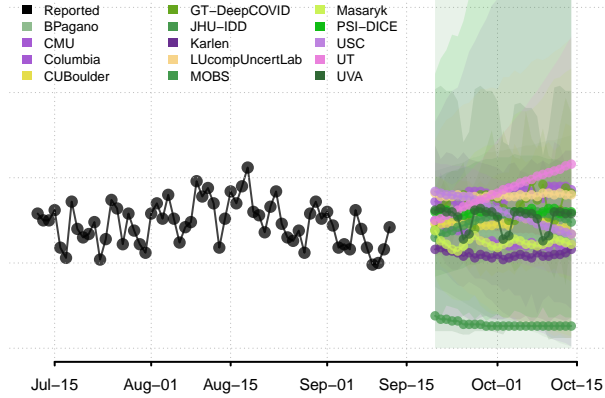
Massachusetts



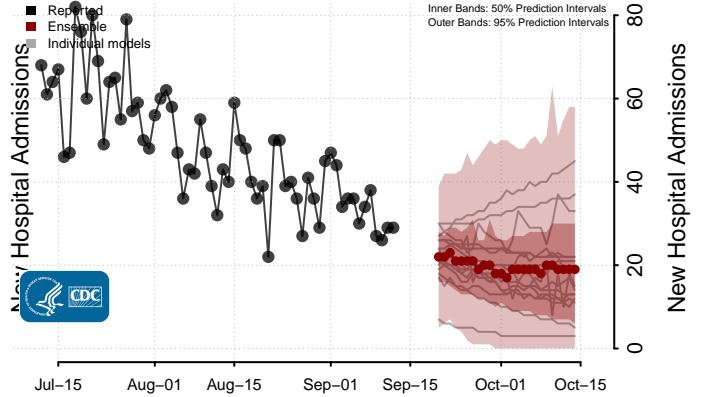
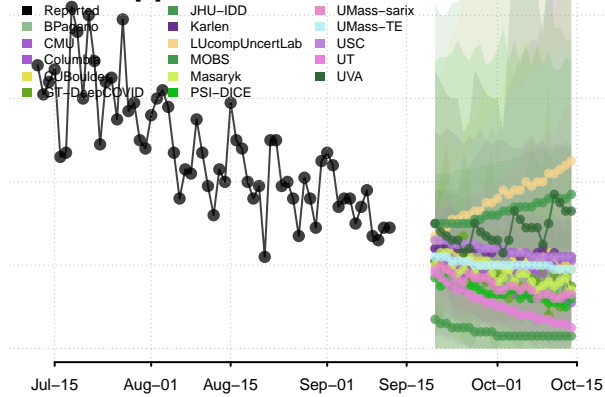
Michigan



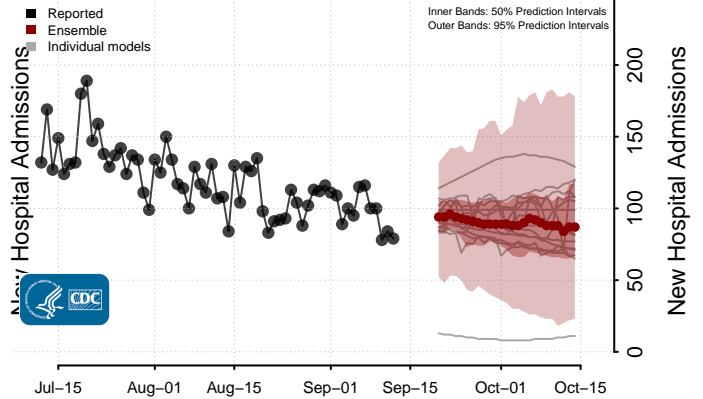
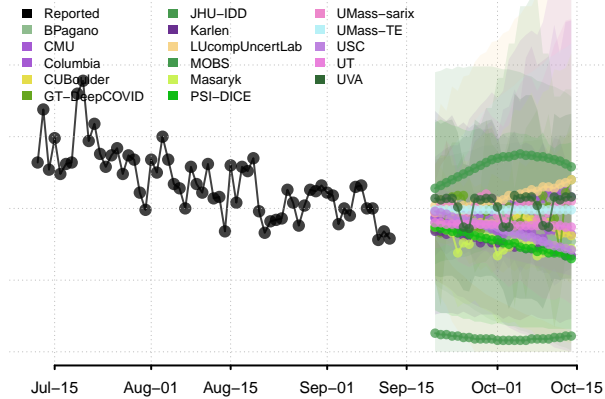
Minnesota



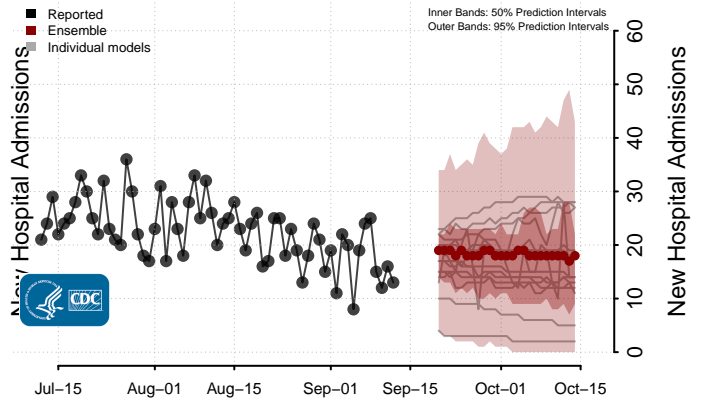
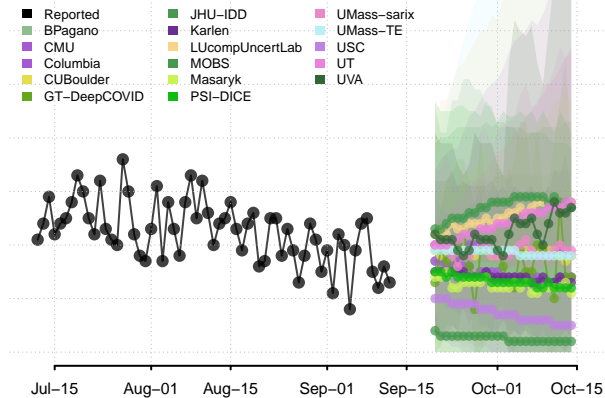
Mississippi



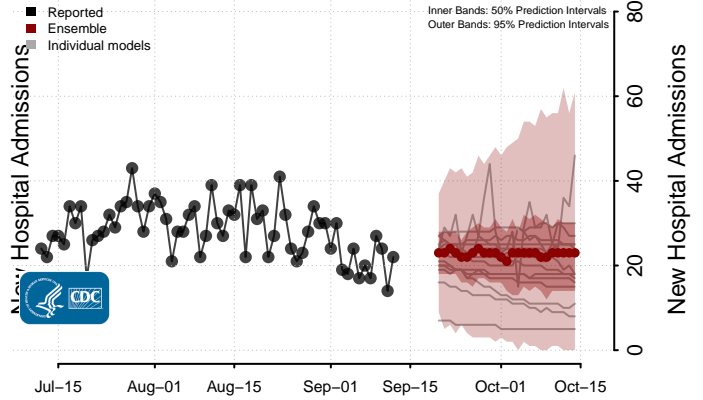
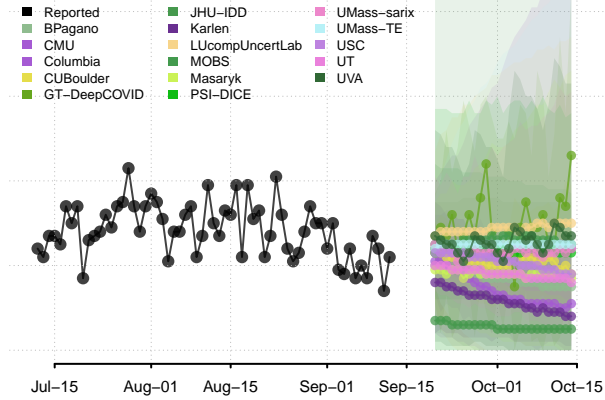
Missouri



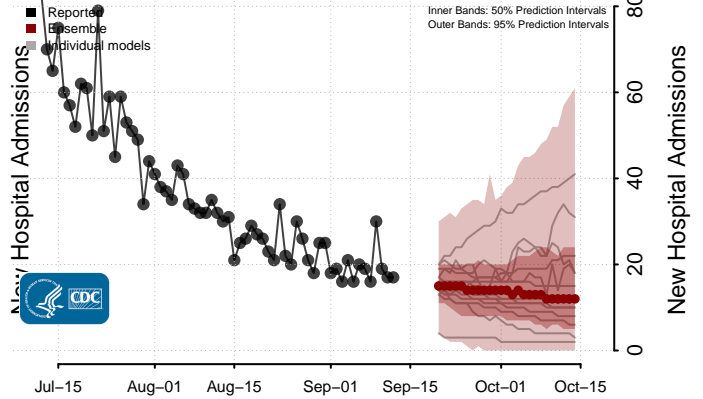
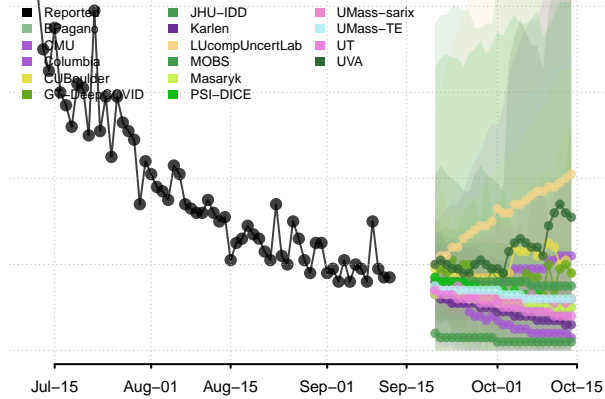
Montana



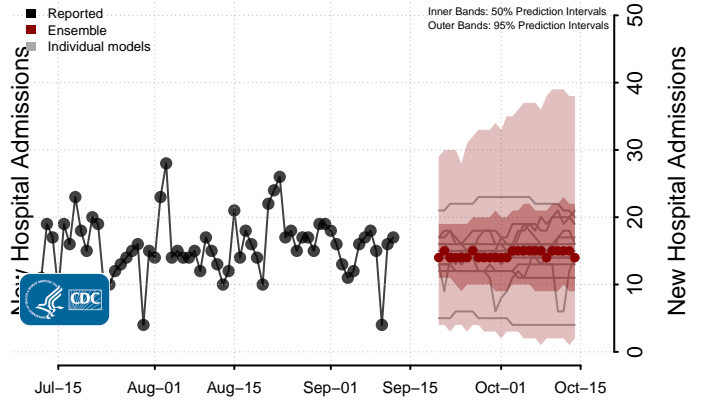
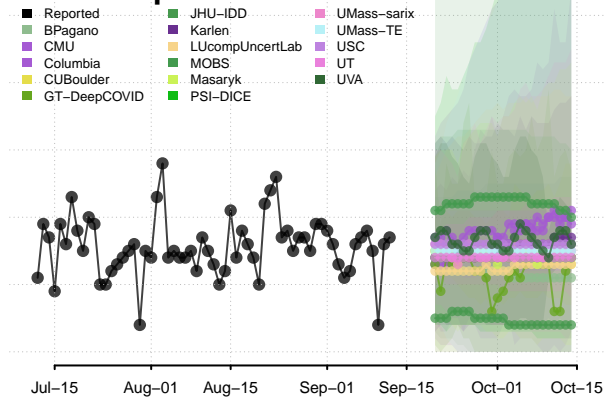
Nebraska



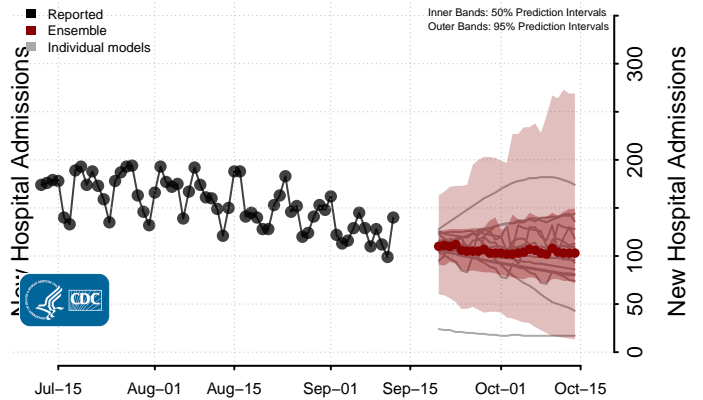
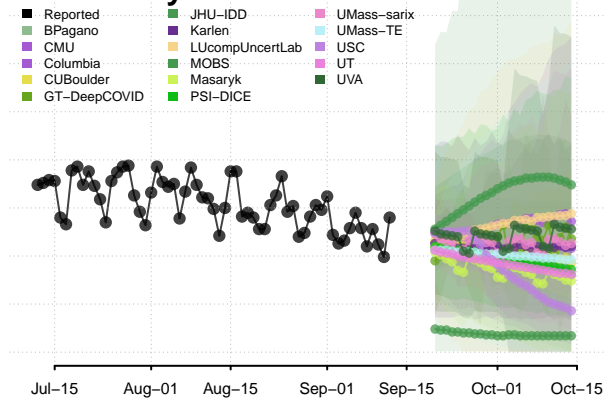
Nevada



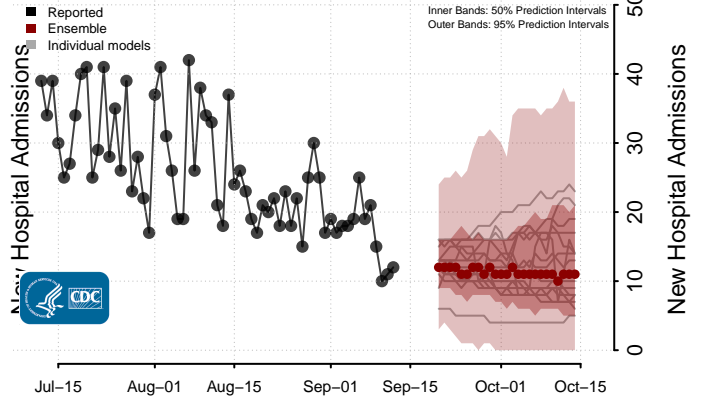
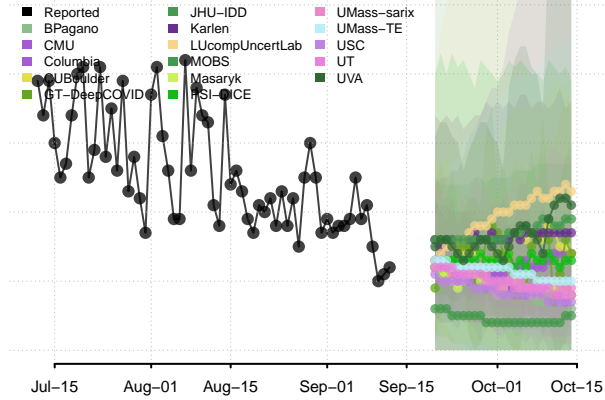
New Hampshire



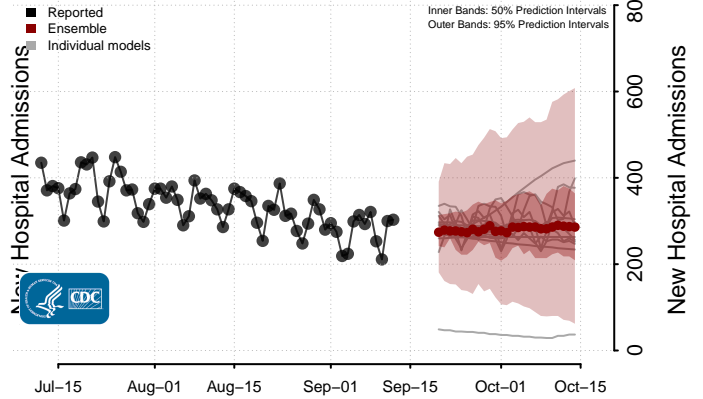
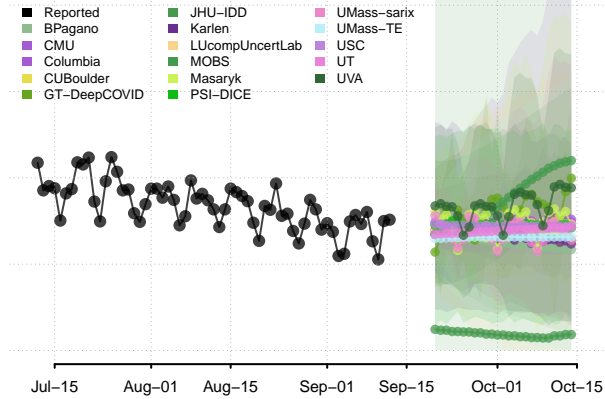
New Jersey



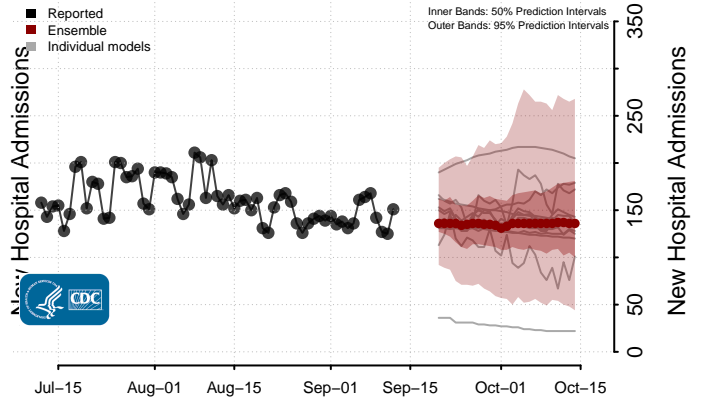
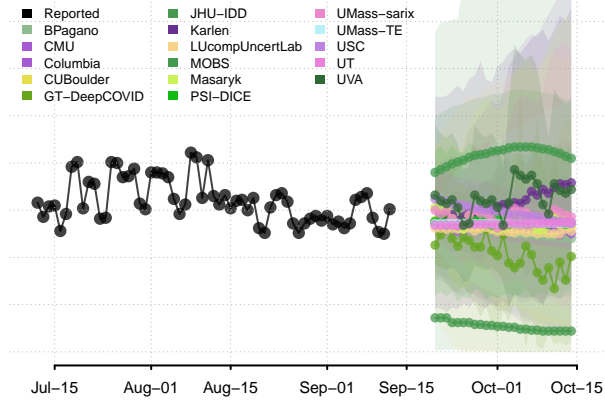
New Mexico



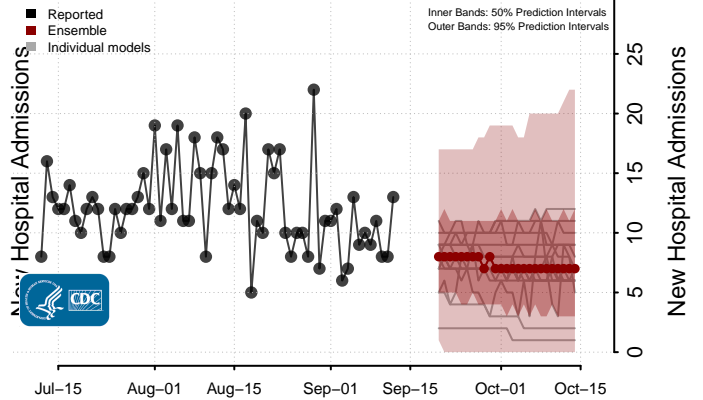
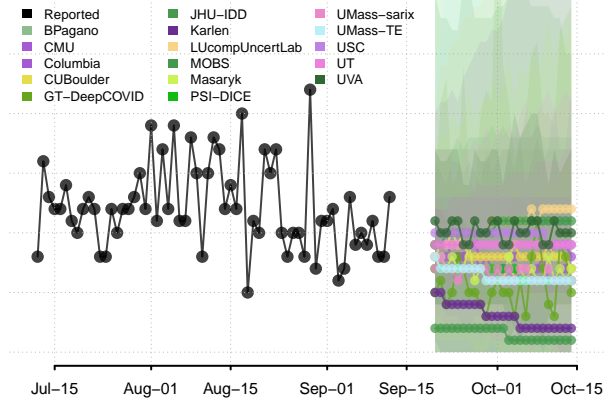
New York



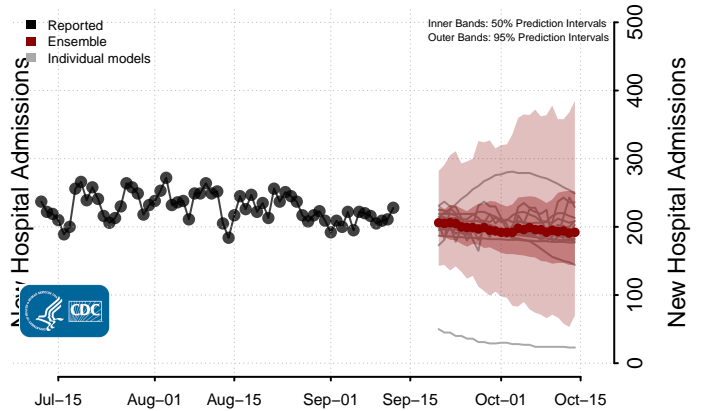
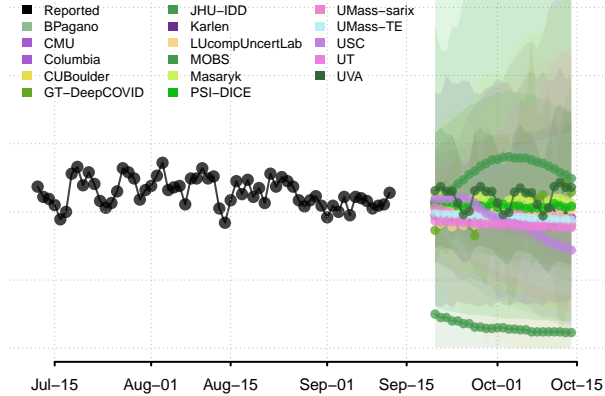
North Carolina



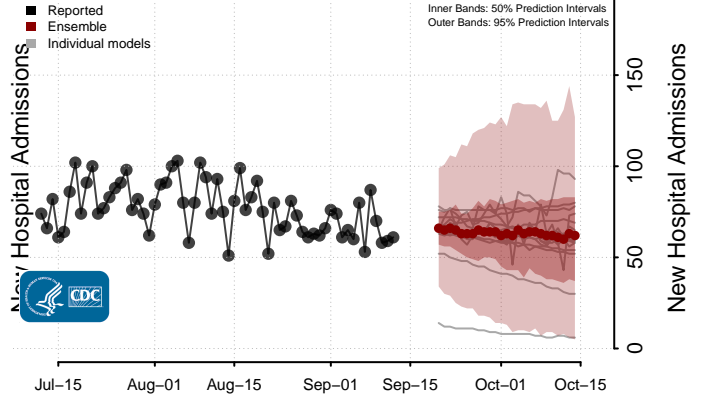
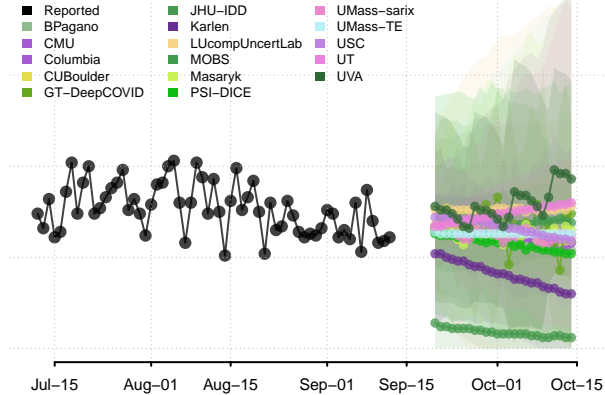
North Dakota



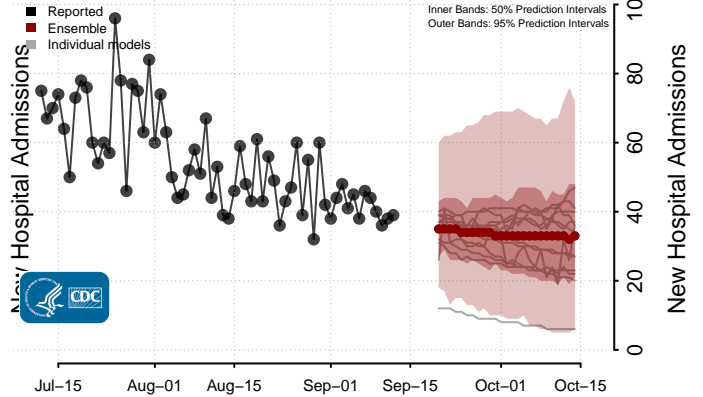
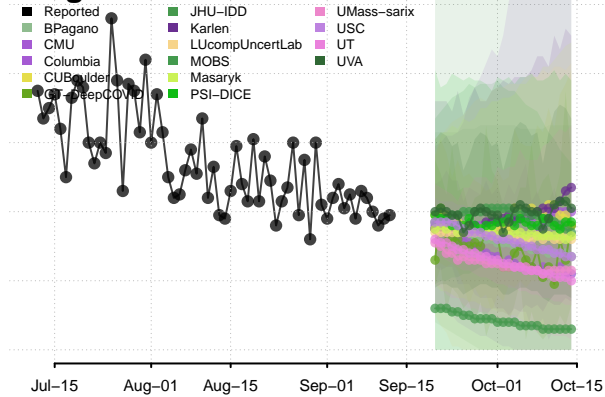
Ohio



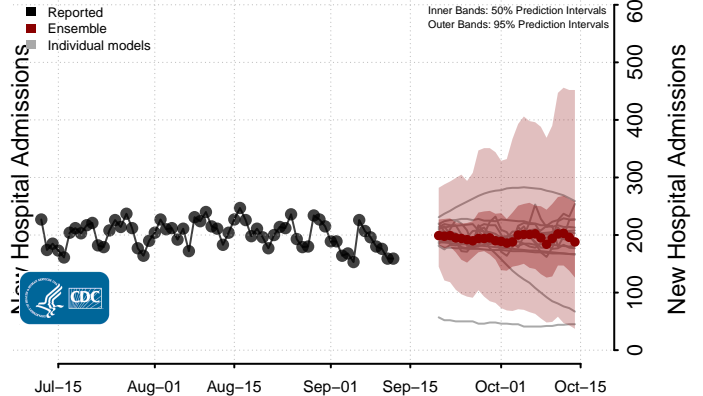
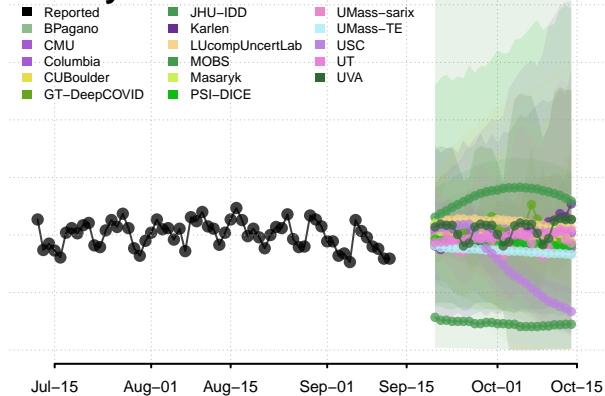
Oklahoma



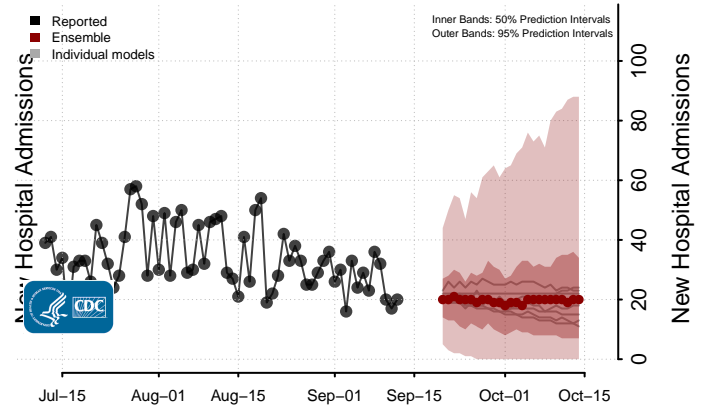
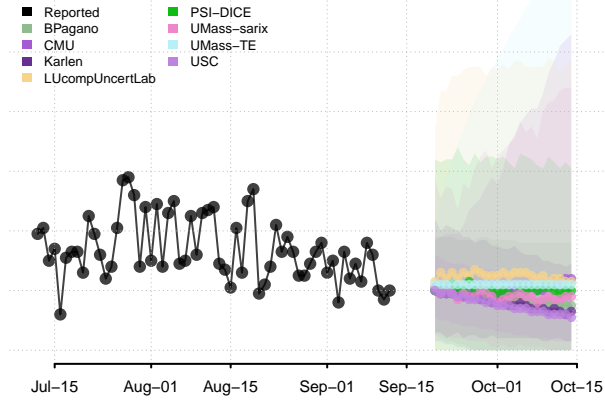
Oregon



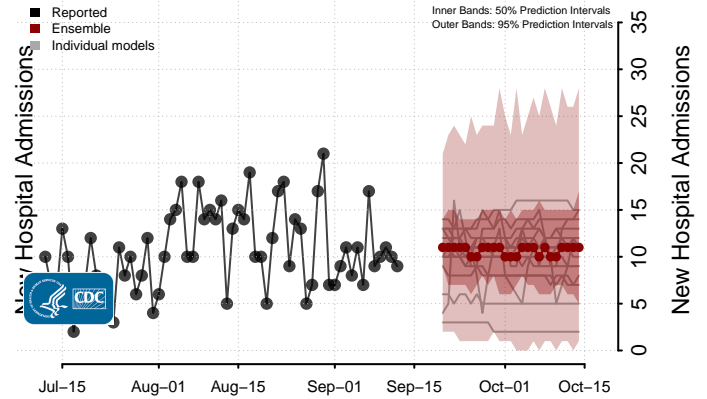
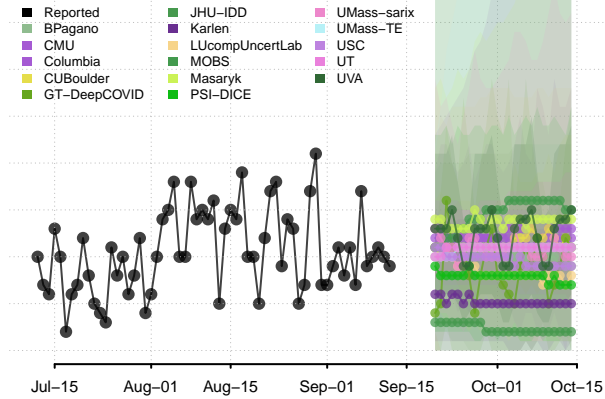
Pennsylvania



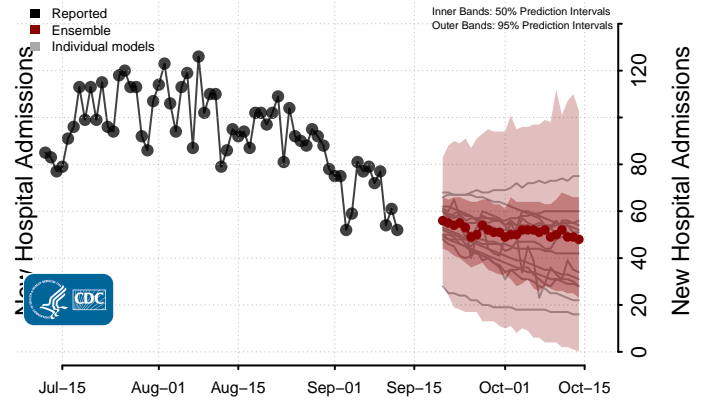
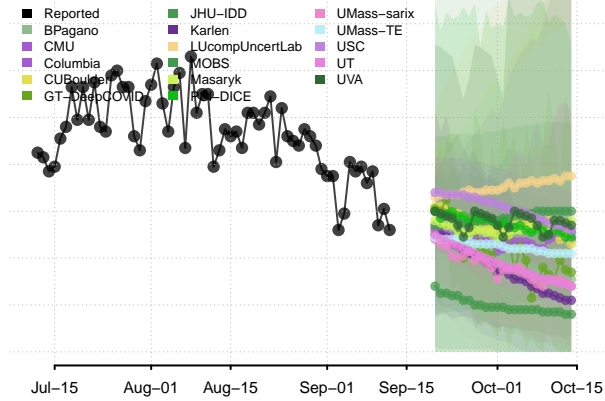
Puerto Rico



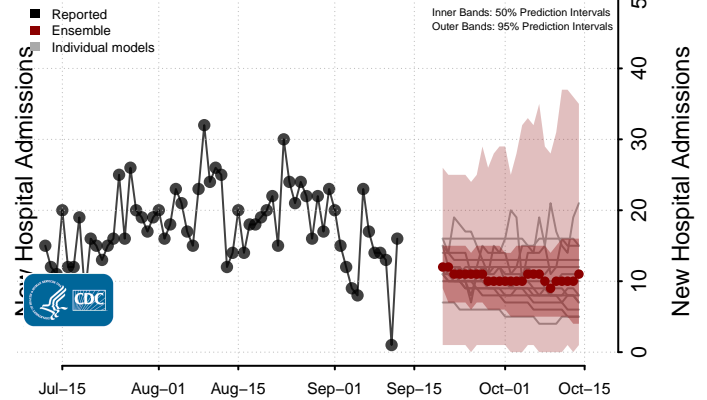
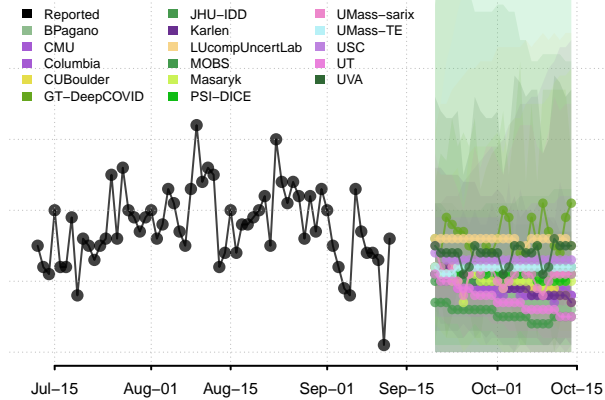
Rhode Island



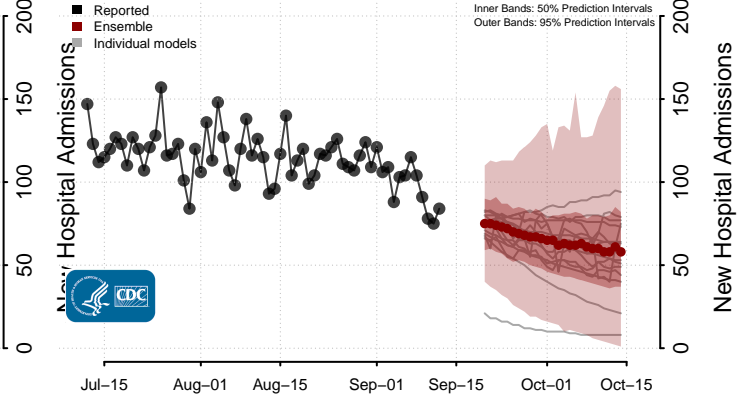
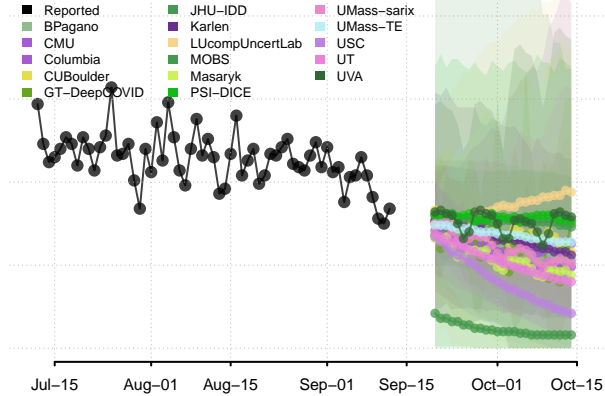
South Carolina



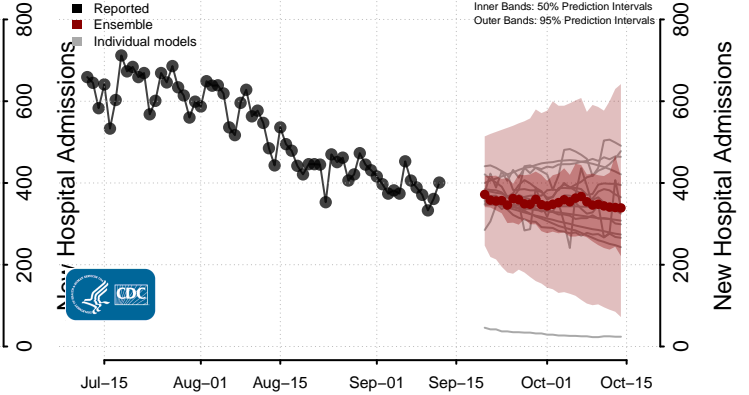
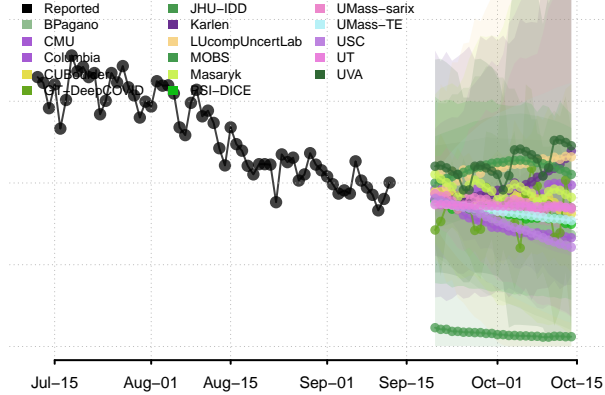
South Dakota



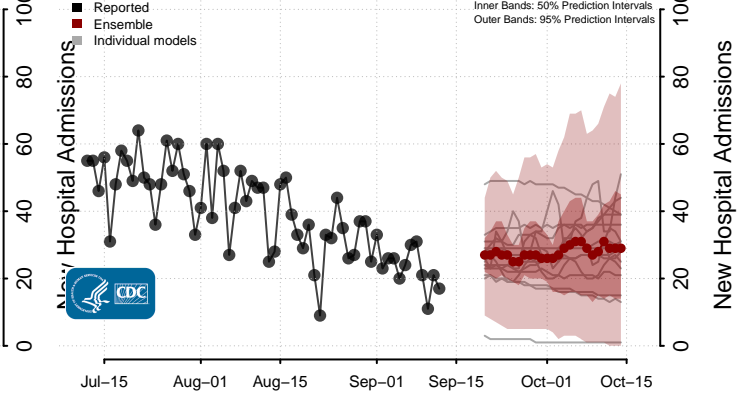
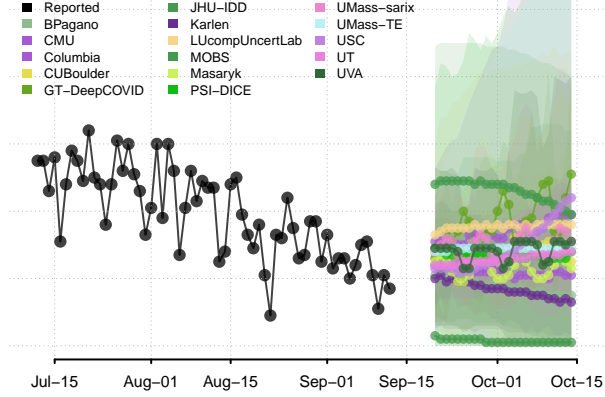
Tennessee*



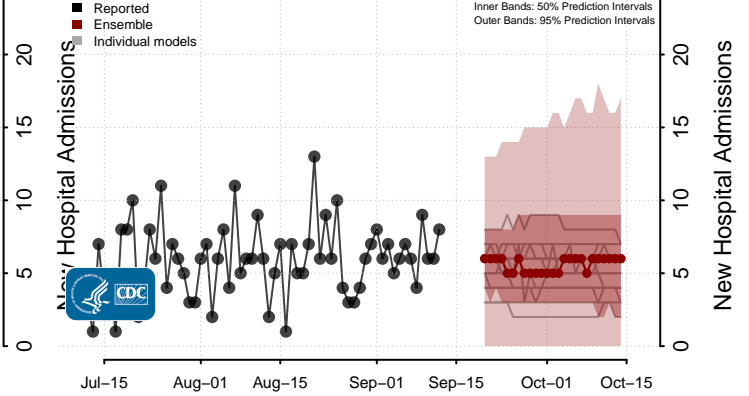
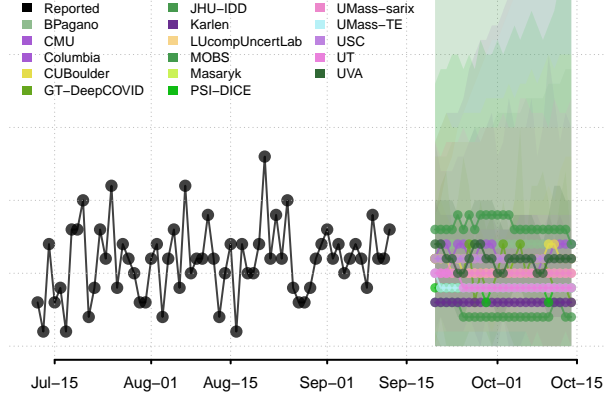
Texas



Utah

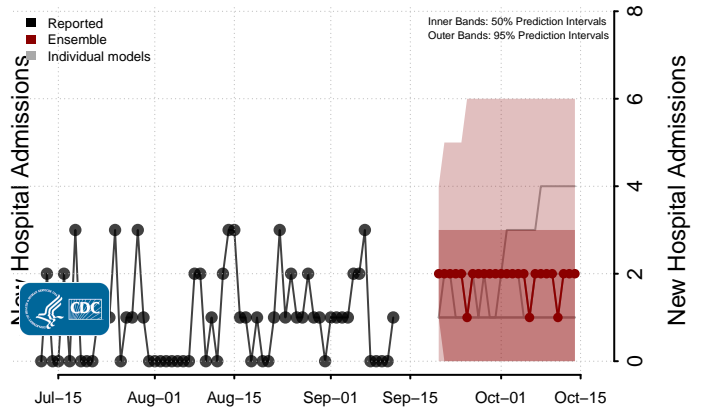
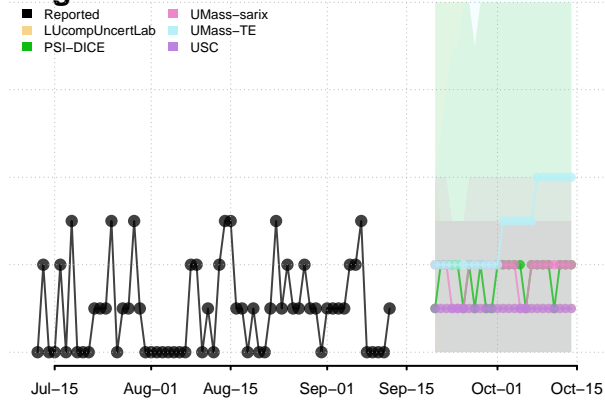


Vermont

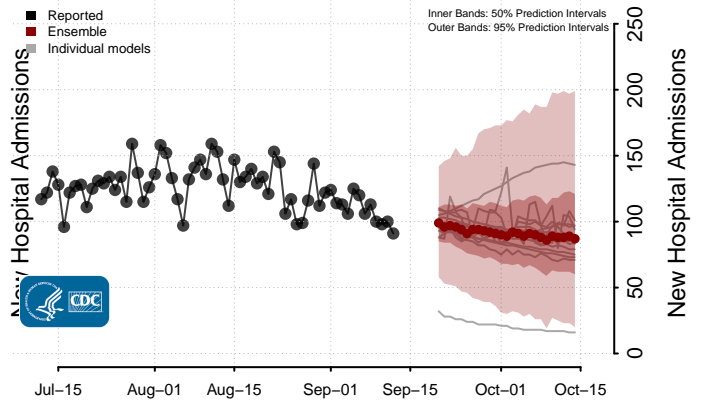
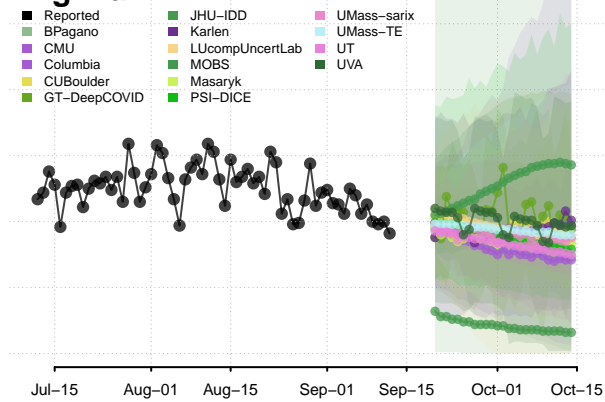


*New daily confirmed COVID-19 hospital admissions may decrease in this location over the next four weeks. For these locations, the ensemble forecast indicates a median daily probability of 0.75 or greater that fewer hospital admissions will be reported in the last seven days of the forecast than the median in the last seven days of reported data.

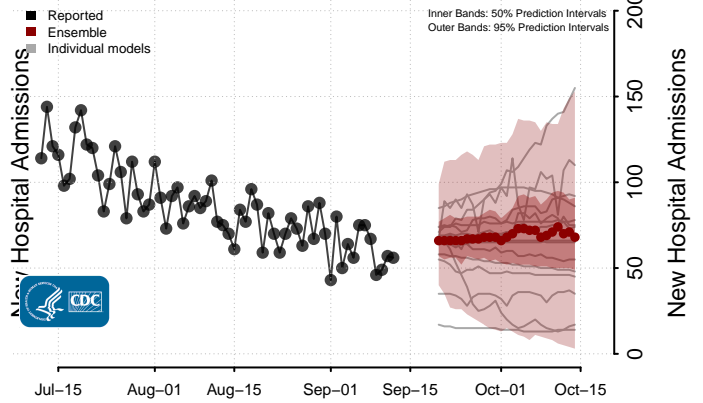
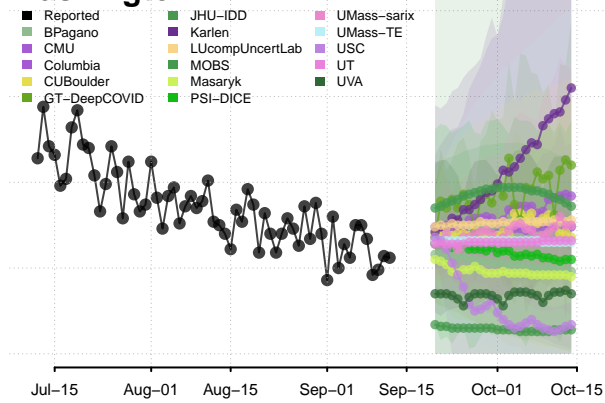
Virgin Islands



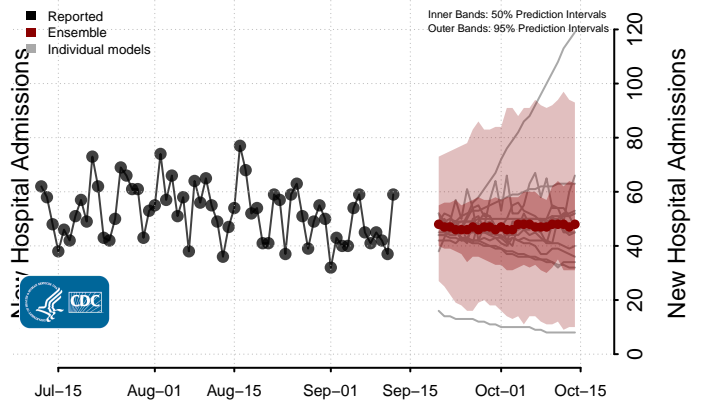
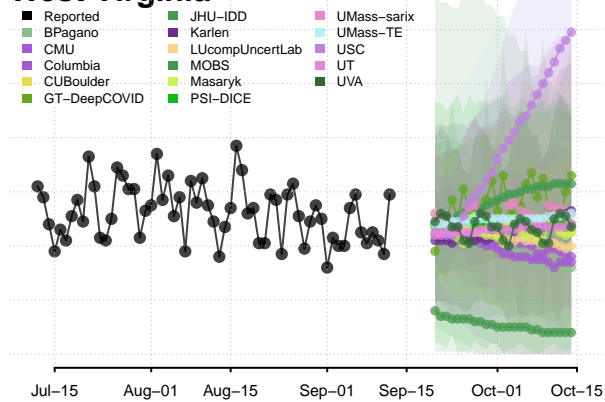
Virginia



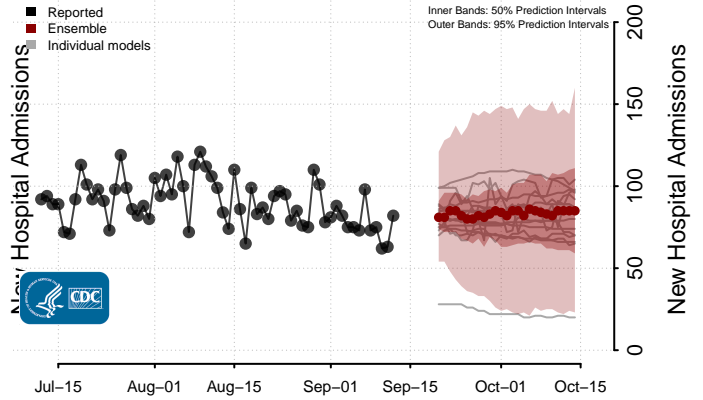
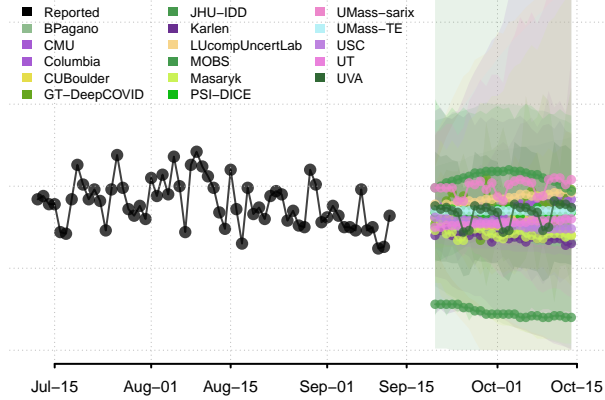
Washington



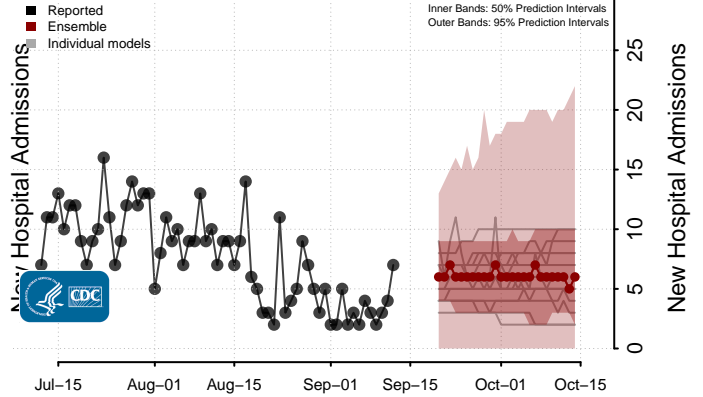
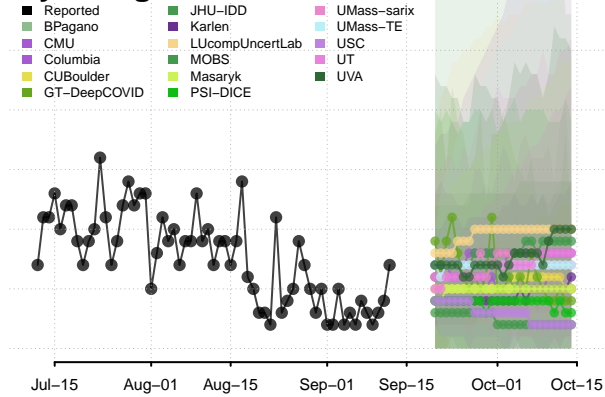
West Virginia



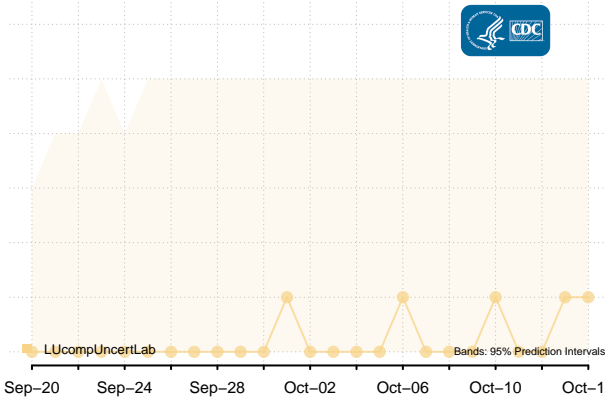
Wisconsin



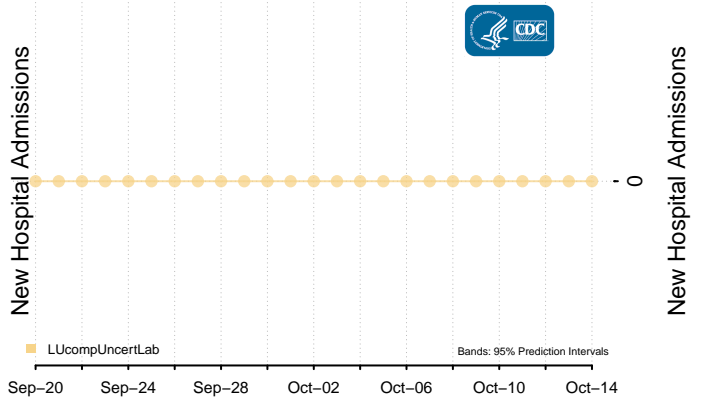
Wyoming



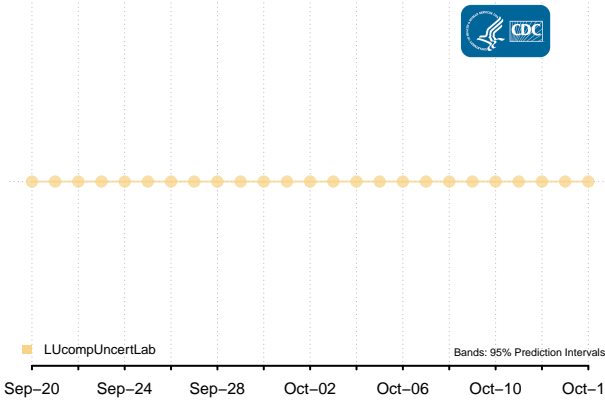
American Samoa***



Guam***



Northern Mariana Islands***



New Hospital Admissions

New Hospital Admissions

New Hospital Admissions

New Hospital Admissions