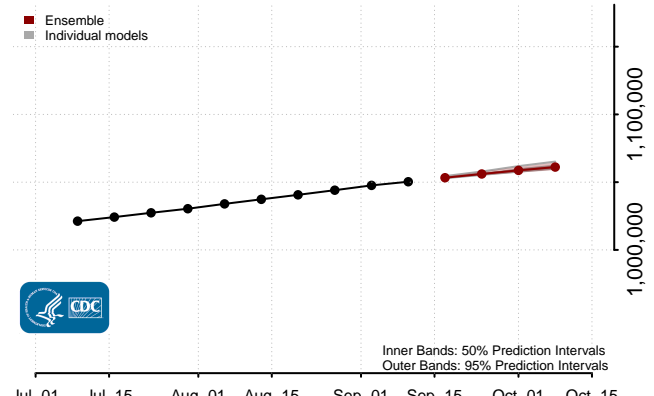
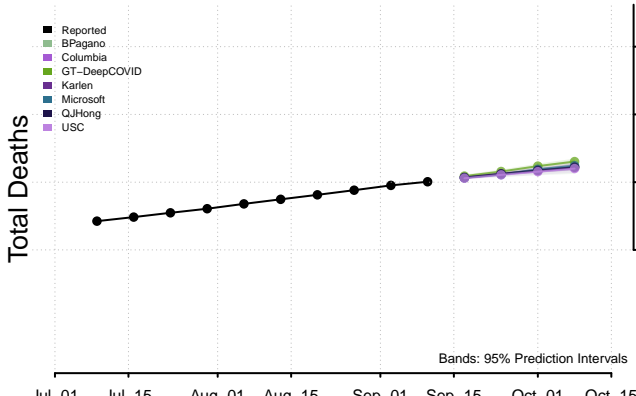
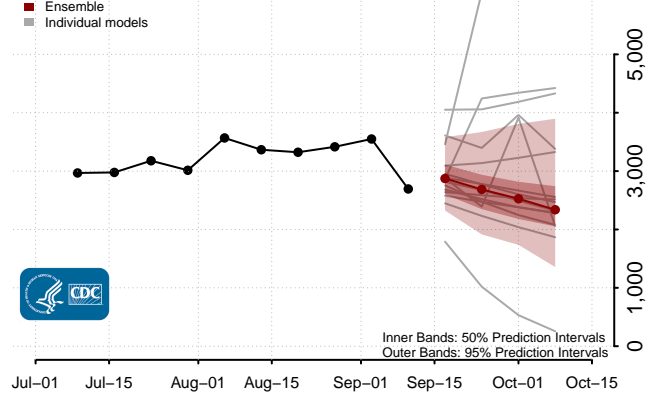
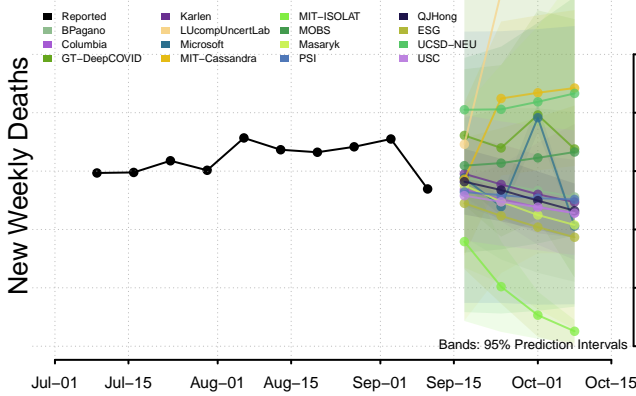
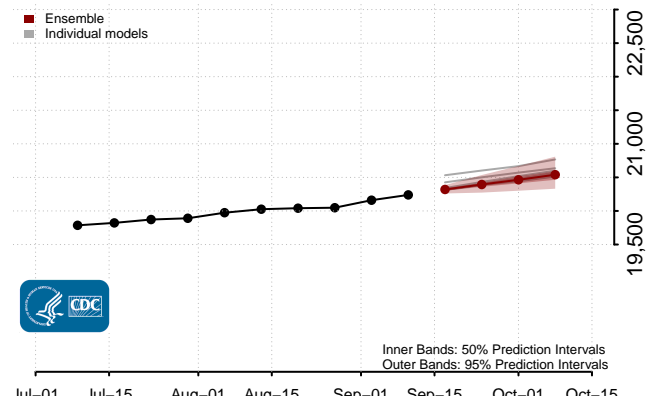
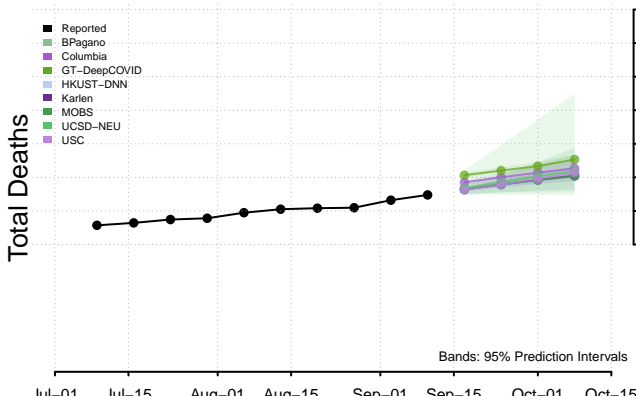
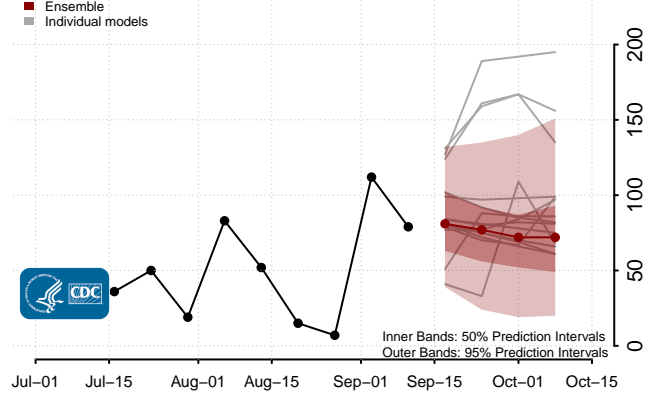
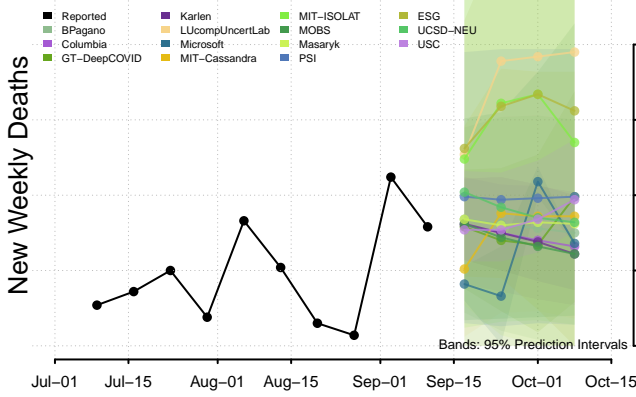


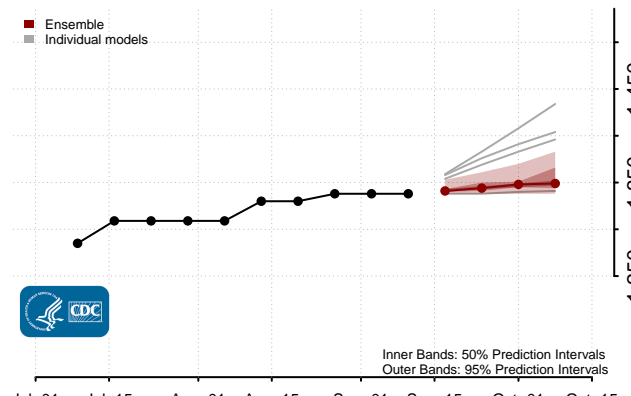
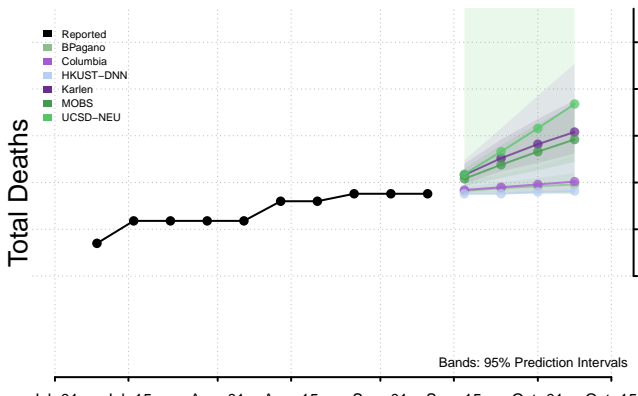
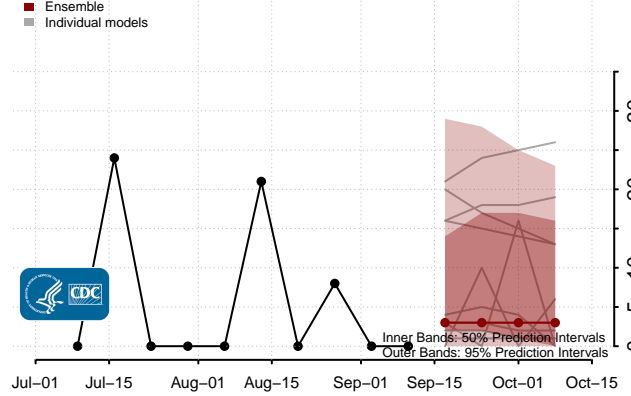
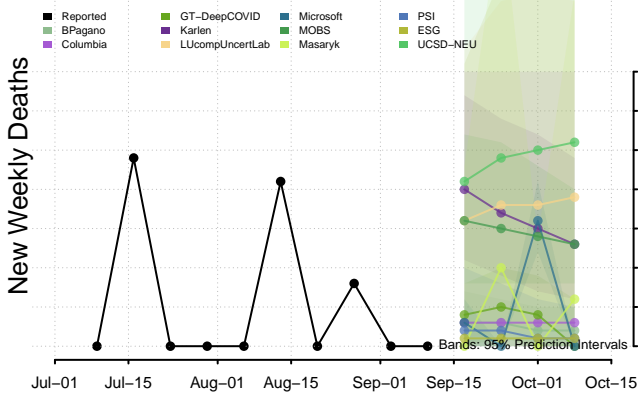
National



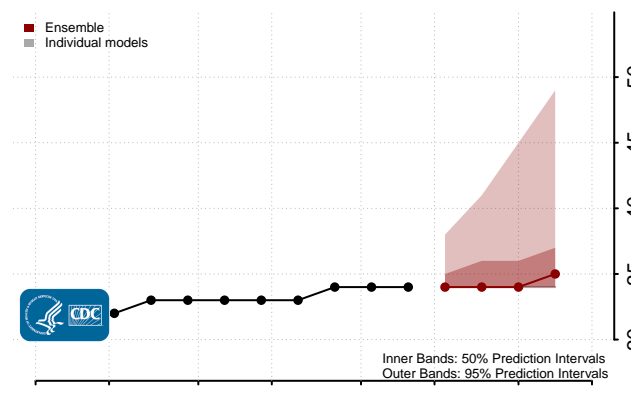
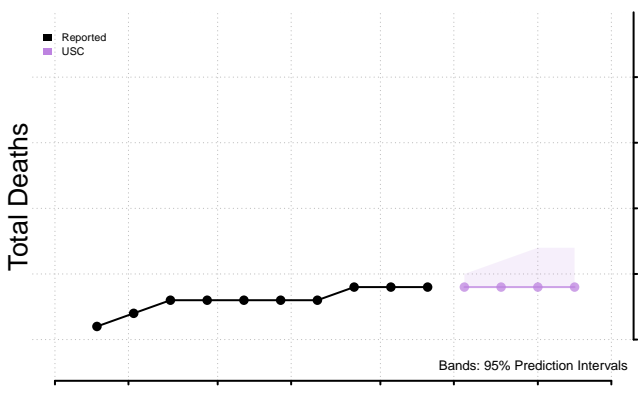
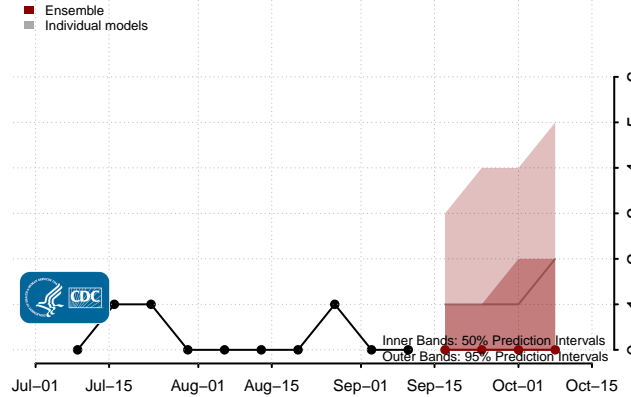
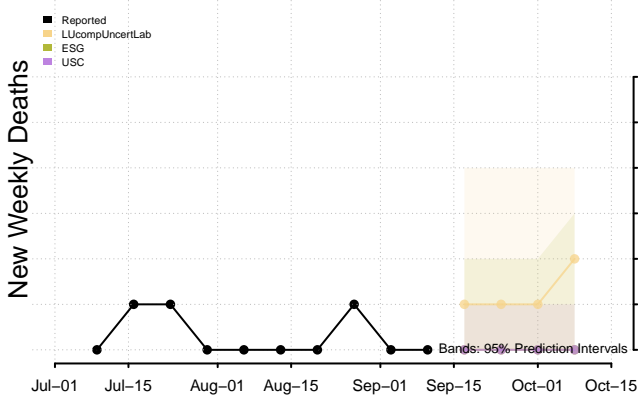
Alabama



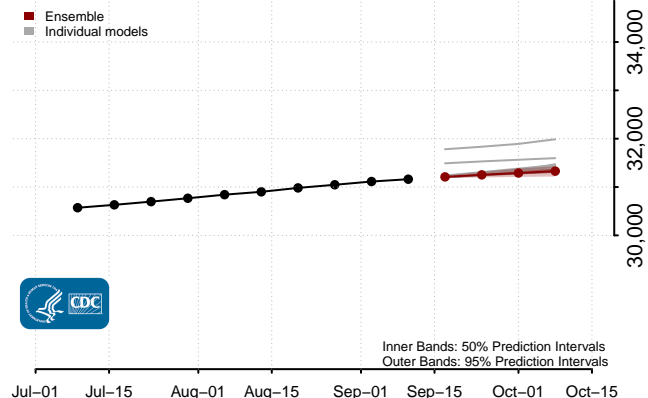
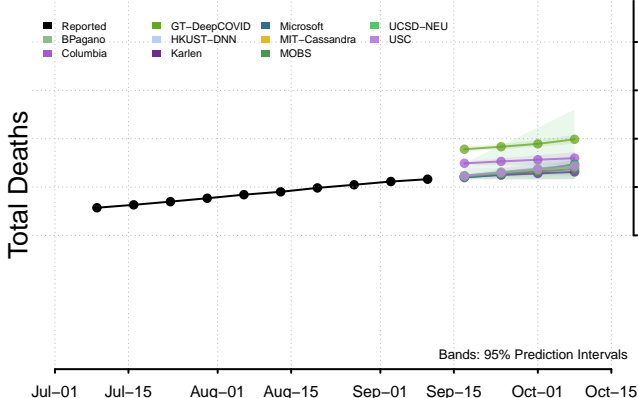
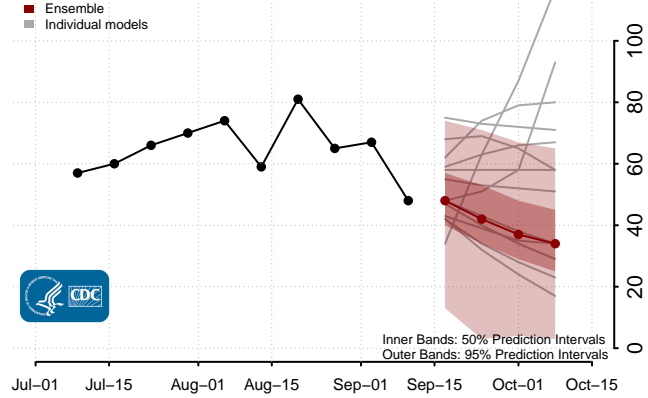
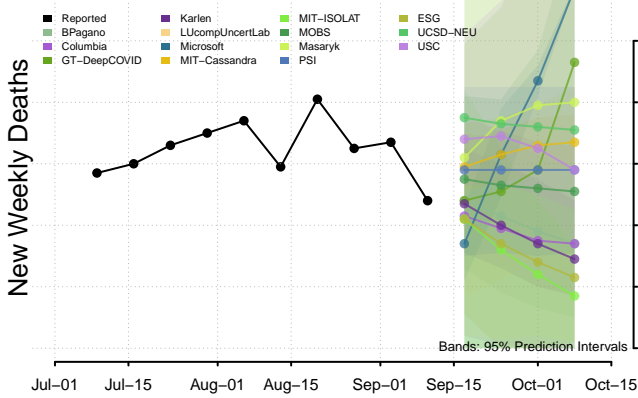
Alaska



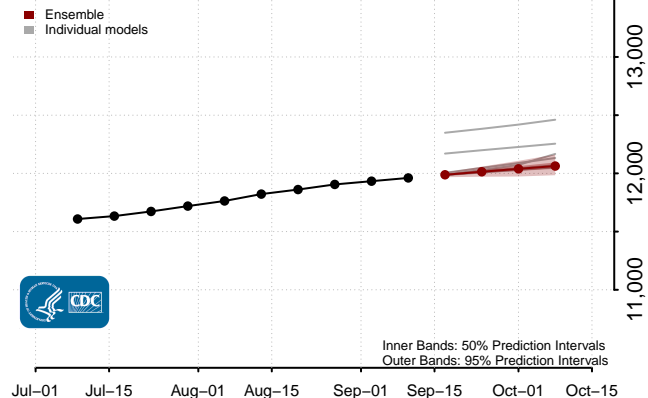
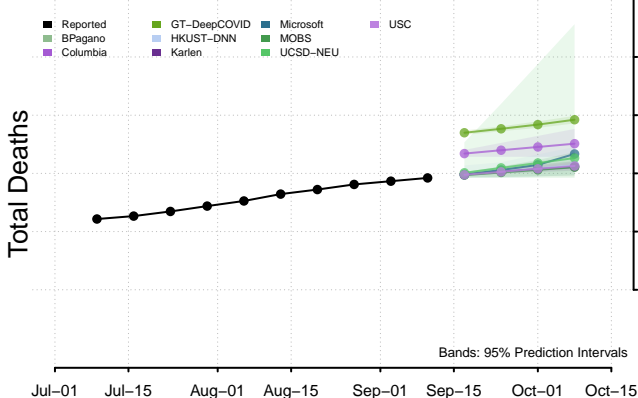
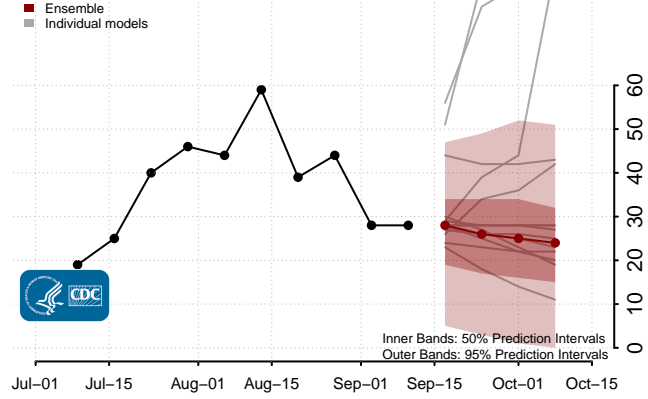
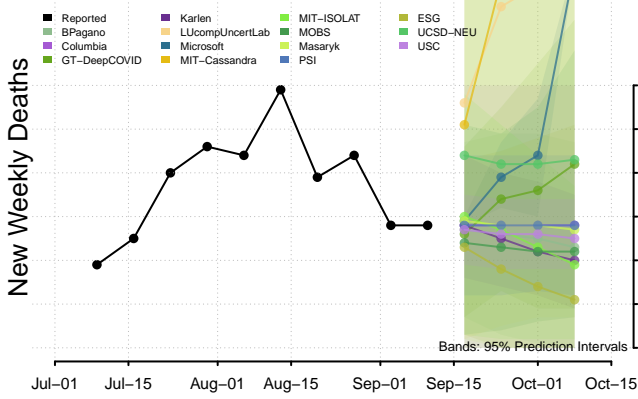
American Samoa



Arizona*

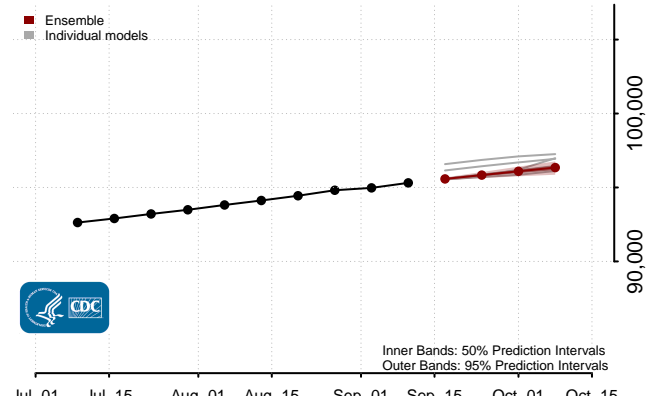
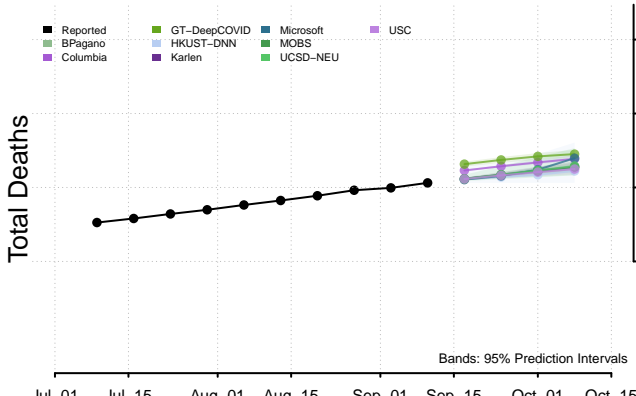
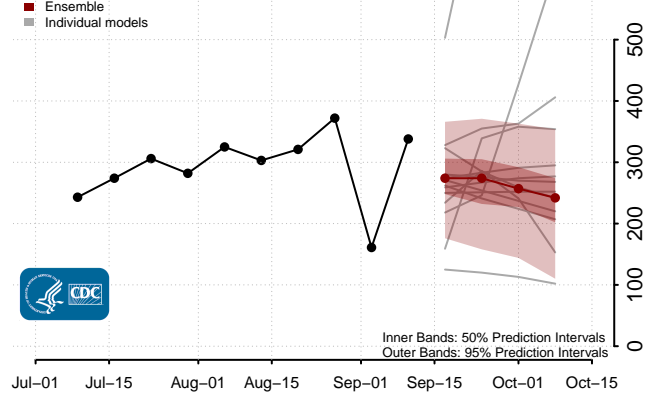
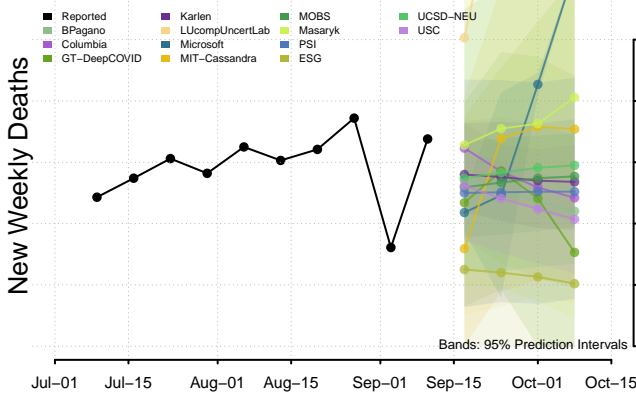


Arkansas

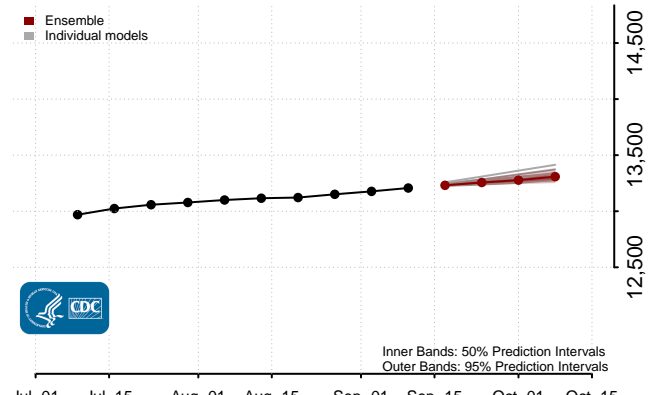
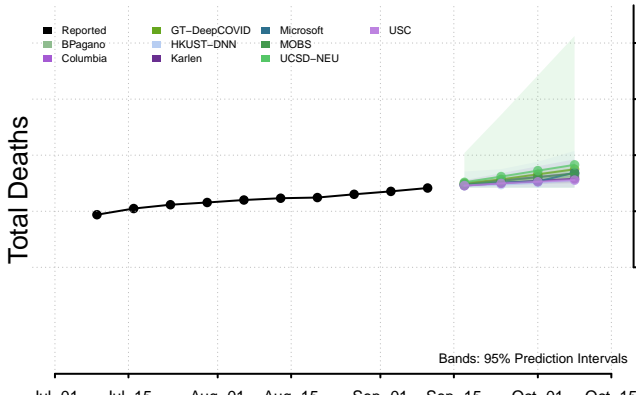
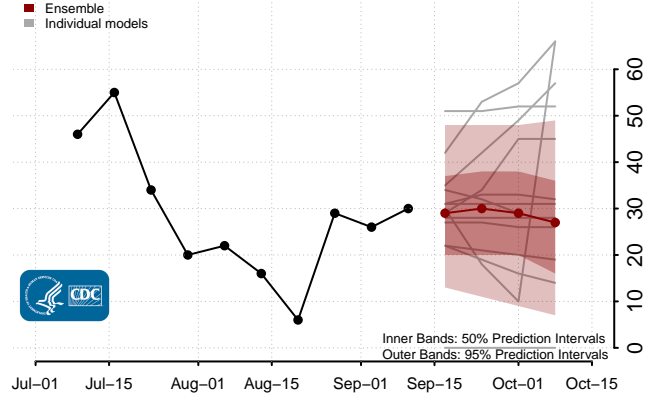
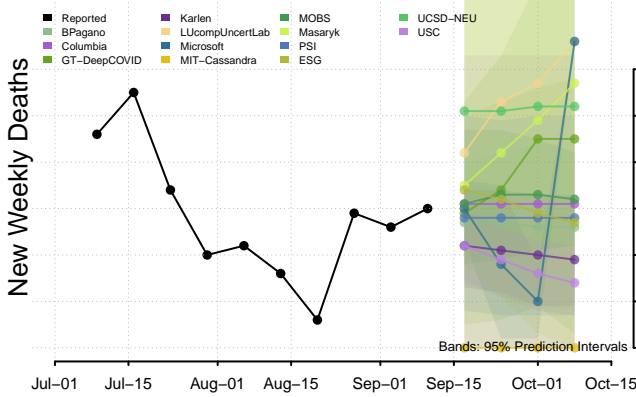


*New weekly deaths may decrease in this location over the next four weeks. For these locations, the ensemble forecast indicates a probability of 0.75 or greater that fewer deaths will be reported in week four of the forecast than in the last reported week.

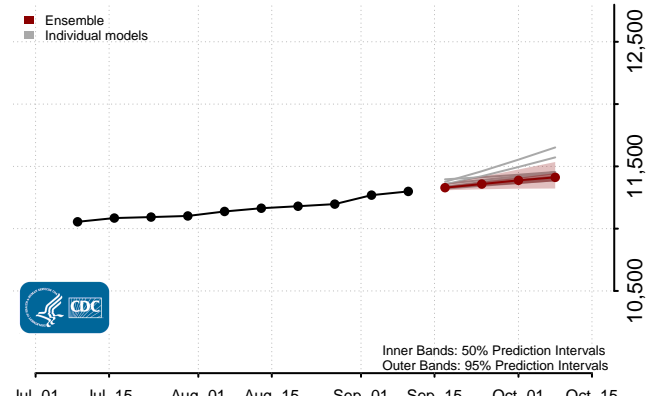
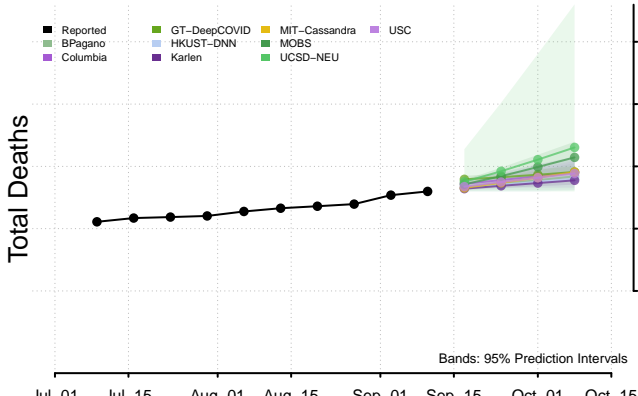
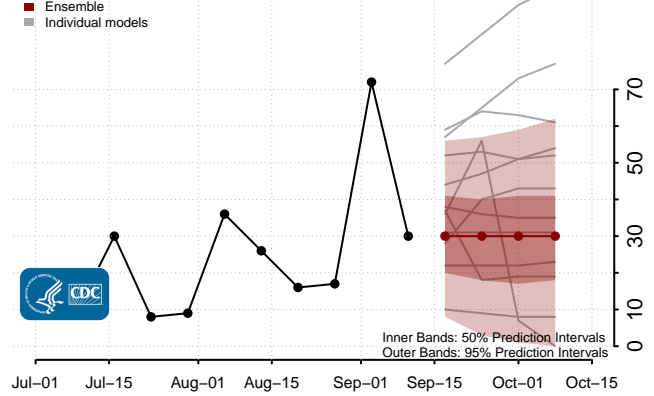
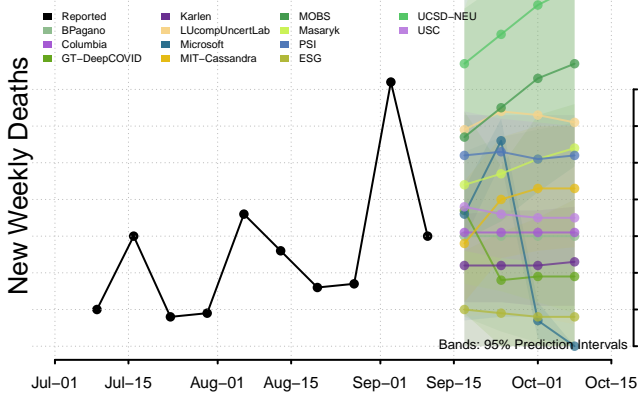
California



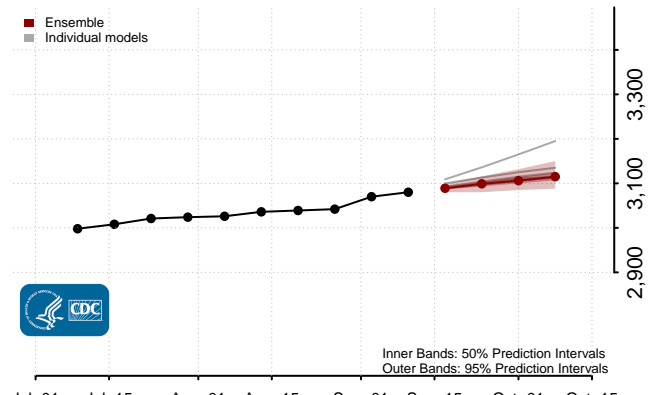
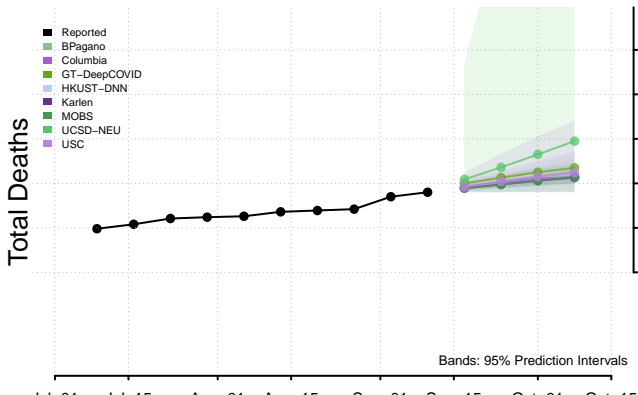
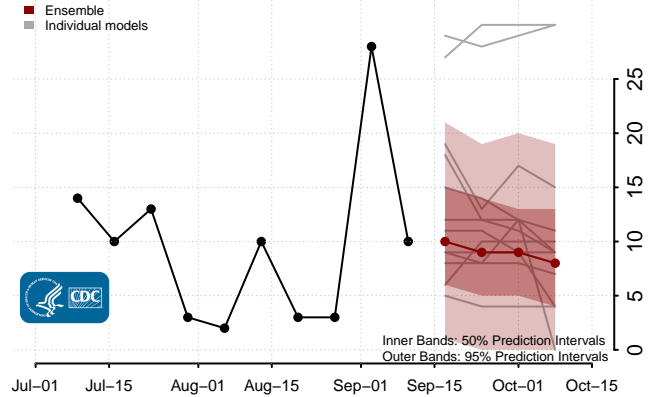
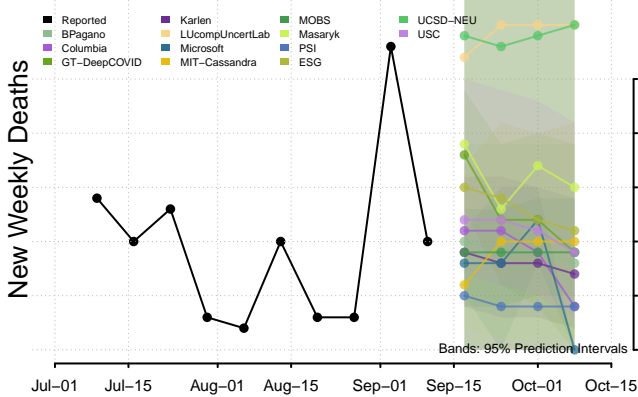
Colorado



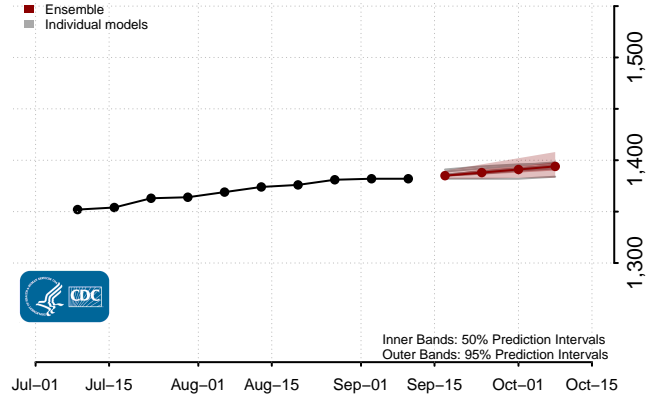
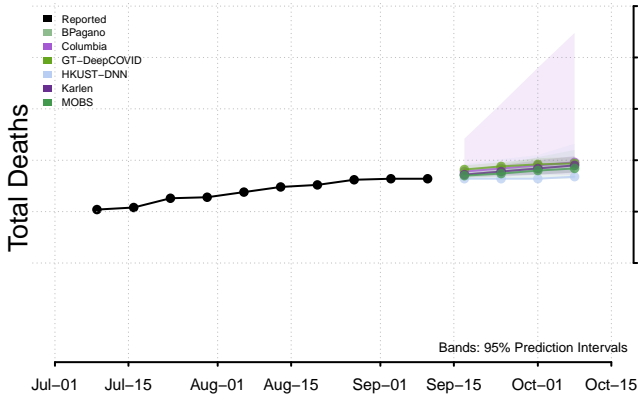
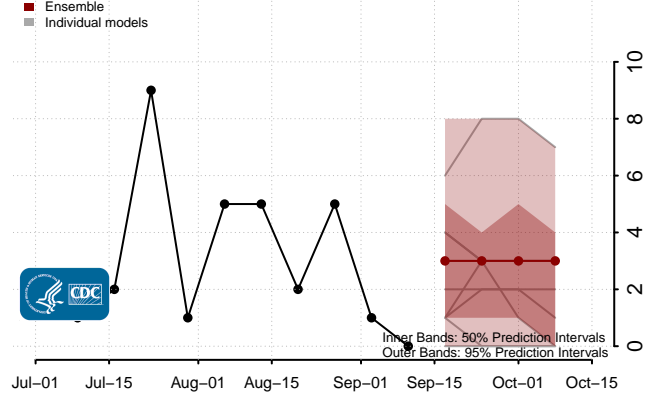
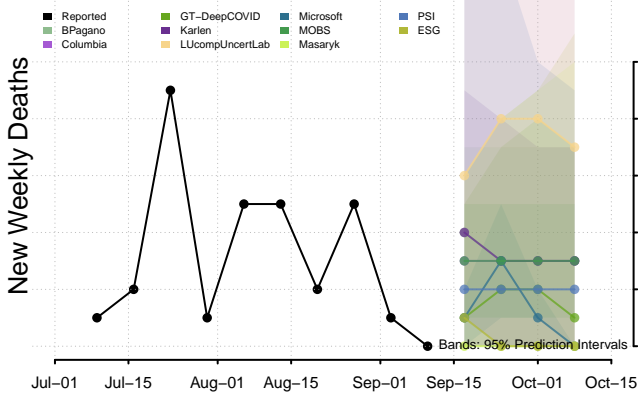
Connecticut



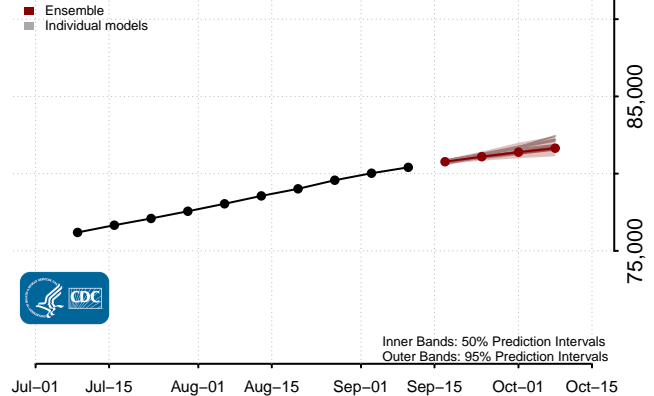
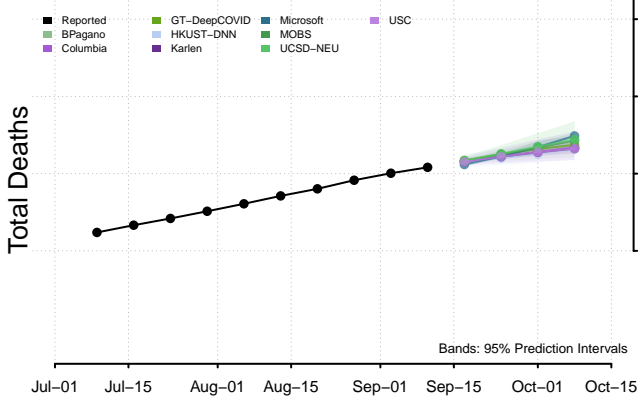
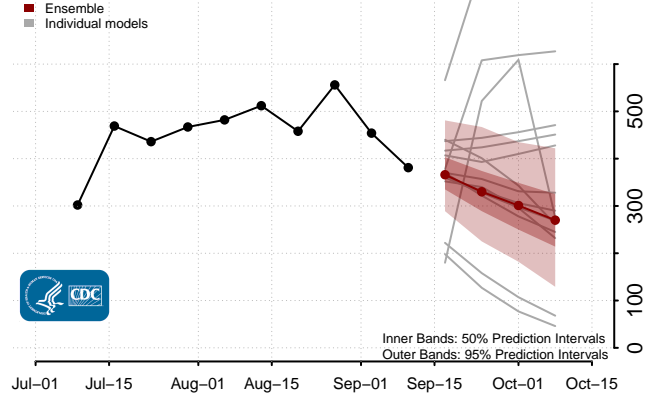
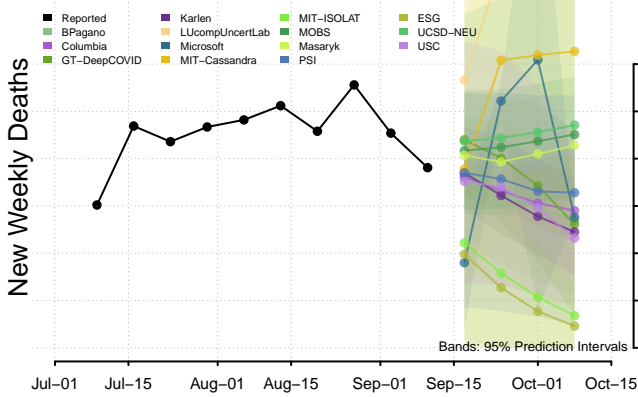
Delaware



District of Columbia

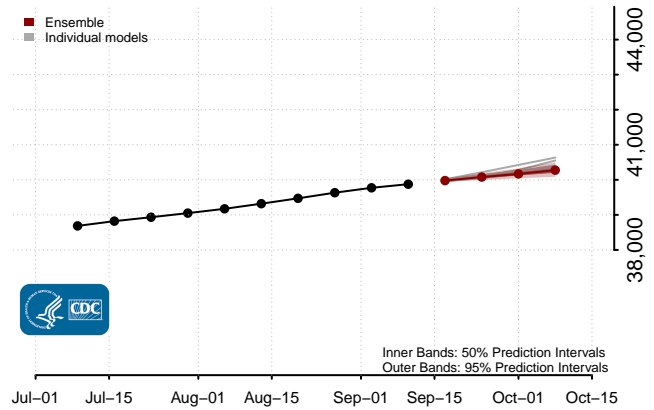
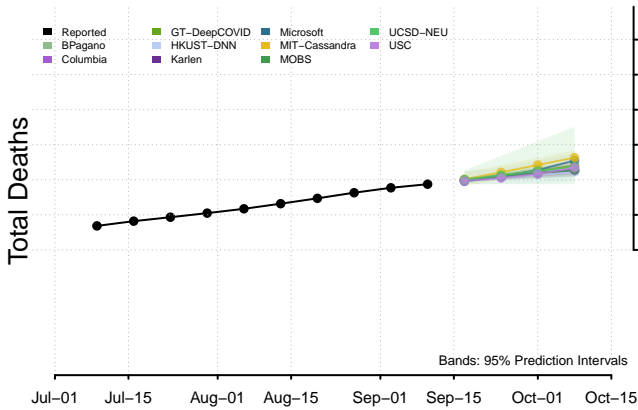
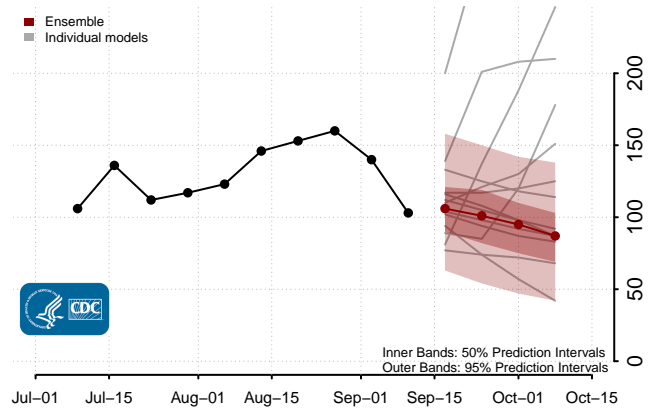
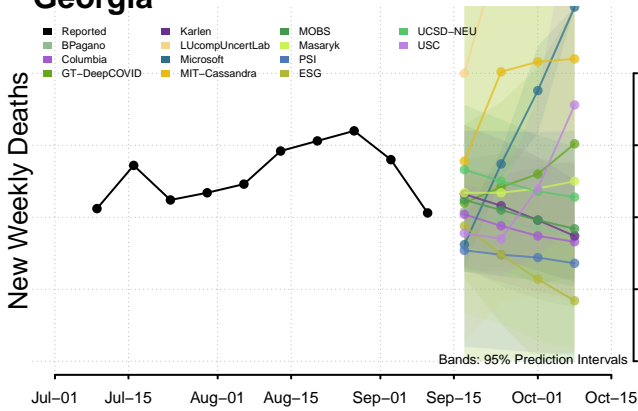


Florida*

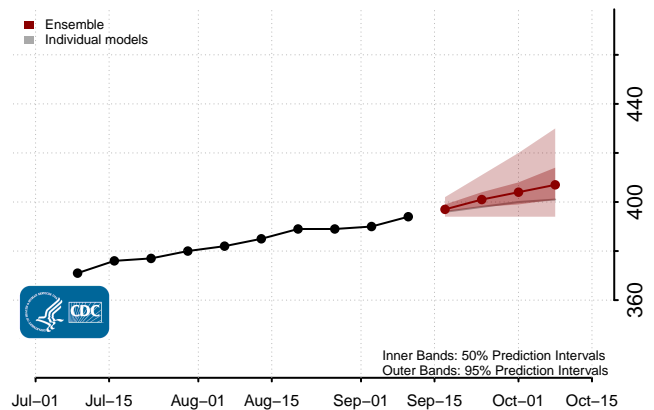
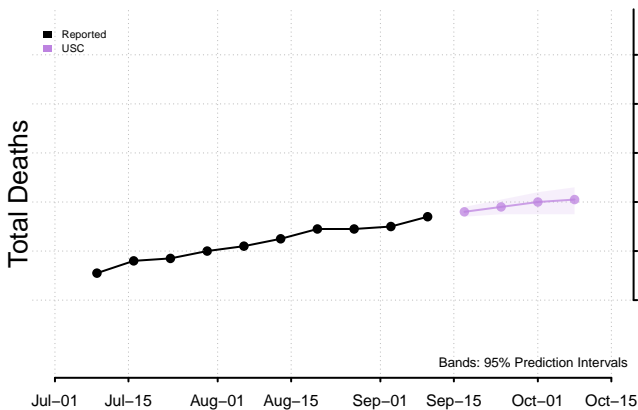
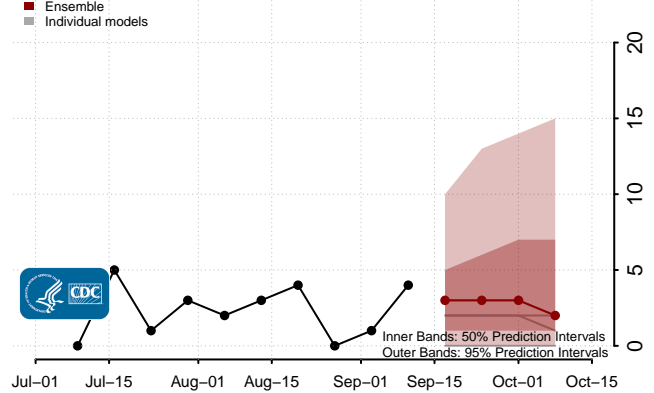
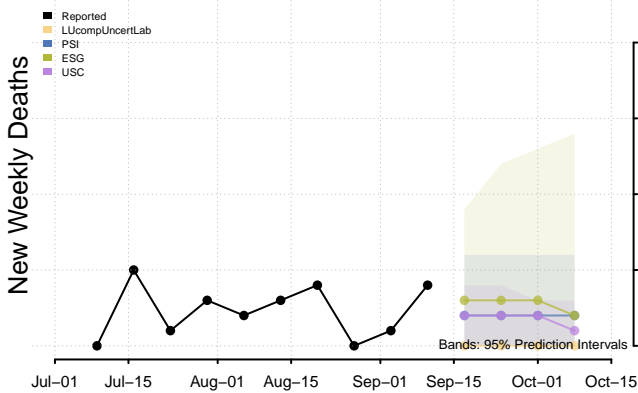


*New weekly deaths may decrease in this location over the next four weeks. For these locations, the ensemble forecast indicates a probability of 0.75 or greater that fewer deaths will be reported in week four of the forecast than in the last reported week.

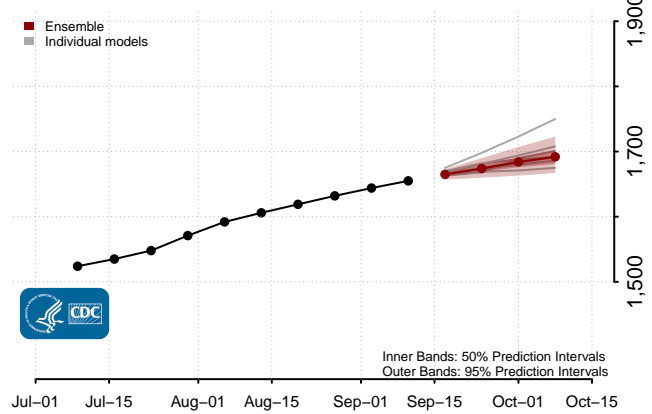
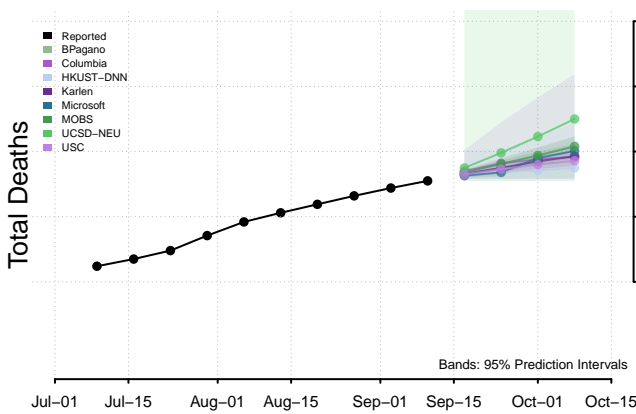
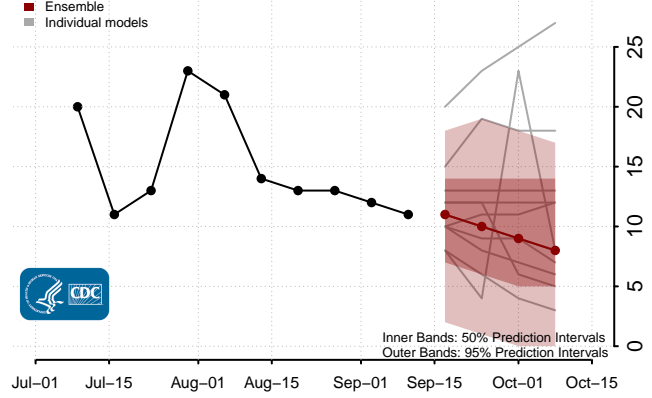
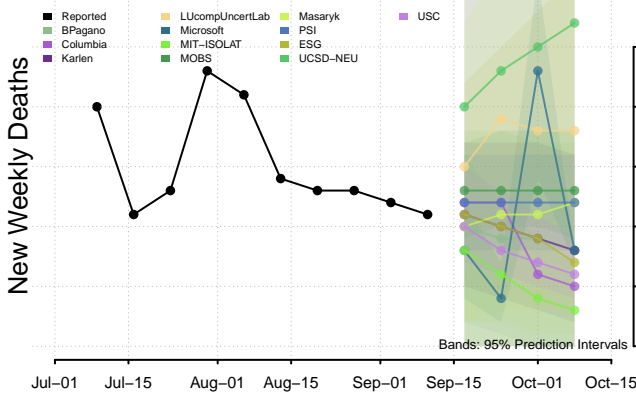
Georgia



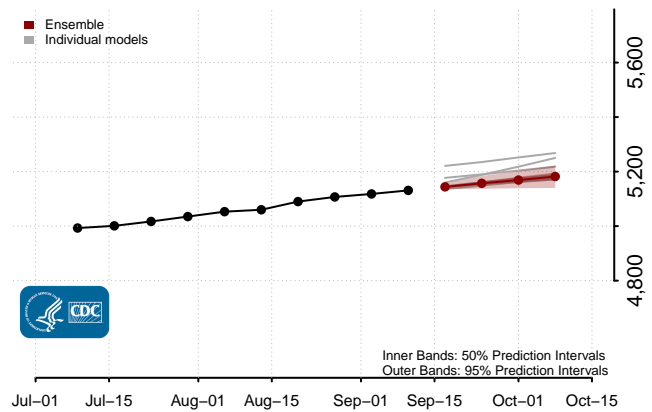
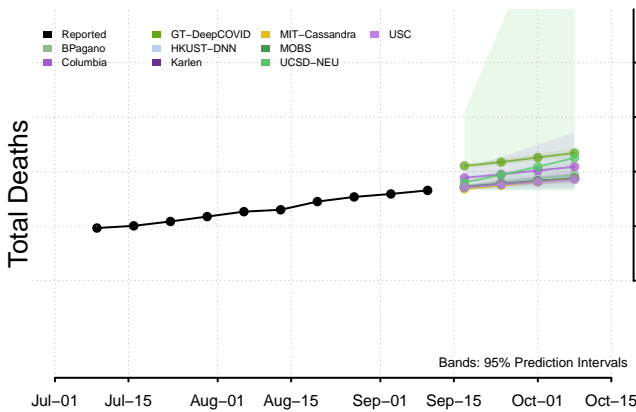
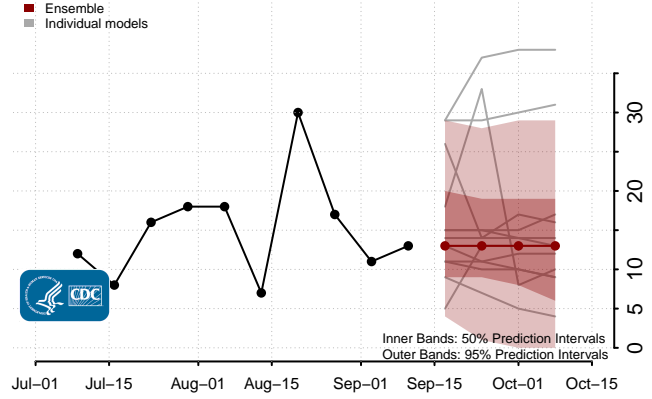
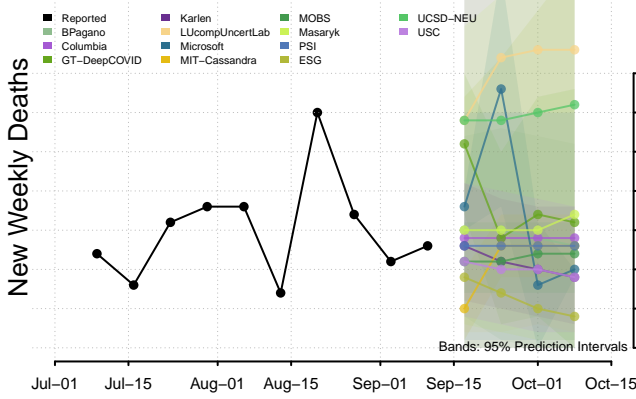
Guam



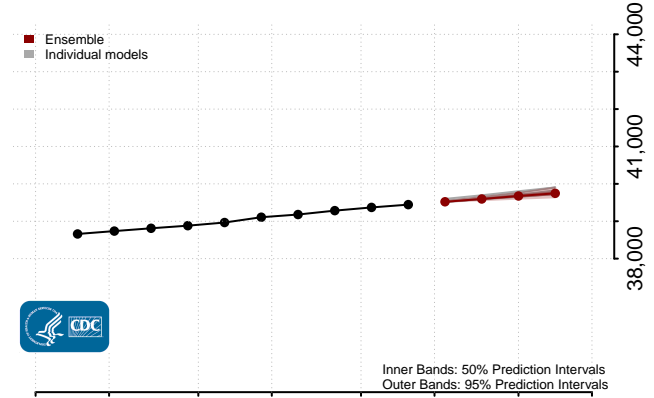
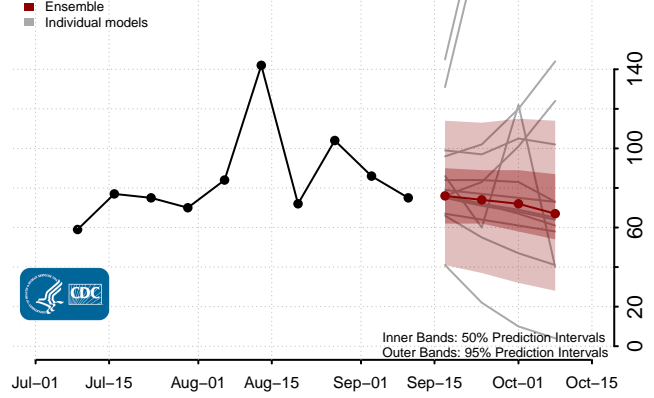
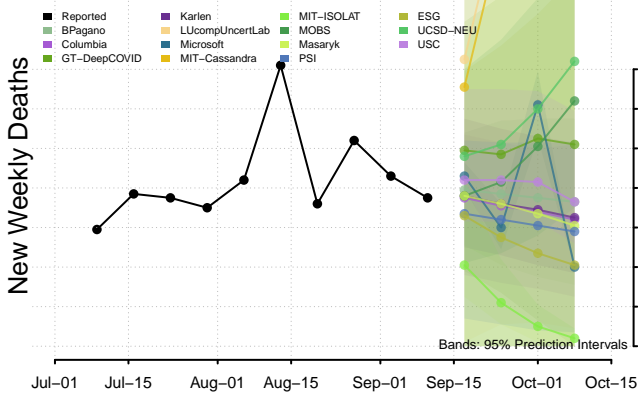
Hawaii



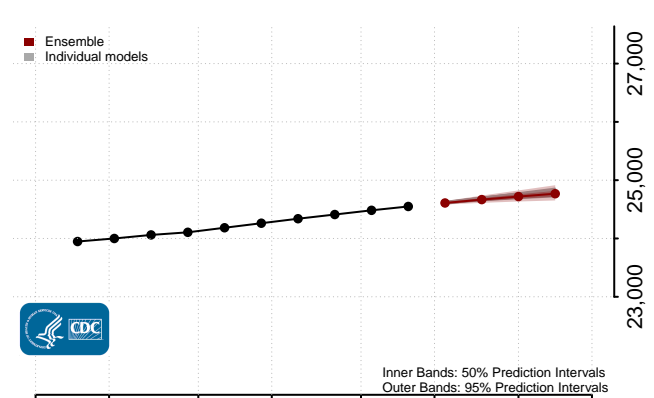
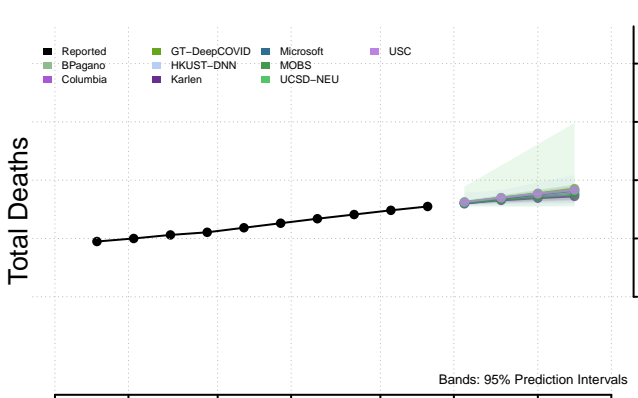
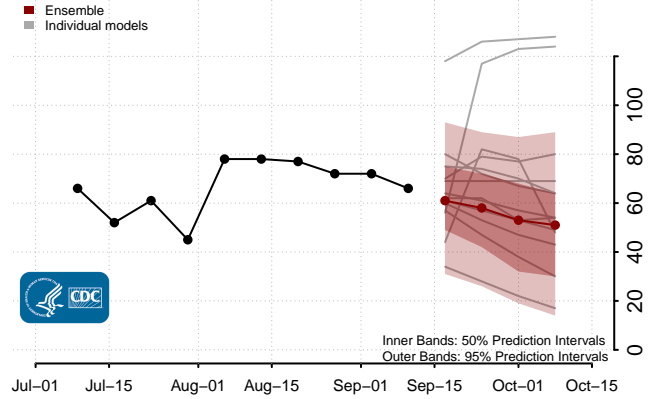
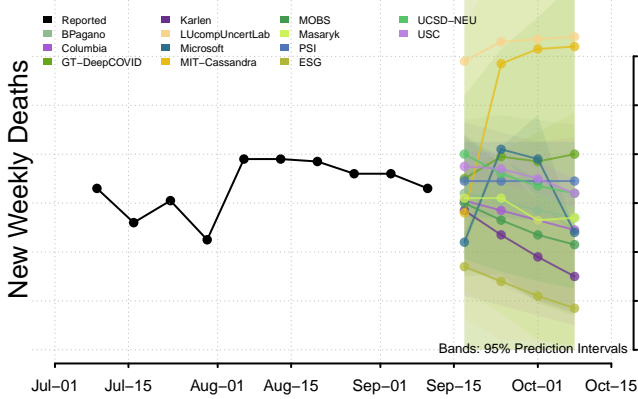
Idaho



Illinois

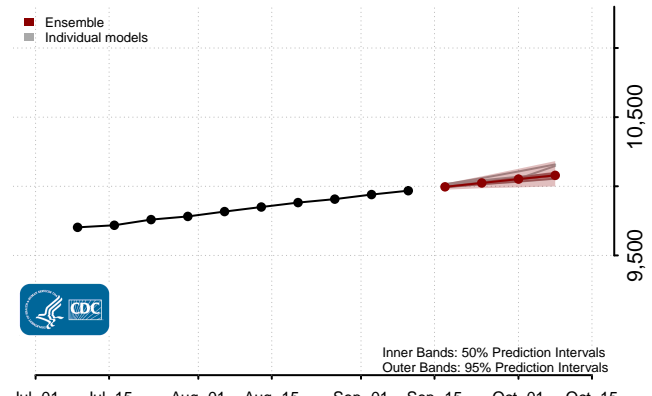
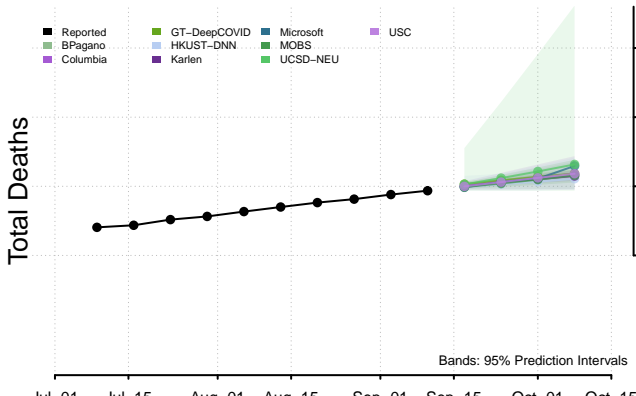
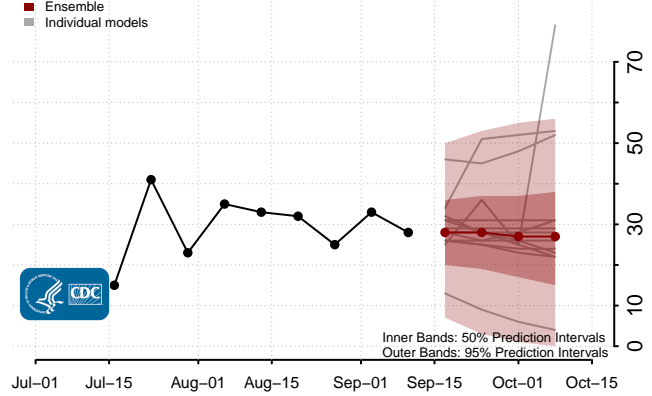
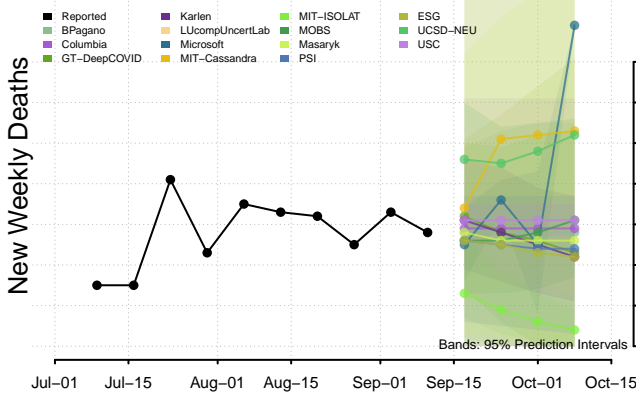


Indiana*

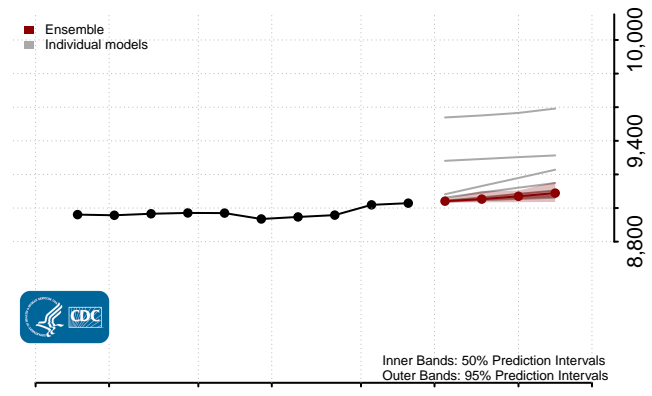
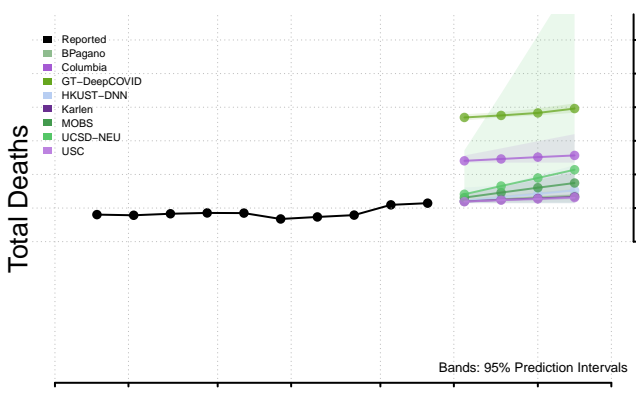
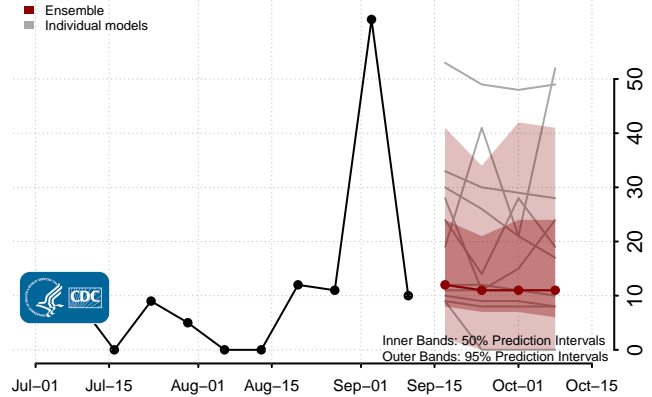
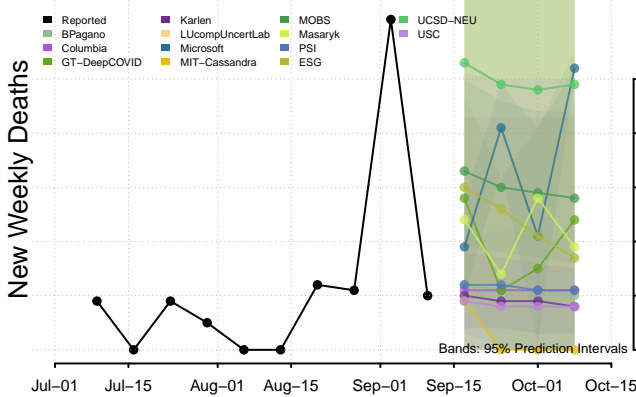


*New weekly deaths may decrease in this location over the next four weeks. For these locations, the ensemble forecast indicates a probability of 0.75 or greater that fewer deaths will be reported in week four of the forecast than in the last reported week.

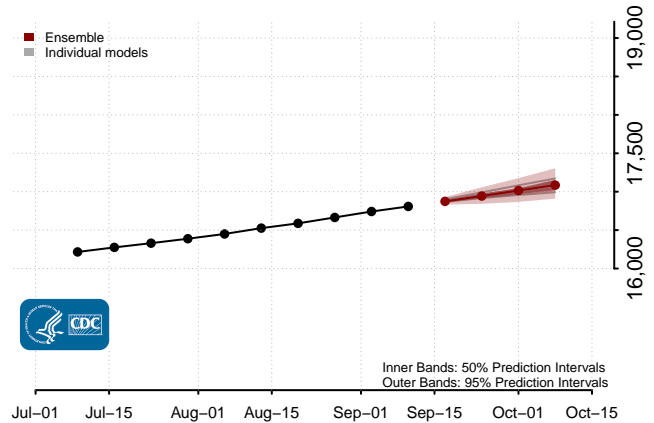
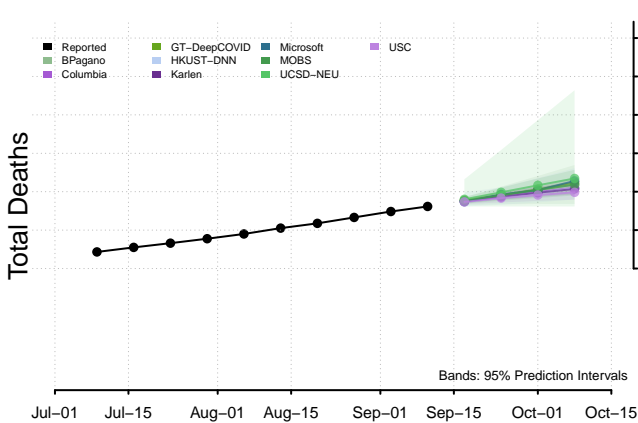
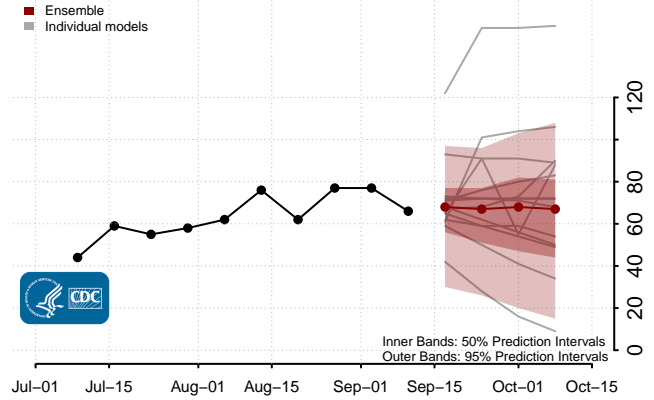
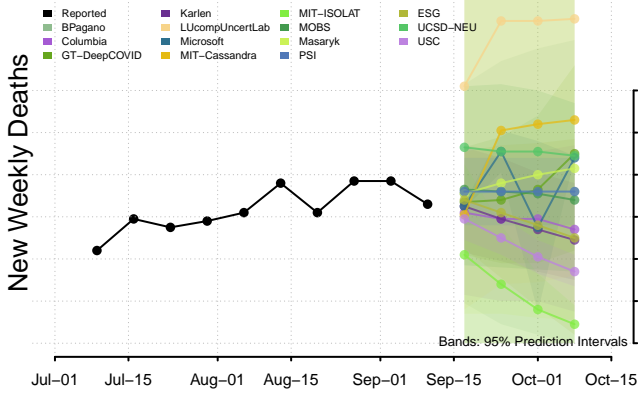
Iowa



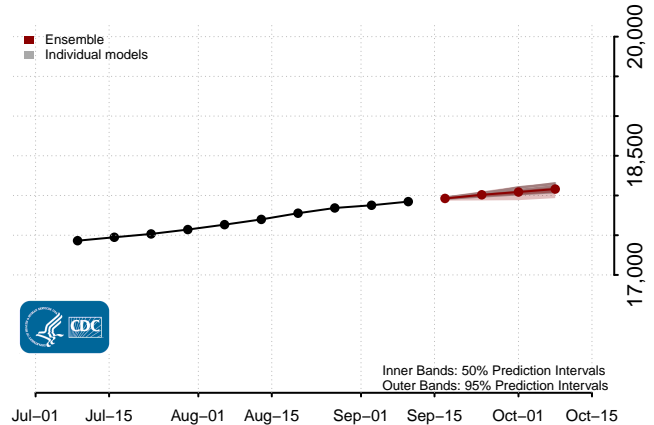
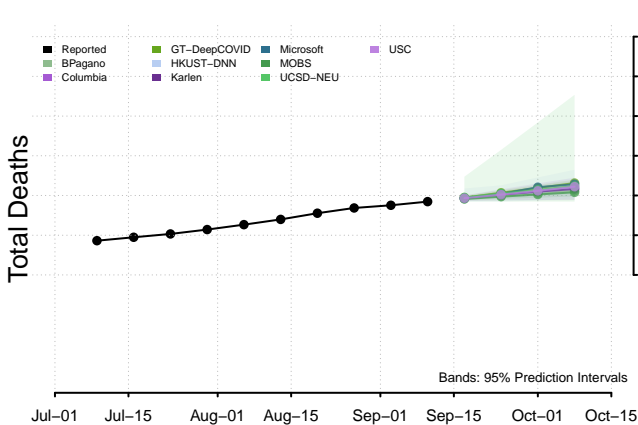
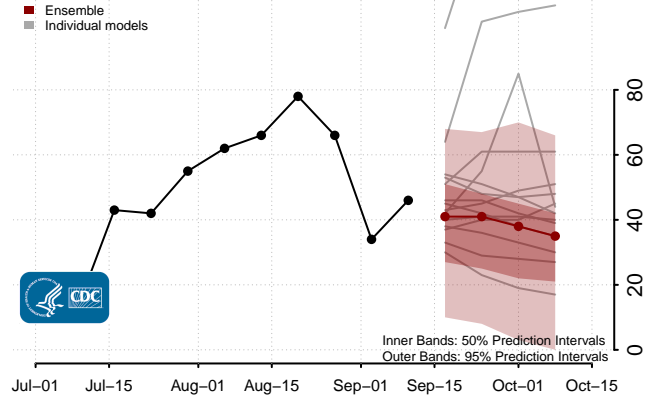
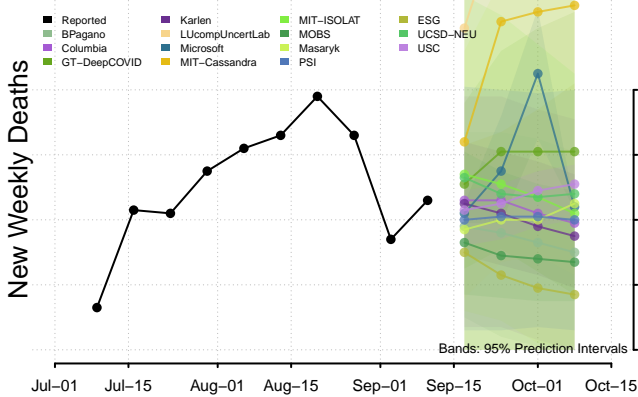
Kansas

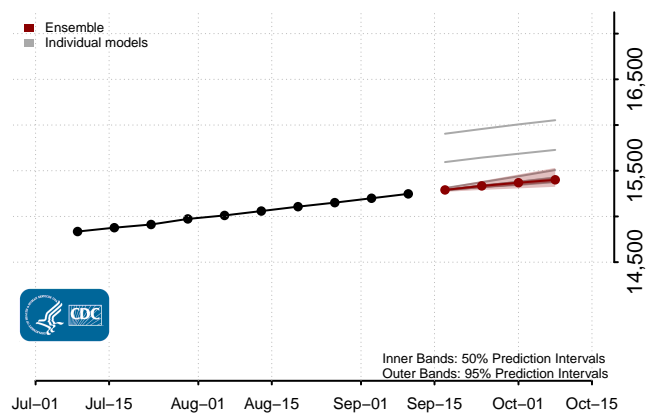
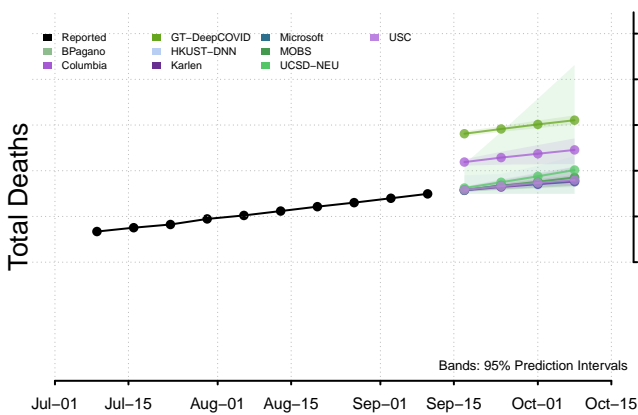
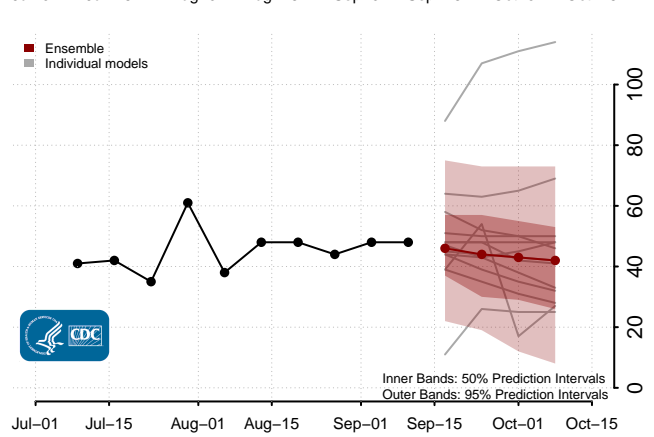
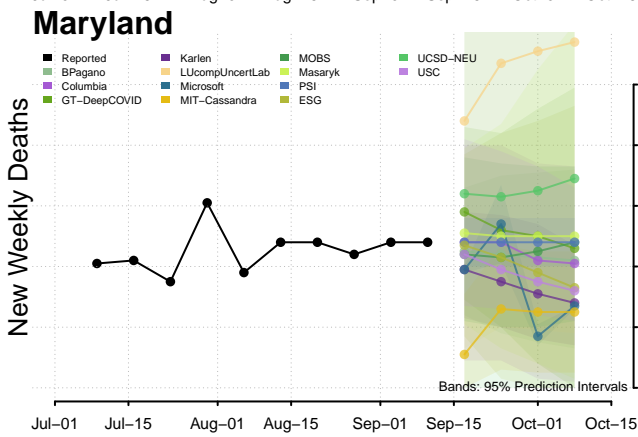
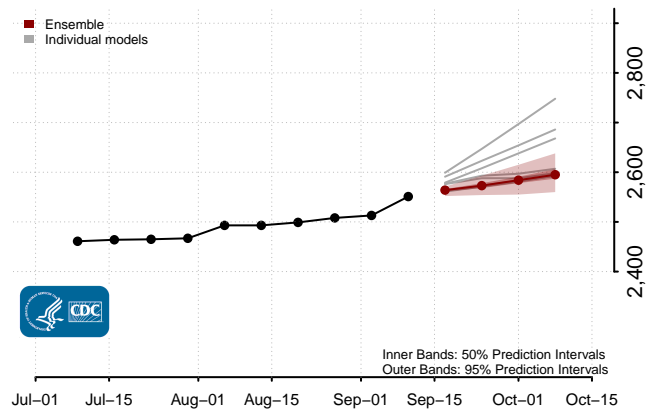
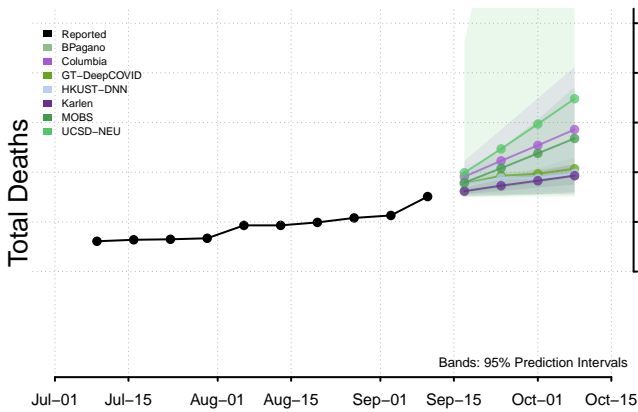
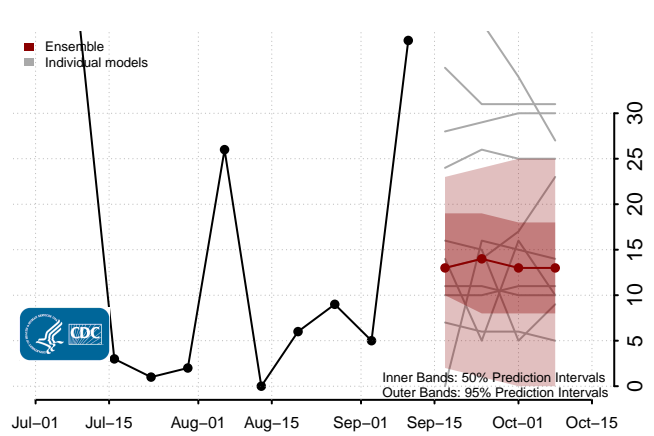
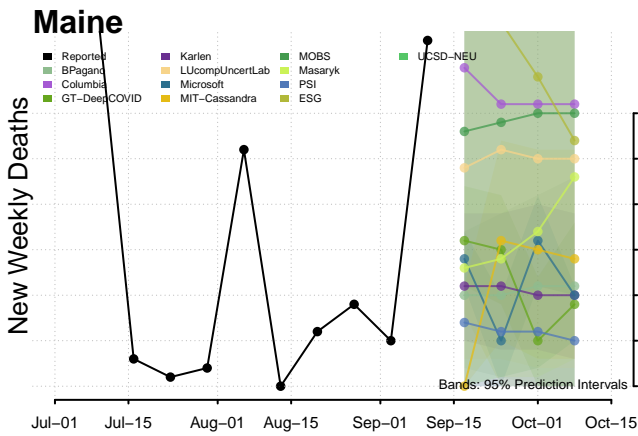


Kentucky

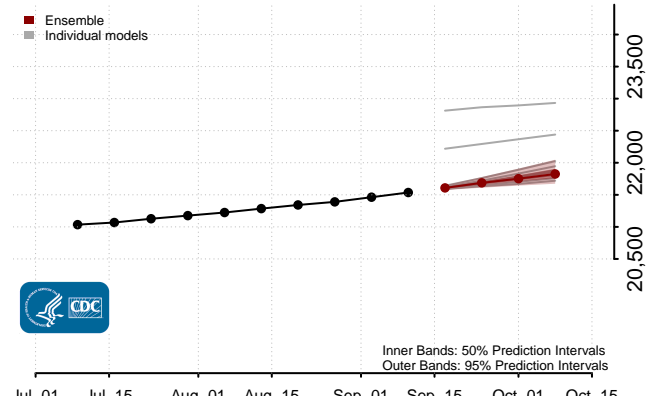
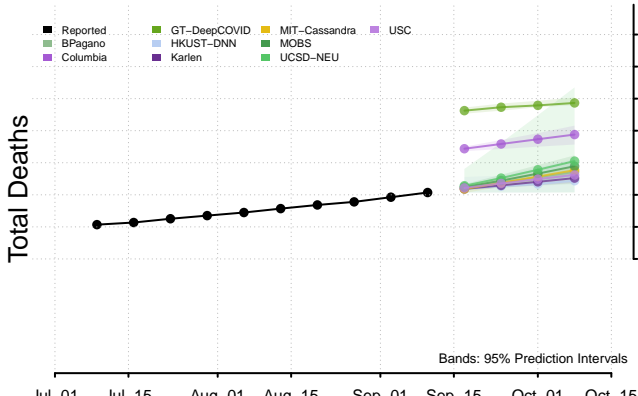
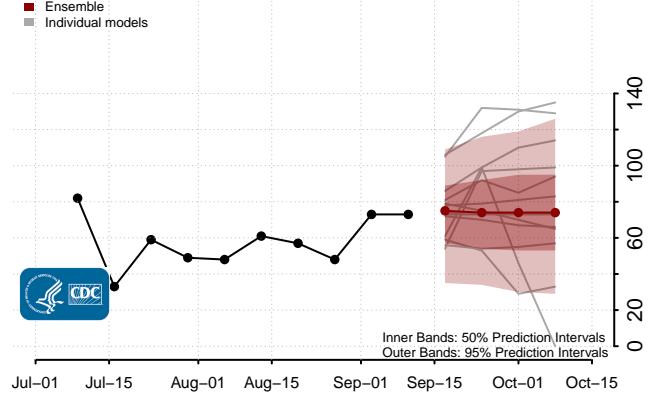
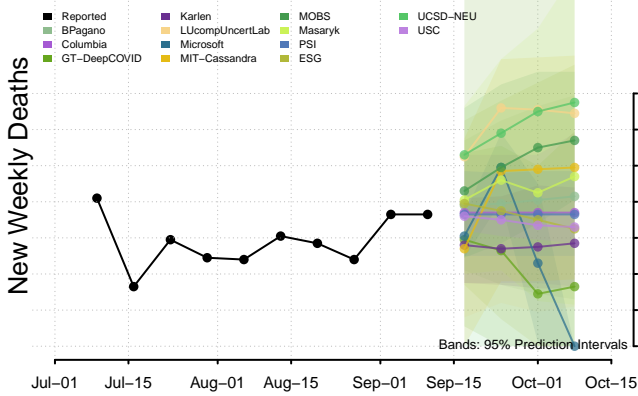


Louisiana

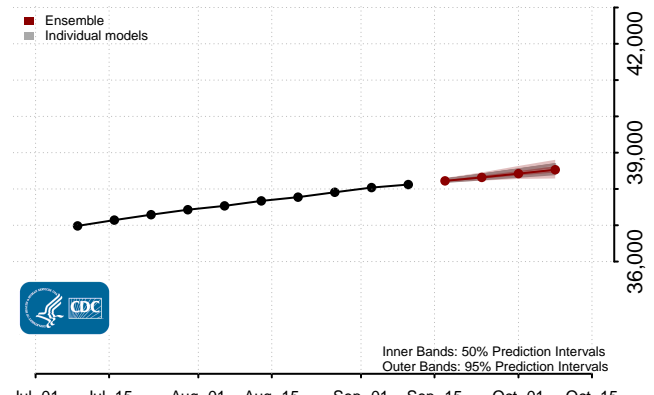
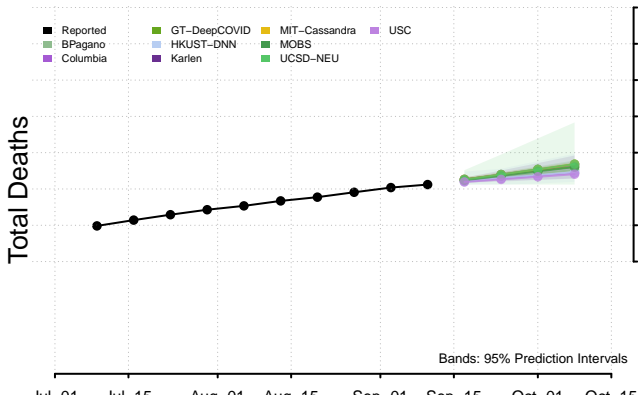
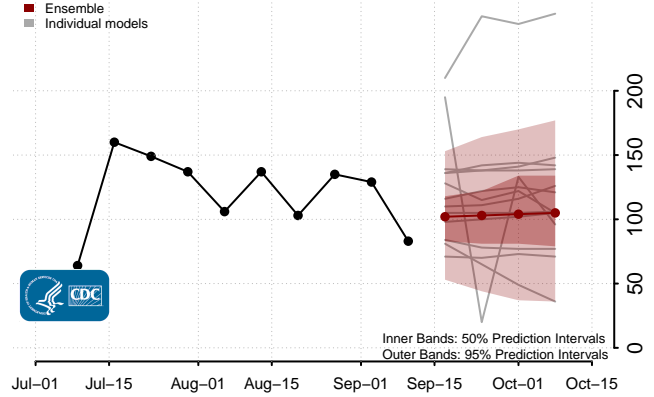
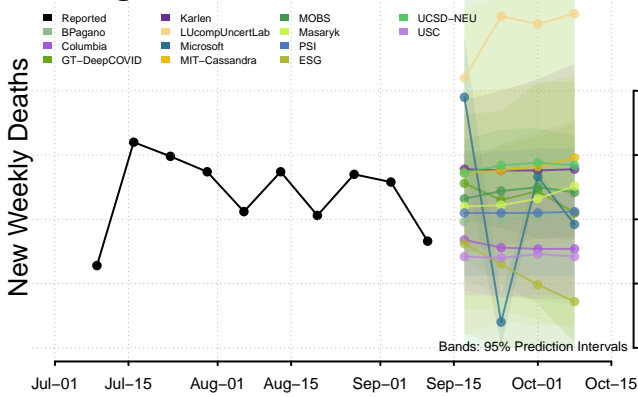




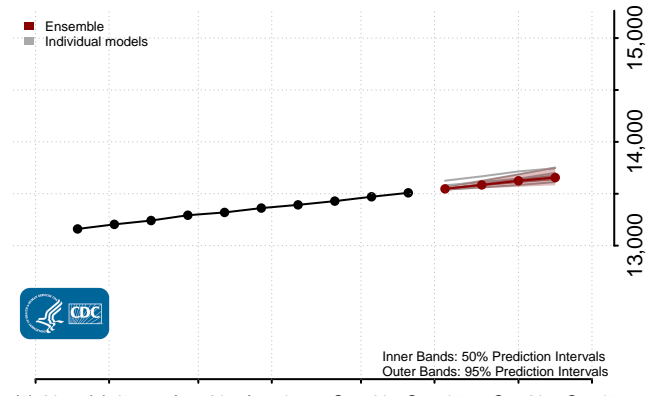
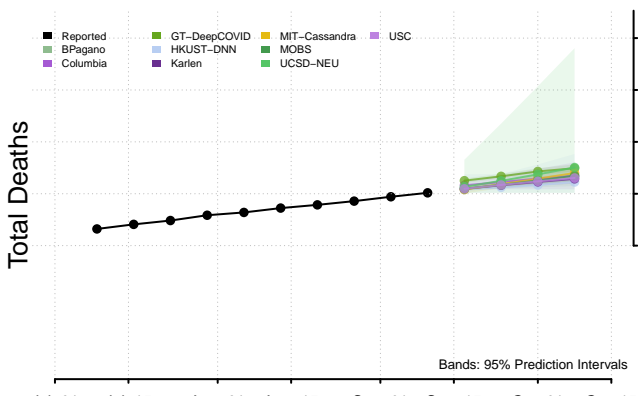
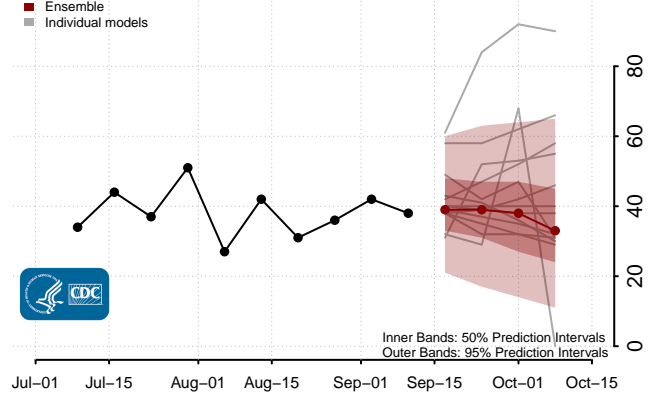
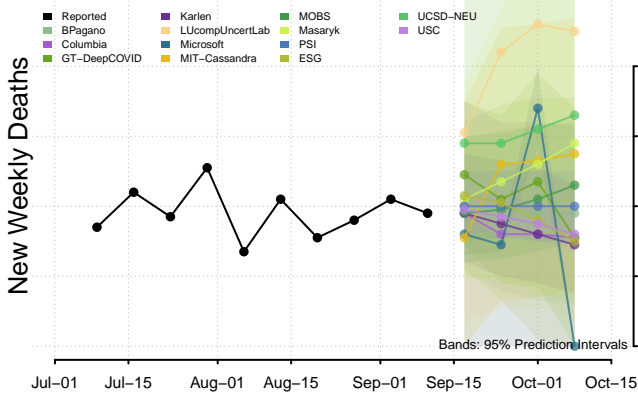
Massachusetts



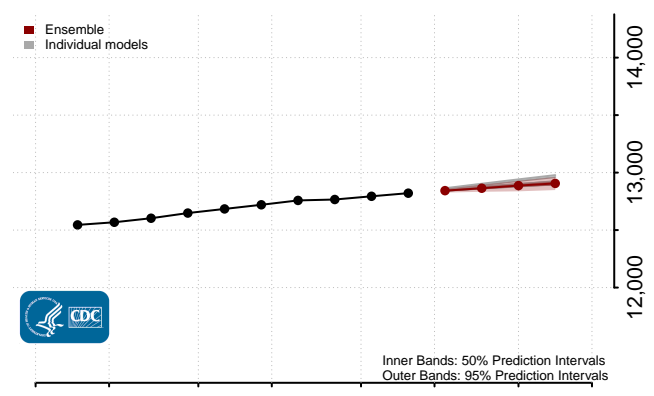
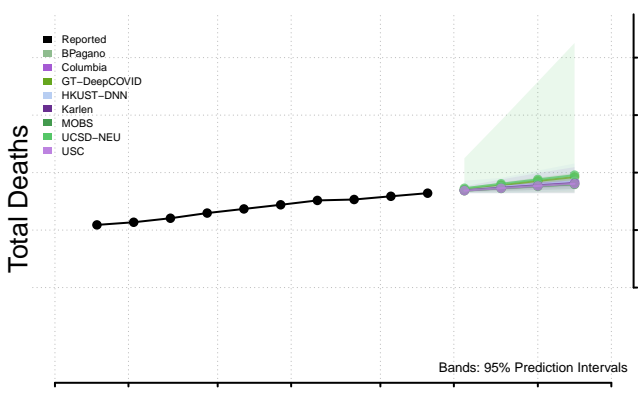
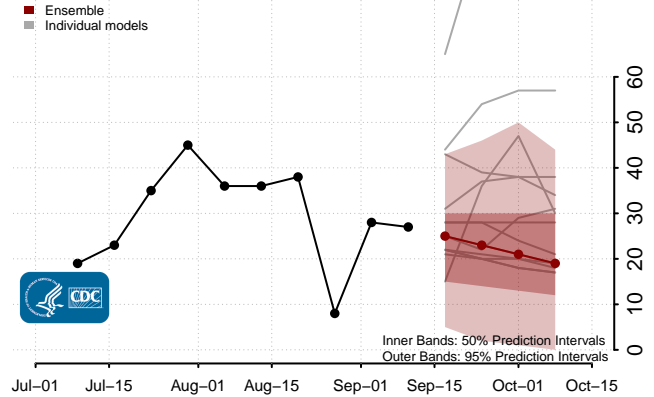
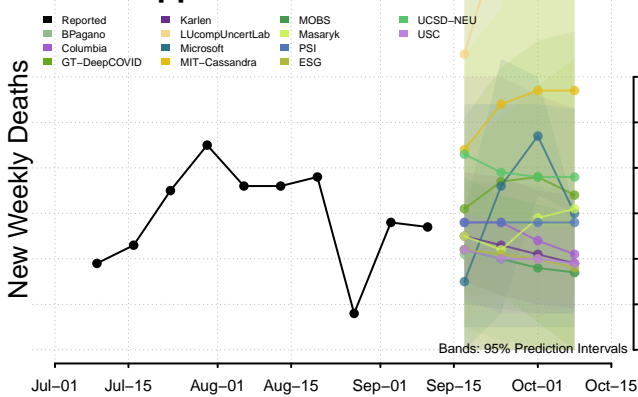
Michigan



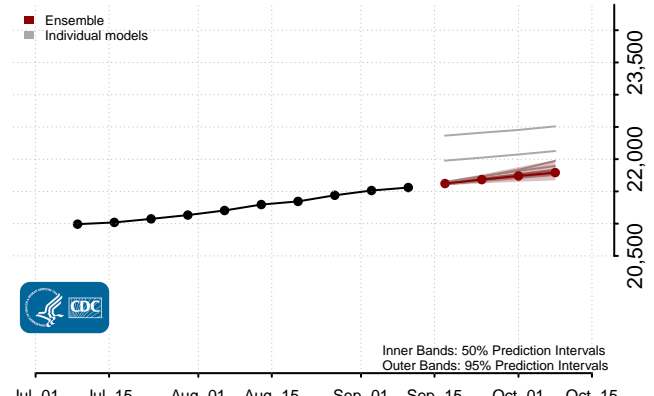
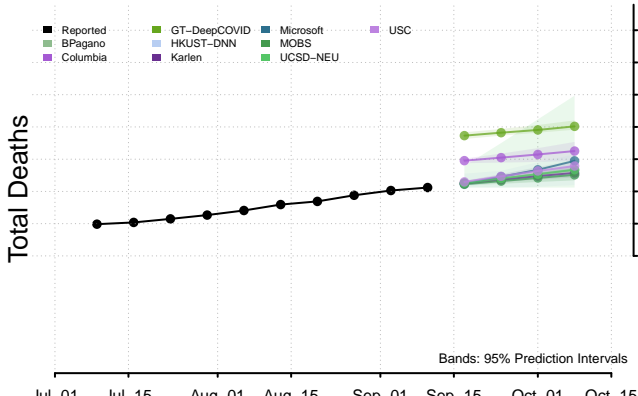
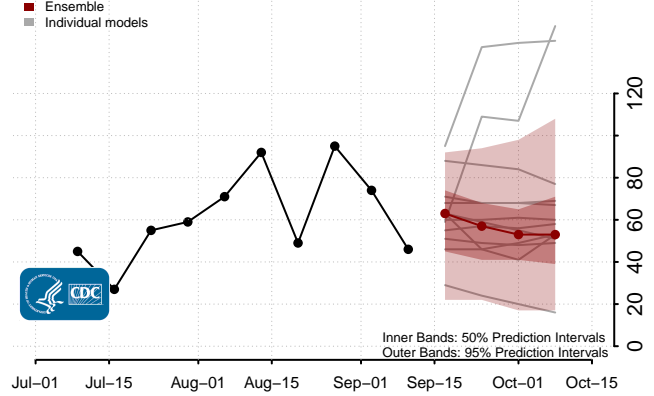
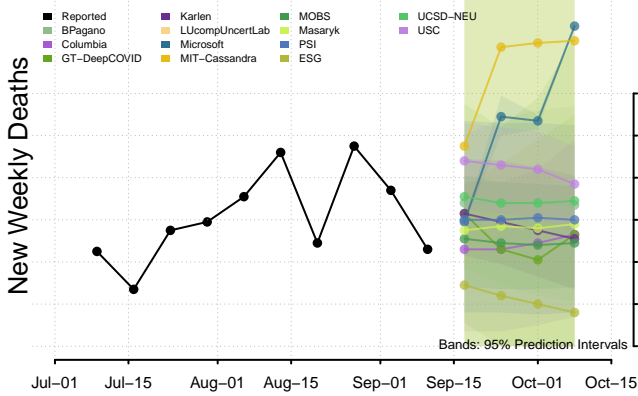
Minnesota



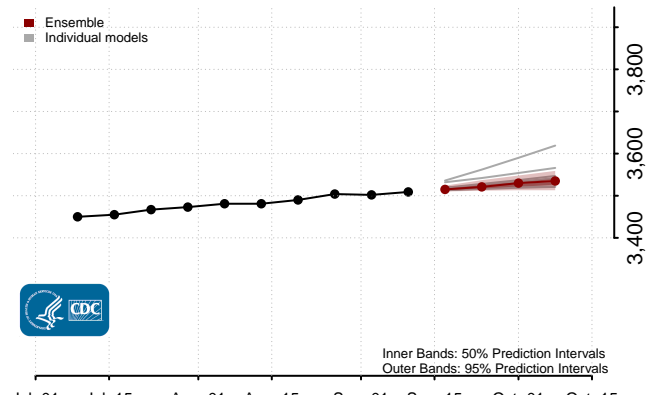
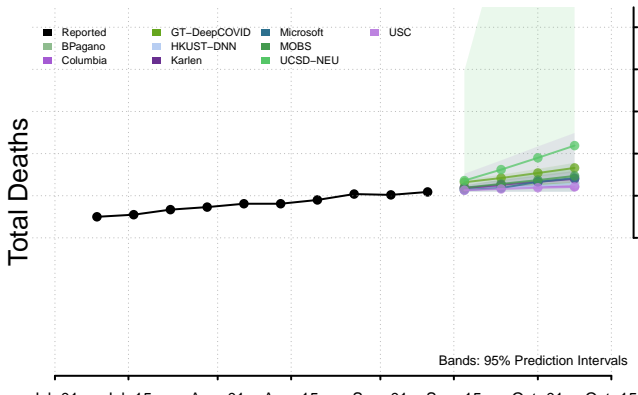
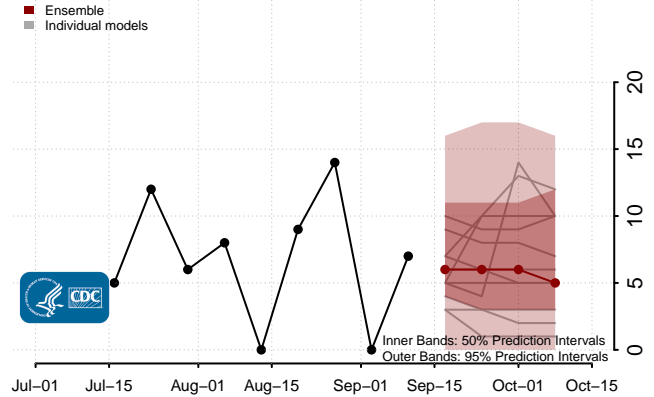
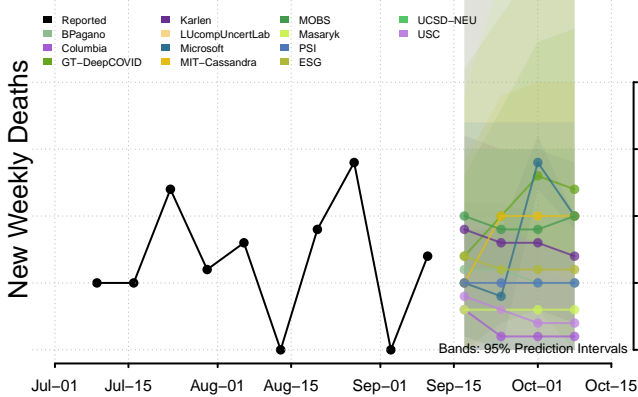
Mississippi



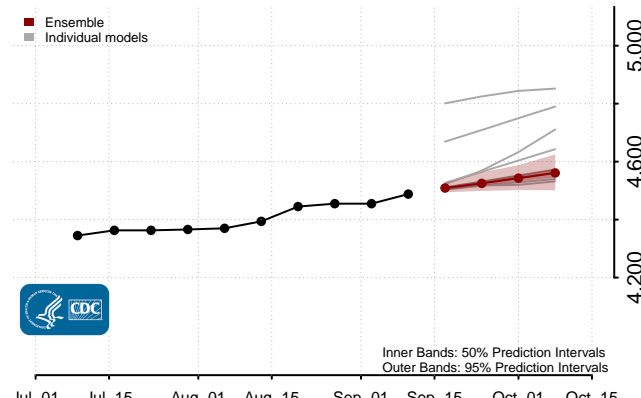
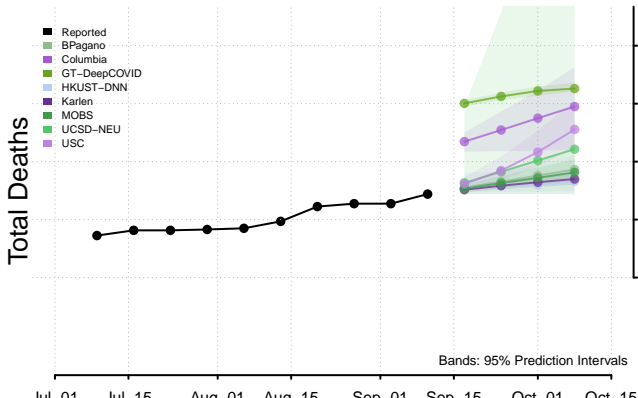
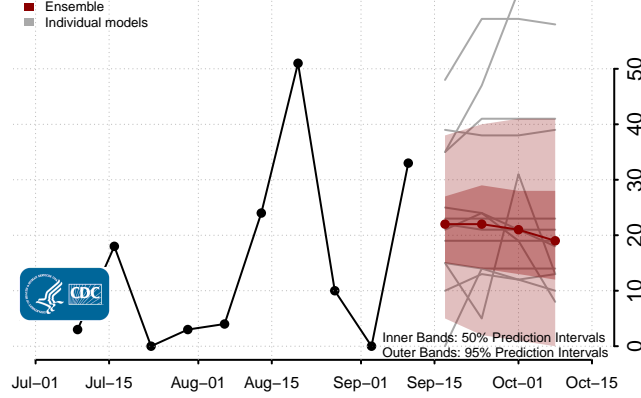
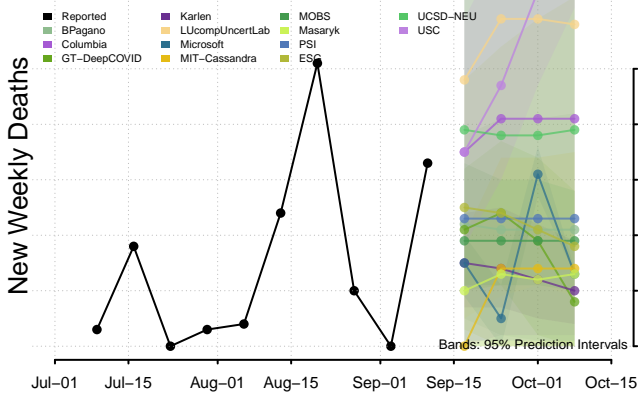
Missouri



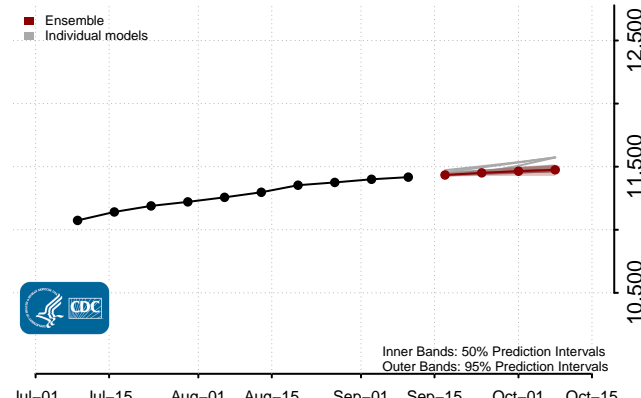
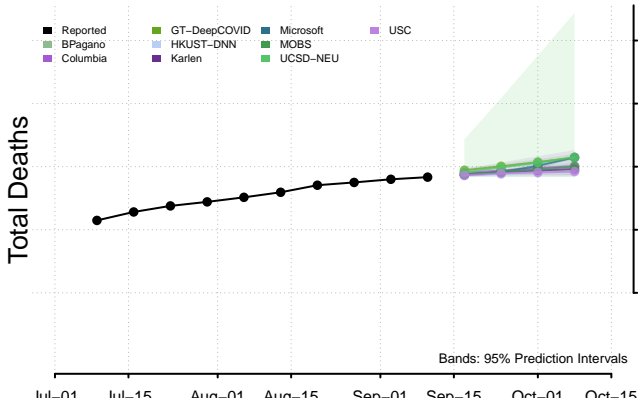
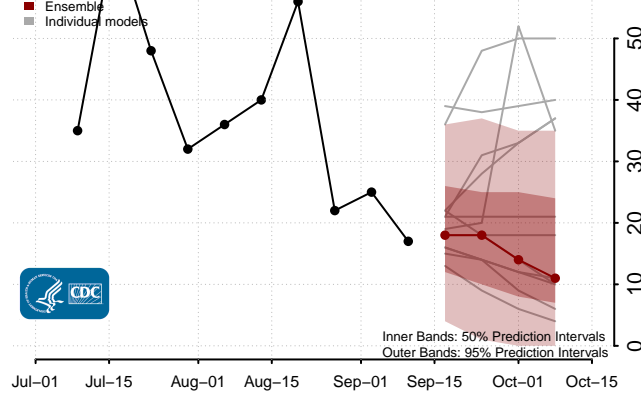
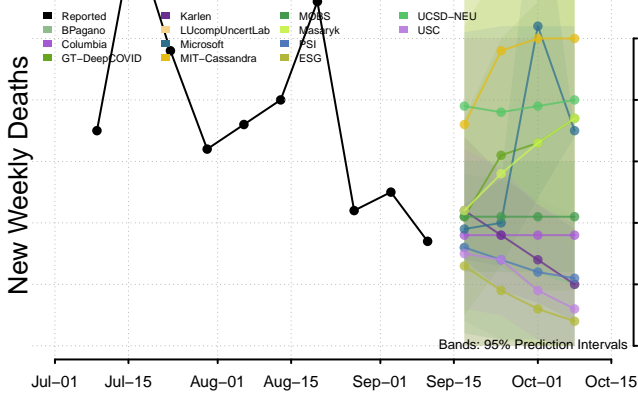
Montana



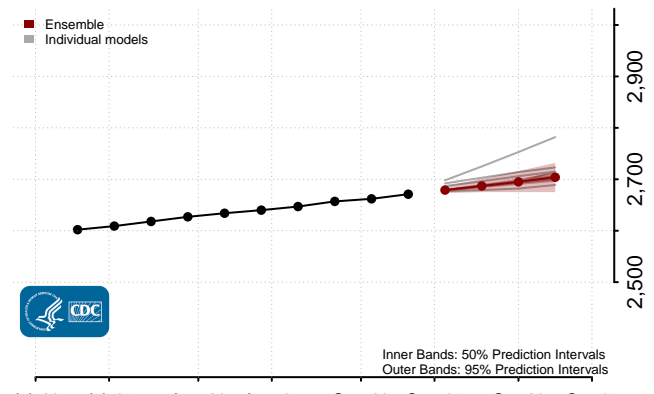
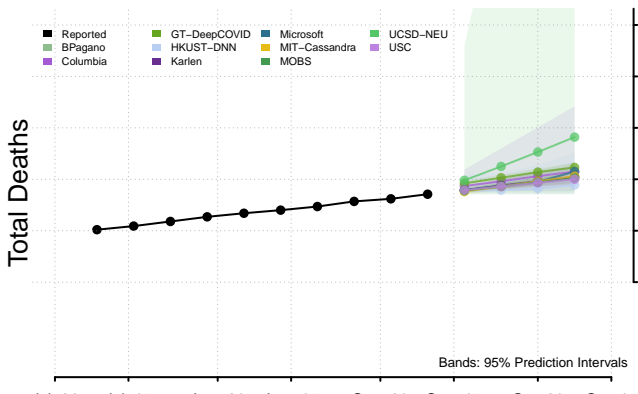
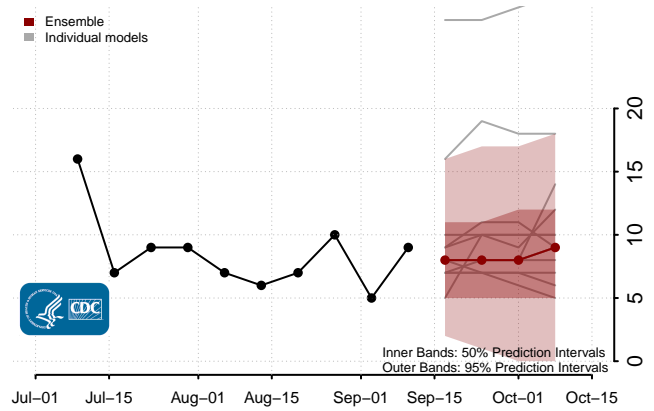
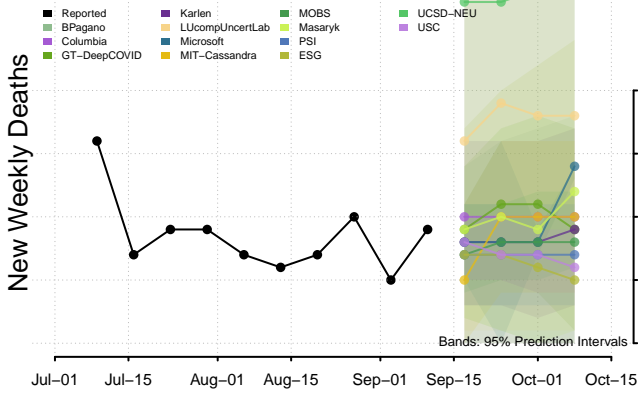
Nebraska



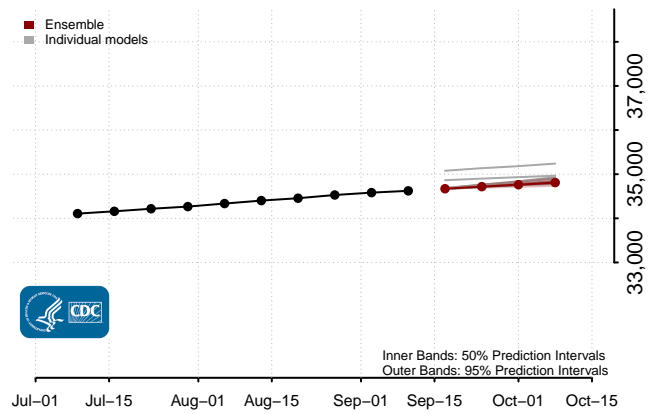
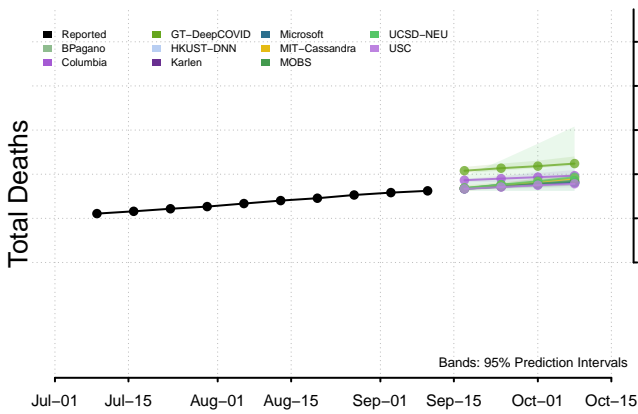
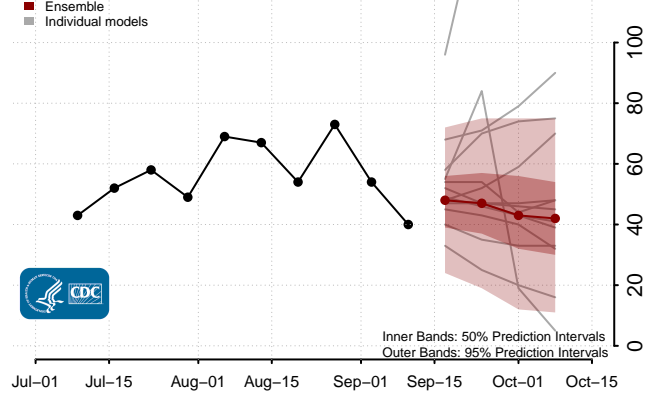
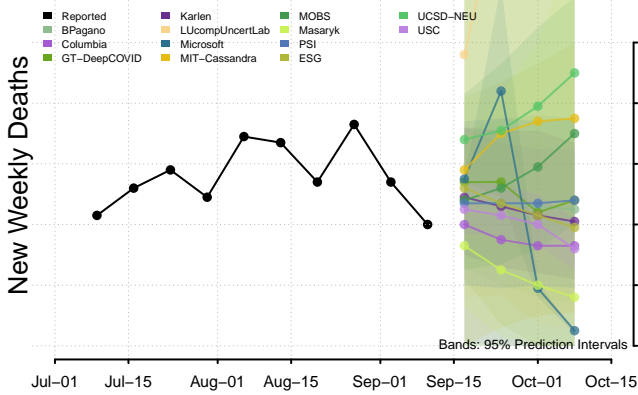
Nevada

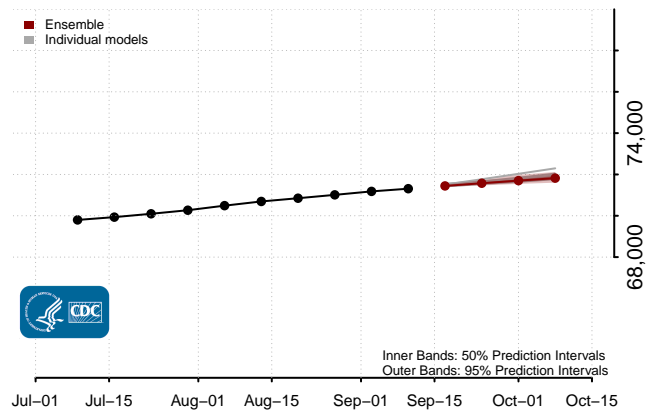
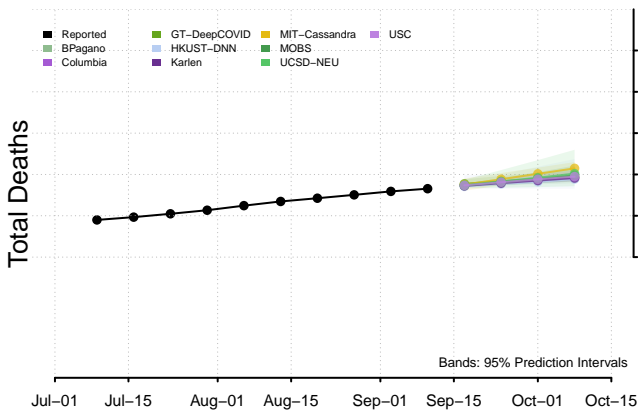
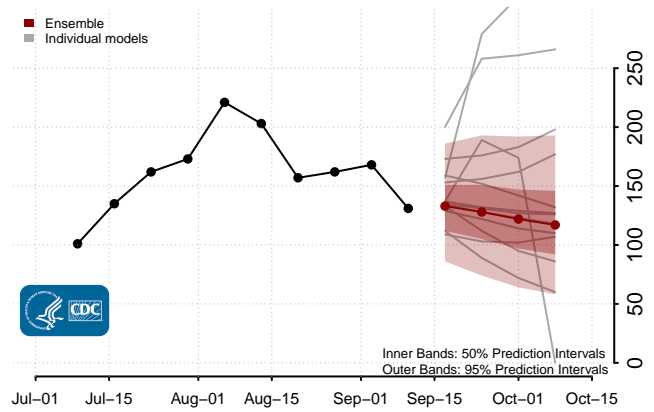
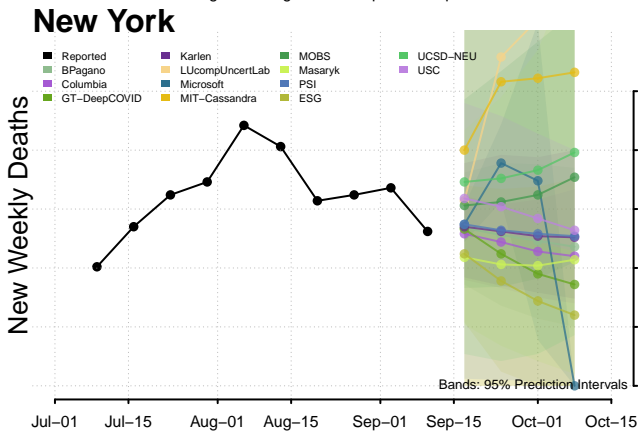
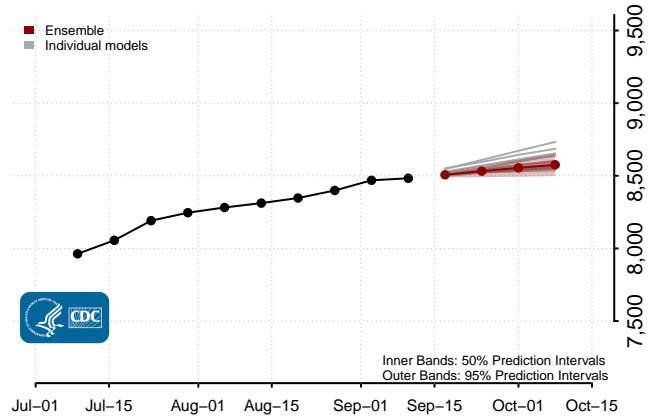
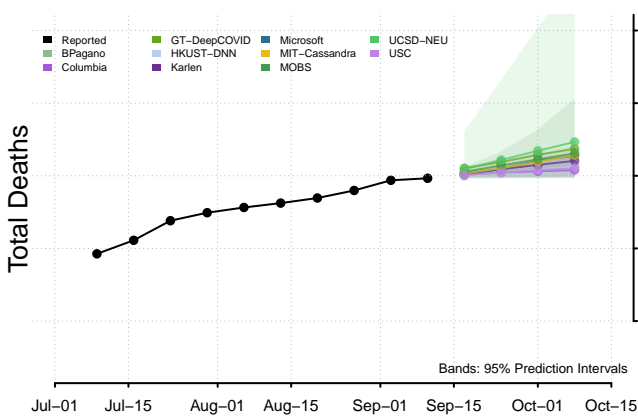
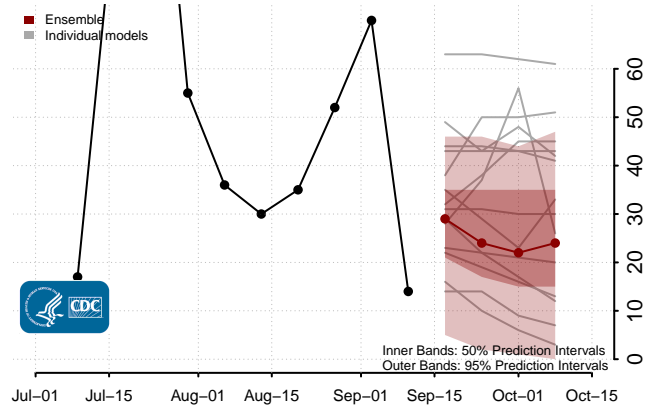
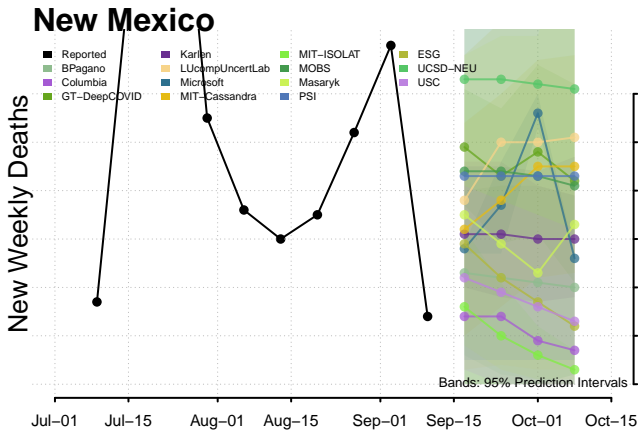


New Hampshire

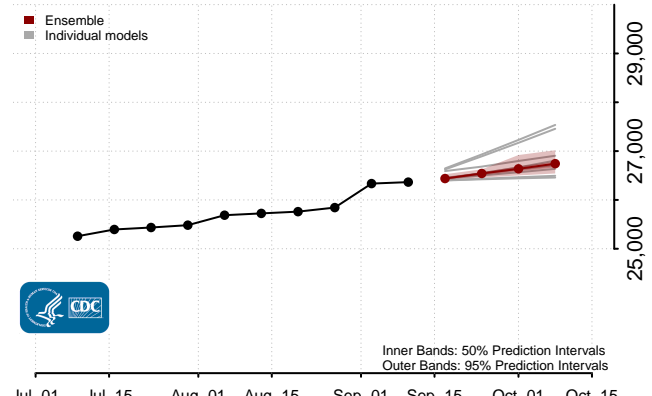
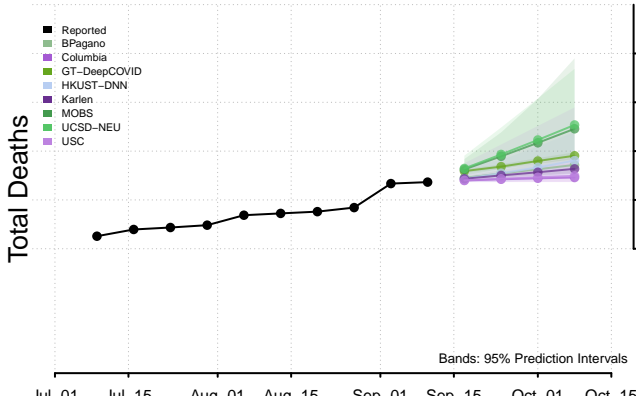
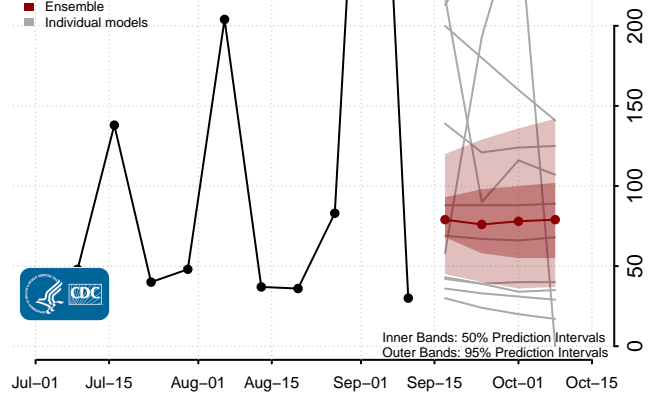
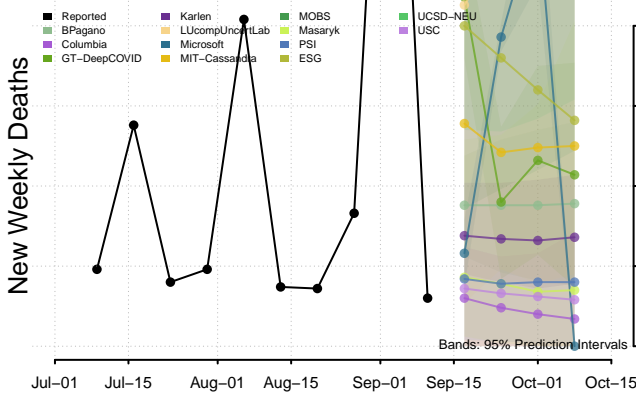


New Jersey

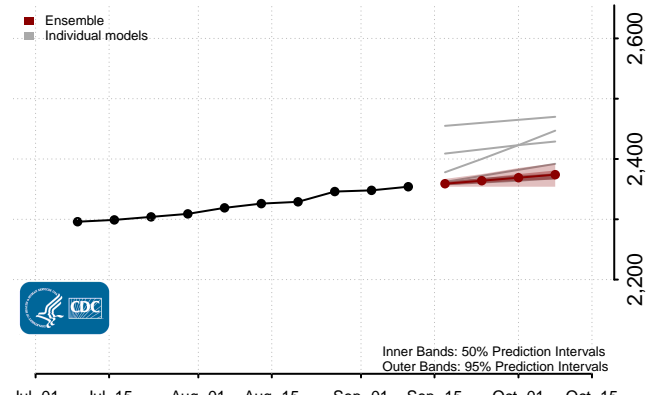
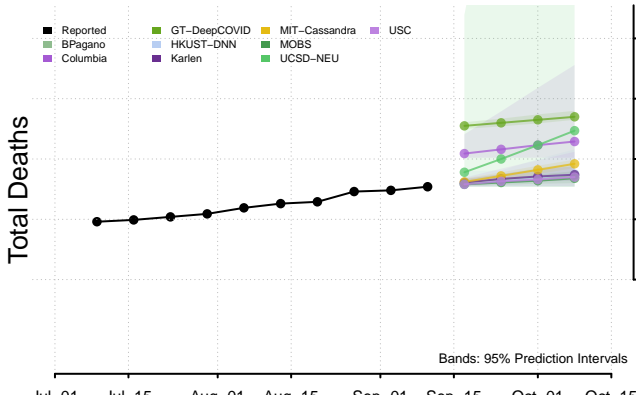
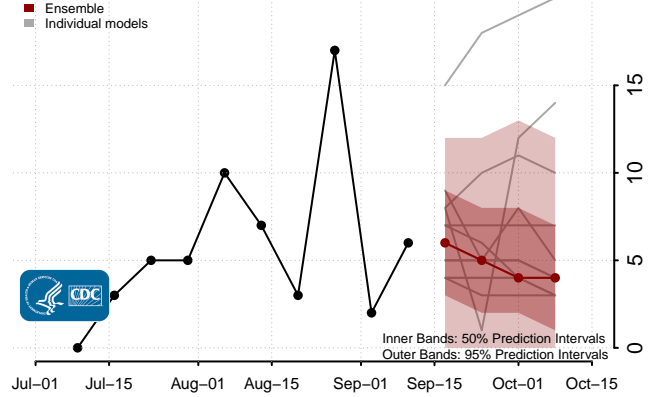
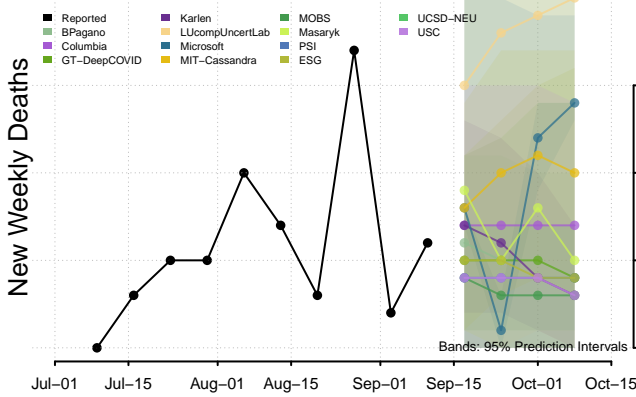




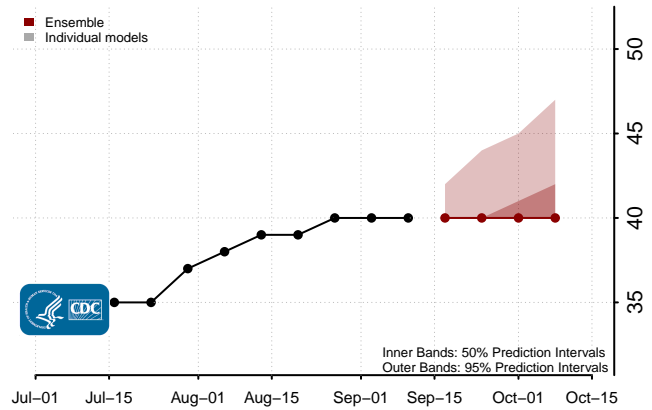
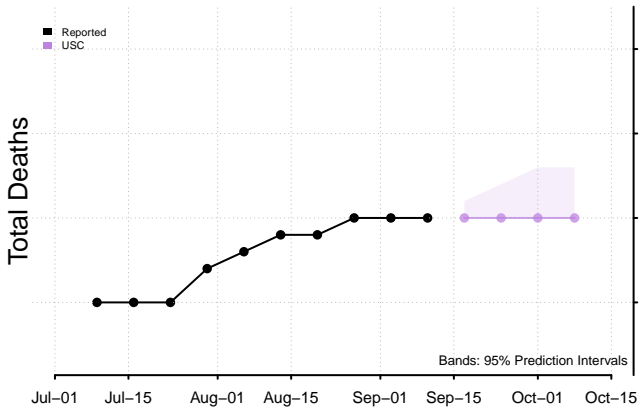
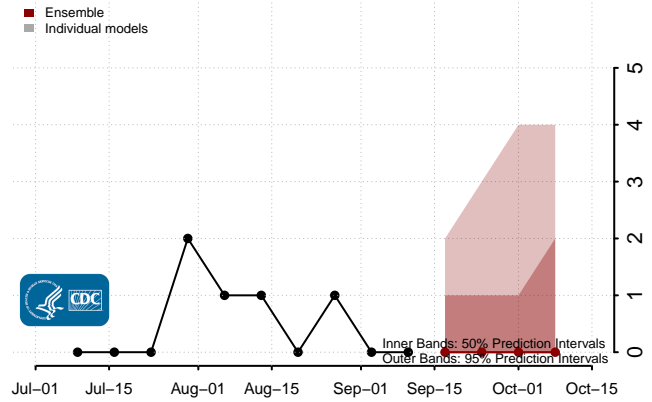
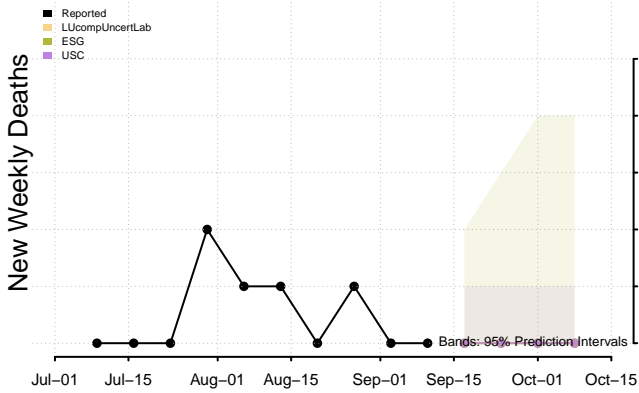
North Carolina



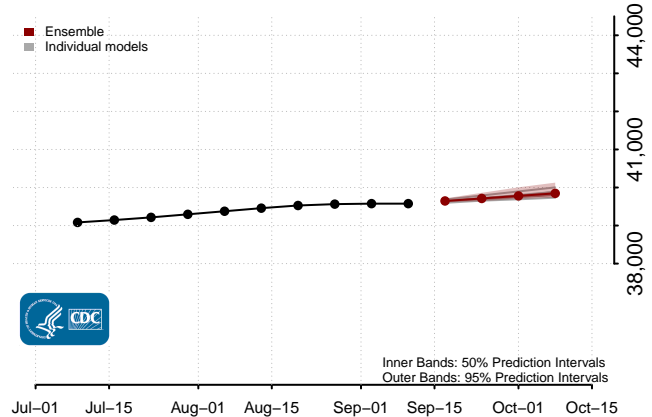
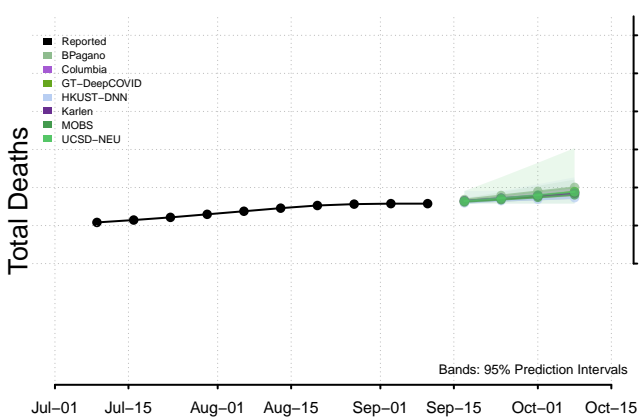
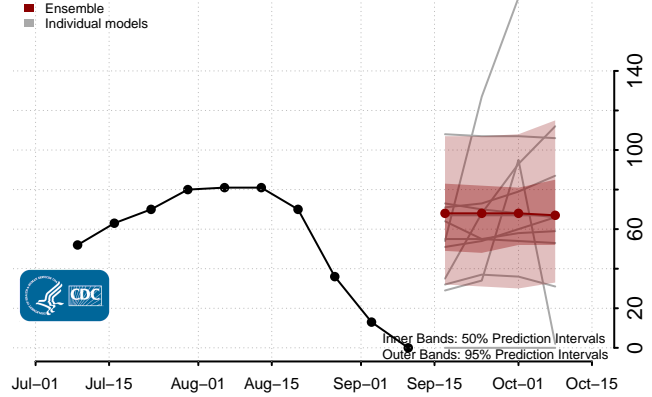
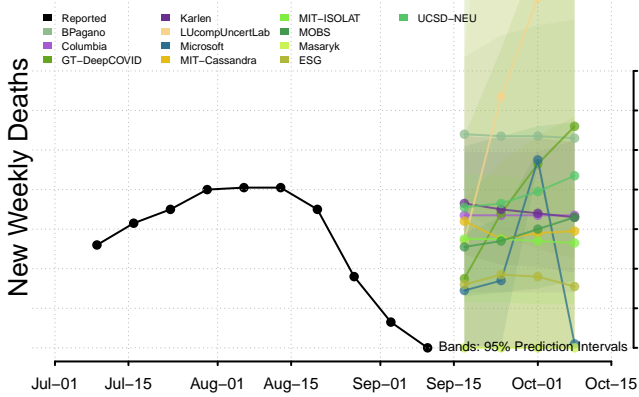
North Dakota



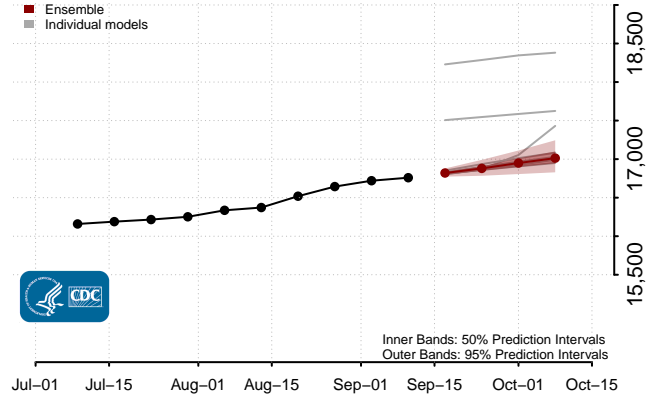
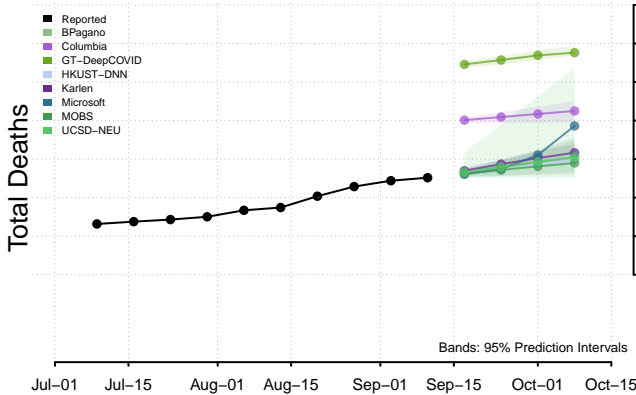
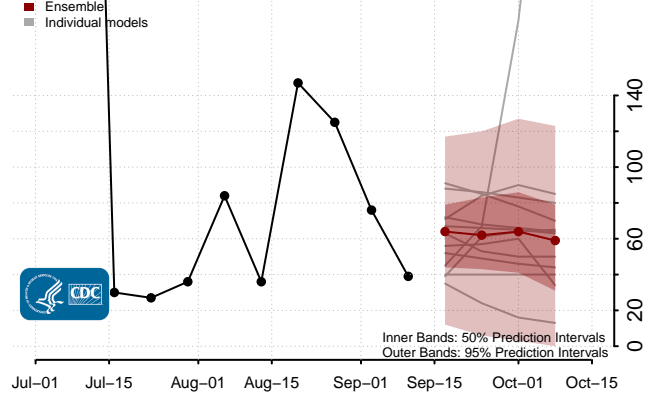
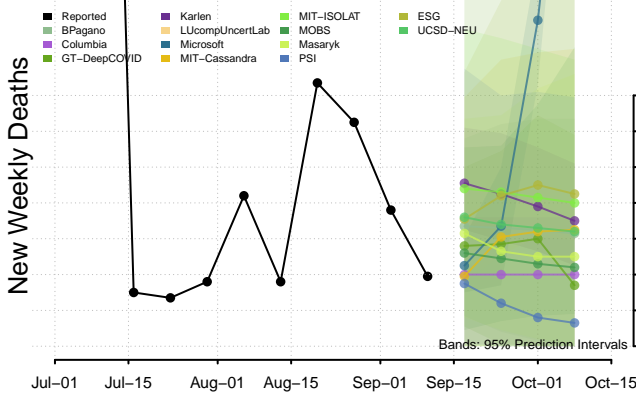
Northern Mariana Islands



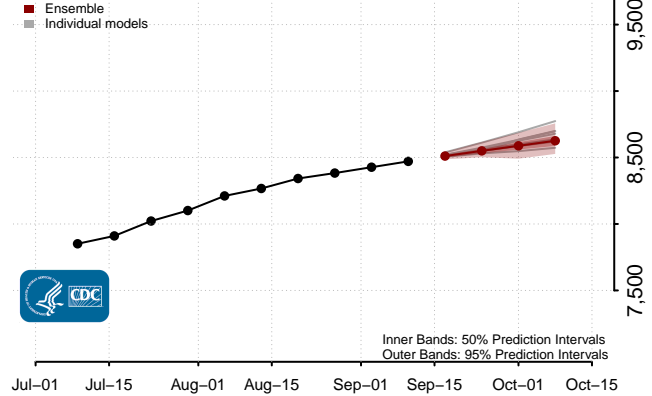
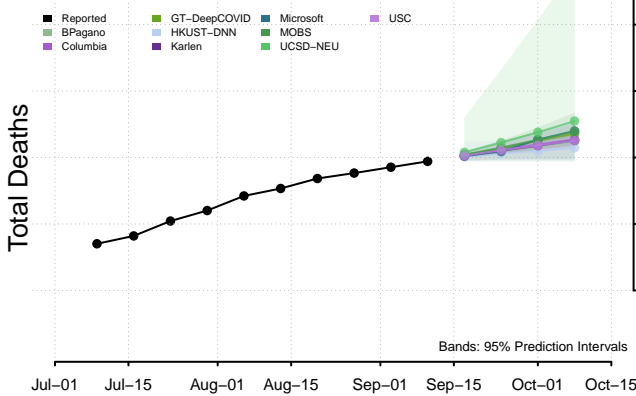
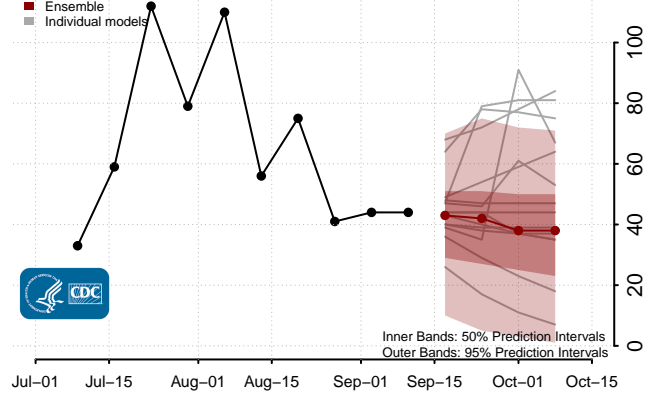
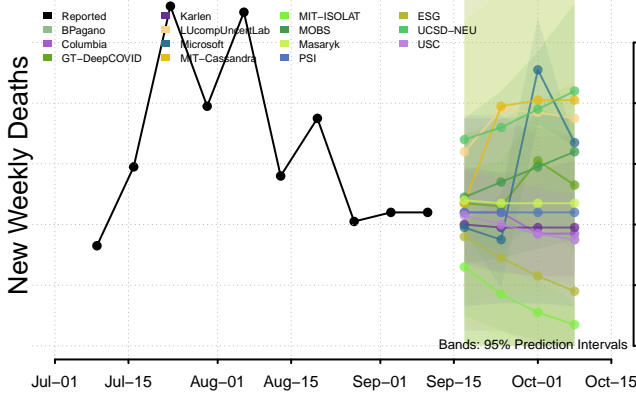
Ohio



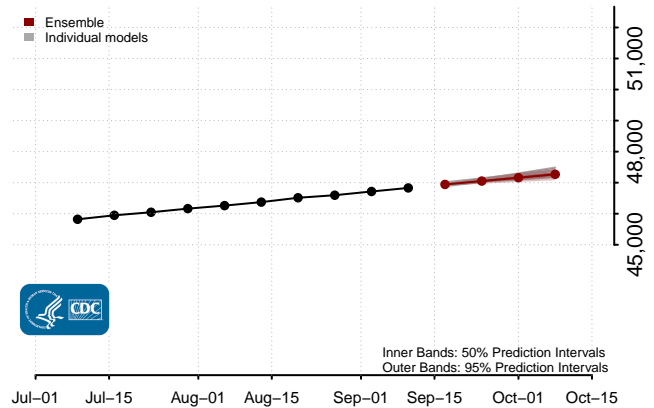
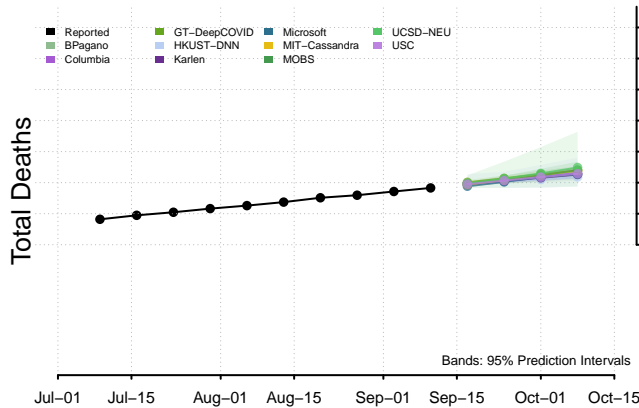
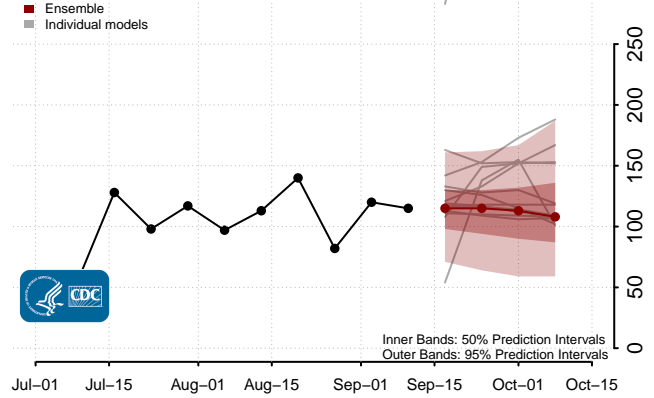
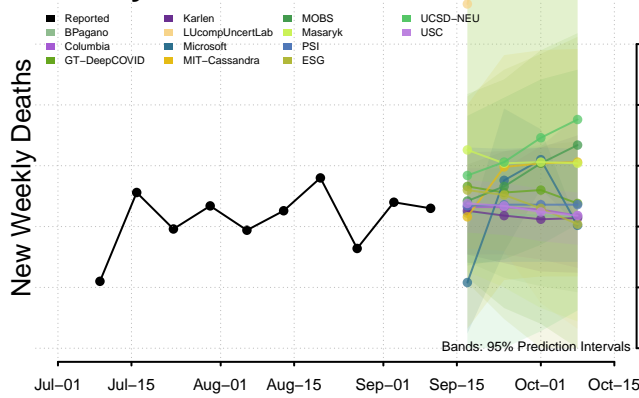
Oklahoma



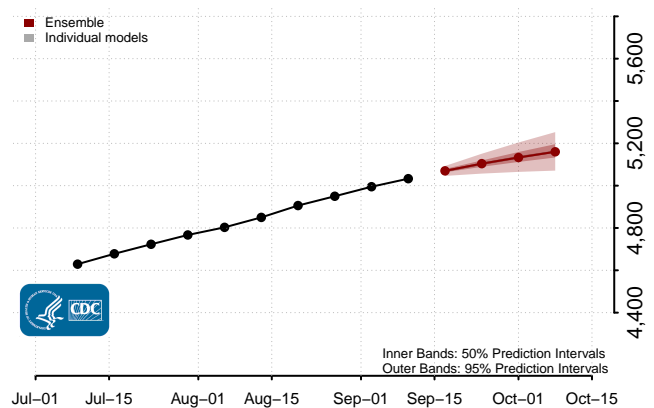
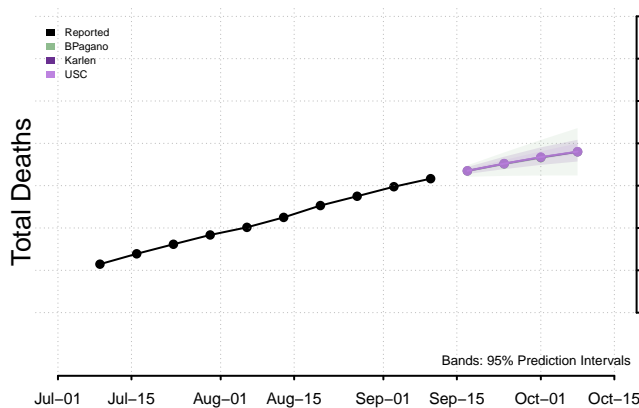
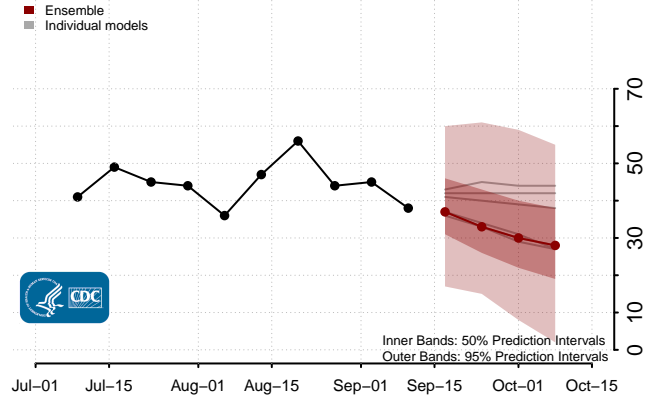
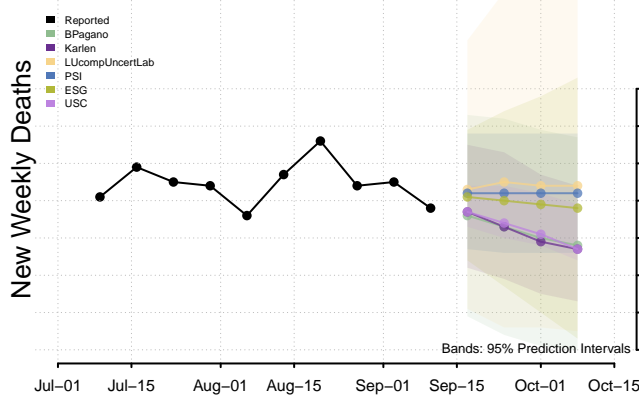
Oregon



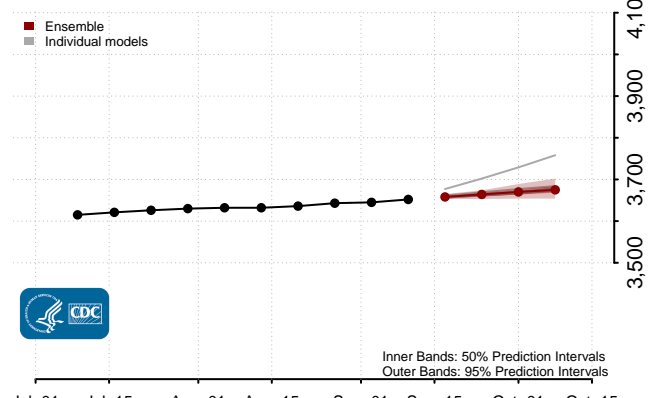
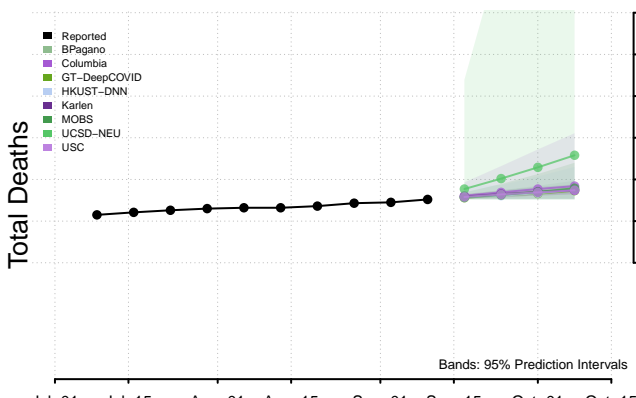
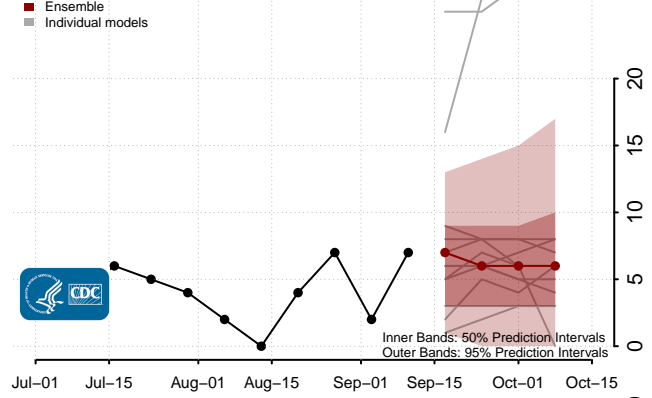
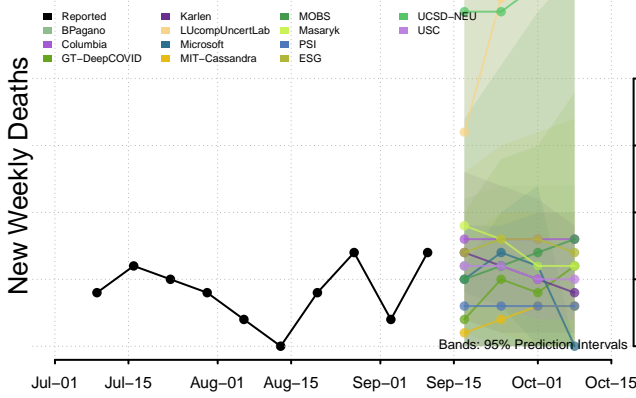
Pennsylvania



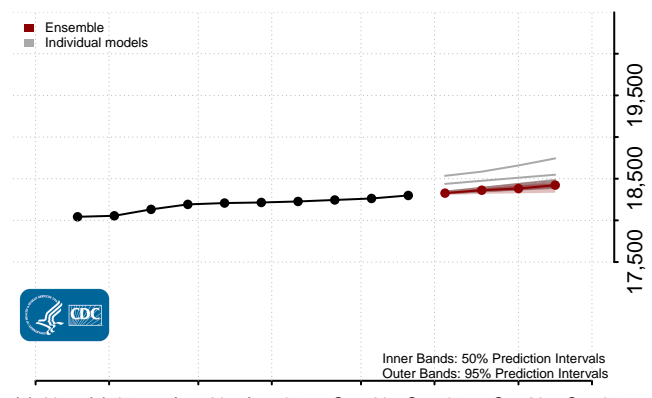
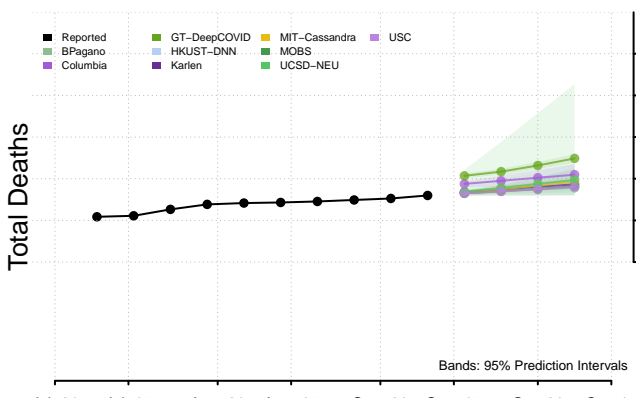
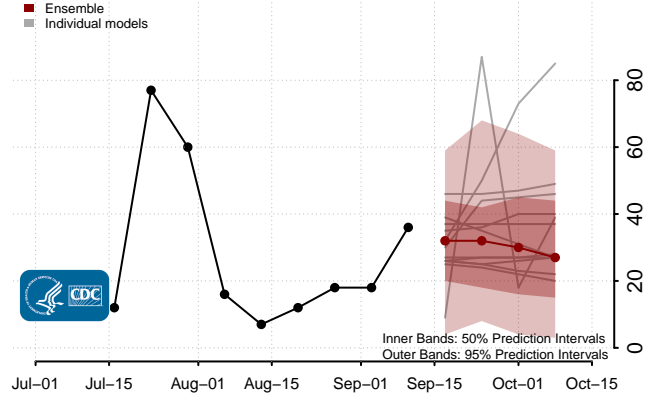
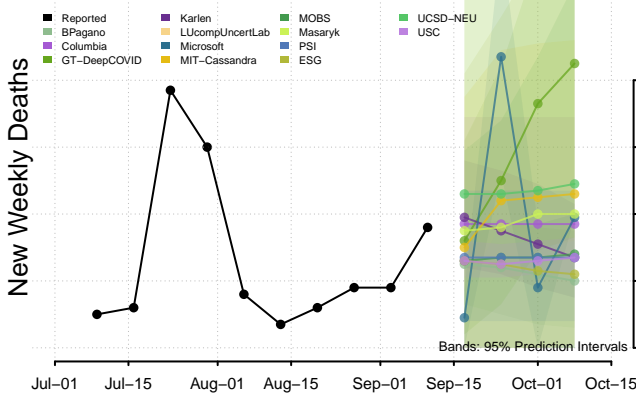
Puerto Rico



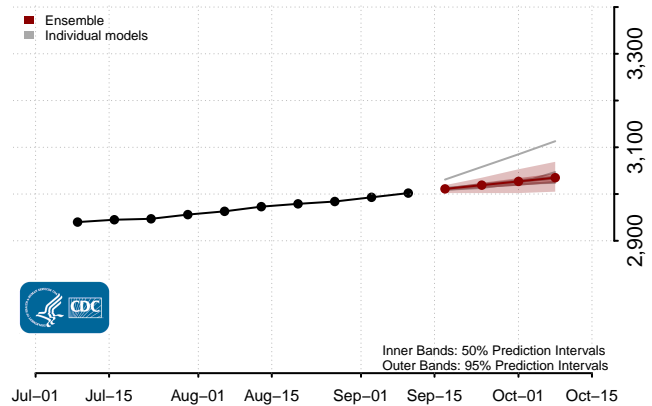
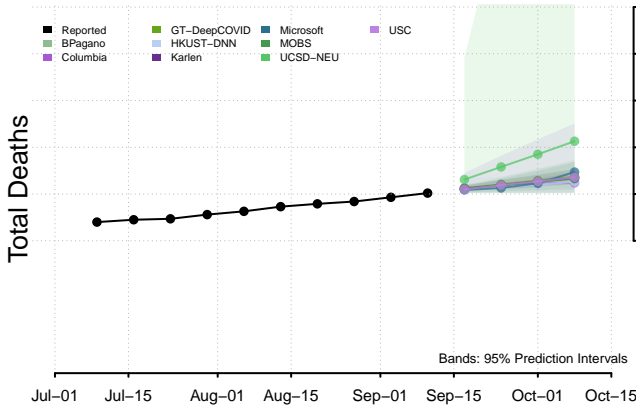
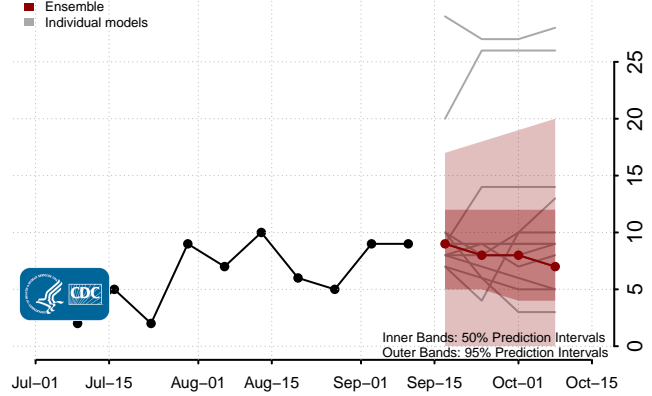
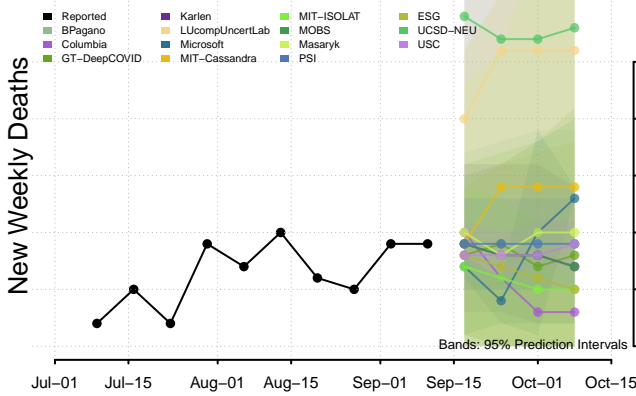
Rhode Island



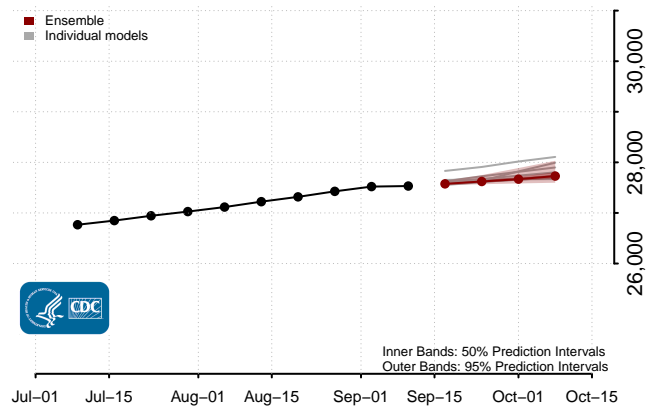
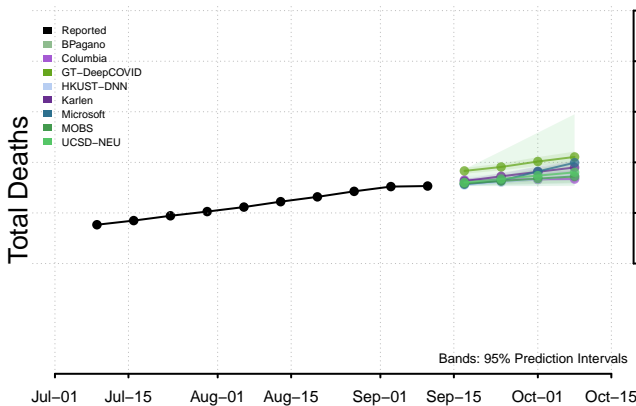
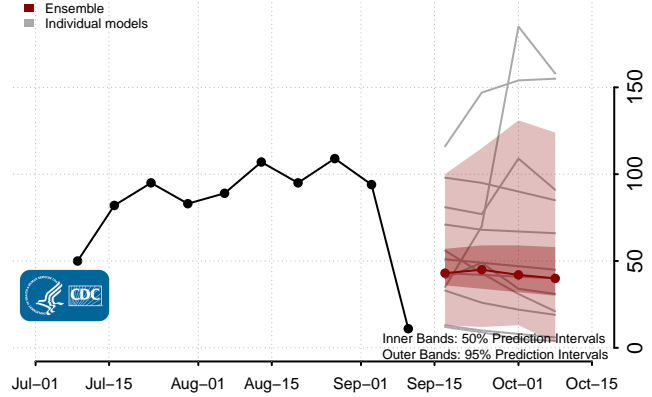
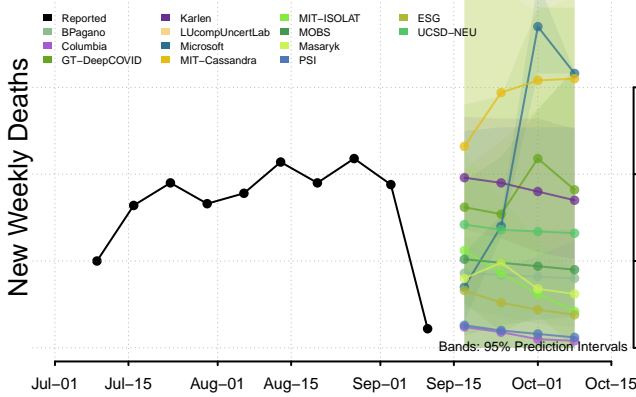
South Carolina



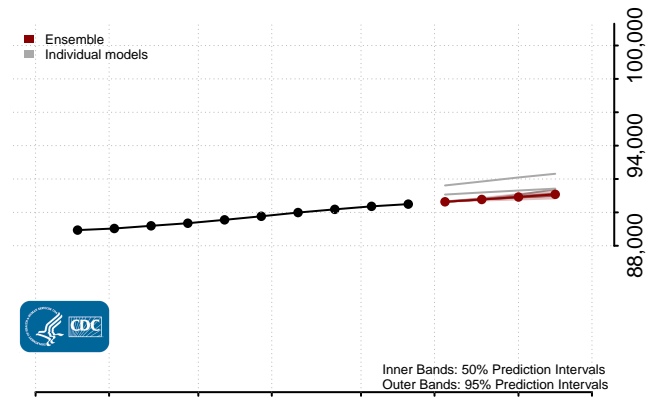
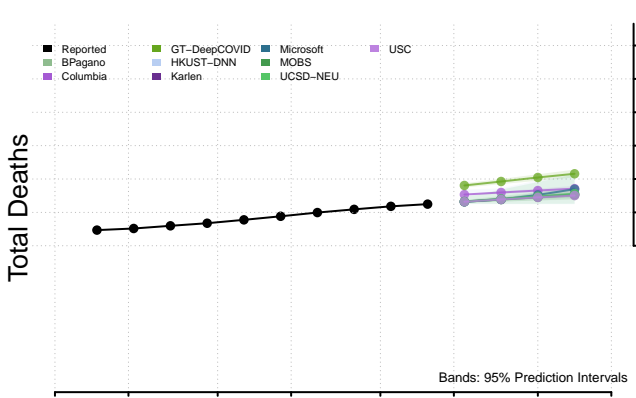
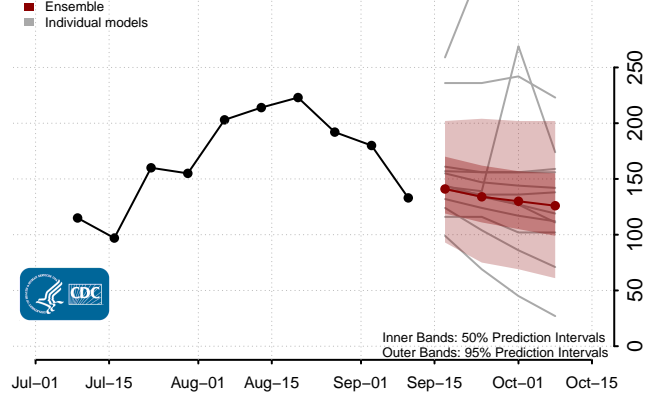
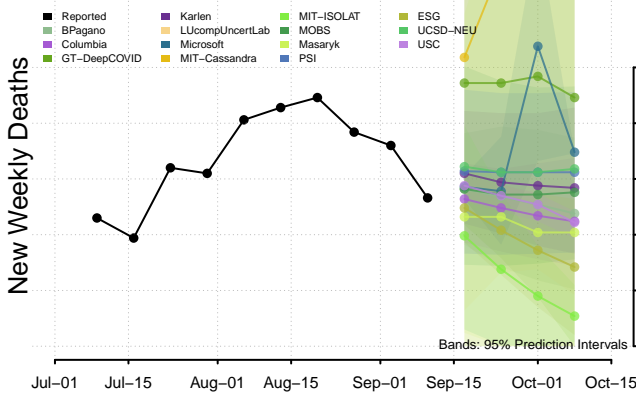
South Dakota



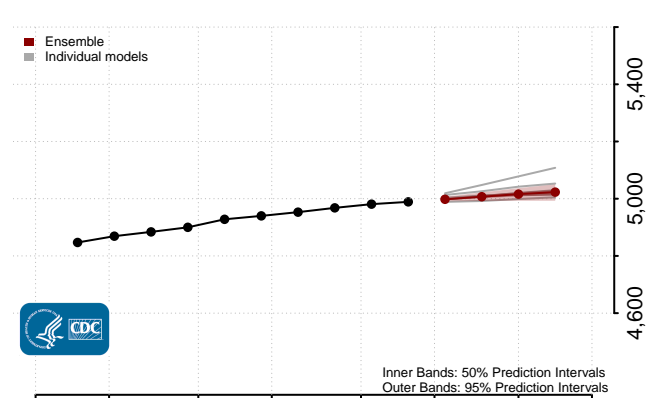
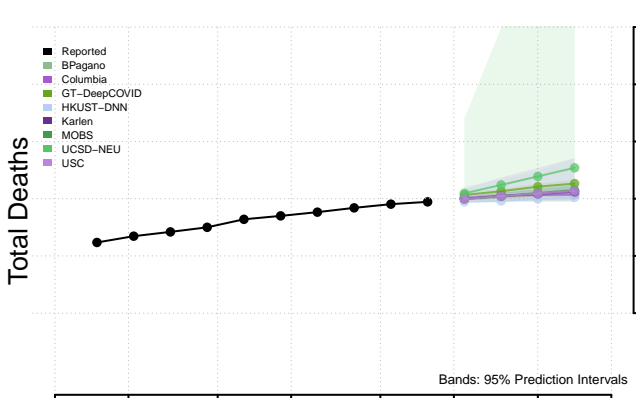
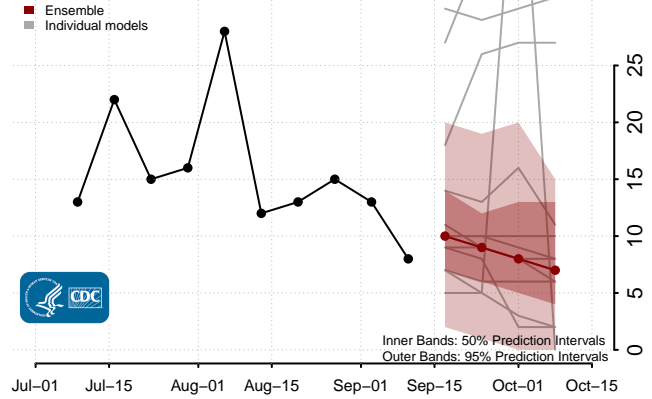
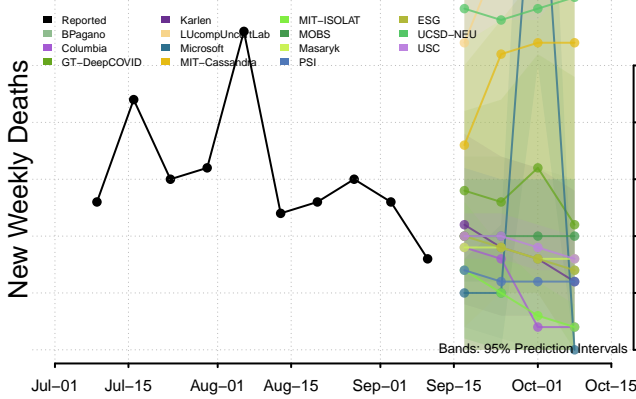
Tennessee



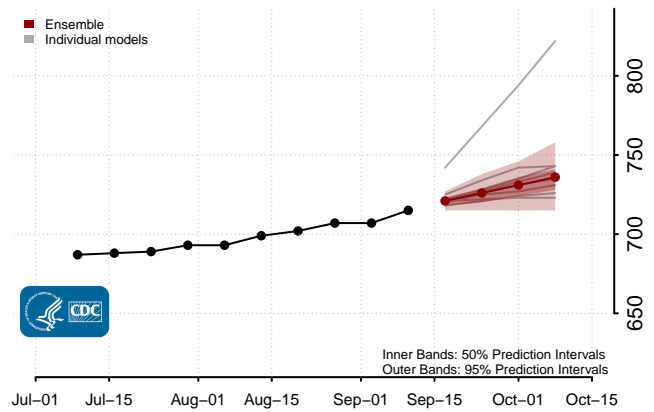
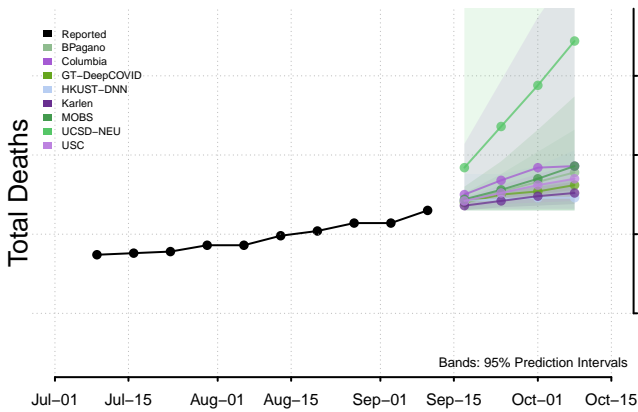
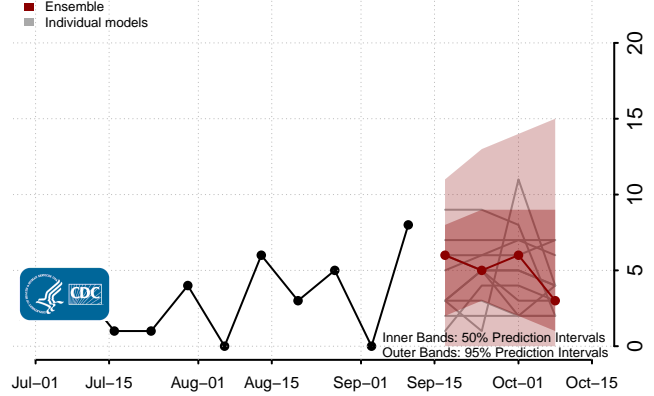
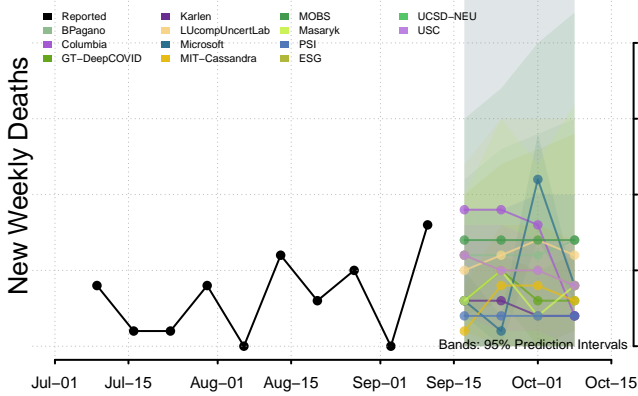
Texas



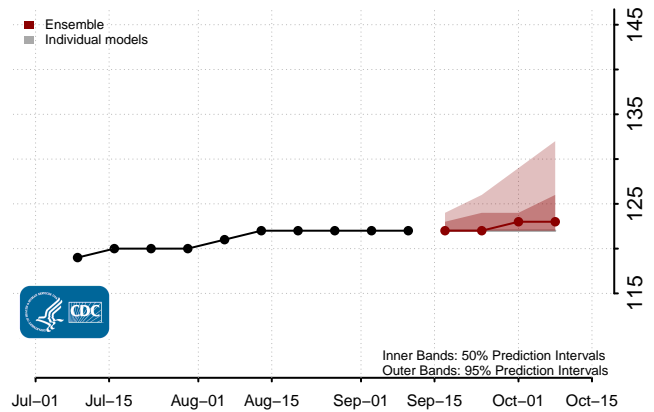
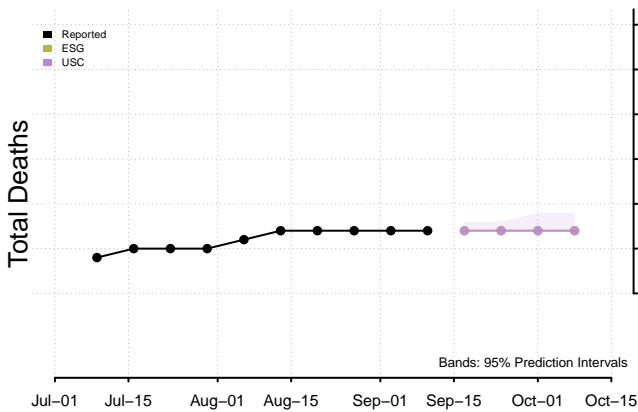
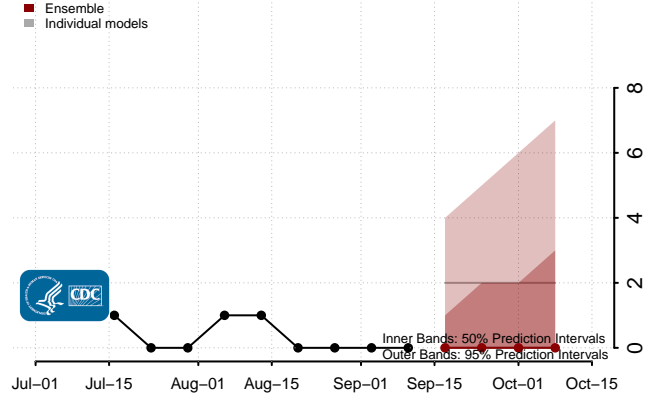
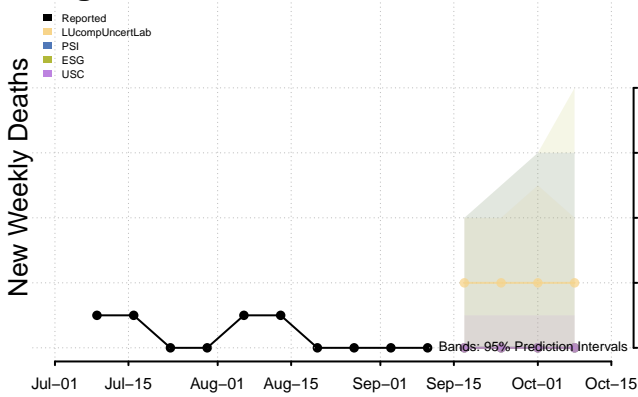
Utah



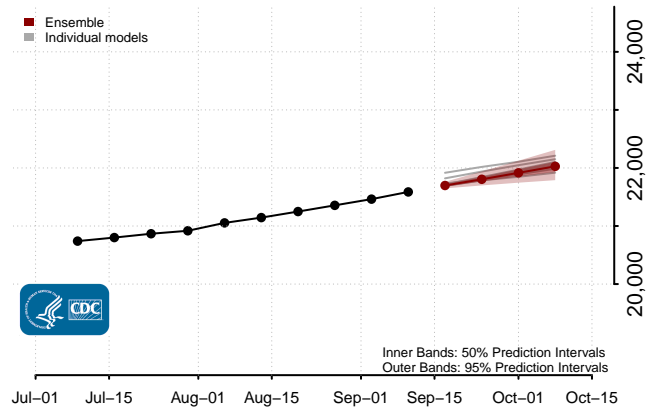
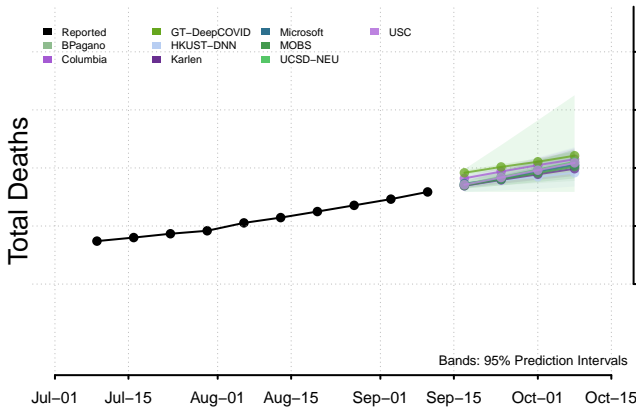
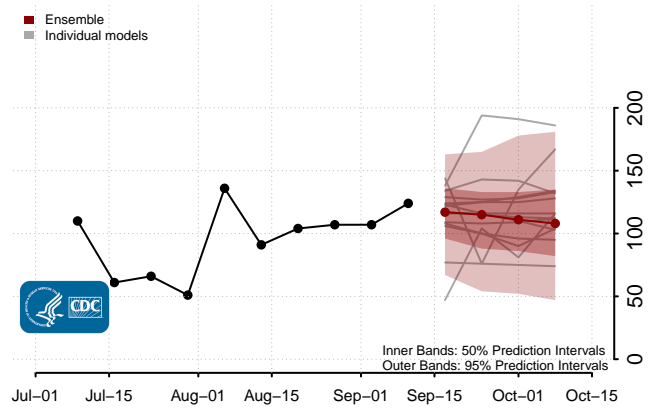
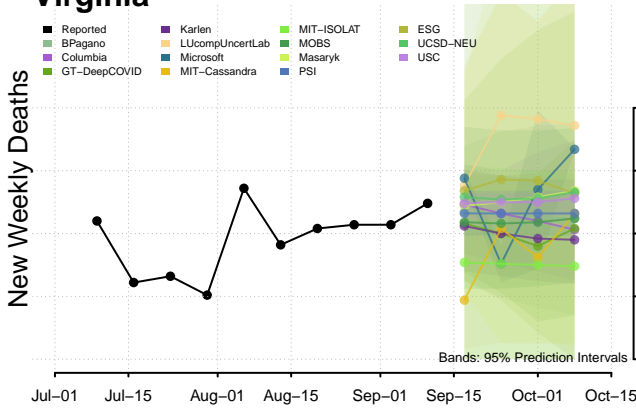
Vermont



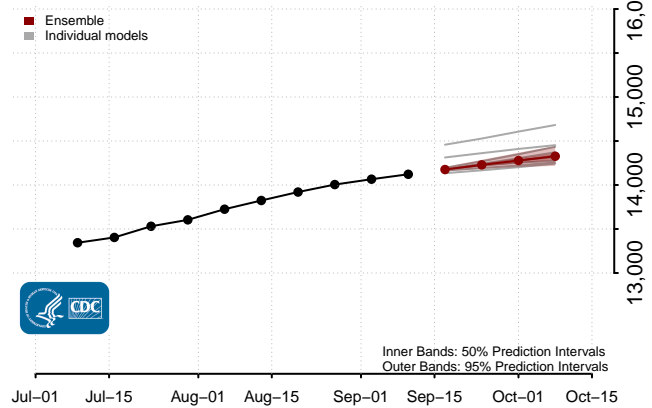
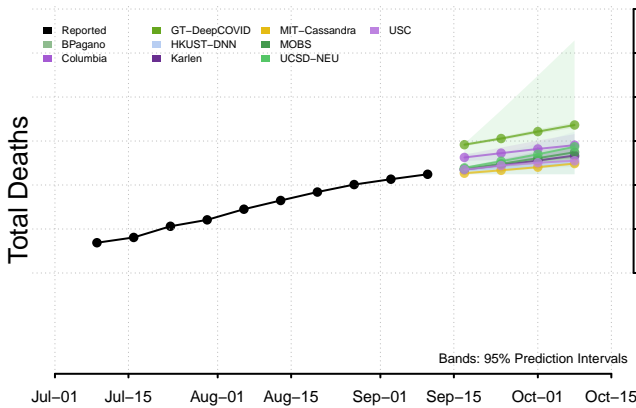
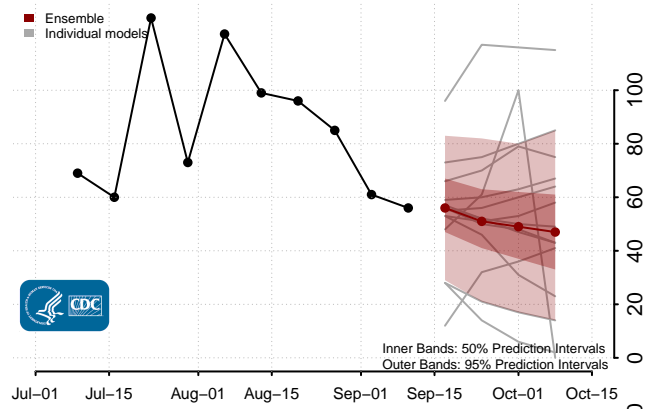
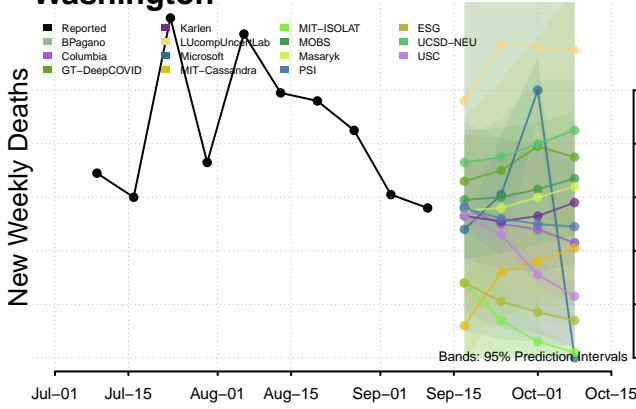
Virgin Islands



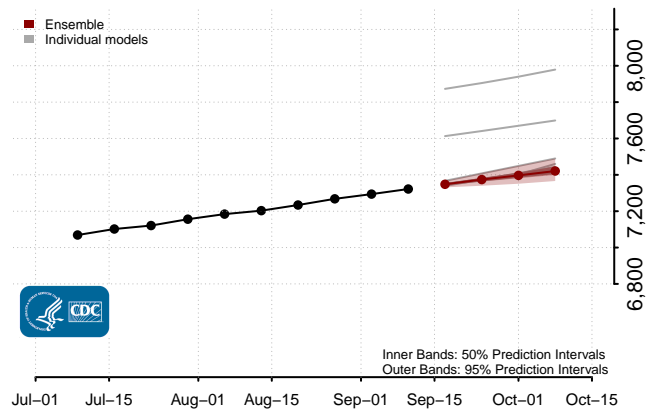
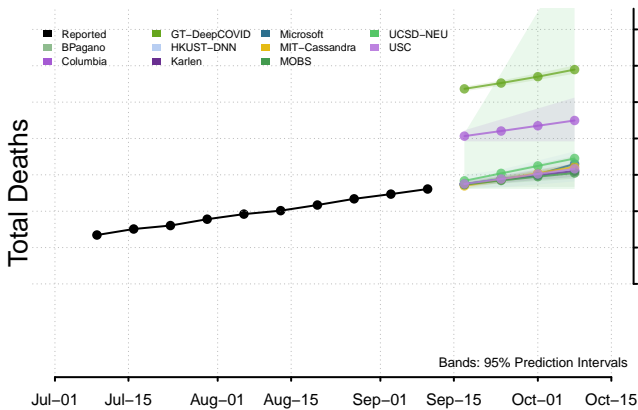
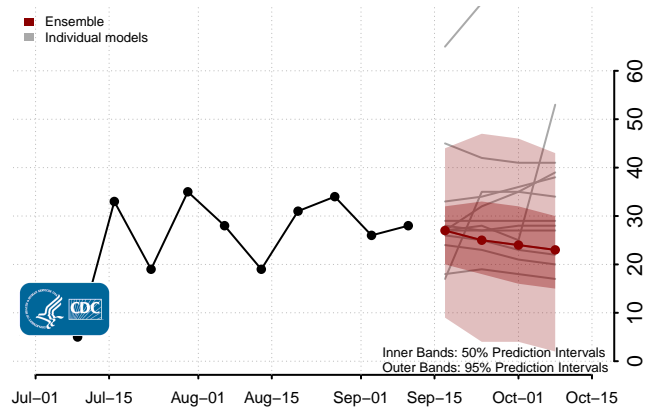
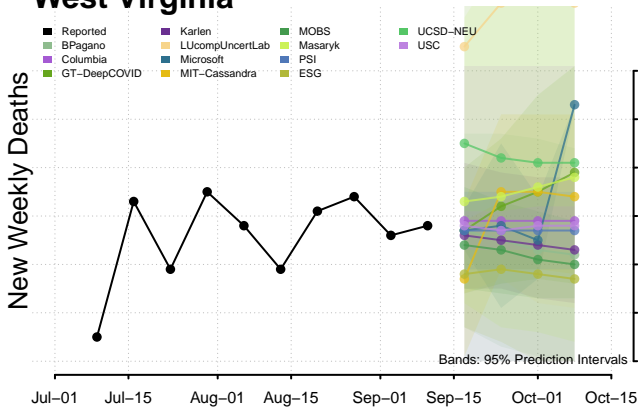
Virginia



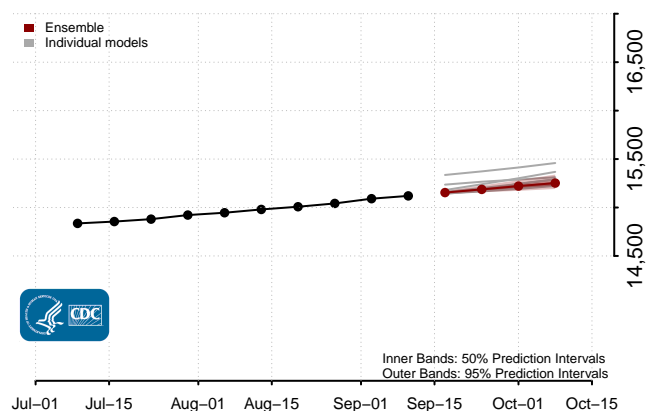
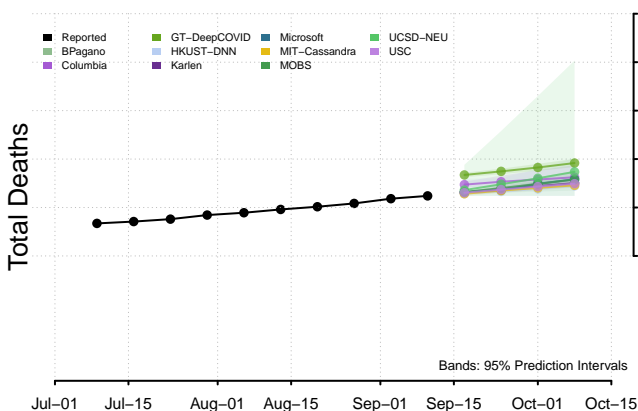
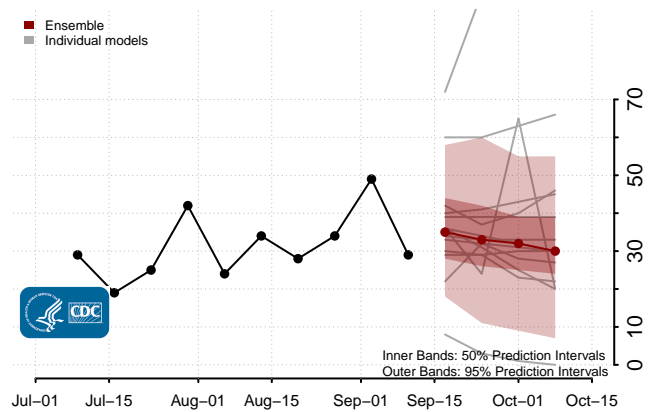
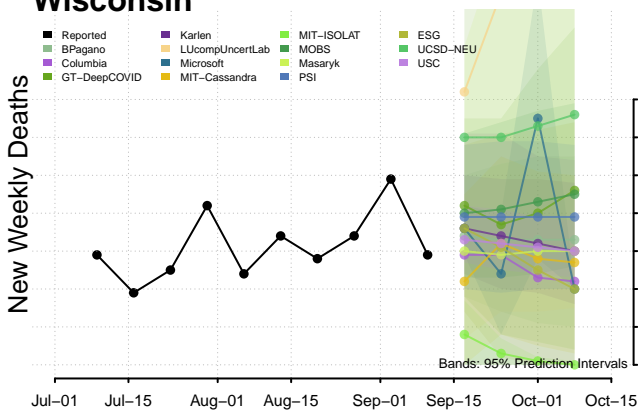
Washington



West Virginia



Wisconsin



Wyoming

