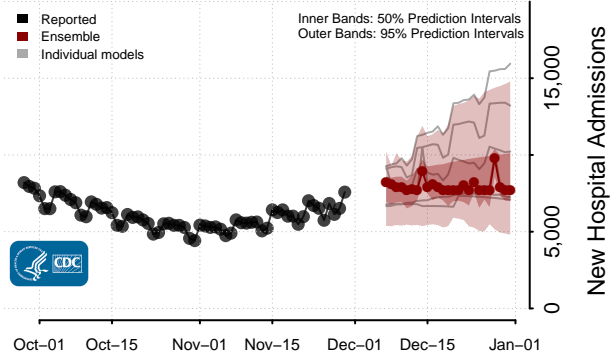
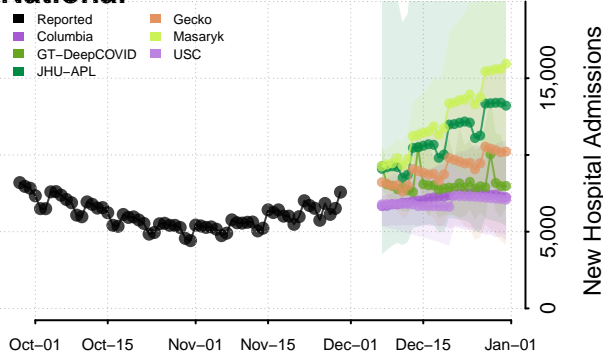
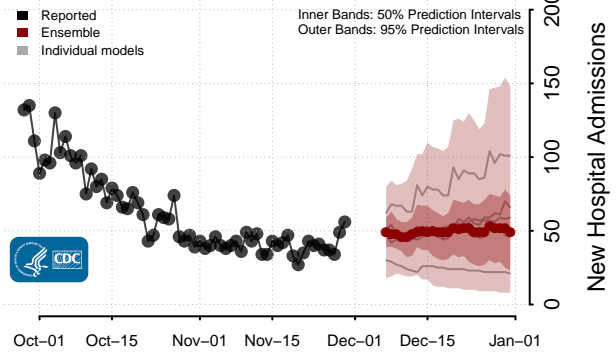
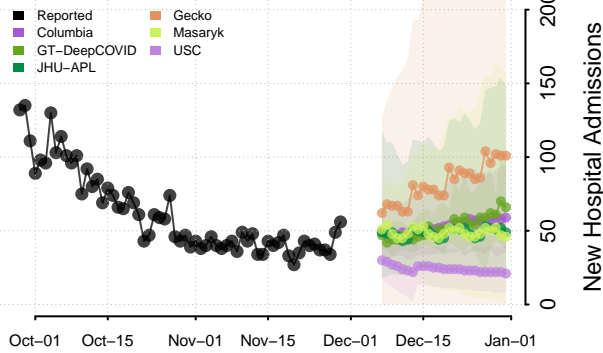


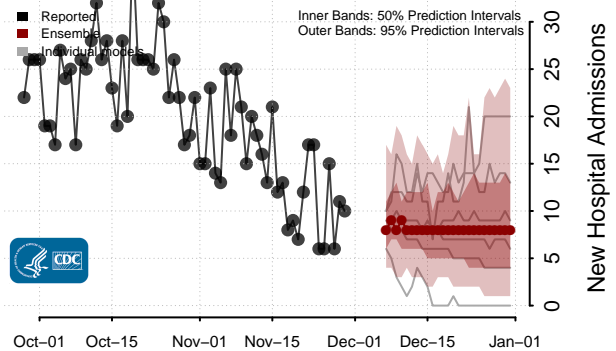
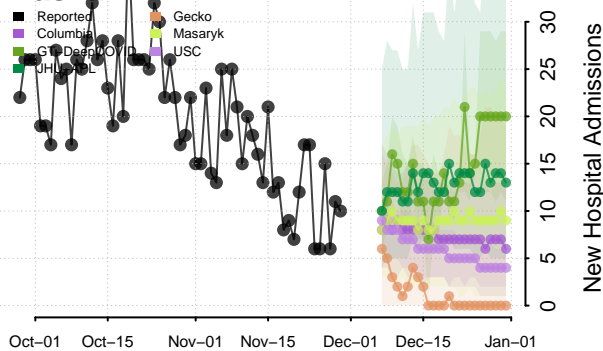
### National\*\*



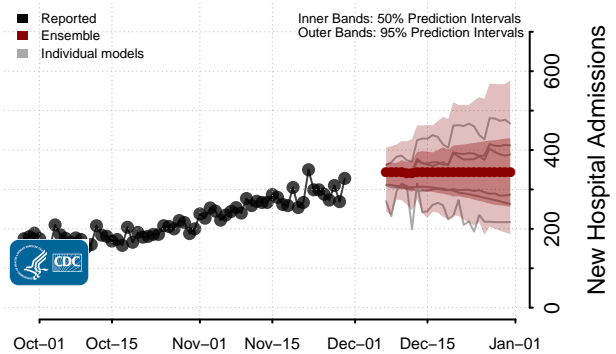
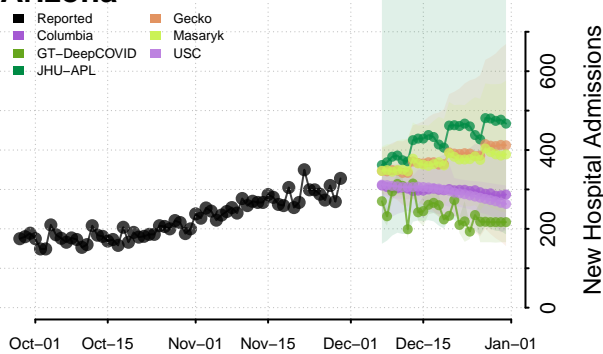
### Alabama



### Alaska

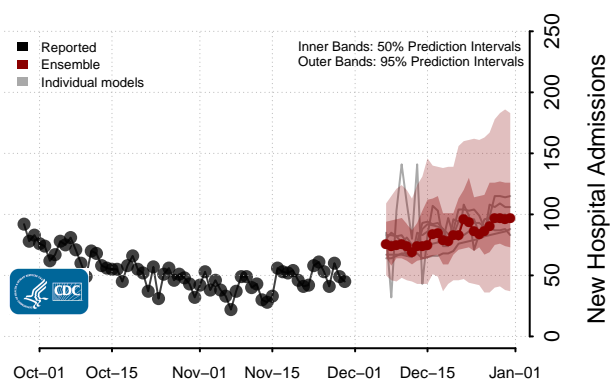
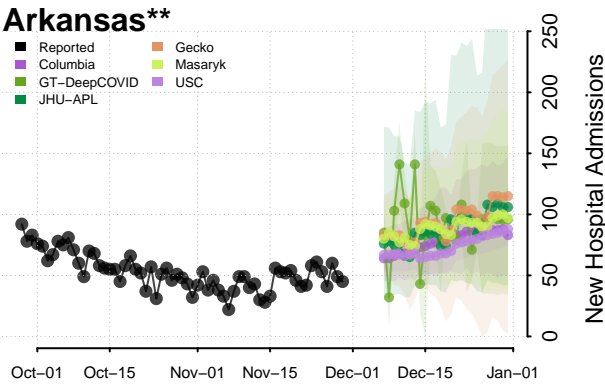


### Arizona

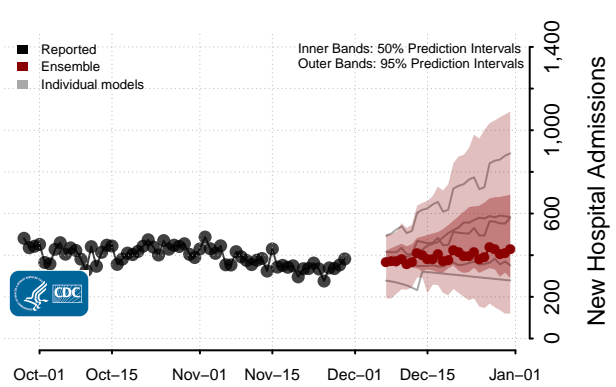
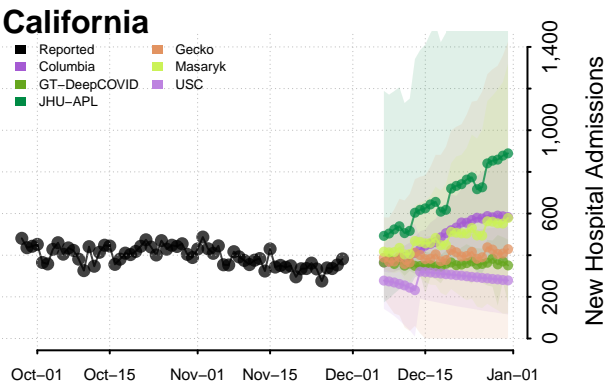


\*\*New daily confirmed COVID-19 hospital admissions may increase in this location over the next four weeks. For these locations, the ensemble forecast indicates a median daily probability of 0.75 or greater that more hospital admissions will be reported in the last seven days of the forecast than the median in the last seven days of reported data.

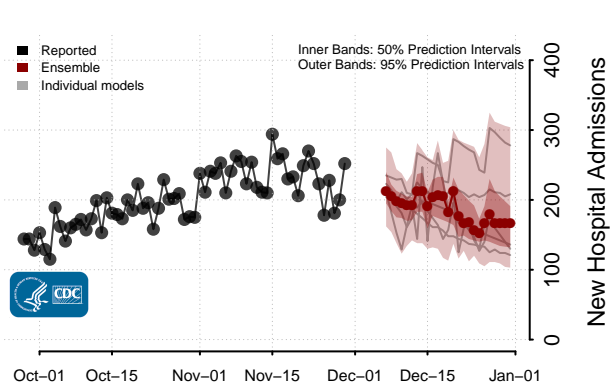
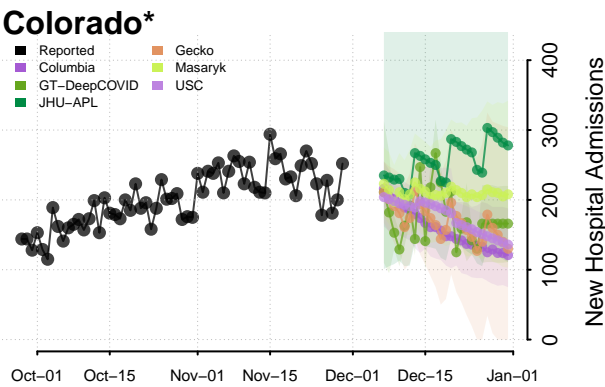
### Arkansas\*\*



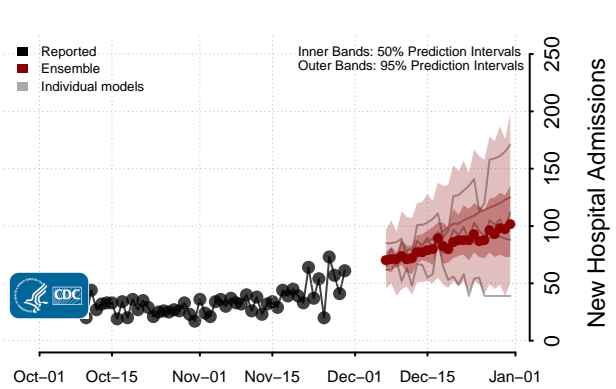
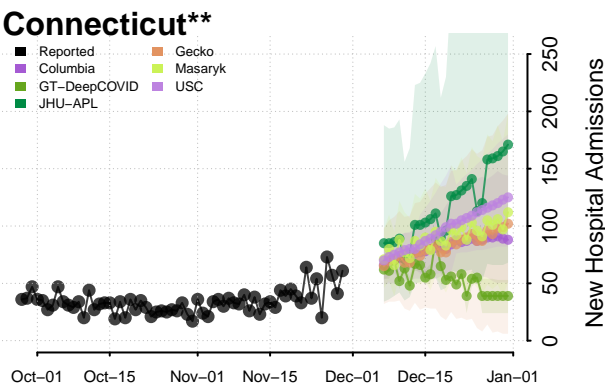
### California



### Colorado\*



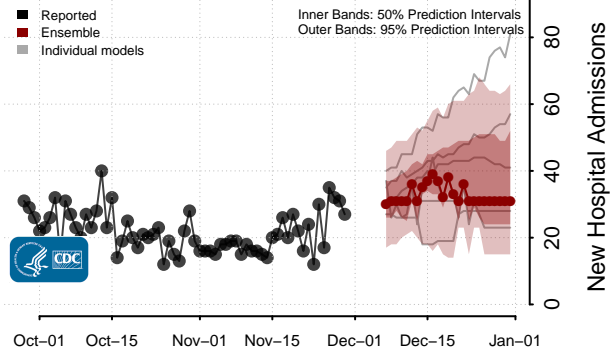
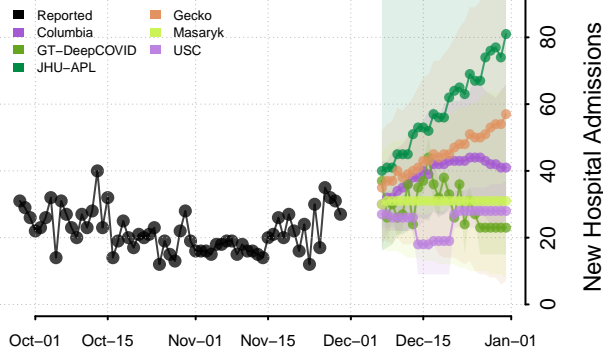
### Connecticut\*\*



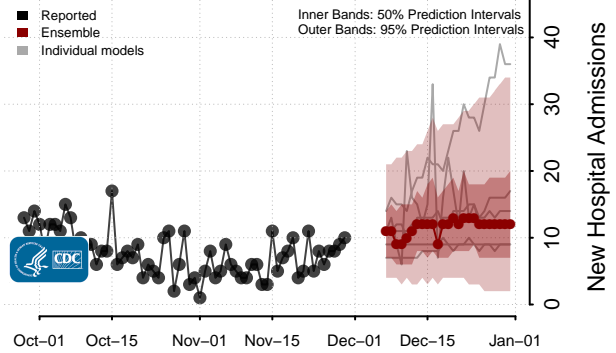
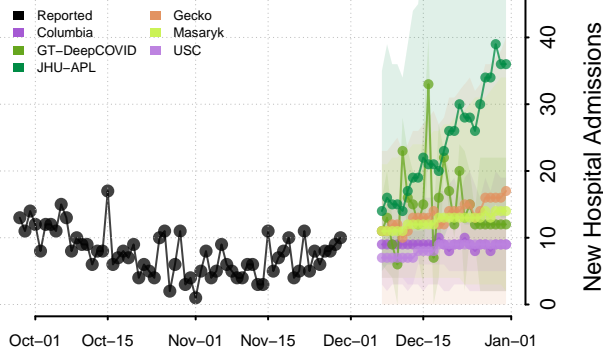
\*New daily confirmed COVID-19 hospital admissions may decrease in this location over the next four weeks. For these locations, the ensemble forecast indicates a median daily probability of 0.75 or greater that fewer hospital admissions will be reported in the last seven days of the forecast than the median in the last seven days of reported data.

\*\*New daily confirmed COVID-19 hospital admissions may increase in this location over the next four weeks. For these locations, the ensemble forecast indicates a median daily probability of 0.75 or greater that more hospital admissions will be reported in the last seven days of the forecast than the median in the last seven days of reported data.

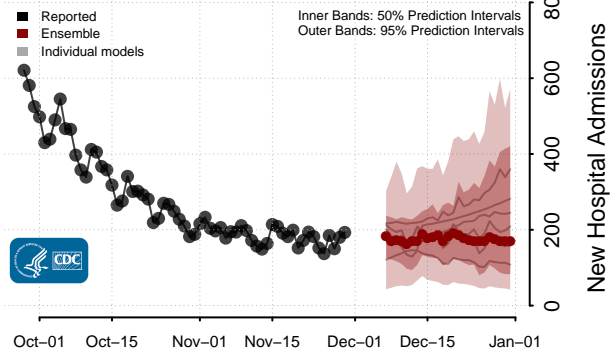
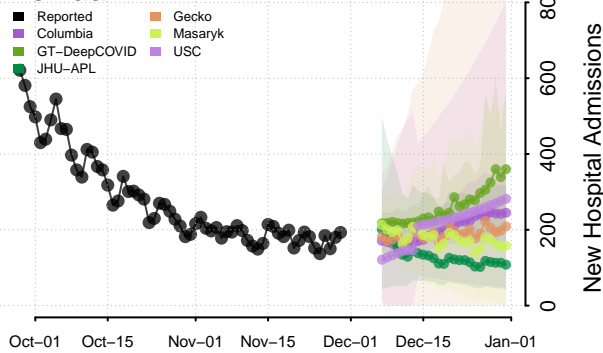
### Delaware



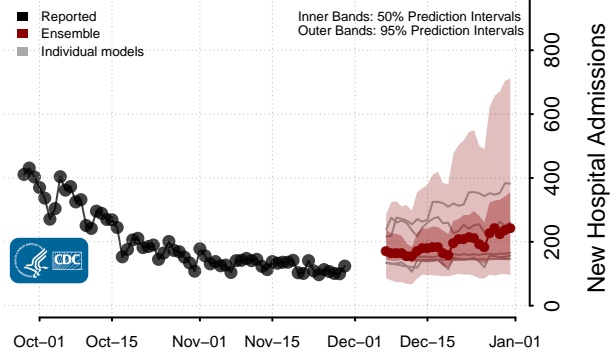
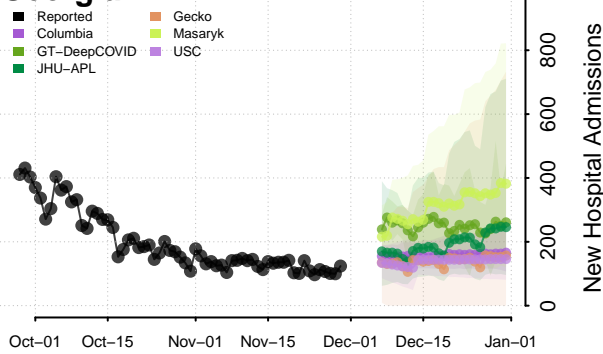
### District of Columbia



### Florida

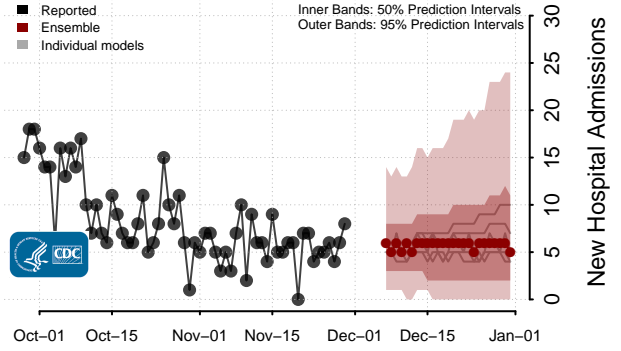
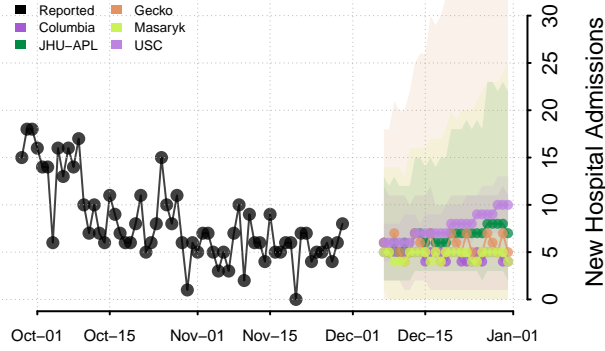


### Georgia\*\*

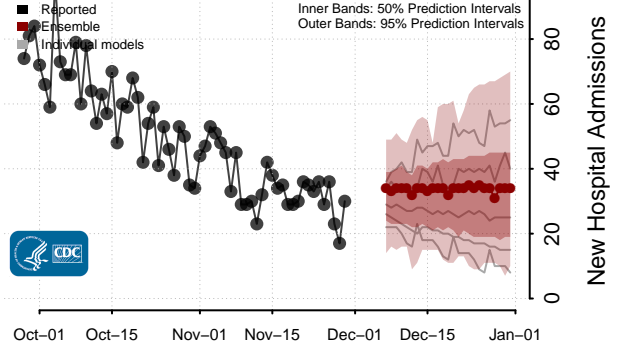
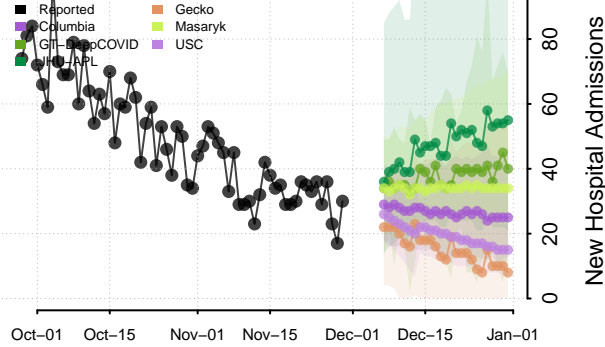


\*\*New daily confirmed COVID-19 hospital admissions may increase in this location over the next four weeks. For these locations, the ensemble forecast indicates a median daily probability of 0.75 or greater that more hospital admissions will be reported in the last seven days of the forecast than the median in the last seven days of reported data.

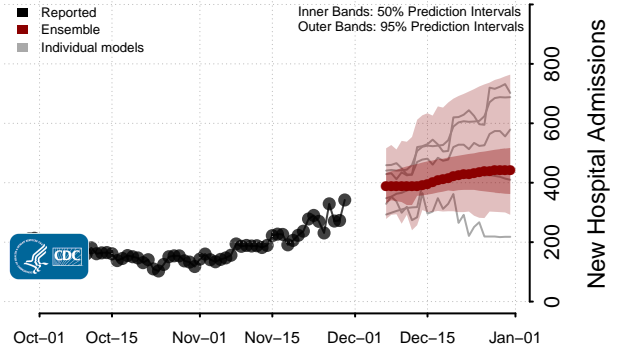
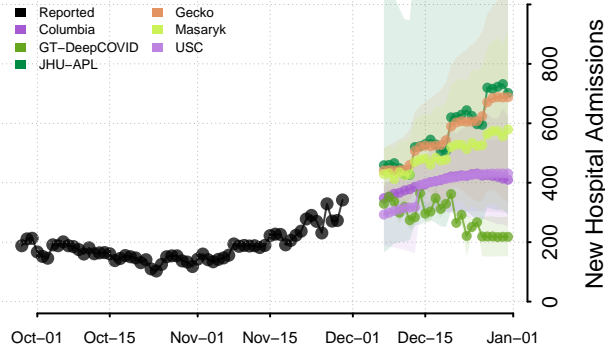
### Hawaii



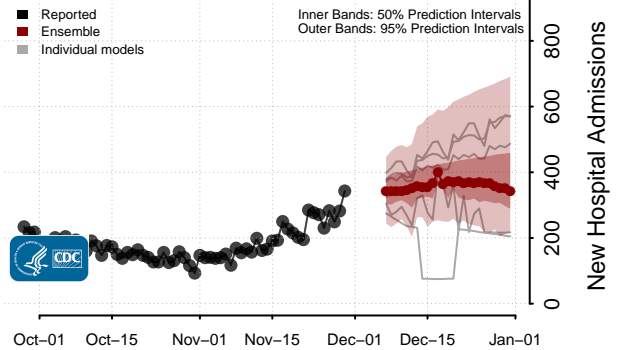
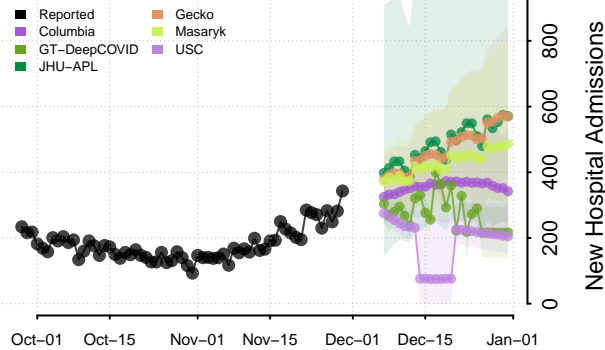
### Idaho



### Illinois\*\*

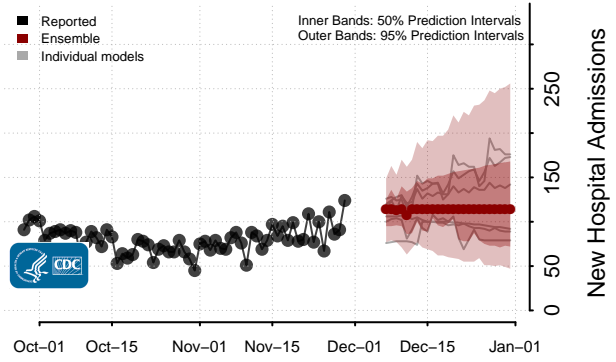
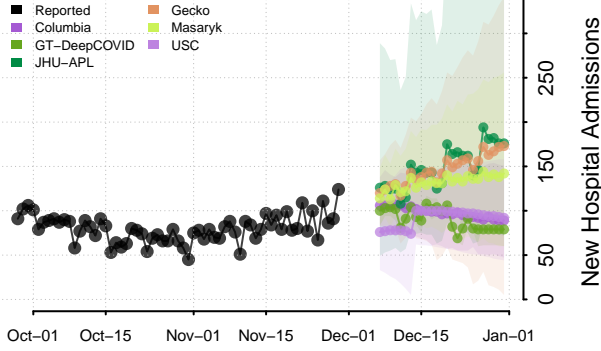


### Indiana\*\*

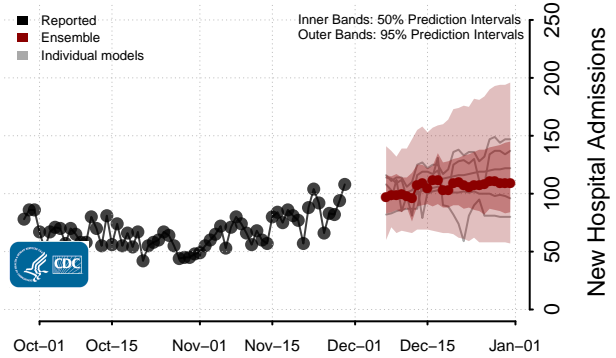
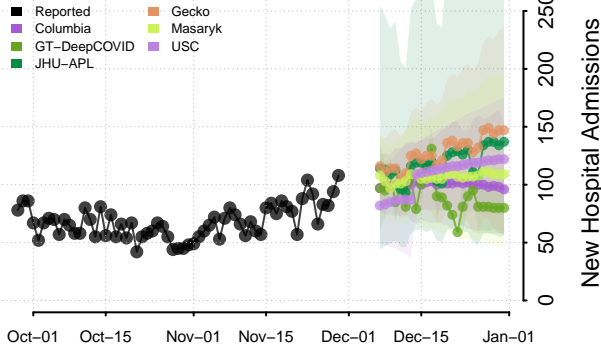


\*\*New daily confirmed COVID-19 hospital admissions may increase in this location over the next four weeks. For these locations, the ensemble forecast indicates a median daily probability of 0.75 or greater that more hospital admissions will be reported in the last seven days of the forecast than the median in the last seven days of reported data.

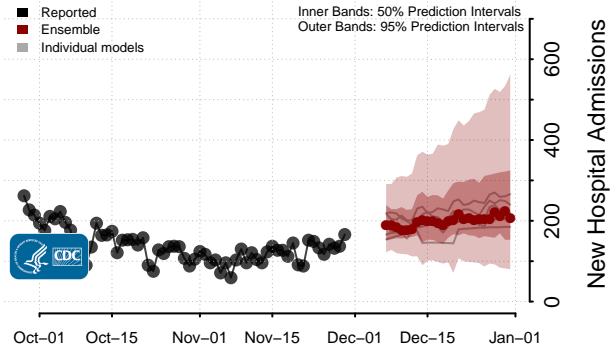
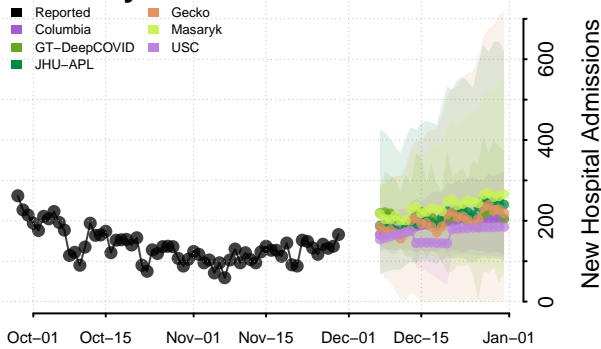
### Iowa



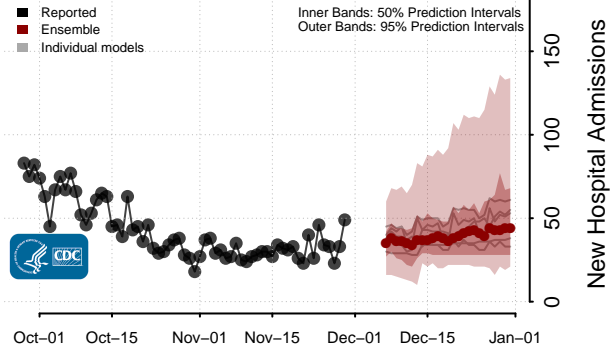
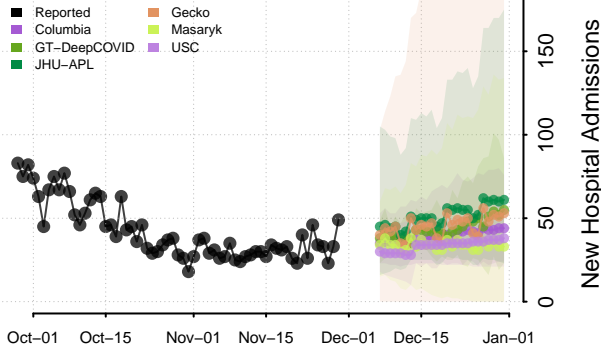
### Kansas



### Kentucky\*\*

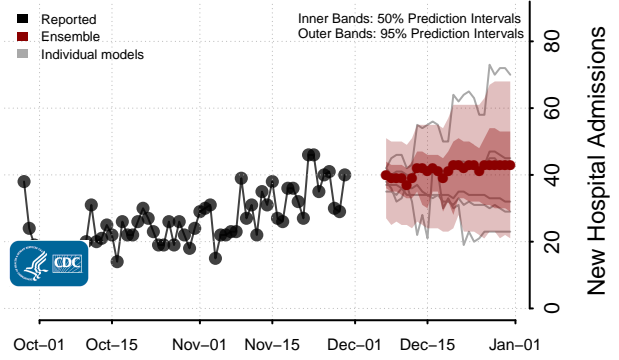
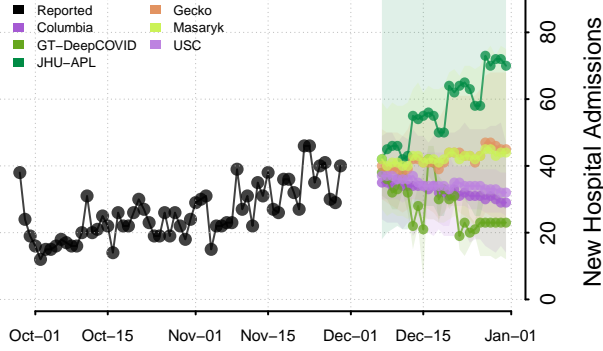


### Louisiana

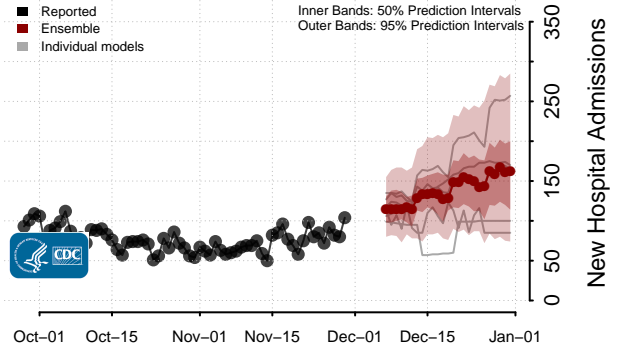
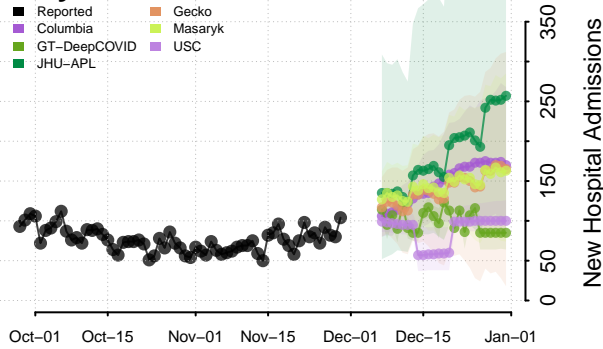


\*\*New daily confirmed COVID-19 hospital admissions may increase in this location over the next four weeks. For these locations, the ensemble forecast indicates a median daily probability of 0.75 or greater that more hospital admissions will be reported in the last seven days of the forecast than the median in the last seven days of reported data.

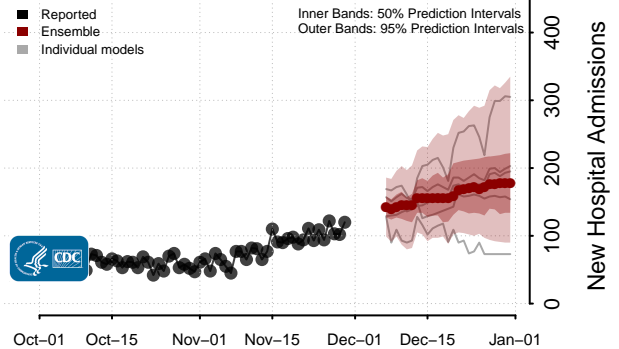
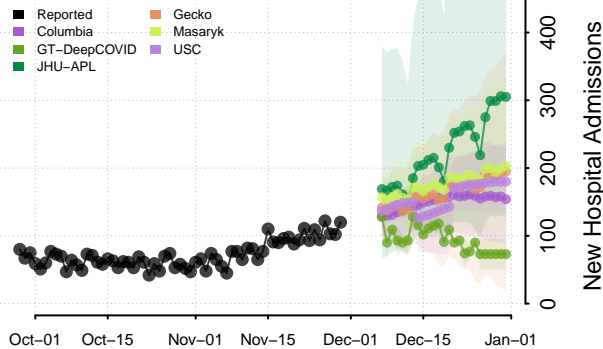
### Maine



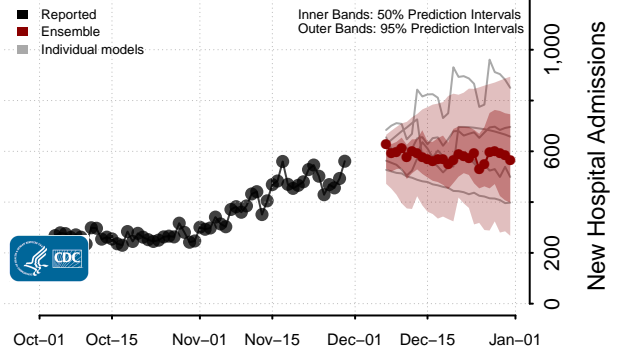
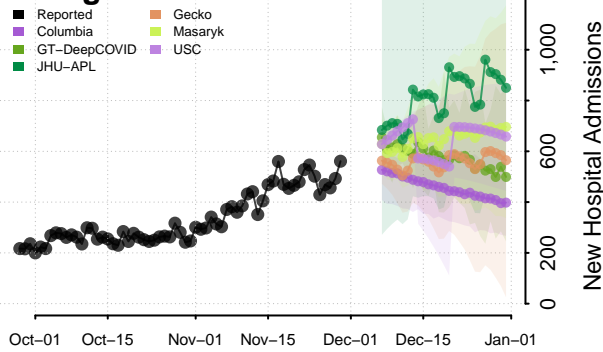
### Maryland\*\*



### Massachusetts\*\*

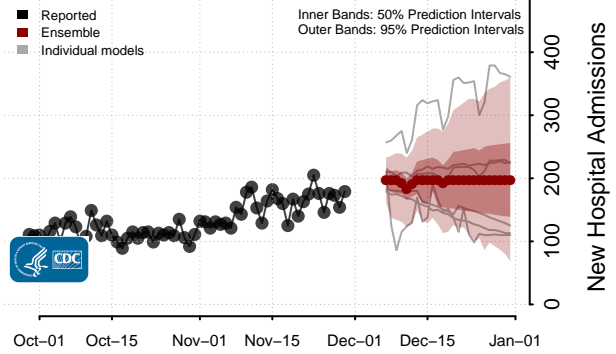
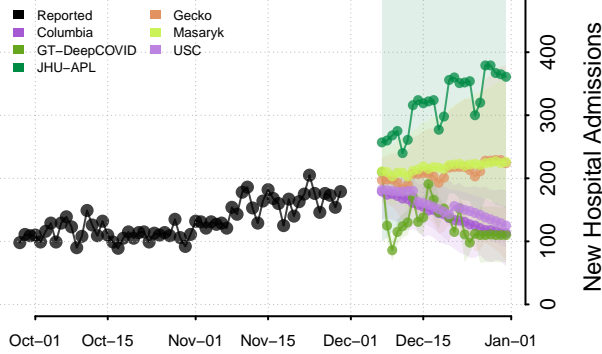


### Michigan

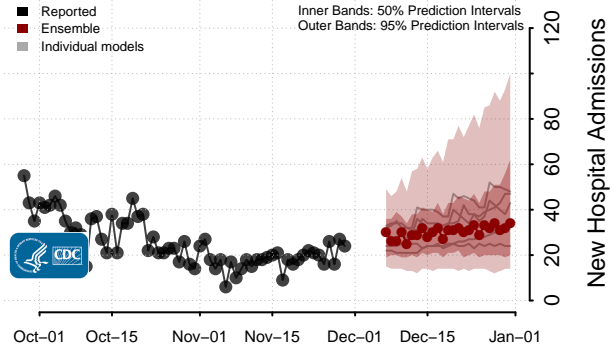
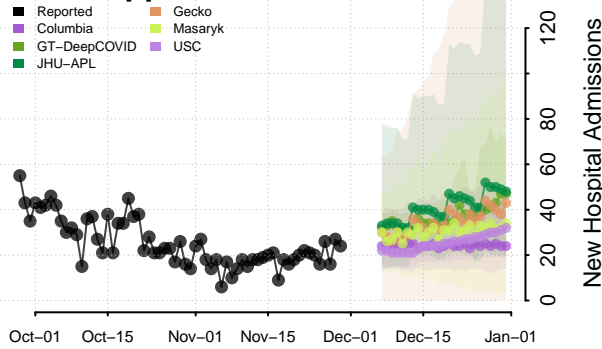


\*\*New daily confirmed COVID-19 hospital admissions may increase in this location over the next four weeks. For these locations, the ensemble forecast indicates a median daily probability of 0.75 or greater that more hospital admissions will be reported in the last seven days of the forecast than the median in the last seven days of reported data.

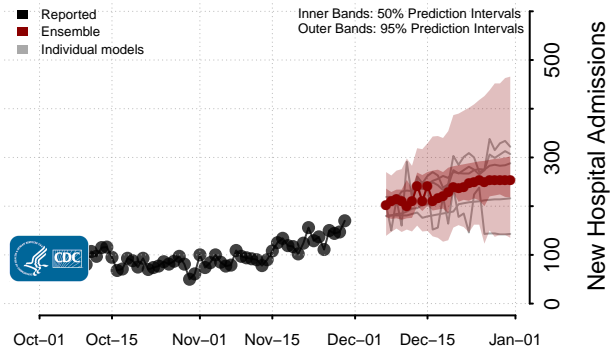
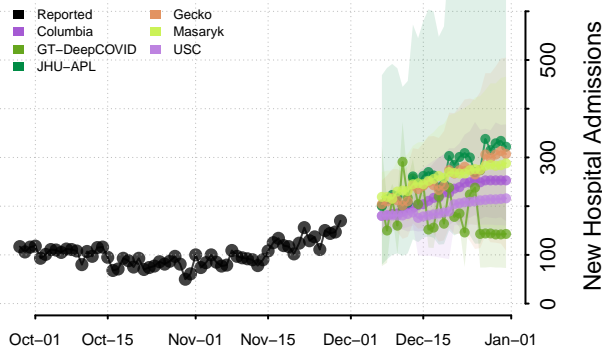
### Minnesota



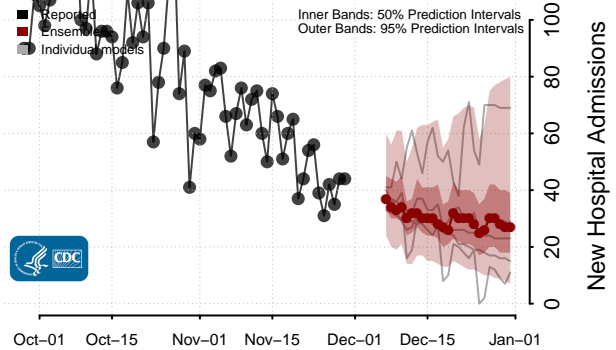
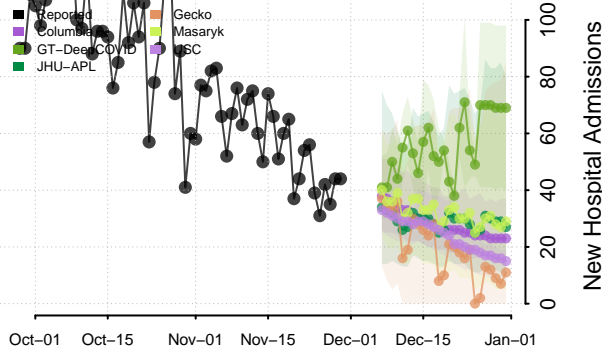
### Mississippi



### Missouri\*\*



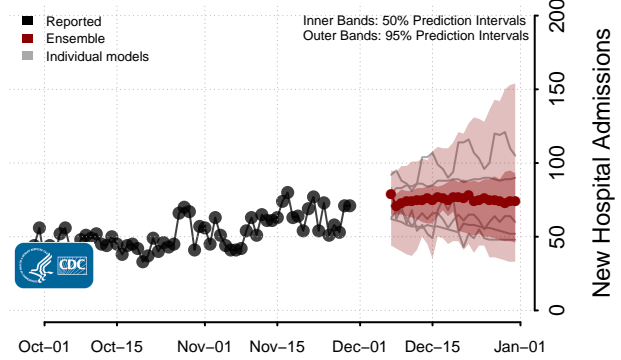
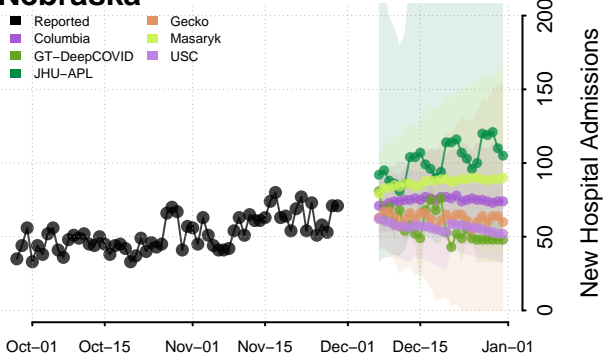
### Montana\*



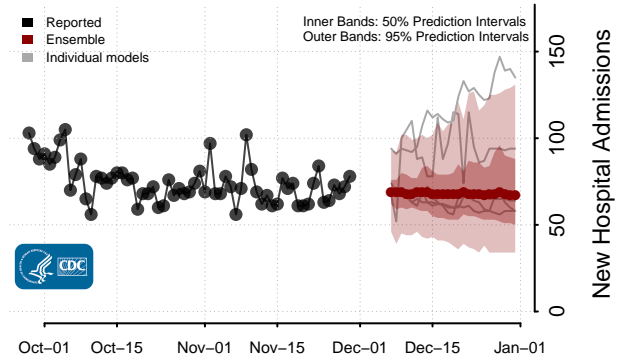
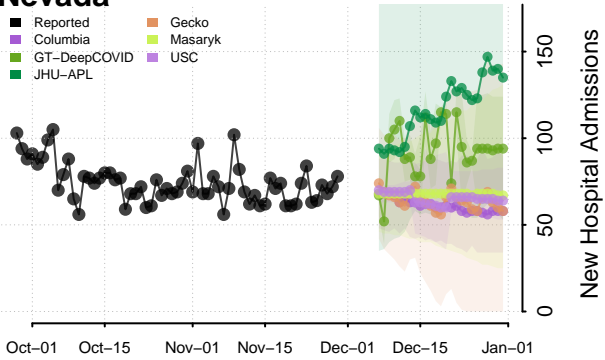
\*New daily confirmed COVID-19 hospital admissions may decrease in this location over the next four weeks. For these locations, the ensemble forecast indicates a median daily probability of 0.75 or greater that fewer hospital admissions will be reported in the last seven days of the forecast than the median in the last seven days of reported data.

\*\*New daily confirmed COVID-19 hospital admissions may increase in this location over the next four weeks. For these locations, the ensemble forecast indicates a median daily probability of 0.75 or greater that more hospital admissions will be reported in the last seven days of the forecast than the median in the last seven days of reported data.

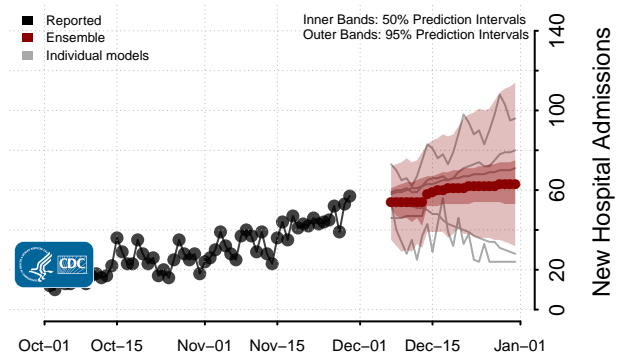
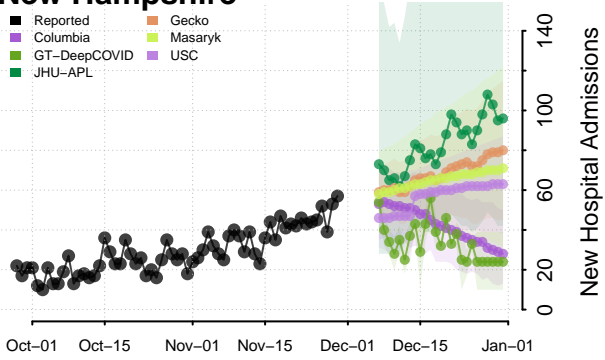
### Nebraska



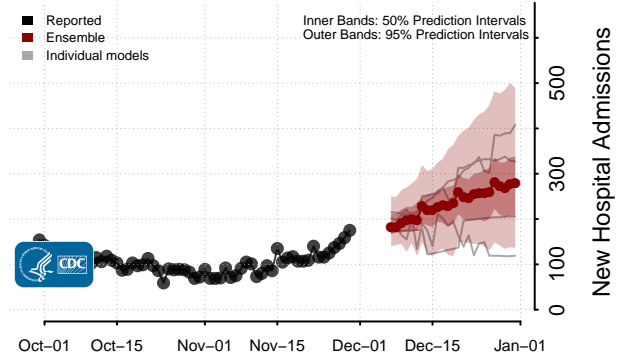
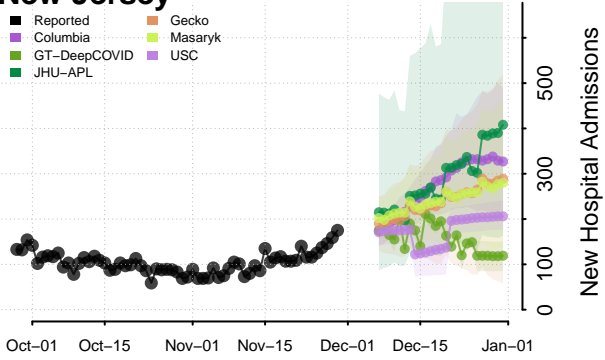
### Nevada



### New Hampshire\*\*



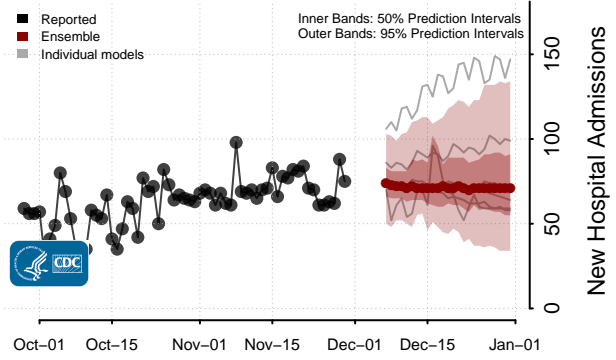
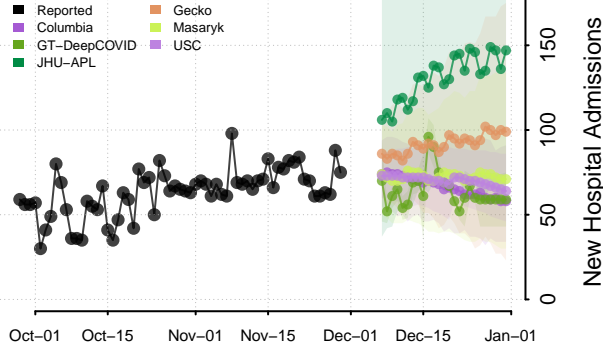
### New Jersey\*\*



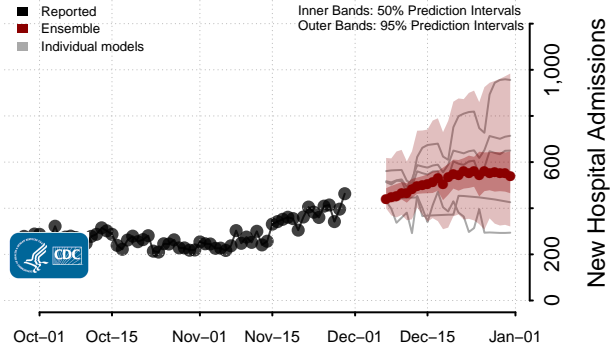
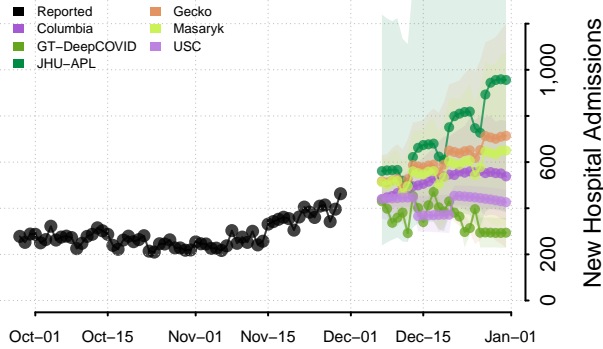
\*\*New daily confirmed COVID-19 hospital admissions may increase in this location over the next four weeks. For these locations, the ensemble forecast indicates a median daily probability of 0.75 or greater that more hospital admissions will be reported in the last seven days of the forecast than the median in the last seven days of reported data.



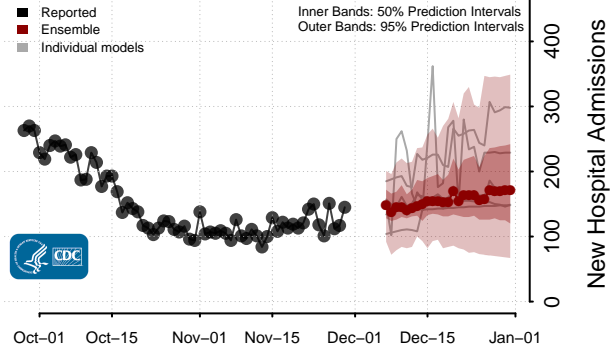
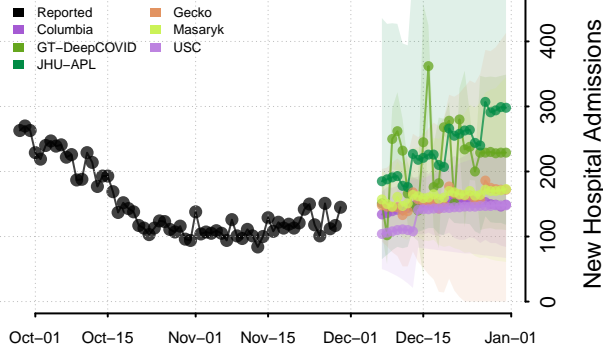
### New Mexico



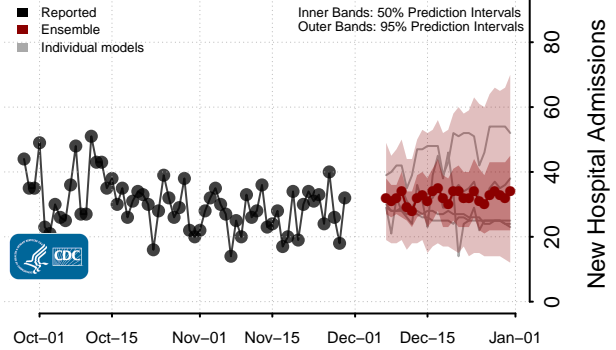
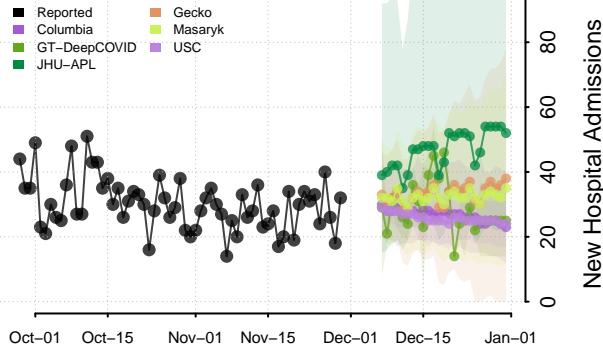
### New York\*\*



### North Carolina\*\*

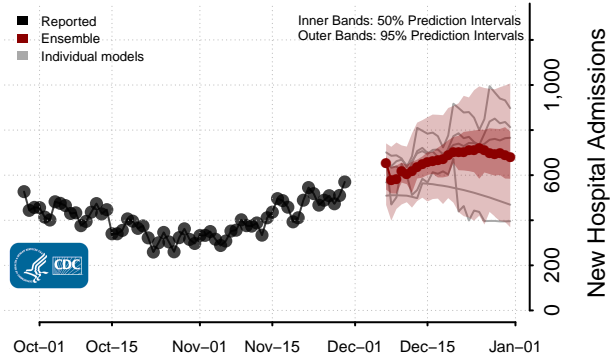
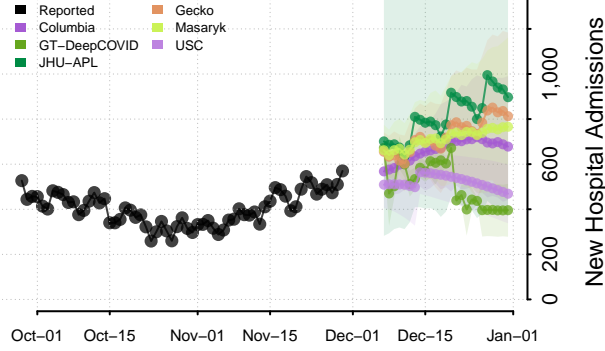


### North Dakota

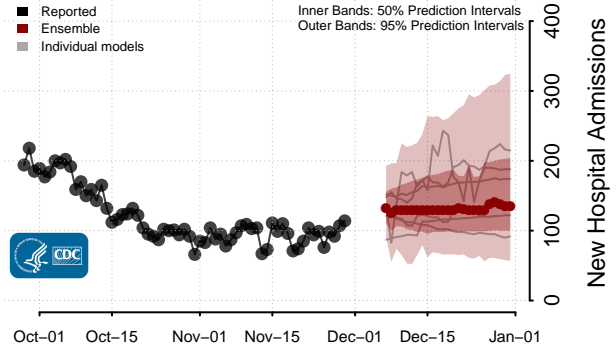
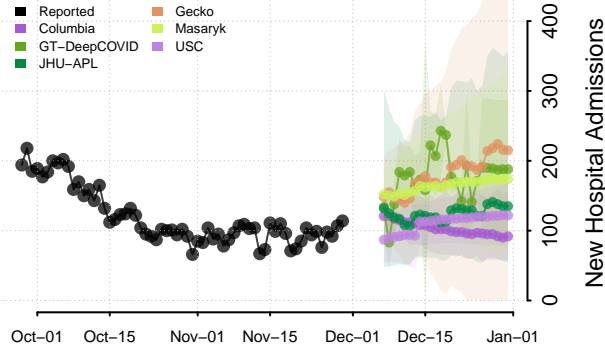


\*\*New daily confirmed COVID-19 hospital admissions may increase in this location over the next four weeks. For these locations, the ensemble forecast indicates a median daily probability of 0.75 or greater that more hospital admissions will be reported in the last seven days of the forecast than the median in the last seven days of reported data.

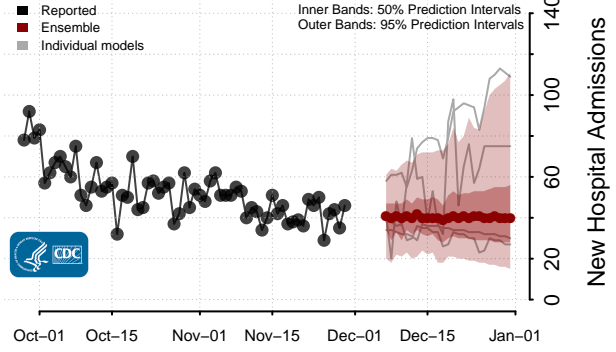
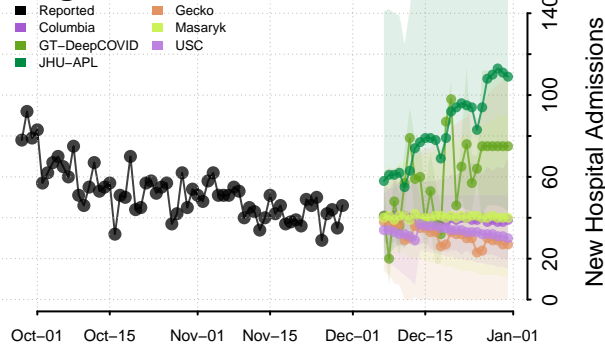
### Ohio\*\*



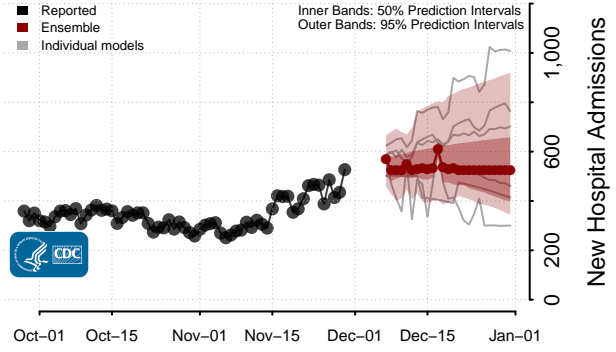
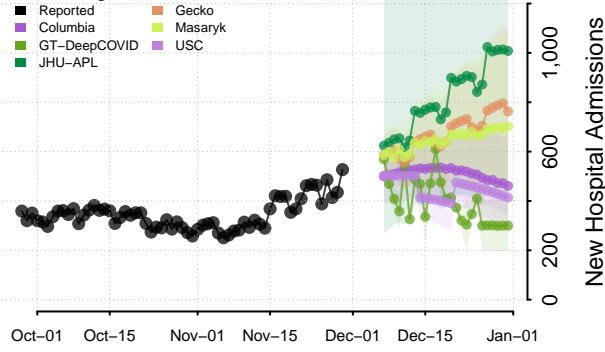
### Oklahoma\*\*



### Oregon

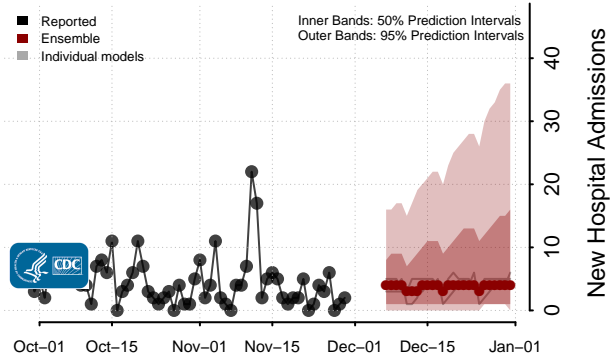
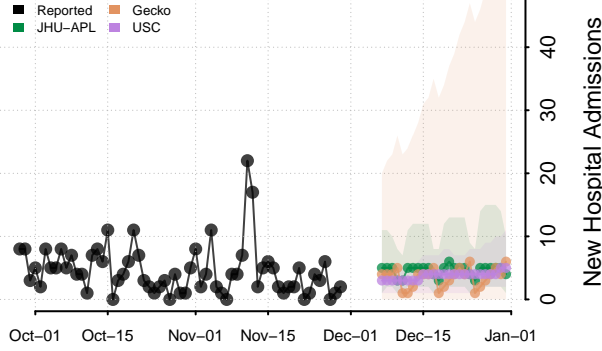


### Pennsylvania

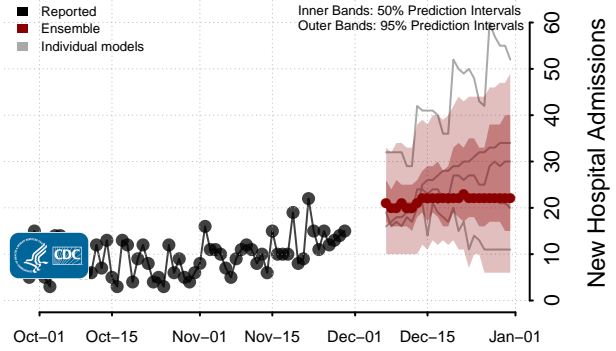
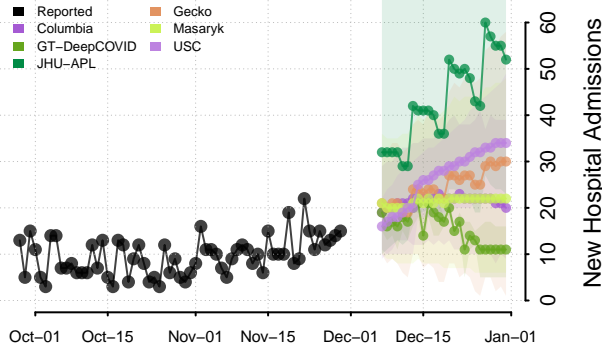


\*\*New daily confirmed COVID-19 hospital admissions may increase in this location over the next four weeks. For these locations, the ensemble forecast indicates a median daily probability of 0.75 or greater that more hospital admissions will be reported in the last seven days of the forecast than the median in the last seven days of reported data.

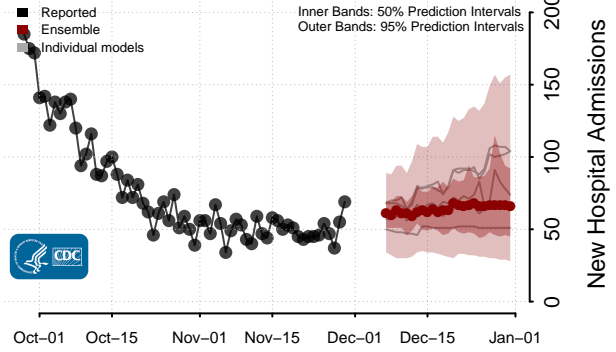
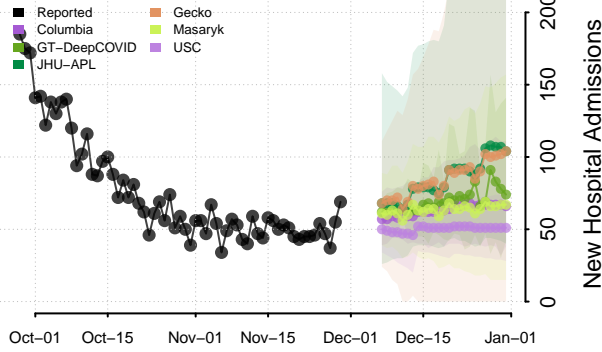
### Puerto Rico



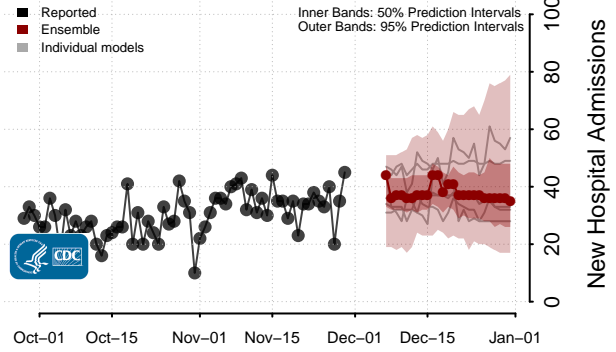
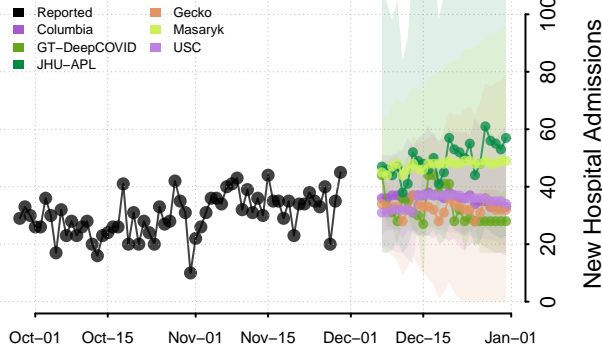
### Rhode Island



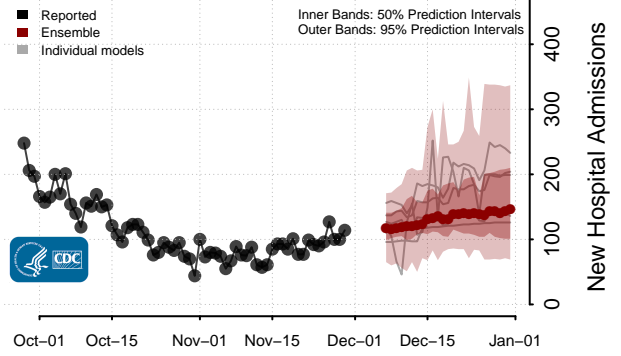
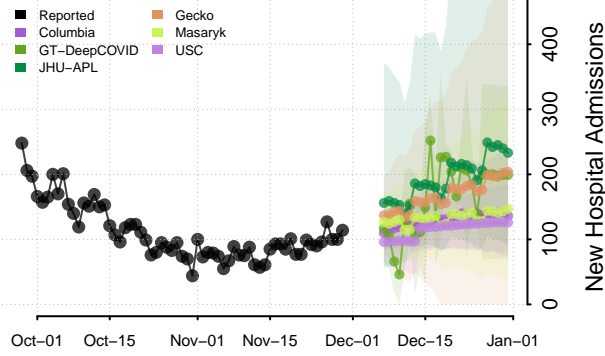
### South Carolina



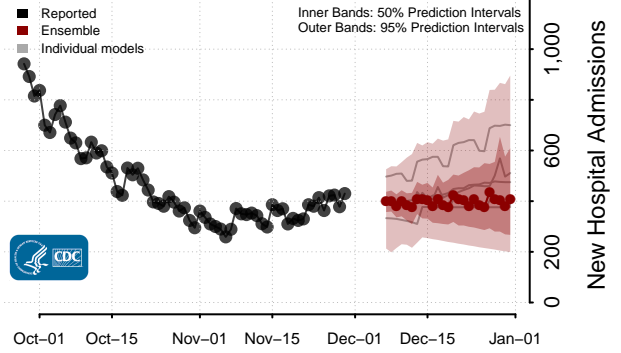
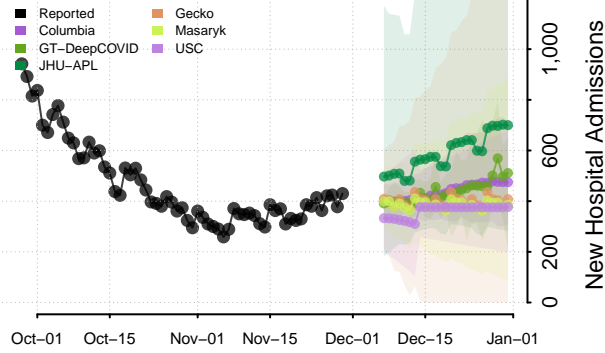
### South Dakota



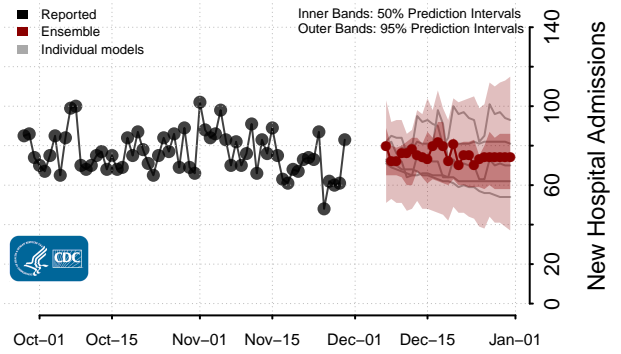
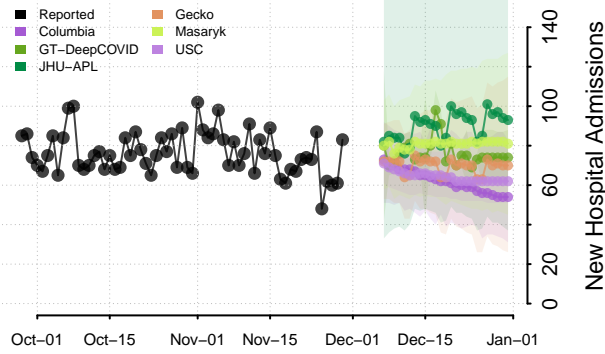
### Tennessee\*\*



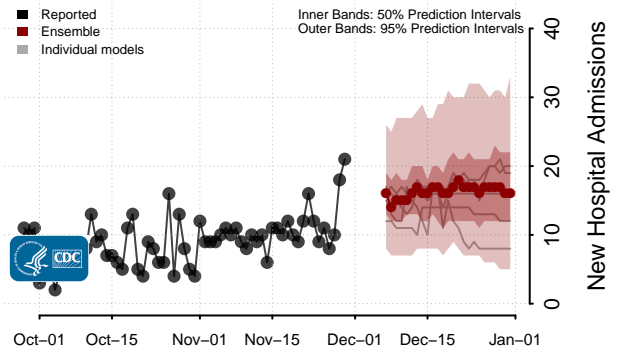
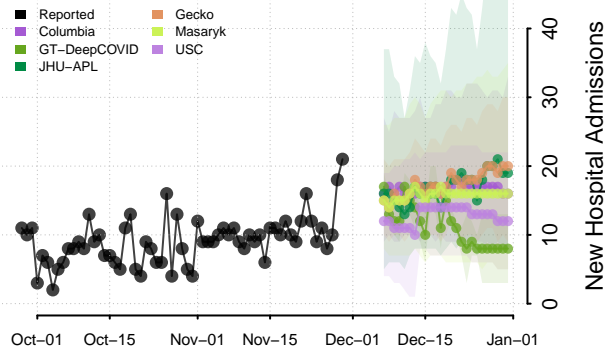
### Texas



### Utah

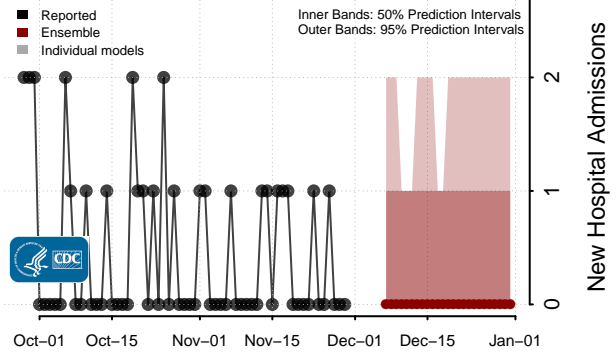
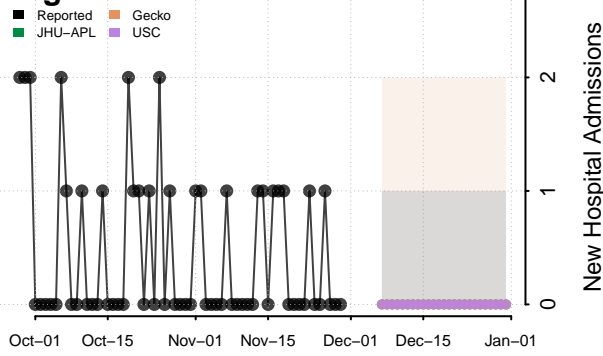


### Vermont

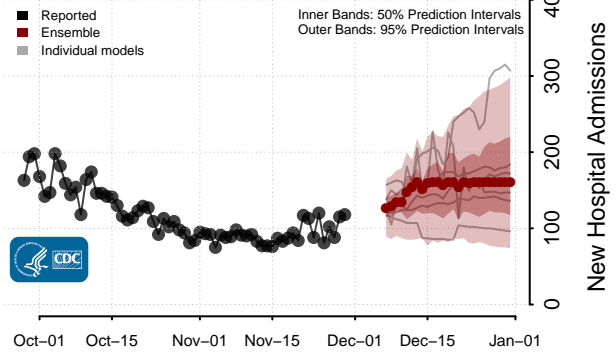
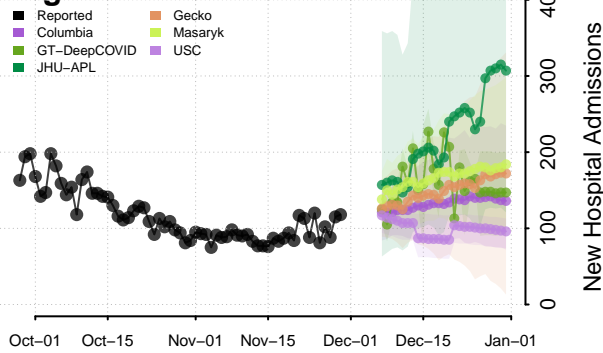


\*\*New daily confirmed COVID-19 hospital admissions may increase in this location over the next four weeks. For these locations, the ensemble forecast indicates a median daily probability of 0.75 or greater that more hospital admissions will be reported in the last seven days of the forecast than the median in the last seven days of reported data.

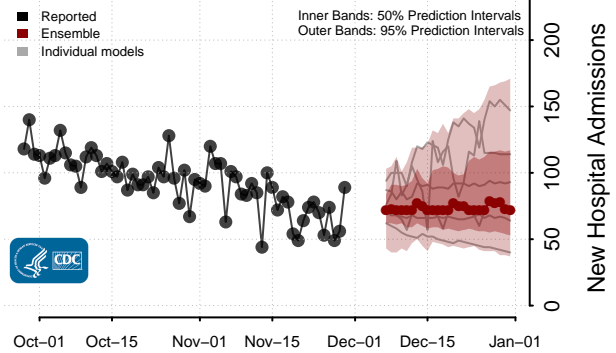
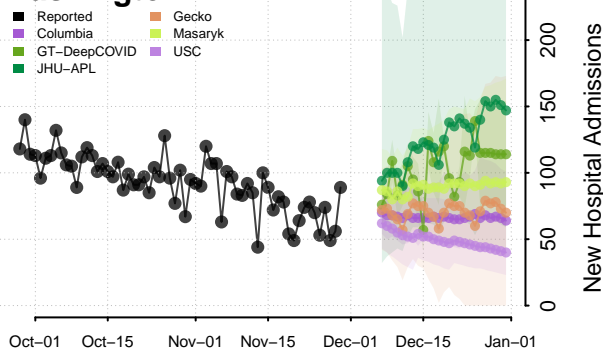
### Virgin Islands



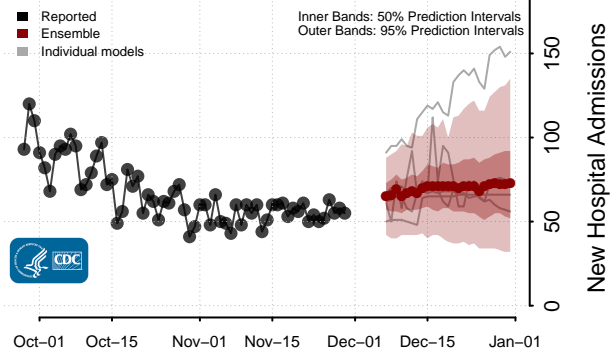
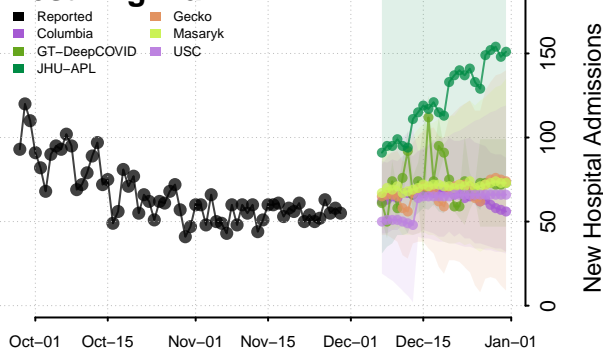
### Virginia\*\*



### Washington

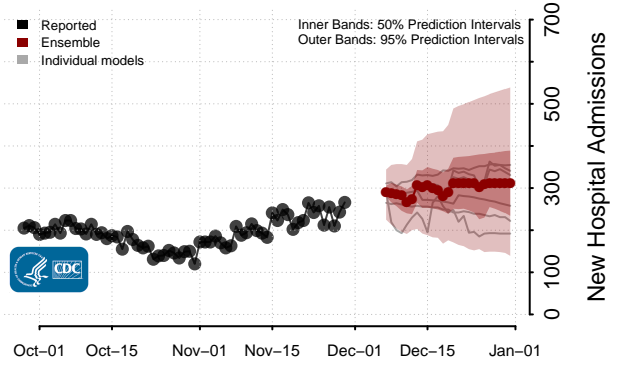
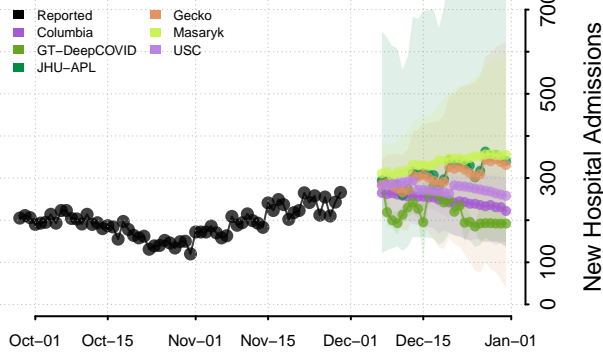


### West Virginia

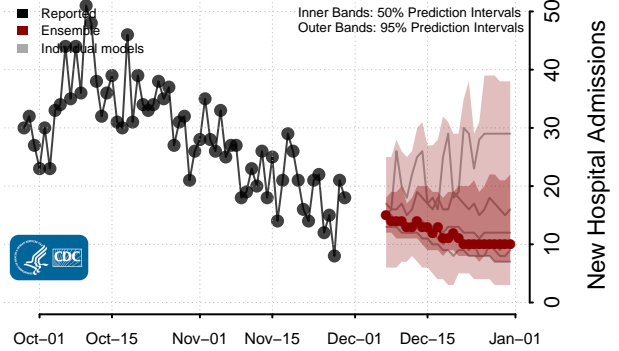
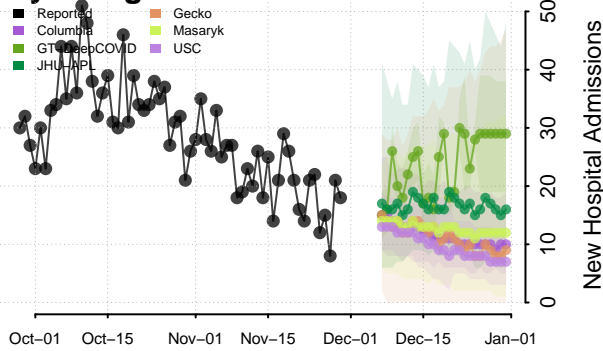


\*\*New daily confirmed COVID-19 hospital admissions may increase in this location over the next four weeks. For these locations, the ensemble forecast indicates a median daily probability of 0.75 or greater that more hospital admissions will be reported in the last seven days of the forecast than the median in the last seven days of reported data.

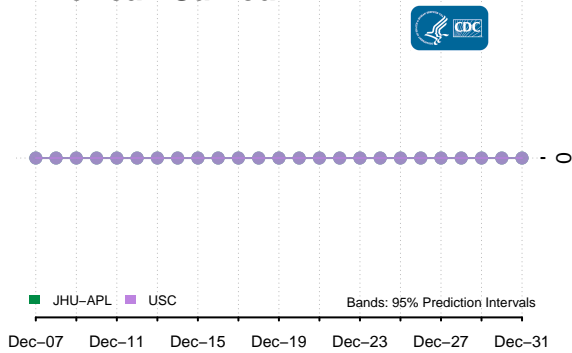
### Wisconsin



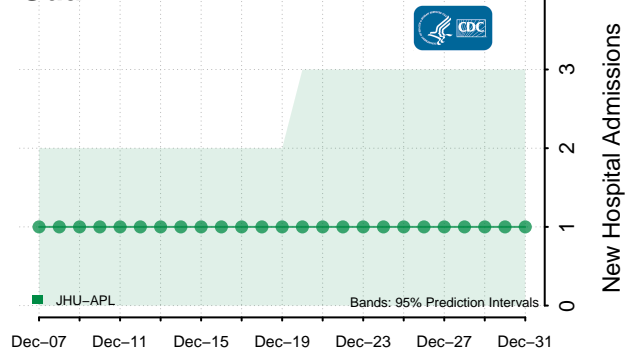
### Wyoming



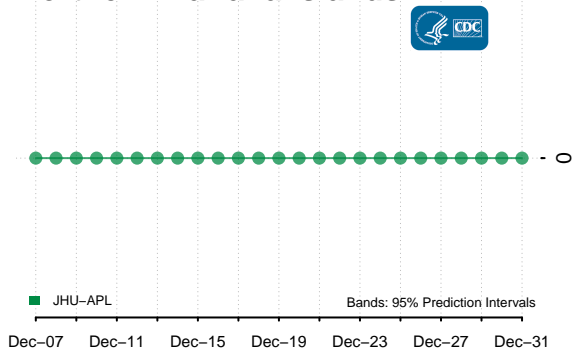
### American Samoa\*\*\*



### Guam\*\*\*



### Northern Mariana Islands\*\*\*



\*\*\*The daily number of new COVID-19 hospital admissions are not reported for this jurisdiction