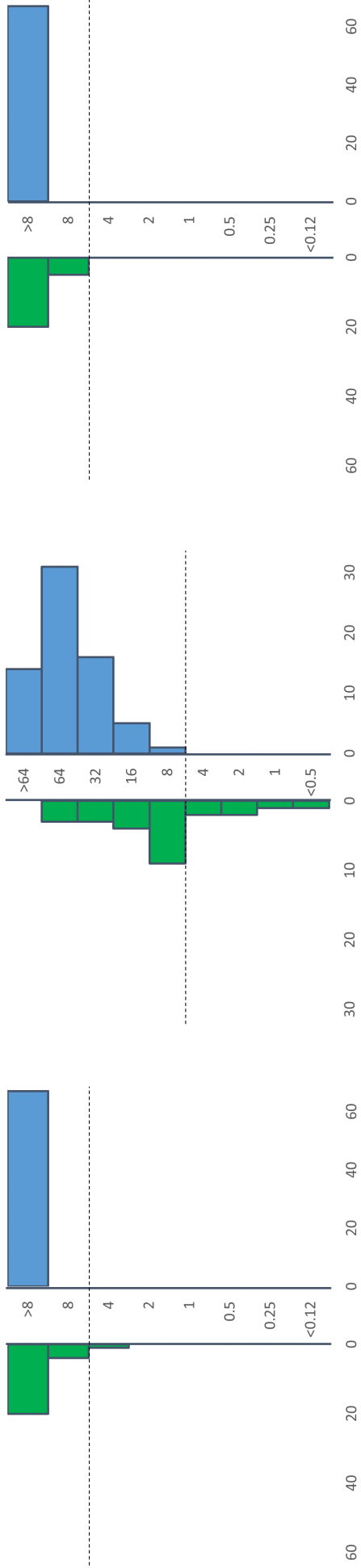


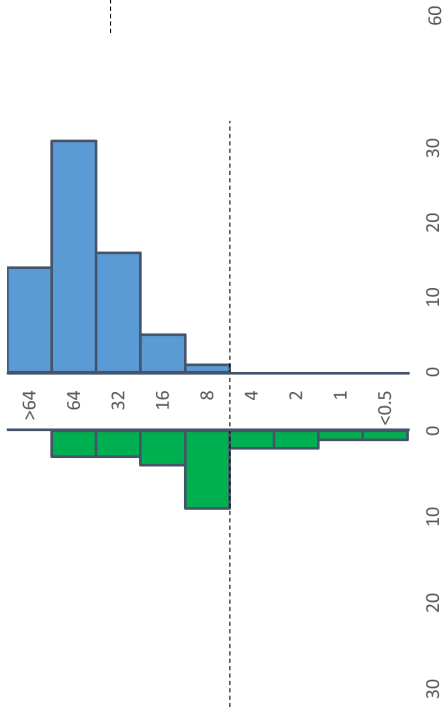
Acquired OXA
Intrinsic OXA

CLSI resistance breakpoint

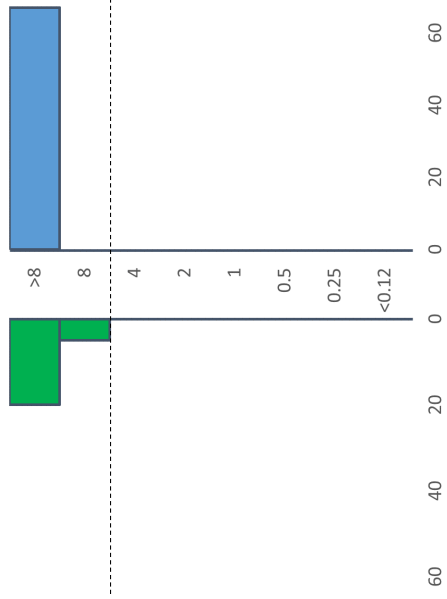
Doripenem



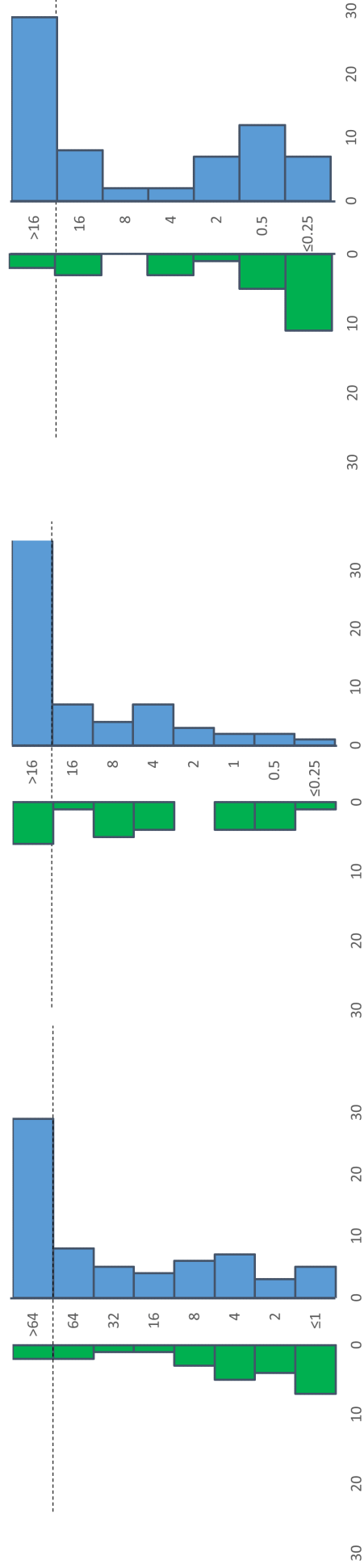
Imipenem



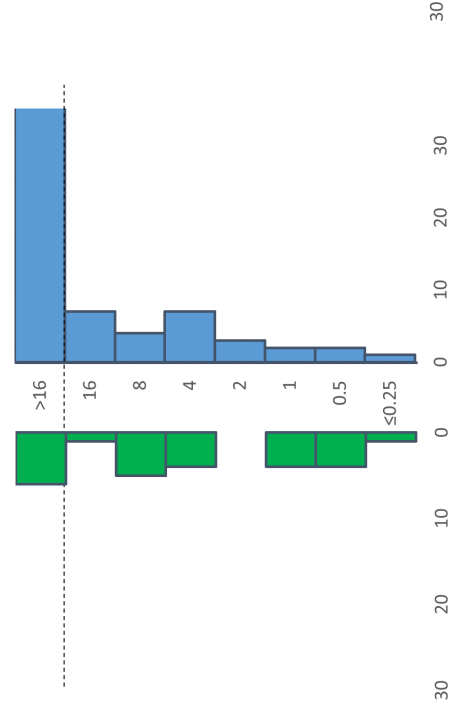
Meropenem



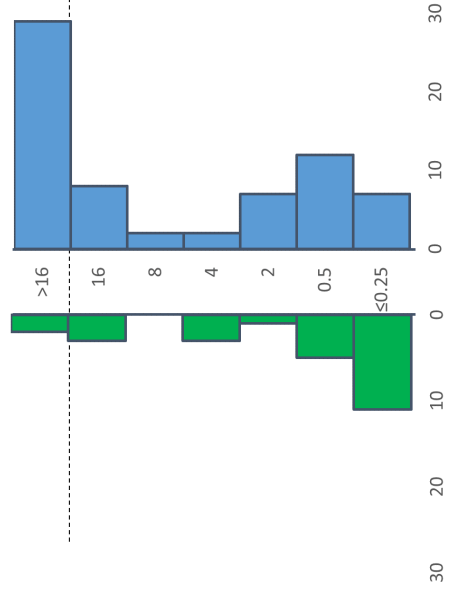
Amikacin



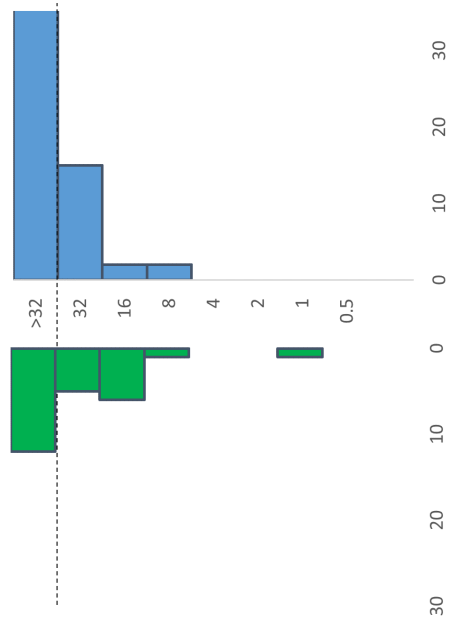
Gentamicin



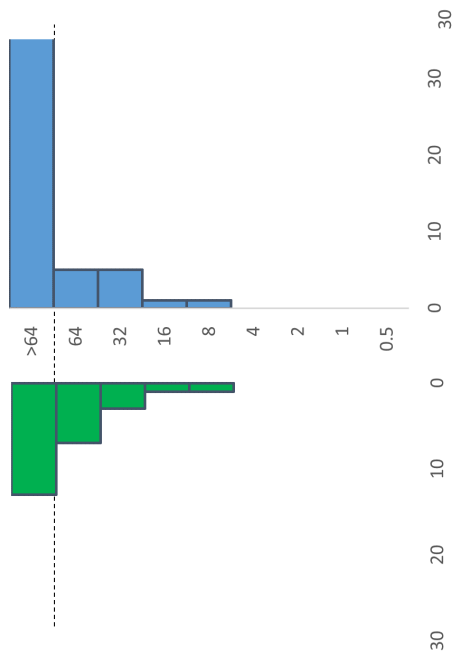
Tobramycin



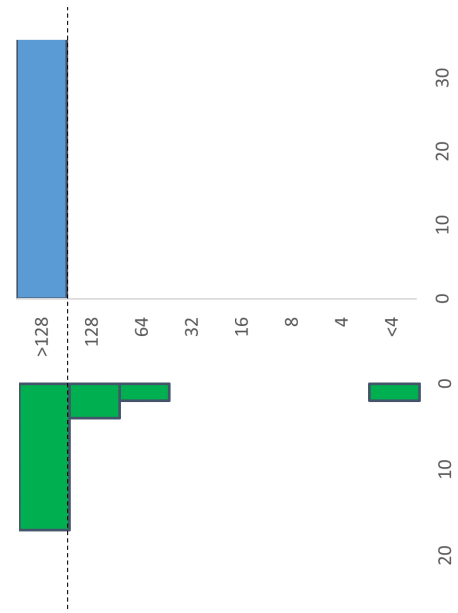
Cefepime



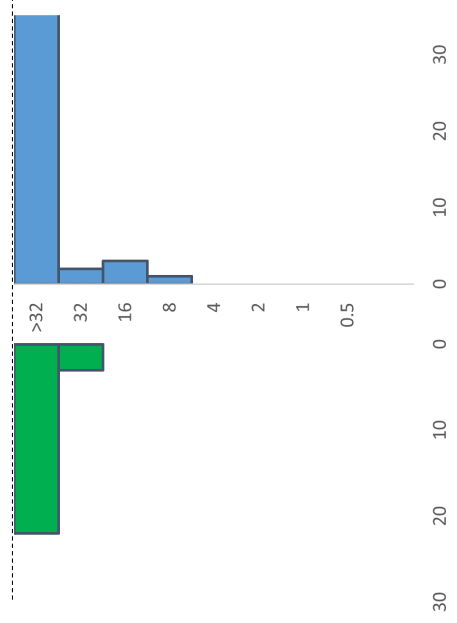
Cefotaxime



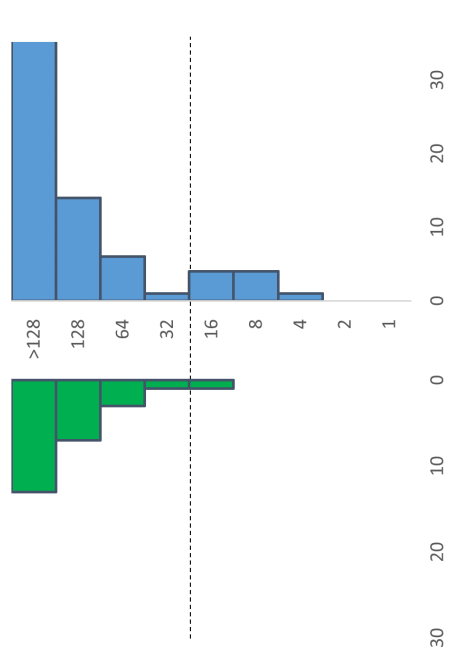
Piperacillin-tazobactam

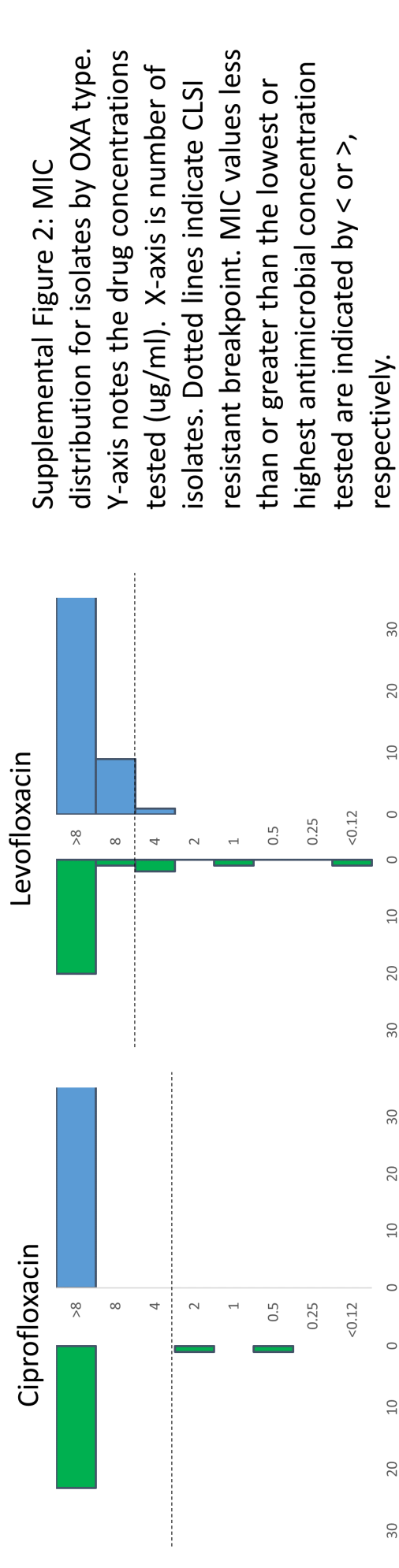
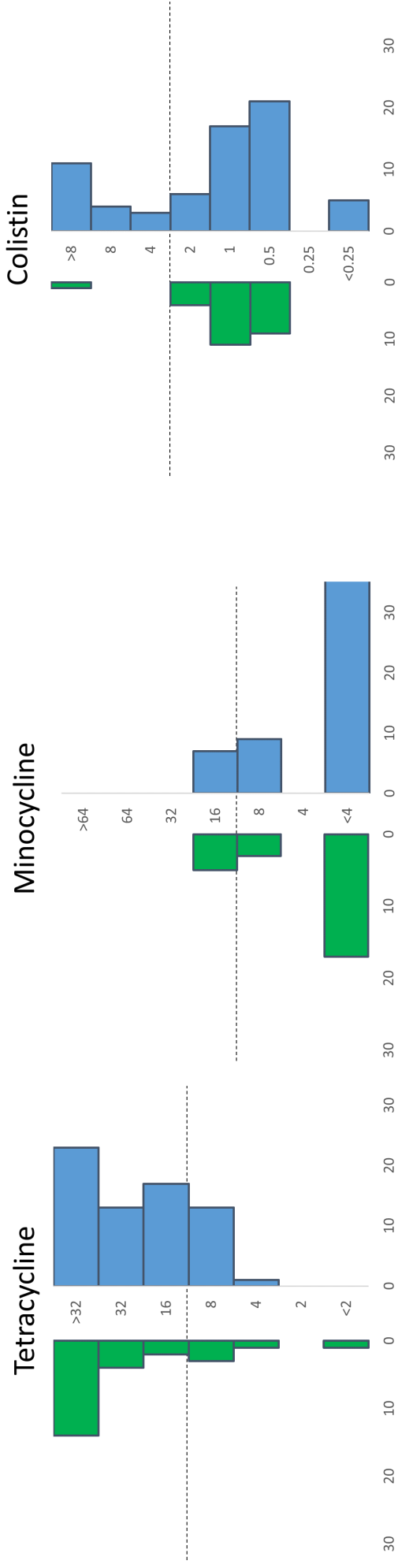


Ceftriaxone



Ceftazidime





Supplemental Figure 2: MIC distribution for isolates by OXA type. Y-axis notes the drug concentrations tested (ug/ml). X-axis is number of isolates. Dotted lines indicate CLSI resistant breakpoint. MIC values less than or greater than the lowest or highest antimicrobial concentration tested are indicated by < or >, respectively.