

**ASD Prevalence and Cases by State:
Supplemental Tables and Figures**

Table 1: Summary of mortality studies included in the meta-analysis of standardized mortality rates by sex among persons with Autism Spectrum Disorder (ASD).

Study Reference	Study Location, years	Mortality (males)	Mortality (females)
Hirvikoski et al. 2016	Sweden, linked national patient registry and death registry, ASD cases 1987-2009	Observed = 410	Observed = 296
		Expected = 129	Expected = 117
Mouridsen et al. 2008	Danish, clinical cohort compared to general population, 1960-1993	Observed = 8	Observed = 8
		Expected = 11.5	Expected = 2.0
Pickett et al. 2006 ¹	CA Dev Disabilities System 1983-1997	Observed = 143	Observed = 59
		Expected = 84.1	Expected = 10.7
	CA Dev Disabilities System 1998-2002	Observed = 62	Observed = 16
		Expected = 27	Expected = 3.1
Gillberg et al. 2010	Swedish person diagnosis with ASD and born 1962-1984, followed until 18+ years	Observed = 3	Observed = 6
		Expected = 1.33	Expected = 0.29
Pooled Estimate		SMR ² = 2.14	SMR = 5.17
		95% CI _B ³ (1.21, 3.68)	95% CI _B (1.58, 16.67)

¹ The expected values were calculated using the published SMRs and observed values

² SMR = standardized mortality ratio

³ CI_B = Bayesian credible interval

Table 2: The male versus female prevalence ratio (PR) and prevalence difference (PD), and associated 95% simulation interval by state and the US.

State	PR	PR 95% SI	PD	PD 95% SI
Alabama	4.82	2.71, 8.33	2.77	1.83, 3.80
Alaska	4.01	2.41, 6.57	2.48	1.60, 3.47
Arizona	4.69	2.79, 7.80	2.91	1.97, 3.97
Arkansas	5.08	2.84, 8.78	2.69	1.78, 3.71
California	4.34	2.68, 6.83	2.91	1.96, 3.96
Colorado	4.07	2.59, 6.33	2.69	1.84, 3.66
Connecticut	4.99	3.06, 8.04	3.16	2.16, 4.35
Delaware	4.79	2.76, 8.08	2.96	1.95, 4.09
District of Columbia	4.39	2.62, 7.00	2.68	1.79, 3.68
Florida	4.20	2.48, 7.09	2.47	1.59, 3.46
Georgia	4.50	2.67, 7.32	2.85	1.91, 3.88
Hawaii	4.09	2.47, 6.57	2.49	1.61, 3.47
Idaho	4.35	2.67, 6.98	2.67	1.80, 3.66
Illinois	4.39	2.66, 6.99	2.89	1.94, 3.96
Indiana	4.28	2.55, 6.96	2.74	1.83, 3.77
Iowa	4.65	2.85, 7.39	2.89	2.00, 3.85
Kansas	4.52	2.73, 7.26	2.74	1.86, 3.75
Kentucky	4.94	2.83, 8.40	2.79	1.89, 3.78
Louisiana	4.40	2.51, 7.36	2.45	1.56, 3.43
Maine	4.51	2.71, 7.29	2.87	1.93, 3.90
Maryland	4.14	2.49, 6.83	2.61	1.74, 3.55
Massachusetts	4.49	2.73, 7.15	3.08	2.06, 4.26
Michigan	4.39	2.55, 7.32	2.69	1.76, 3.69
Minnesota	4.26	2.70, 6.61	2.87	2.00, 3.78
Mississippi	4.84	2.68, 8.47	2.71	1.74, 3.80
Missouri	4.47	2.70, 7.30	2.66	1.79, 3.65
Montana	4.12	2.36, 7.02	2.49	1.58, 3.49

Continued on next page

Table 2: The male versus female prevalence ratio (PR) and prevalence difference (PD), and associated 95% simulation interval by state and the US.

State	PR	PR 95% SI	PD	PD 95% SI
Nebraska	4.67	2.79, 7.54	2.84	1.90, 3.89
Nevada	4.46	2.69, 7.26	2.82	1.90, 3.86
New Hampshire	4.22	2.63, 6.69	2.70	1.85, 3.61
New Jersey	4.53	2.79, 7.26	2.93	2.04, 3.95
New Mexico	4.39	2.45, 7.59	2.46	1.53, 3.50
New York	4.15	2.57, 6.49	2.75	1.84, 3.72
North Carolina	4.16	2.50, 6.84	2.44	1.58, 3.42
North Dakota	4.30	2.48, 7.06	2.43	1.55, 3.45
Ohio	4.39	2.58, 7.29	2.62	1.71, 3.65
Oklahoma	4.60	2.70, 7.58	2.69	1.81, 3.68
Oregon	4.85	2.91, 7.81	2.96	2.02, 4.04
Pennsylvania	4.70	2.82, 7.73	3.00	1.99, 4.15
Rhode Island	4.53	2.82, 7.05	2.86	2.01, 3.79
South Carolina	4.07	2.34, 6.94	2.38	1.45, 3.42
South Dakota	3.94	2.29, 6.48	2.32	1.40, 3.39
Tennessee	4.74	2.80, 7.90	2.70	1.81, 3.68
Texas	4.24	2.57, 6.74	2.66	1.75, 3.70
Utah	4.04	2.58, 6.19	2.70	1.88, 3.60
Vermont	4.31	2.59, 6.96	2.60	1.74, 3.54
Virginia	4.23	2.49, 6.85	2.94	1.96, 4.00
Washington	4.65	2.69, 7.64	2.68	1.80, 3.70
West Virginia	4.30	2.39, 7.49	2.50	1.56, 3.54
Wisconsin	4.63	2.77, 7.42	2.83	1.94, 3.80
Wyoming	4.06	2.37, 6.84	2.61	1.68, 3.64
Total	4.29	3.19, 6.08	2.75	2.23, 3.26

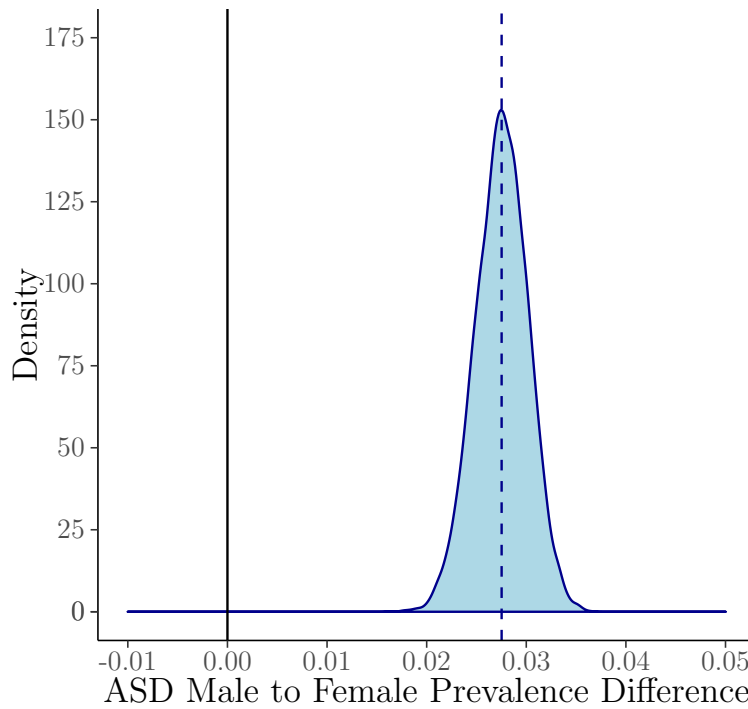
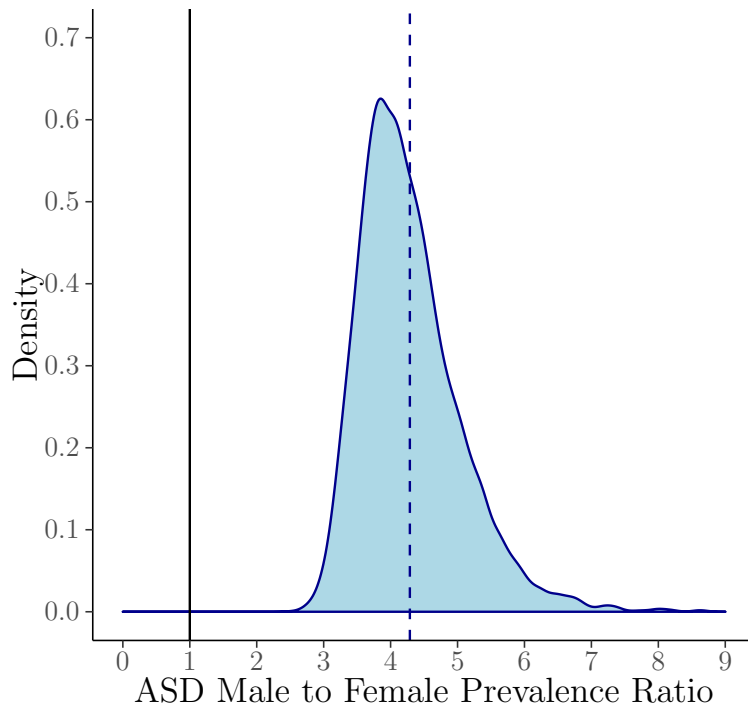


Figure 1: The US national ASD estimated prevalence ratio and prevalence difference for males versus females. The PR = 4.29 (95% SI: 3.19, 6.08) and PD = 0.0275 (95% SI: 0.0223, 0.0326).

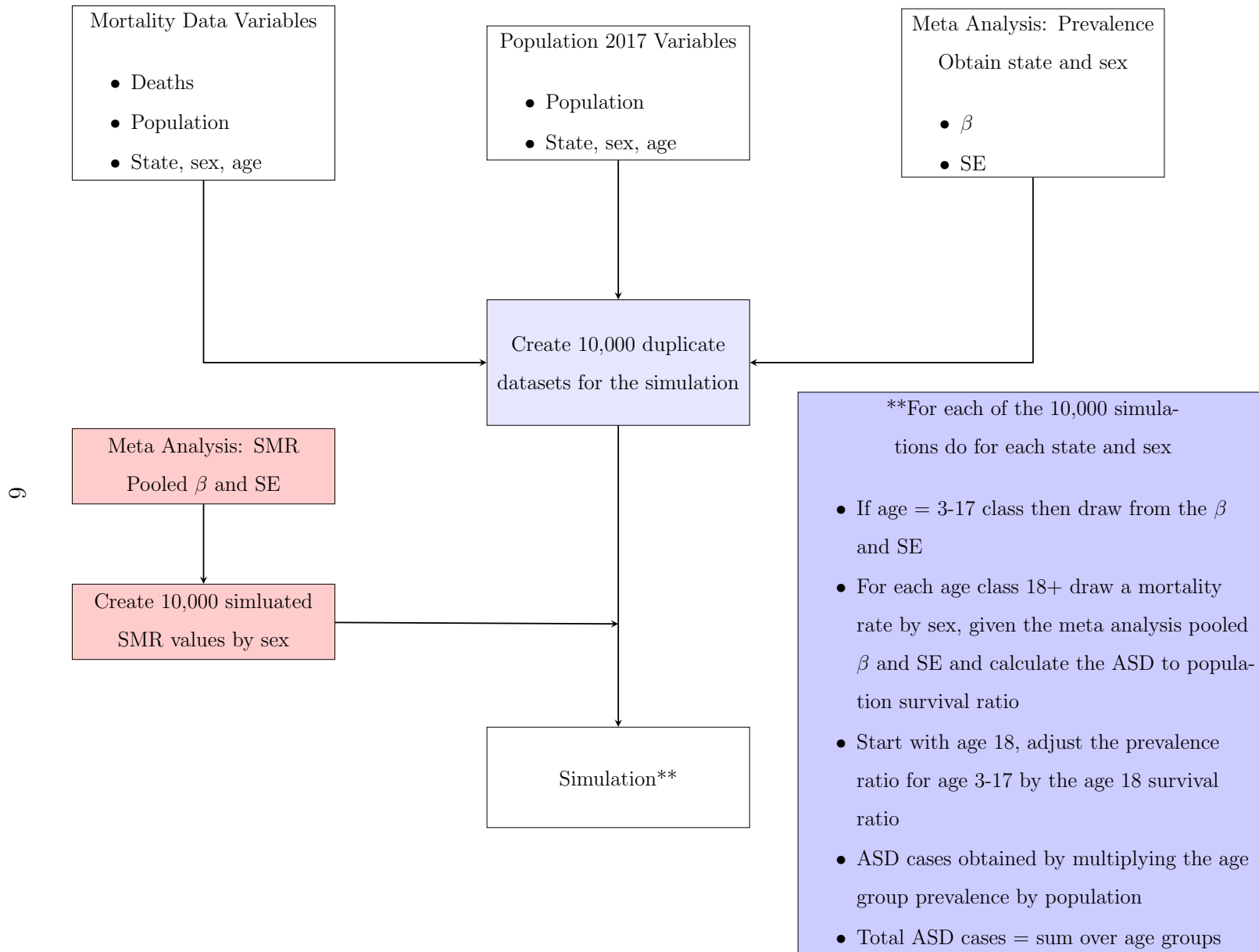


Figure 2: Illustration of the ASD simulation process.