

**Supplementary Figures & Tables:**

**sTable 1. Surrogates of right ventricular function and hemodynamic stability**

	<b>RVAD/ECMO</b>	<b>IMV-alone</b>
<b>Echocardiogram</b>	14 (77.8)	7 (33.3)
Tricuspid regurgitation		
None	4 (28.6)	1 (14.3)
Trace	6 (42.9)	3 (42.3)
Mild/moderate	2 (14.3)	0 (0.0)
Unknown/not documented	2 (14.3)	3 (42.3)
Right ventricular function		
Normal	11 (78.6)	5 (71.4)
Hyperdynamic	1 (7.1)	0 (0.0)
Mild systolic dysfunction	1 (7.1)	2 (28.6)
Unknown/not documented	1 (7.1)	0 (0.0)
Right ventricular size		
Normal	9 (64.3)	5 (71.4)
Enlarged	0 (0.0)	1 (14.3)
Unknown	5 (35.7)	1 (14.3)
TAPSE (mm)	2.5 (2.0 – 2.7) (N=2)	18.5 (16.8 – 19.3) (N=4)
<b>Hemodynamics</b>		
Heart rate (bpm)	97 (80 – 111)	88 (82 – 107)
Systolic blood pressure (mmHg)	116 (106 – 130)	113 (100 – 119)
Diastolic blood pressure (mmHg)	61 (53 – 65)	57 (53 – 66)
Mean arterial pressure (mmHg)	78 (74 – 85)	76 (69 – 85)
<b>Vasopressor Requirements</b>		
Norepinephrine ( $\mu\text{g}/\text{kg}/\text{min}$ )	0 (0 – 0.07)	0.03 (0 – 0.05)
Epinephrine ( $\mu\text{g}/\text{kg}/\text{min}$ )	0 (0)	0 (0)
Vasopressin (Units/kg/min)	0 (0)	0 (0)
<i>Vasoactive inotrope score</i>	0 (0 – 12)	3 (0 – 5)

*Legend:* RVAD/ECMO, right ventricular assist device/extracorporeal membrane oxygenation; IMV, invasive mechanical ventilation; TAPSE, tricuspid annular plane systolic excursion

**sTable 2. Cox proportional hazard model including covariates**

	<b>Unadjusted</b>	<b>Model 1</b>	<b>Model 2</b>	<b>Model 3</b>	<b>Model 4</b>
RVAD/ECMO	0.17* (0.037, 0.78)	0.13* (0.026, 0.61)	0.14* (0.027, 0.68)	0.17* (0.028, 0.98)	0.17* (0.030, 0.91)
Age		0.96 (0.93, 1.01)			0.96 (0.91, 1.00)
Tocilizumab			1.66 (0.50, 5.54)		1.19 (0.33, 4.23)
Convalescent Plasma				1.05 (0.17, 6.29)	0.42 (0.065, 2.74)

*Legend:* Above values represented as hazard ratio (95% confidence interval). \*p < 0.05.

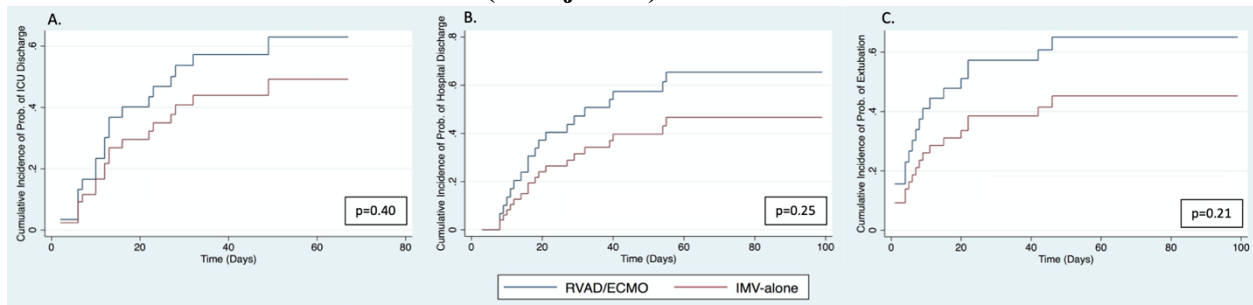
RVAD/ECMO, right ventricular assist device/extracorporeal membrane oxygenation

**sTable 3. Competing-risk analysis hazard ratios included consideration of covariates**

	<b>Unadjusted</b>	<b>Adjusted</b>
<b>Post-intubation ICU days</b>		
RVAD/ECMO	1.47 (0.60, 3.59)	1.25 (0.43, 3.69)
Age (years)		1.00 (0.96, 1.04)
Tocilizumab		0.51 (0.20, 1.32)
Convalescent Plasma		1.90 (0.65, 5.59)
<b>Post-intubation hospital days</b>		
RVAD/ECMO	1.69 (0.70, 4.09)	1.52 (0.60, 3.86)
Age (years)		0.99 (0.96, 1.03)
Tocilizumab		0.45 (0.18, 1.11)
Convalescent Plasma		1.92 (0.70, 5.27)
<b>Duration mechanical ventilation</b>		
RVAD/ECMO	1.75 (0.74, 4.15)	1.25 (0.50, 3.10)
Age (years)		1.00 (0.97, 1.04)
Tocilizumab		0.59 (0.22, 1.60)
Convalescent Plasma		2.63 (0.96, 7.18)

*Legend:* Values represented as hazard ratio (95% confidence interval). \*p < 0.05. ICU, intensive care unit; RVAD/ECMO, right ventricular assist device/extracorporeal membrane oxygenation

**sFigure 1. Cumulative incidence function for post-intubation ICU and hospitals days and duration of mechanical ventilation (unadjusted)**



*Legend:* ICU, intensive care unit; RVAD/ECMO, right ventricular assist device/extracorporeal membrane oxygenation; IMV, invasive mechanical ventilation