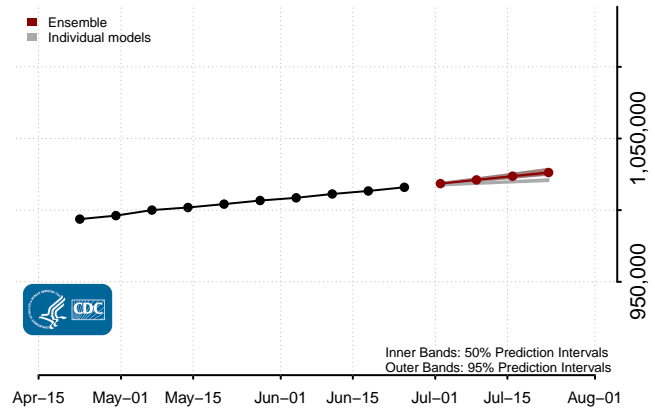
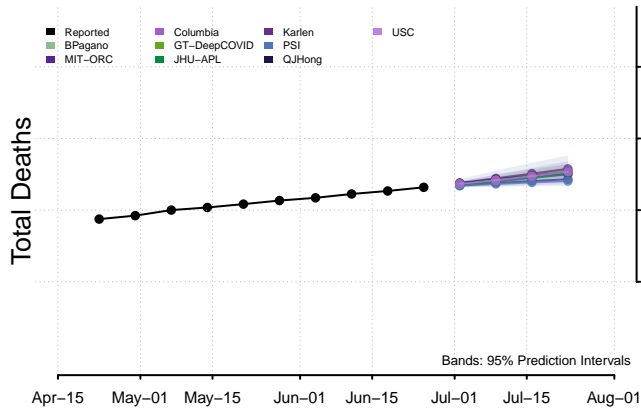
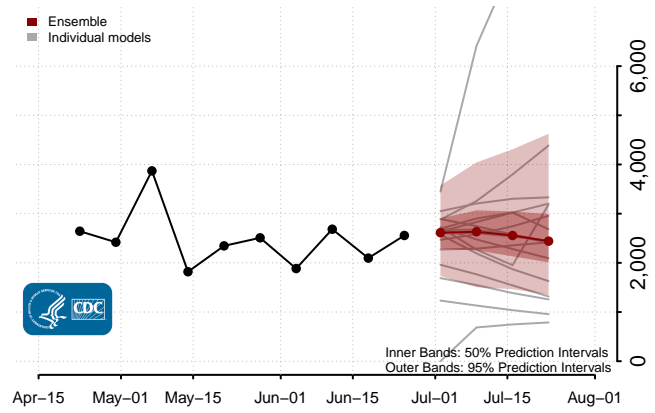
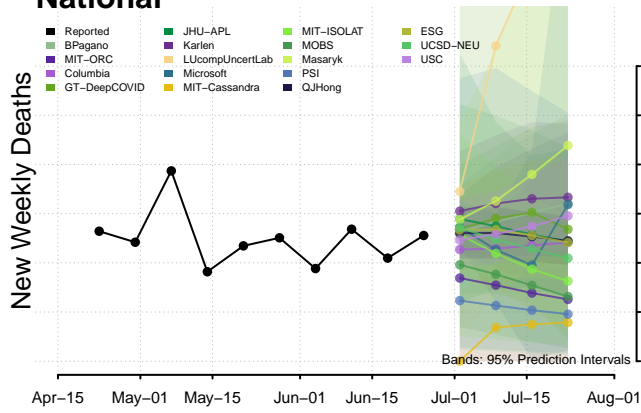
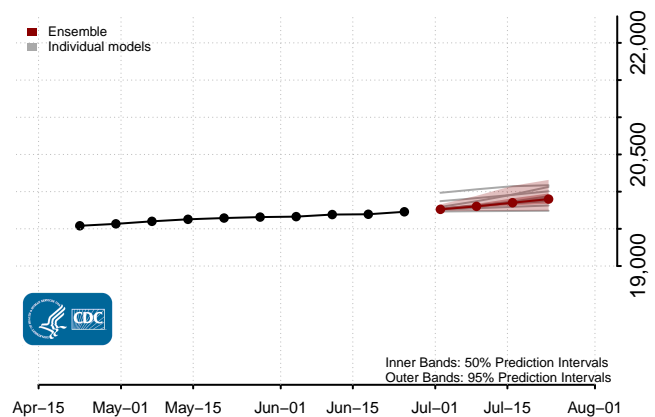
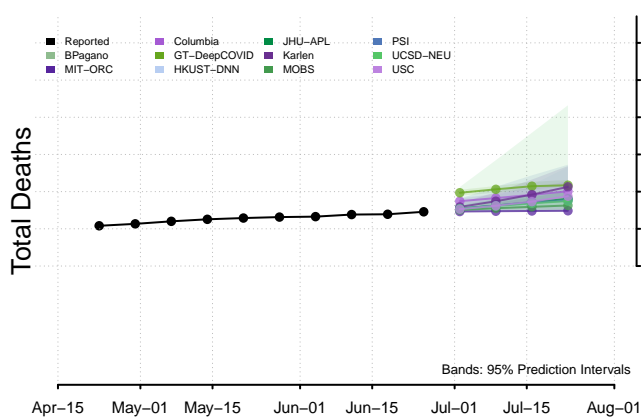
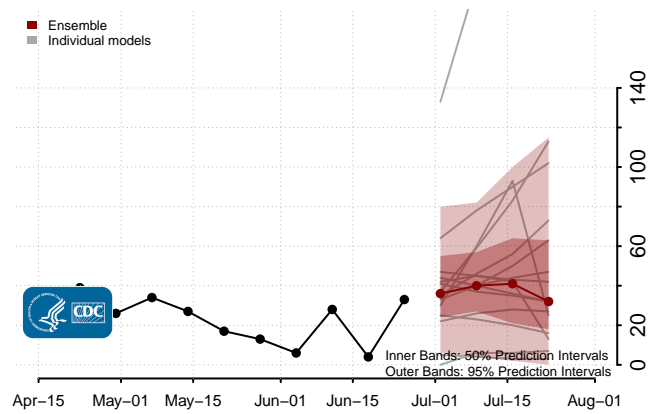
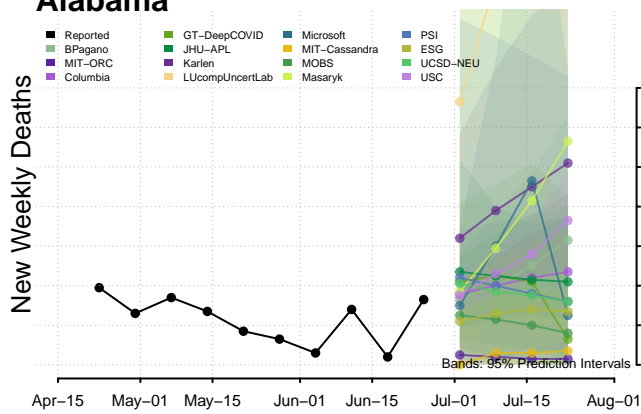


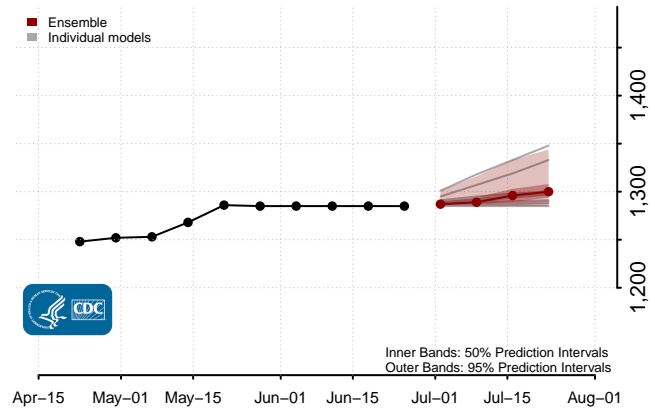
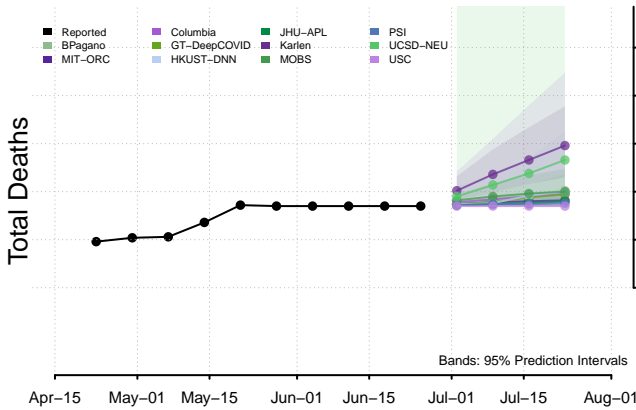
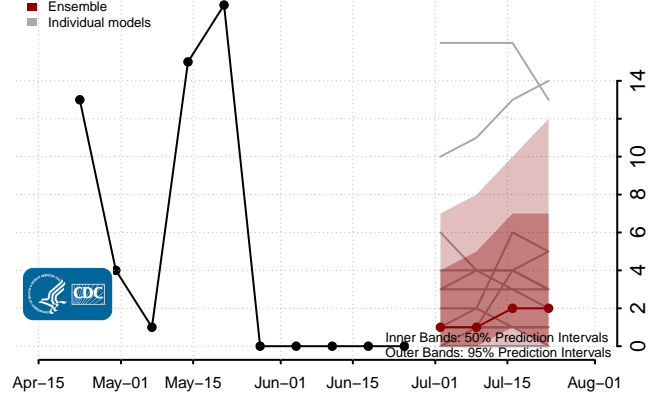
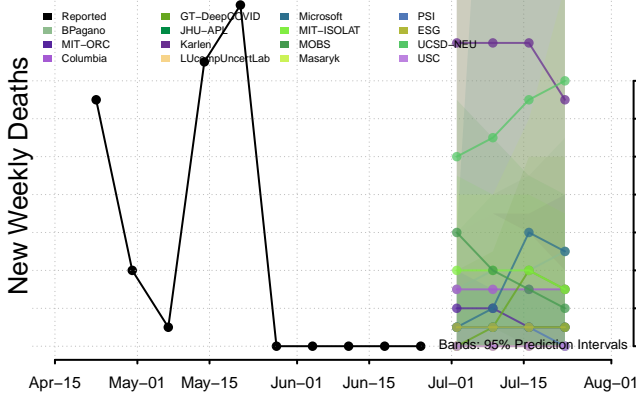
National



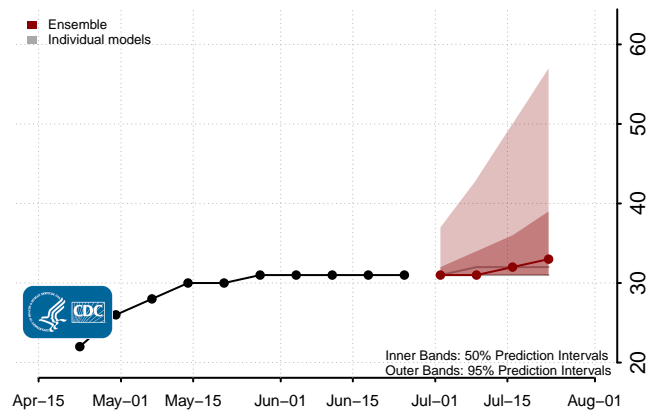
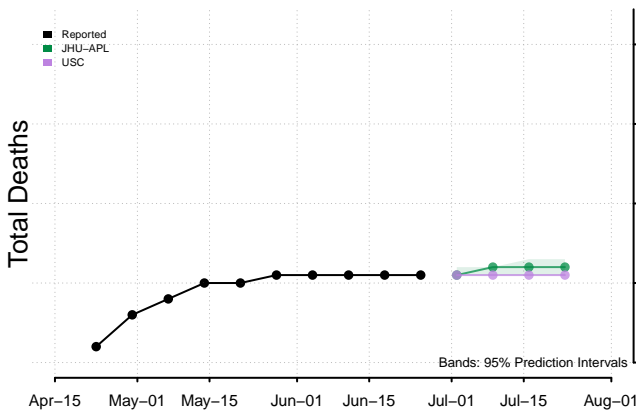
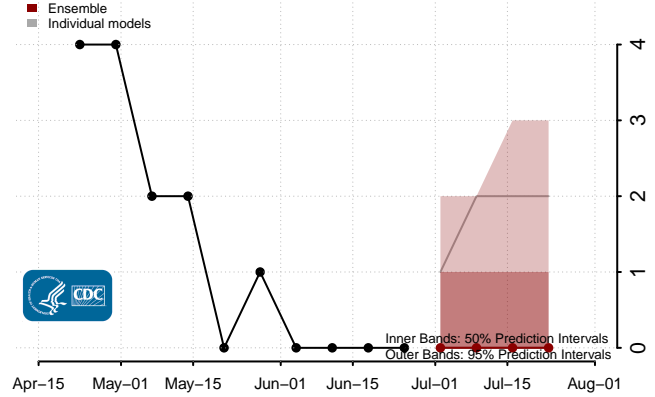
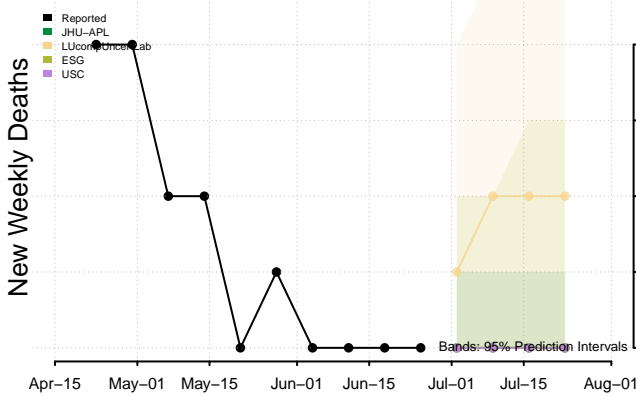
Alabama



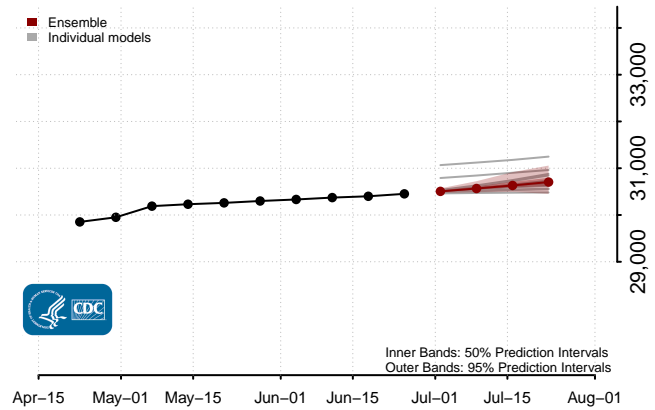
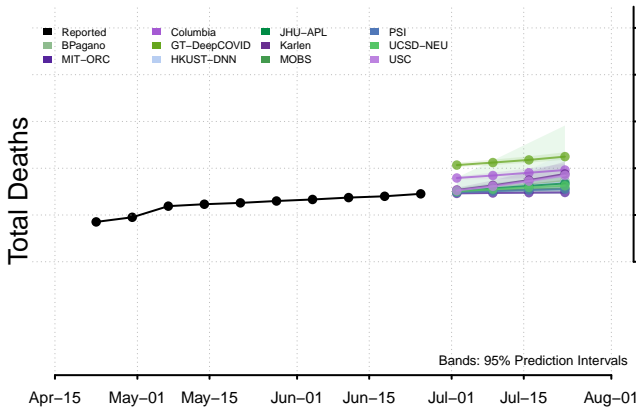
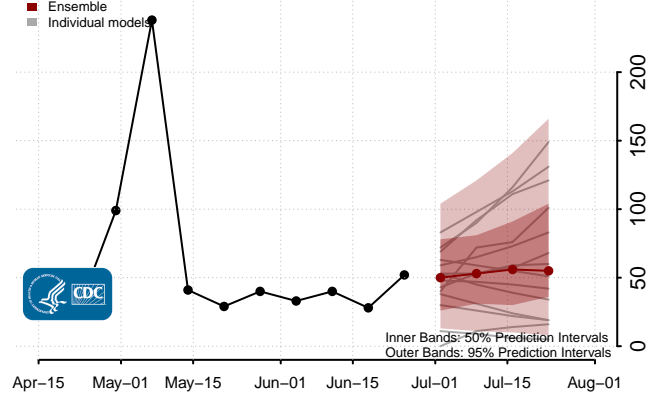
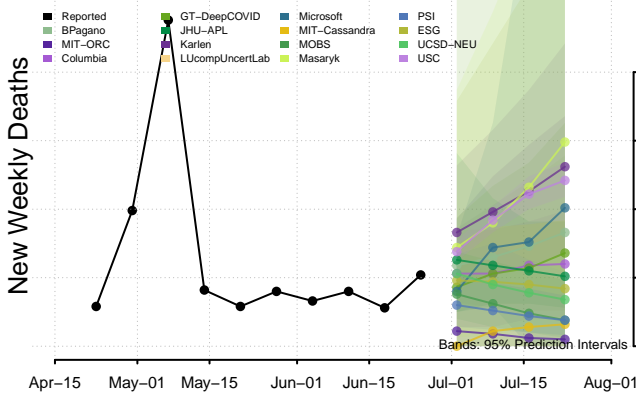
Alaska



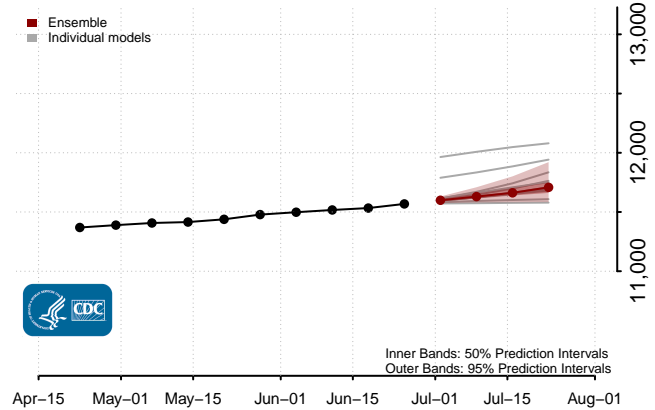
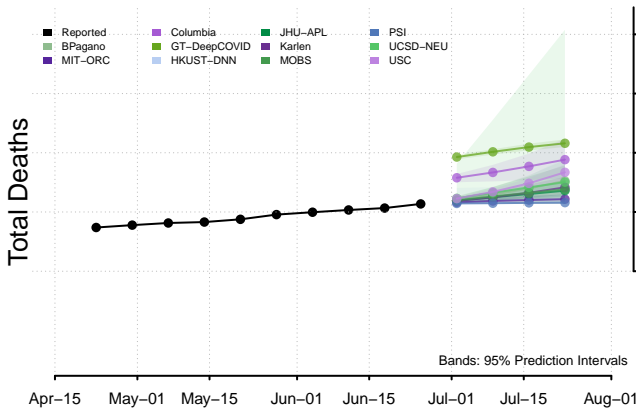
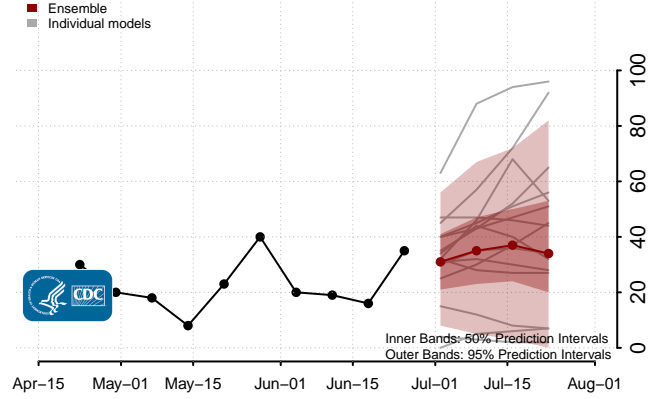
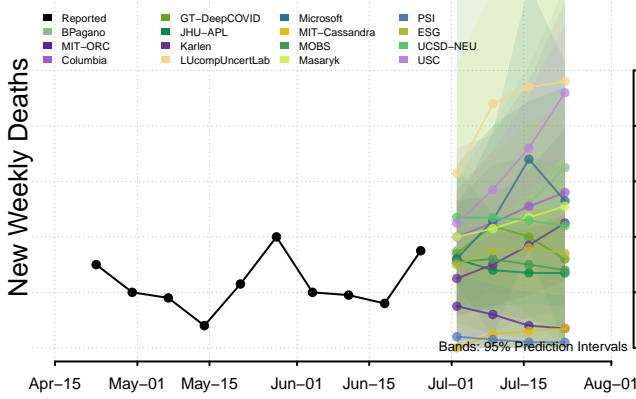
American Samoa



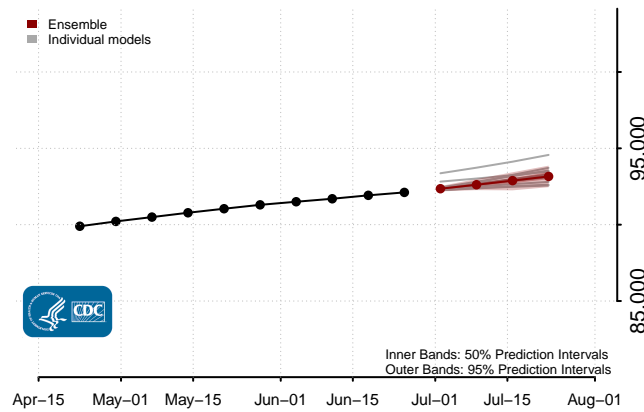
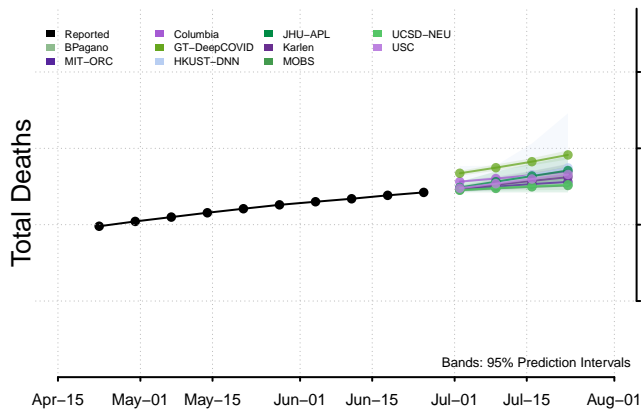
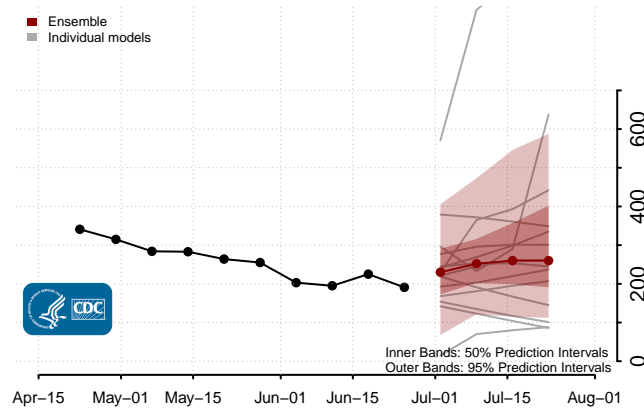
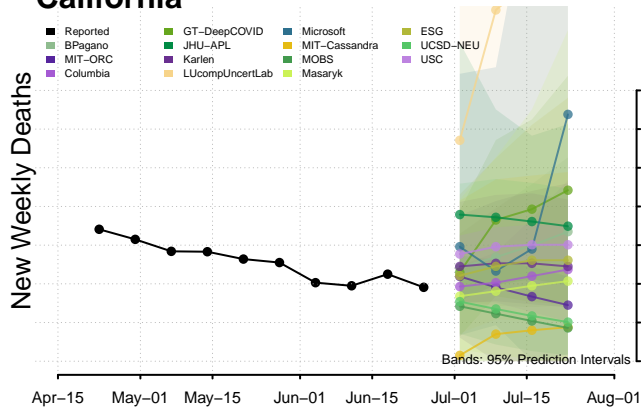
Arizona



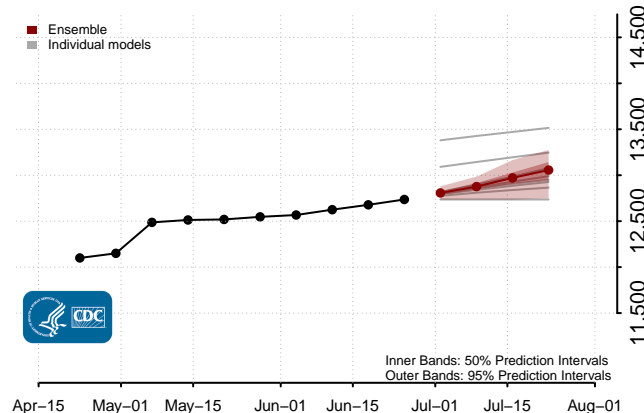
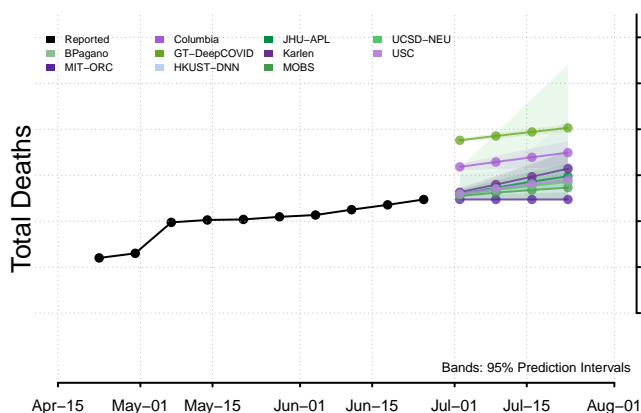
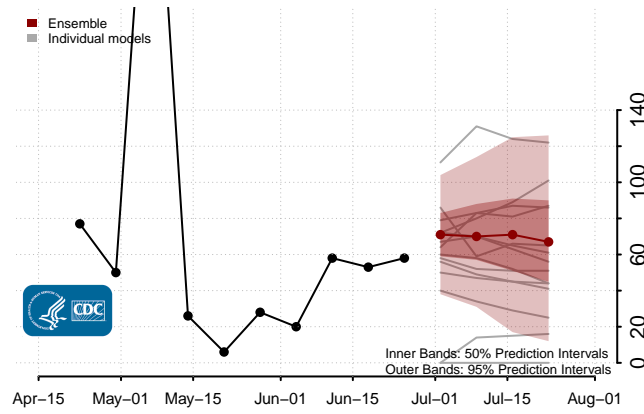
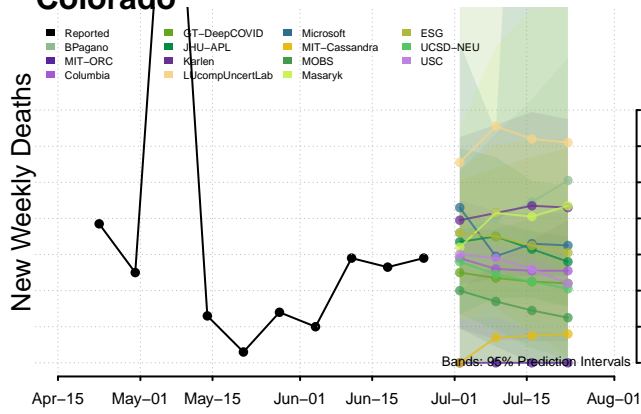
Arkansas



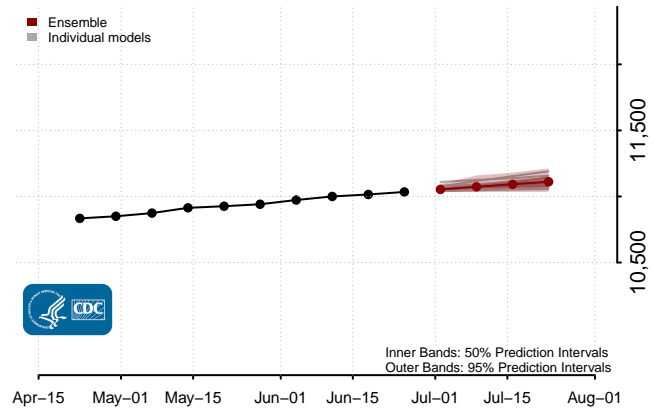
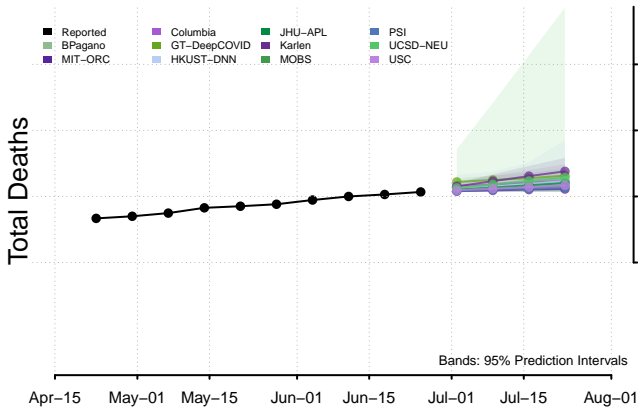
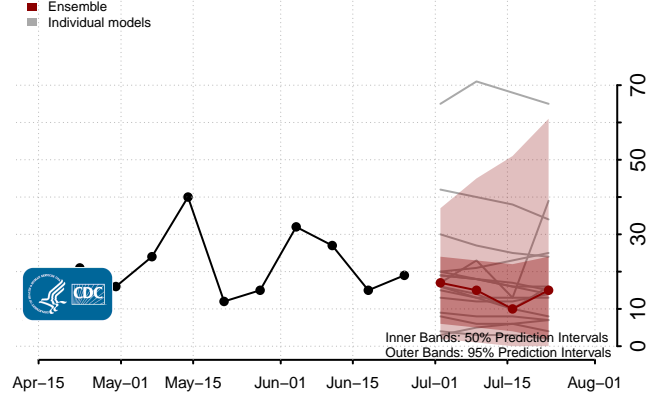
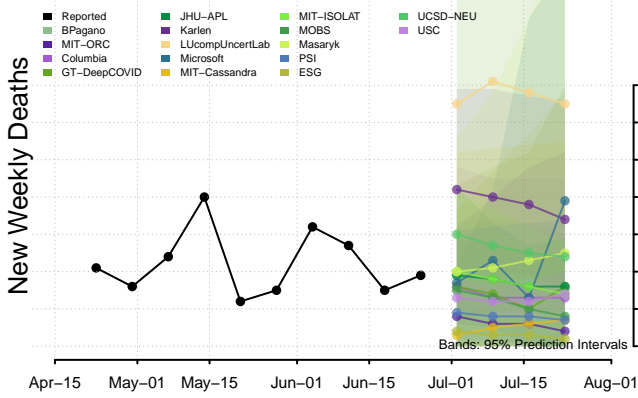
California



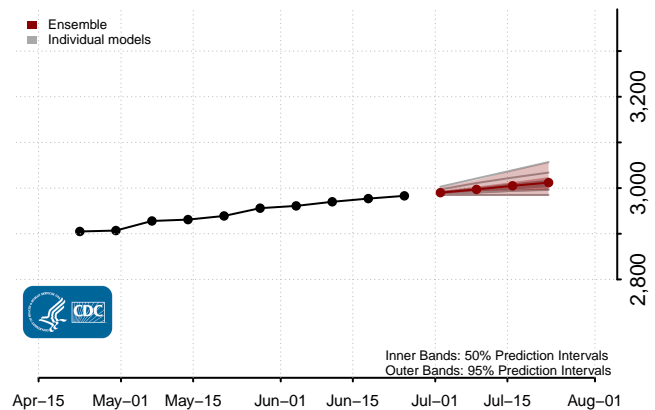
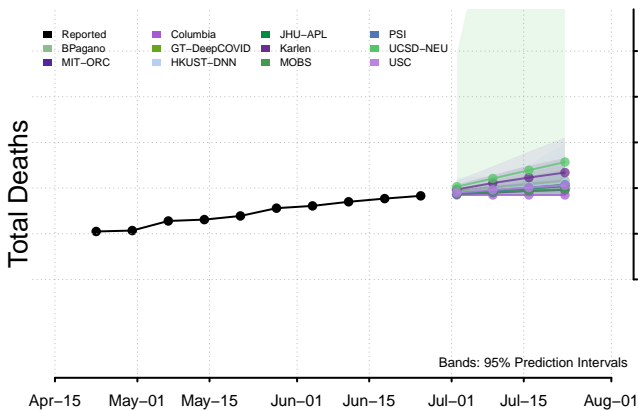
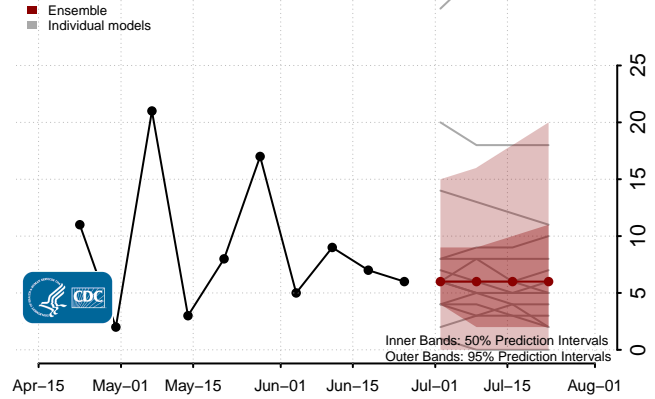
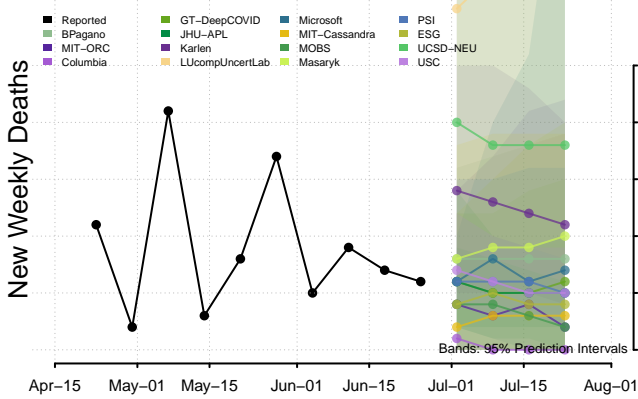
Colorado



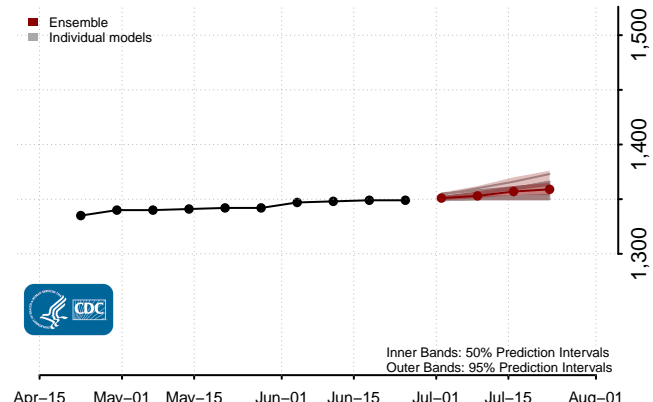
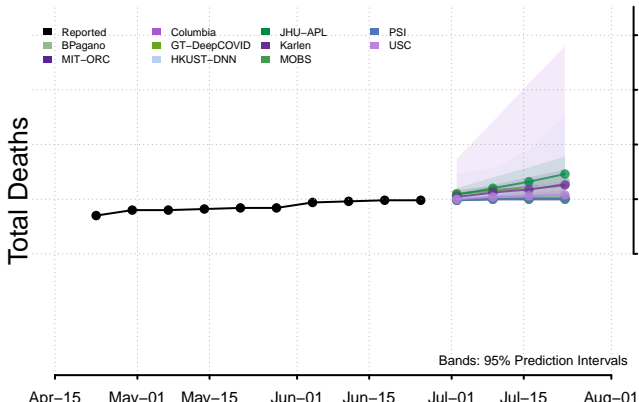
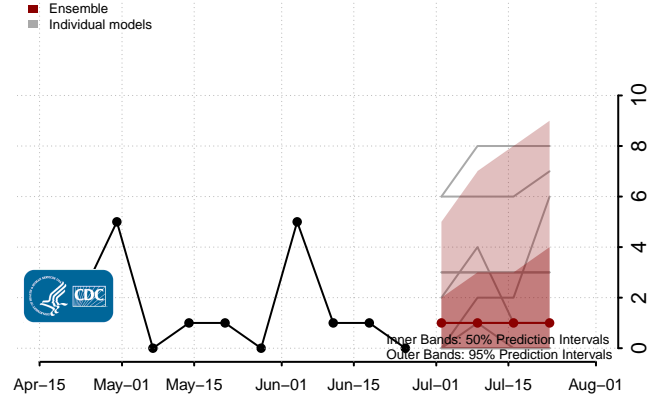
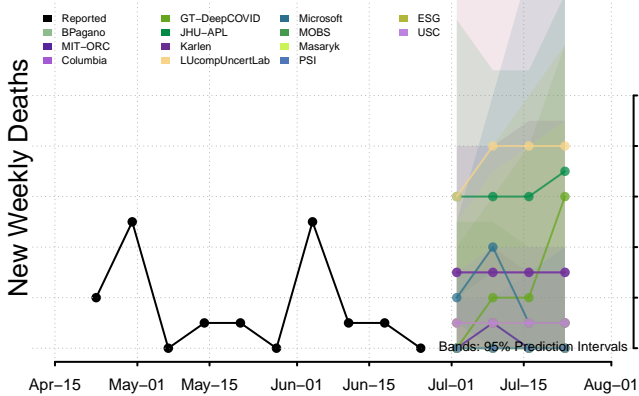
Connecticut



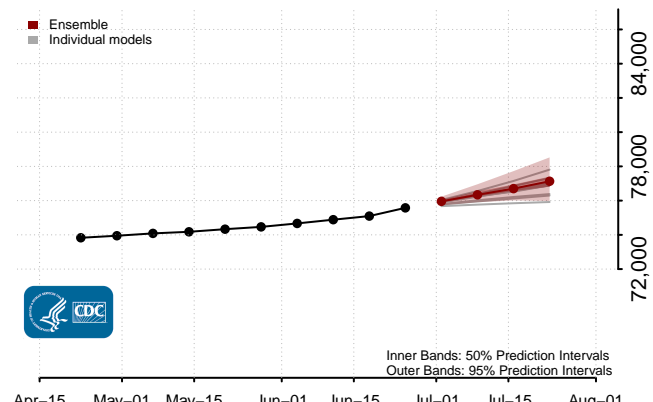
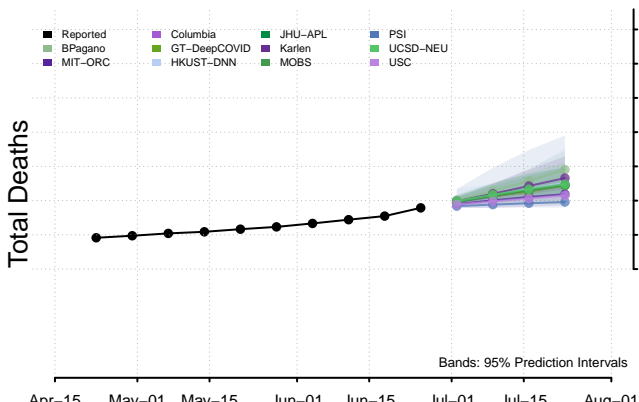
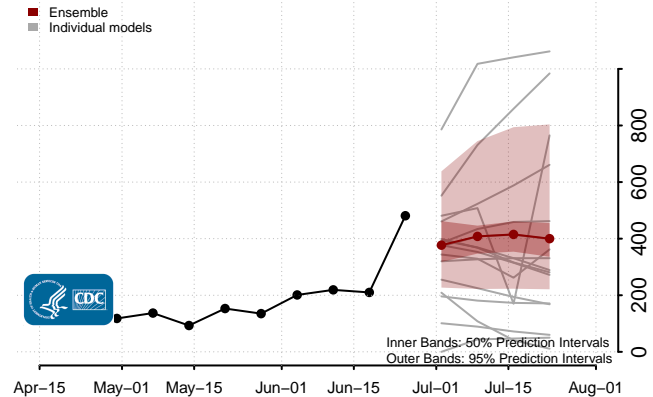
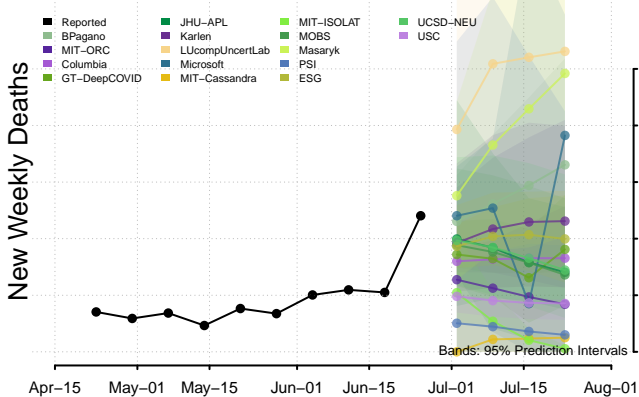
Delaware



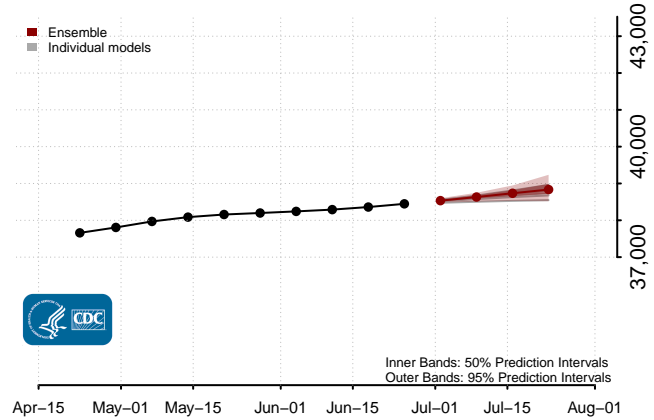
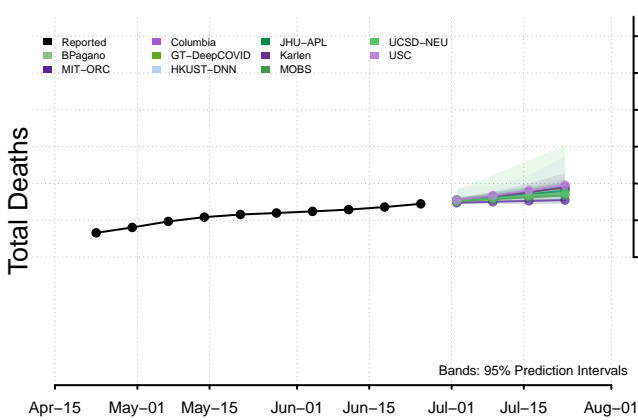
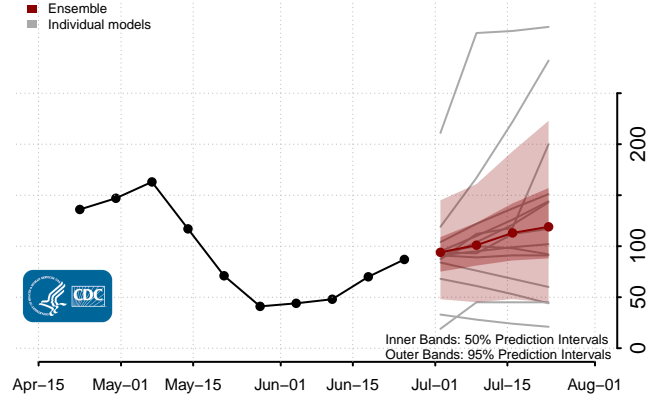
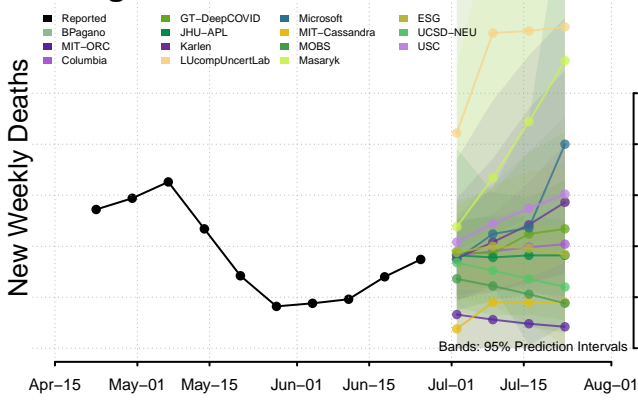
District of Columbia



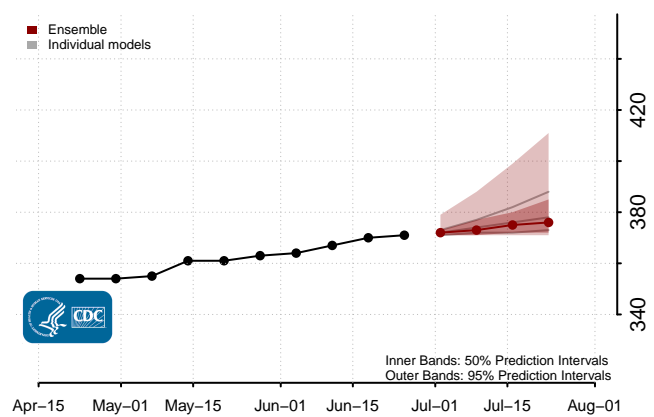
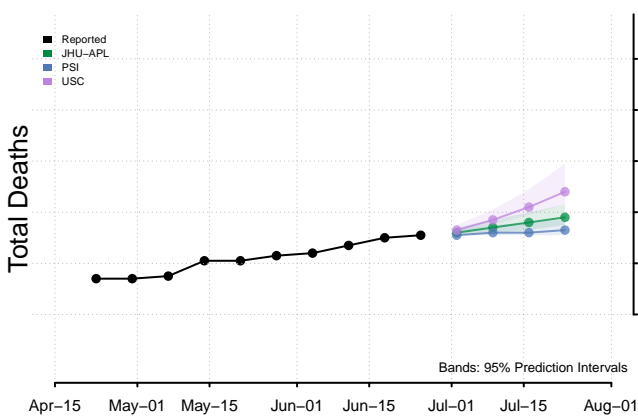
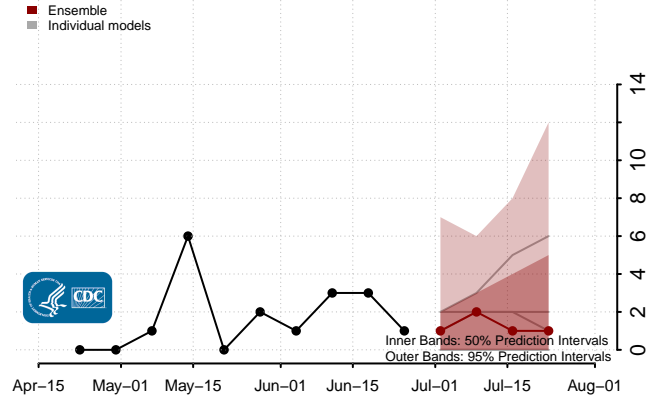
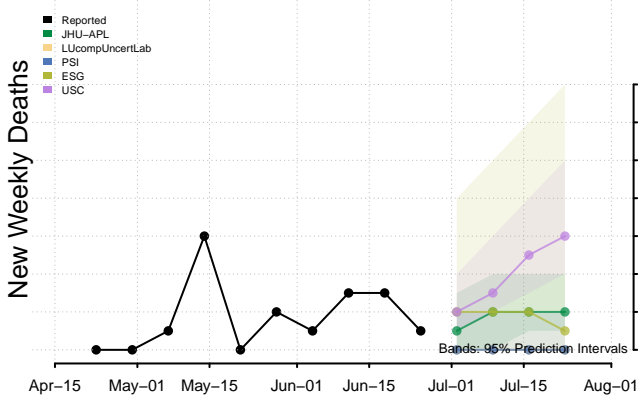
Florida



Georgia**

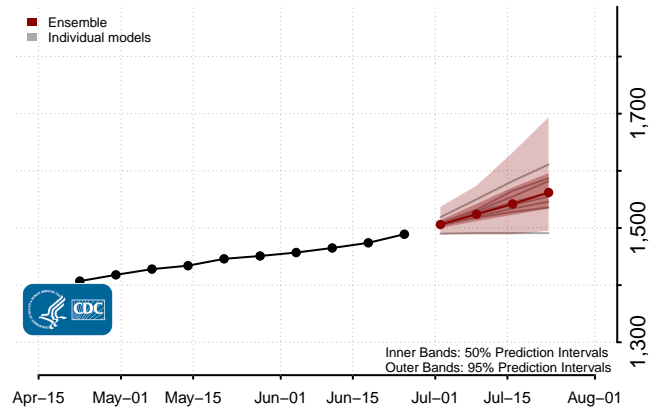
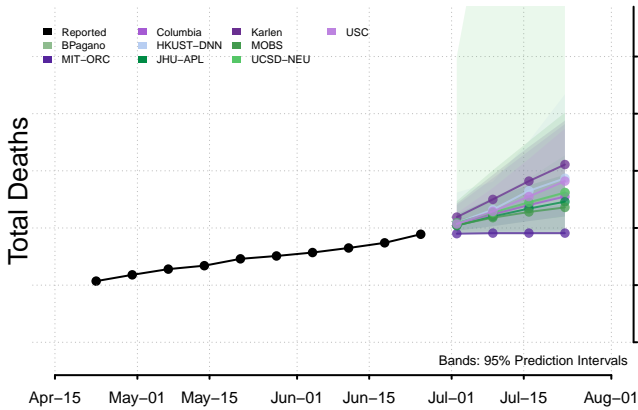
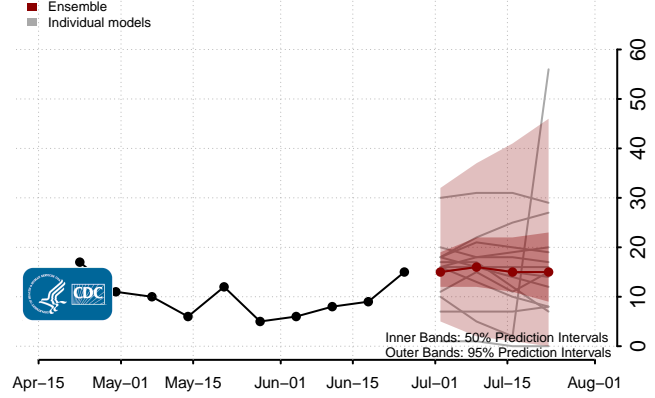
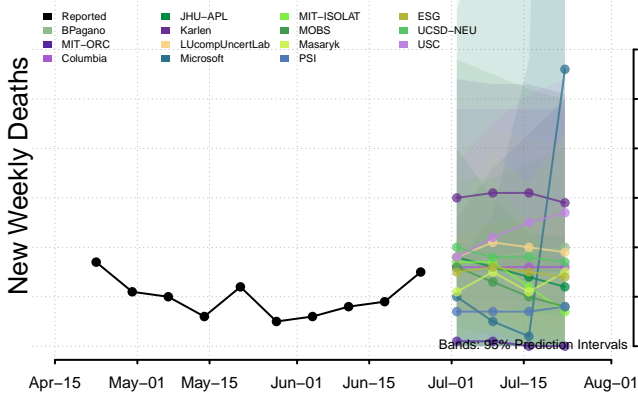


Guam

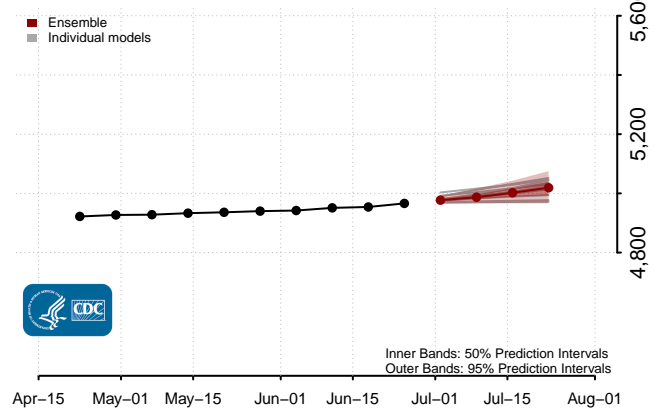
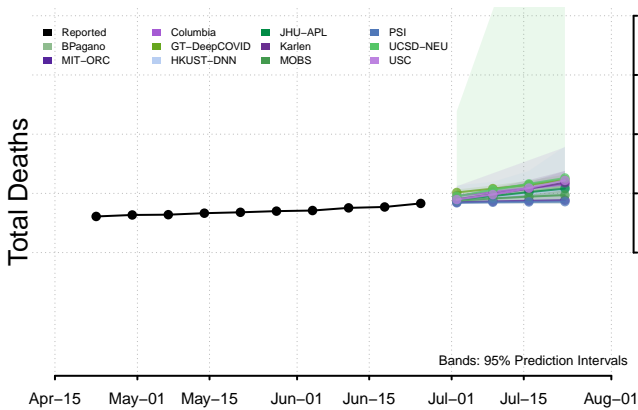
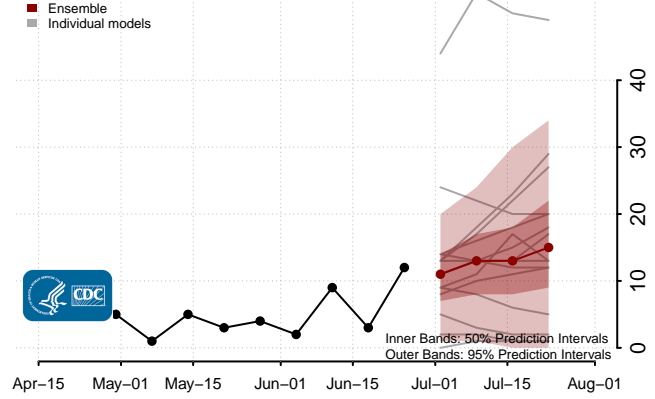
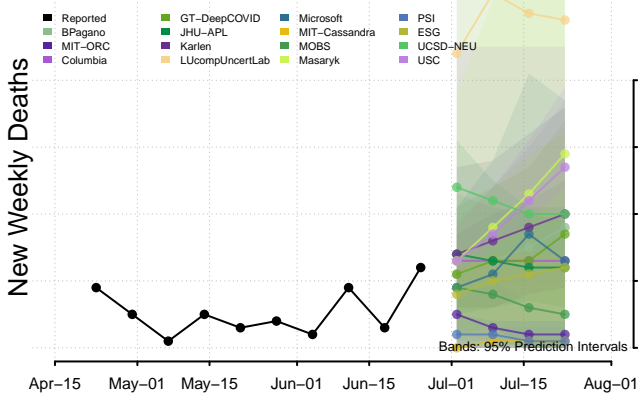


**New weekly deaths may increase in this location over the next four weeks. For these locations, the ensemble forecast indicates a probability of 0.75 or greater that more deaths will be reported in week four of the forecast than in the last reported week.

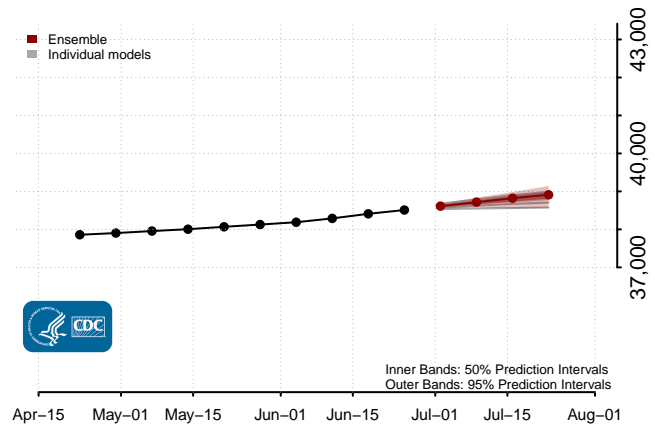
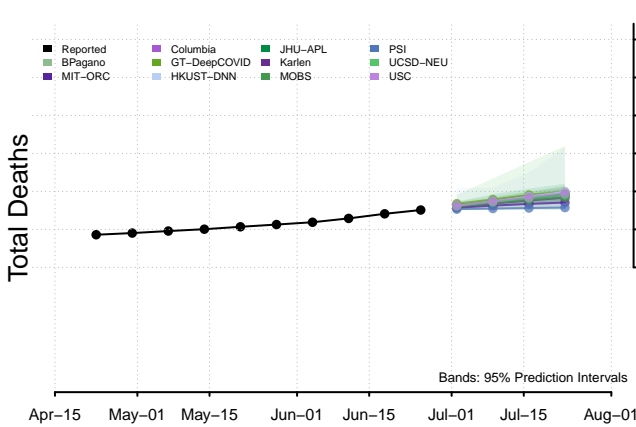
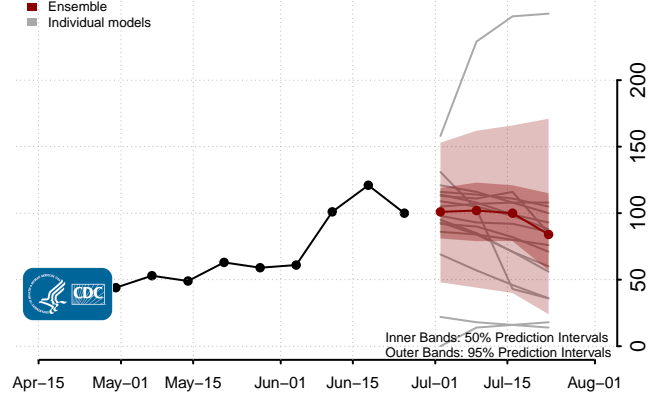
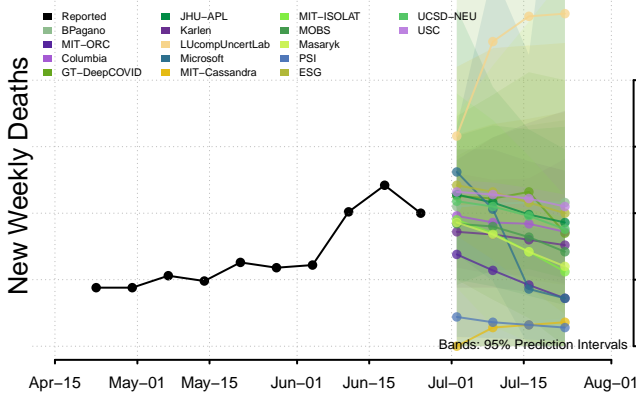
Hawaii



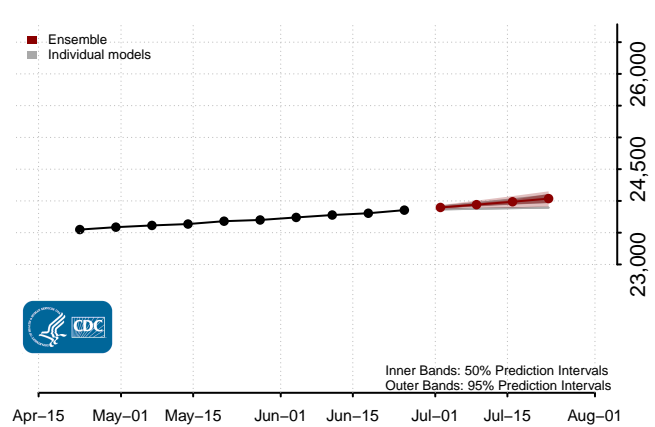
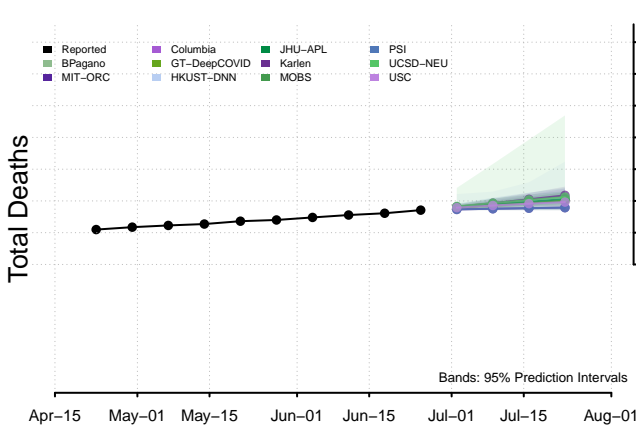
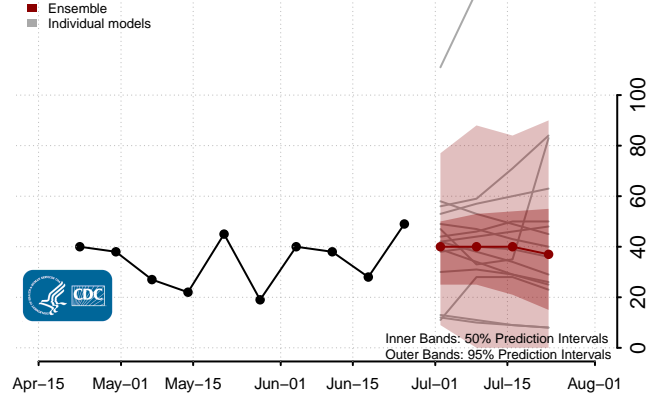
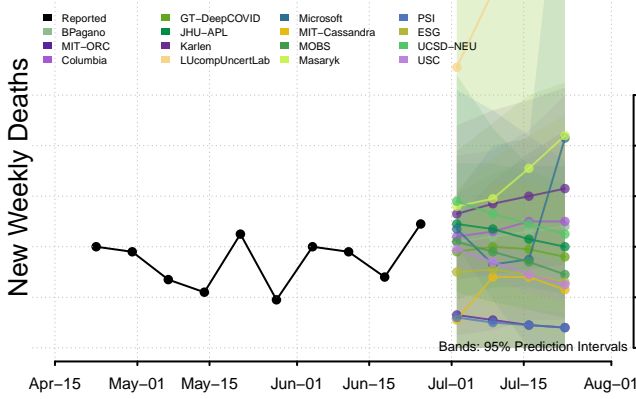
Idaho



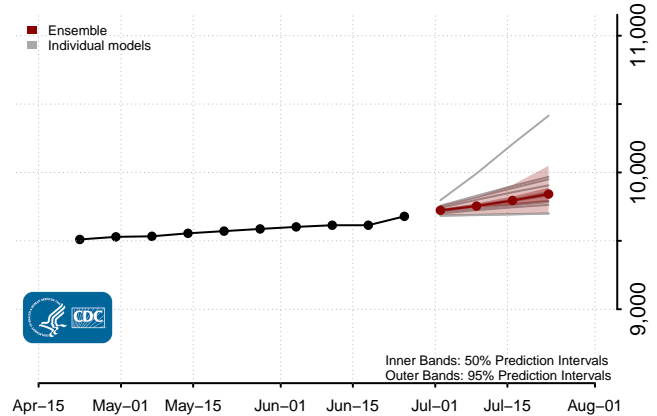
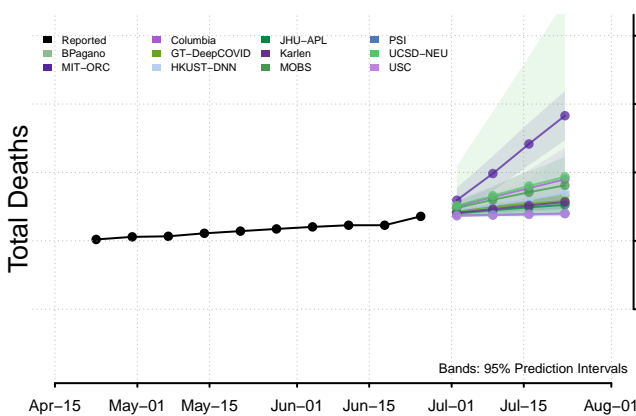
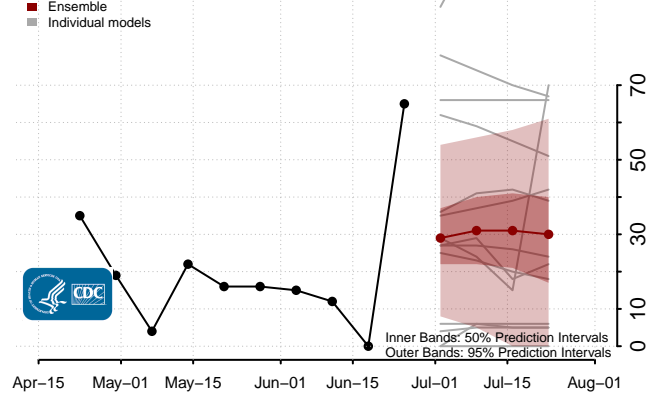
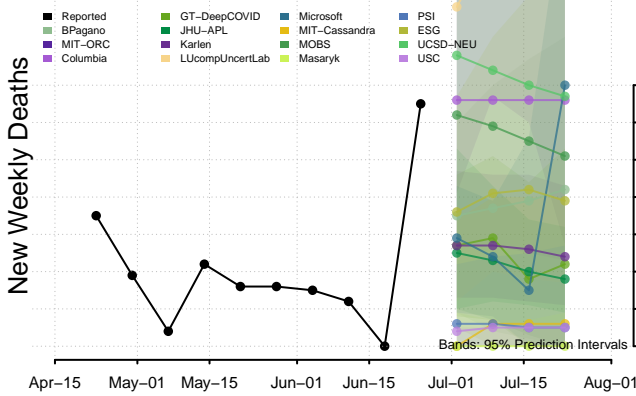
Illinois



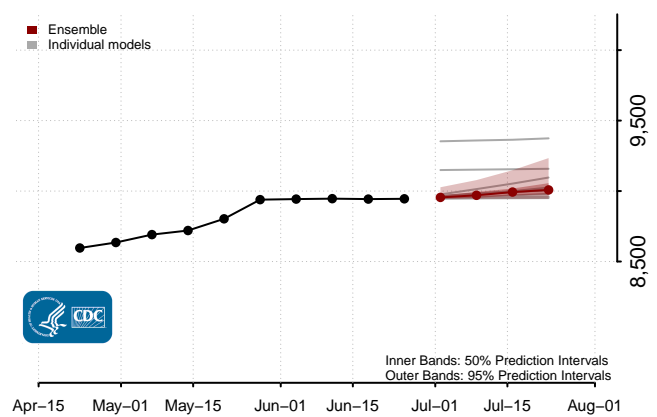
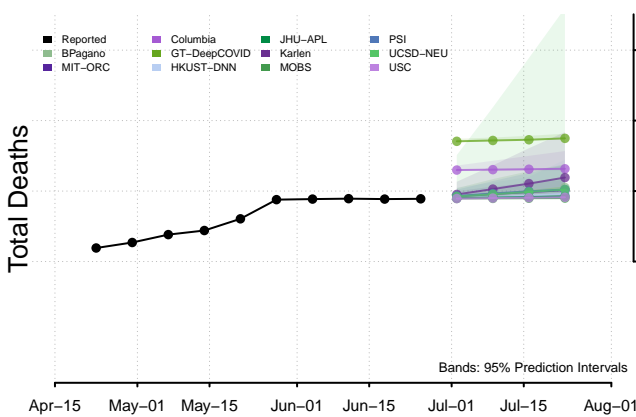
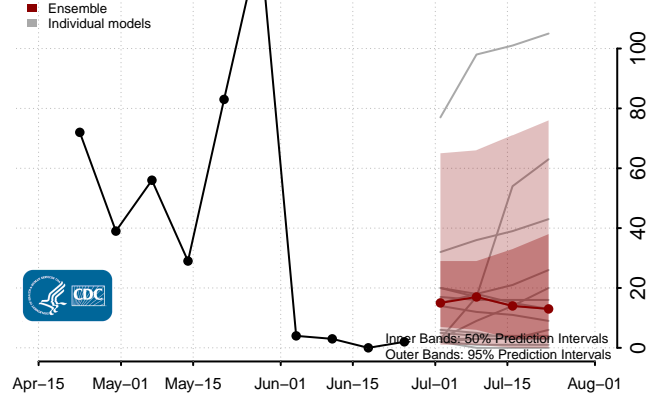
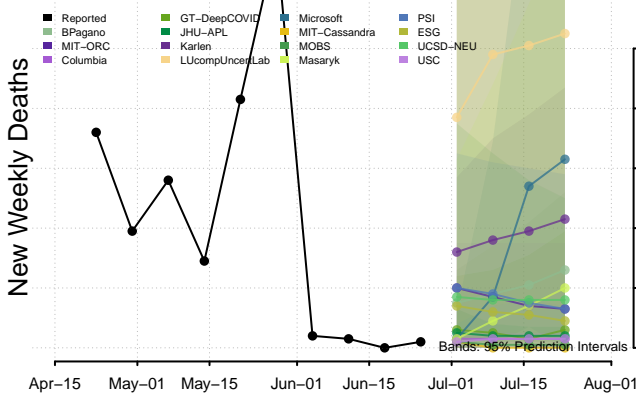
Indiana

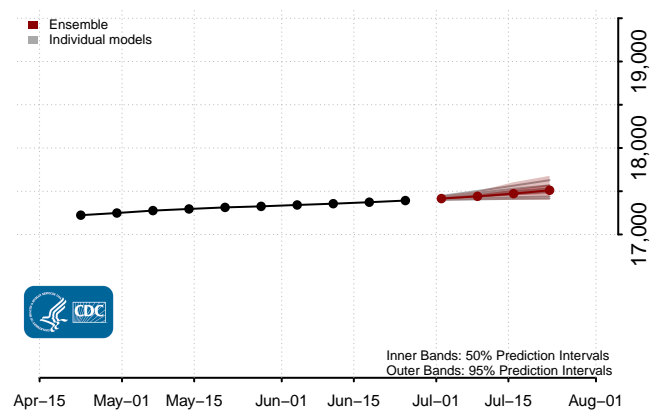
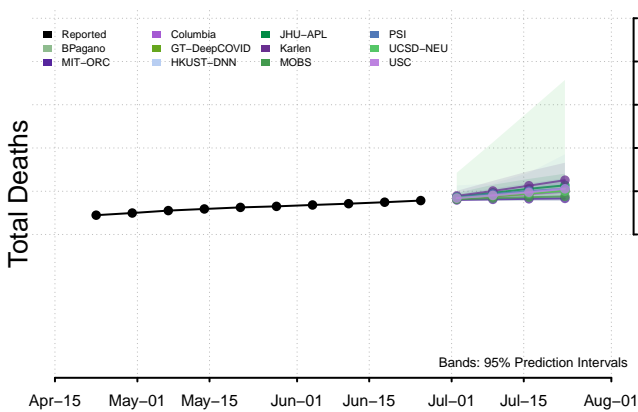
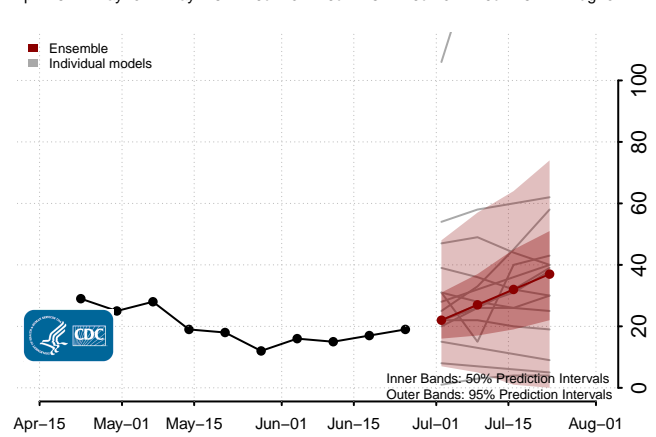
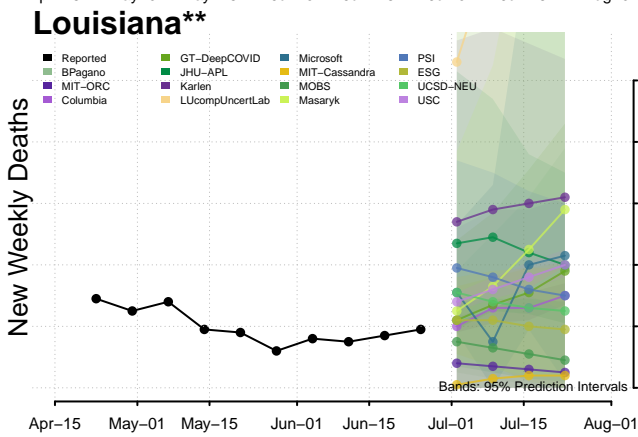
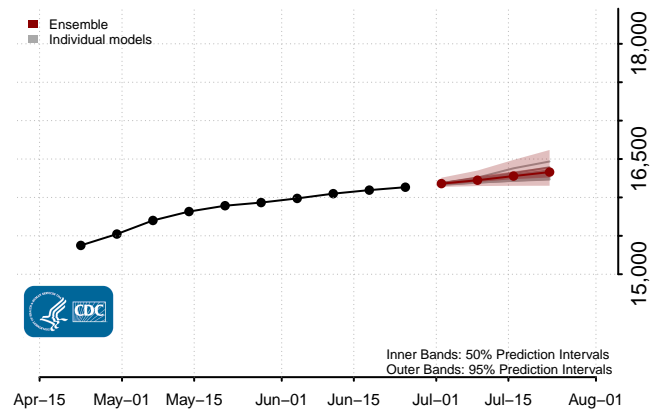
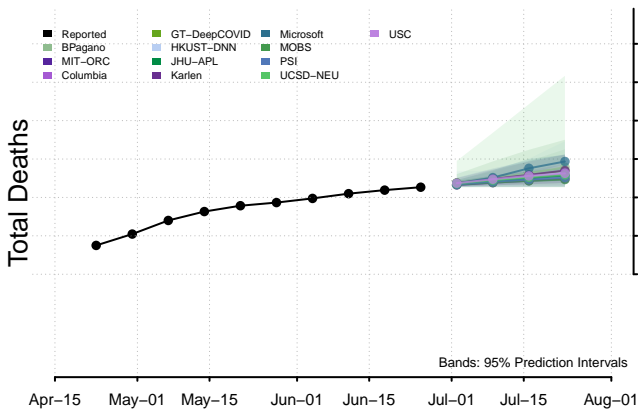
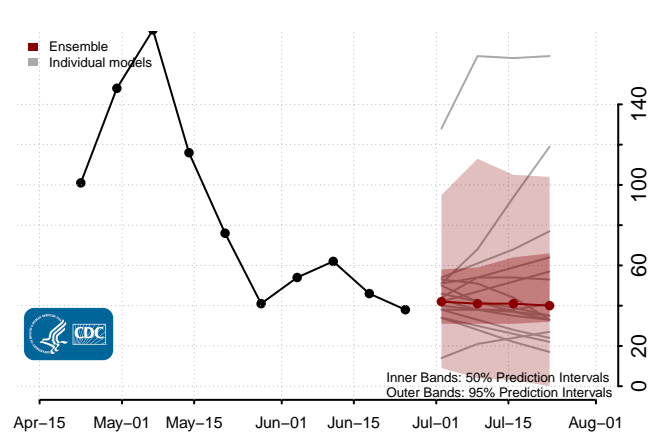
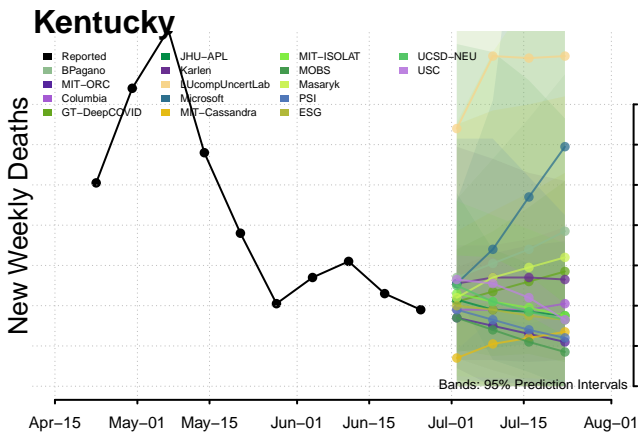


Iowa



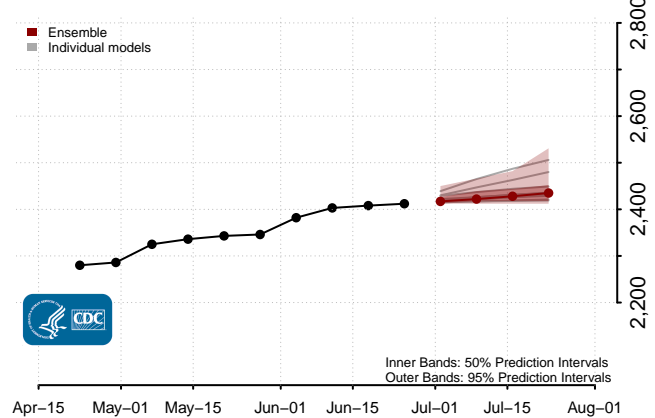
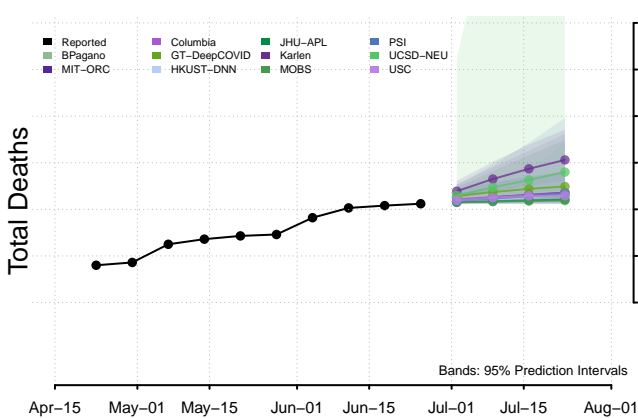
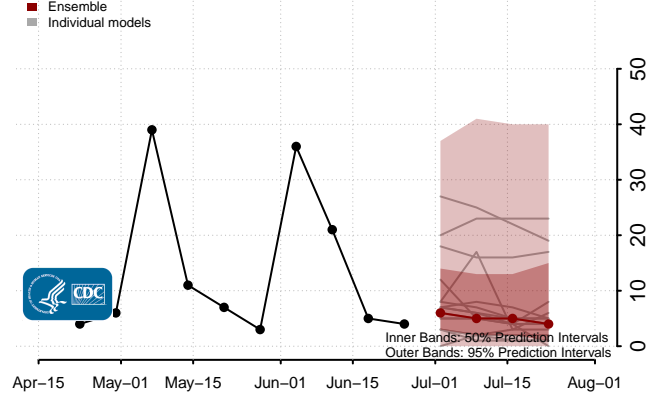
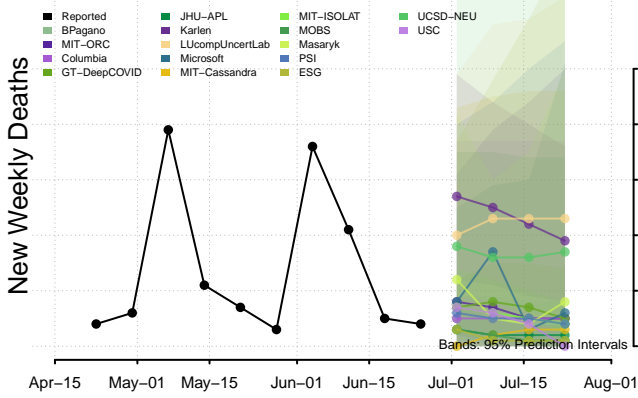
Kansas



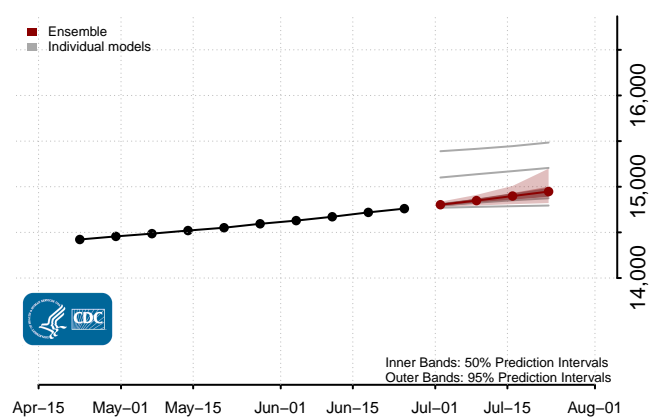
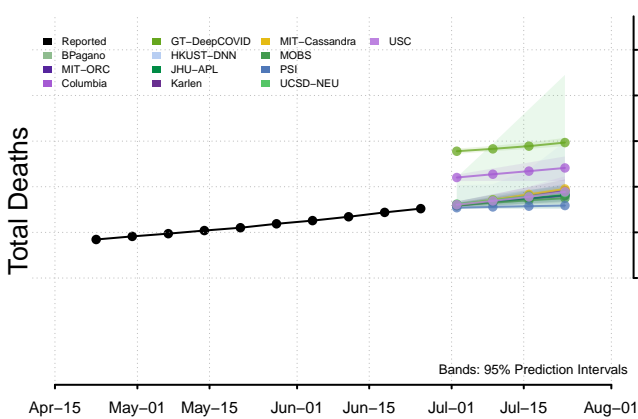
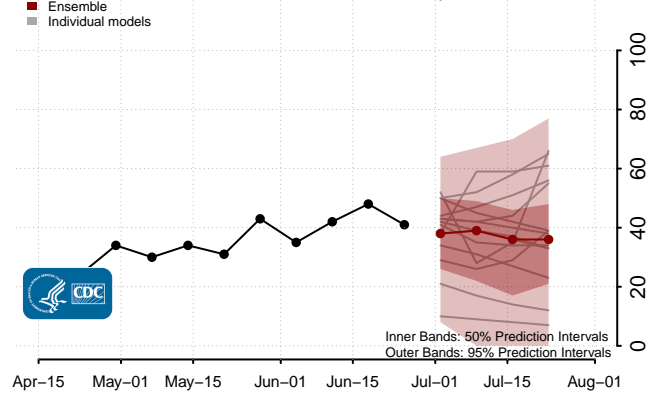
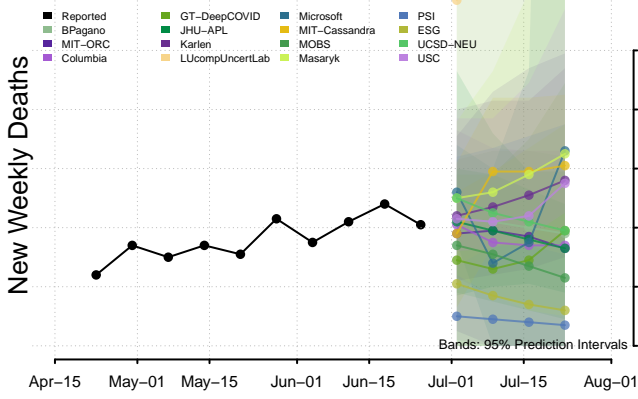


**New weekly deaths may increase in this location over the next four weeks. For these locations, the ensemble forecast indicates a probability of 0.75 or greater that more deaths will be reported in week four of the forecast than in the last reported week.

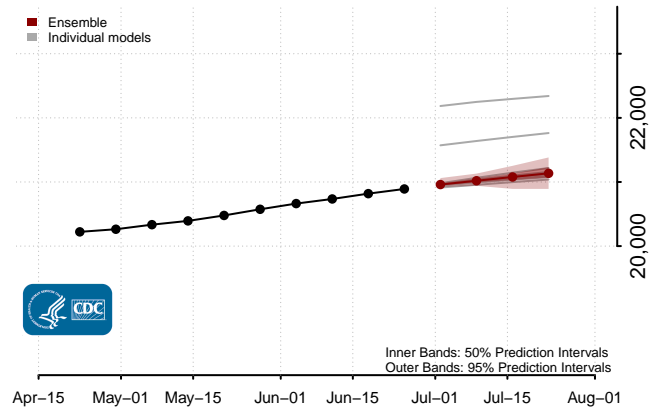
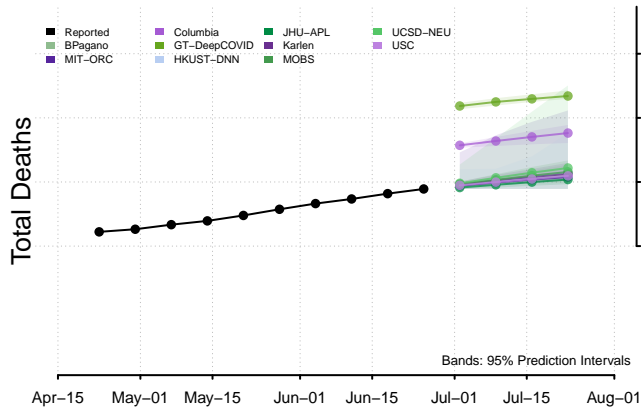
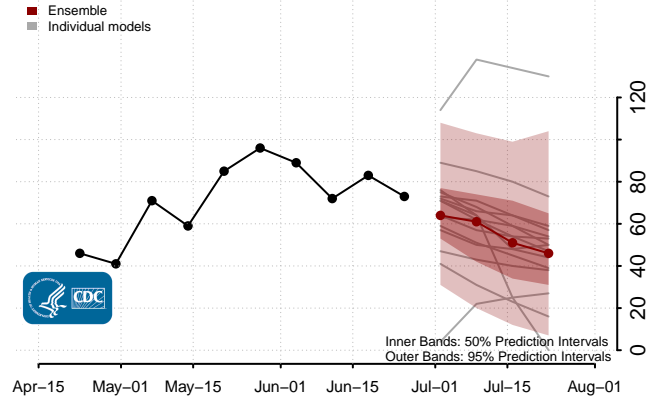
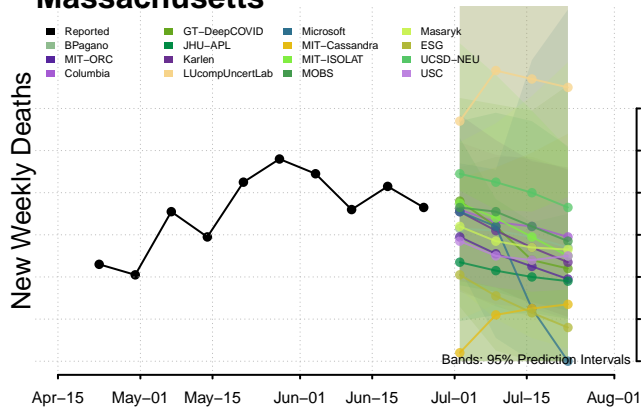
Maine



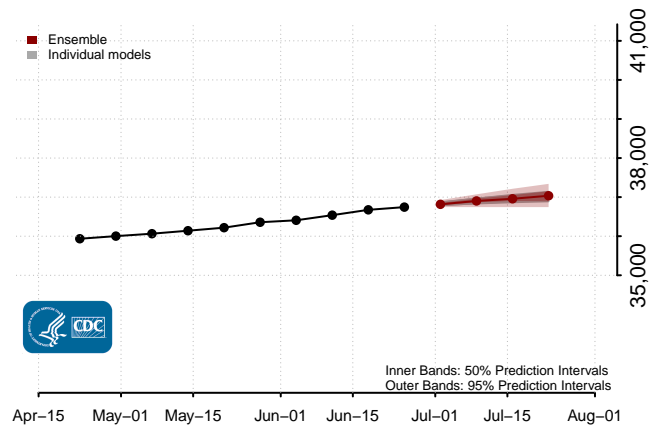
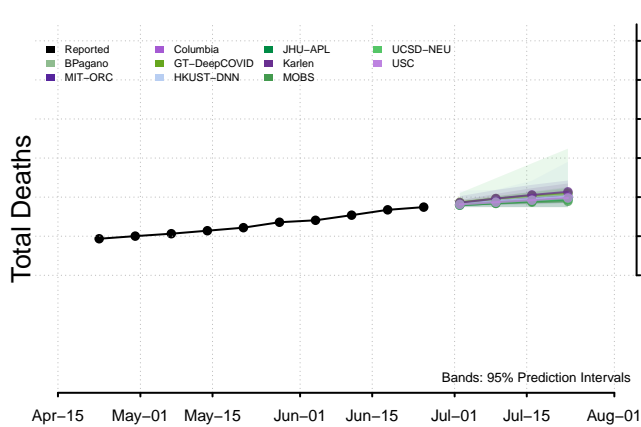
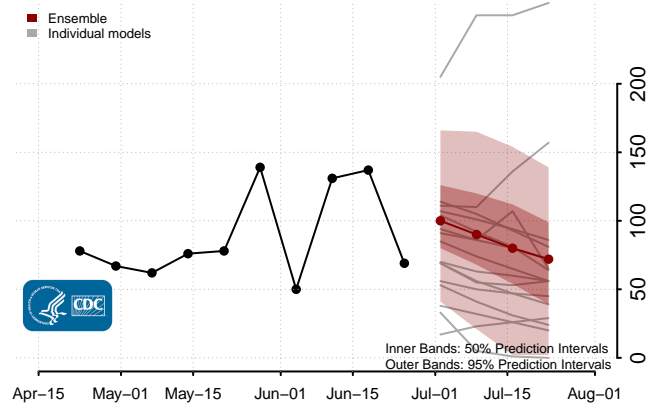
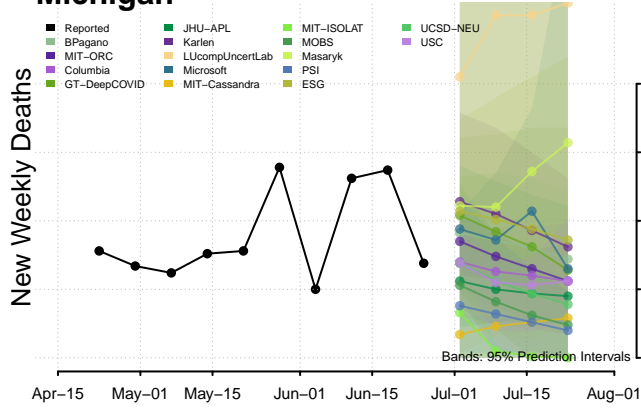
Maryland



Massachusetts*

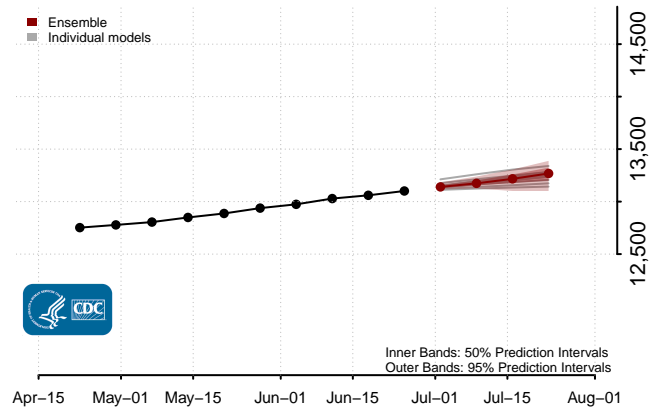
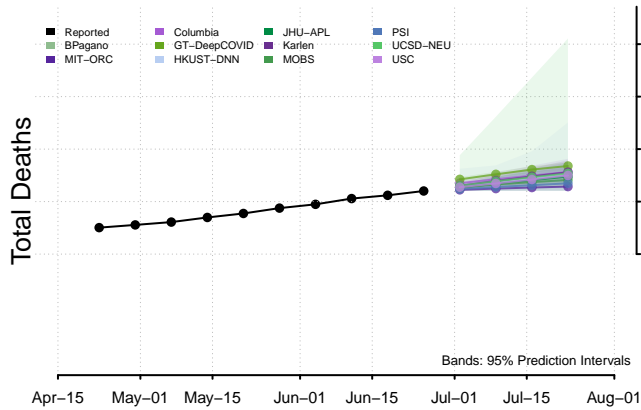
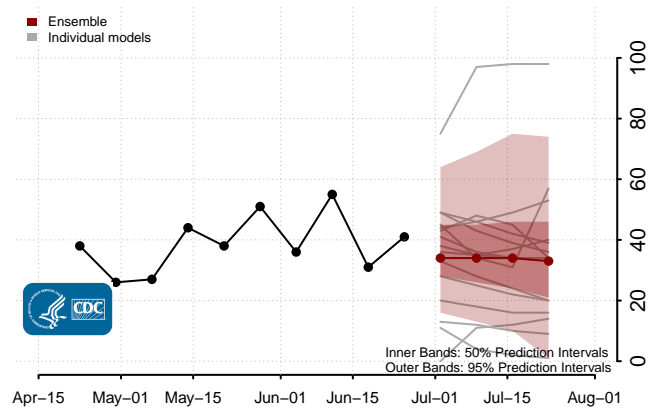
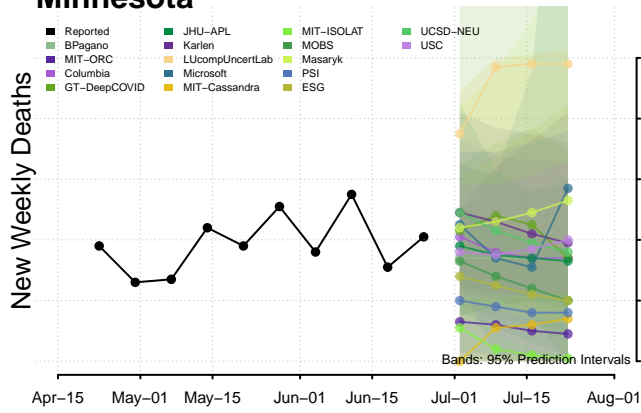


Michigan

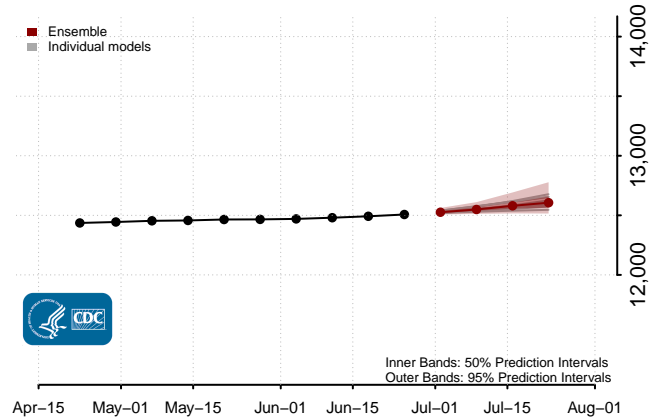
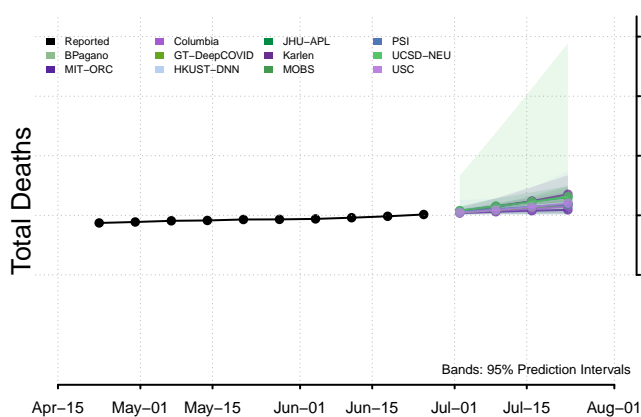
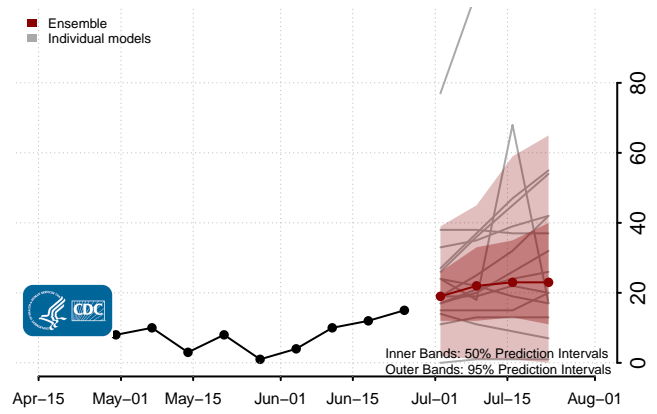
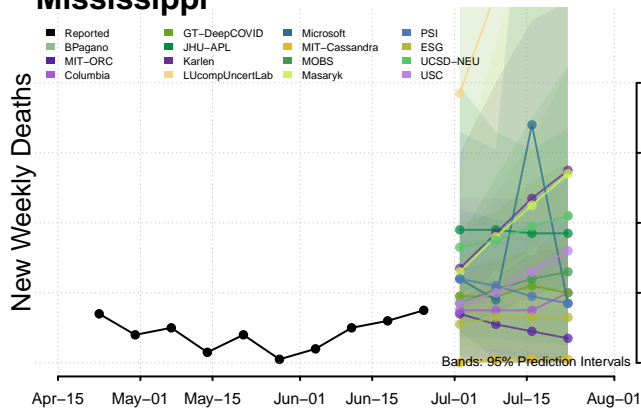


*New weekly deaths may decrease in this location over the next four weeks. For these locations, the ensemble forecast indicates a probability of 0.75 or greater that fewer deaths will be reported in week four of the forecast than in the last reported week.

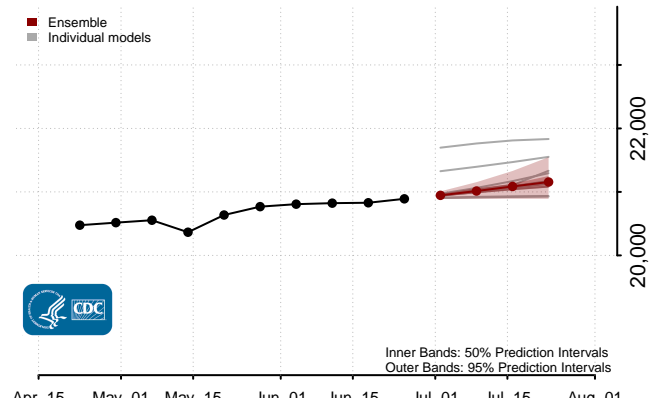
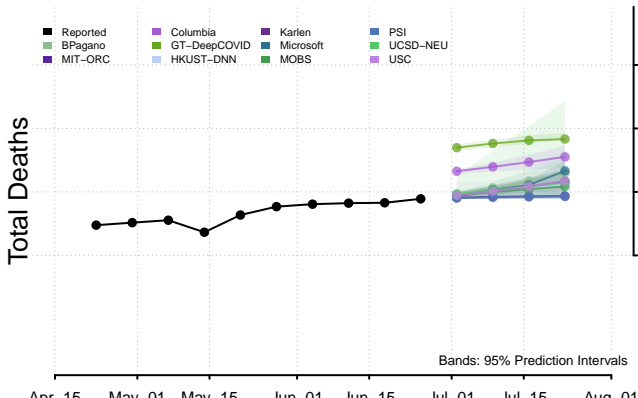
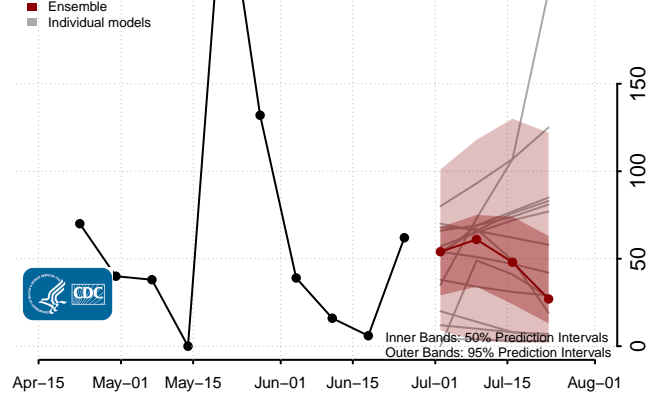
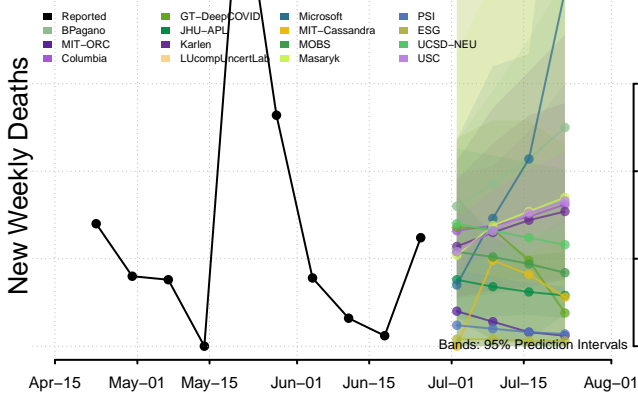
Minnesota



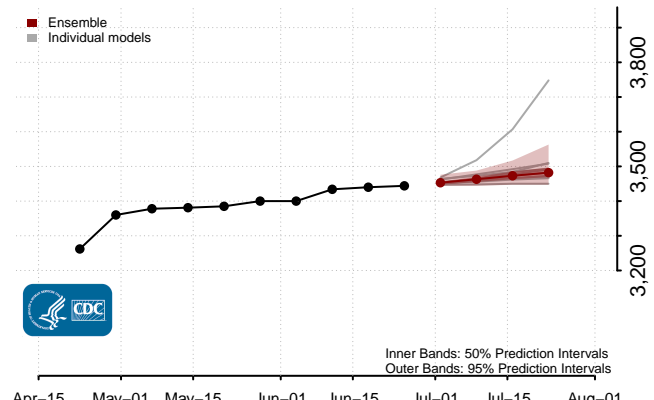
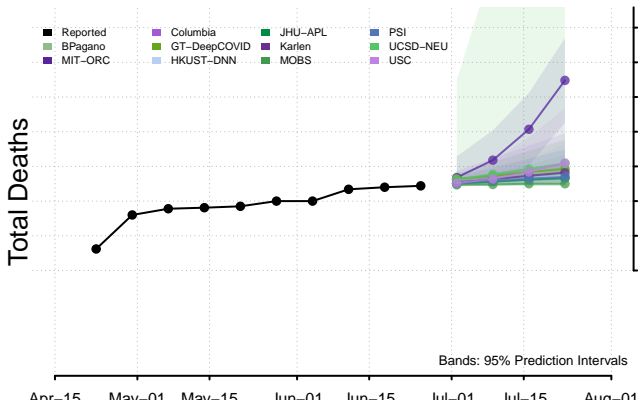
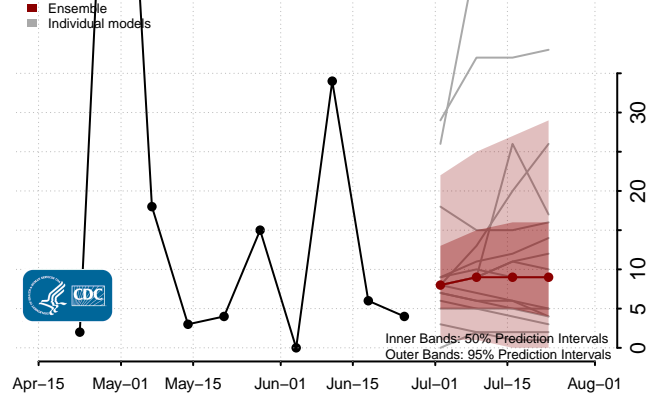
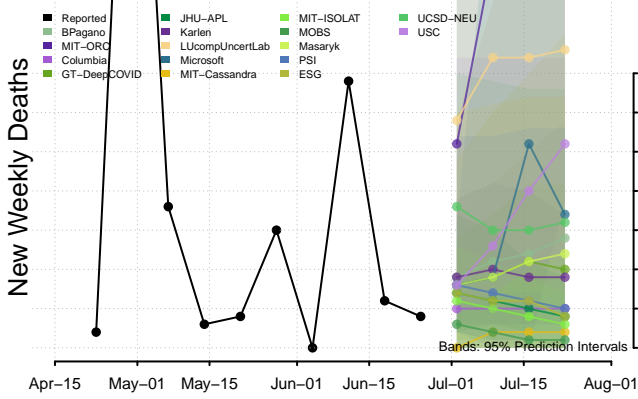
Mississippi



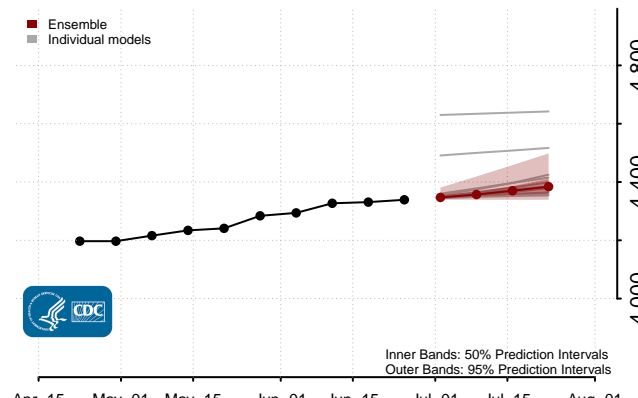
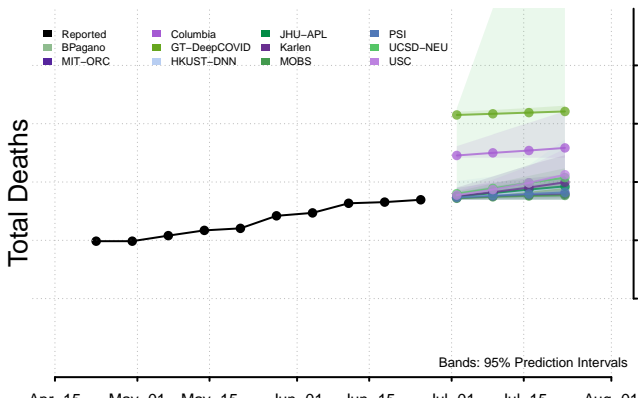
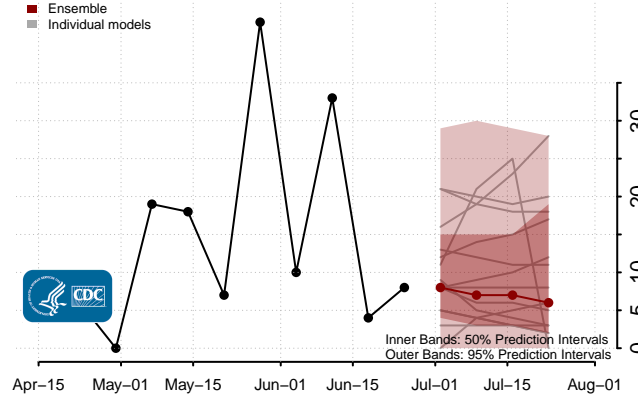
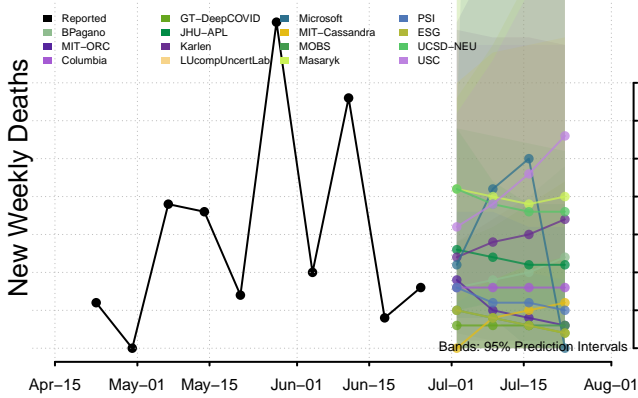
Missouri



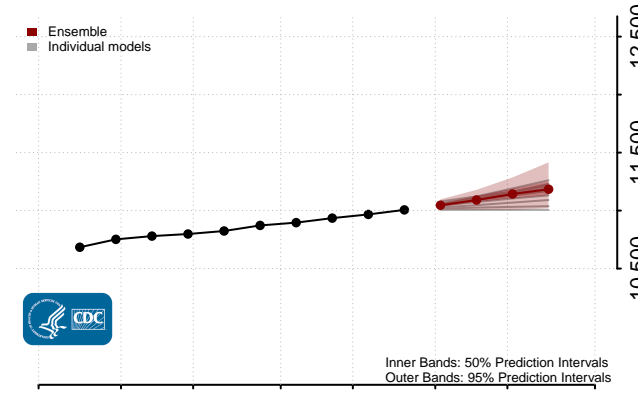
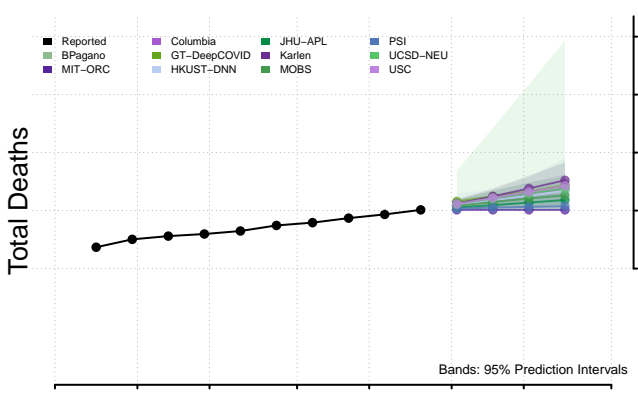
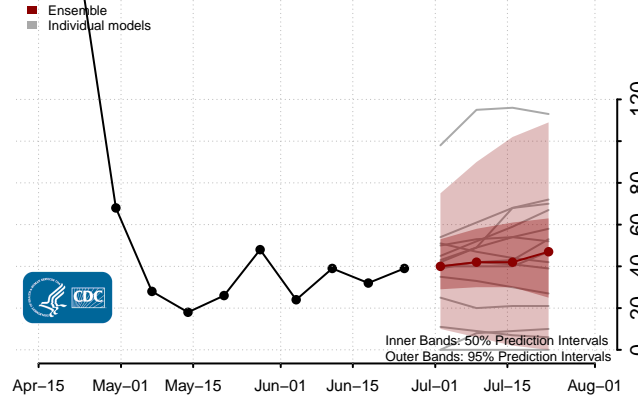
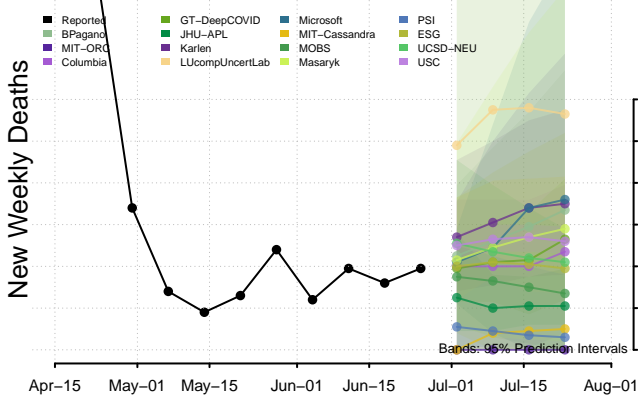
Montana



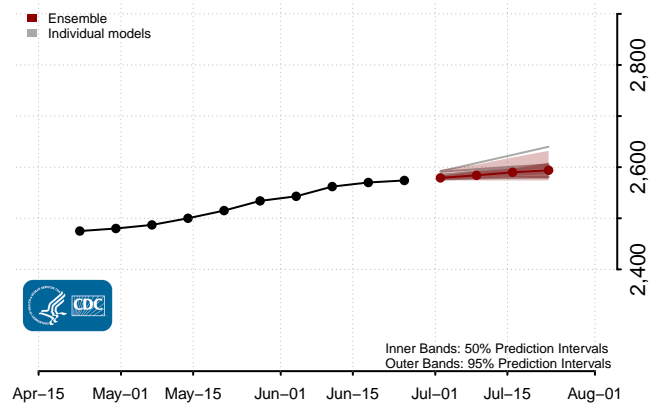
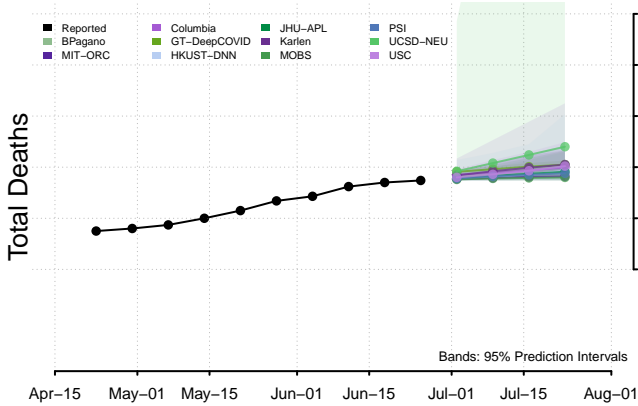
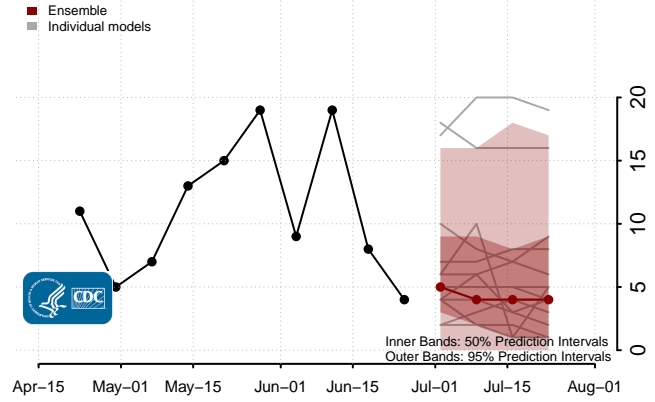
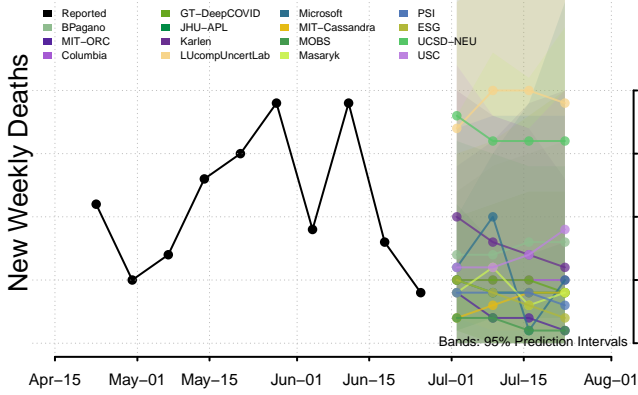
Nebraska



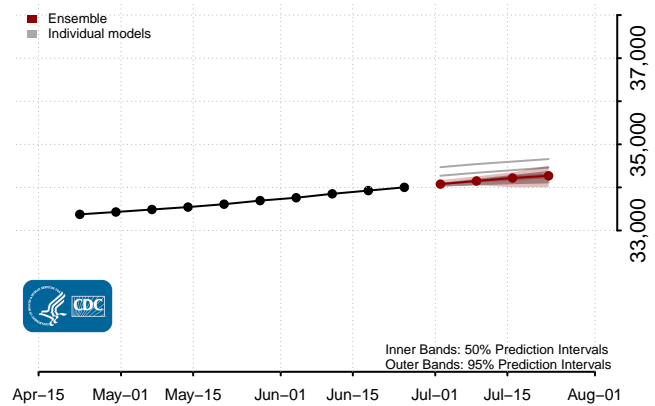
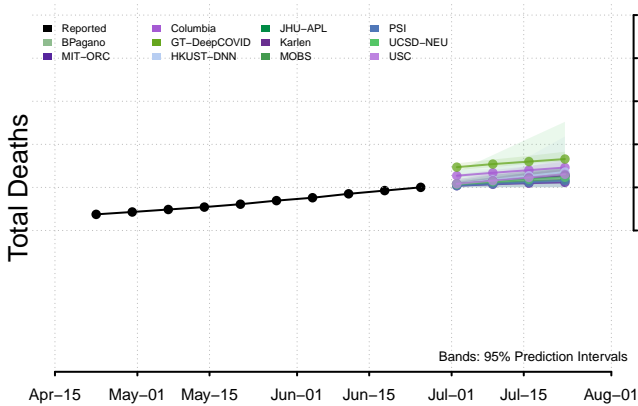
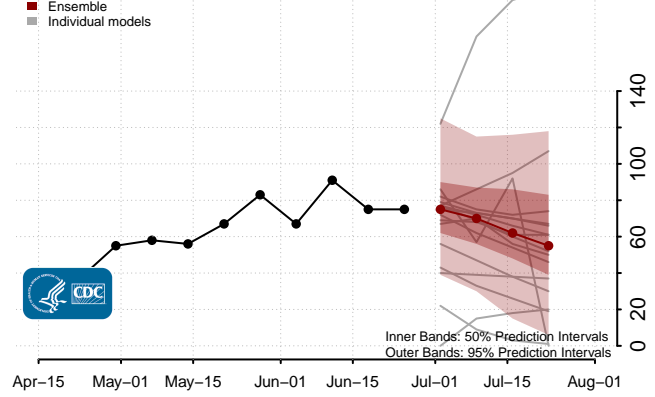
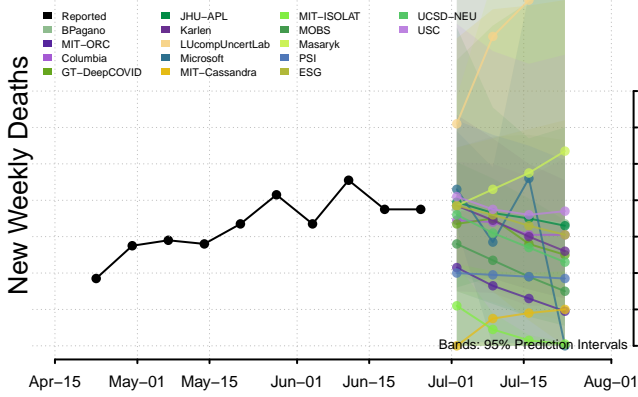
Nevada

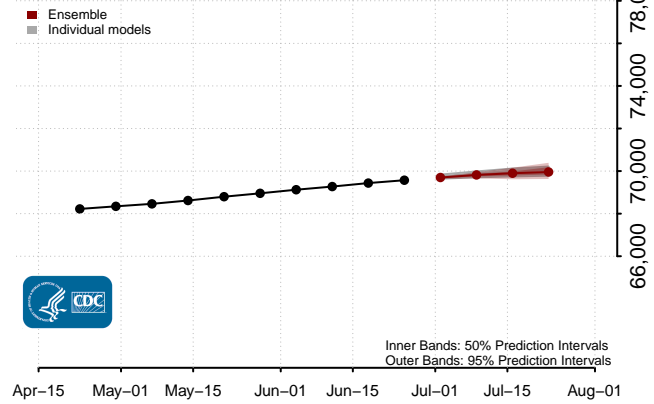
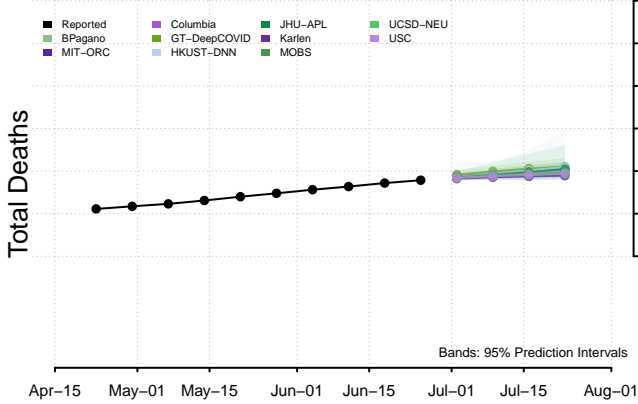
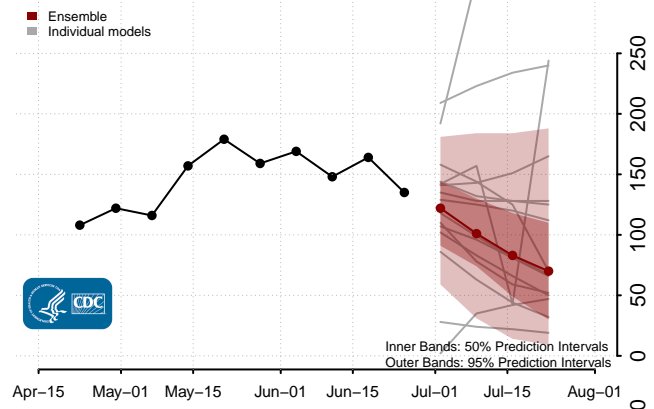
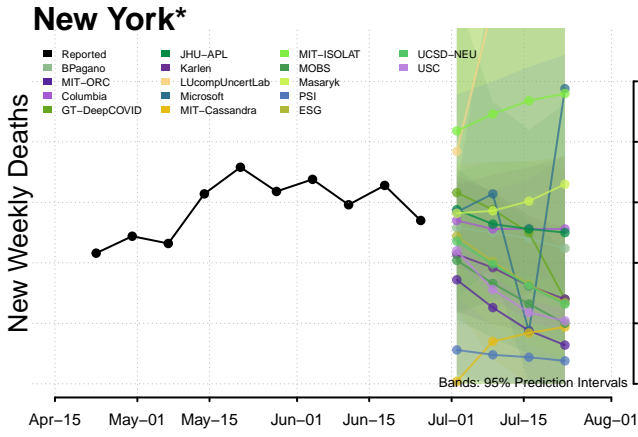
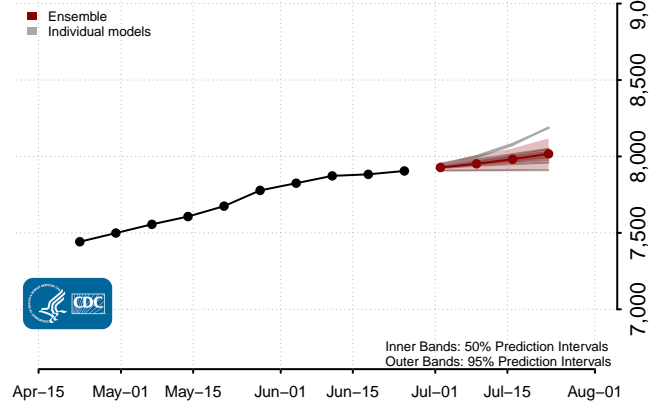
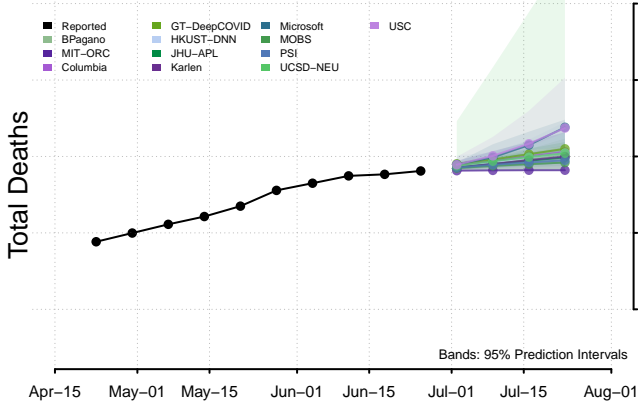
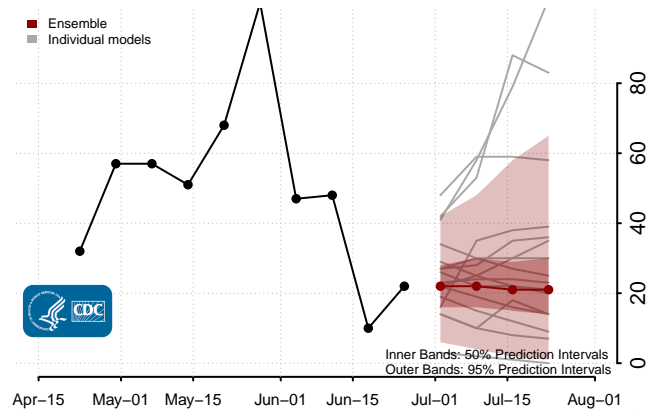
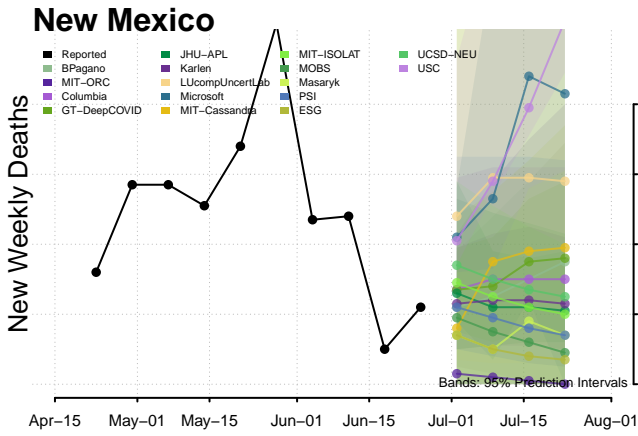


New Hampshire



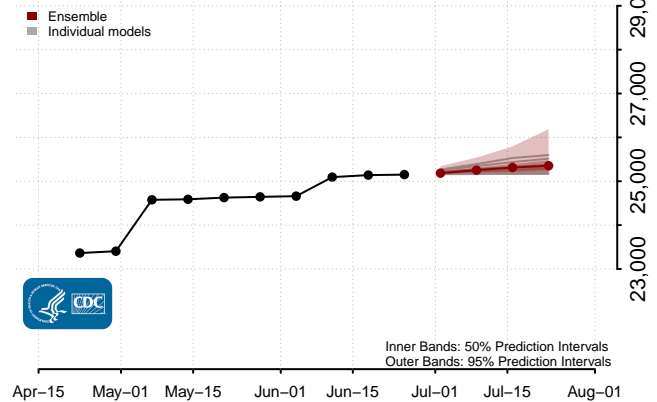
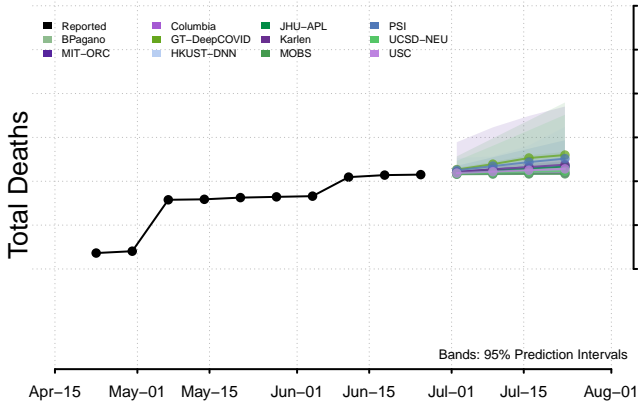
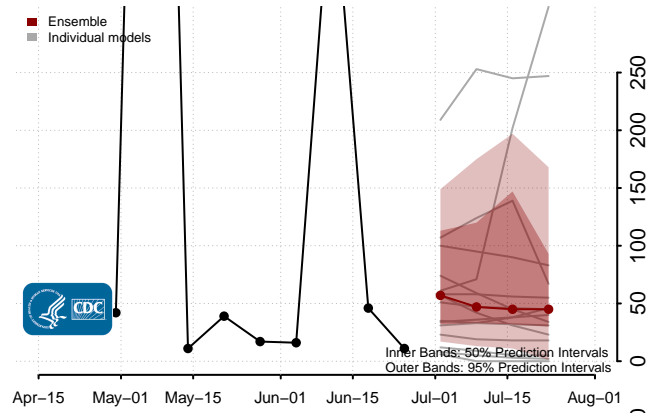
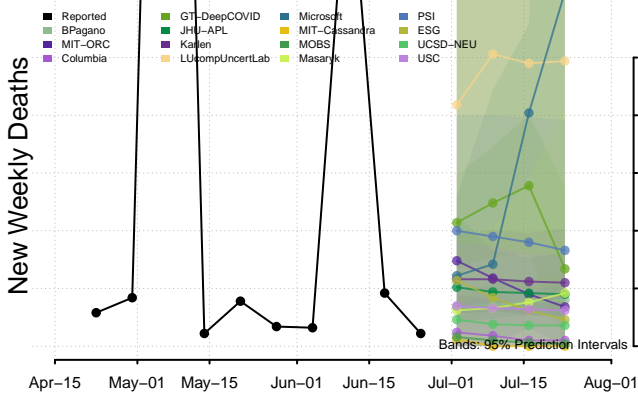
New Jersey



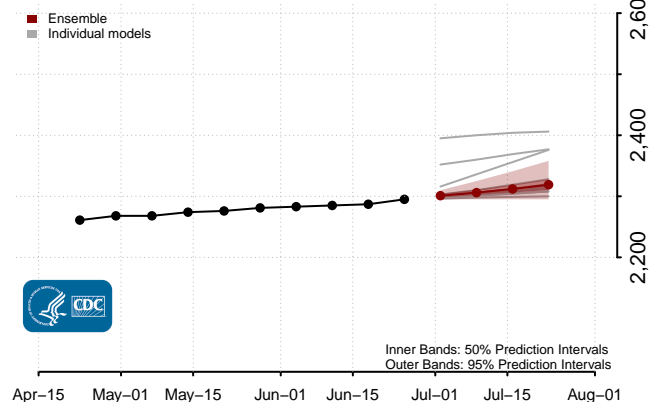
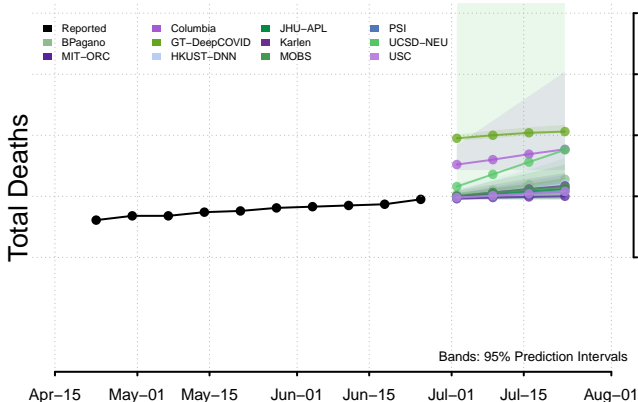
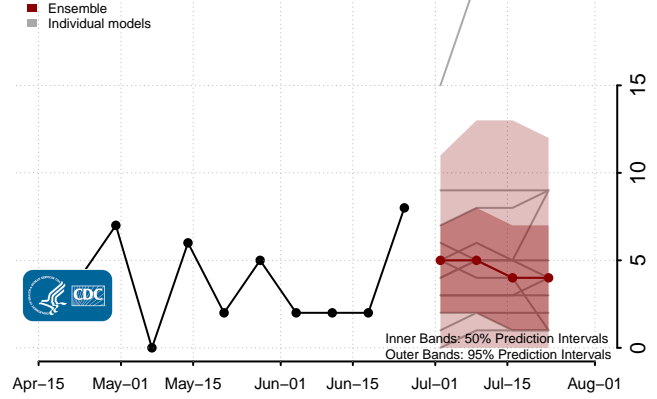
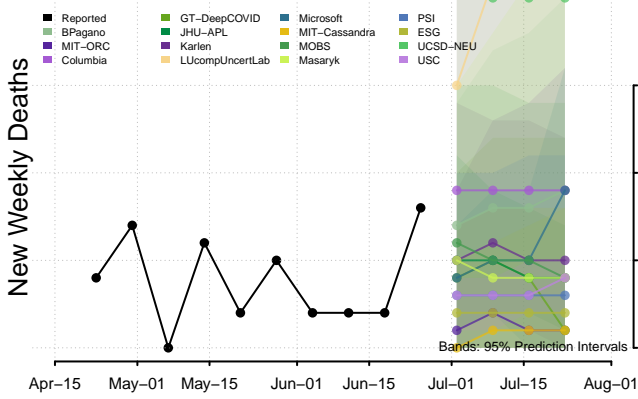


*New weekly deaths may decrease in this location over the next four weeks. For these locations, the ensemble forecast indicates a probability of 0.75 or greater that fewer deaths will be reported in week four of the forecast than in the last reported week.

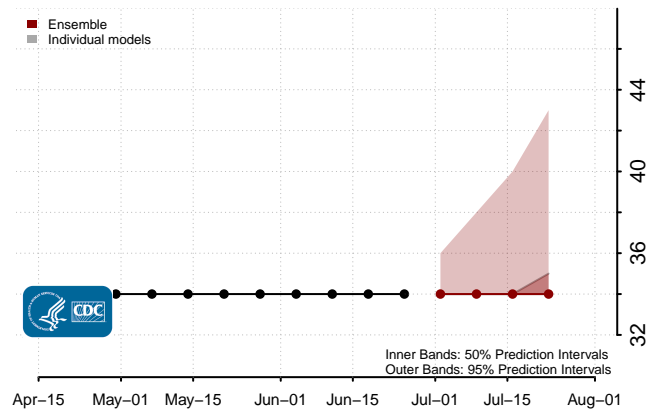
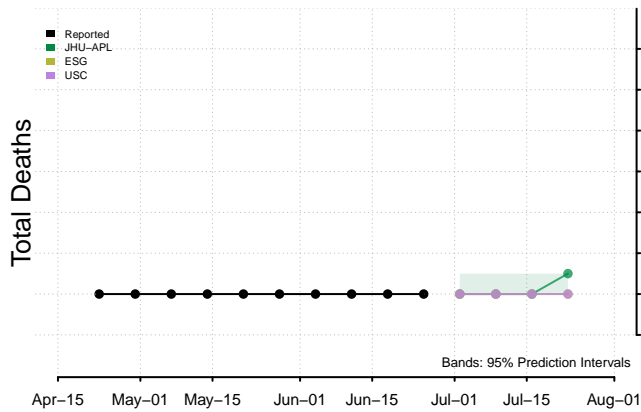
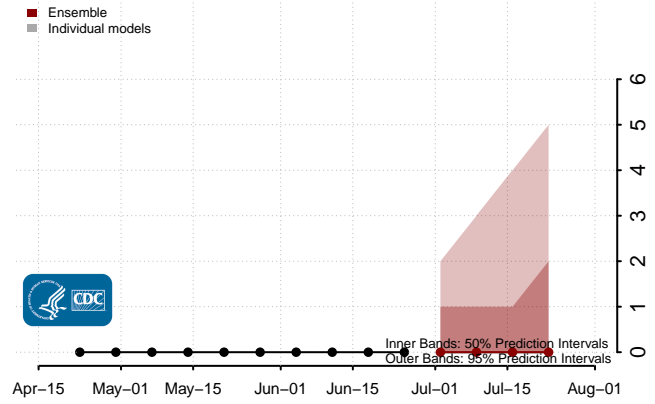
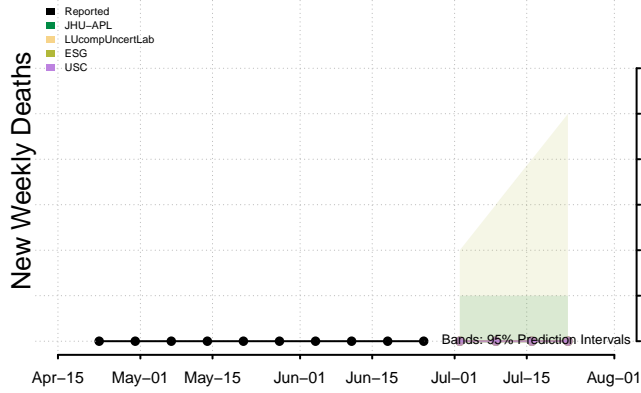
North Carolina



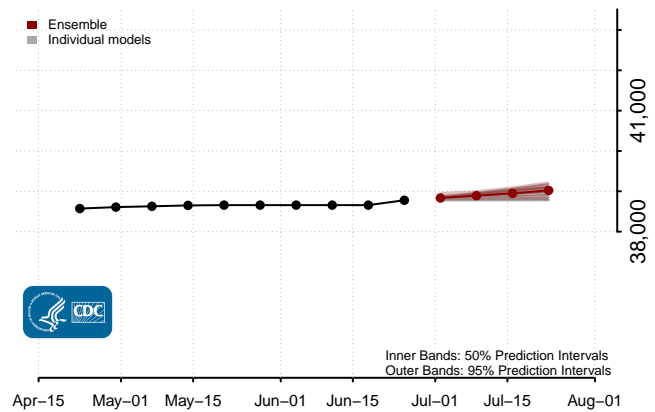
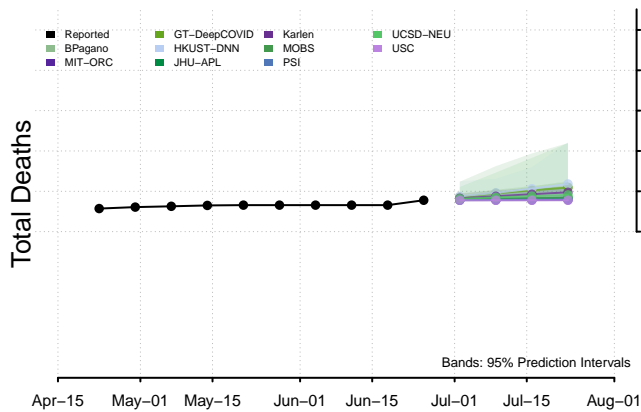
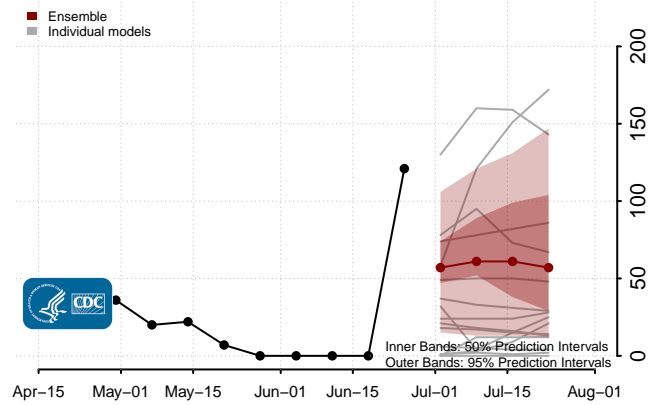
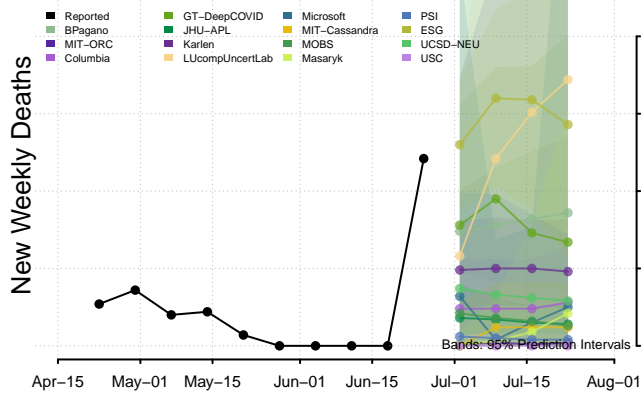
North Dakota



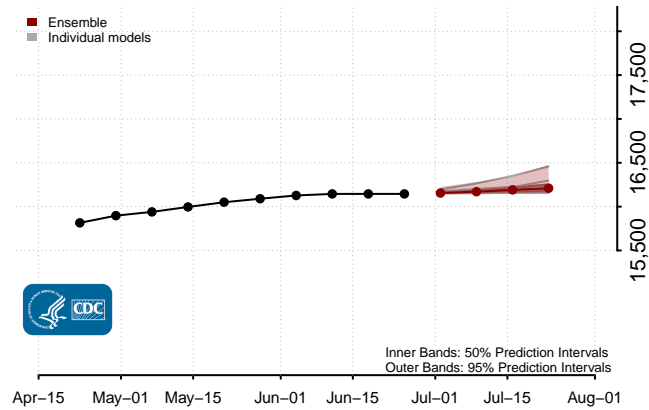
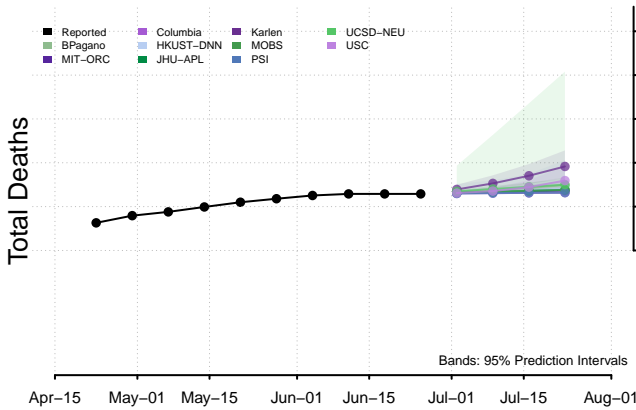
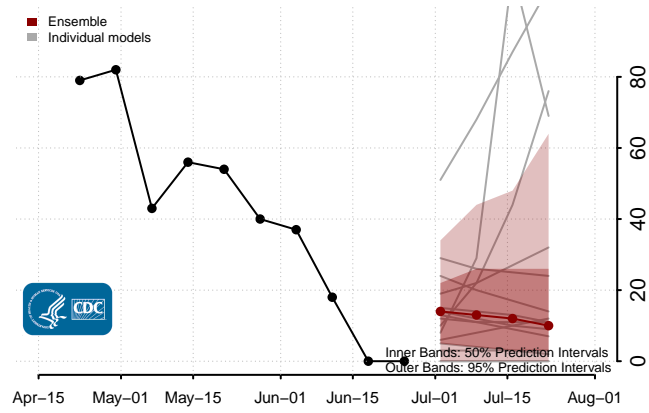
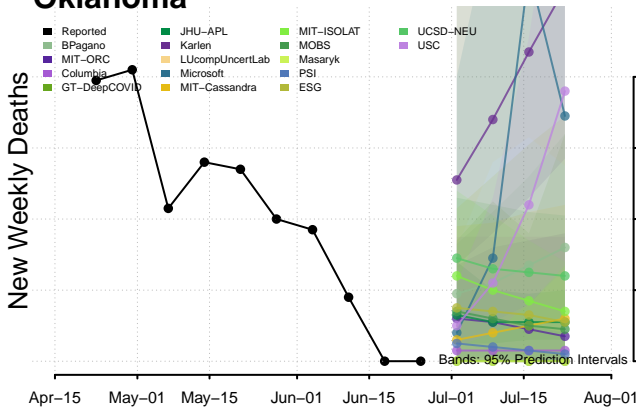
Northern Mariana Islands



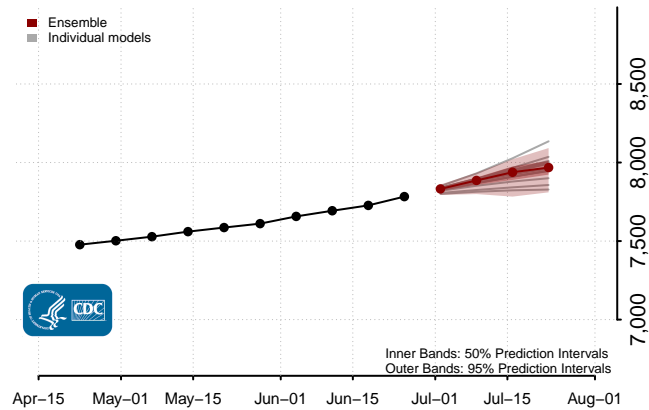
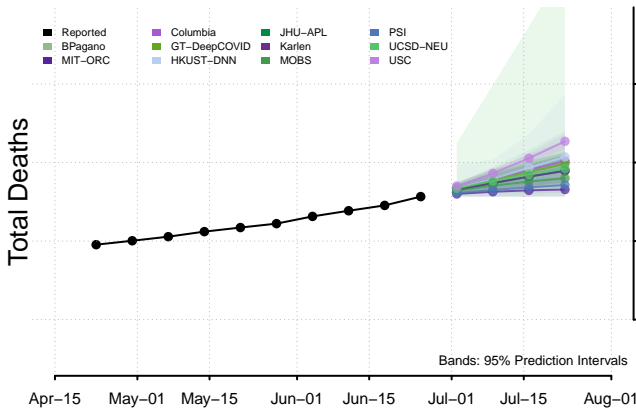
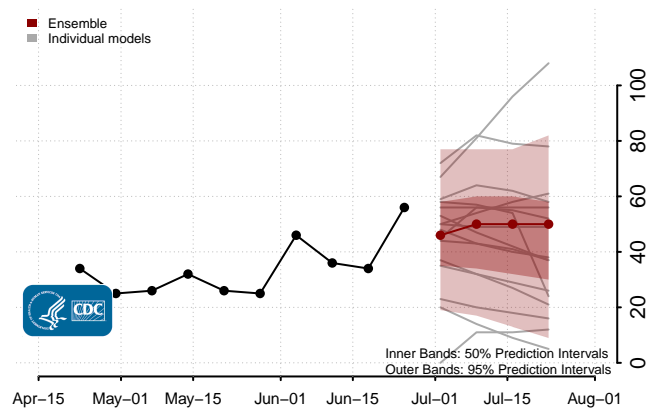
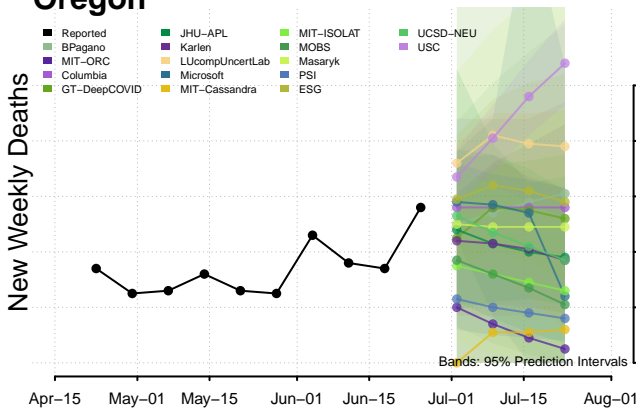
Ohio



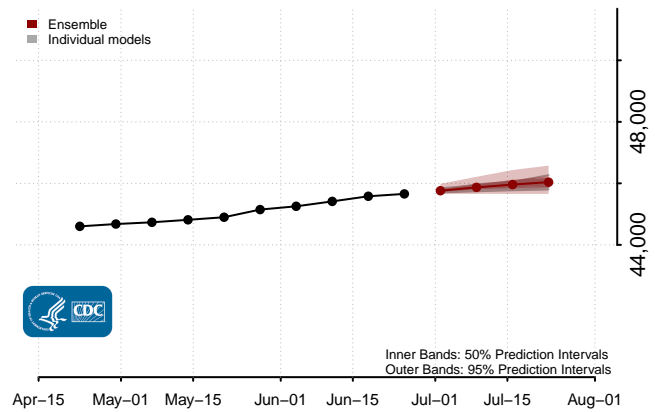
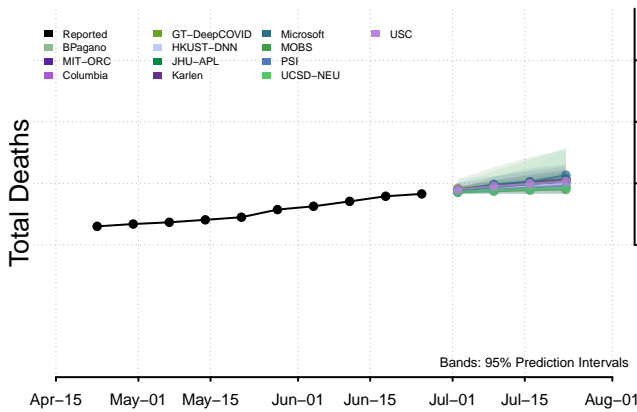
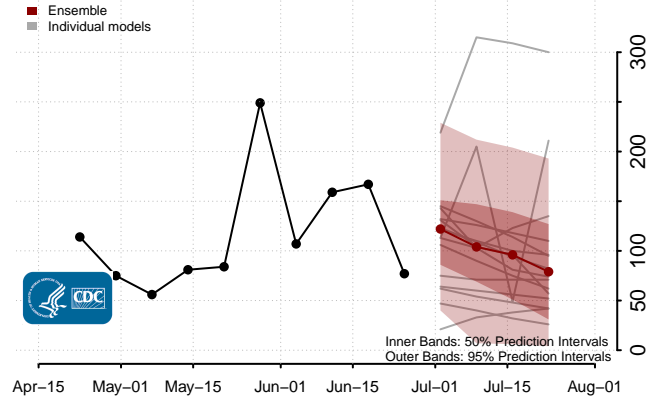
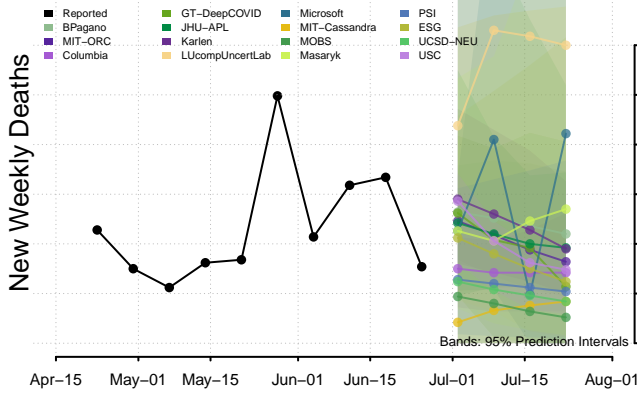
Oklahoma



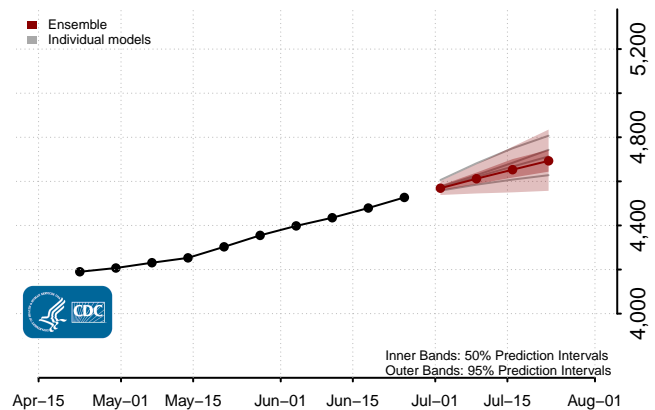
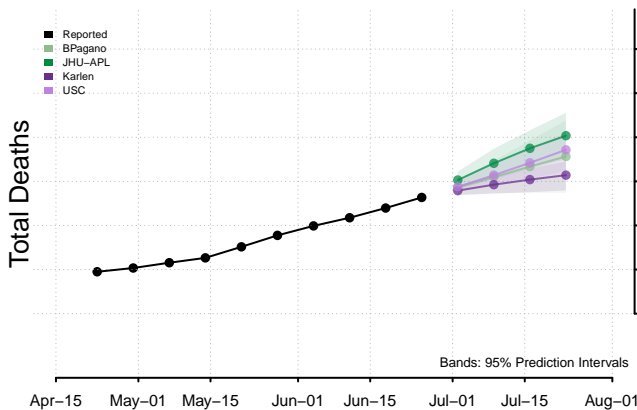
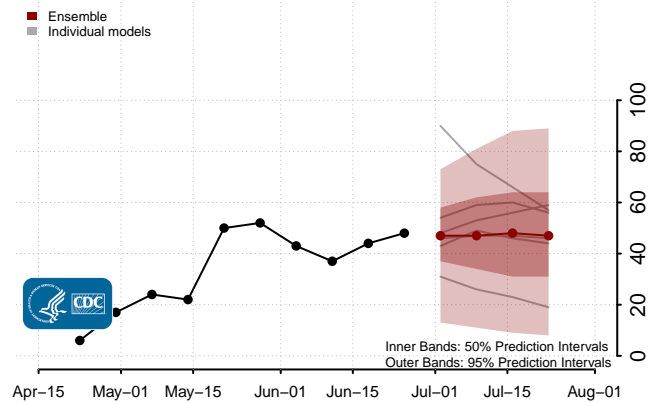
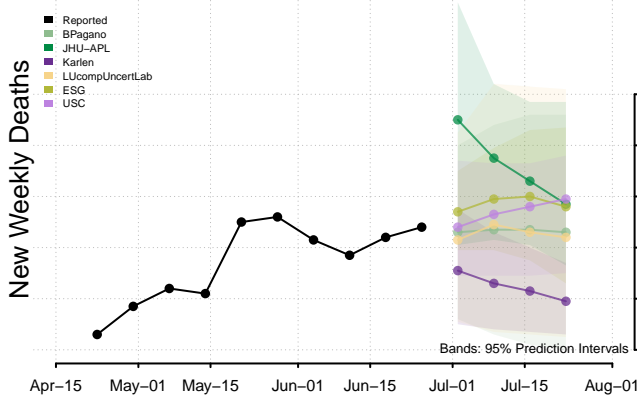
Oregon



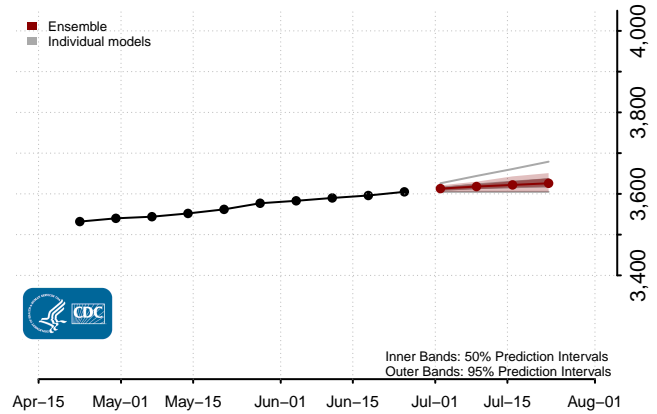
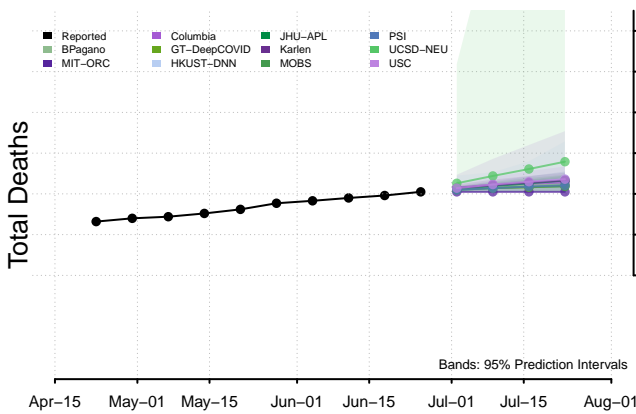
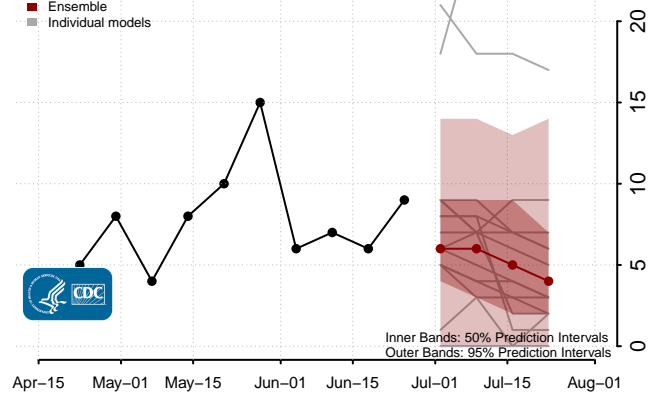
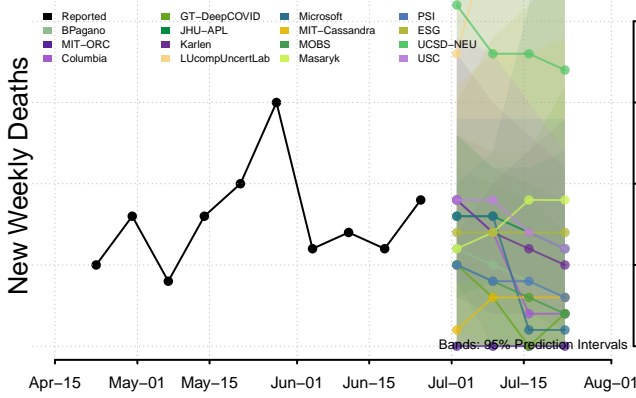
Pennsylvania



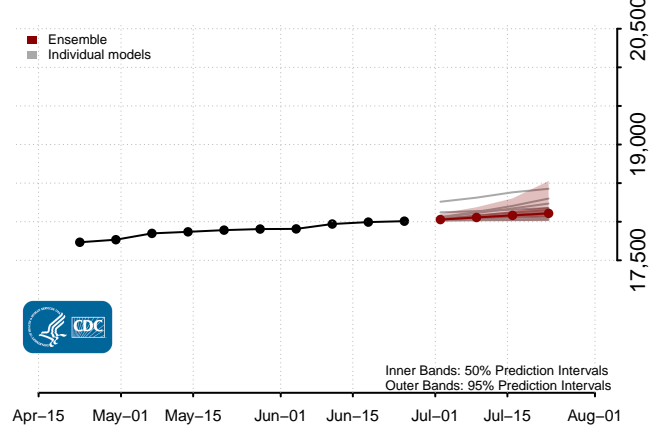
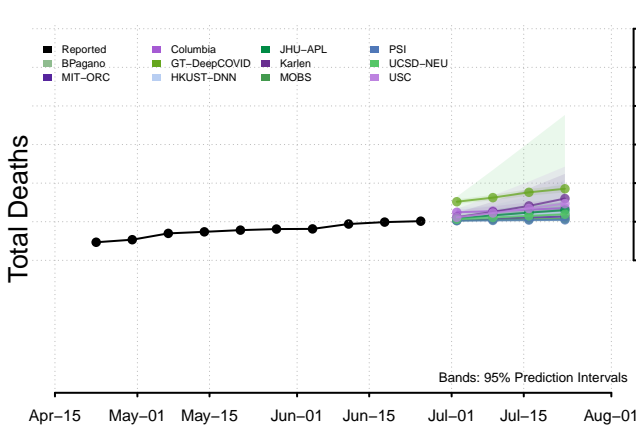
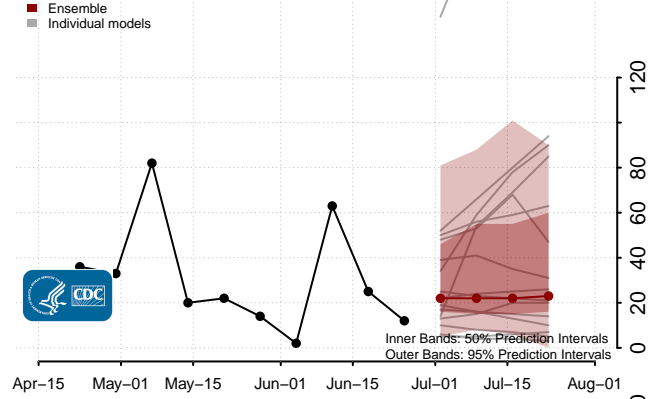
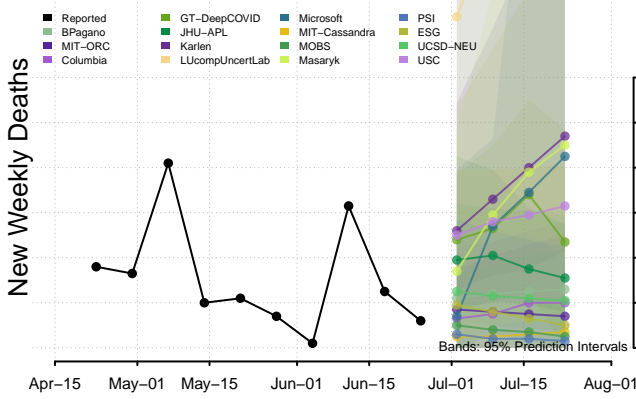
Puerto Rico



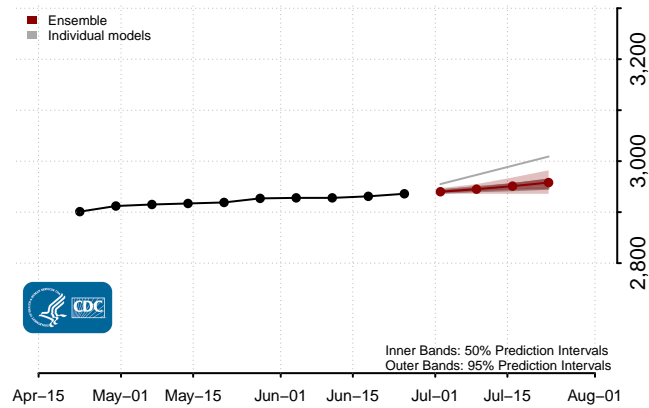
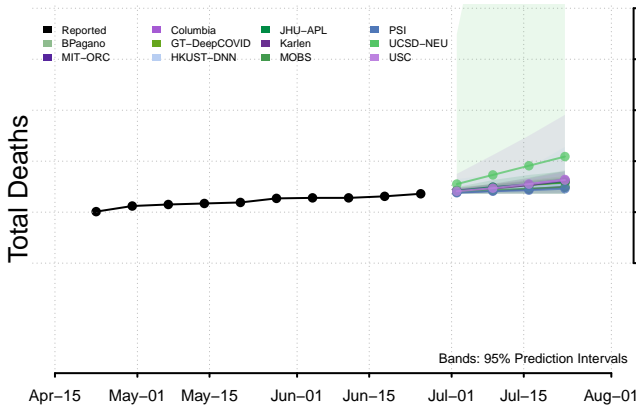
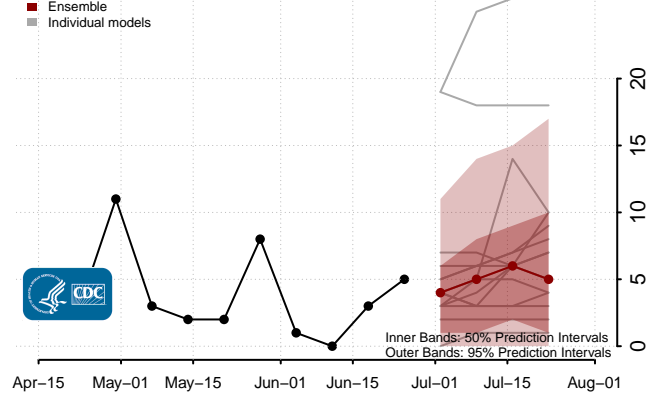
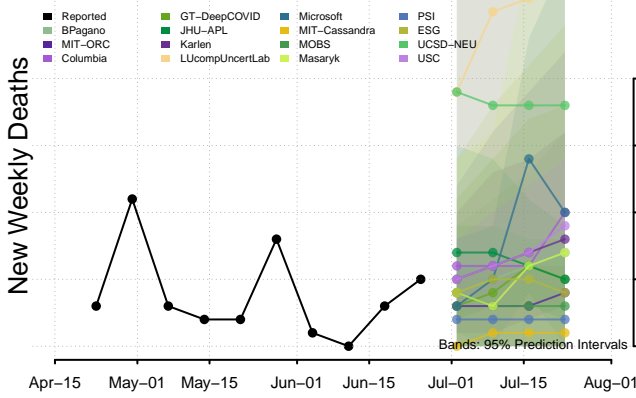
Rhode Island



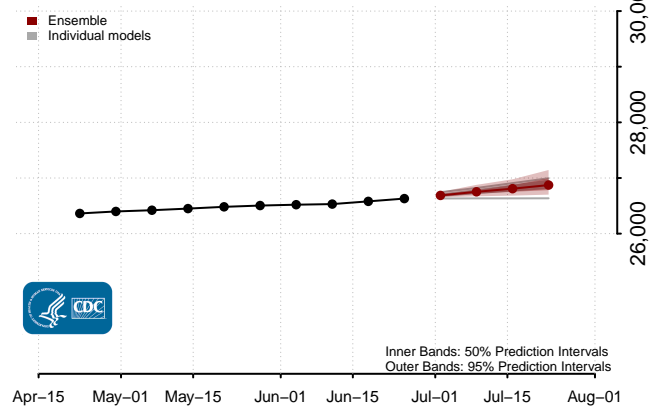
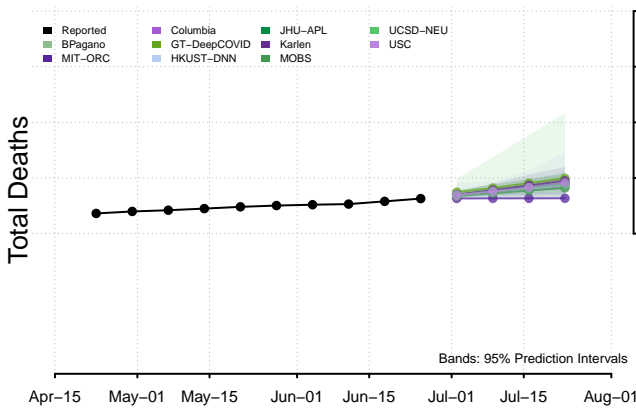
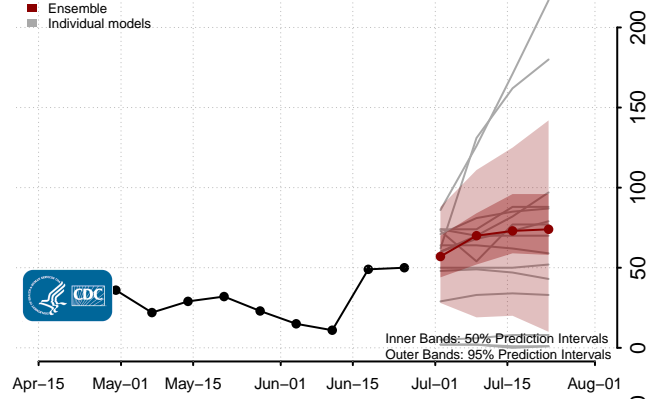
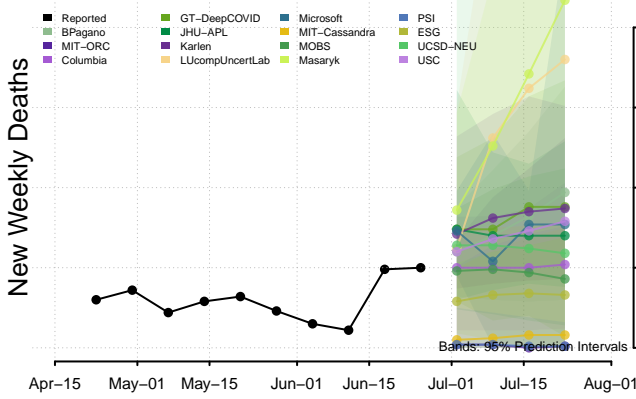
South Carolina



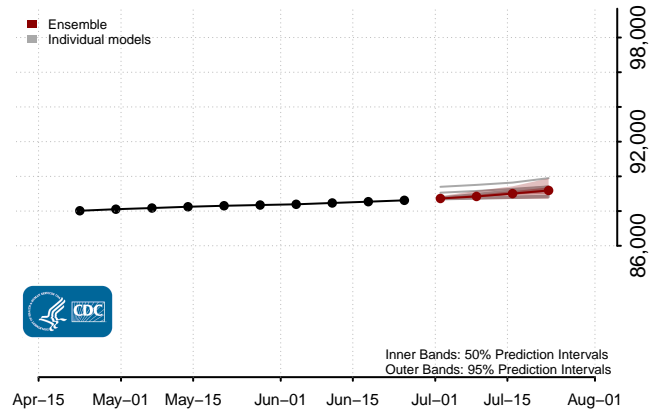
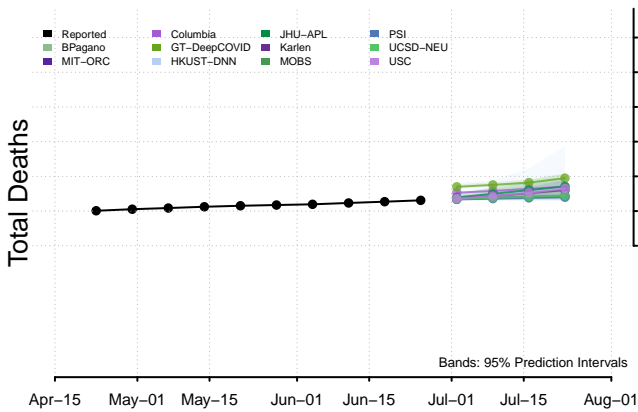
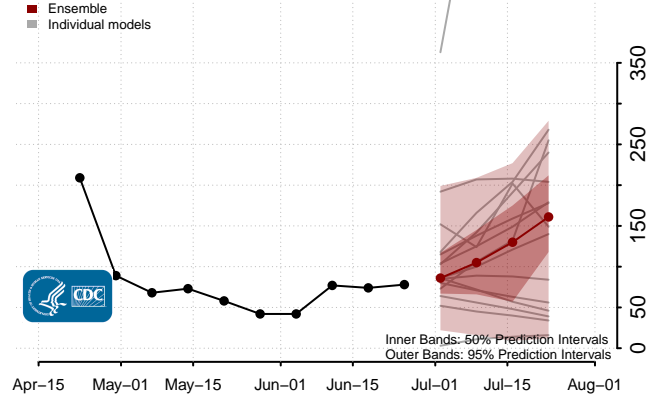
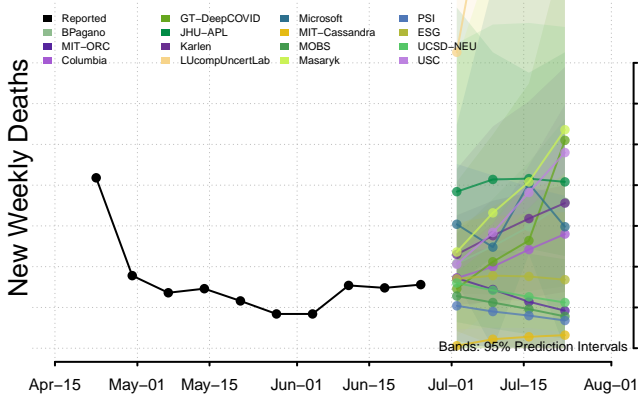
South Dakota



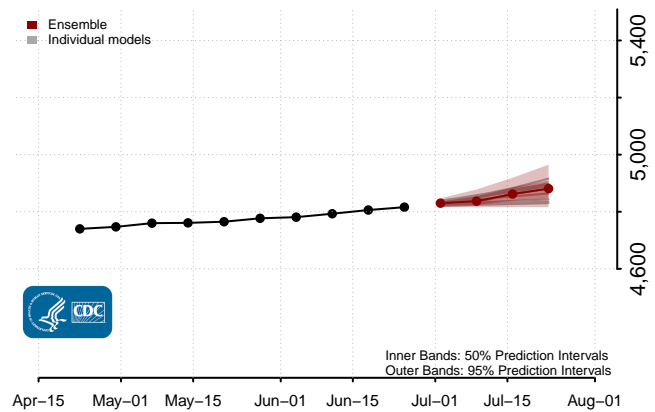
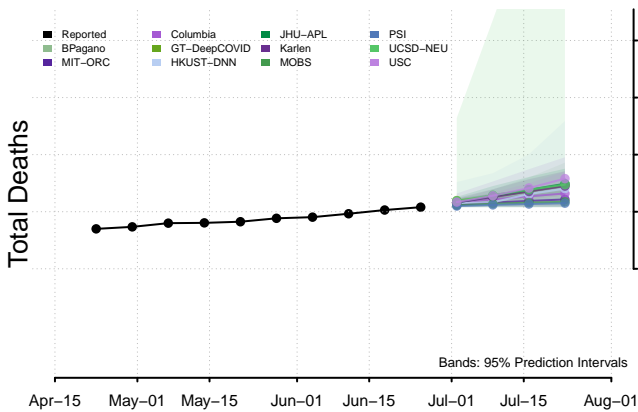
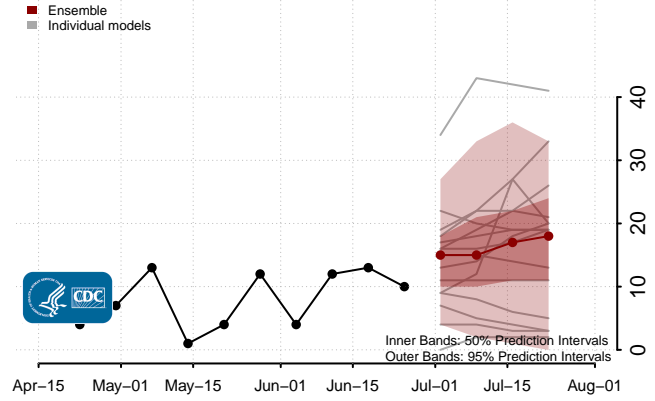
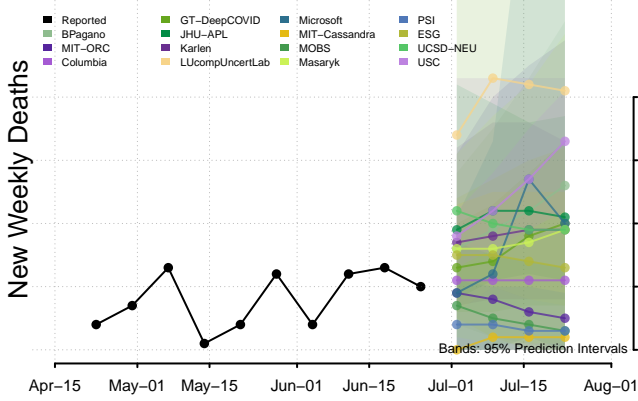
Tennessee



Texas**

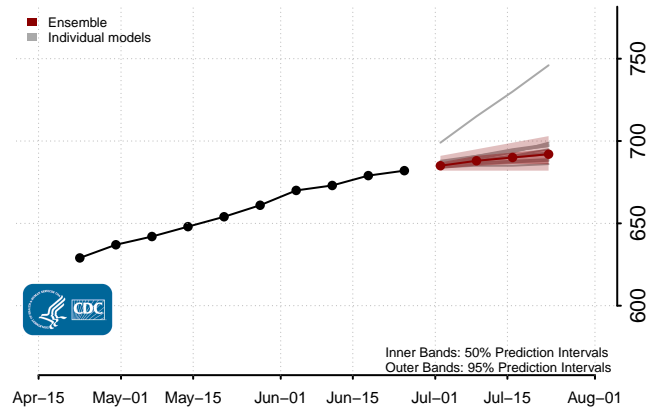
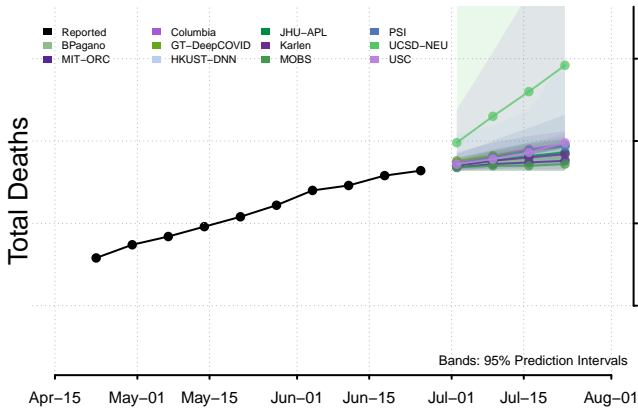
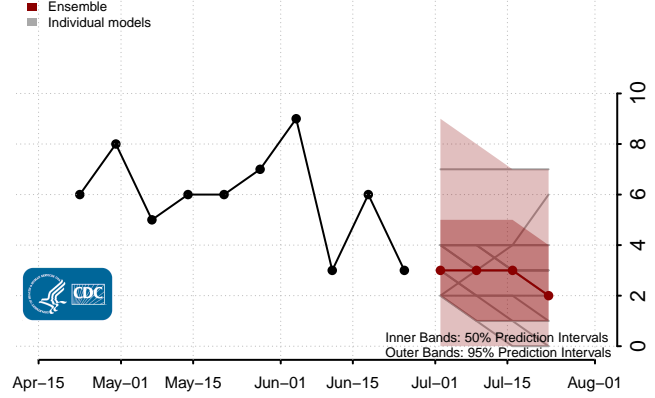
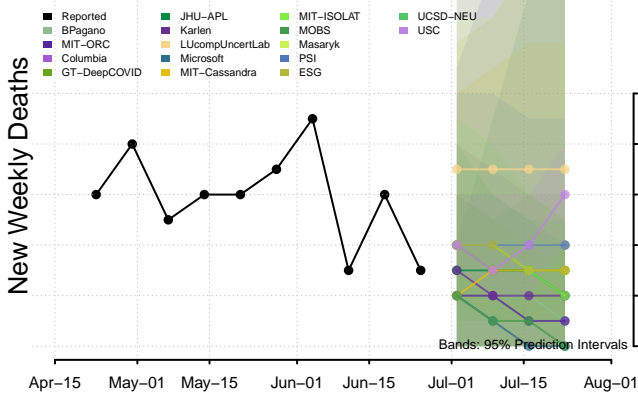


Utah

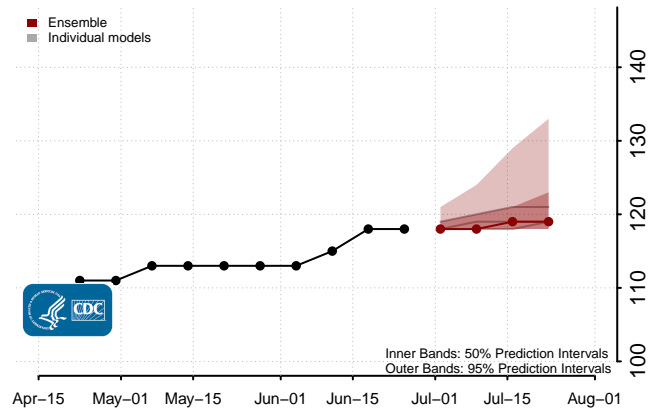
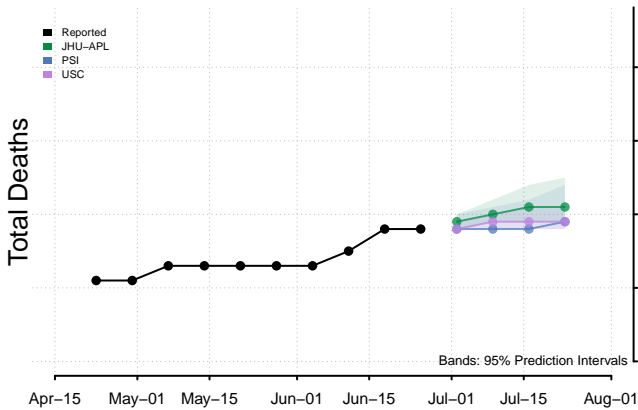
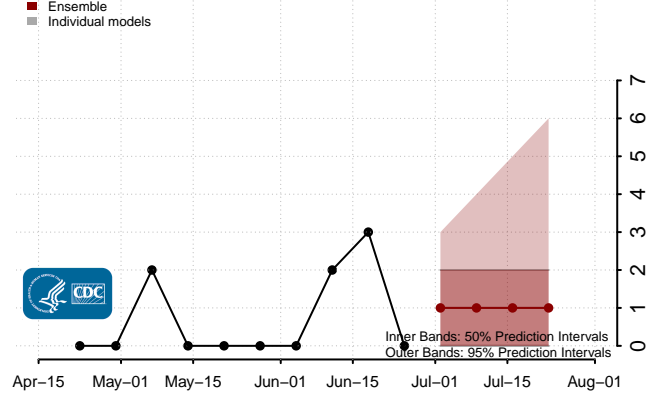
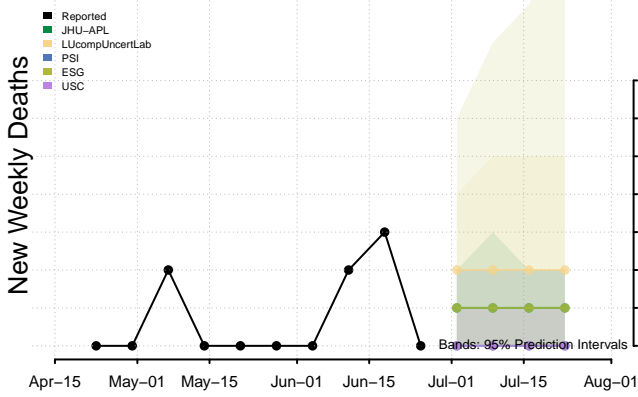


**New weekly deaths may increase in this location over the next four weeks. For these locations, the ensemble forecast indicates a probability of 0.75 or greater that more deaths will be reported in week four of the forecast than in the last reported week.

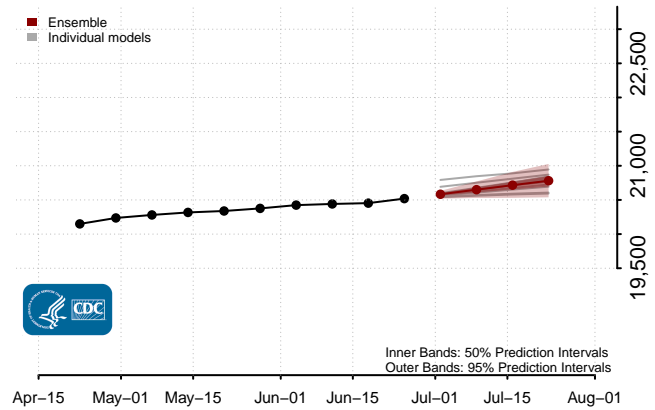
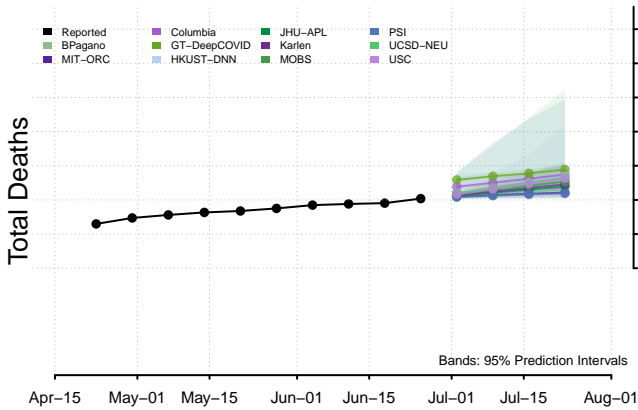
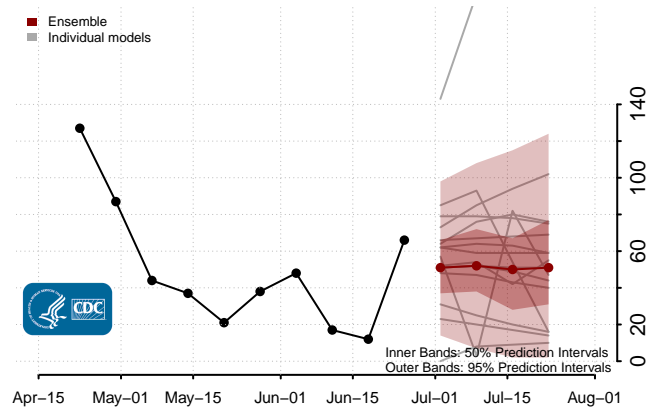
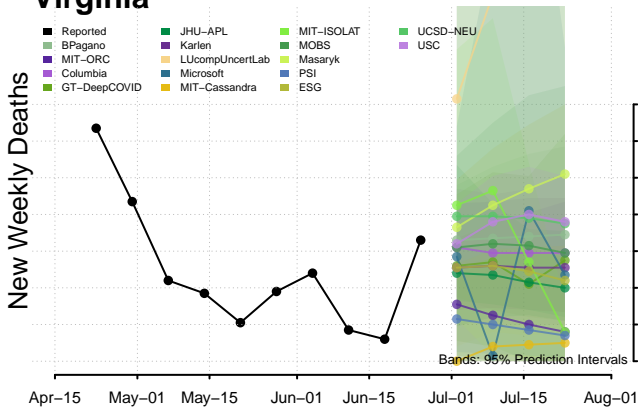
Vermont



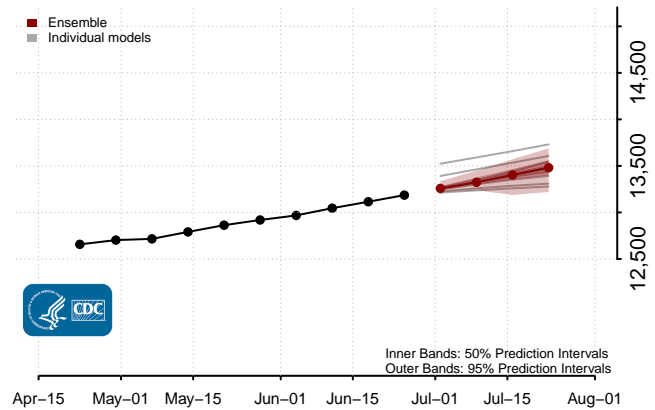
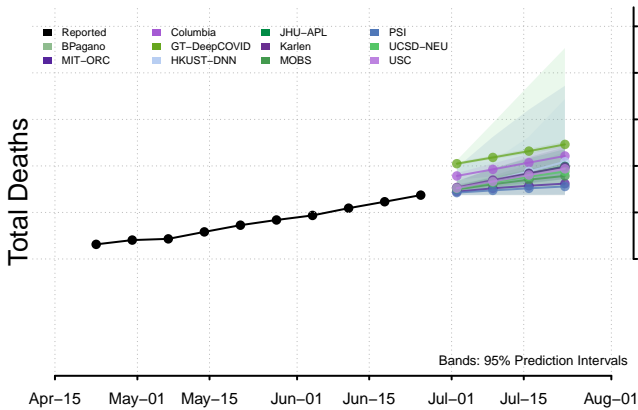
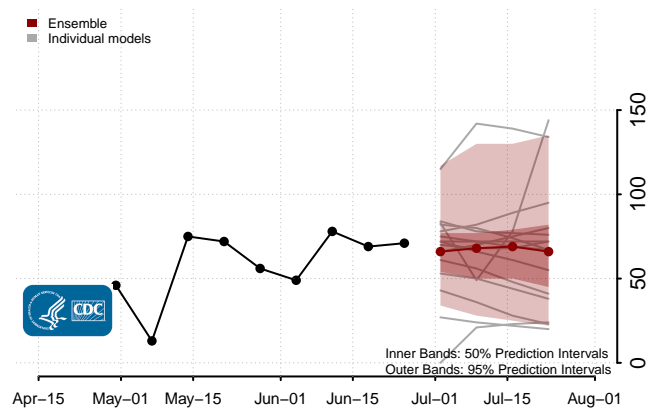
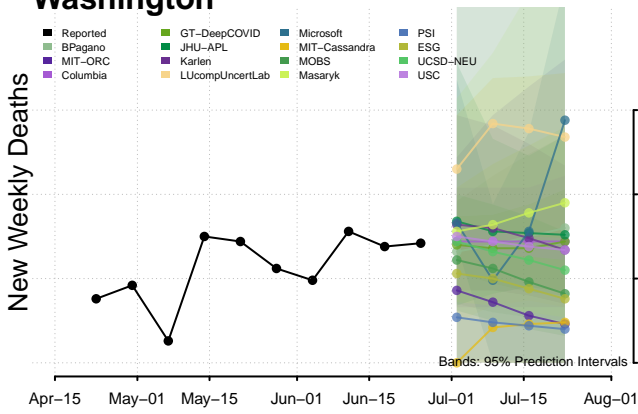
Virgin Islands



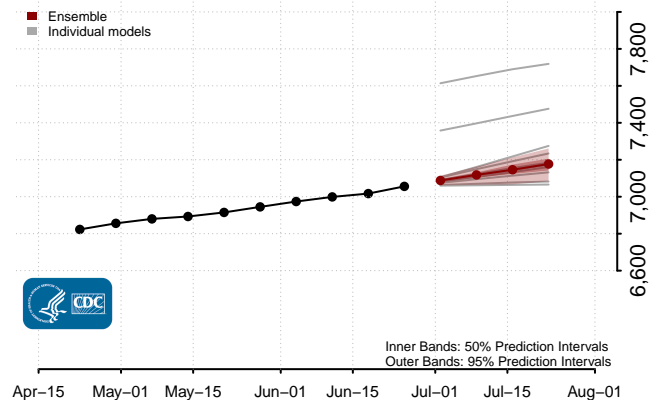
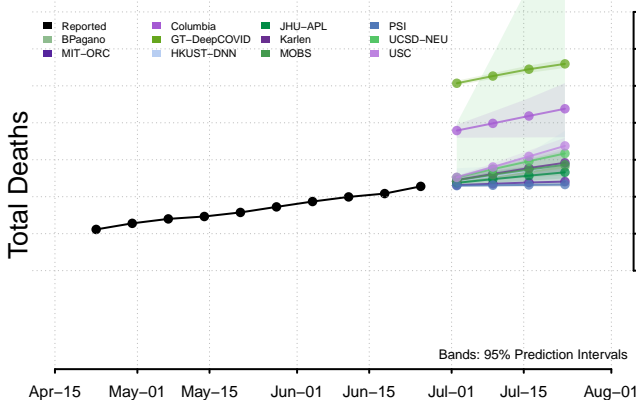
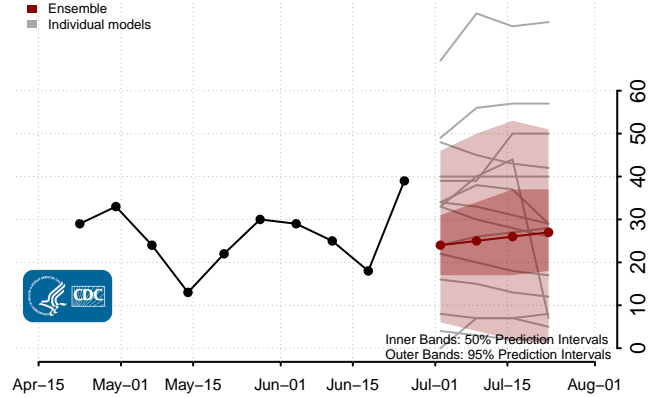
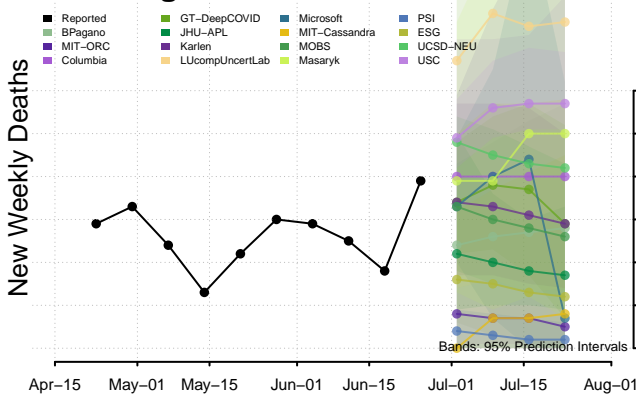
Virginia



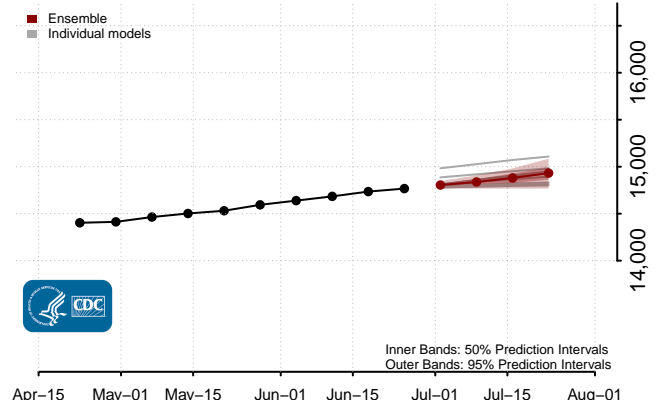
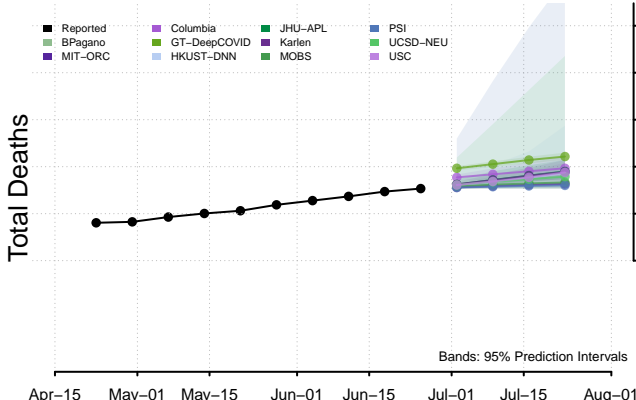
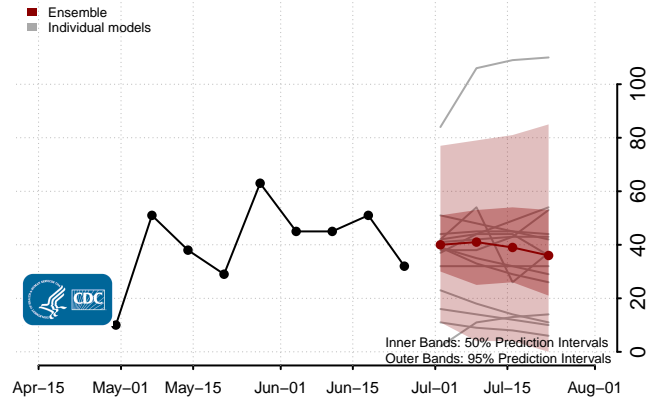
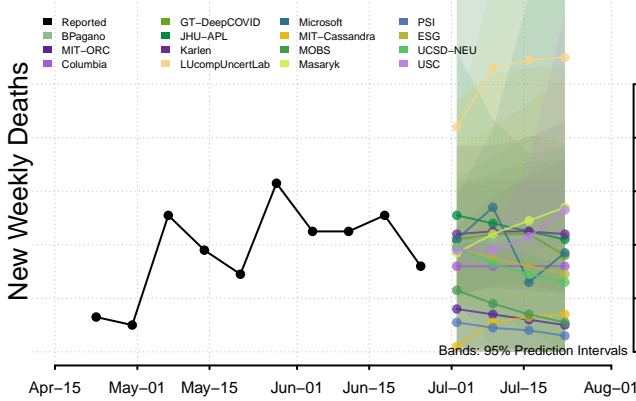
Washington



West Virginia



Wisconsin



Wyoming

