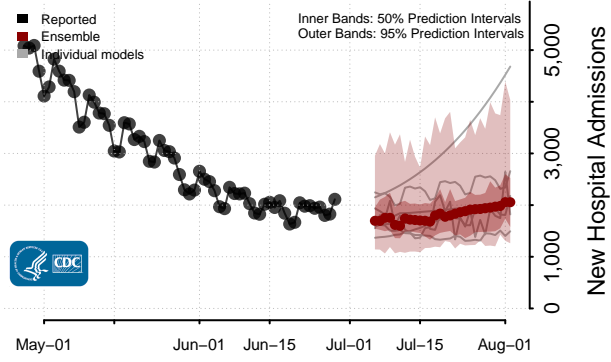
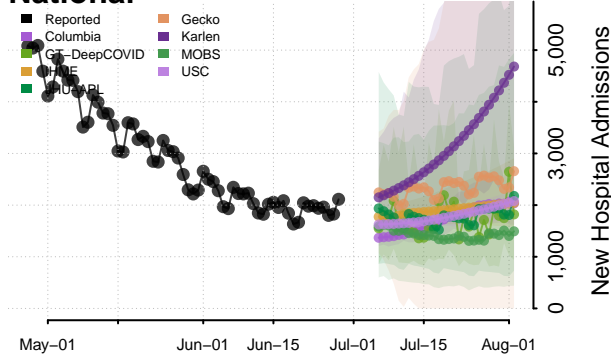
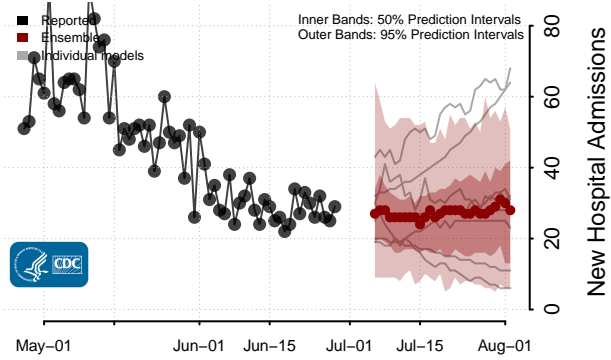
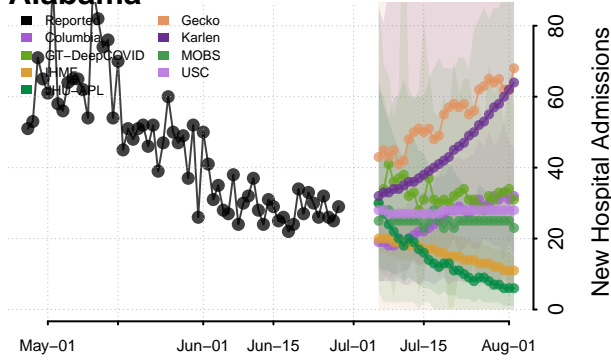


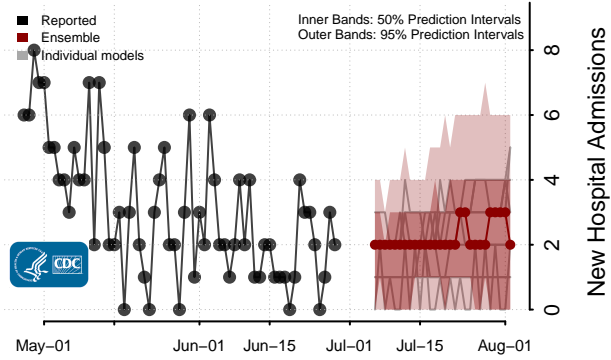
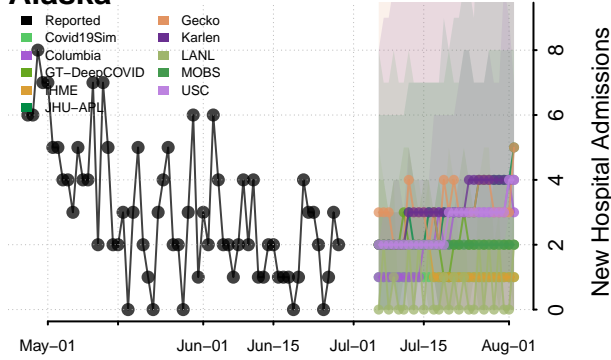
National



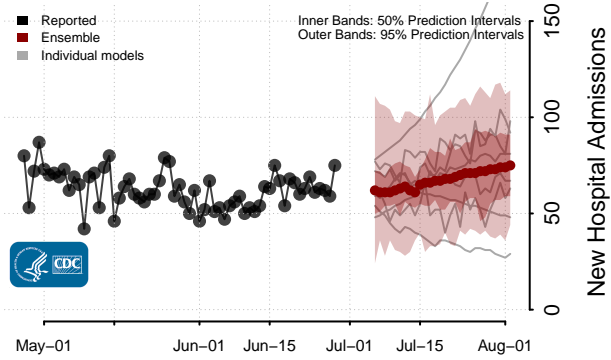
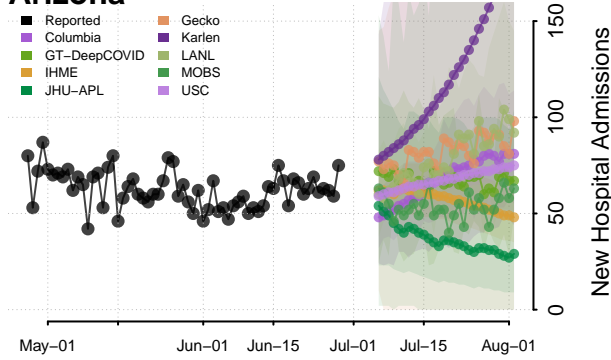
Alabama



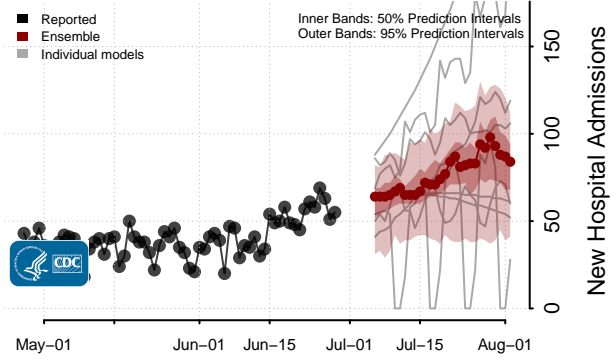
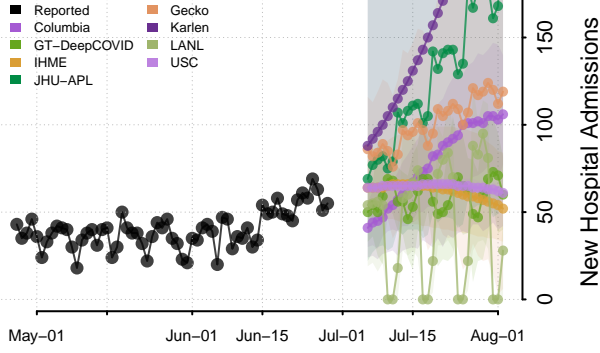
Alaska



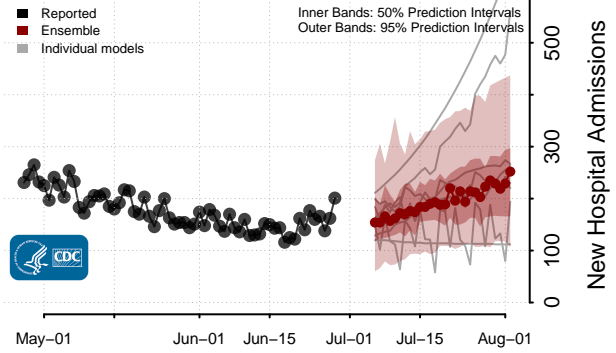
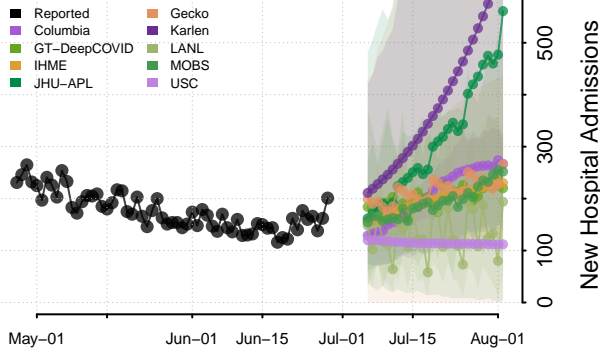
Arizona



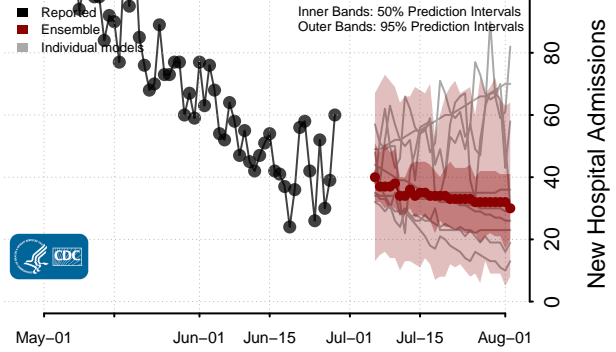
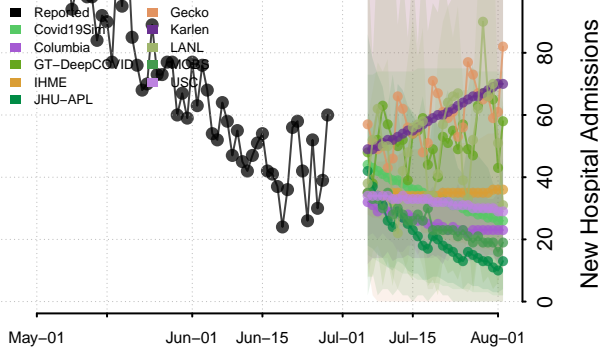
Arkansas**



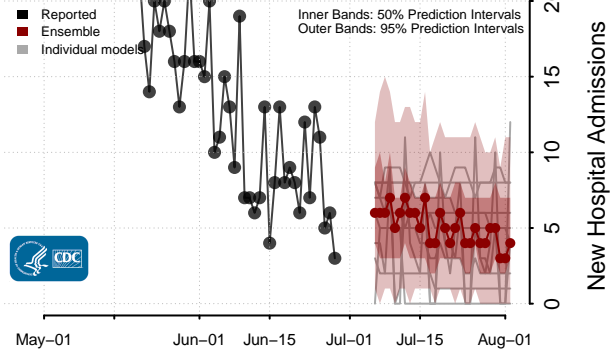
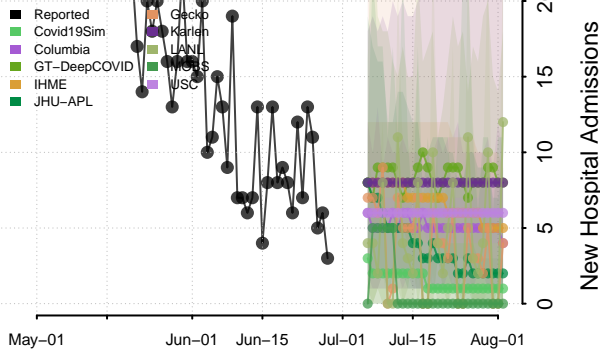
California**



Colorado

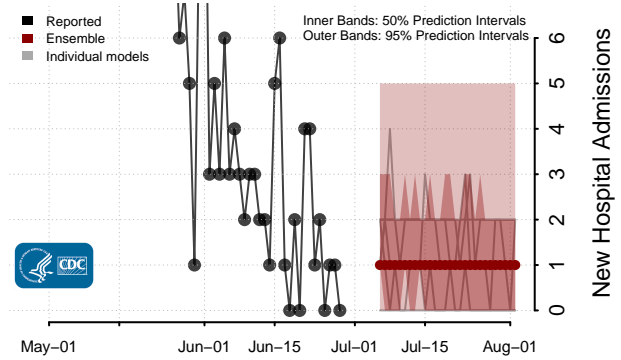
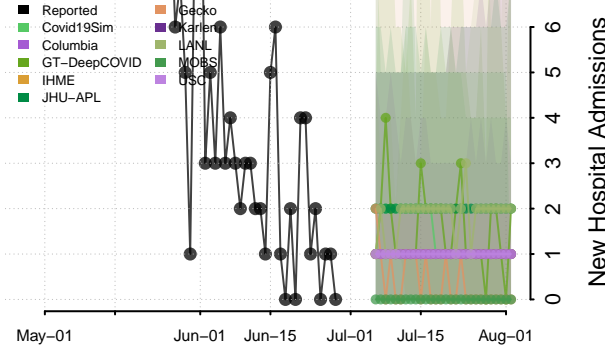


Connecticut

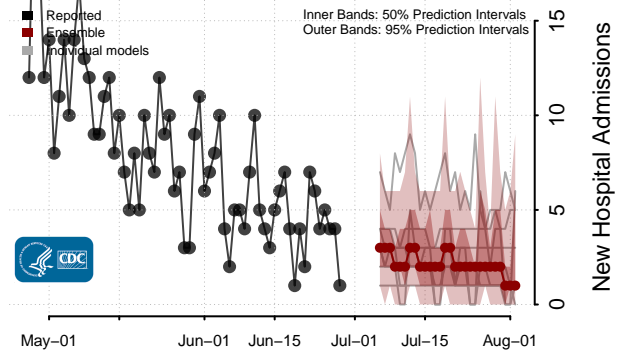
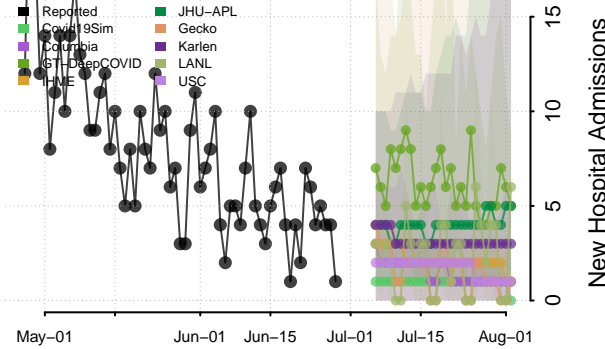


**New daily confirmed COVID-19 hospital admissions may increase in this location over the next four weeks. For these locations, the ensemble forecast indicates a median daily probability of 0.75 or greater that more hospital admissions will be reported in the last seven days of the forecast than the median in the last seven days of reported data.

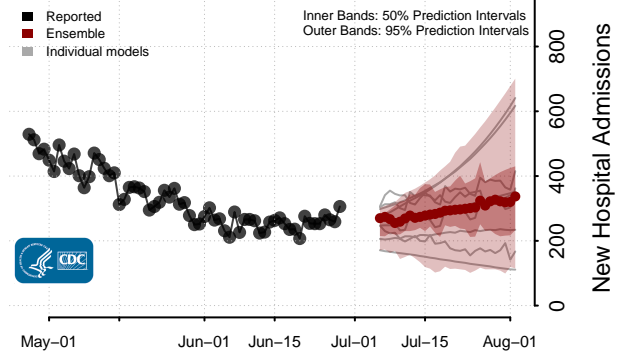
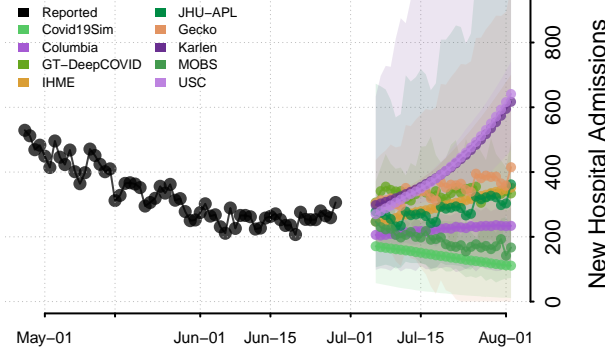
Delaware



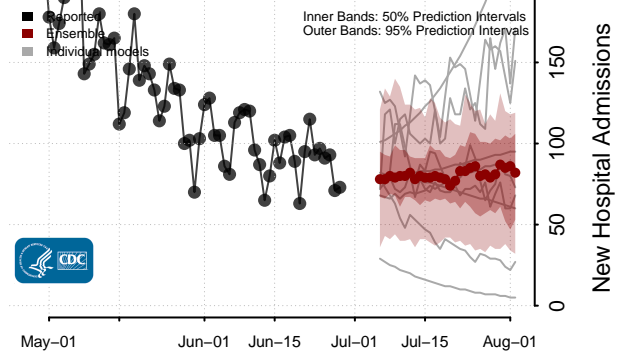
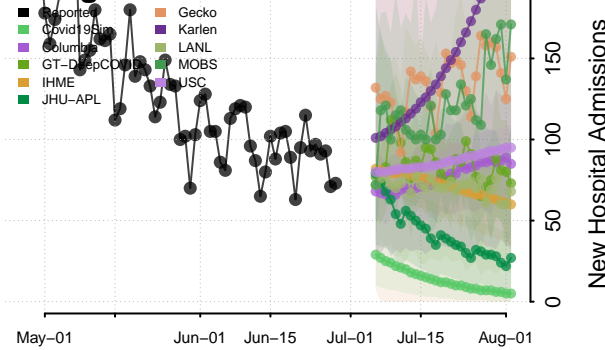
District of Columbia



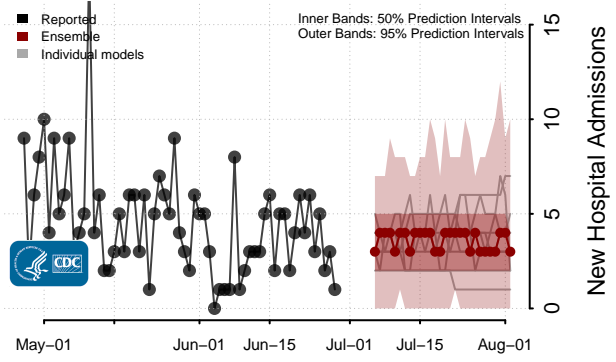
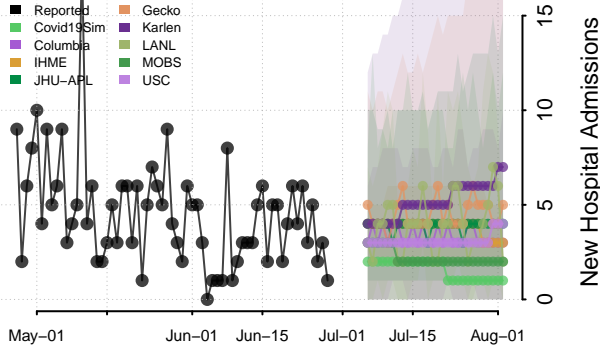
Florida



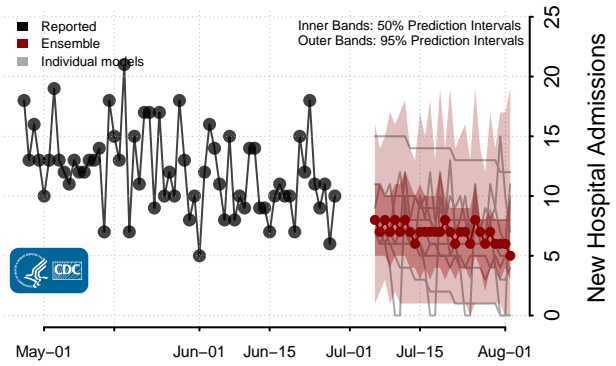
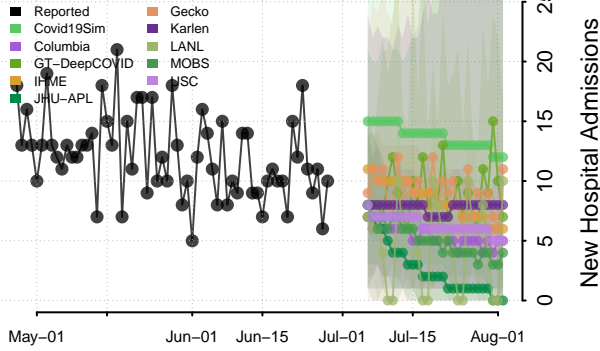
Georgia



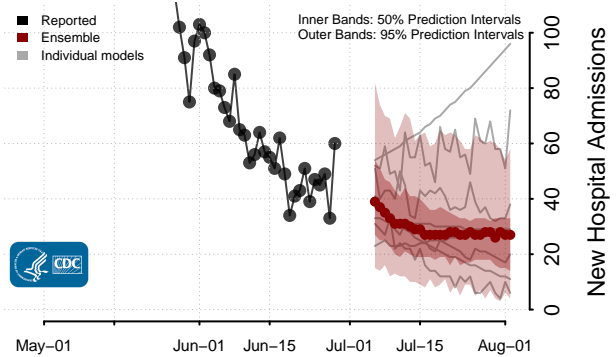
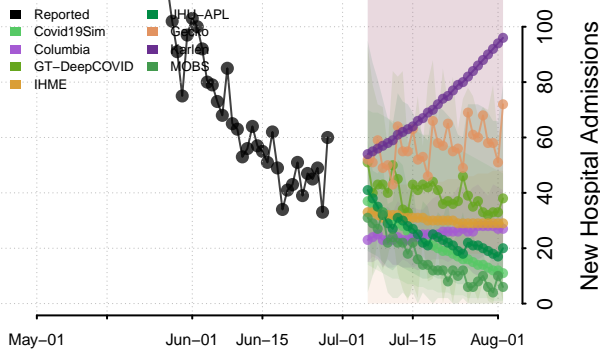
Hawaii



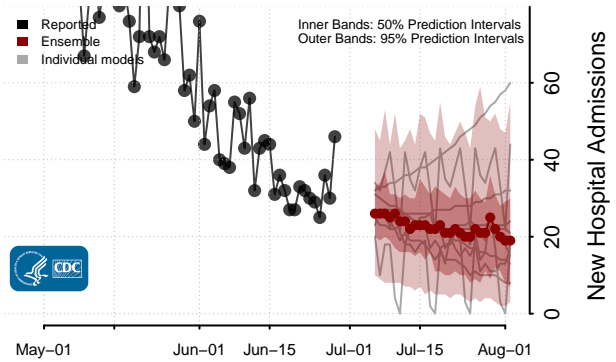
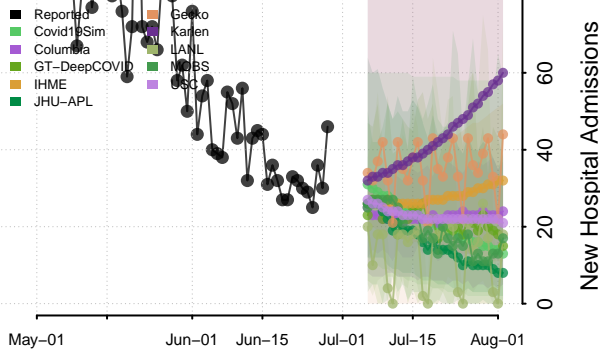
Idaho



Illinois*

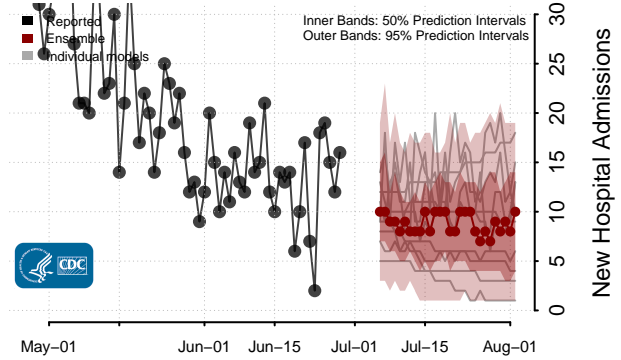
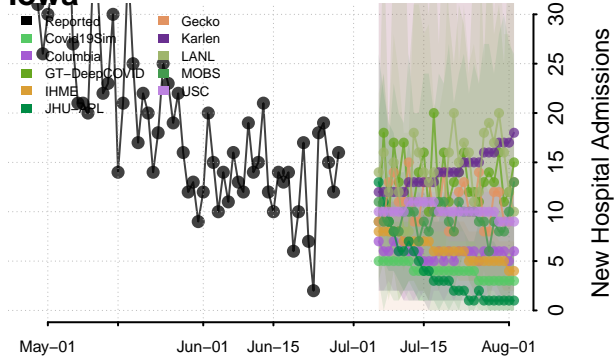


Indiana

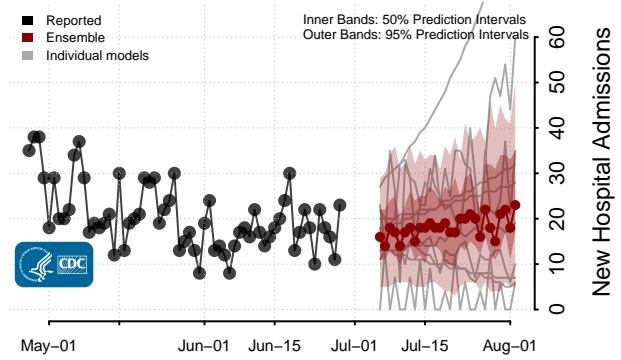
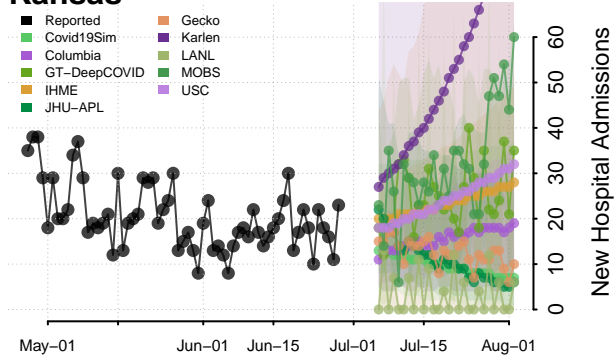


*New daily confirmed COVID-19 hospital admissions may decrease in this location over the next four weeks. For these locations, the ensemble forecast indicates a median daily probability of 0.75 or greater that fewer hospital admissions will be reported in the last seven days of the forecast than the median in the last seven days of reported data.

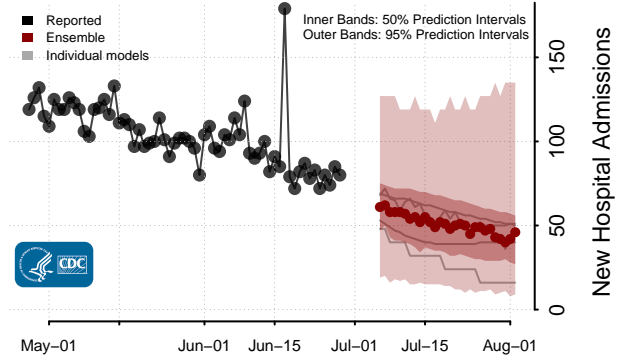
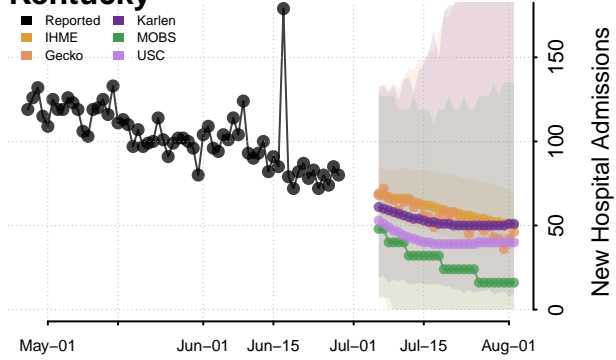
Iowa



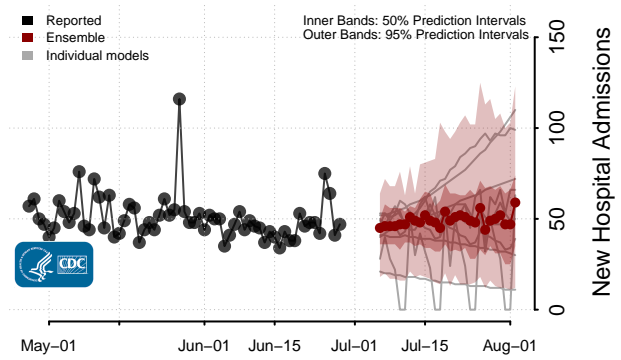
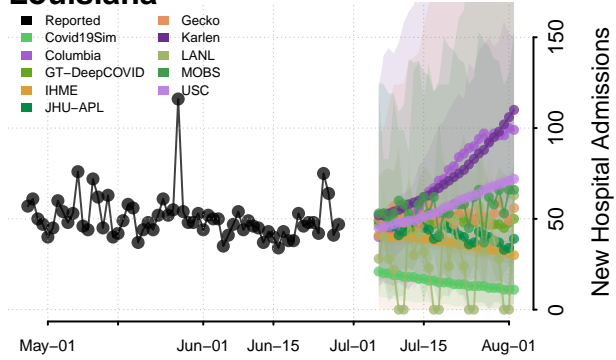
Kansas



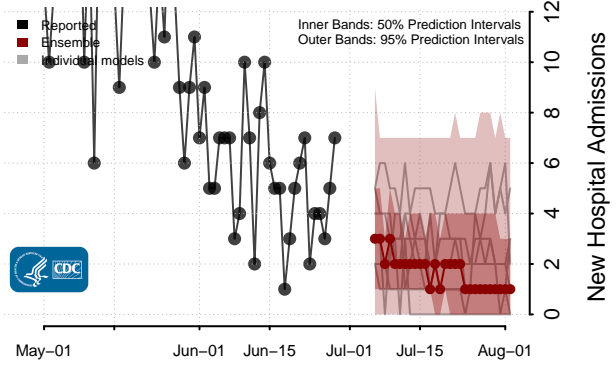
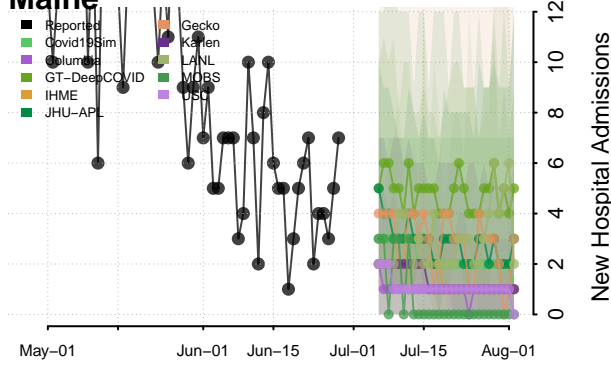
Kentucky



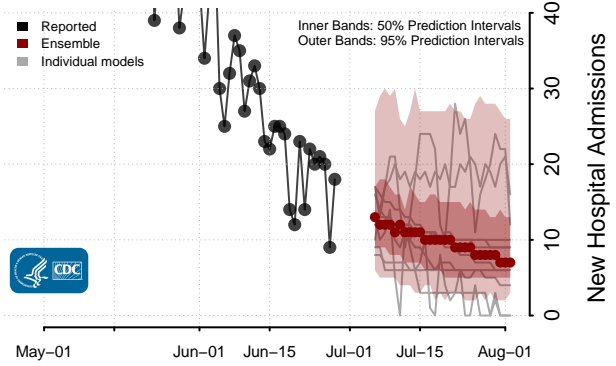
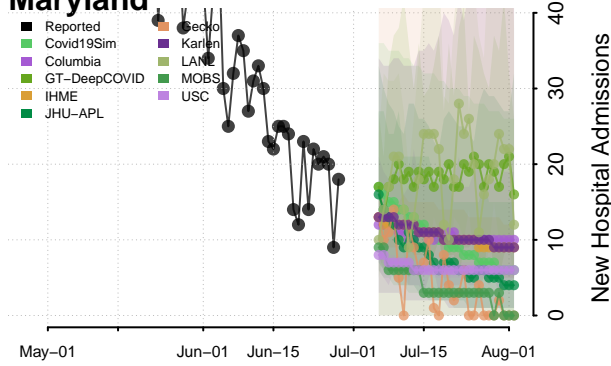
Louisiana



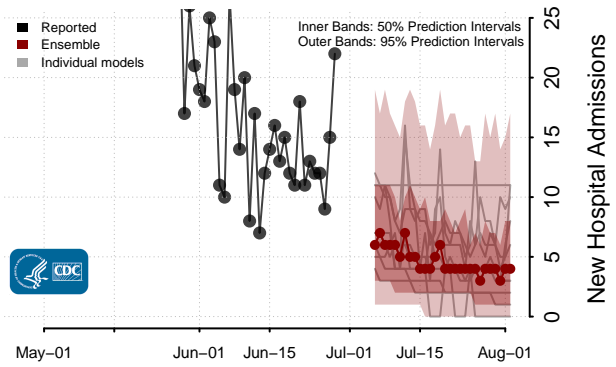
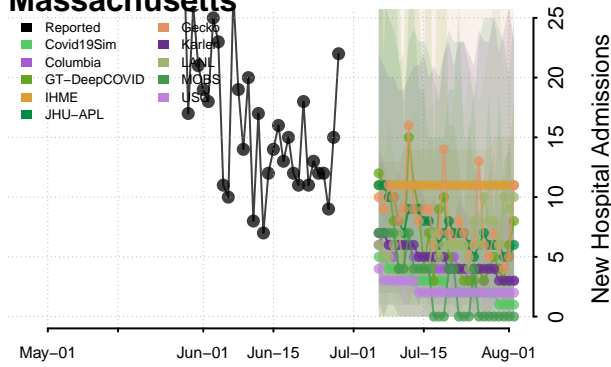
Maine



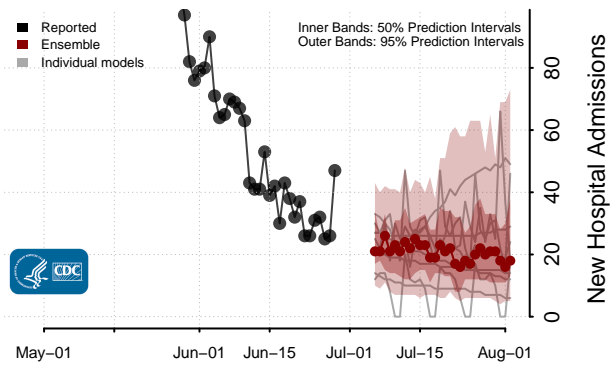
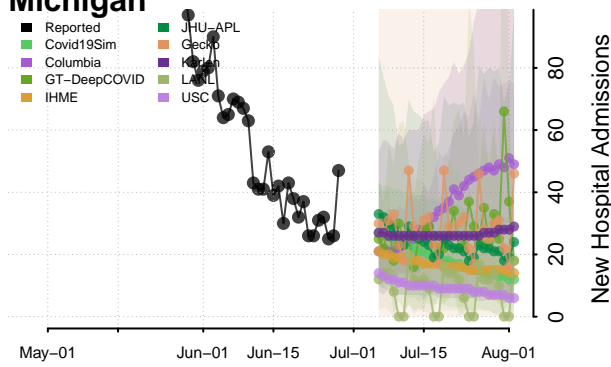
Maryland*



Massachusetts

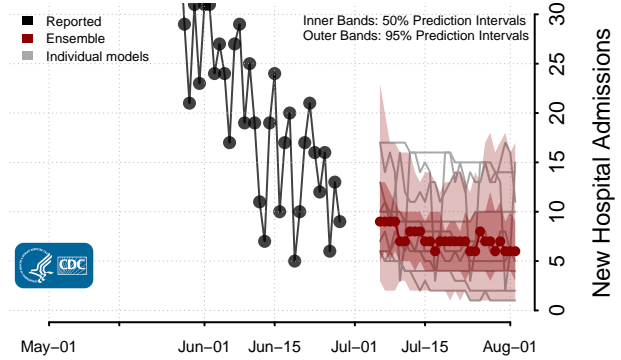
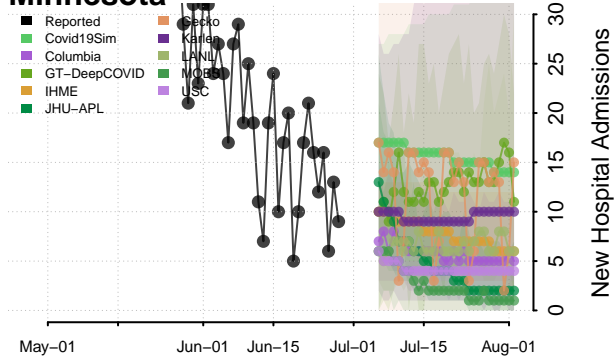


Michigan

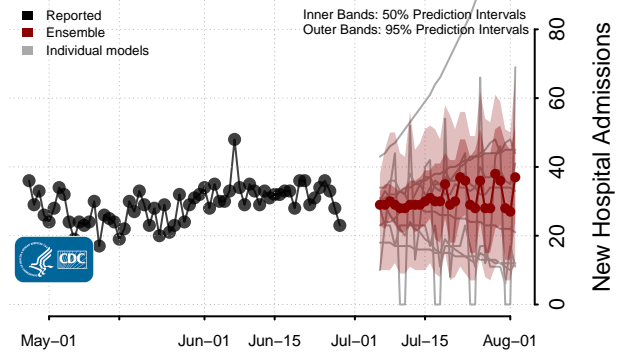
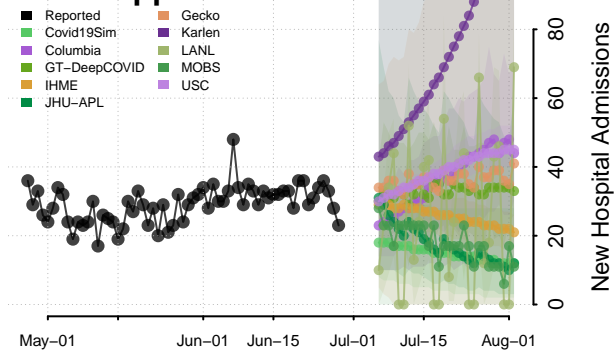


*New daily confirmed COVID-19 hospital admissions may decrease in this location over the next four weeks. For these locations, the ensemble forecast indicates a median daily probability of 0.75 or greater that fewer hospital admissions will be reported in the last seven days of the forecast than the median in the last seven days of reported data.

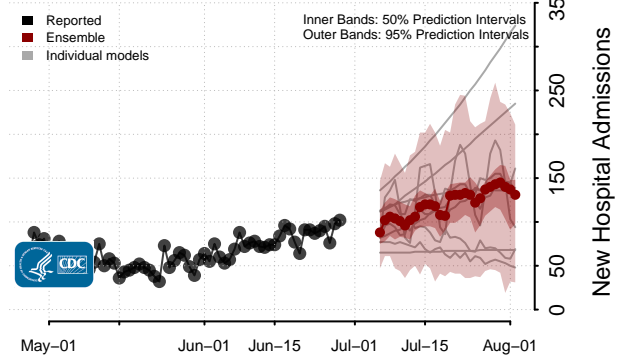
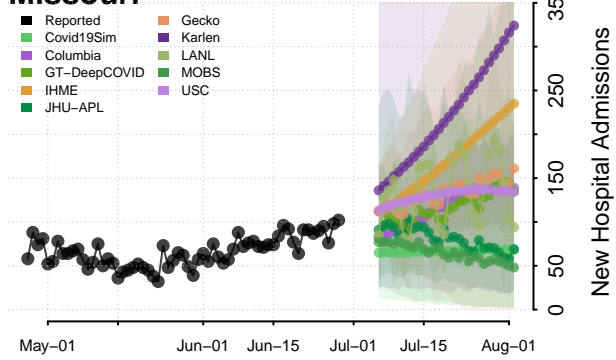
Minnesota



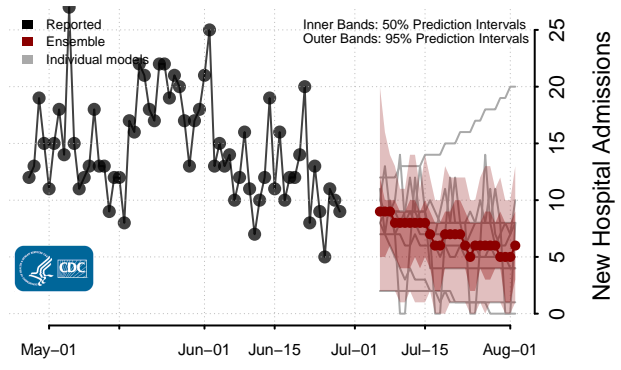
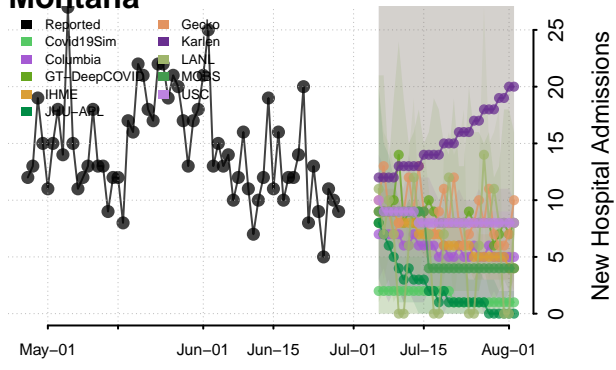
Mississippi



Missouri**

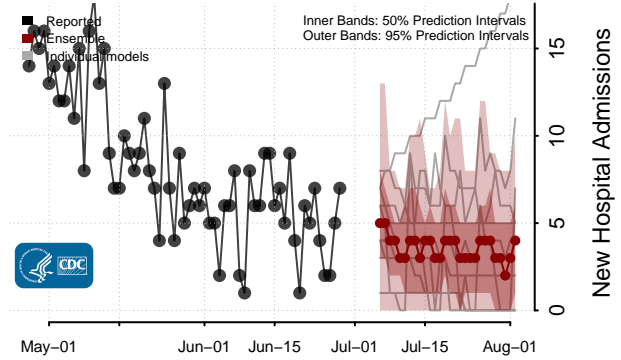
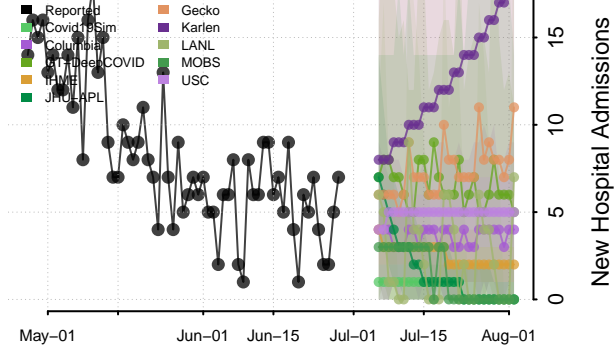


Montana

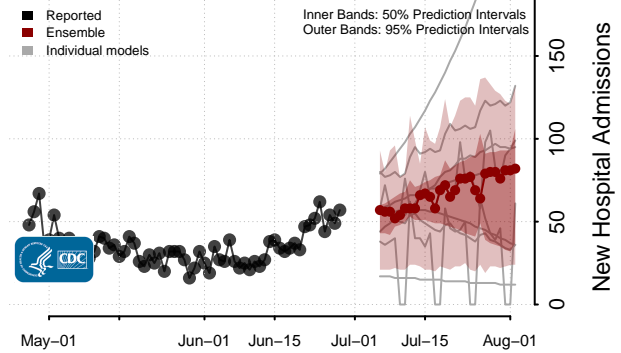
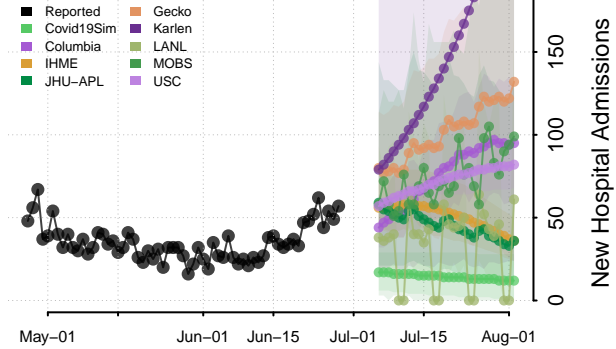


**New daily confirmed COVID-19 hospital admissions may increase in this location over the next four weeks. For these locations, the ensemble forecast indicates a median daily probability of 0.75 or greater that more hospital admissions will be reported in the last seven days of the forecast than the median in the last seven days of reported data.

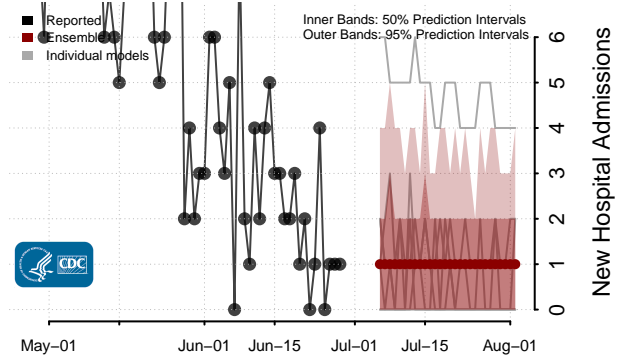
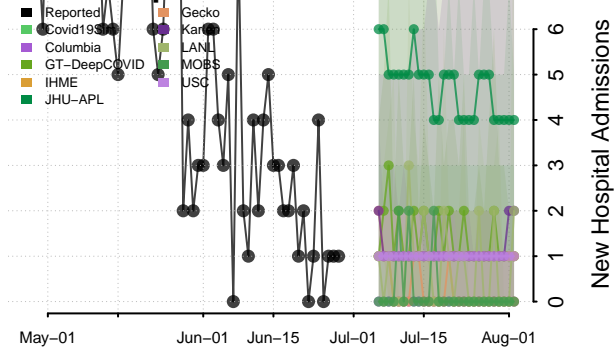
Nebraska



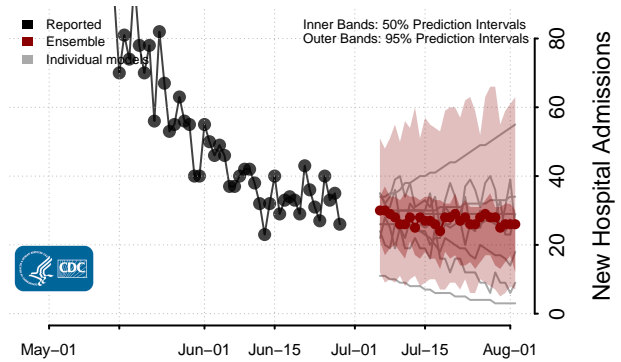
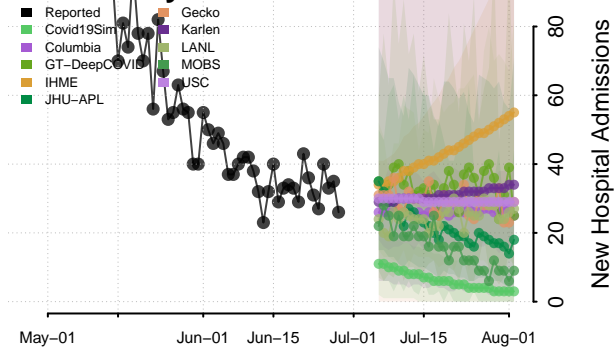
Nevada



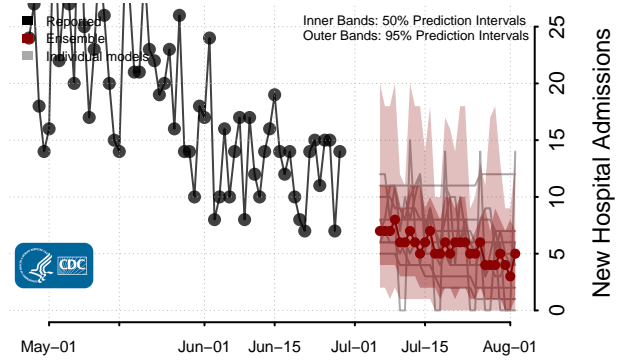
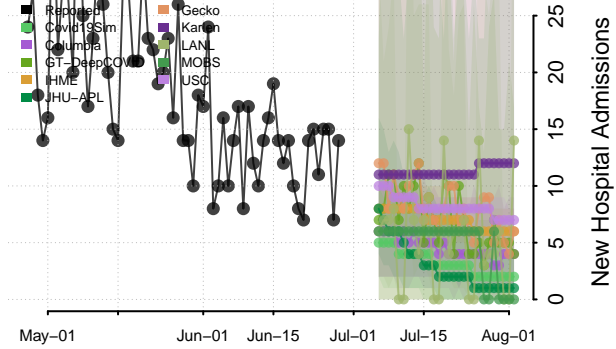
New Hampshire



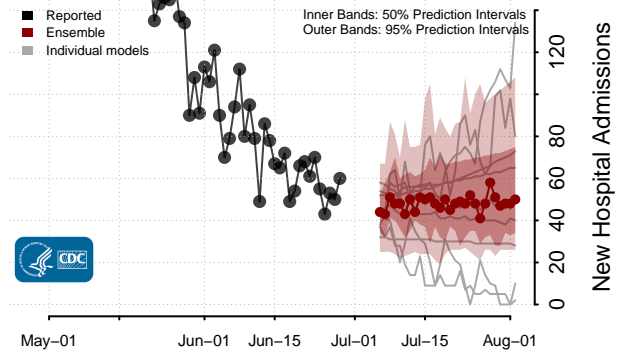
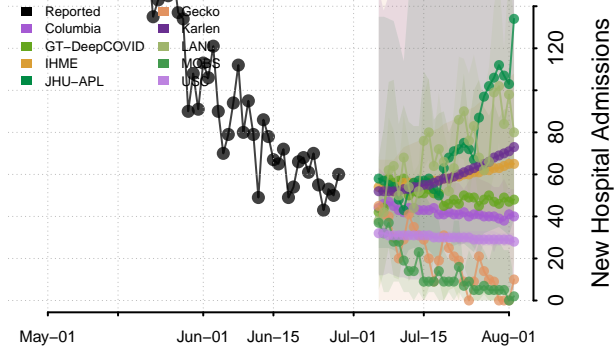
New Jersey



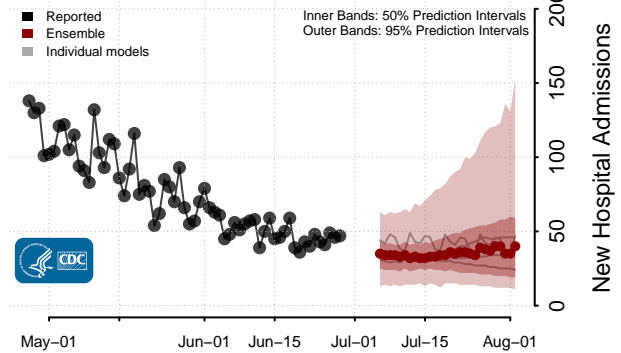
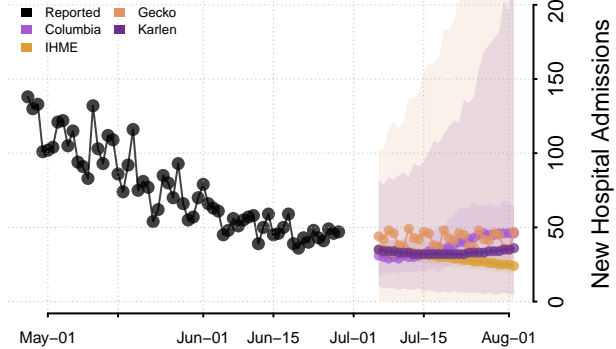
New Mexico



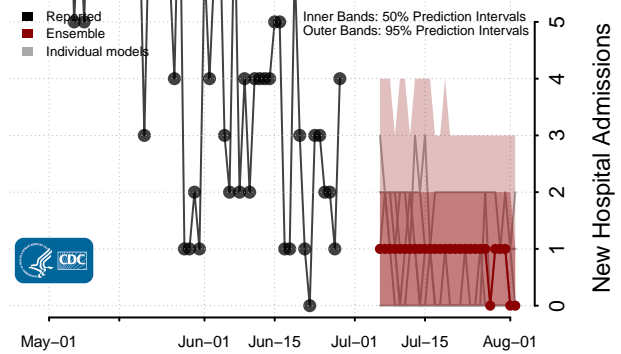
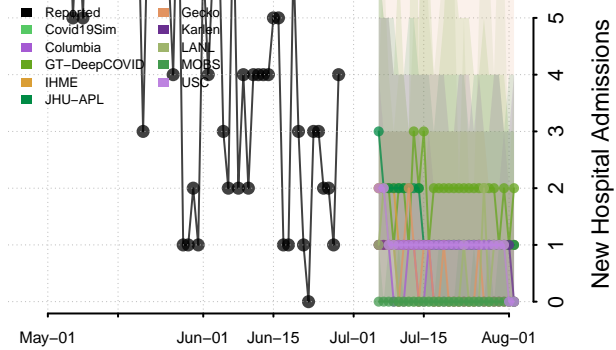
New York



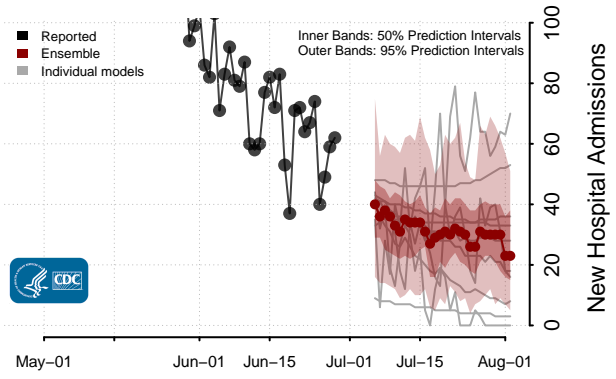
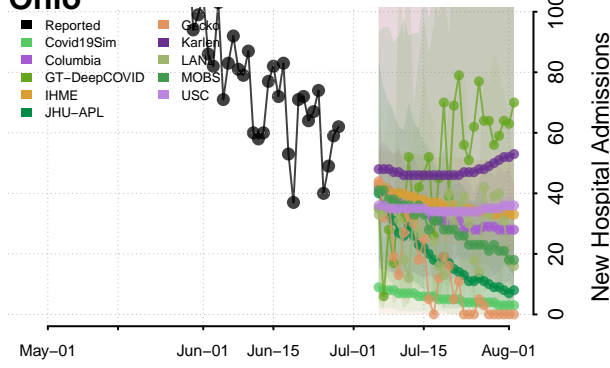
North Carolina



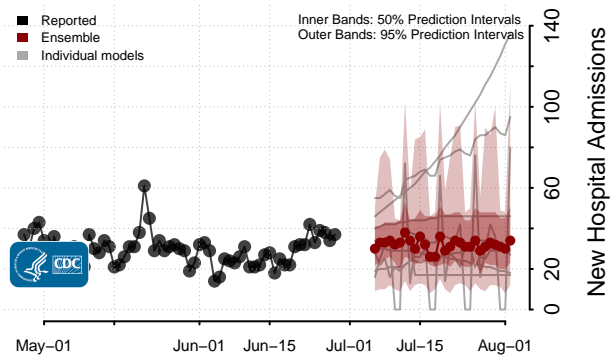
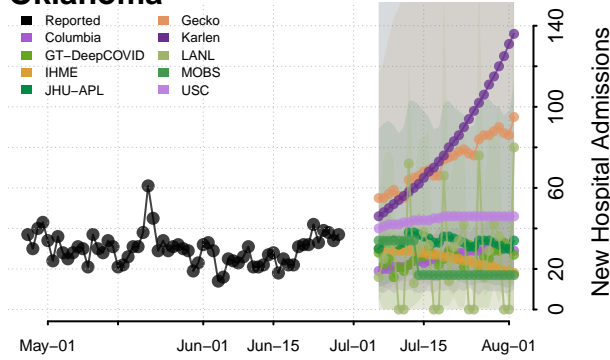
North Dakota



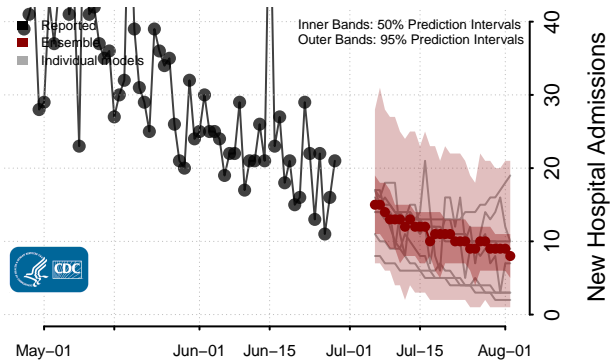
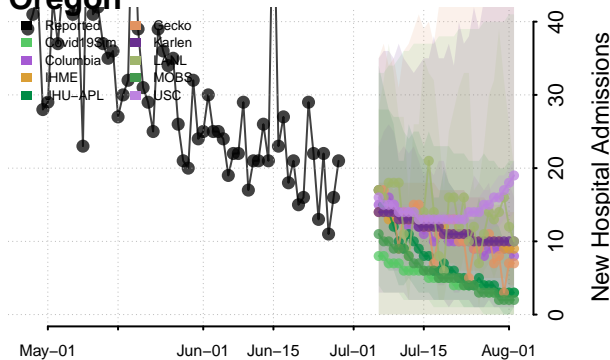
Ohio*



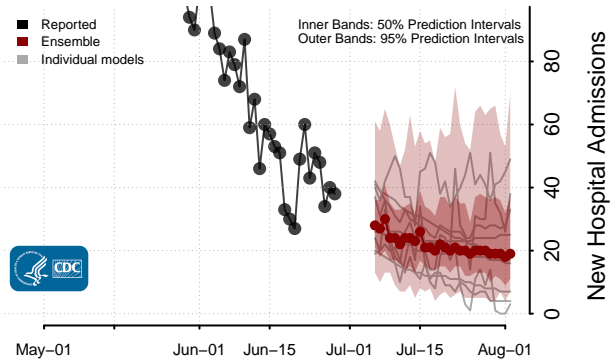
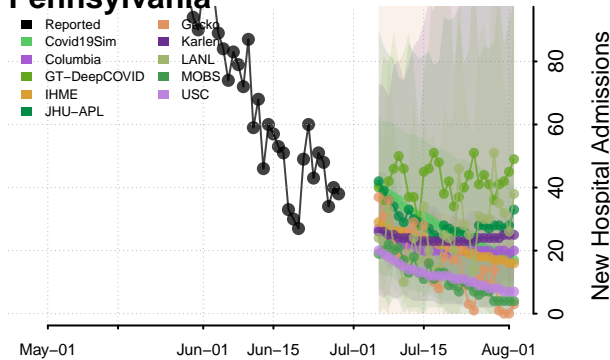
Oklahoma



Oregon*

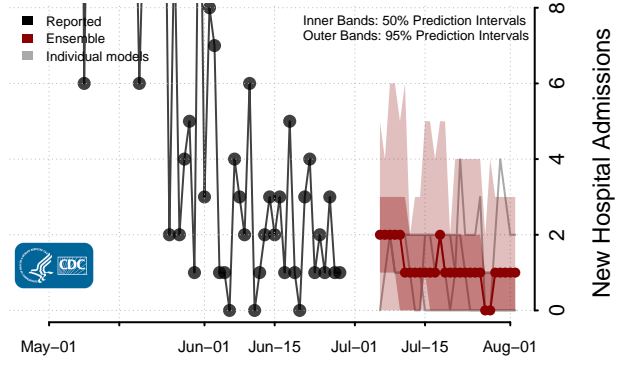
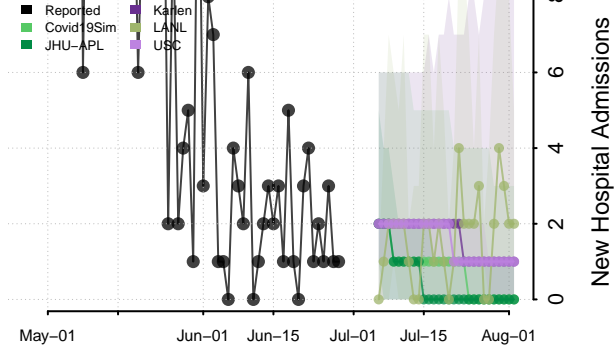


Pennsylvania*

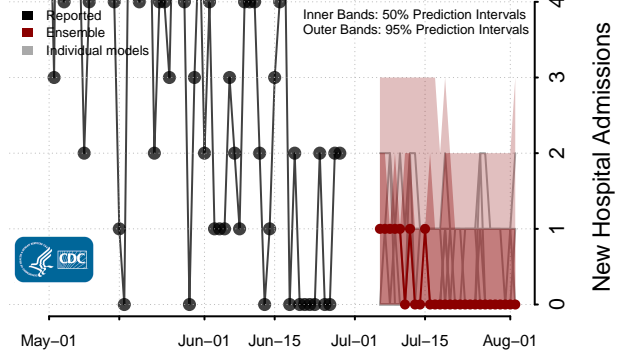
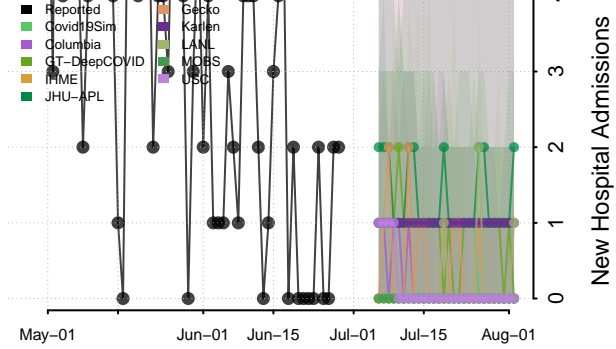


*New daily confirmed COVID-19 hospital admissions may decrease in this location over the next four weeks. For these locations, the ensemble forecast indicates a median daily probability of 0.75 or greater that fewer hospital admissions will be reported in the last seven days of the forecast than the median in the last seven days of reported data.

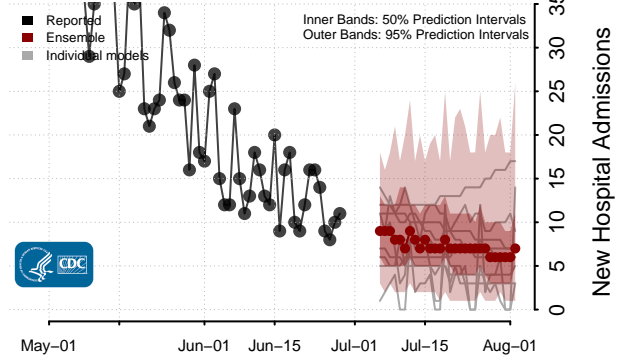
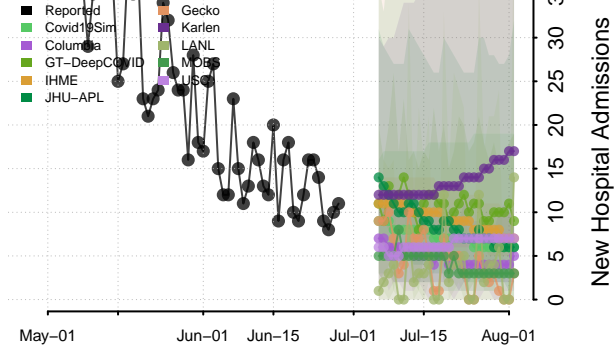
Puerto Rico



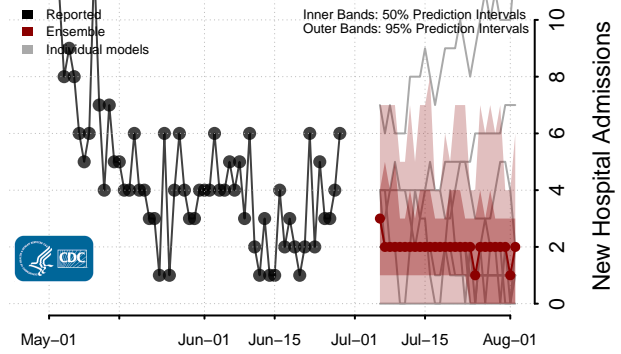
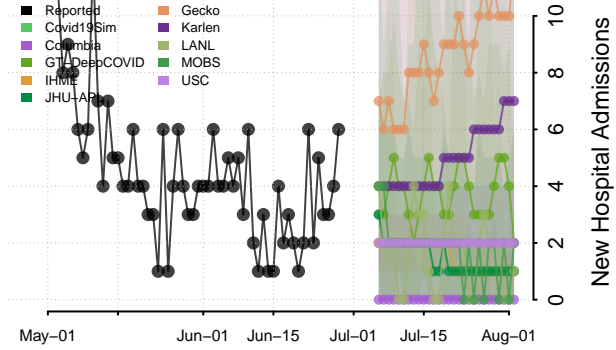
Rhode Island



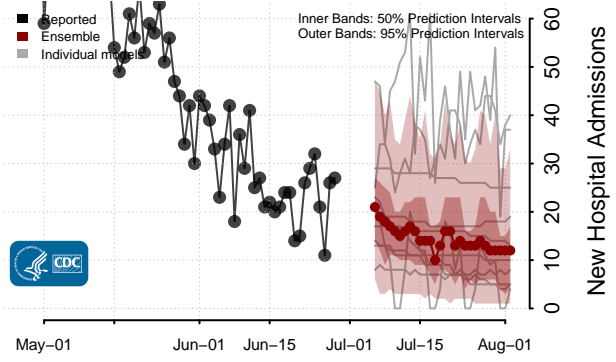
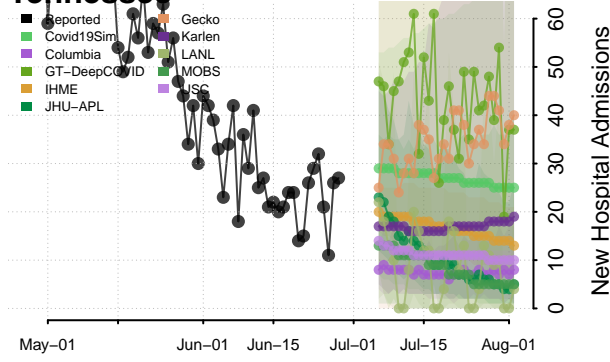
South Carolina



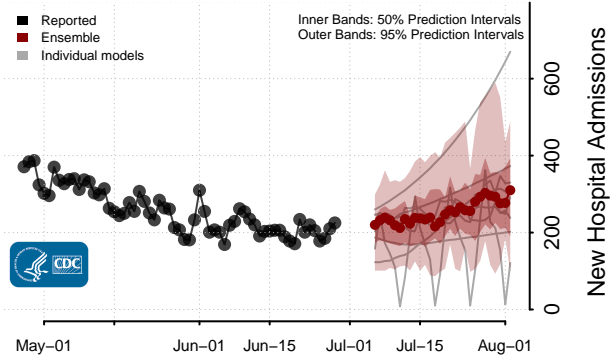
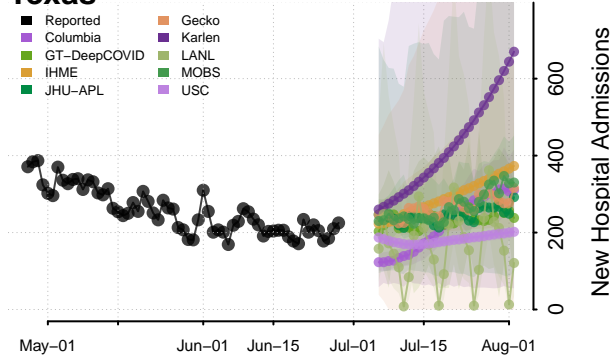
South Dakota



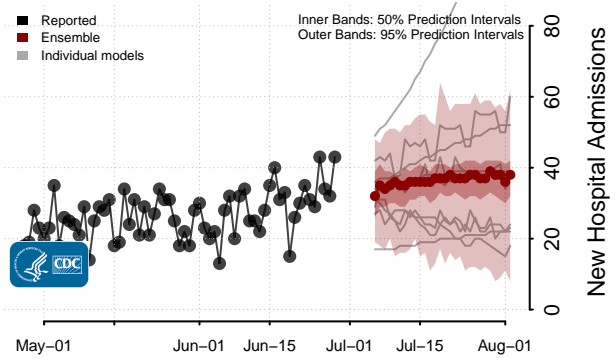
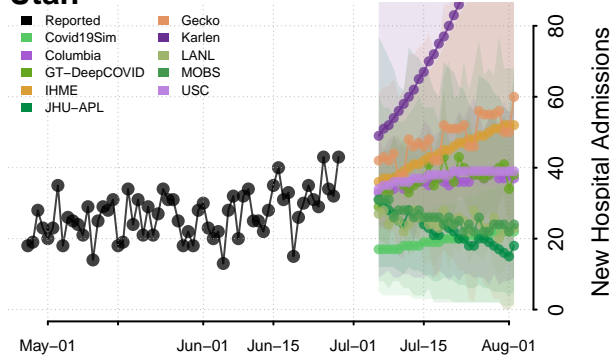
Tennessee*



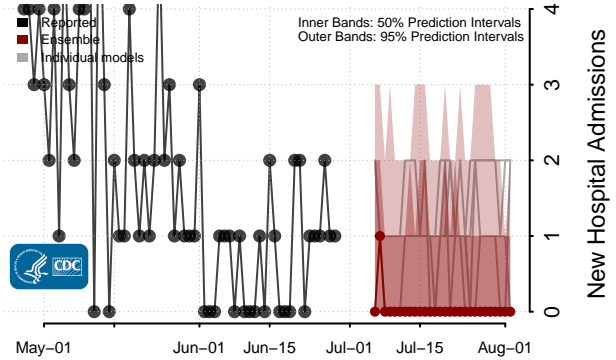
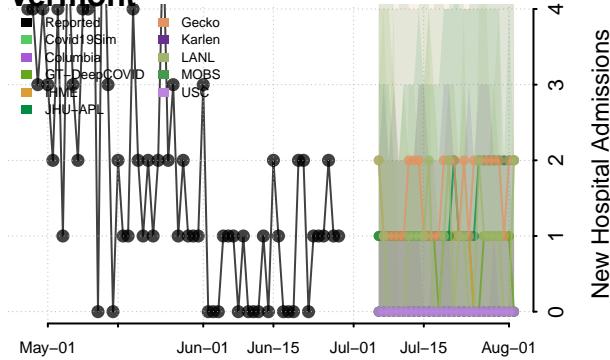
Texas**



Utah



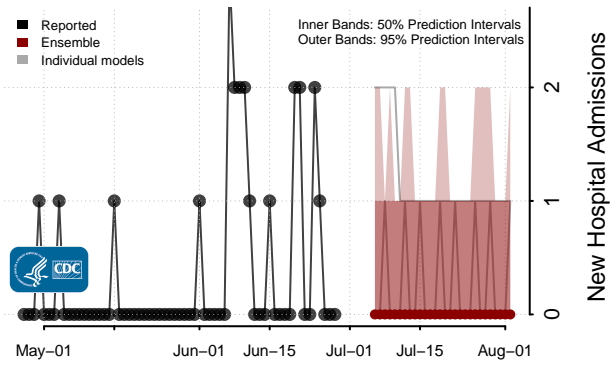
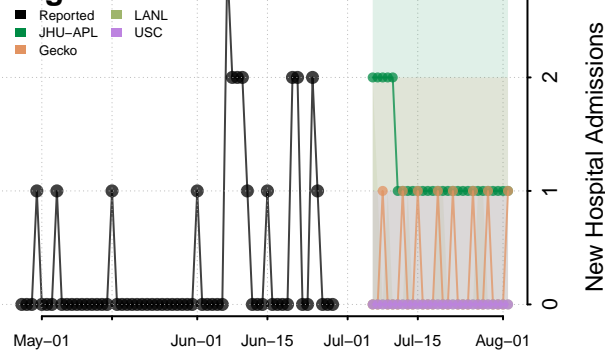
Vermont



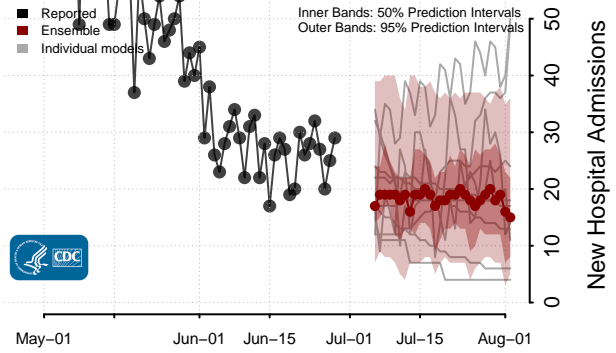
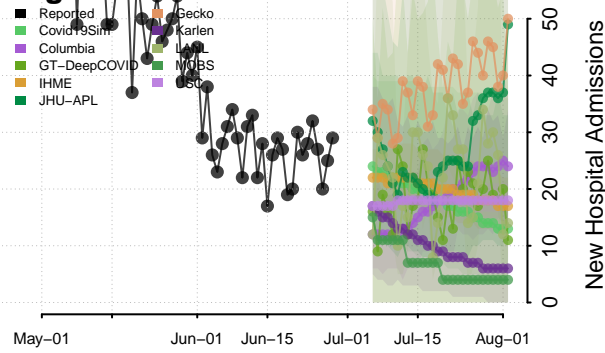
*New daily confirmed COVID-19 hospital admissions may decrease in this location over the next four weeks. For these locations, the ensemble forecast indicates a median daily probability of 0.75 or greater that fewer hospital admissions will be reported in the last seven days of the forecast than the median in the last seven days of reported data.

**New daily confirmed COVID-19 hospital admissions may increase in this location over the next four weeks. For these locations, the ensemble forecast indicates a median daily probability of 0.75 or greater that more hospital admissions will be reported in the last seven days of the forecast than the median in the last seven days of reported data.

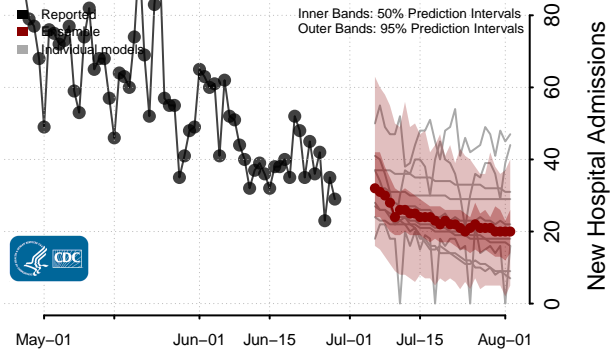
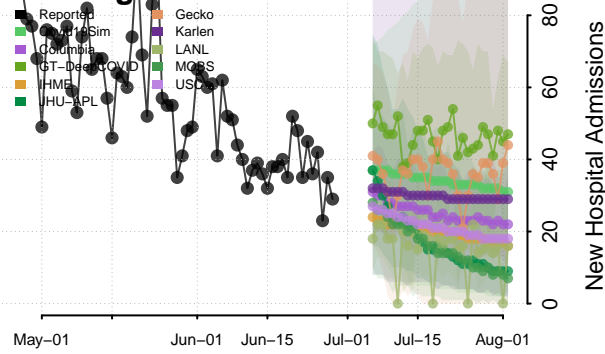
Virgin Islands



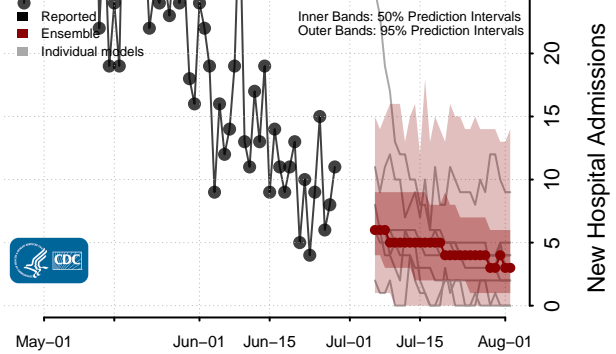
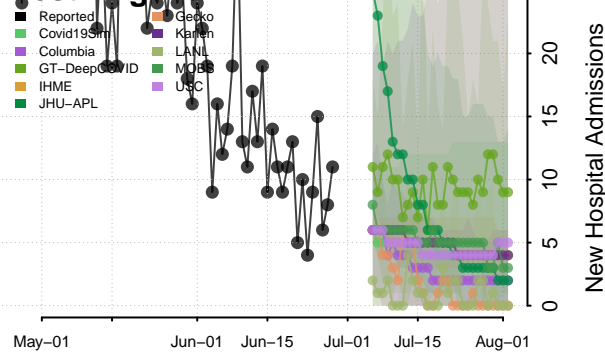
Virginia



Washington*

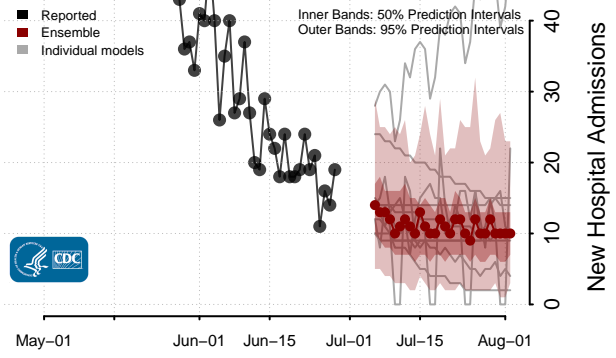
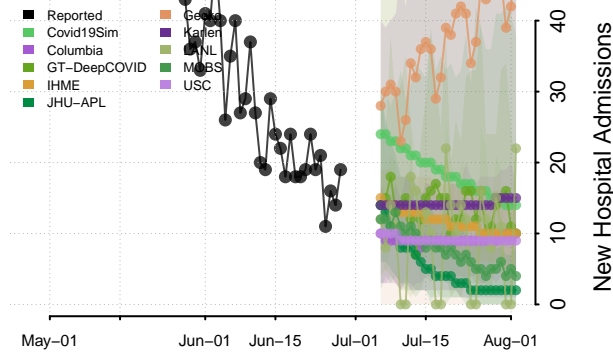


West Virginia

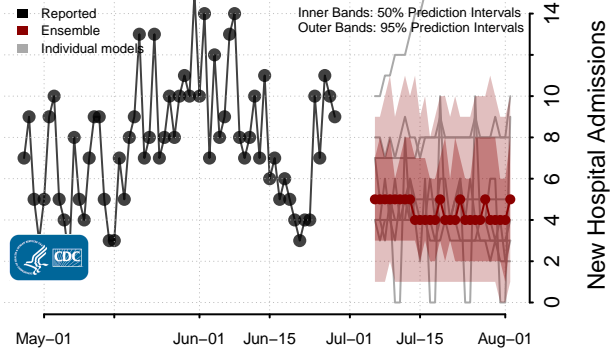
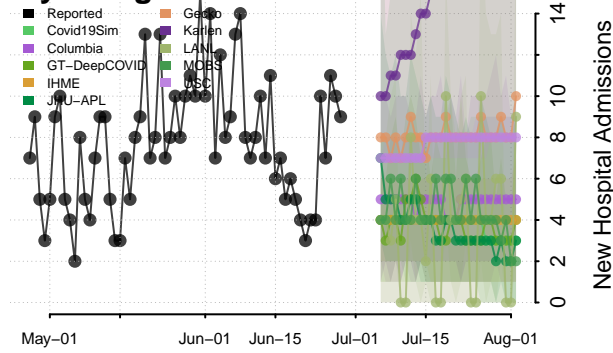


*New daily confirmed COVID-19 hospital admissions may decrease in this location over the next four weeks. For these locations, the ensemble forecast indicates a median daily probability of 0.75 or greater that fewer hospital admissions will be reported in the last seven days of the forecast than the median in the last seven days of reported data.

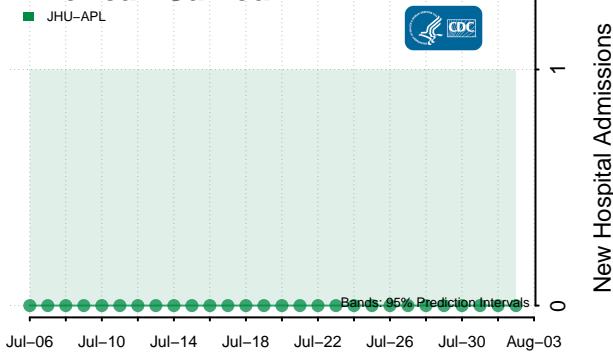
Wisconsin



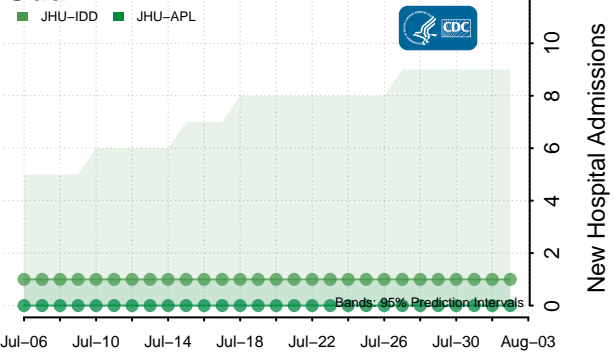
Wyoming



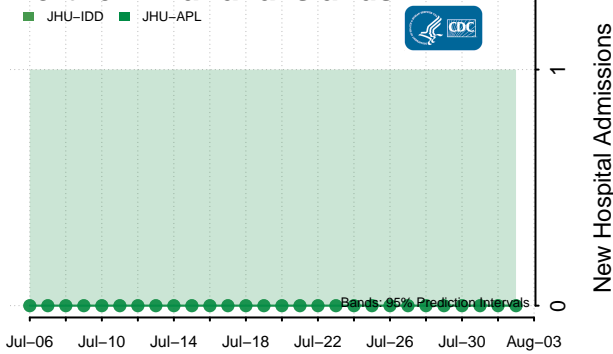
American Samoa***



Guam***



Northern Mariana Islands***



***The daily number of new COVID-19 hospital admissions are not reported for this jurisdiction