

CDART

Comprehensive Disaster Assessment and Readiness Tools

Data collection tools and visual dashboards display information in real time

The **Comprehensive Disaster Assessment and Readiness Tools (CDART)** is a suite of tools developed by the Centers for Disease Control and Prevention and Agency for Toxic Substances and Disease Registry. CDART uses the ArcGIS Survey 1,2,3 platform which allows for **immediate data collection**, data entry in the field with **geospatial capabilities**, as well as real-time data visualization on a **shareable dashboard**.

CDART was initially developed to respond to needs during the 2017 Hurricane Maria response in Puerto Rico. Building upon the success of the early work, CDART was expanded for preparedness, response, and recovery activities.

Healthcare Facilities Project

From May to July 2018, the CDART team collaborated with the Puerto Rico Department of Health (PRDOH) and the Puerto Rico Planning Board (Junta de Planificación) to develop a set of app-based comprehensive disaster assessment and readiness tools for healthcare facilities in Puerto Rico. The project was developed to meet local needs of staff in the field and increase capacity for enhanced disaster preparedness, response, and recovery capabilities. Specific project aims included tool development, in collaboration with PRDOH, to train PRDOH staff on implementation.

The app-based tools include:

- **Readiness Check**

- » 48 hours prior to known disaster (such as a hurricane)
- » Potential for quarterly submission baseline and readiness check

- **Rapid Disaster Assessment Tool**

- » Immediately post disaster (<72 hours)
- » Information can be used to prioritize comprehensive assessments for other non-priority healthcare facilities

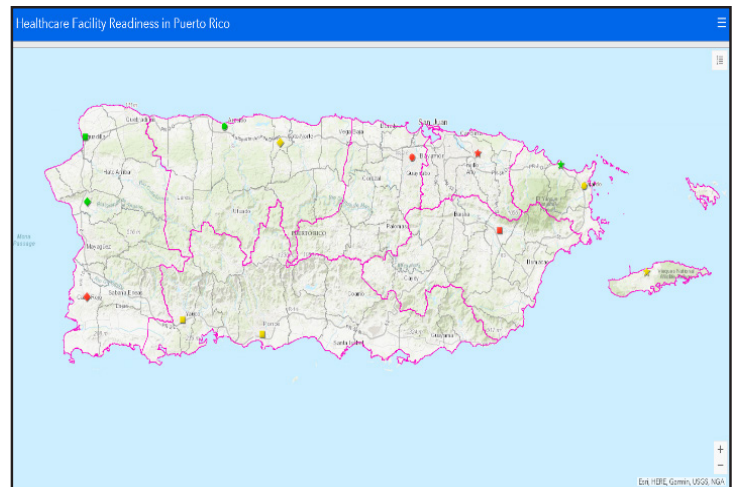
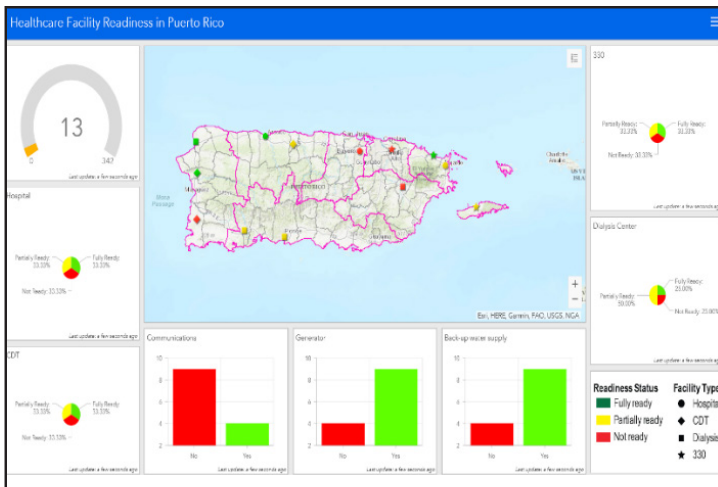
- **Comprehensive Disaster Assessment Tool**

- » <72 hours post-disaster for priority hospitals and clinics
- » Assess second-tier healthcare facilities based on results from rapid assessment

Comprehensive Health Care Facility Assessment Tool	
▶ General Health Care Facility Information	▶ General Information
Readiness-Specific Information	▶ Facility Information
▼ Communications	▶ Block 1 - Facility damage assessment
Do you have back-up communication capability? *	▶ Block 2 - Unit operational level
<input type="radio"/> Yes <input type="radio"/> No	▶ Block 3 - Power capabilities
▼ Power	▶ Block 4 - Dialysis information
Do you have a generator? *	▶ Block 5 - Supplies and services
<input type="radio"/> Yes <input type="radio"/> No	▶ Block 6 - Patient movement and evacuation
▼ Water	▶ Block 7 - Medical gases
Do you have a back-up water source? *	▶ Block 8 - Water supply assessment
<input type="radio"/> Yes <input type="radio"/> No	▶ Block 9 - HVAC and other facility items
▼ Current Capabilities	
Hours of Operation *	
<input type="radio"/> 24 Hr/Day	
<input type="radio"/> Regular (8-12 HR/Day)	
<input type="radio"/> Partial (Less than 8 HR/Day)	
Is there a current operational unit reduction? *	
<input type="radio"/> Yes <input type="radio"/> No	
Current number of staffed beds *	
<input type="text"/>	



- A set of **visual shareable dashboards** display critical information that PRDOH can alter based on ongoing needs



Benefits of CDART

- Able to gather and share real-time information among various agencies, which decreases duplication of efforts
- Real-time data entry eliminates manual data entry, increasing efficiency and reducing data entry errors
- Real-time visualization of when surveys or assessments are complete
- Data are immediately available for decision making once surveys are uploaded
- ArcGIS online capabilities allow for management of field teams and visualization of field team locations, which helps enhance situational awareness during disaster response
- Ensures standardized data collection immediately post-disaster and allows follow-up assessments to determine status of public health capacity *throughout* the entire disaster response cycle
- This platform is adaptable for assessments of other facilities allowing for integration of *multiple assessments in one common operational picture*

For More Information About CDART:

Contact Kelsey Benson (770-488-0684 or email yrn0@cdc.gov) or contact Chris Maniglier-Poulet, ATSDR Region 8 (303-312-7013 or email cgp8@cdc.gov)