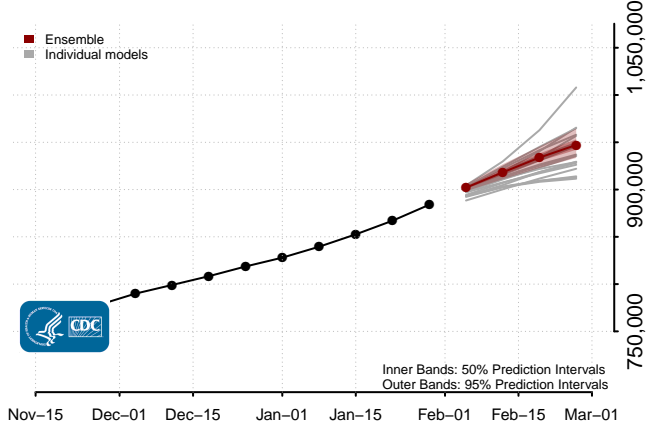
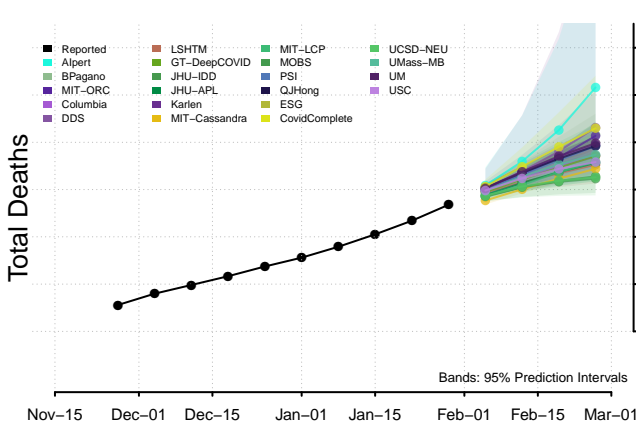
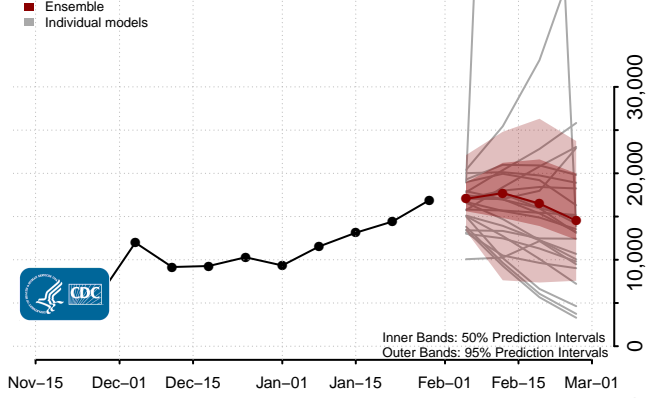
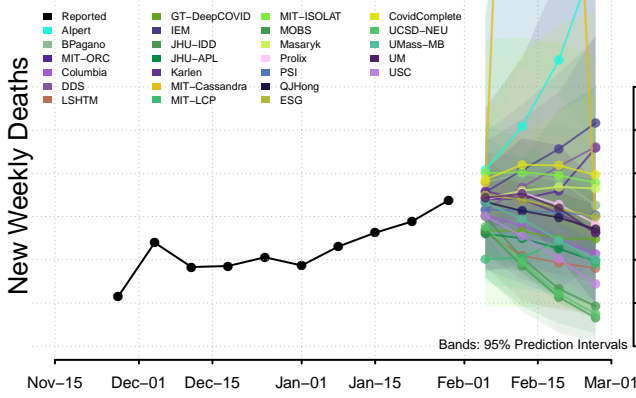
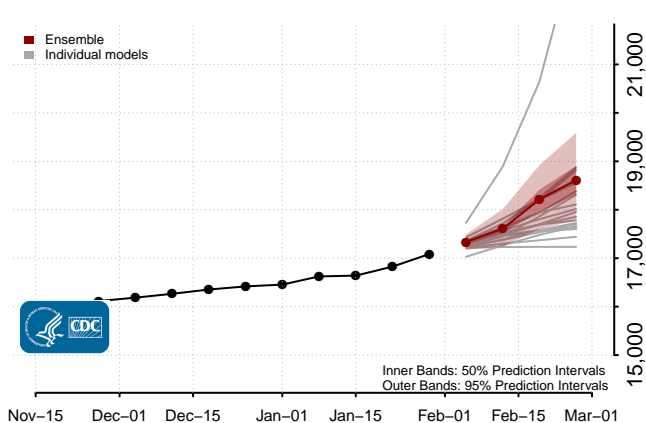
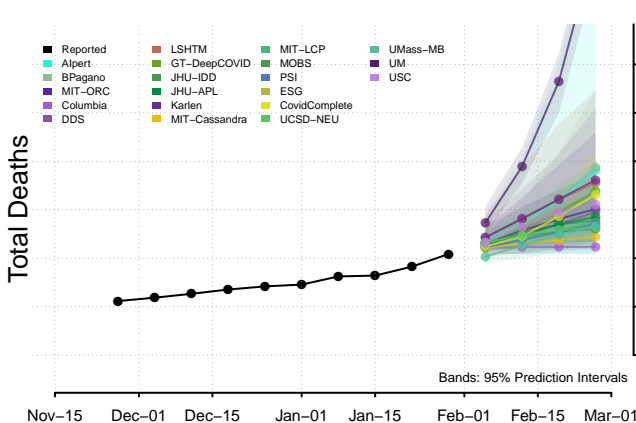
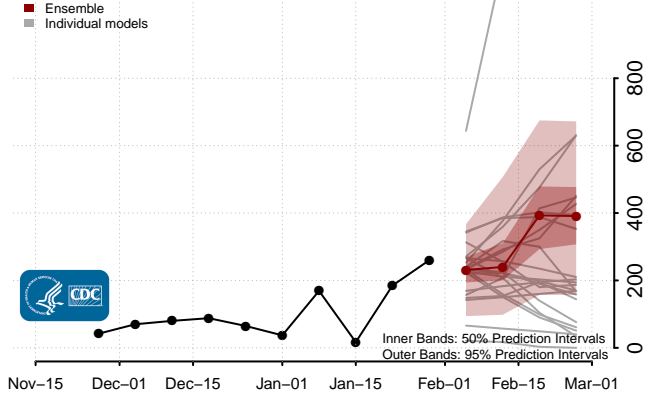
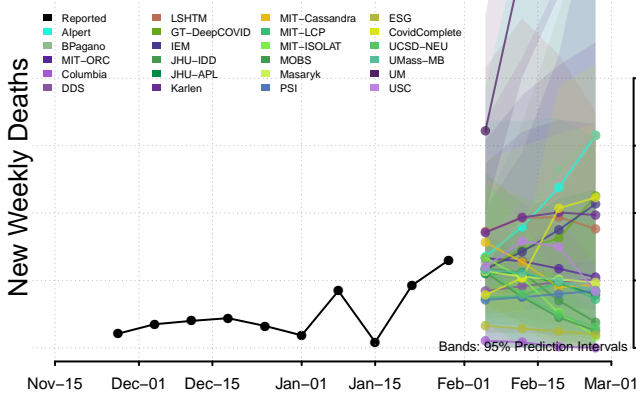


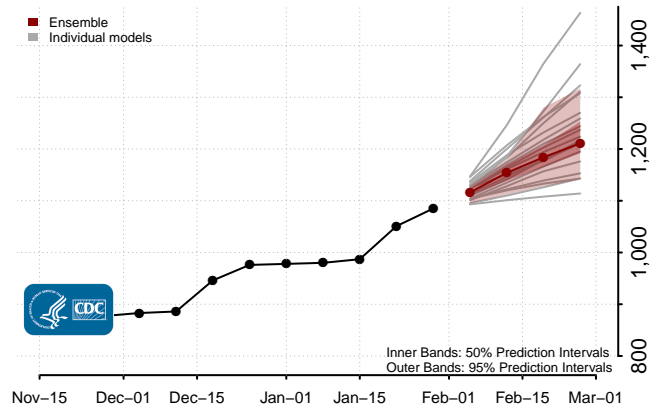
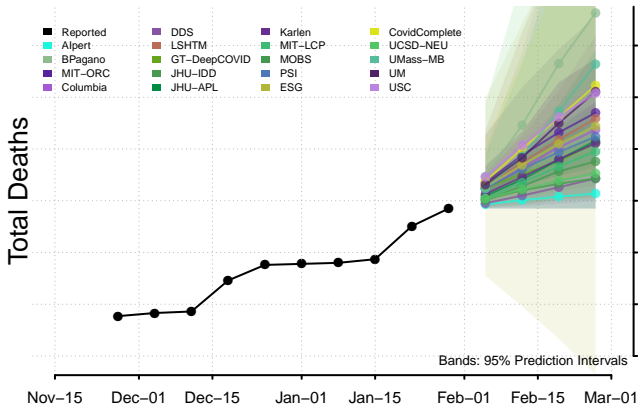
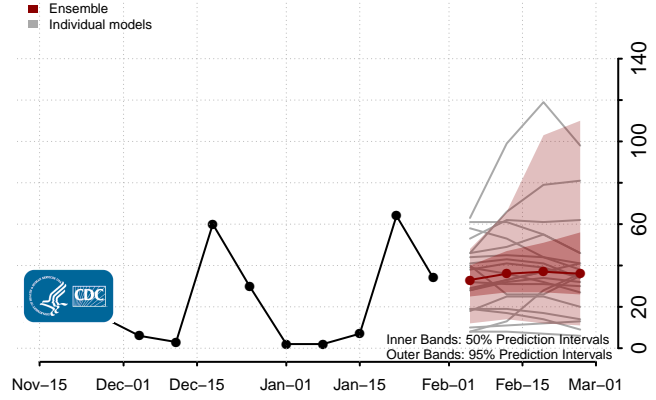
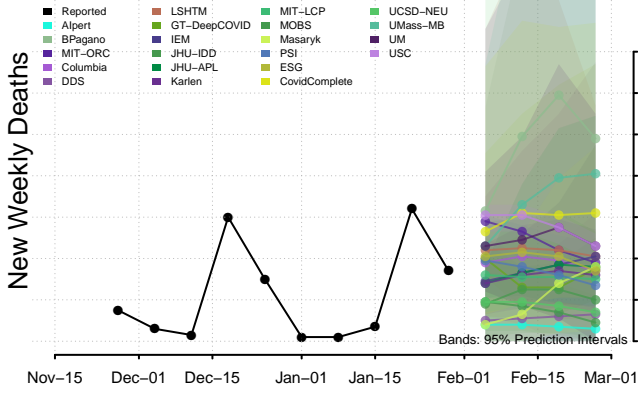
National



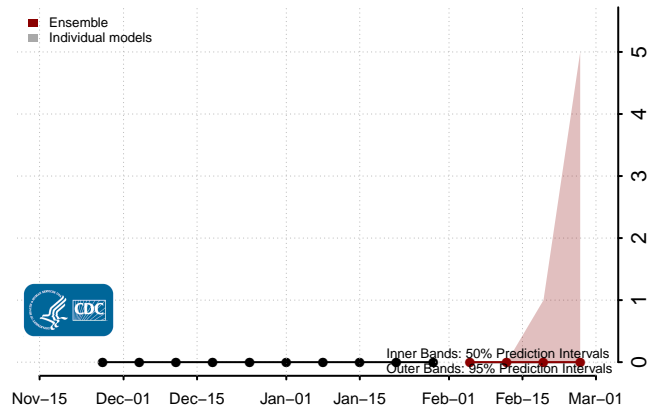
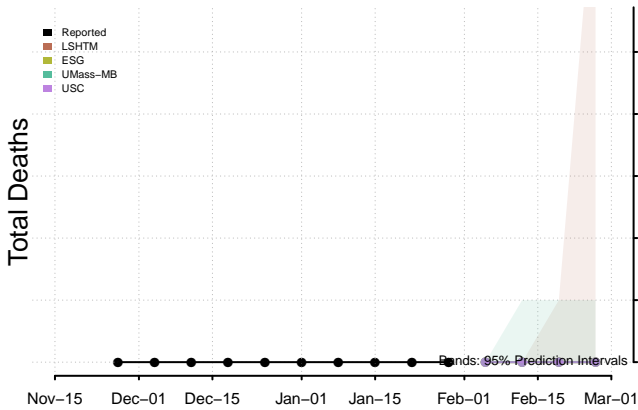
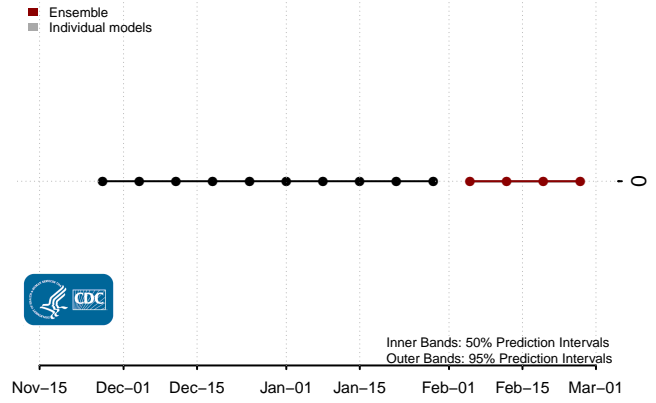
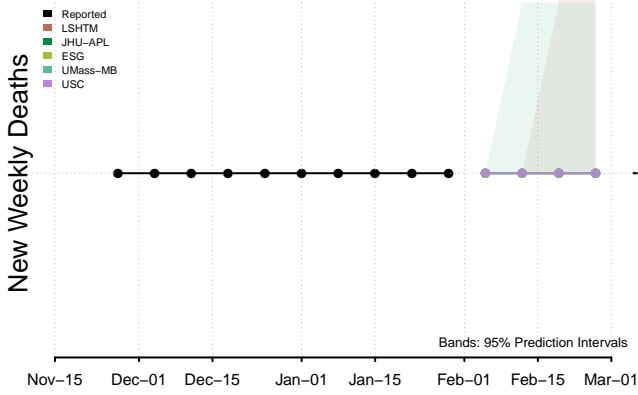
Alabama



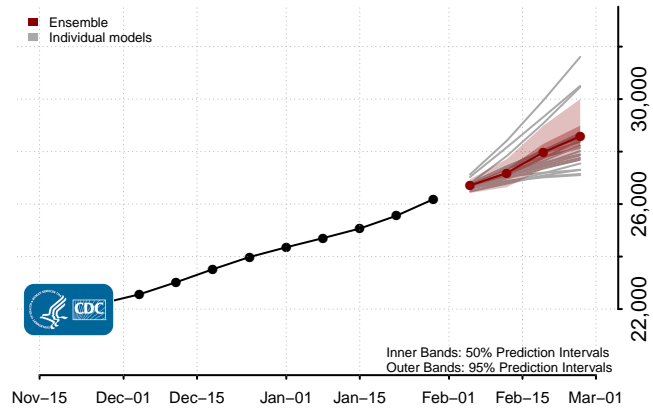
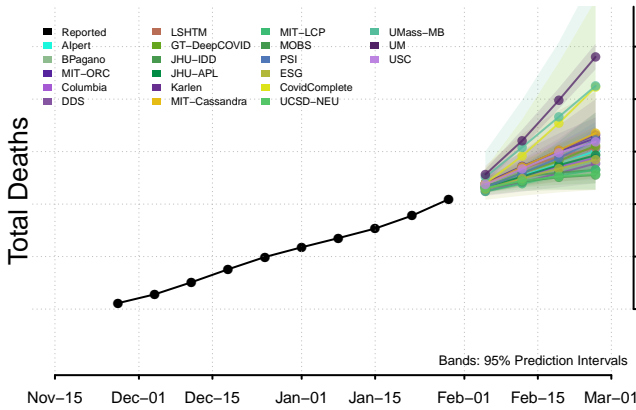
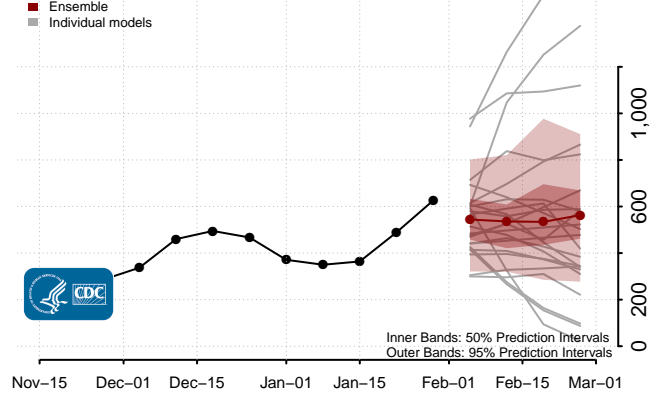
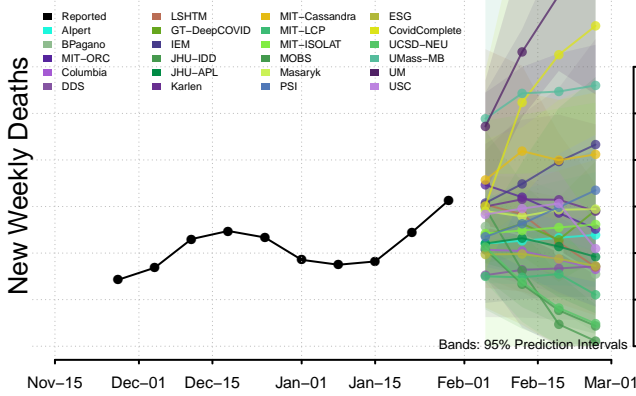
Alaska



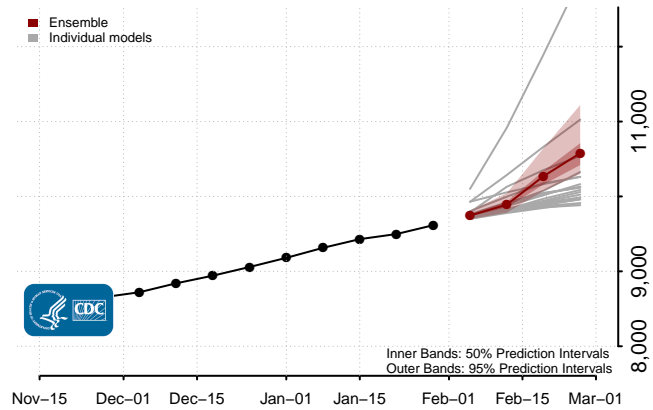
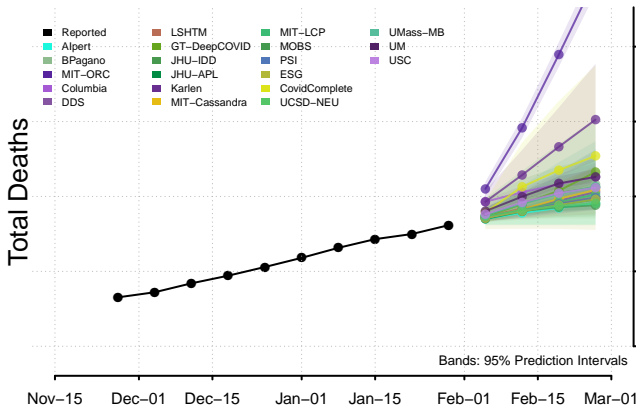
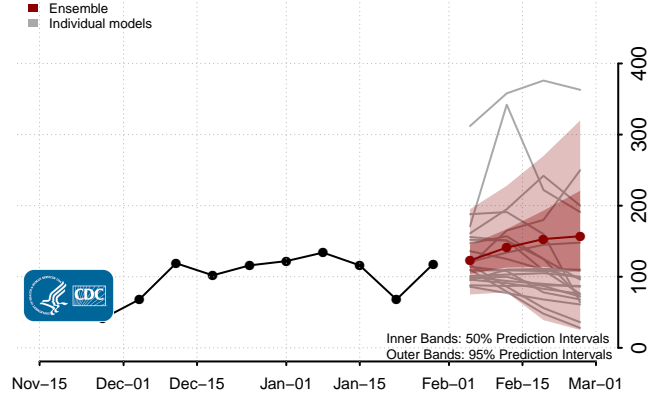
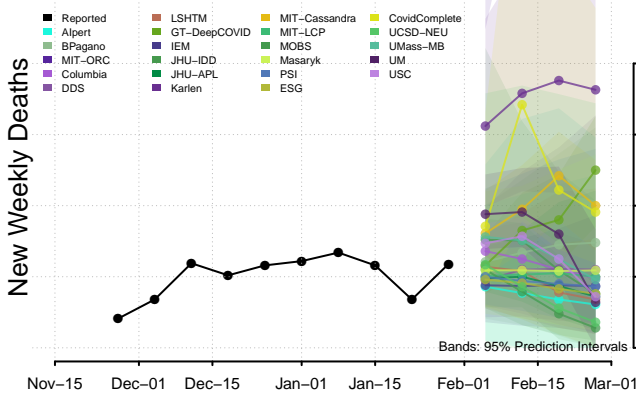
American Samoa



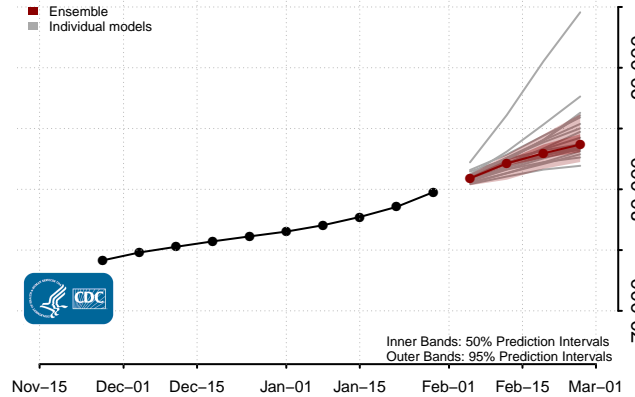
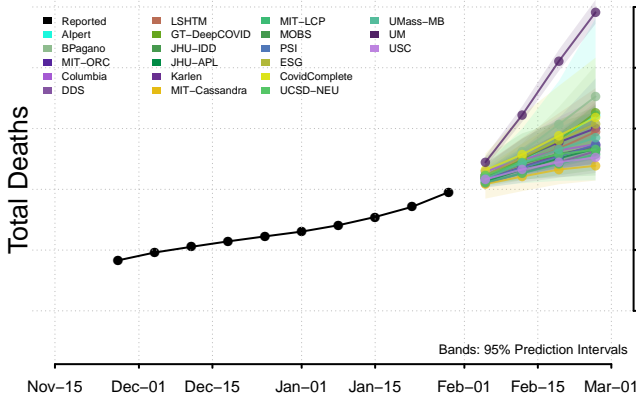
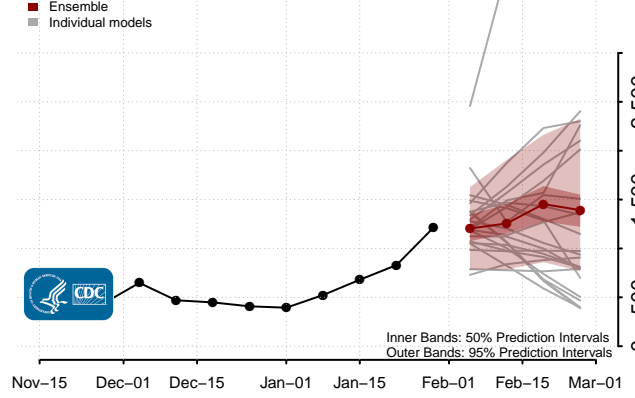
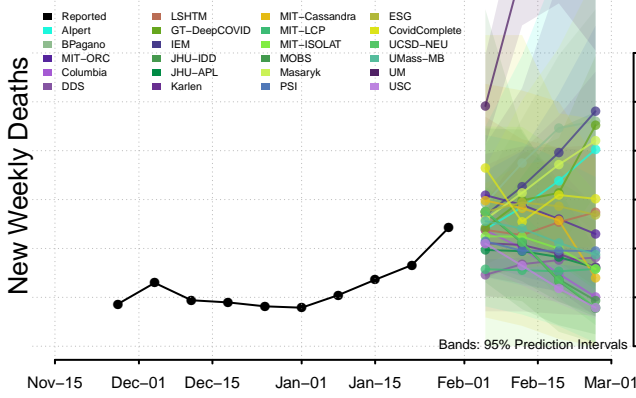
Arizona



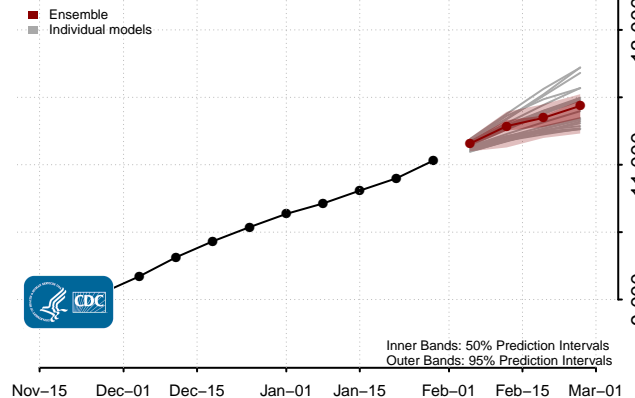
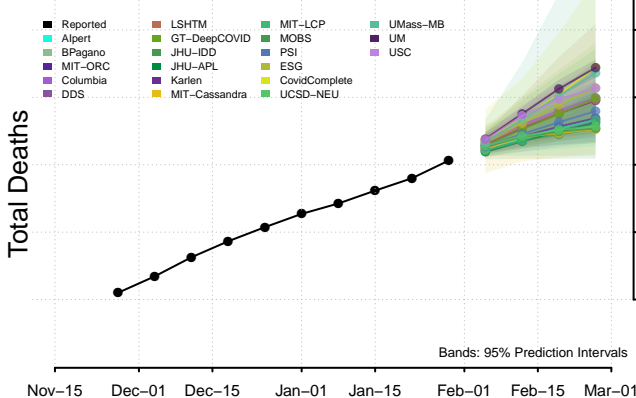
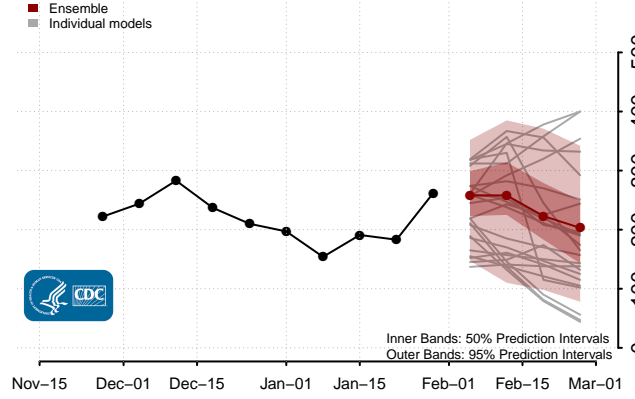
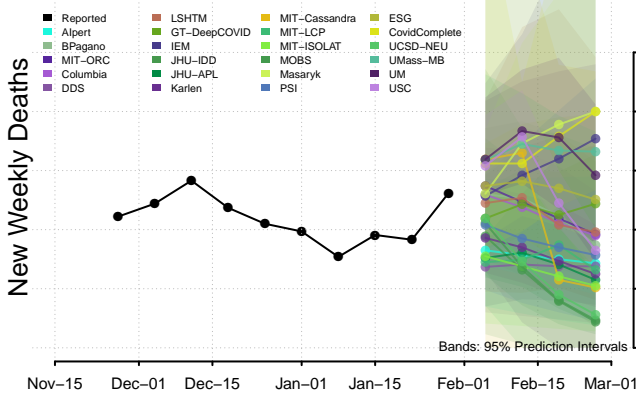
Arkansas



California**



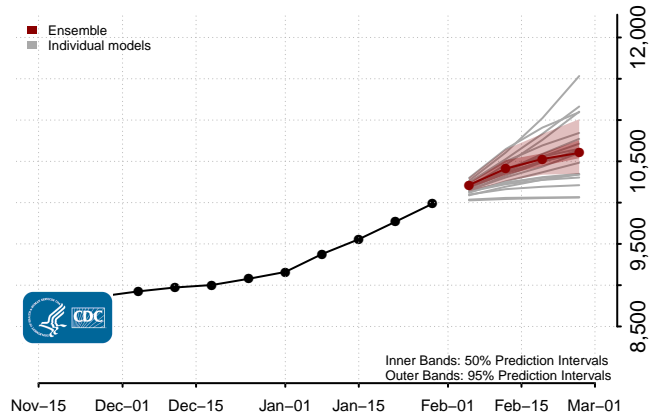
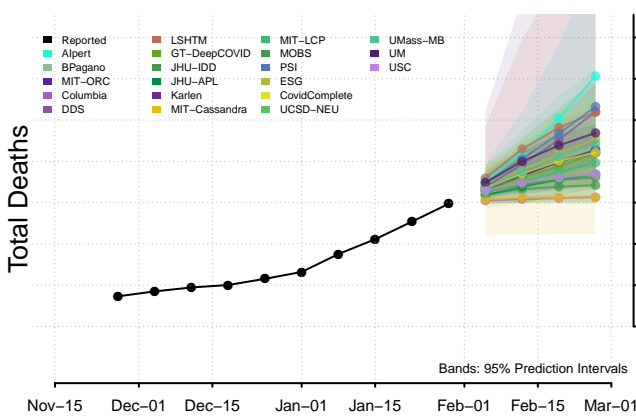
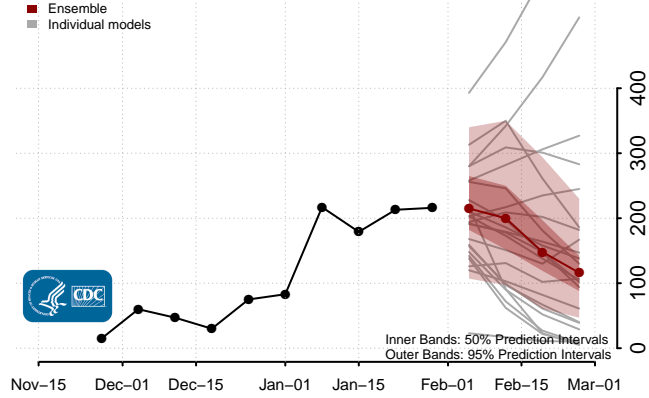
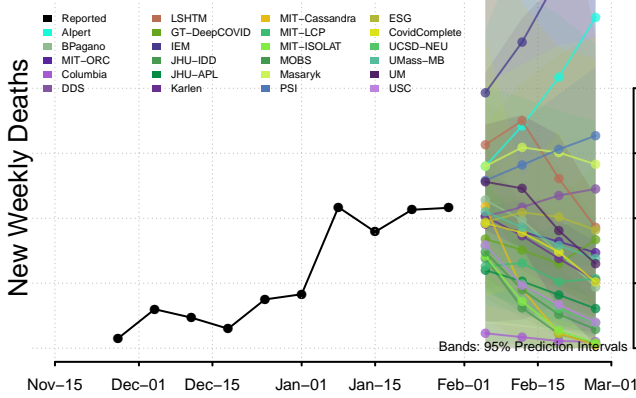
Colorado*



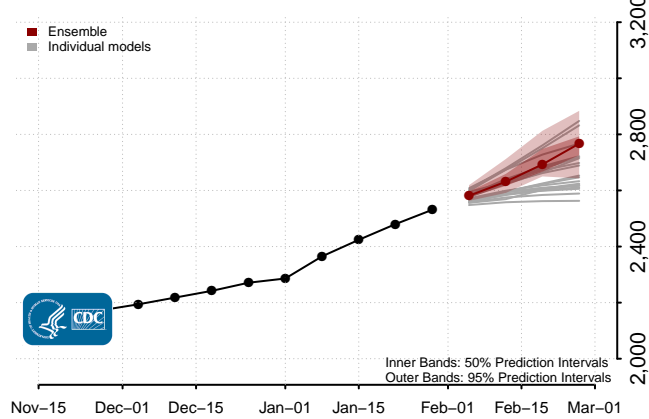
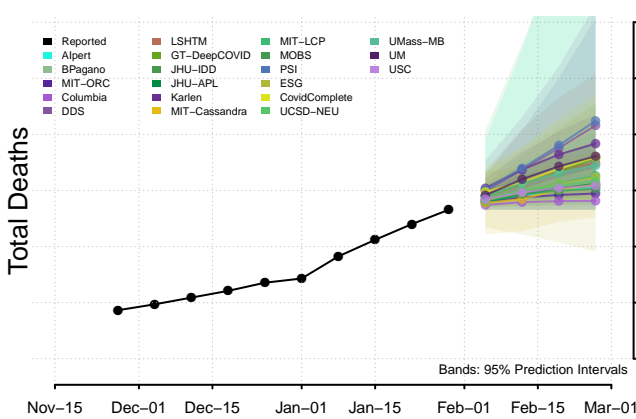
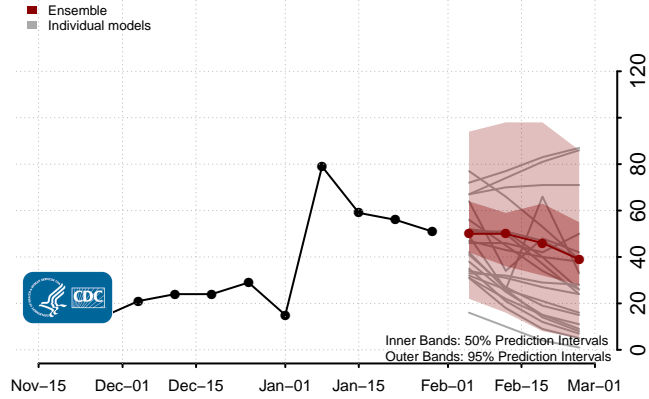
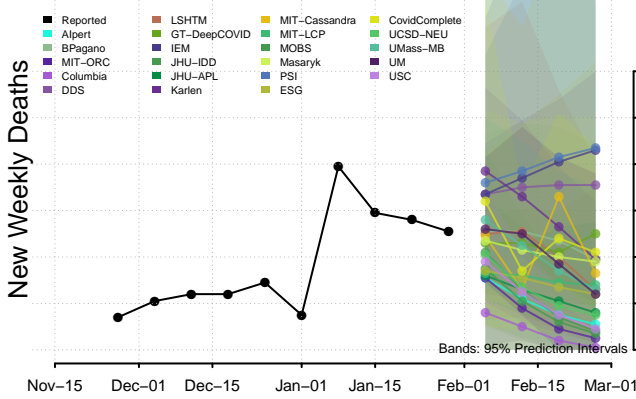
*New weekly deaths may decrease in this location over the next four weeks. For these locations, the ensemble forecast indicates a probability of 0.75 or greater that fewer deaths will be reported in week four of the forecast than in the last reported week.

**New weekly deaths may increase in this location over the next four weeks. For these locations, the ensemble forecast indicates a probability of 0.75 or greater that more deaths will be reported in week four of the forecast than in the last reported week.

Connecticut*

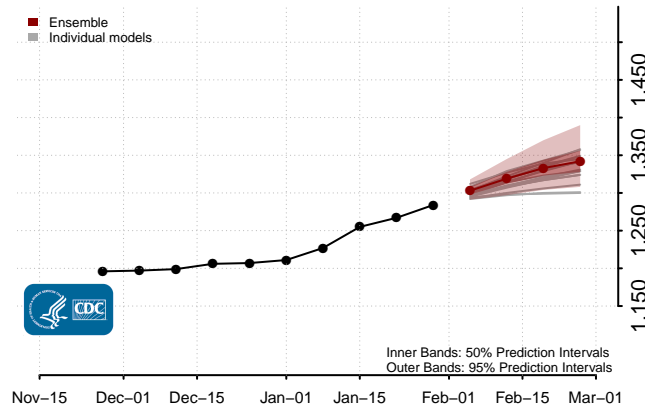
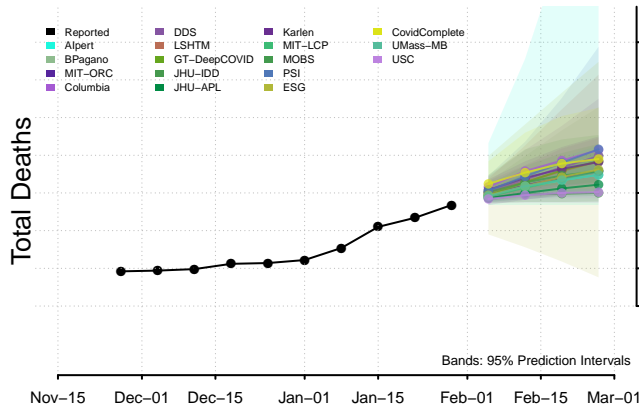
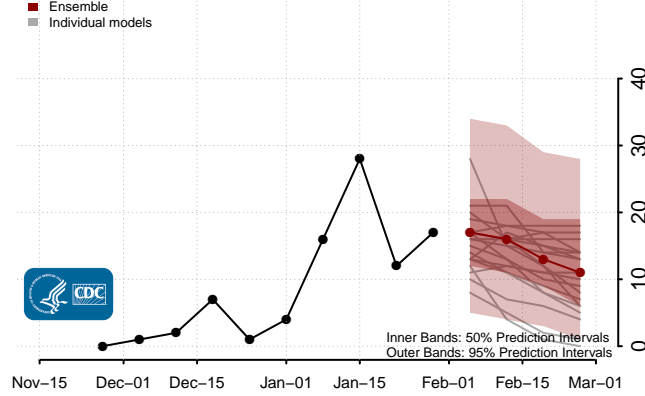
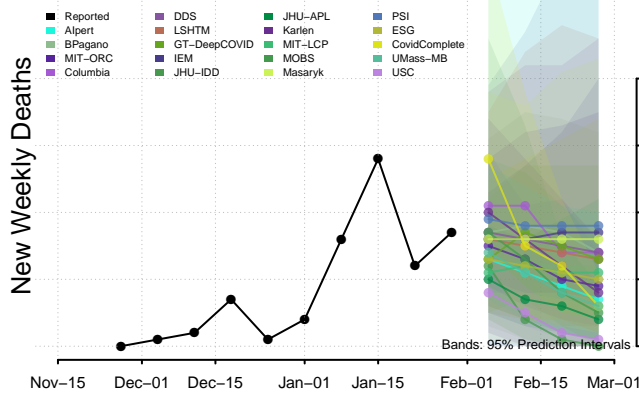


Delaware

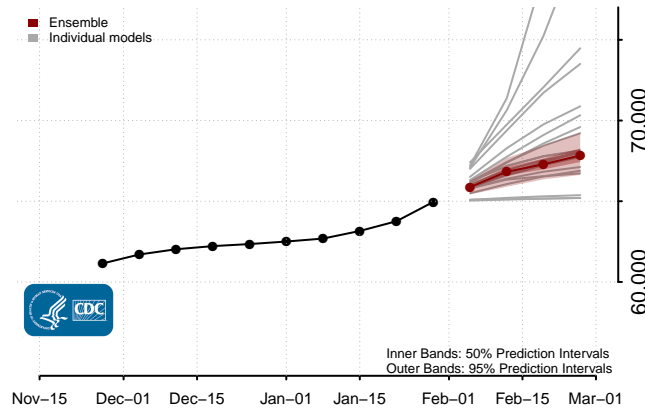
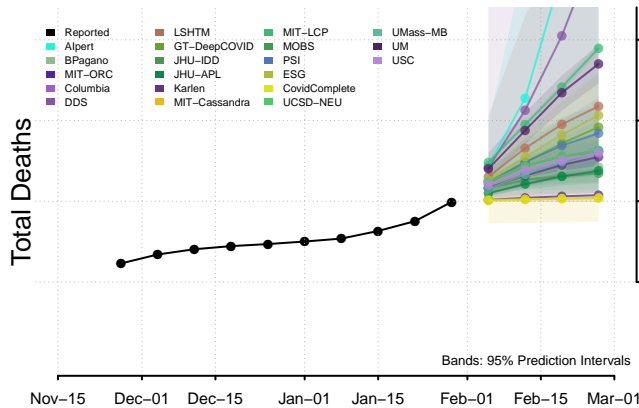
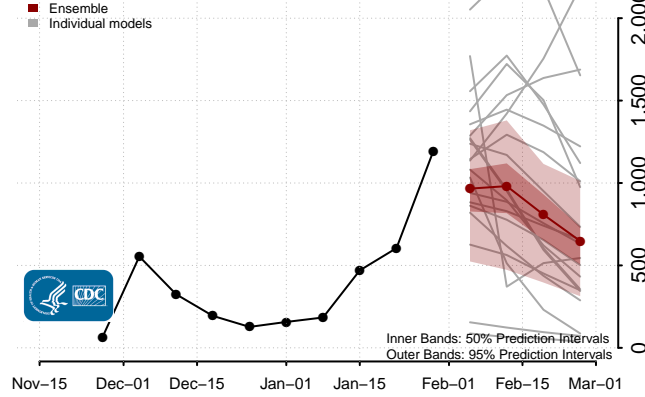
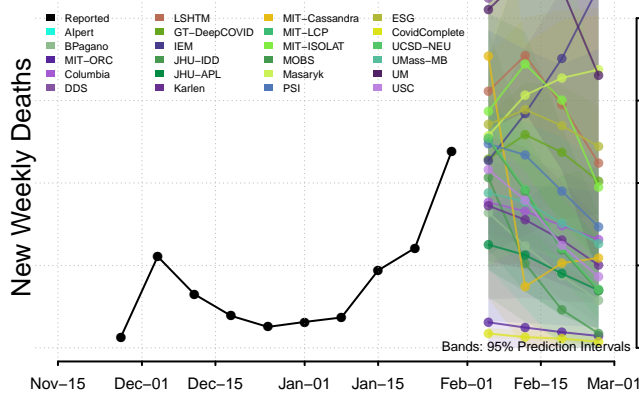


*New weekly deaths may decrease in this location over the next four weeks. For these locations, the ensemble forecast indicates a probability of 0.75 or greater that fewer deaths will be reported in week four of the forecast than in the last reported week.

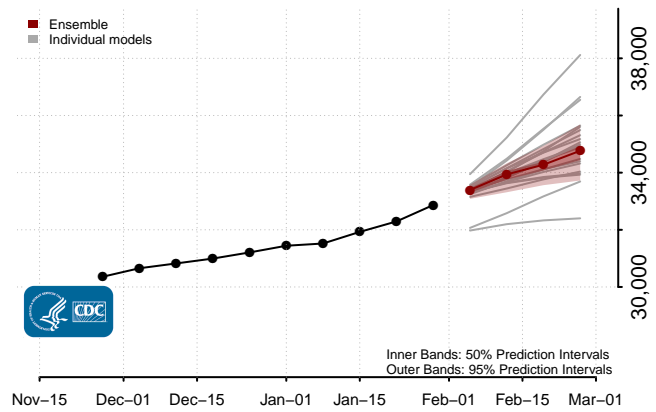
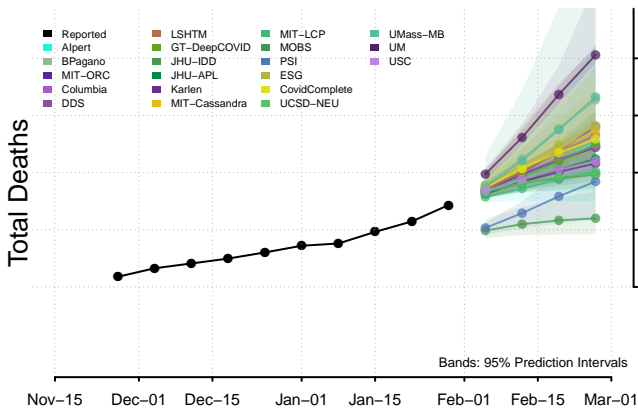
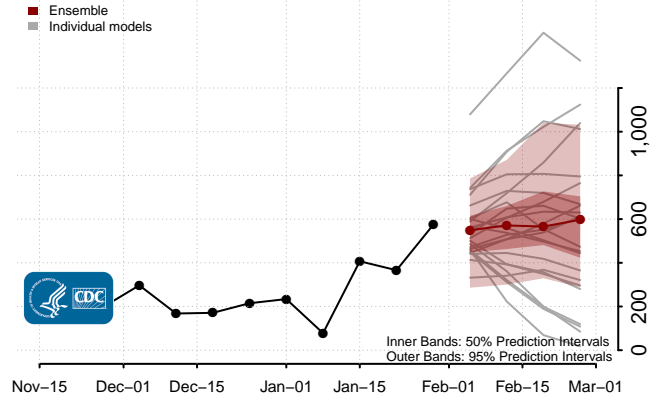
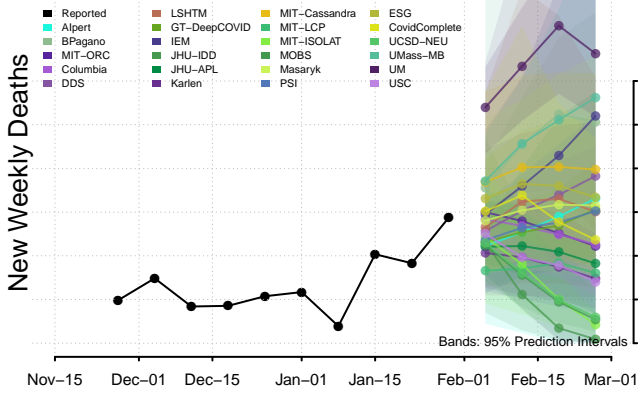
District of Columbia



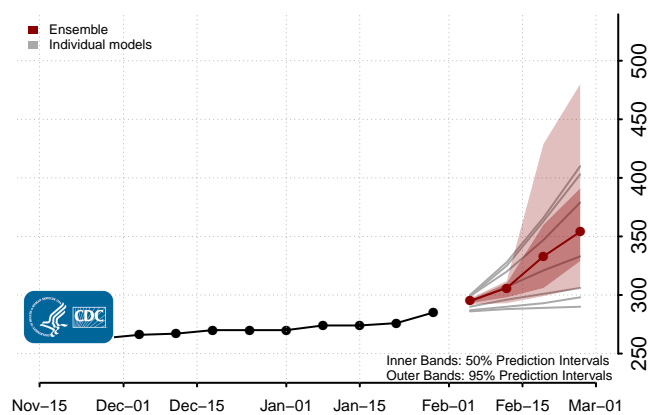
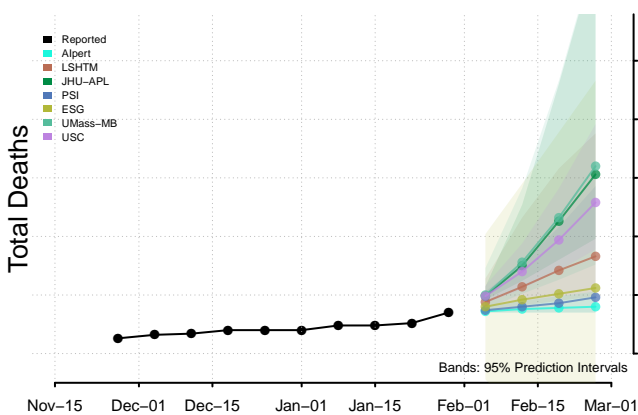
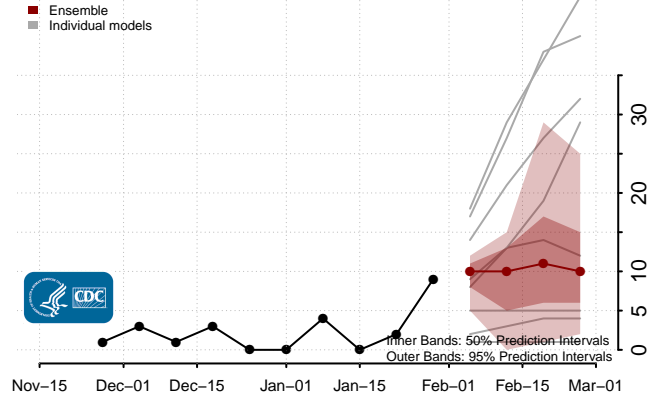
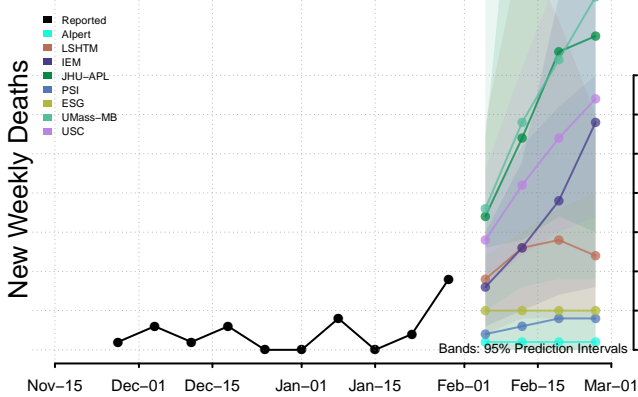
Florida



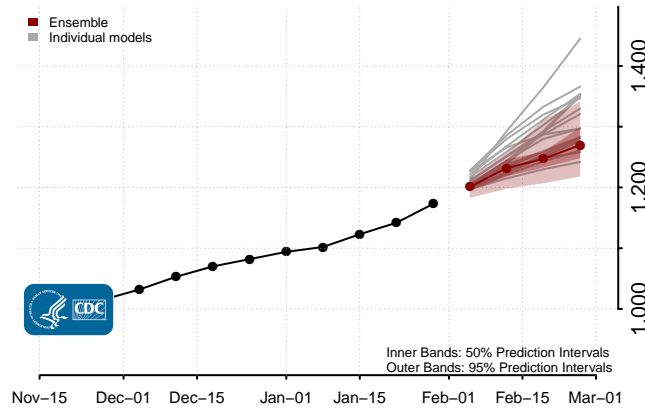
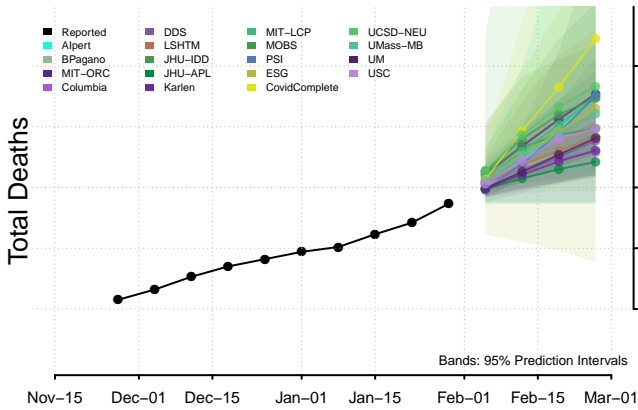
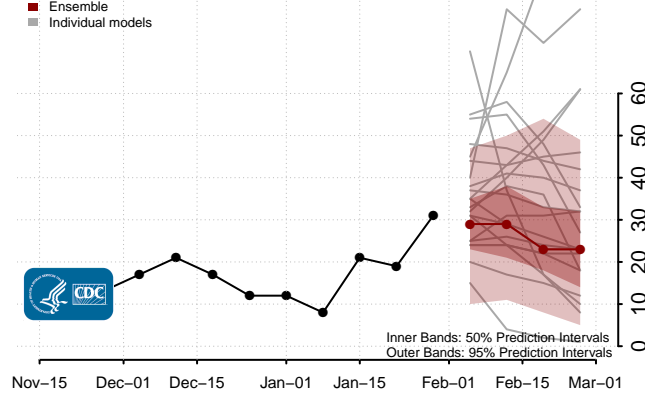
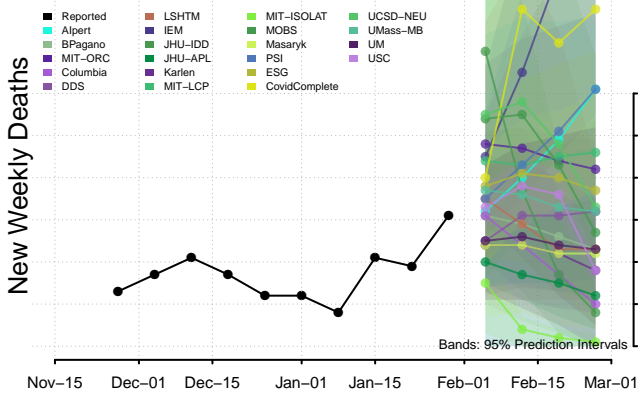
Georgia



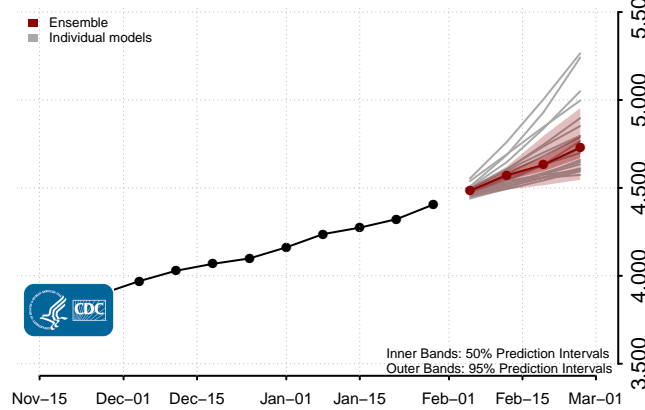
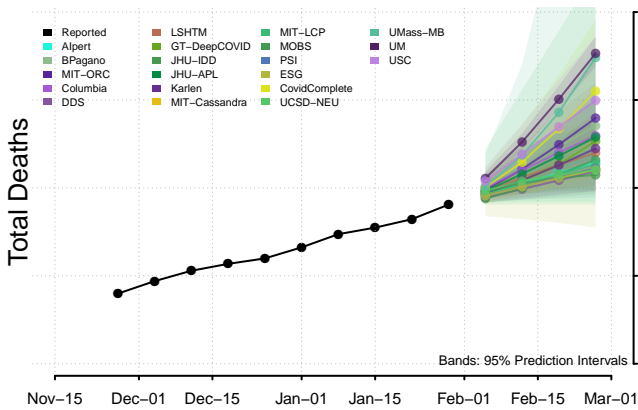
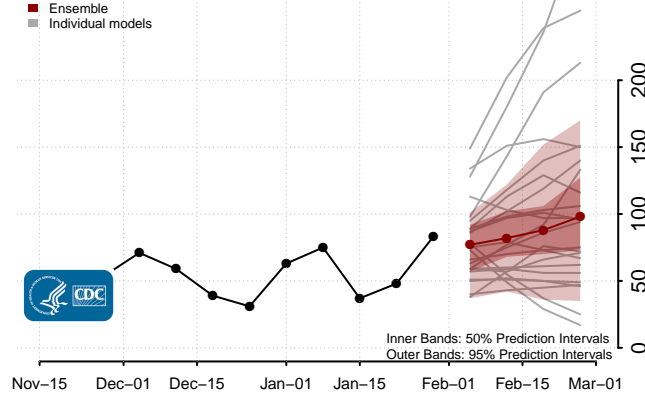
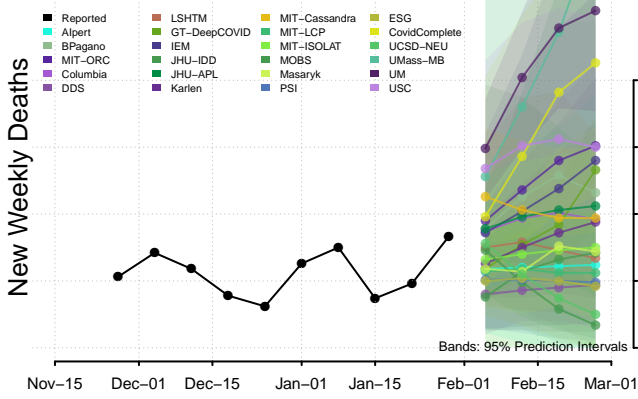
Guam



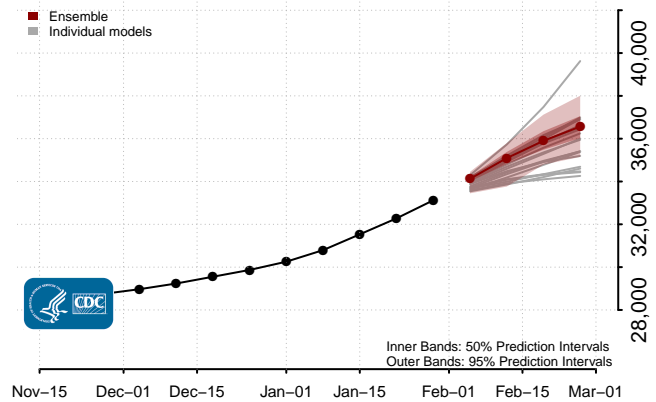
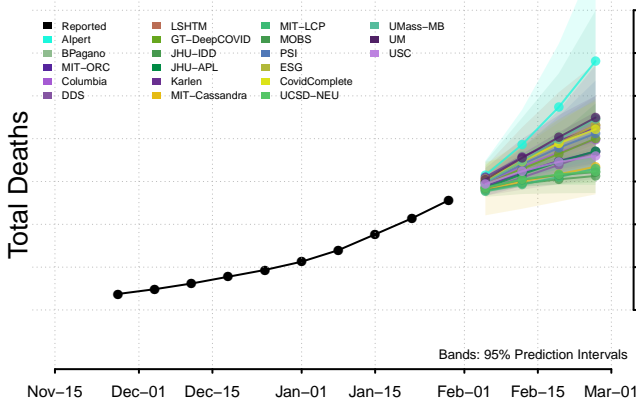
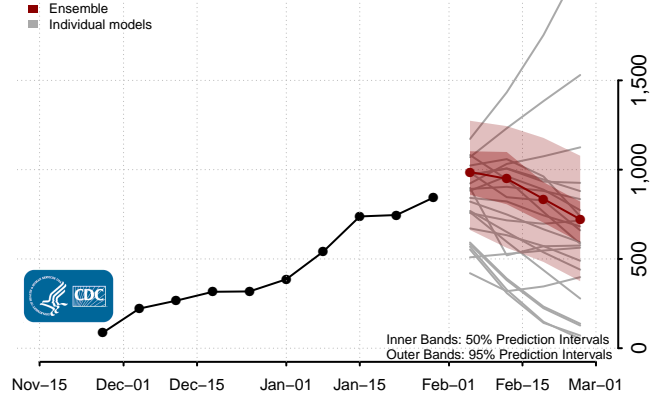
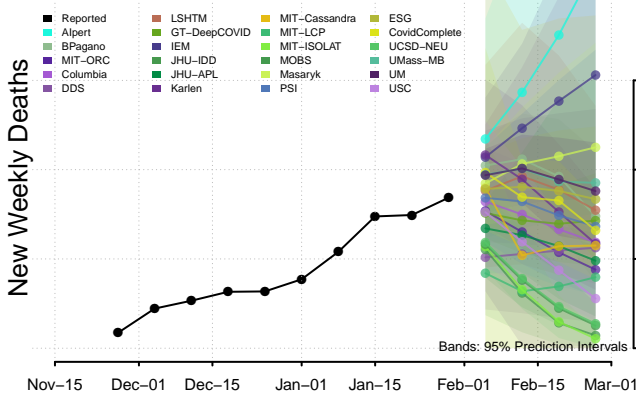
Hawaii



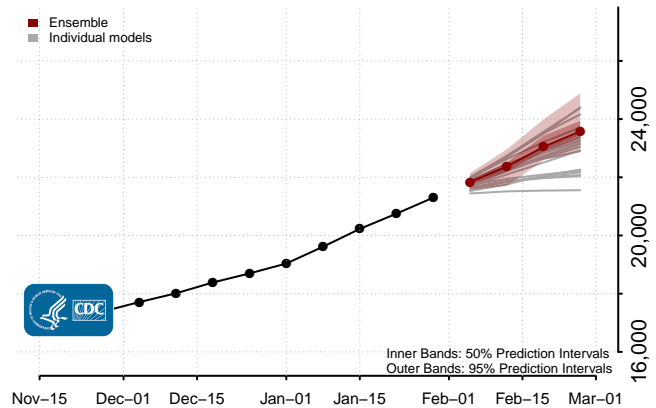
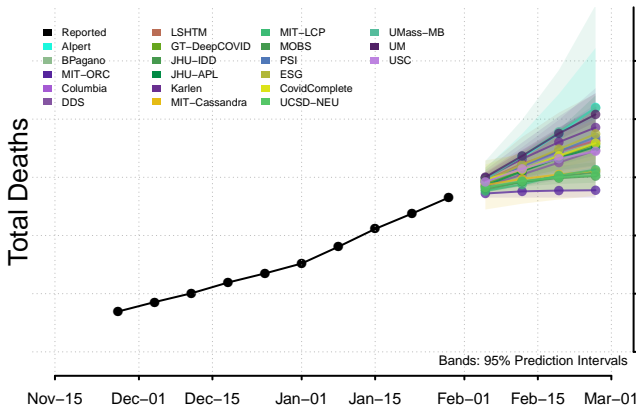
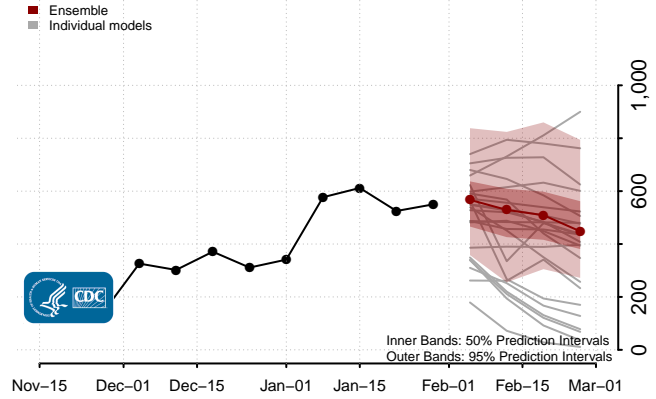
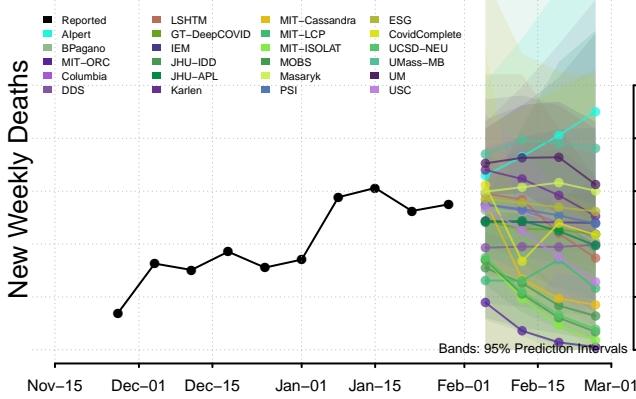
Idaho



Illinois*

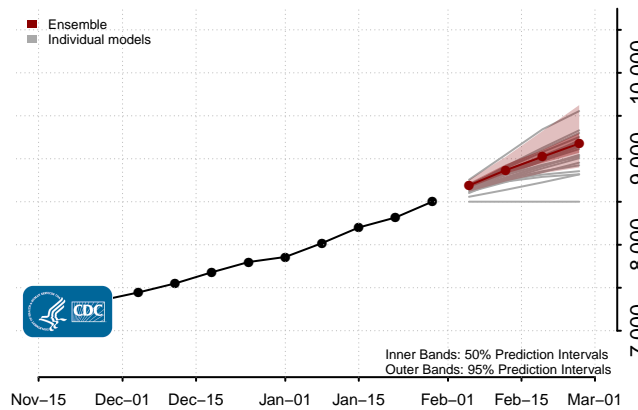
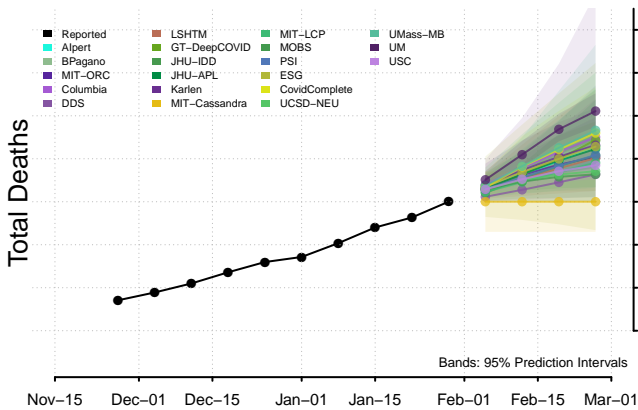
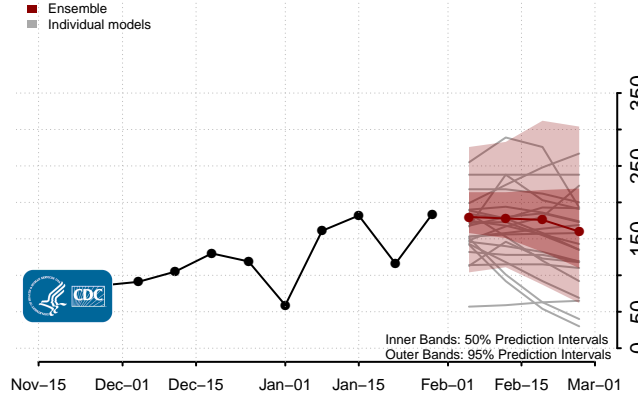
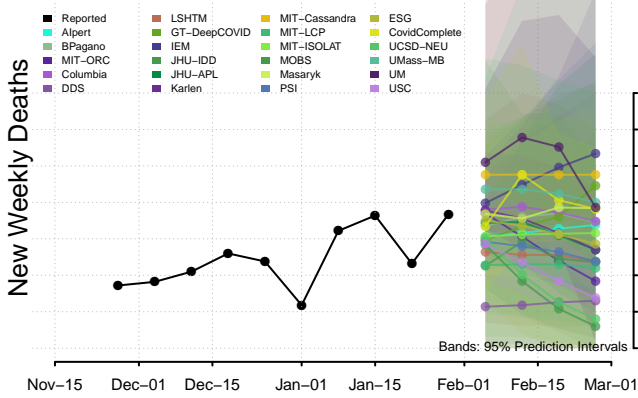


Indiana

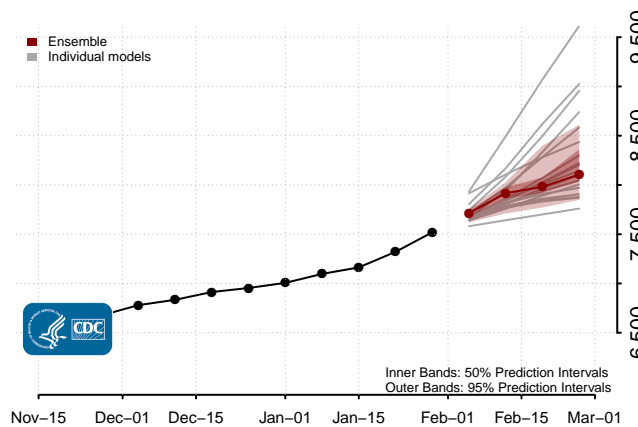
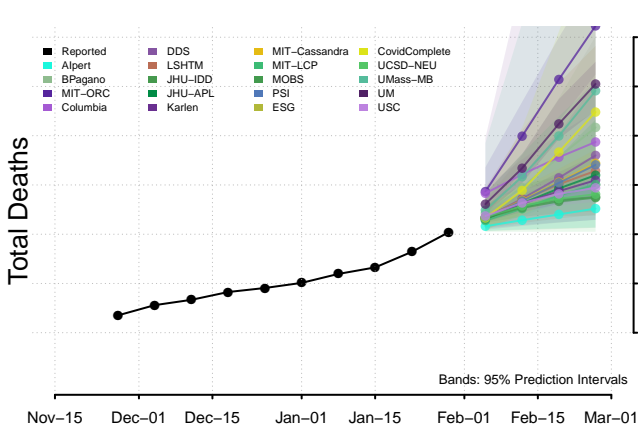
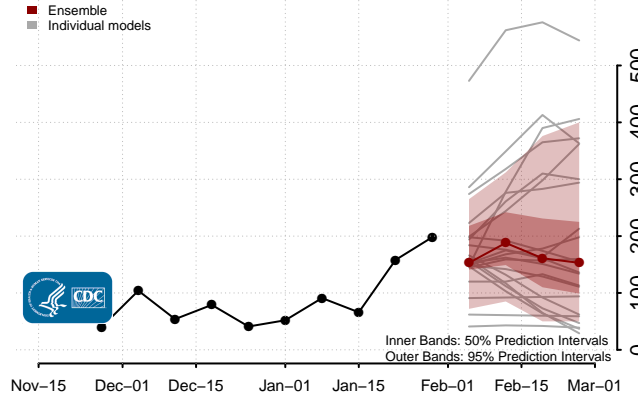
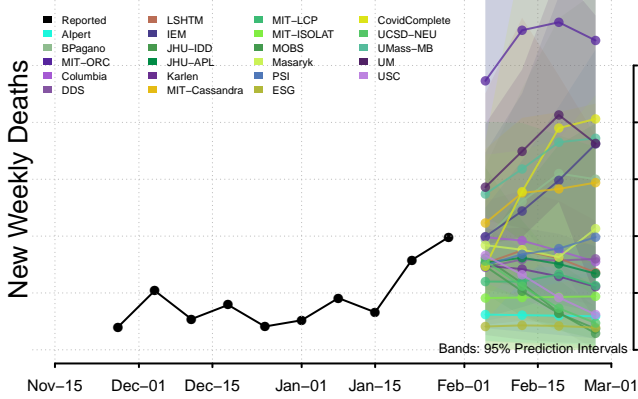


*New weekly deaths may decrease in this location over the next four weeks. For these locations, the ensemble forecast indicates a probability of 0.75 or greater that fewer deaths will be reported in week four of the forecast than in the last reported week.

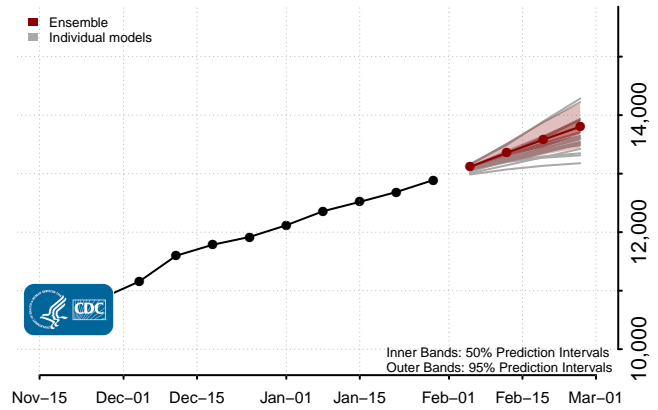
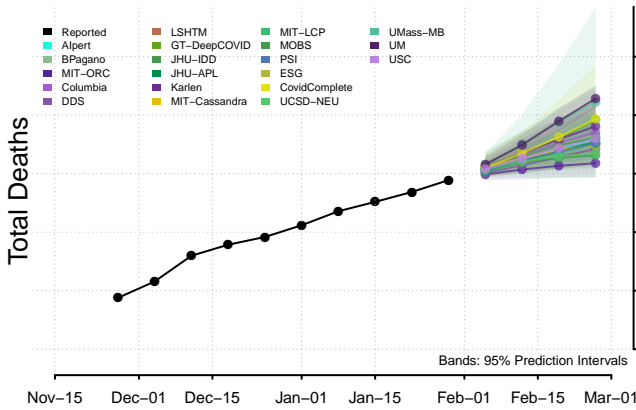
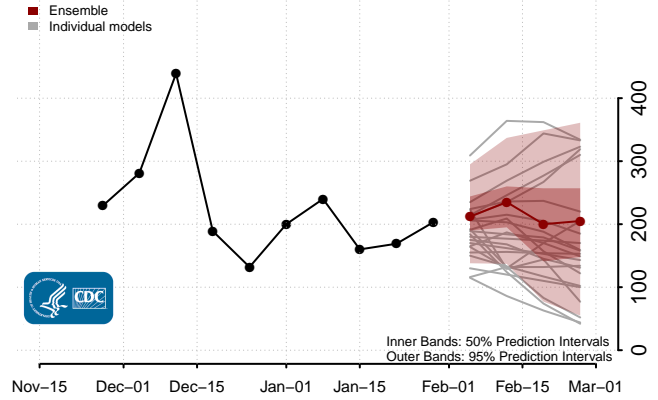
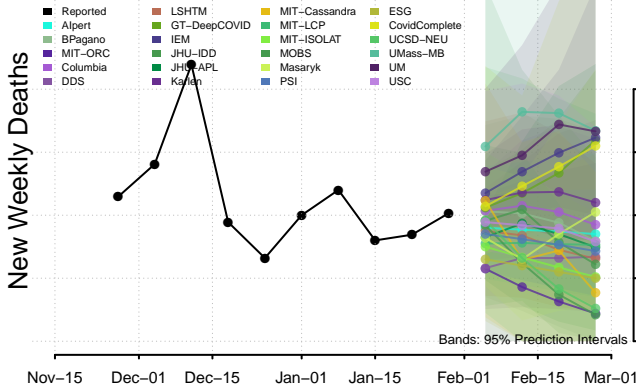
Iowa



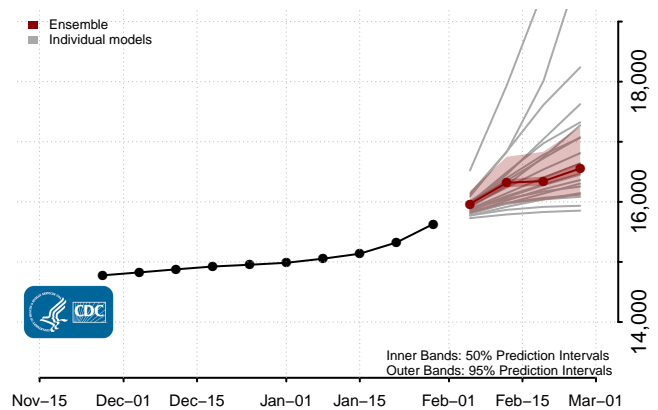
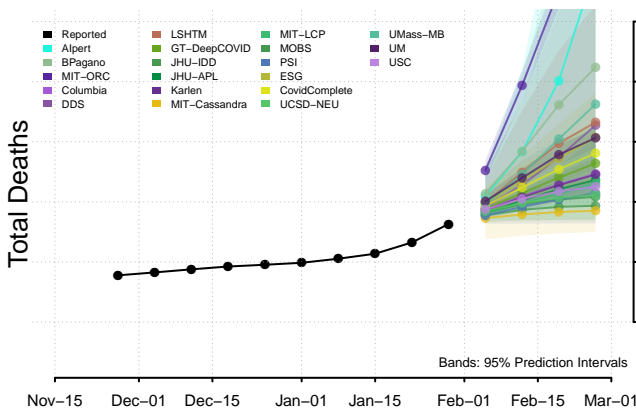
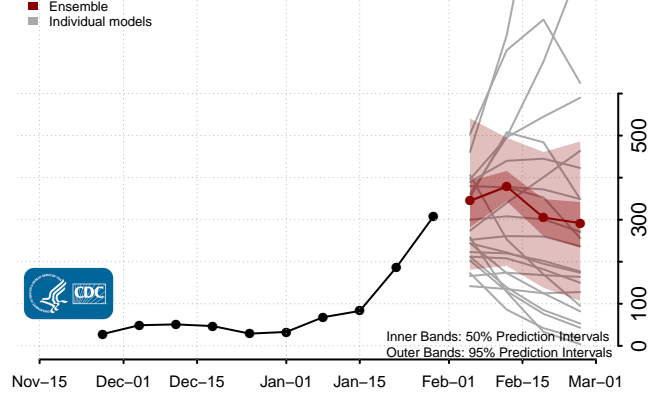
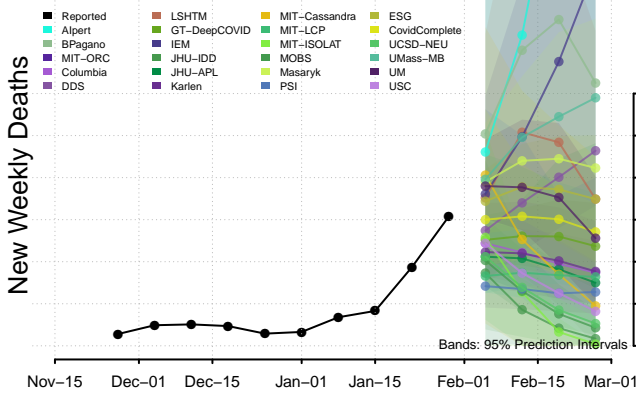
Kansas



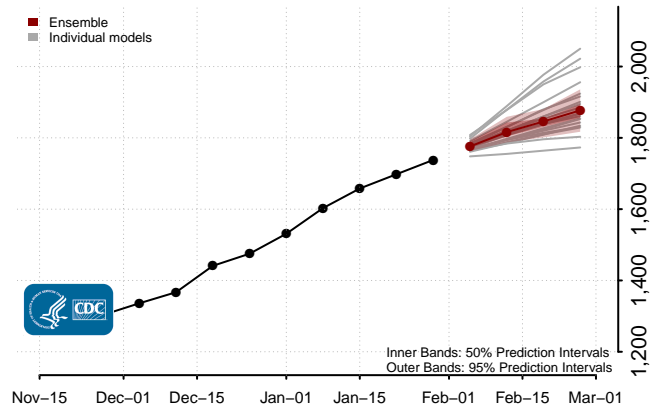
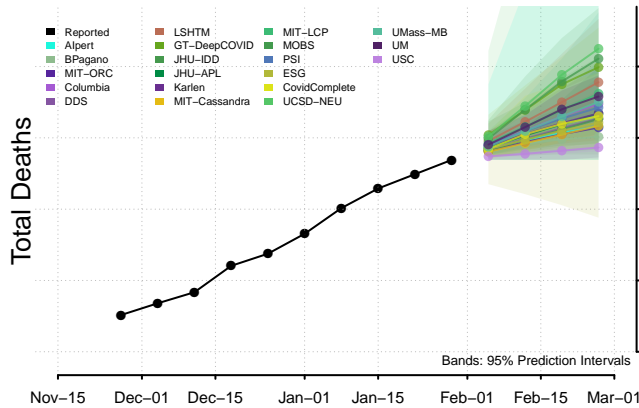
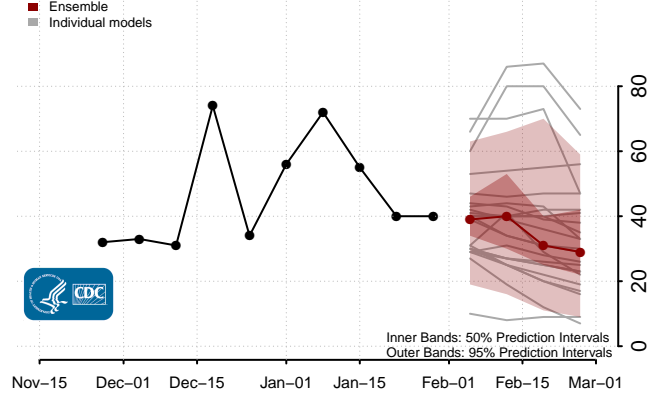
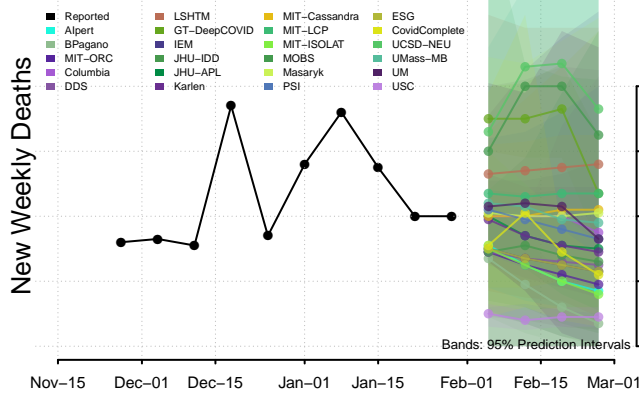
Kentucky



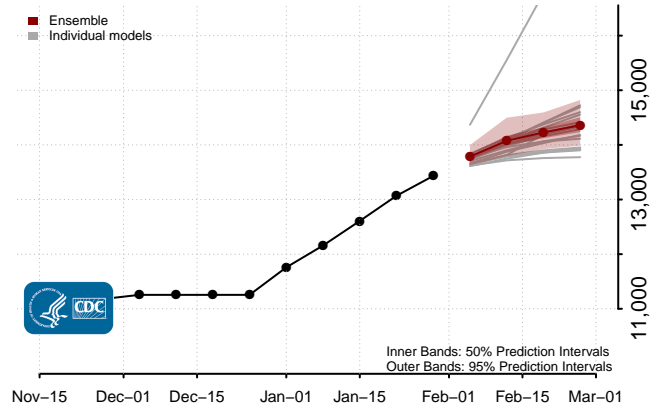
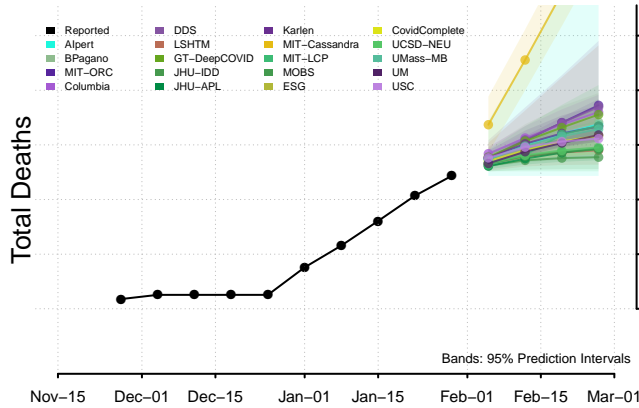
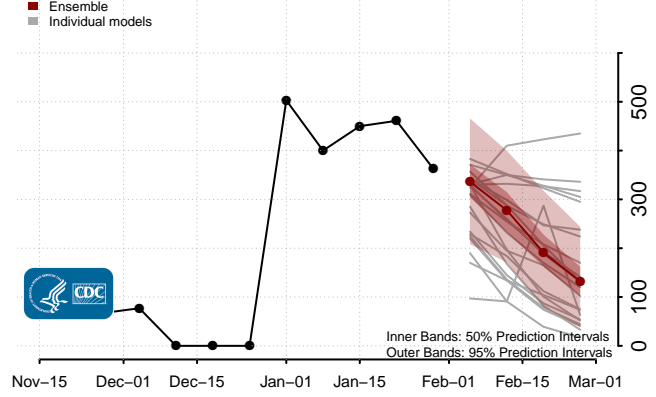
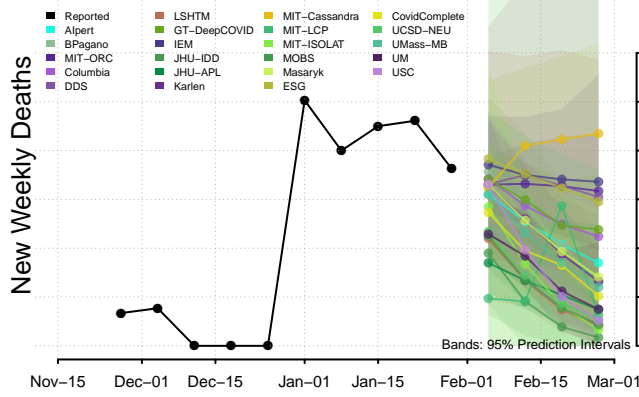
Louisiana



Maine

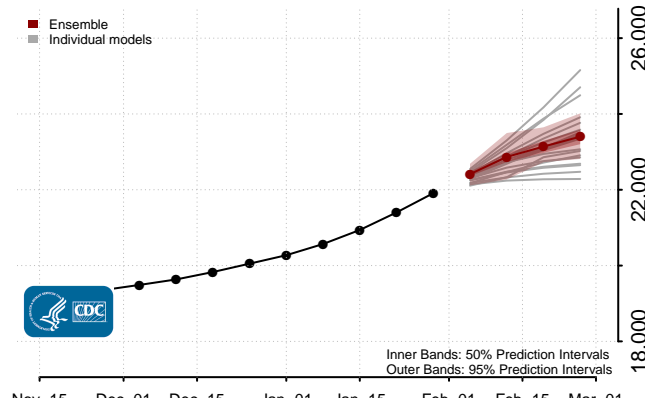
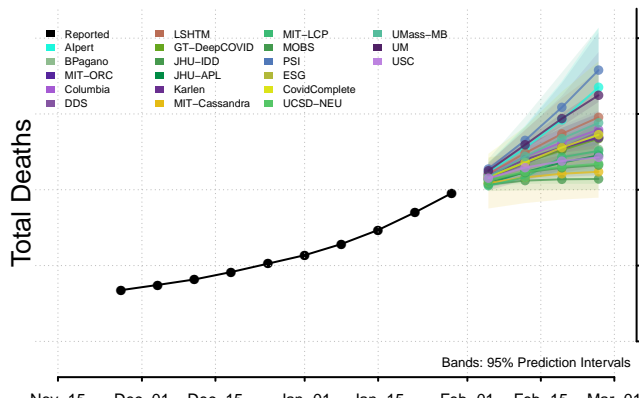
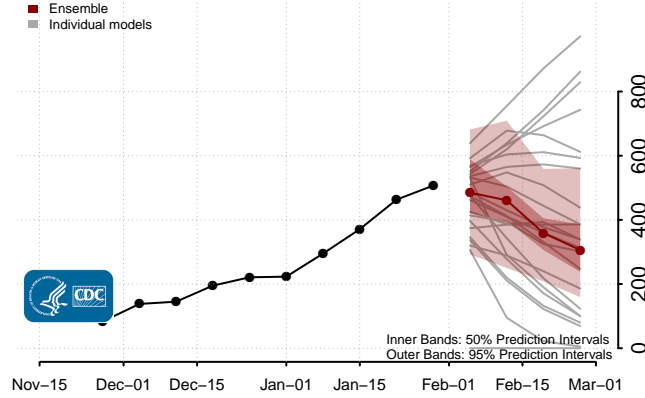
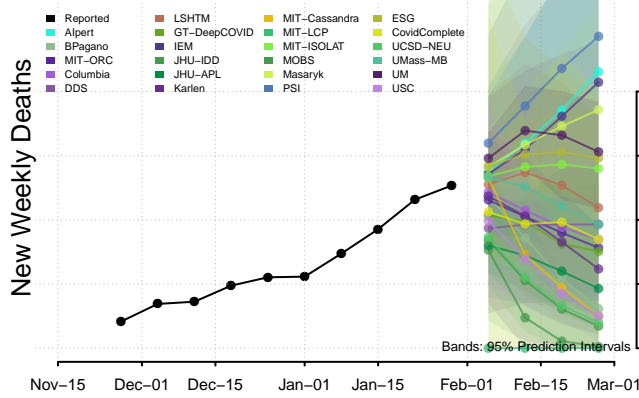


Maryland*

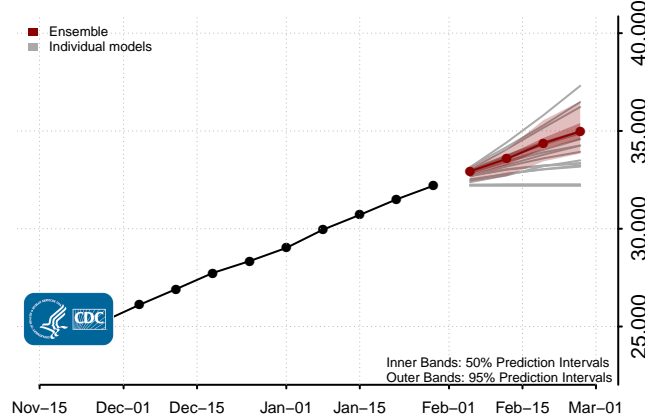
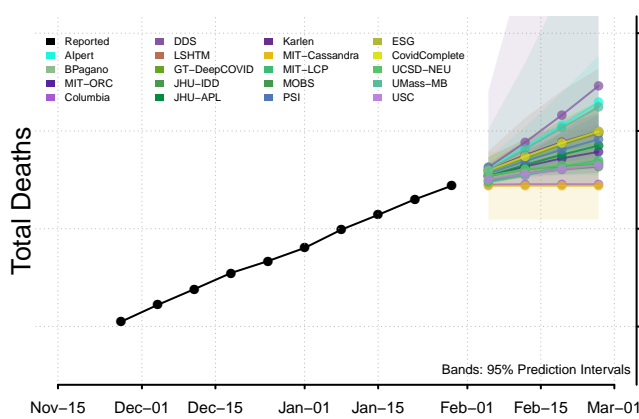
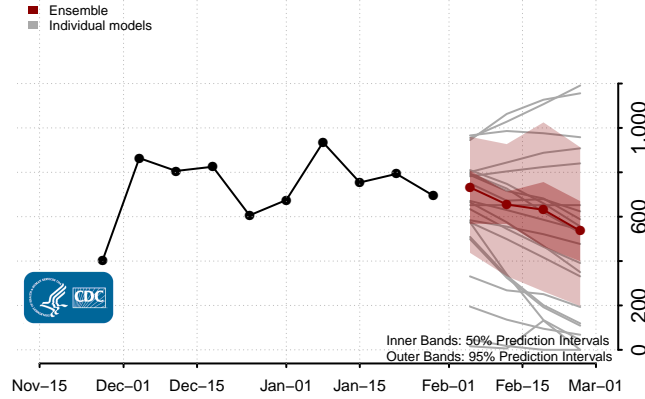
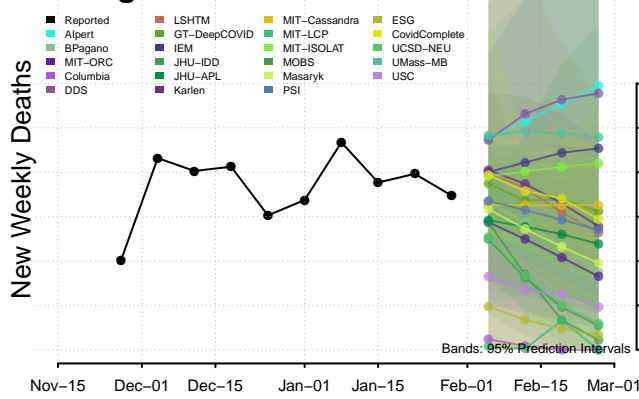


*New weekly deaths may decrease in this location over the next four weeks. For these locations, the ensemble forecast indicates a probability of 0.75 or greater that fewer deaths will be reported in week four of the forecast than in the last reported week.

Massachusetts*

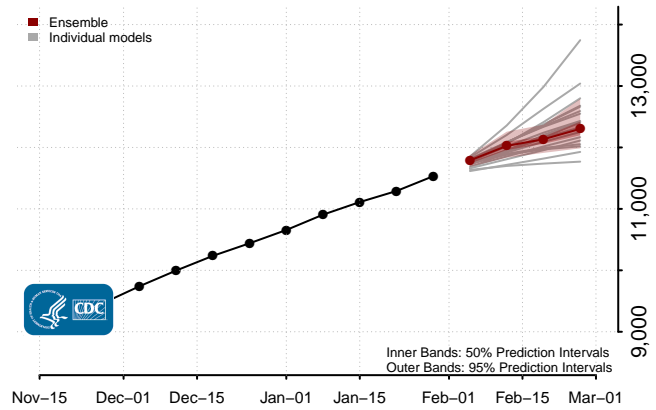
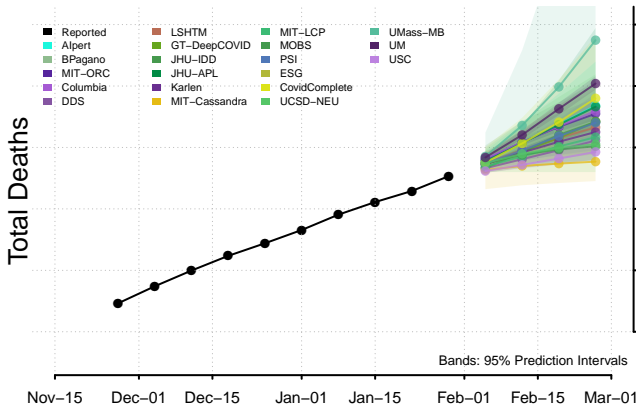
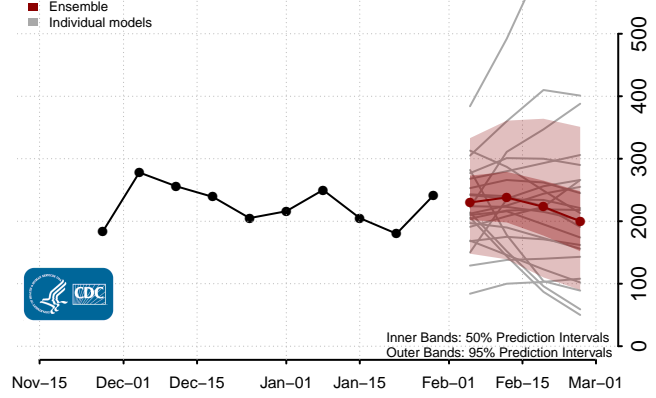
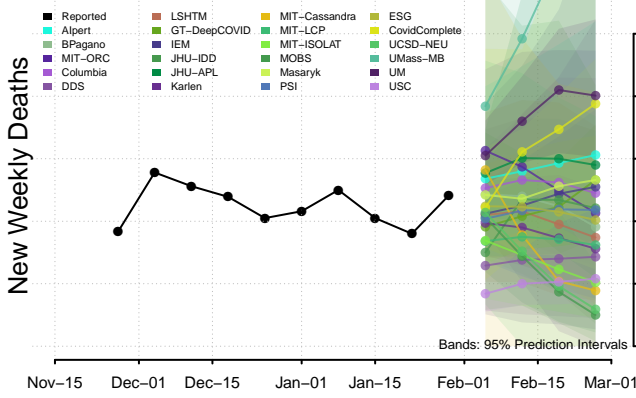


Michigan*

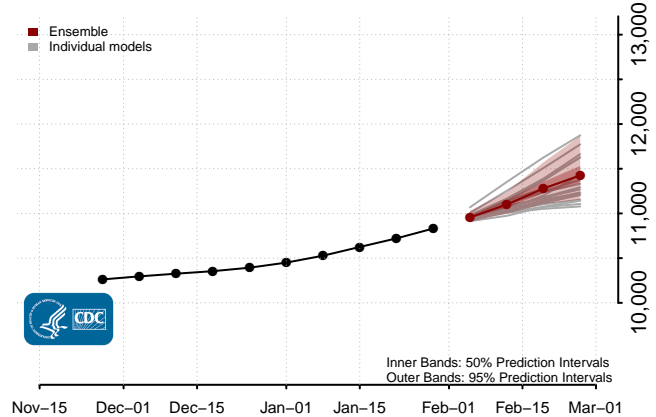
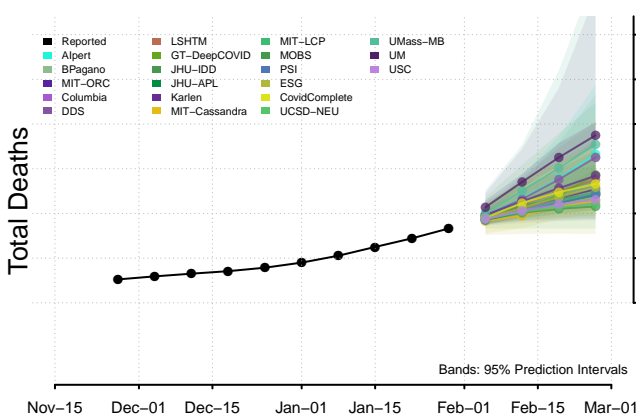
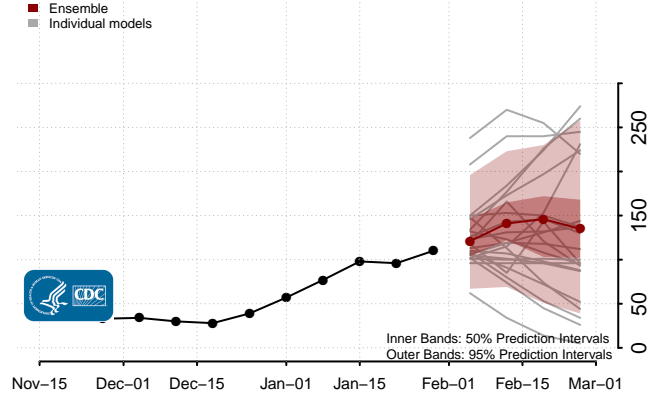
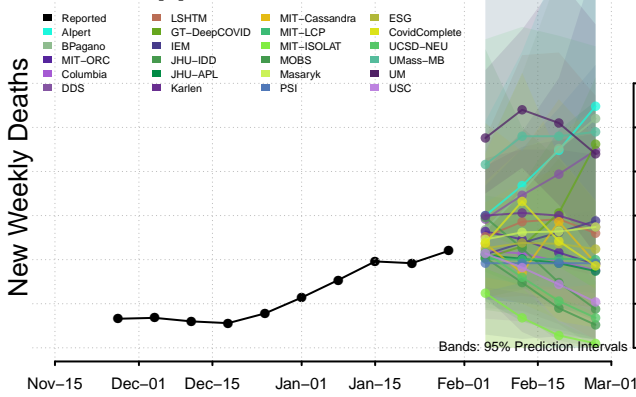


*New weekly deaths may decrease in this location over the next four weeks. For these locations, the ensemble forecast indicates a probability of 0.75 or greater that fewer deaths will be reported in week four of the forecast than in the last reported week.

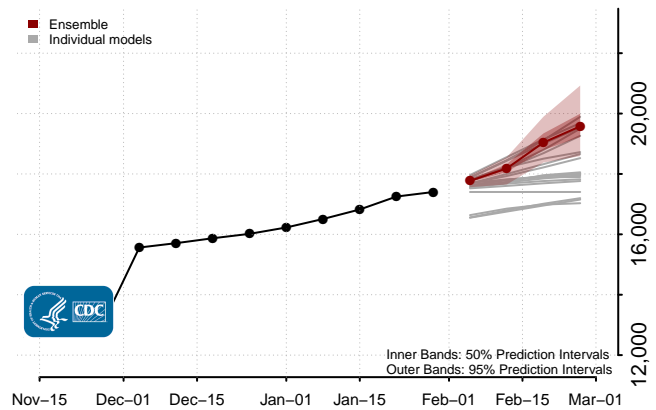
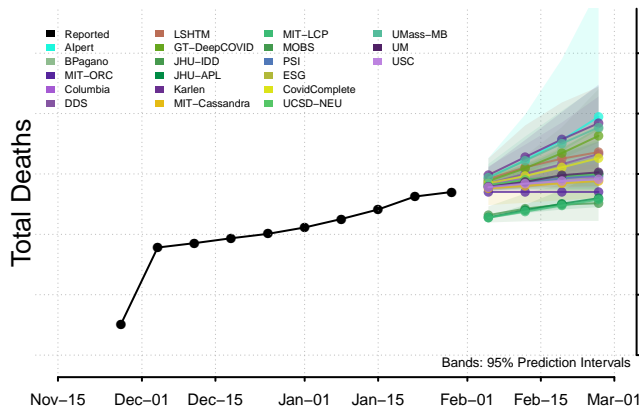
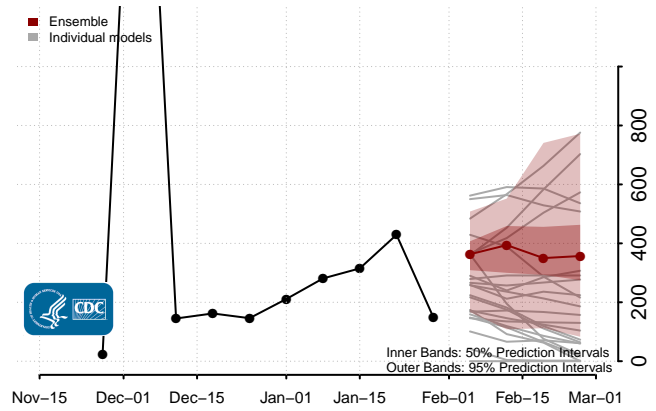
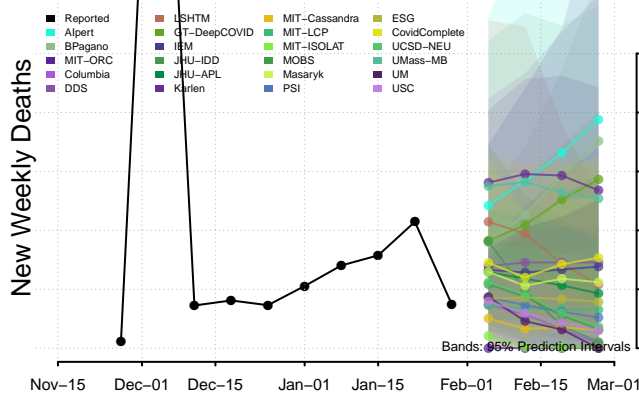
Minnesota



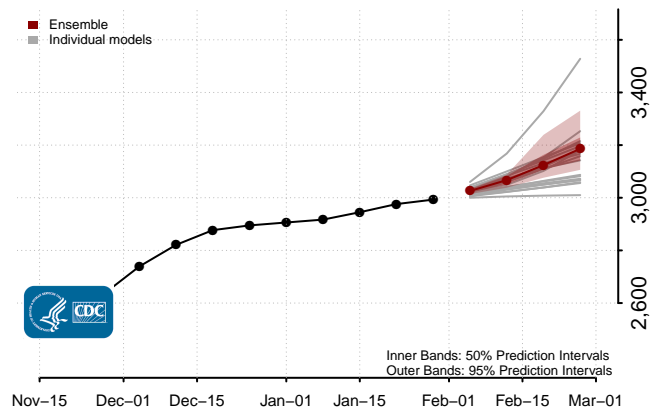
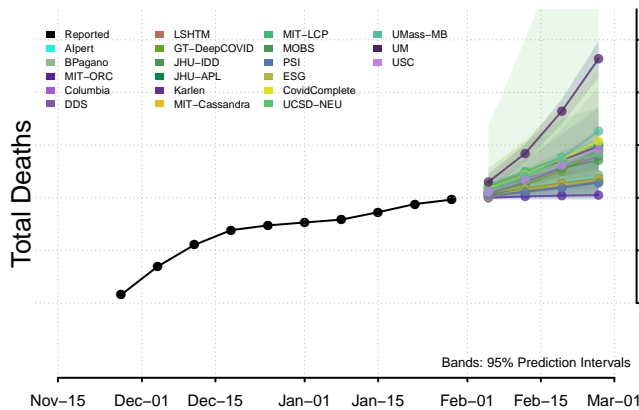
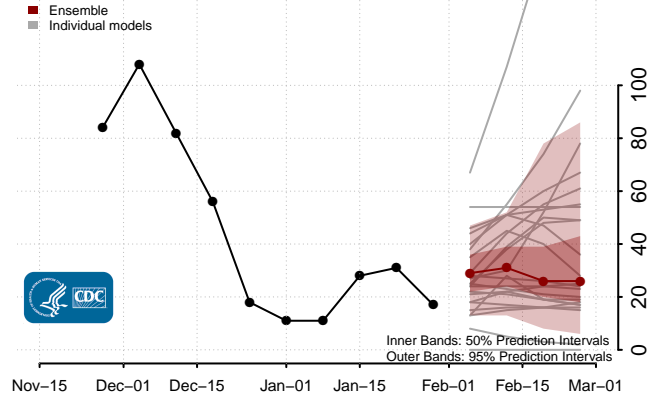
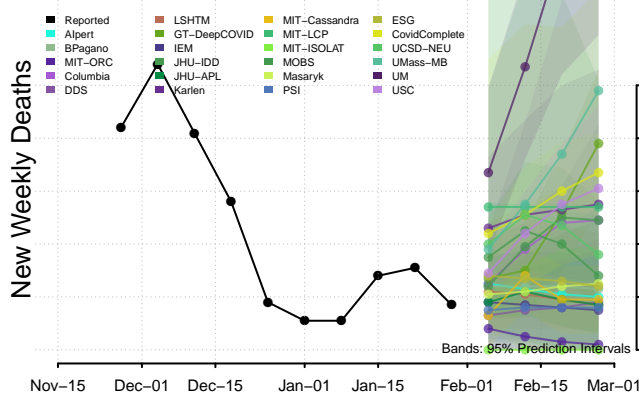
Mississippi



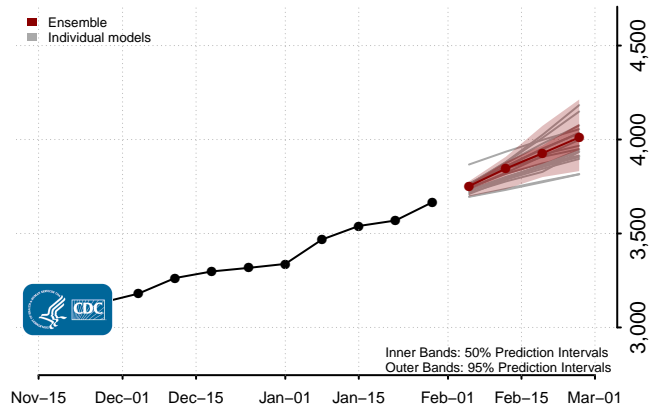
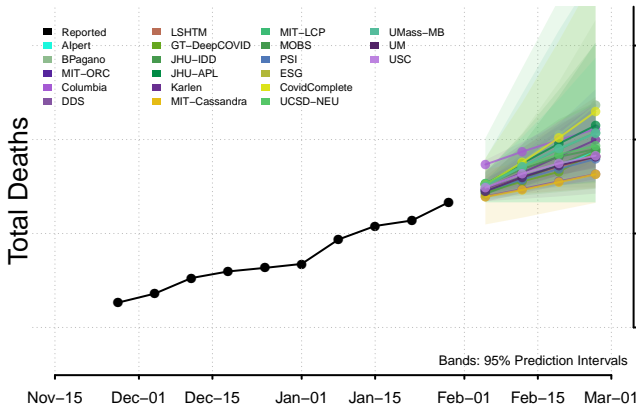
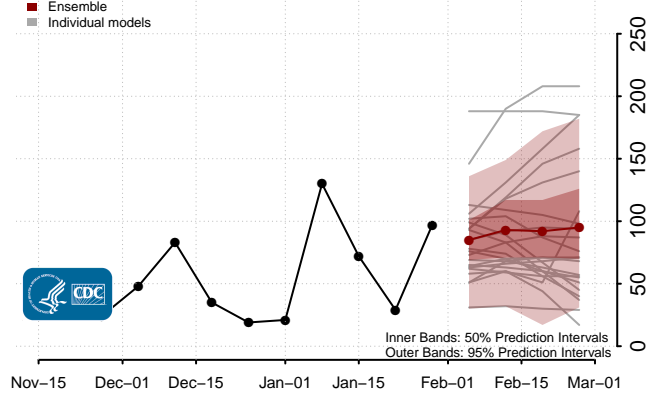
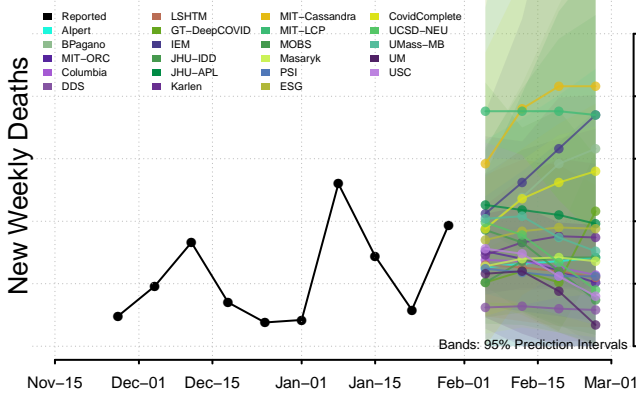
Missouri



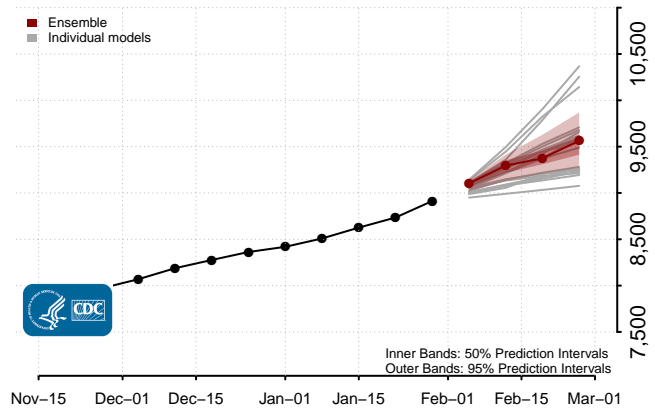
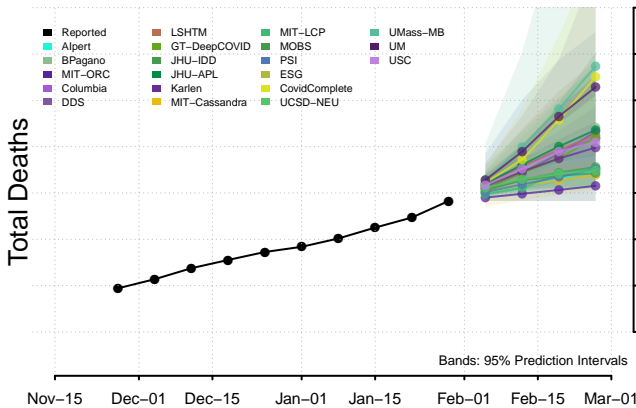
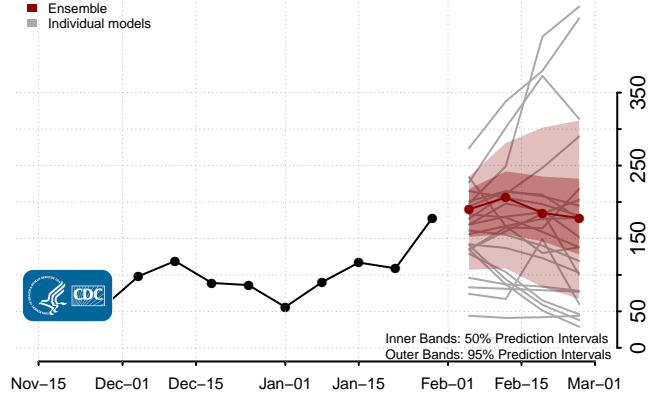
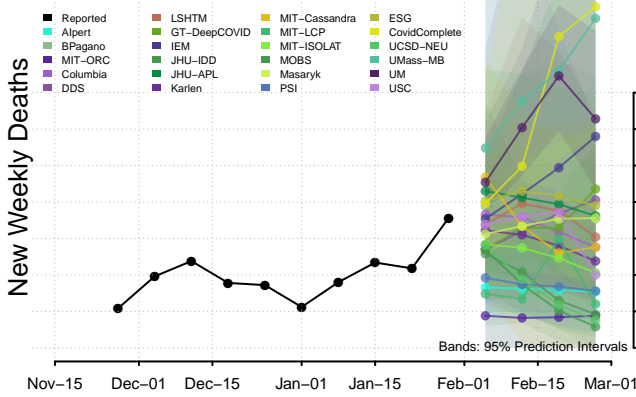
Montana



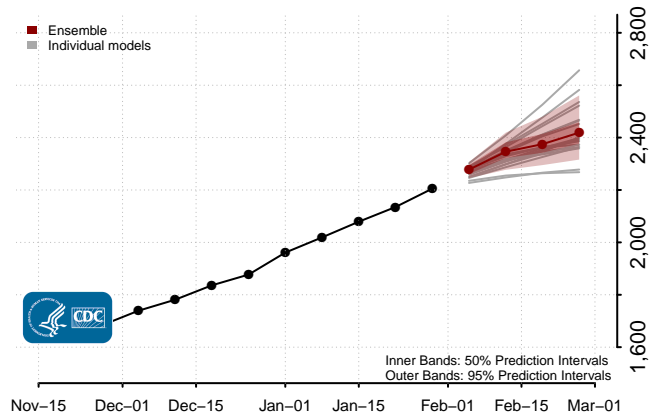
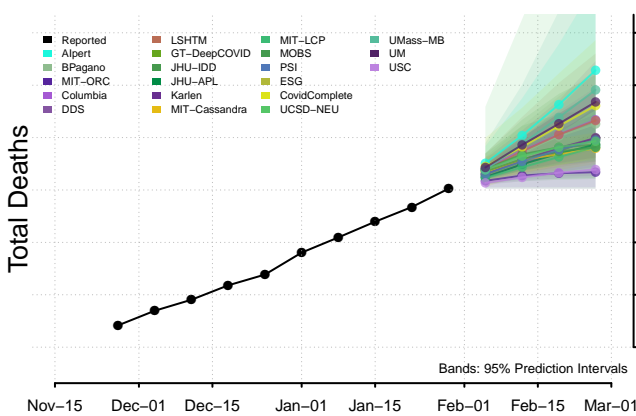
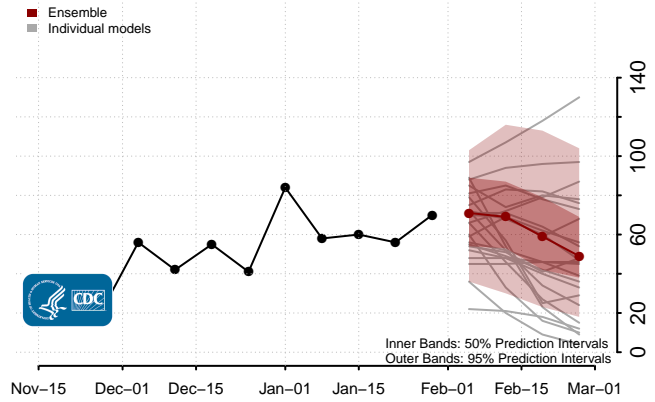
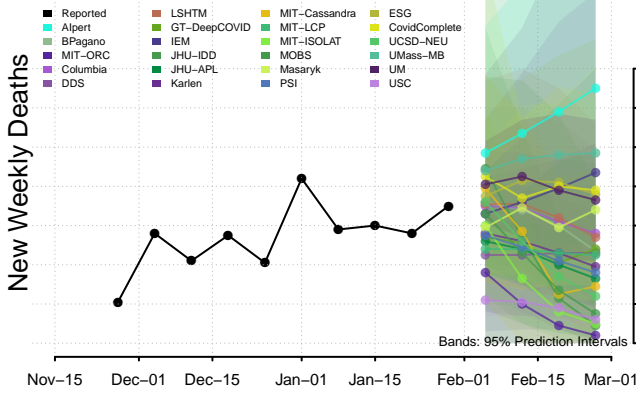
Nebraska



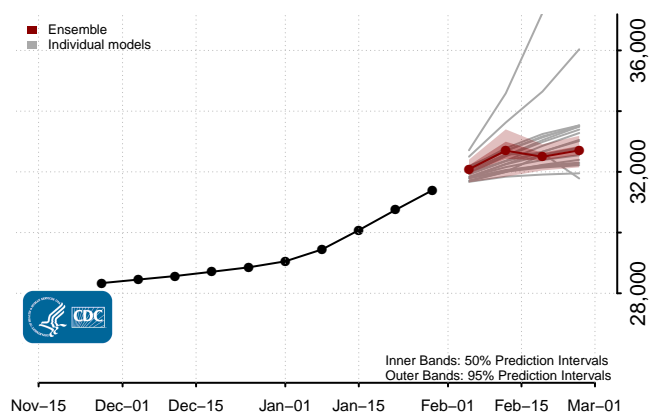
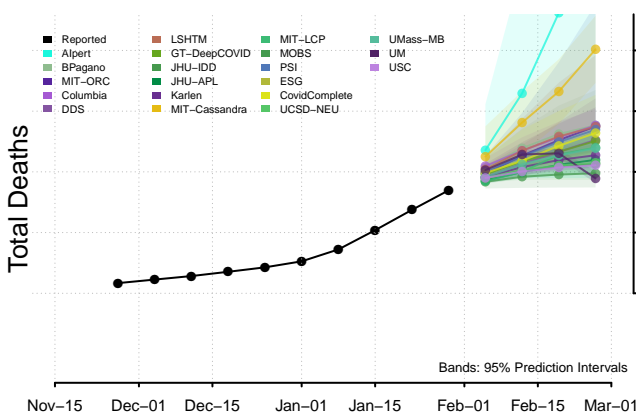
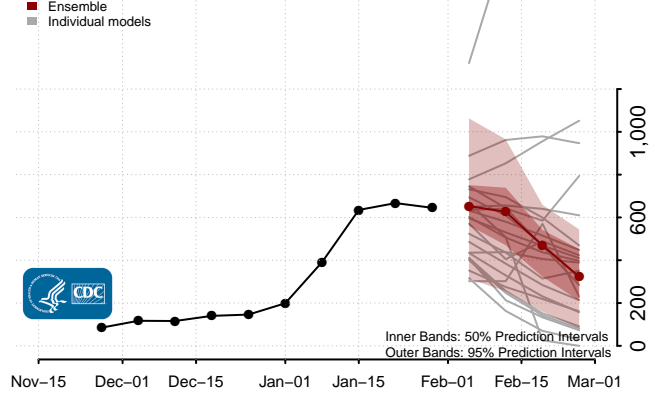
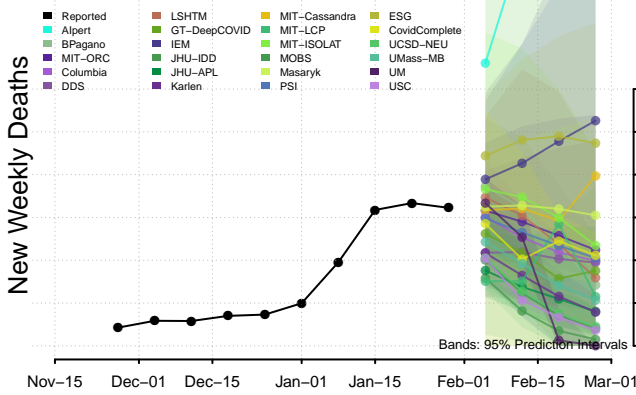
Nevada



New Hampshire

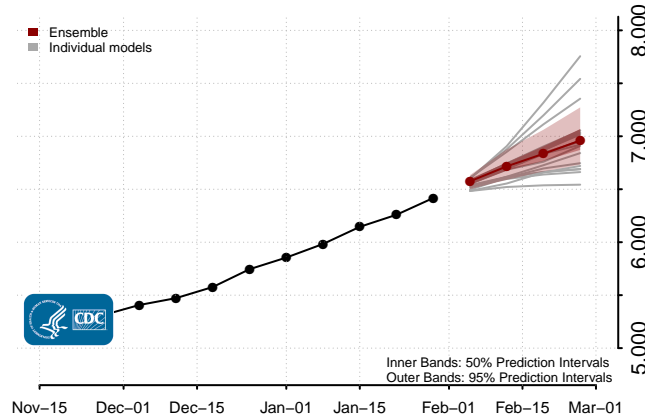
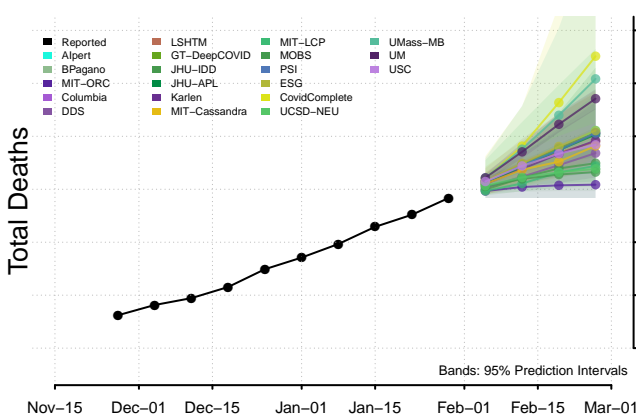
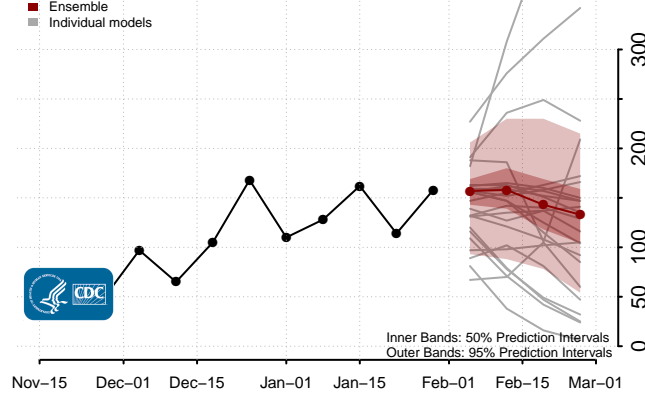
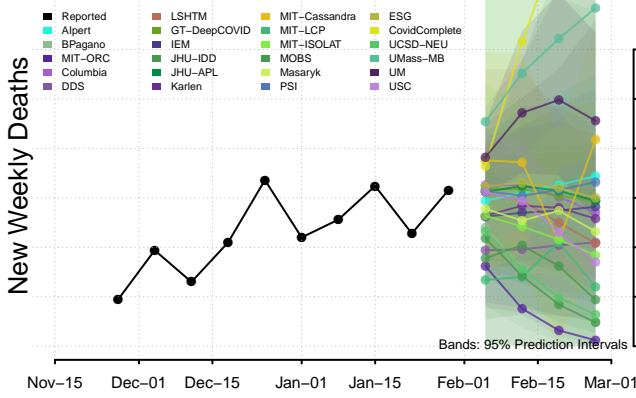


New Jersey*

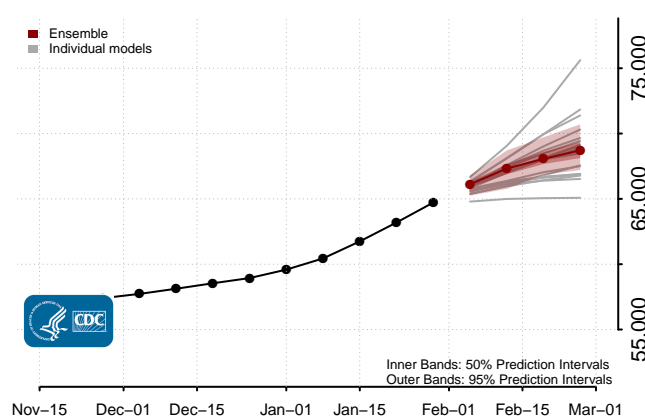
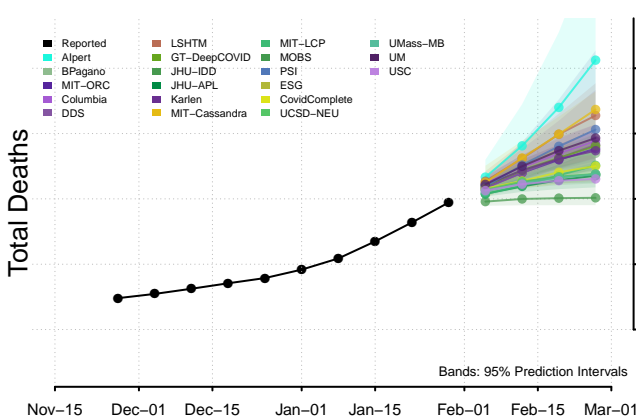
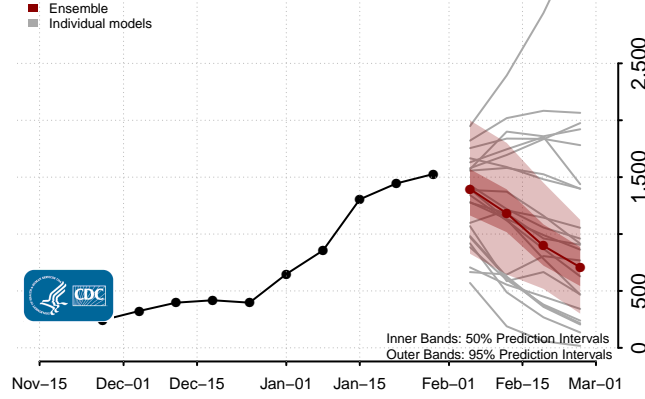
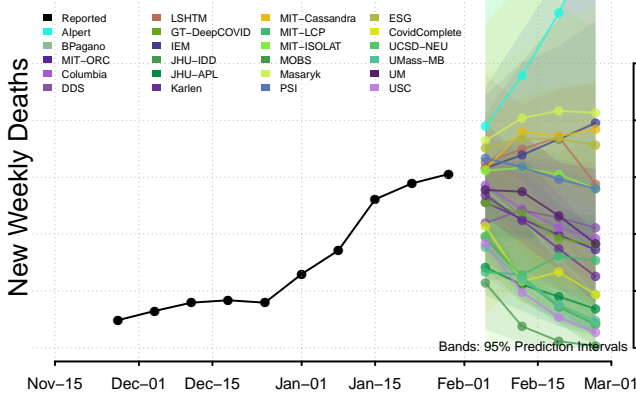


*New weekly deaths may decrease in this location over the next four weeks. For these locations, the ensemble forecast indicates a probability of 0.75 or greater that fewer deaths will be reported in week four of the forecast than in the last reported week.

New Mexico

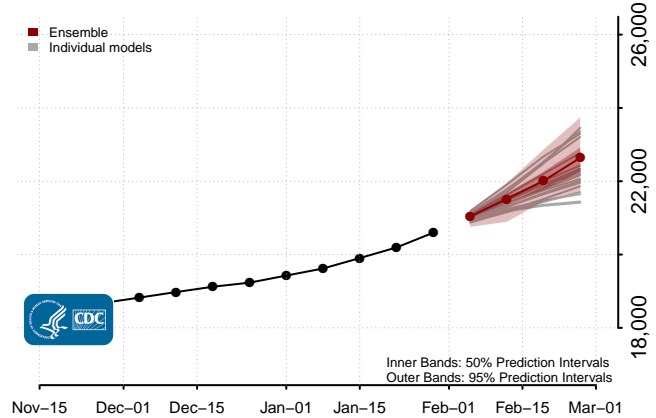
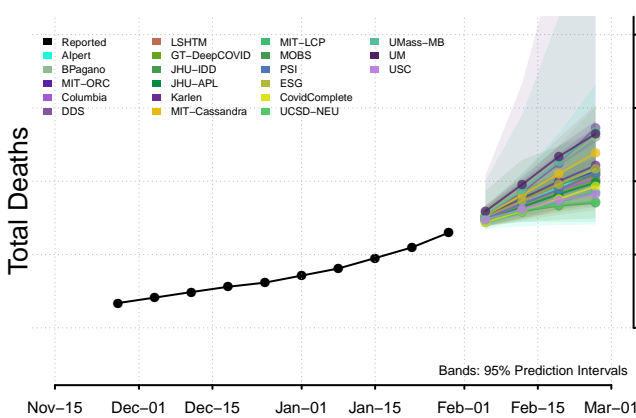
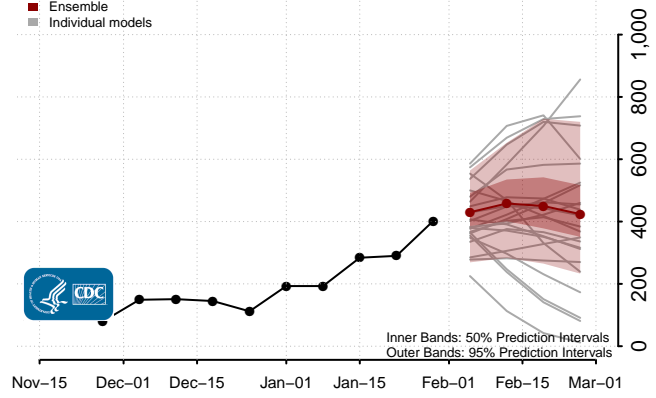
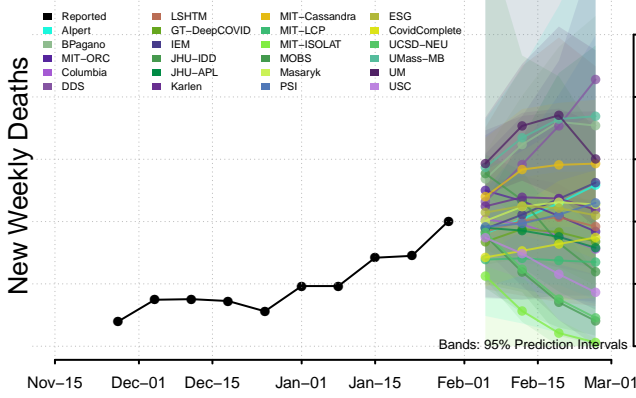


New York*

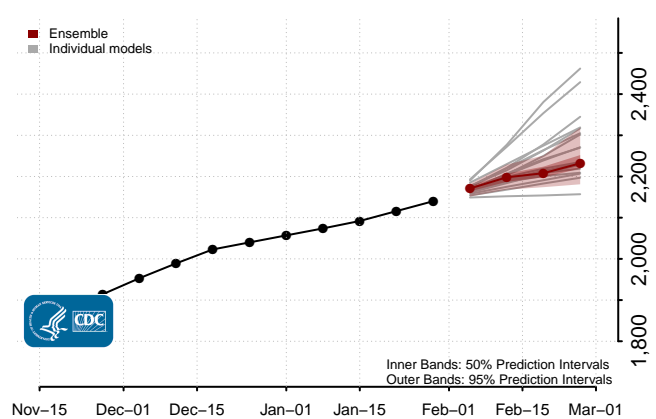
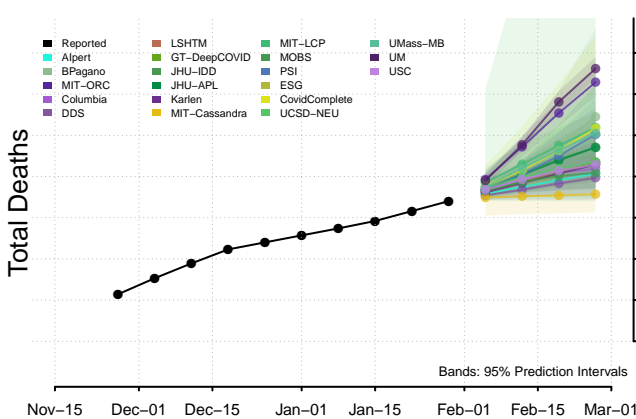
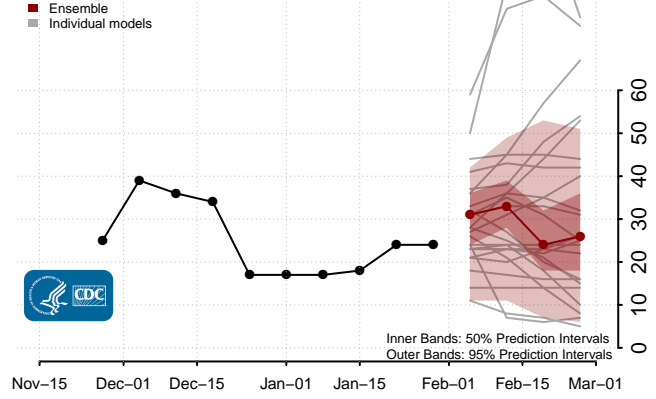
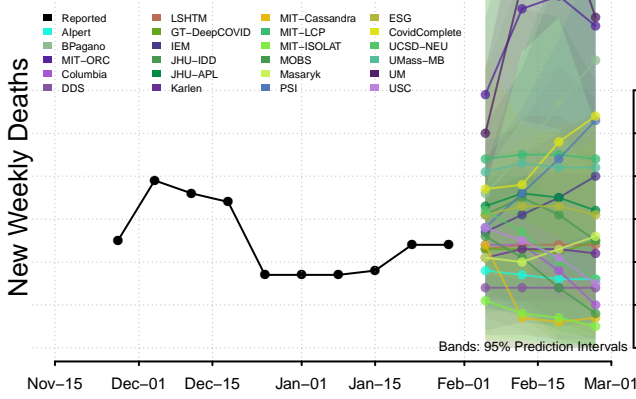


*New weekly deaths may decrease in this location over the next four weeks. For these locations, the ensemble forecast indicates a probability of 0.75 or greater that fewer deaths will be reported in week four of the forecast than in the last reported week.

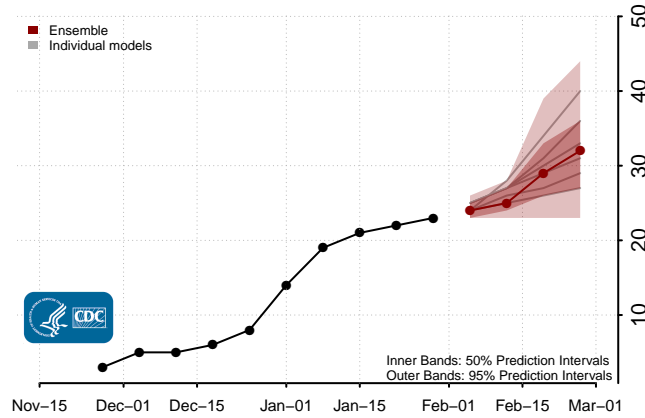
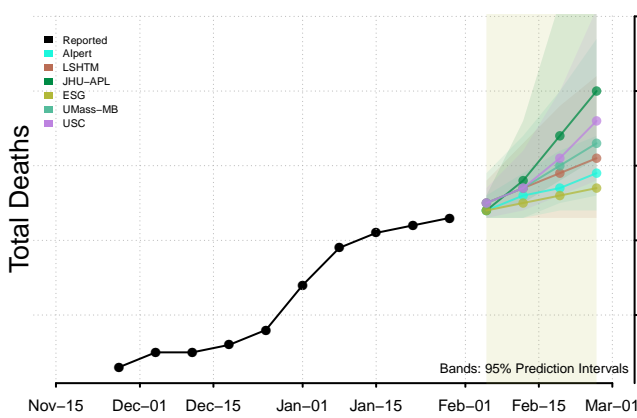
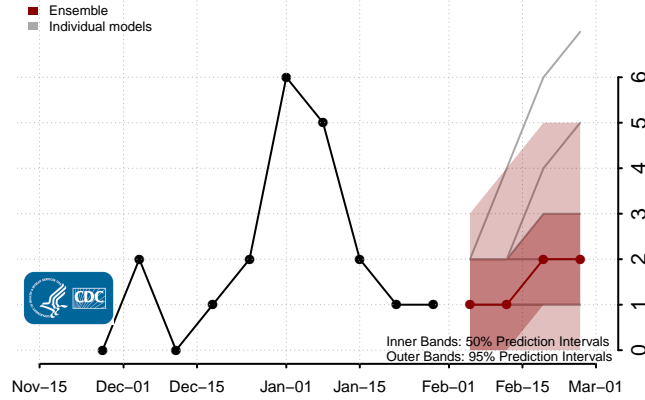
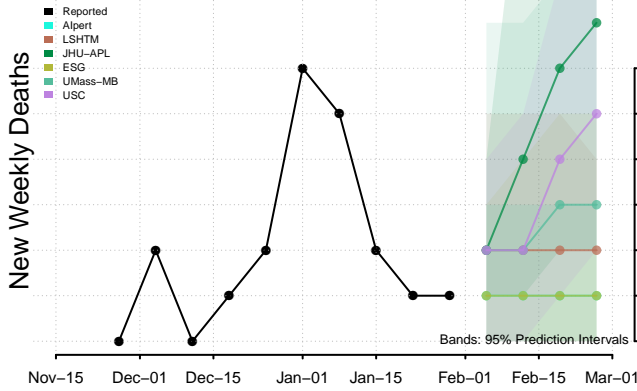
North Carolina



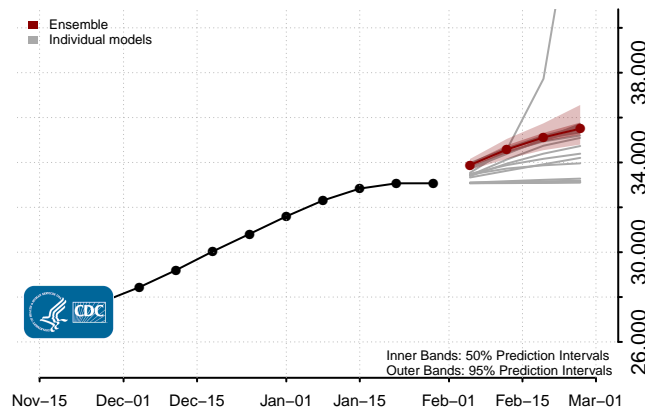
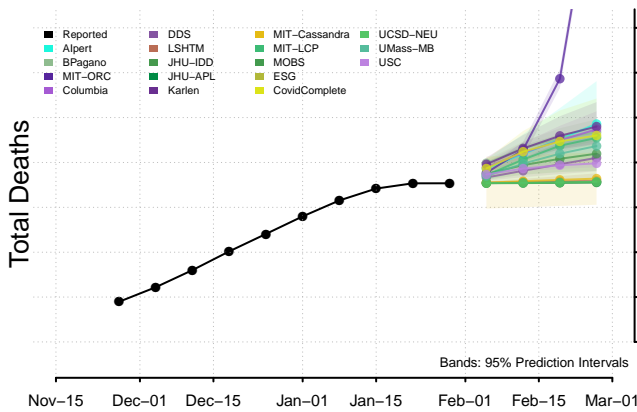
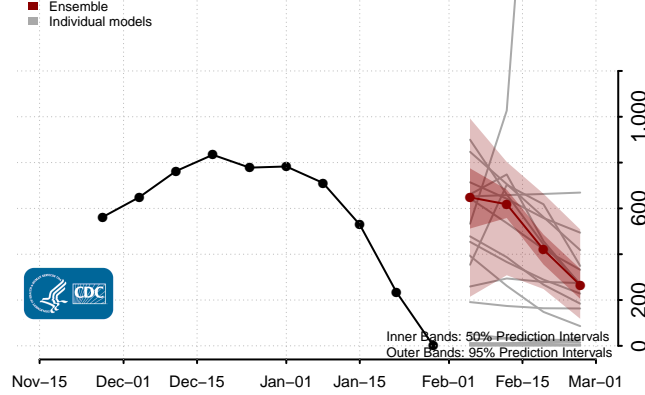
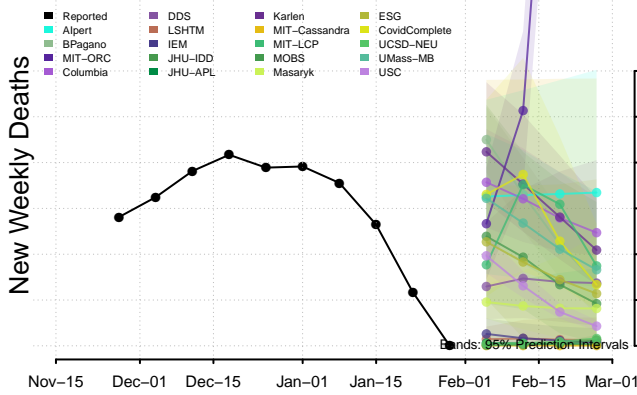
North Dakota



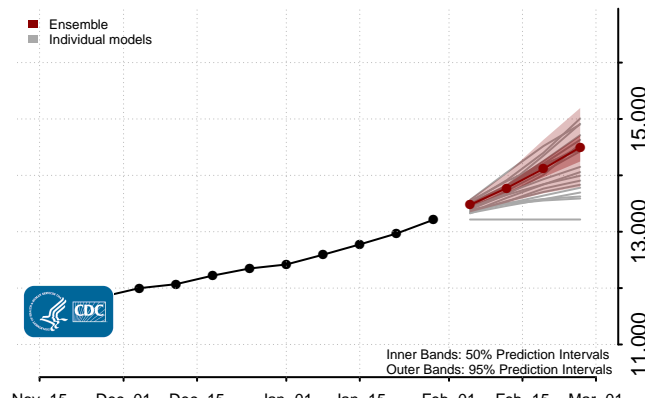
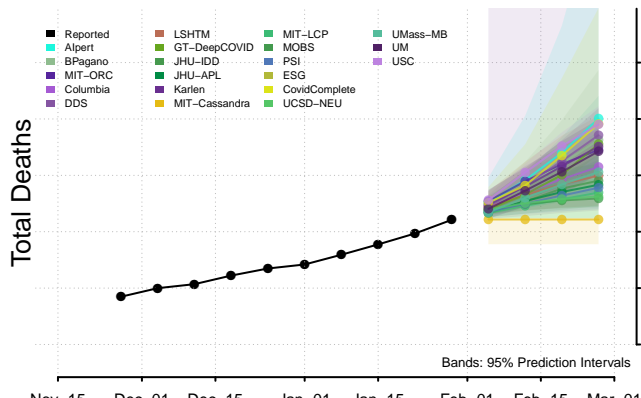
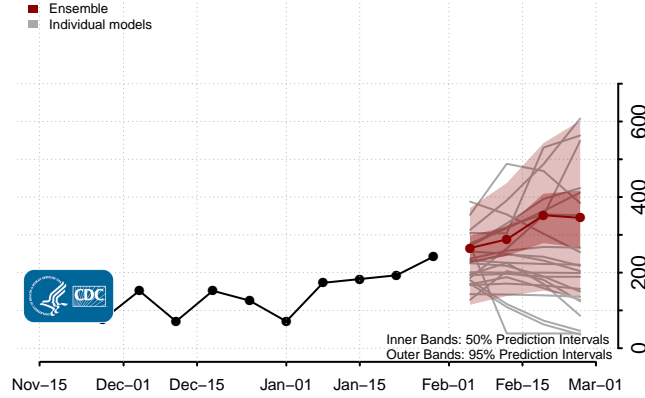
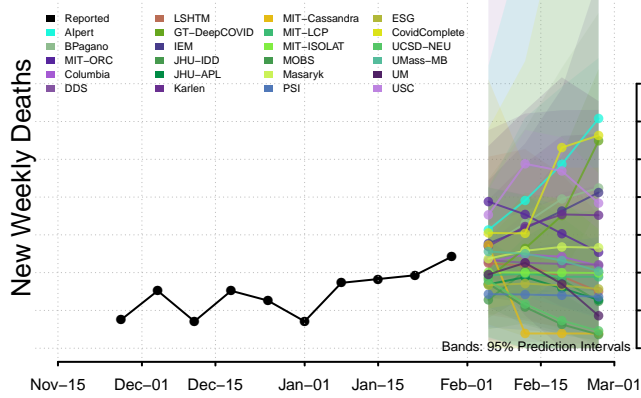
Northern Mariana Islands



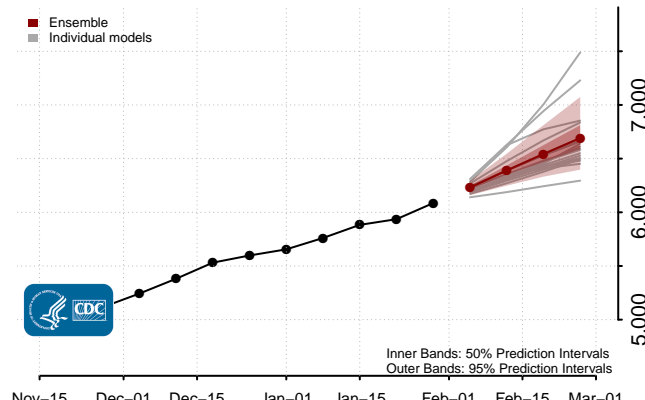
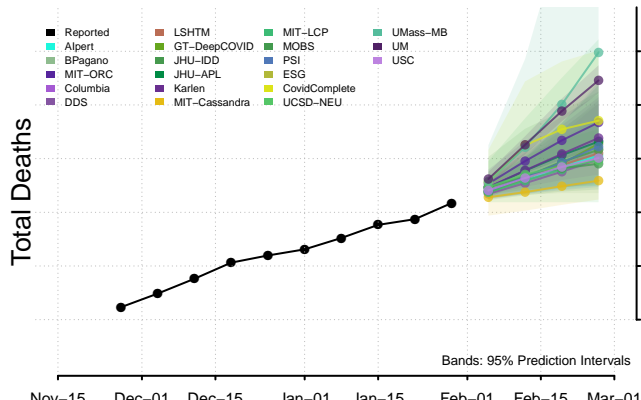
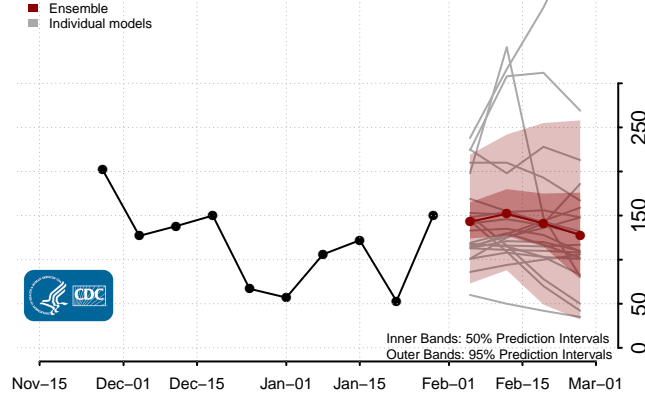
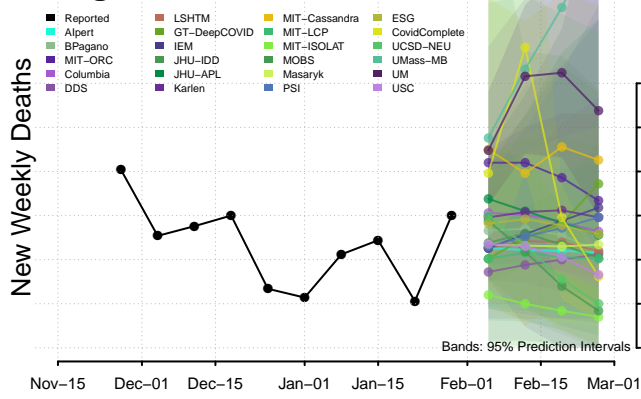
Ohio



Oklahoma**

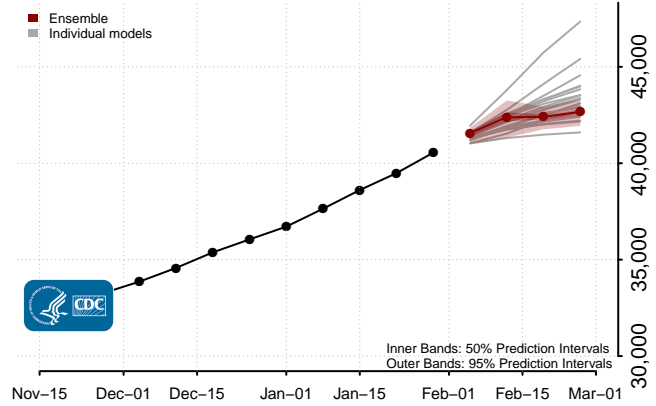
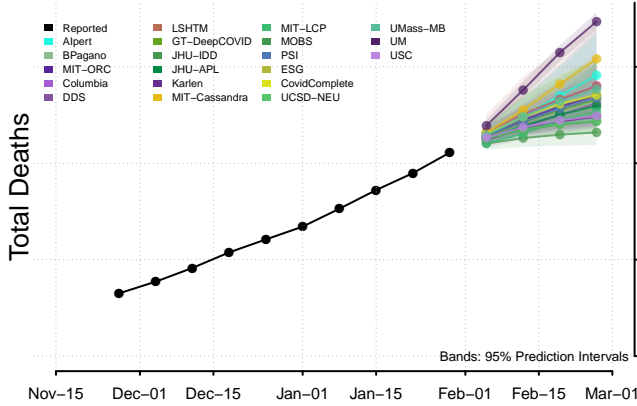
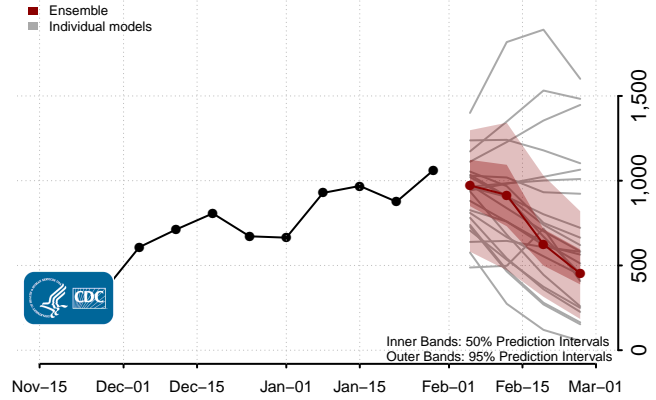
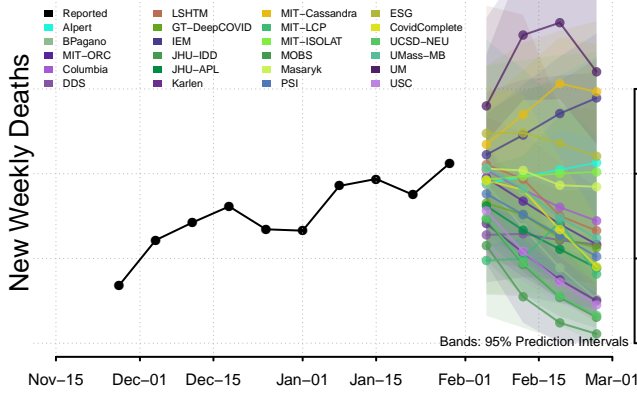


Oregon

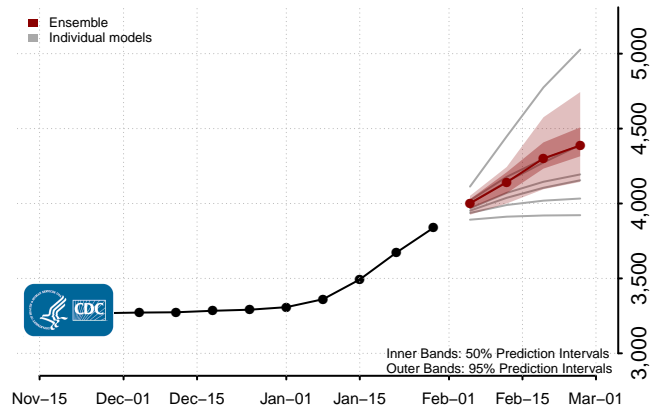
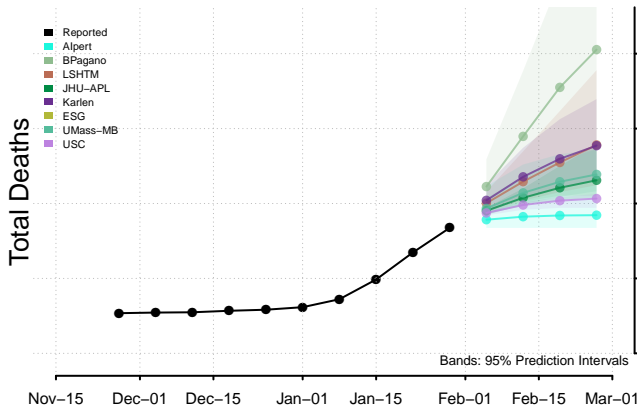
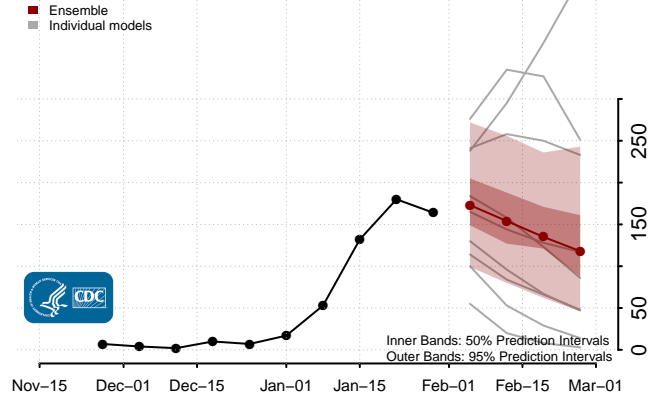
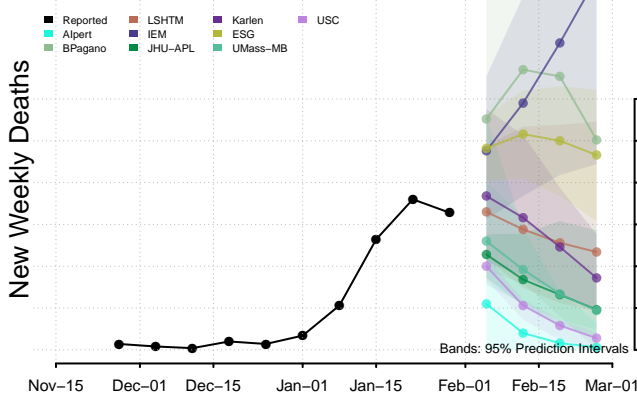


**New weekly deaths may increase in this location over the next four weeks. For these locations, the ensemble forecast indicates a probability of 0.75 or greater that more deaths will be reported in week four of the forecast than in the last reported week.

Pennsylvania*

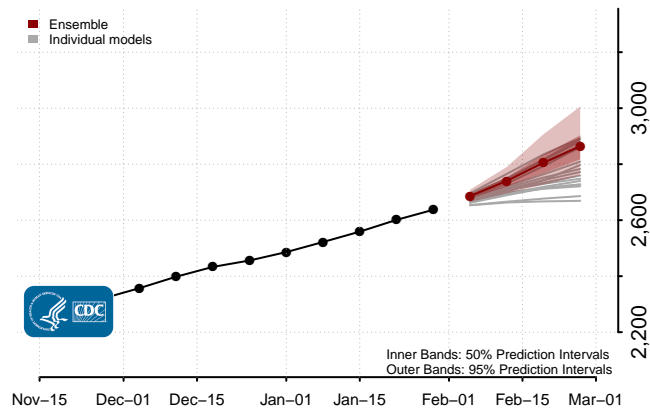
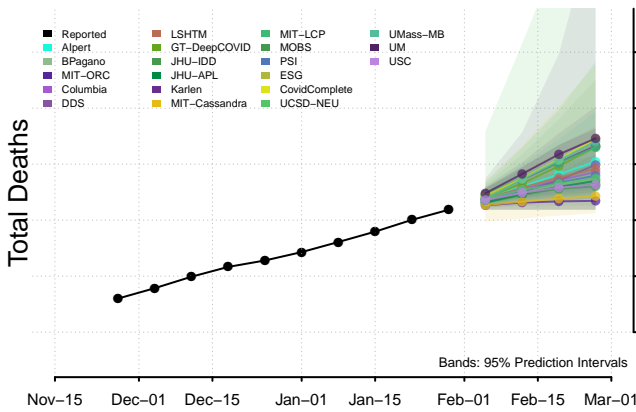
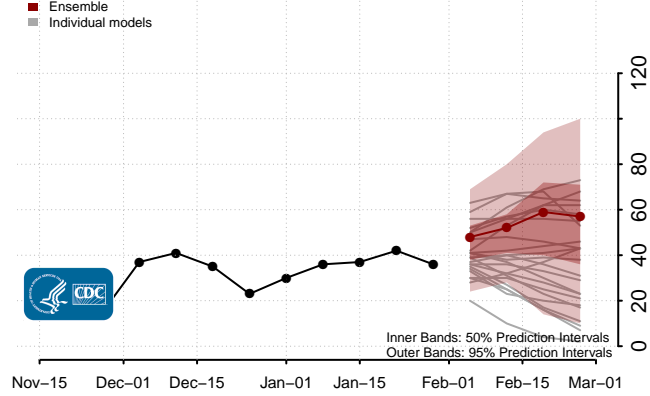
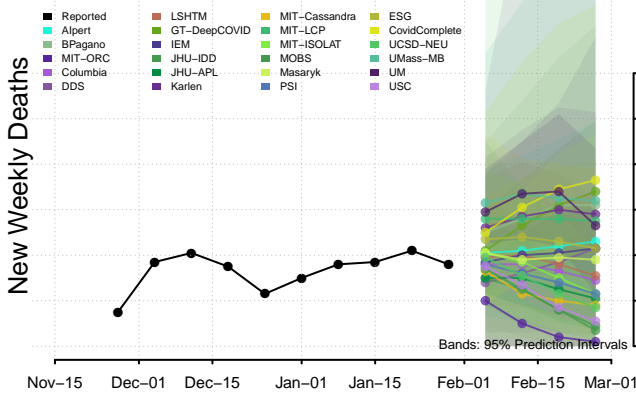


Puerto Rico*

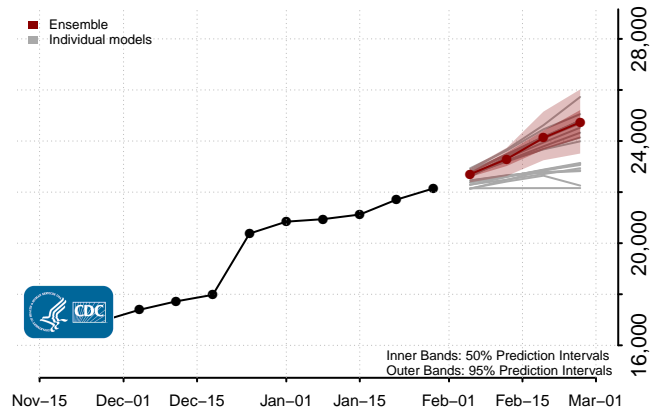
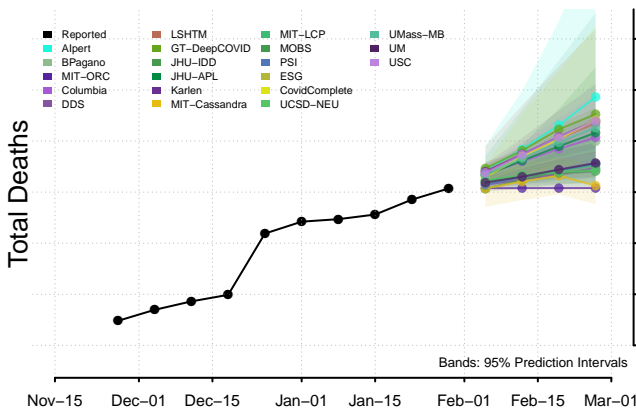
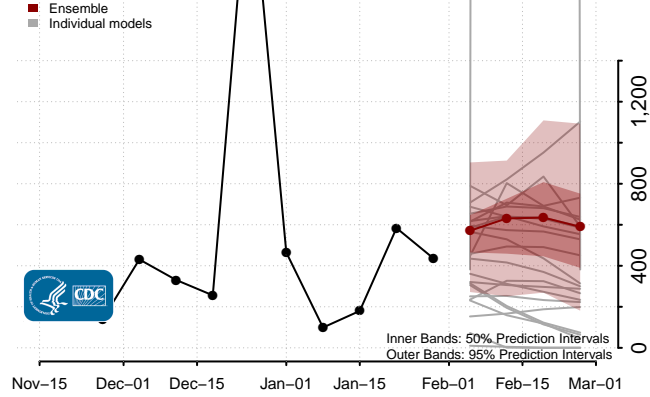
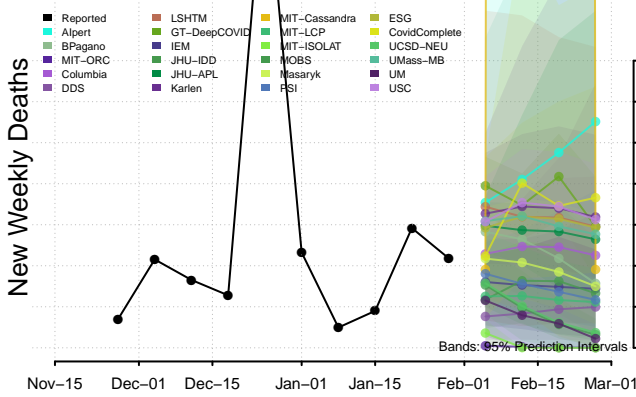


*New weekly deaths may decrease in this location over the next four weeks. For these locations, the ensemble forecast indicates a probability of 0.75 or greater that fewer deaths will be reported in week four of the forecast than in the last reported week.

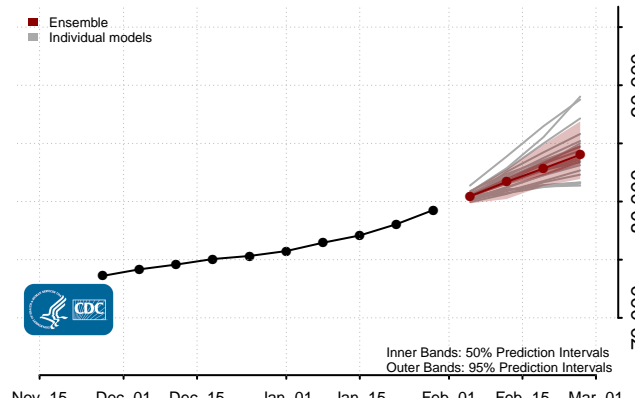
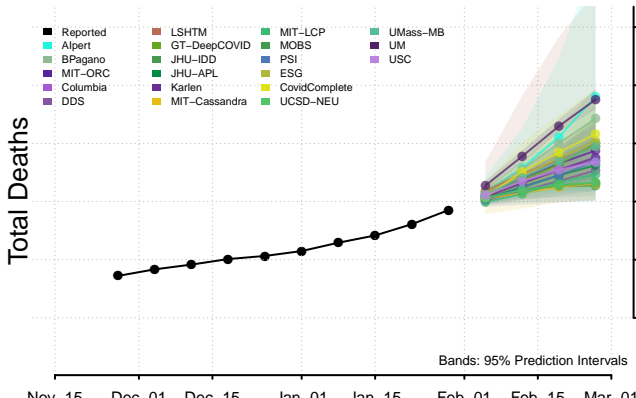
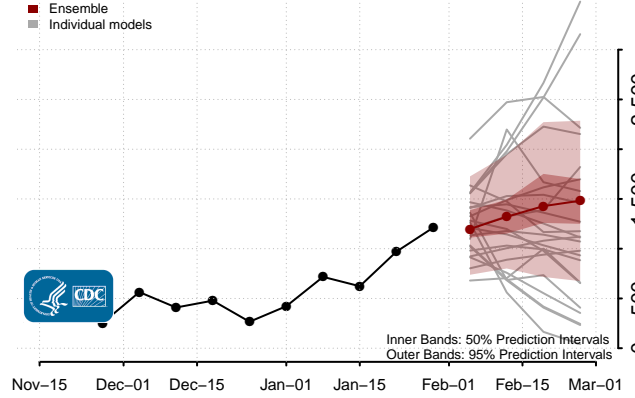
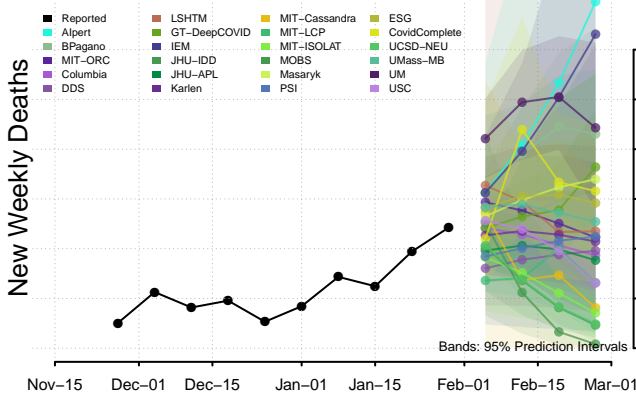
South Dakota



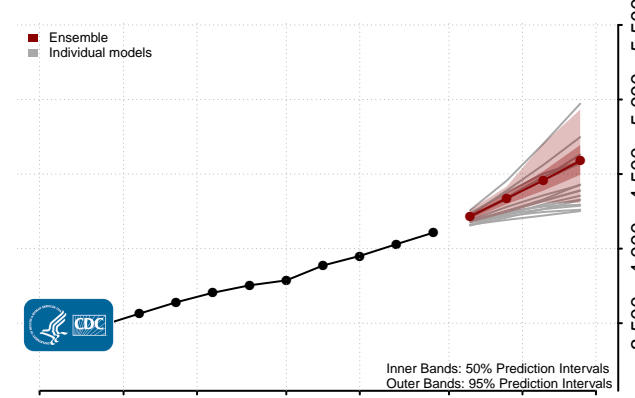
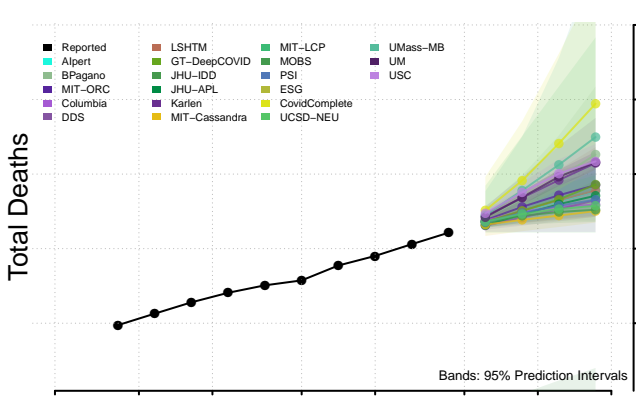
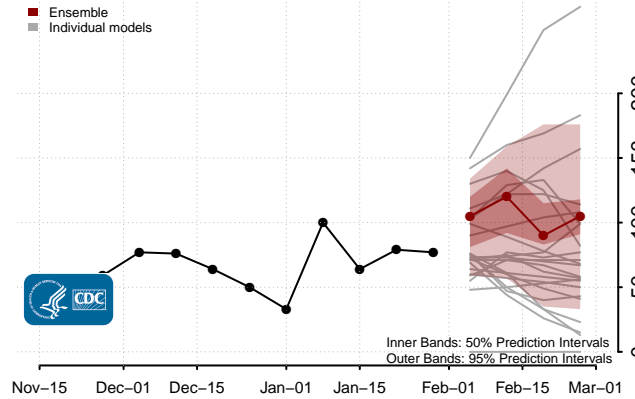
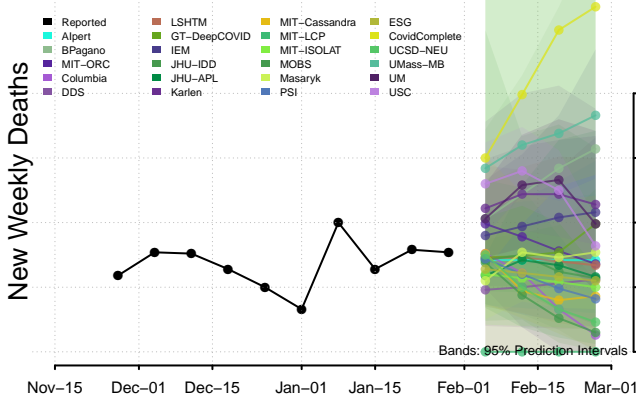
Tennessee



Texas**

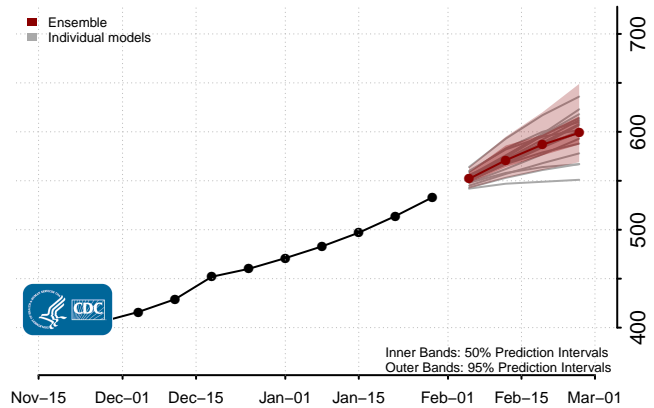
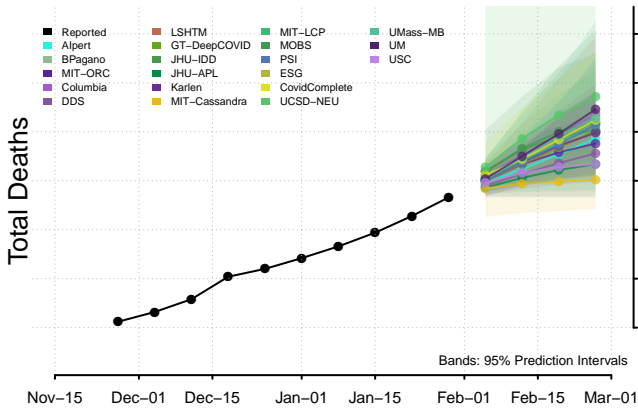
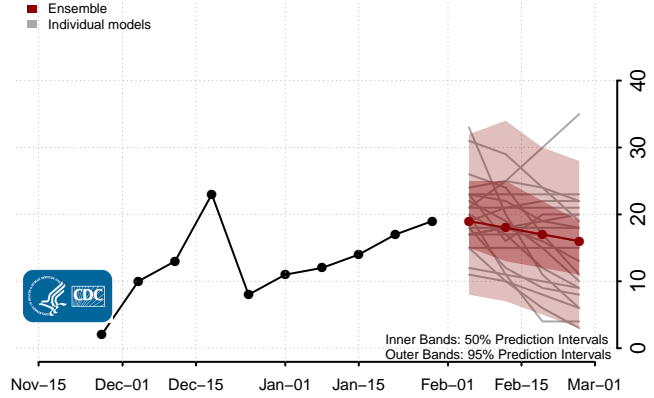
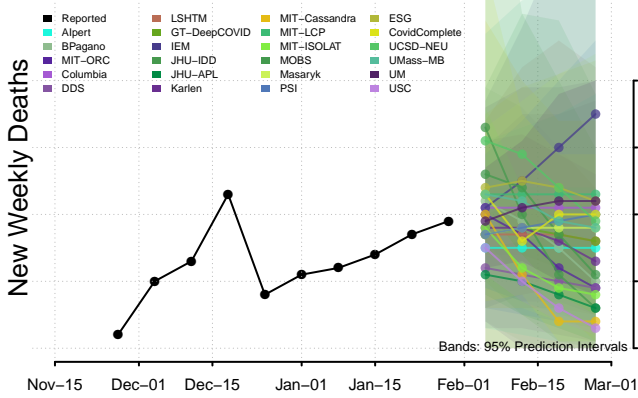


Utah**

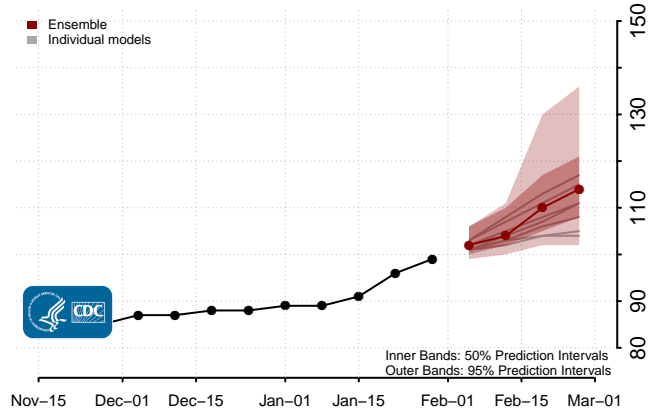
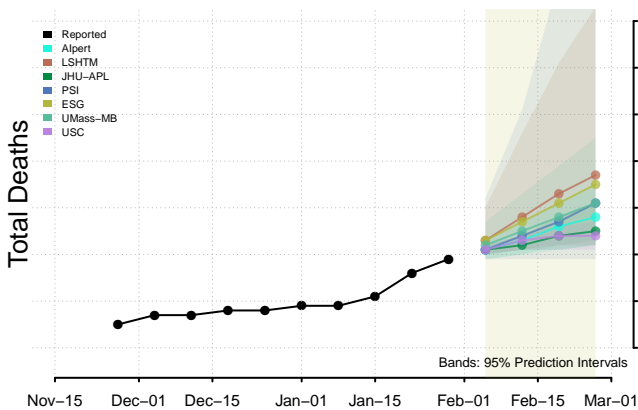
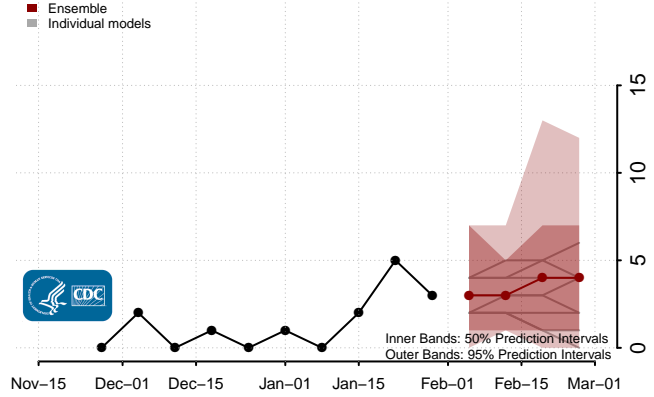
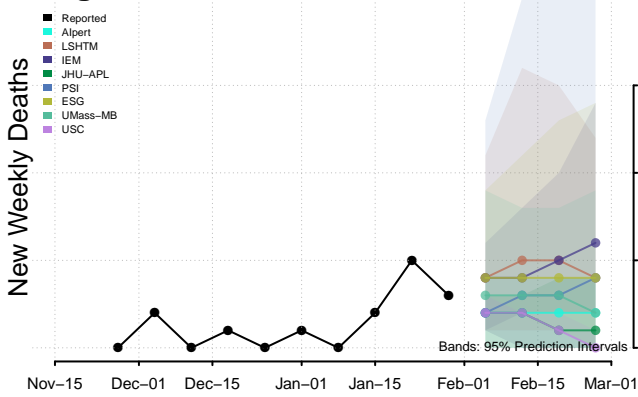


**New weekly deaths may increase in this location over the next four weeks. For these locations, the ensemble forecast indicates a probability of 0.75 or greater that more deaths will be reported in week four of the forecast than in the last reported week.

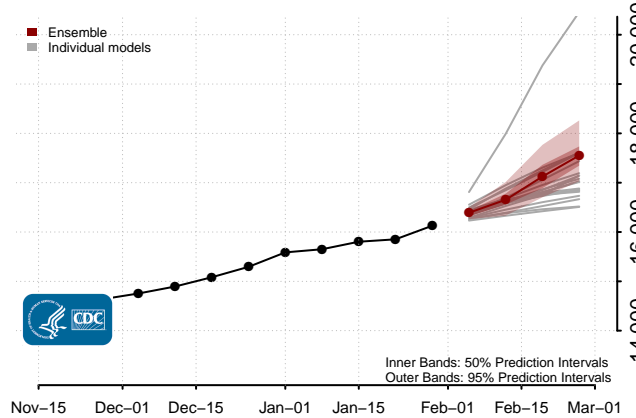
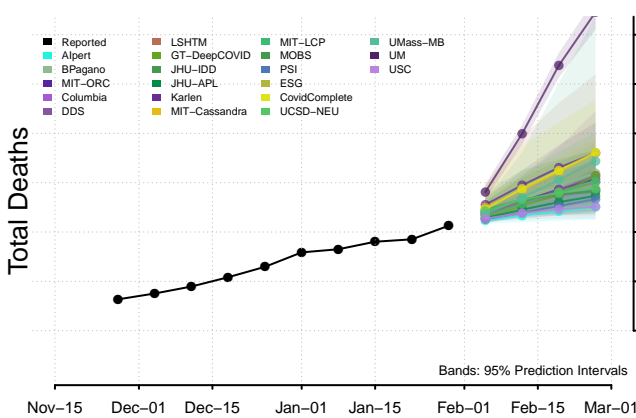
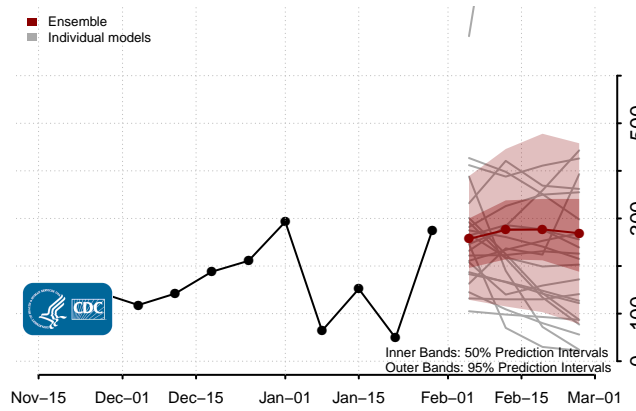
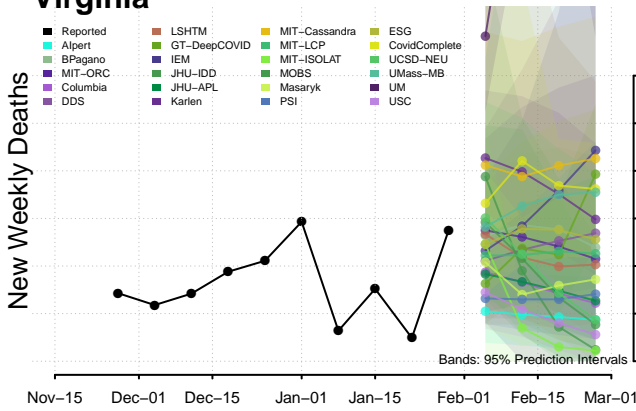
Vermont



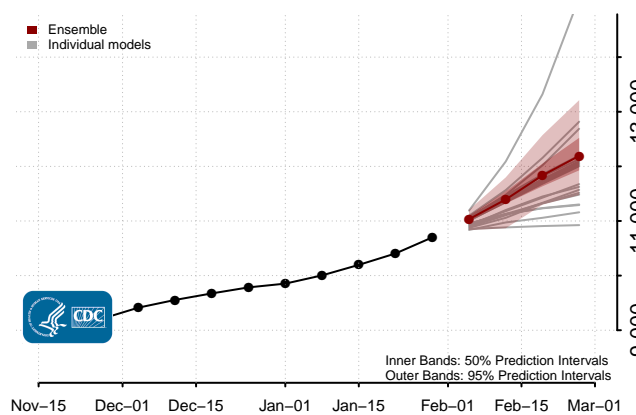
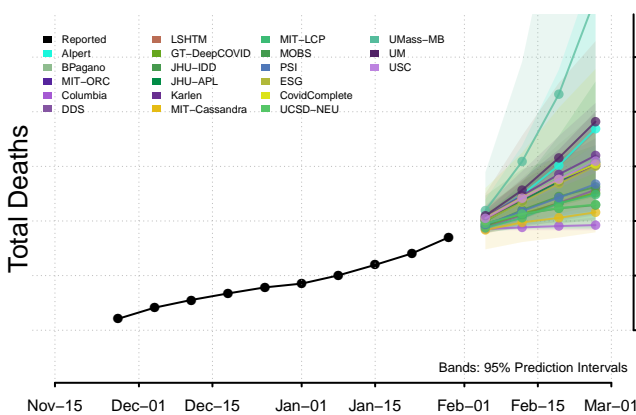
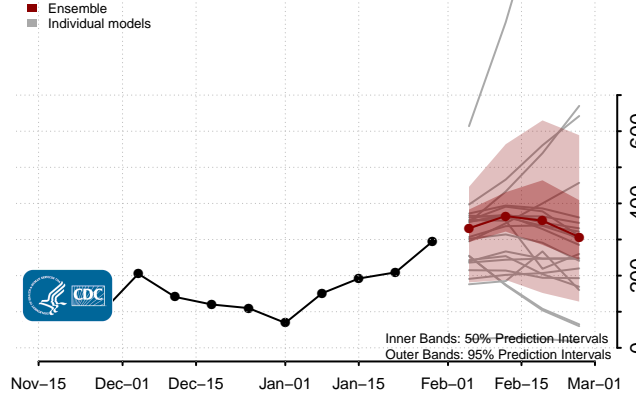
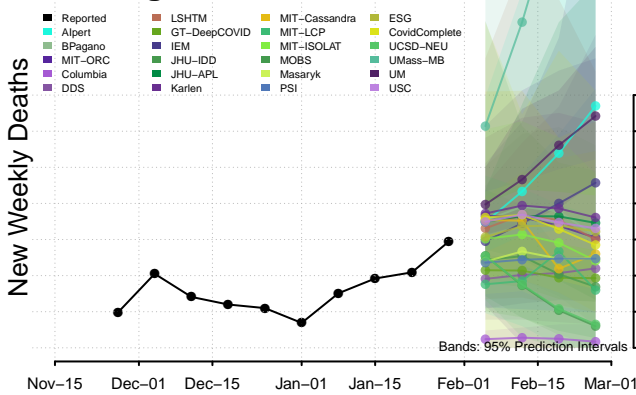
Virgin Islands



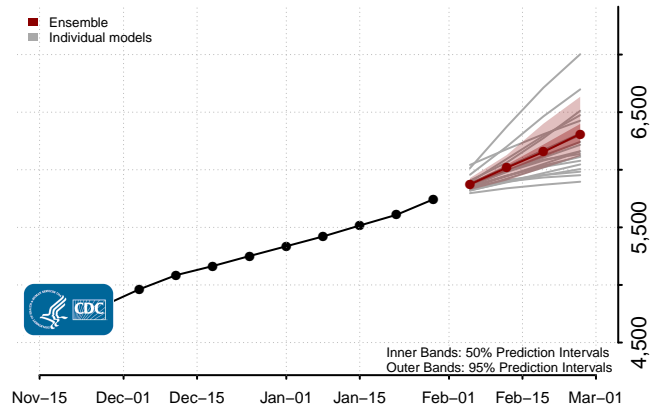
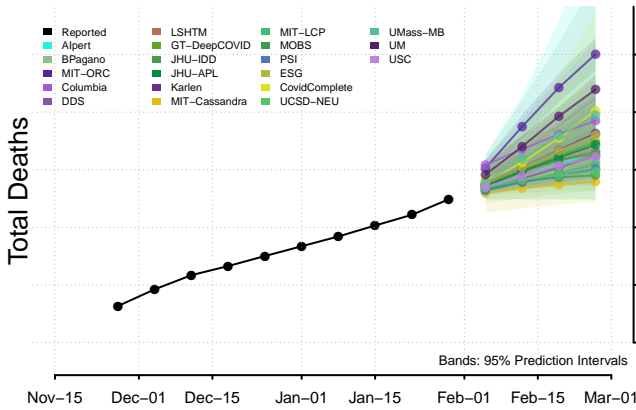
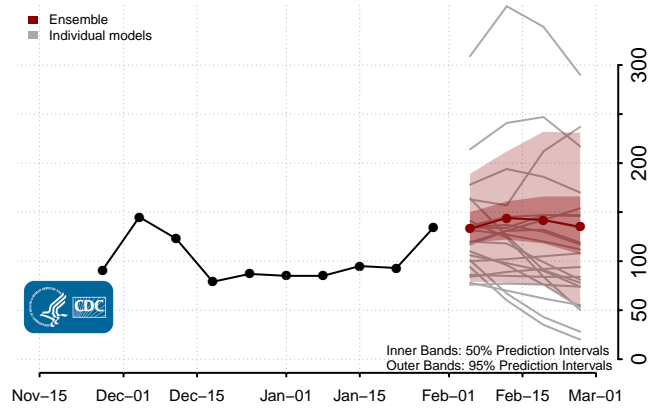
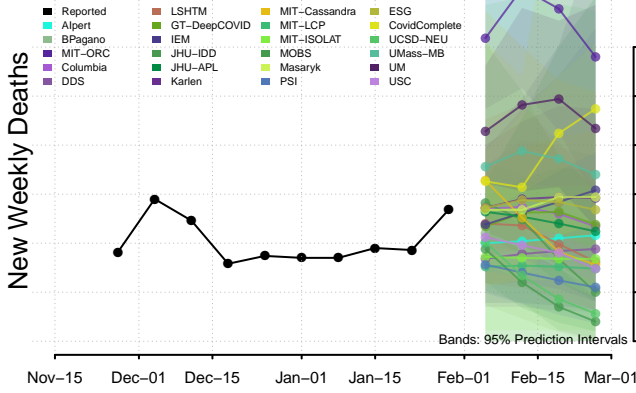
Virginia



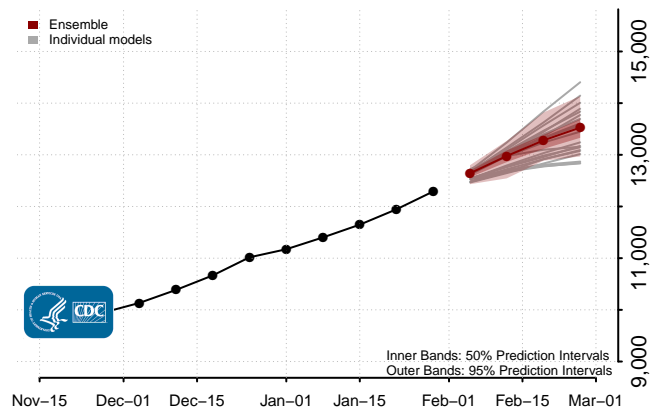
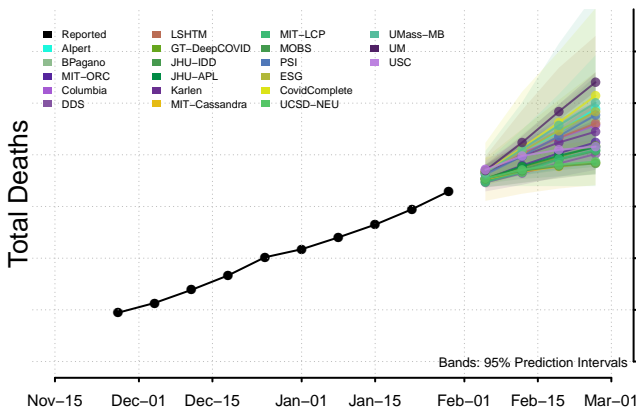
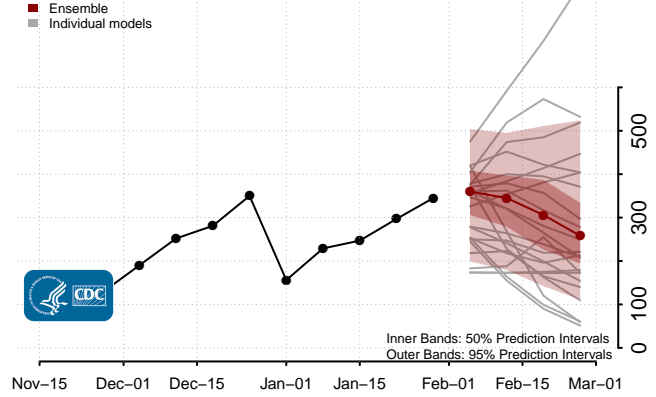
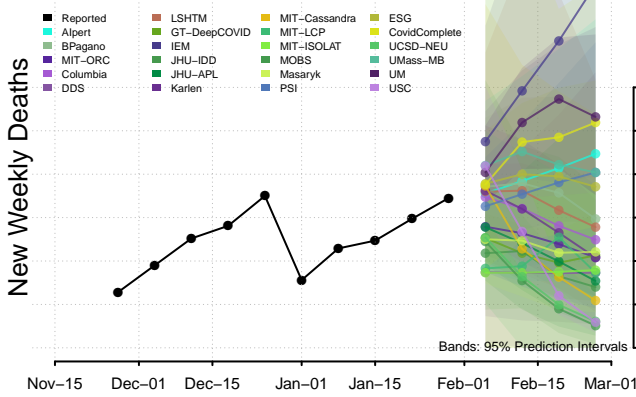
Washington



West Virginia



Wisconsin*



*New weekly deaths may decrease in this location over the next four weeks. For these locations, the ensemble forecast indicates a probability of 0.75 or greater that fewer deaths will be reported in week four of the forecast than in the last reported week.

Wyoming

