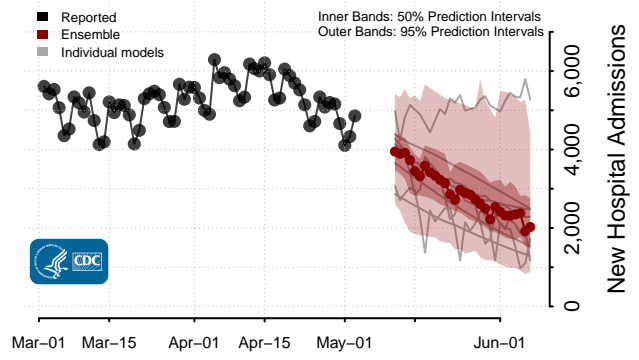
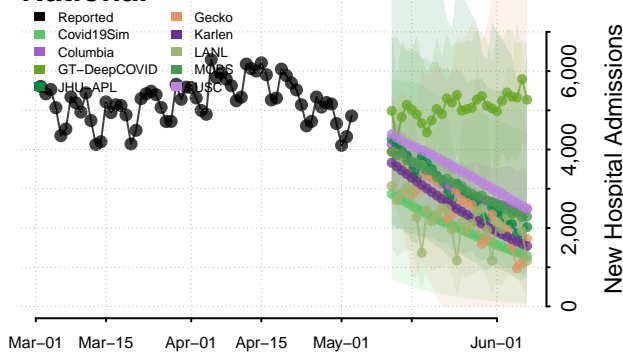
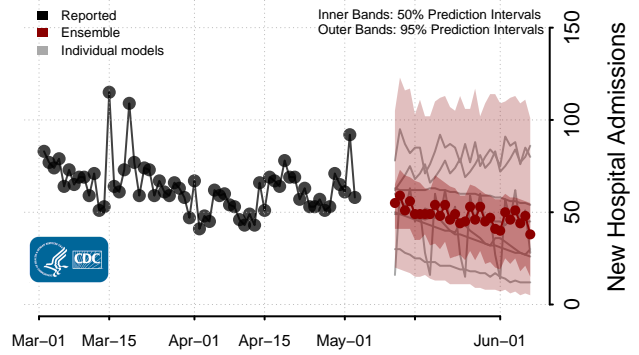
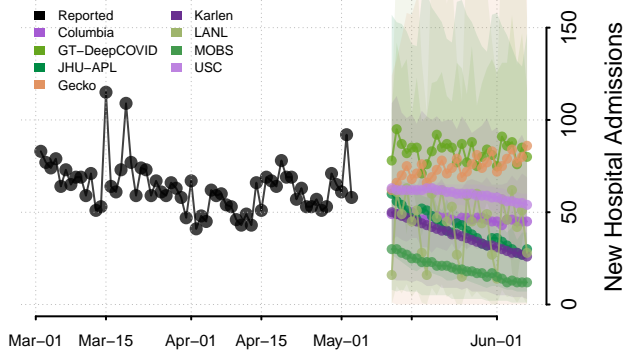


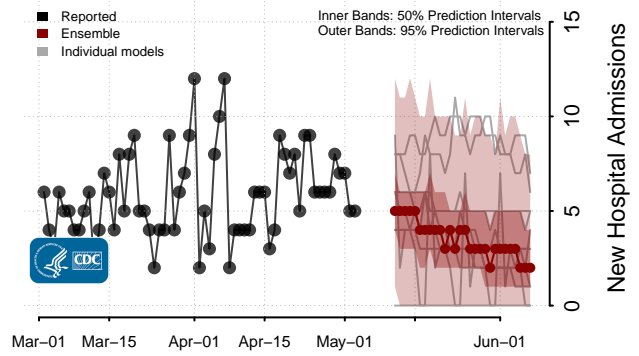
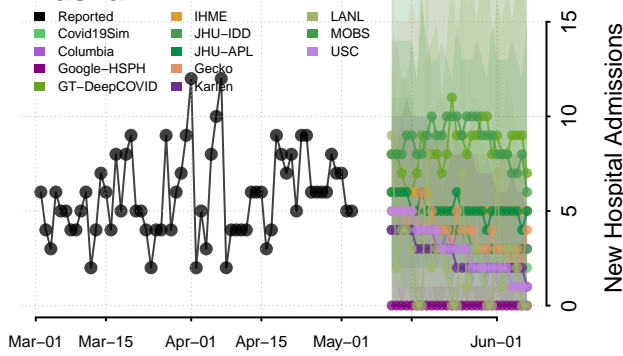
National*



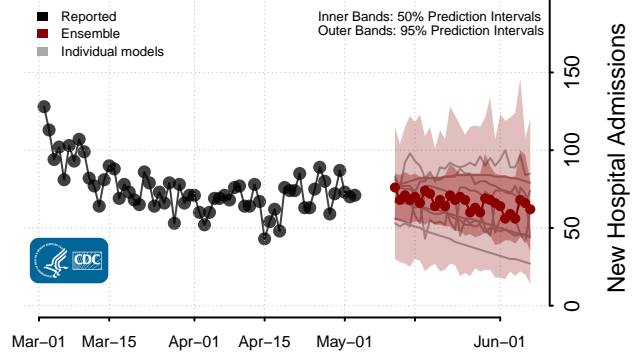
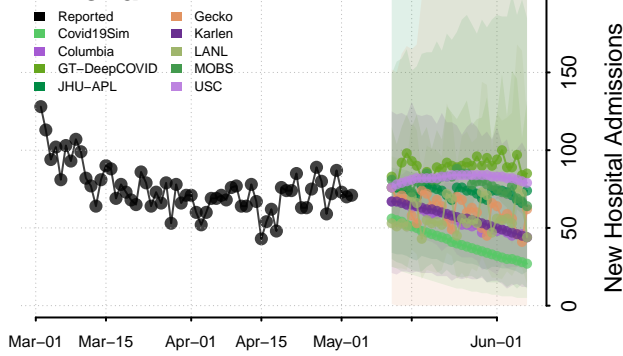
Alabama



Alaska

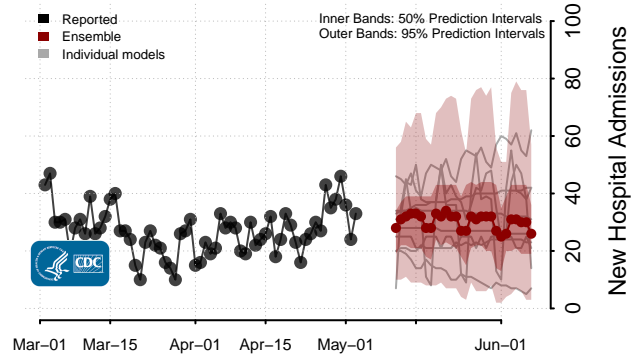
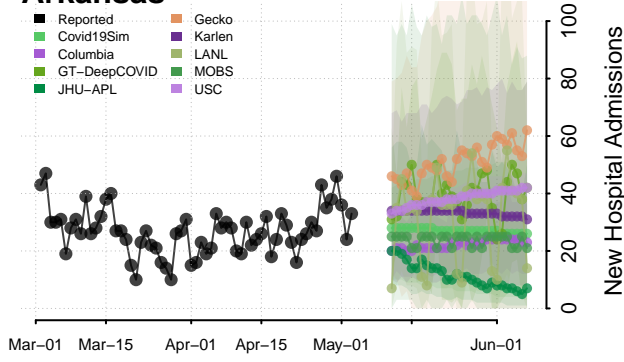


Arizona

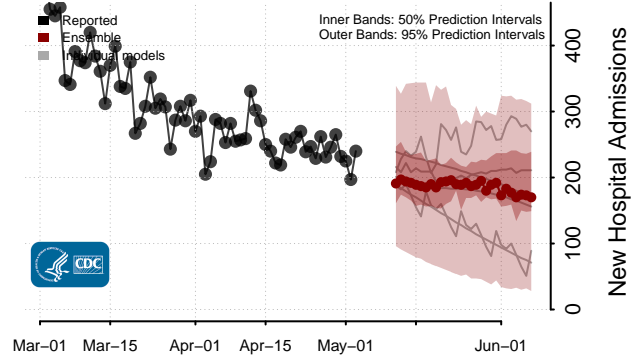
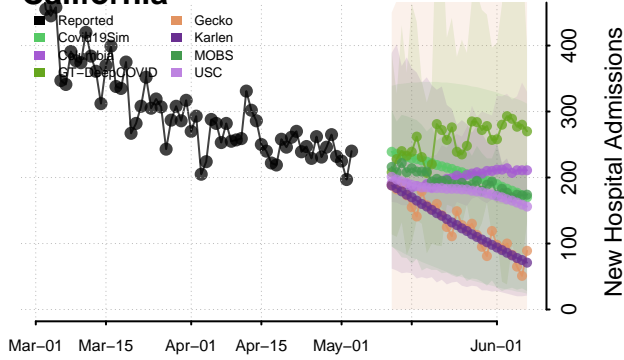


*New daily confirmed COVID-19 hospital admissions may decrease in this location over the next four weeks. For these locations, the ensemble forecast indicates a median daily probability of 0.75 or greater that fewer hospital admissions will be reported in the last seven days of the forecast than the median in the last seven days of reported data.

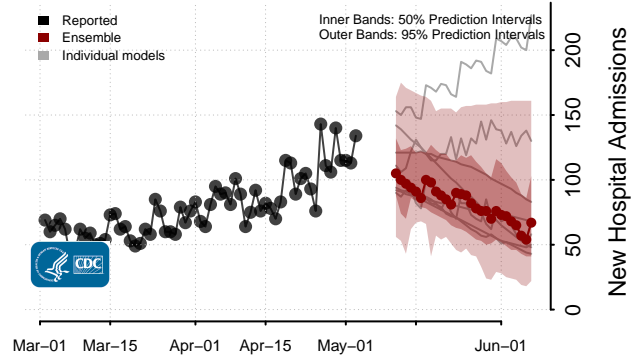
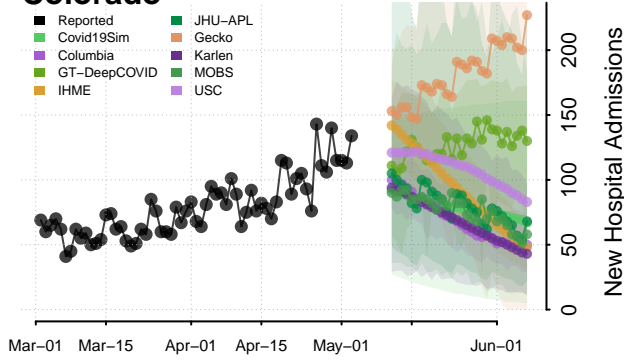
Arkansas



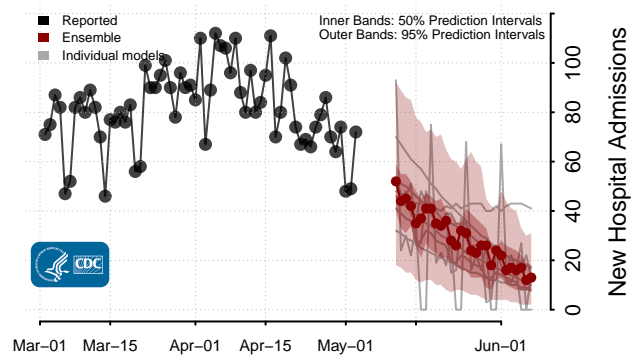
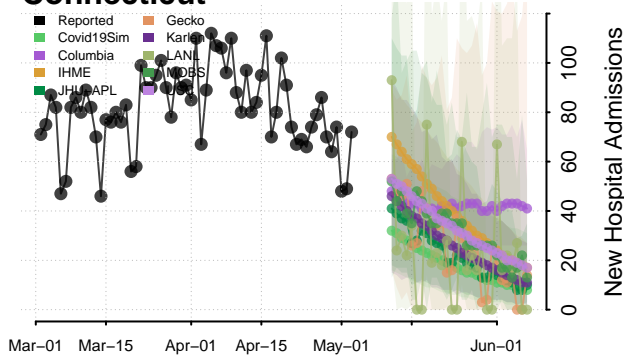
California



Colorado

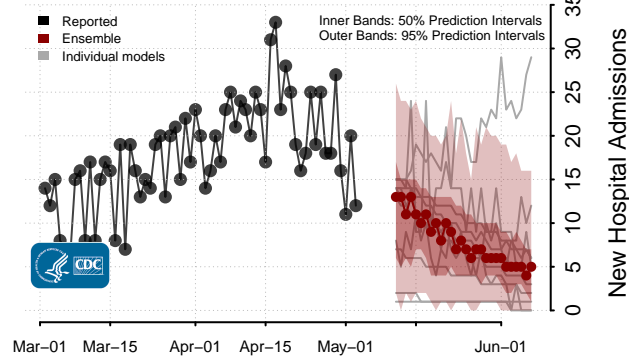
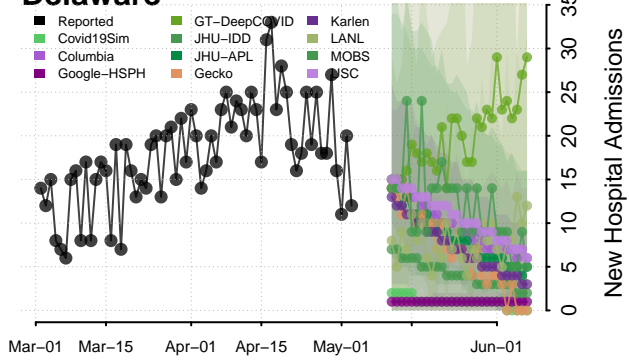


Connecticut*

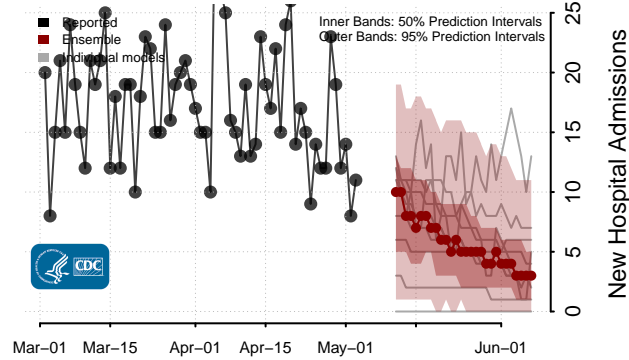
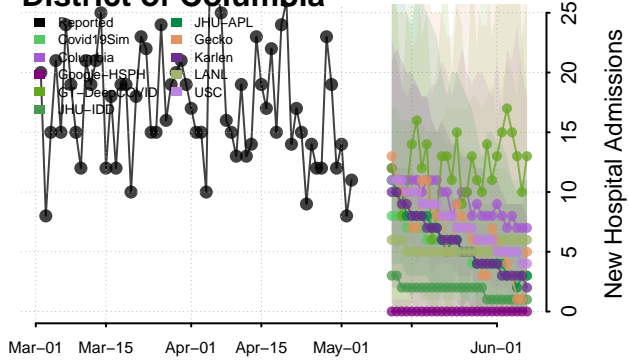


*New daily confirmed COVID-19 hospital admissions may decrease in this location over the next four weeks. For these locations, the ensemble forecast indicates a median daily probability of 0.75 or greater that fewer hospital admissions will be reported in the last seven days of the forecast than the median in the last seven days of reported data.

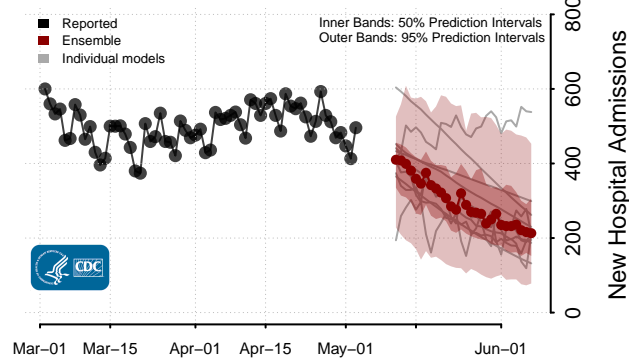
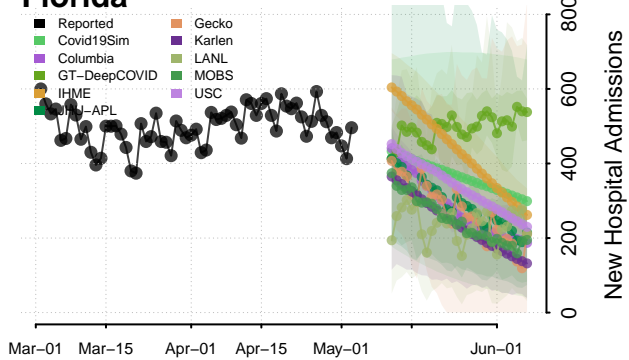
Delaware*



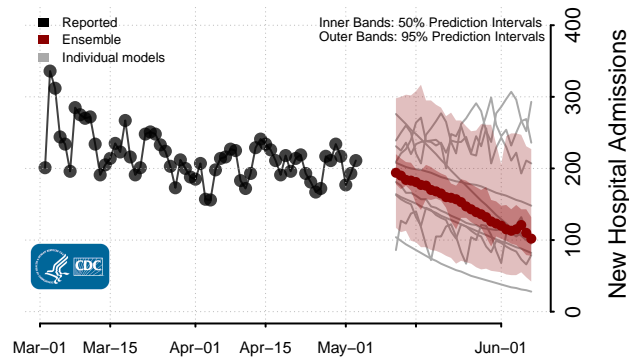
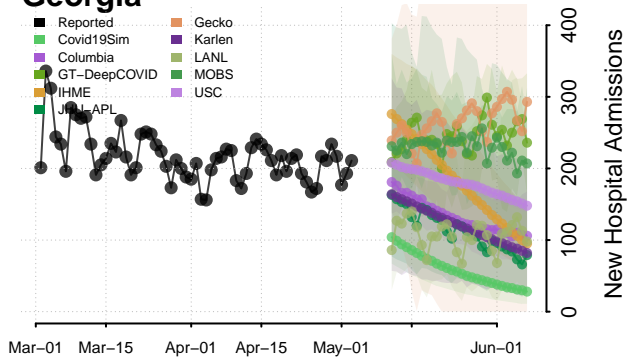
District of Columbia*



Florida*

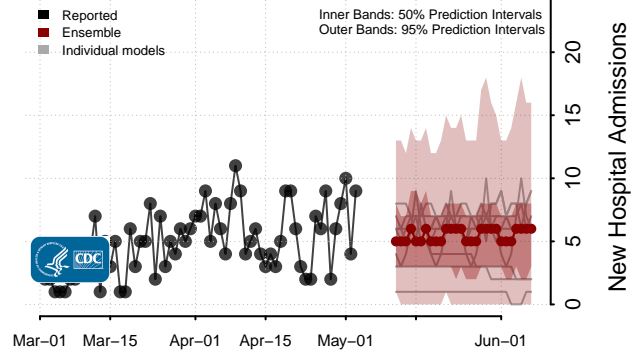
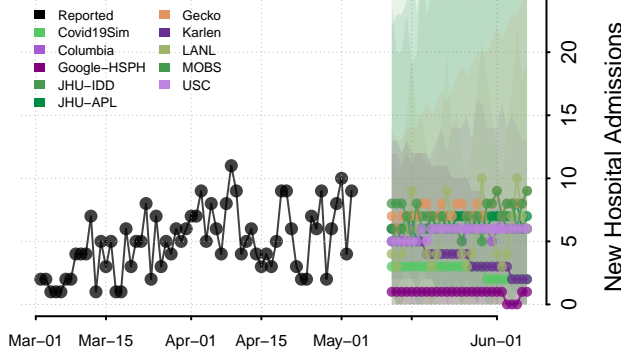


Georgia*

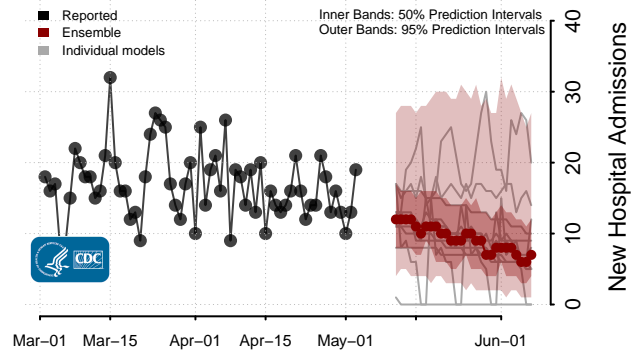
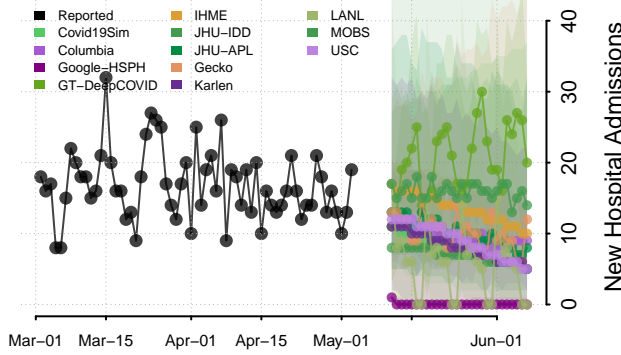


*New daily confirmed COVID-19 hospital admissions may decrease in this location over the next four weeks. For these locations, the ensemble forecast indicates a median daily probability of 0.75 or greater that fewer hospital admissions will be reported in the last seven days of the forecast than the median in the last seven days of reported data.

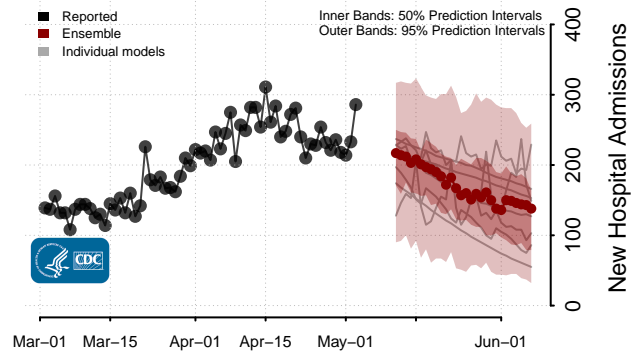
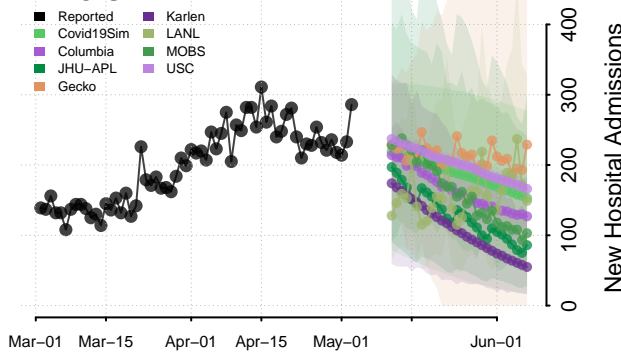
Hawaii



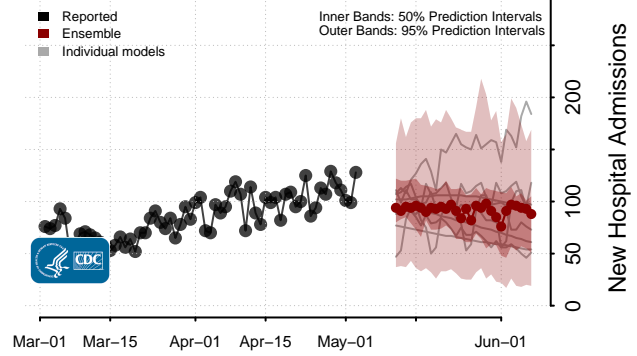
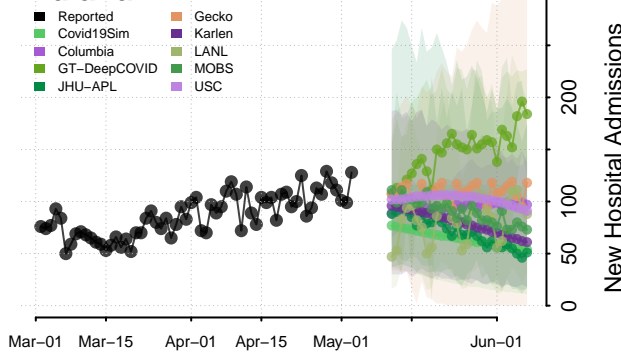
Idaho*



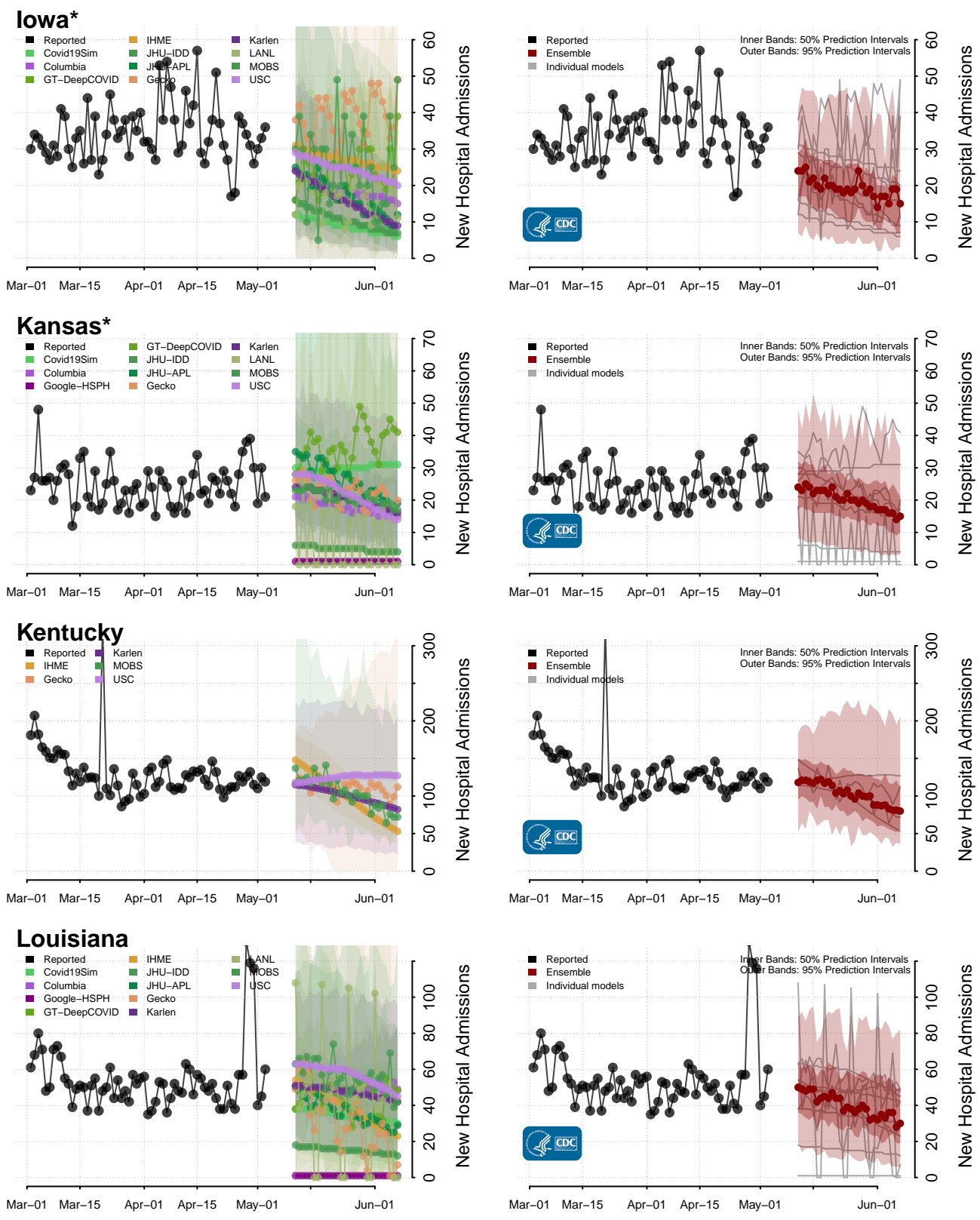
Illinois*



Indiana*

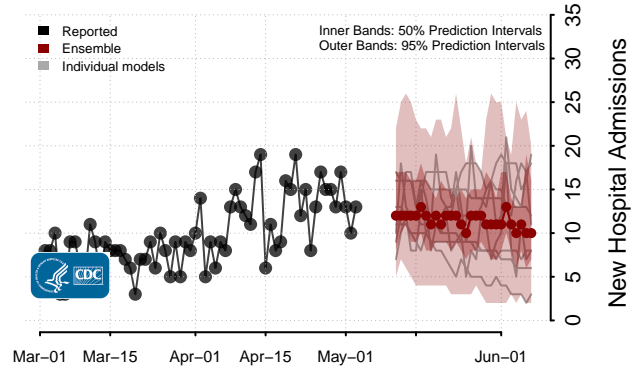
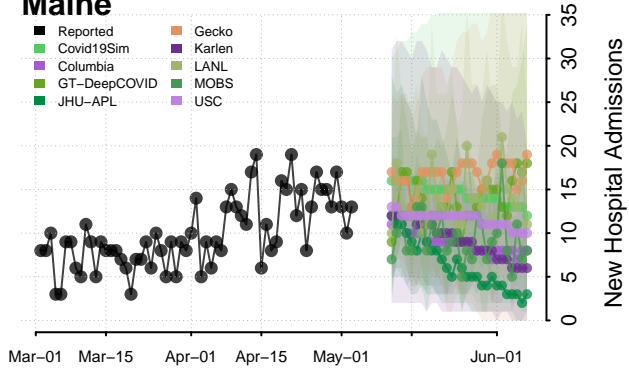


*New daily confirmed COVID-19 hospital admissions may decrease in this location over the next four weeks. For these locations, the ensemble forecast indicates a median daily probability of 0.75 or greater that fewer hospital admissions will be reported in the last seven days of the forecast than the median in the last seven days of reported data.

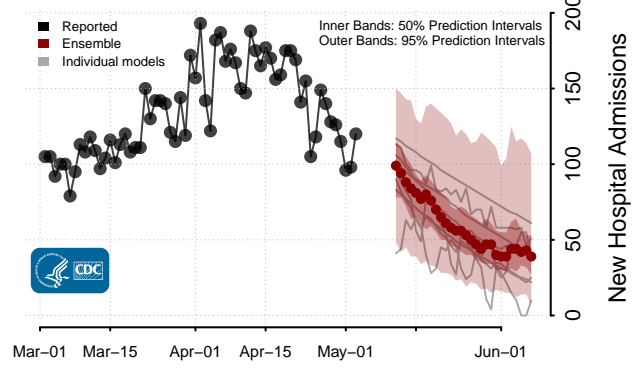
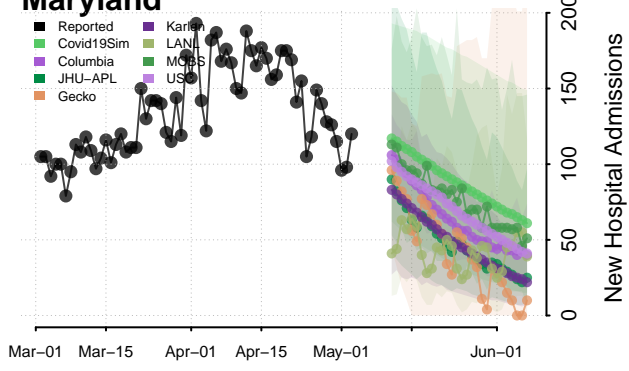


*New daily confirmed COVID-19 hospital admissions may decrease in this location over the next four weeks. For these locations, the ensemble forecast indicates a median daily probability of 0.75 or greater that fewer hospital admissions will be reported in the last seven days of the forecast than the median in the last seven days of reported data.

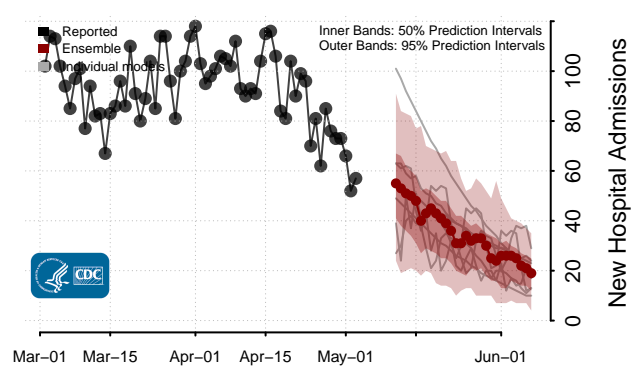
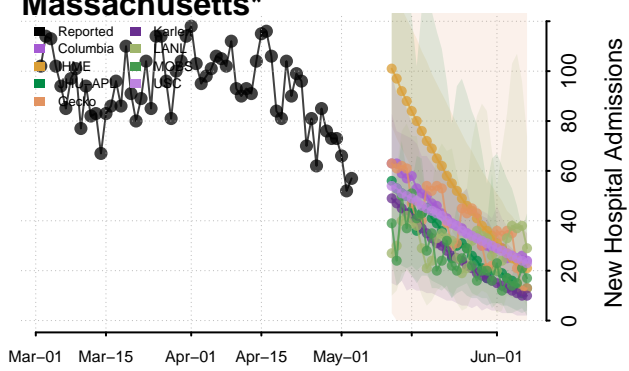
Maine



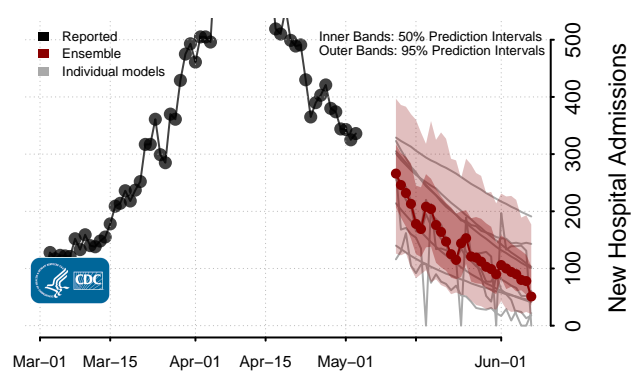
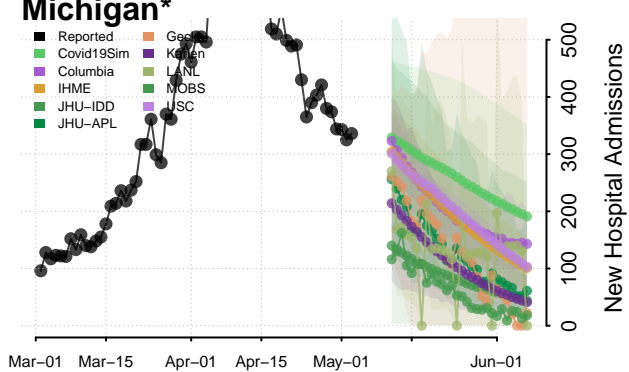
Maryland*



Massachusetts*

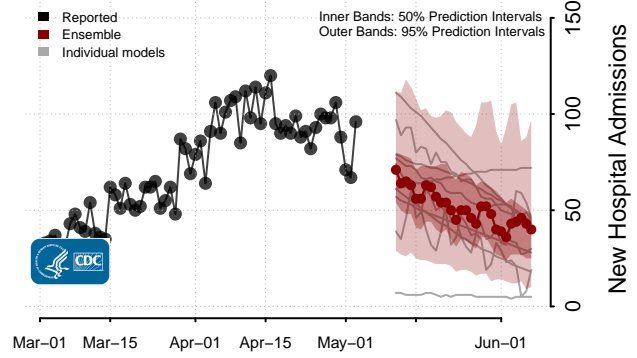
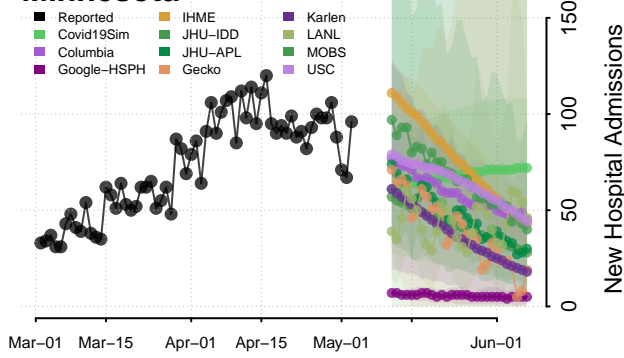


Michigan*

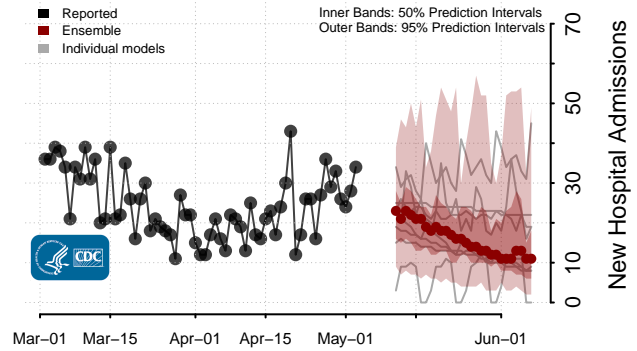
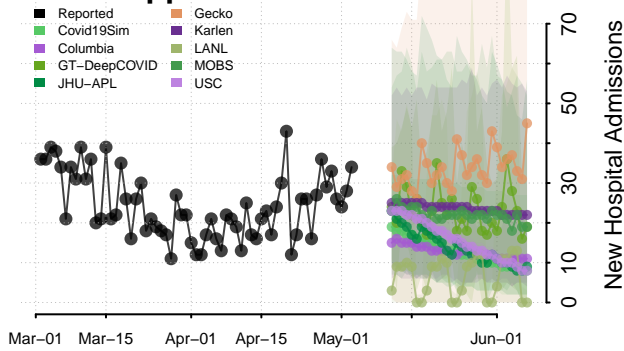


*New daily confirmed COVID-19 hospital admissions may decrease in this location over the next four weeks. For these locations, the ensemble forecast indicates a median daily probability of 0.75 or greater that fewer hospital admissions will be reported in the last seven days of the forecast than the median in the last seven days of reported data.

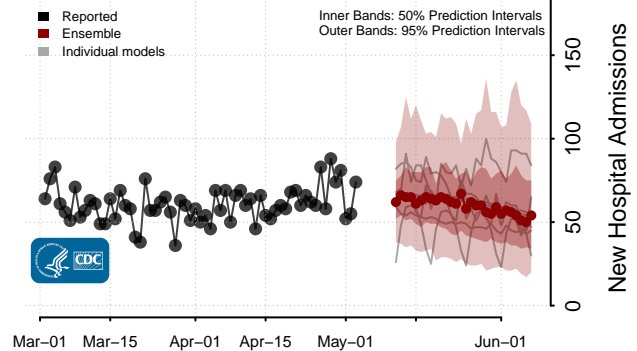
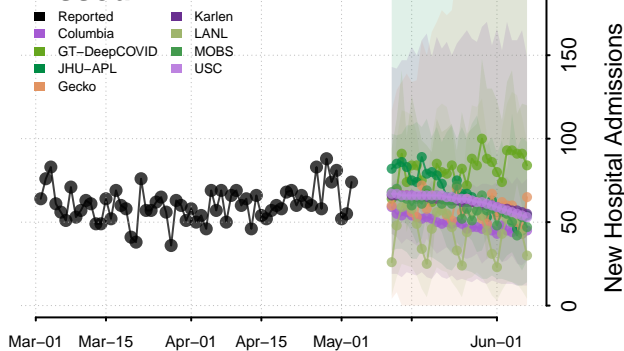
Minnesota*



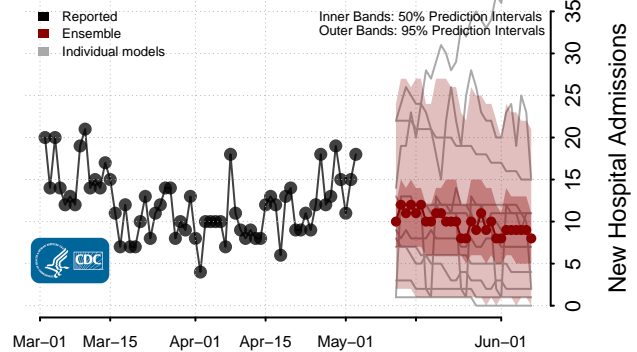
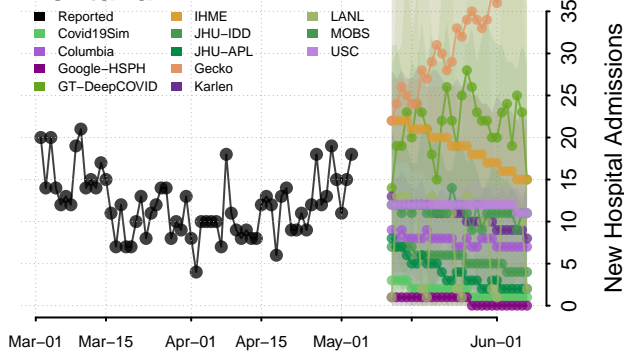
Mississippi



Missouri

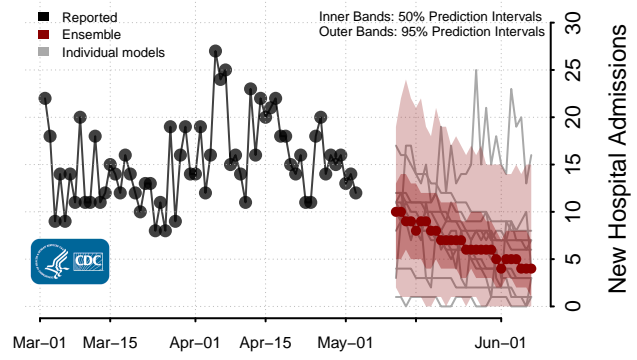
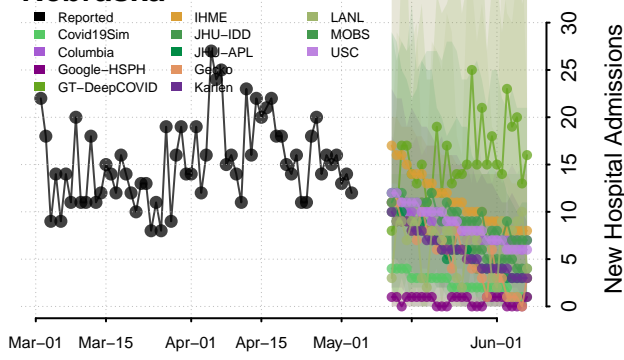


Montana

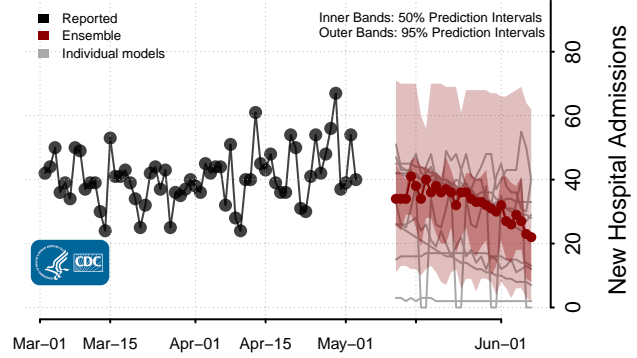
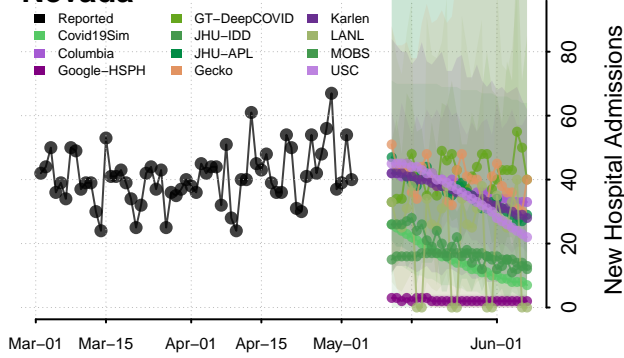


*New daily confirmed COVID-19 hospital admissions may decrease in this location over the next four weeks. For these locations, the ensemble forecast indicates a median daily probability of 0.75 or greater that fewer hospital admissions will be reported in the last seven days of the forecast than the median in the last seven days of reported data.

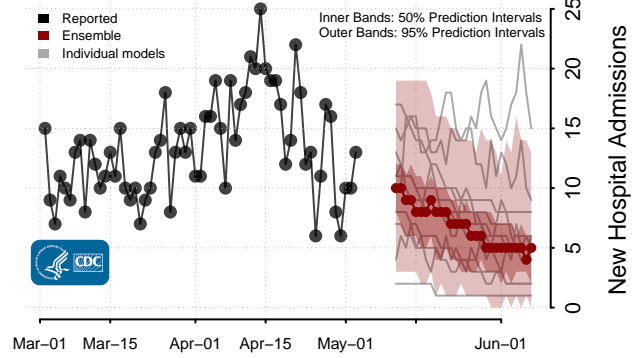
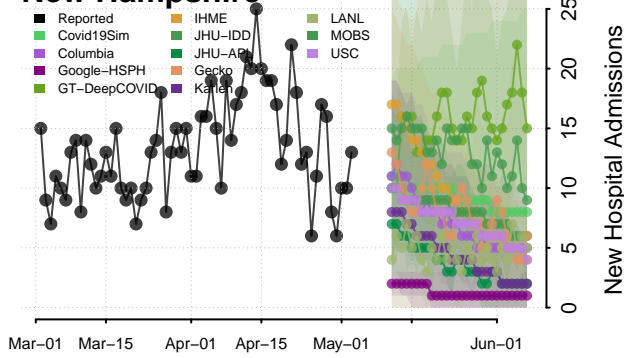
Nebraska*



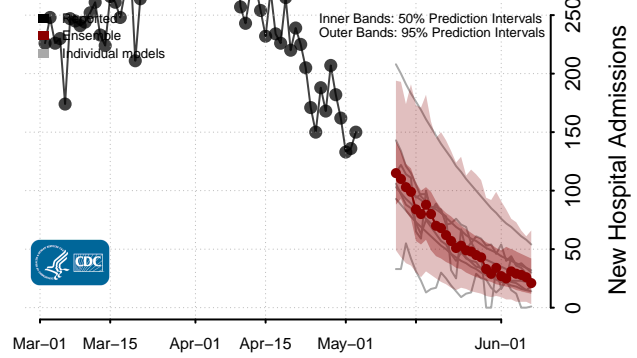
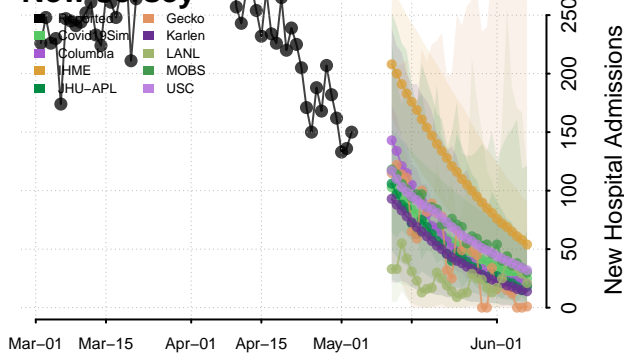
Nevada*



New Hampshire

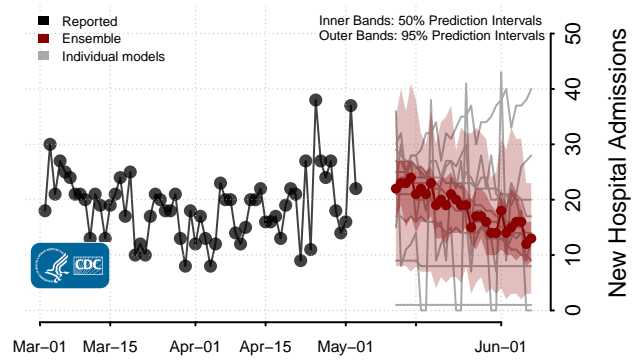
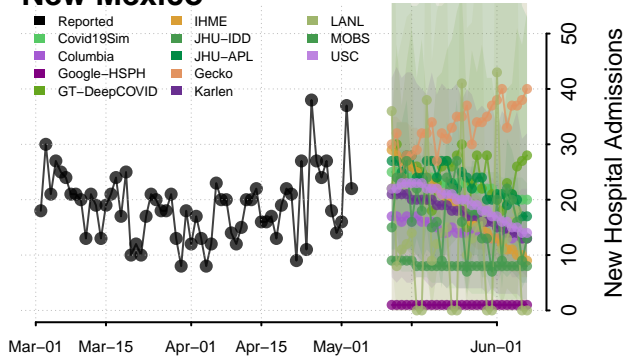


New Jersey*

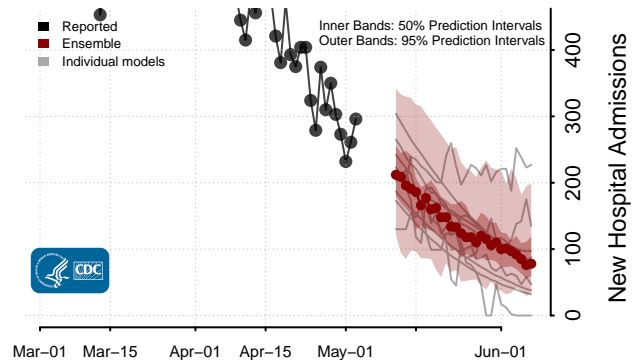
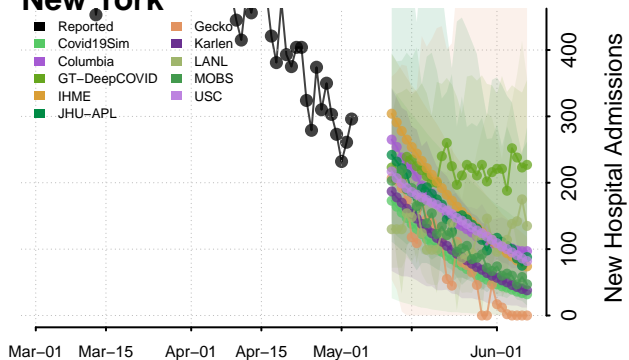


*New daily confirmed COVID-19 hospital admissions may decrease in this location over the next four weeks. For these locations, the ensemble forecast indicates a median daily probability of 0.75 or greater that fewer hospital admissions will be reported in the last seven days of the forecast than the median in the last seven days of reported data.

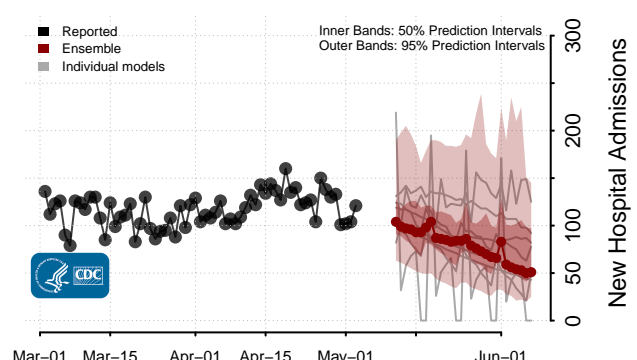
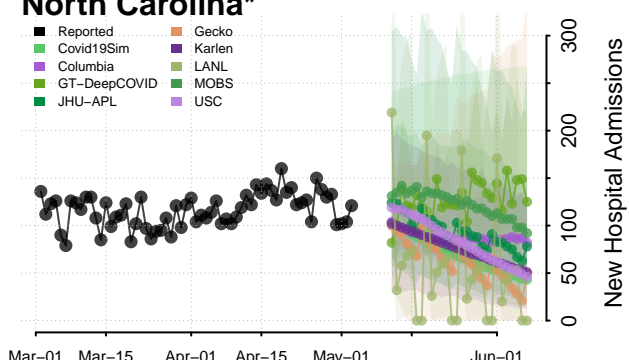
New Mexico



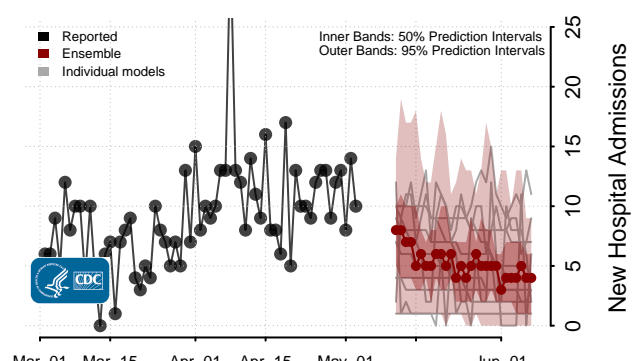
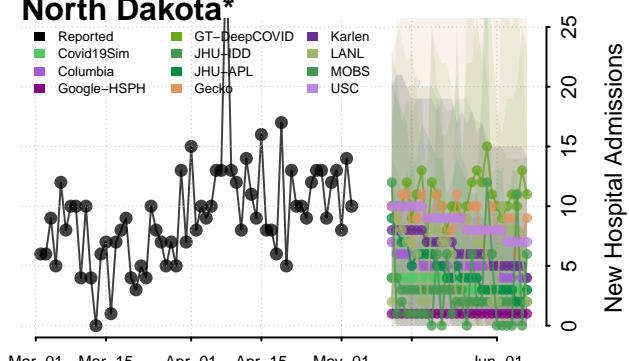
New York*



North Carolina*

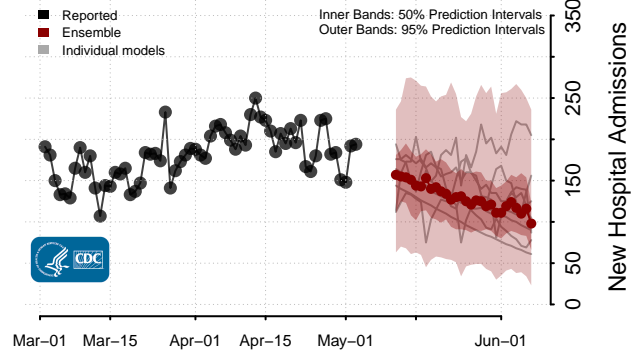
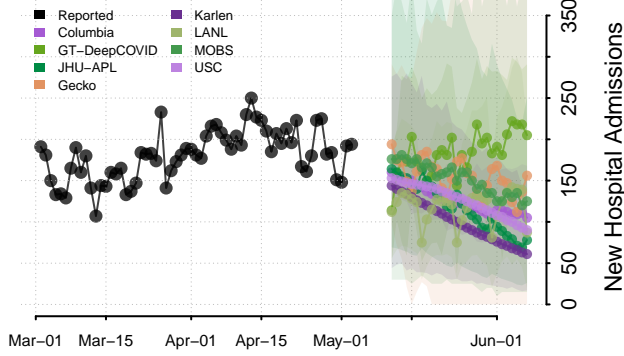


North Dakota*

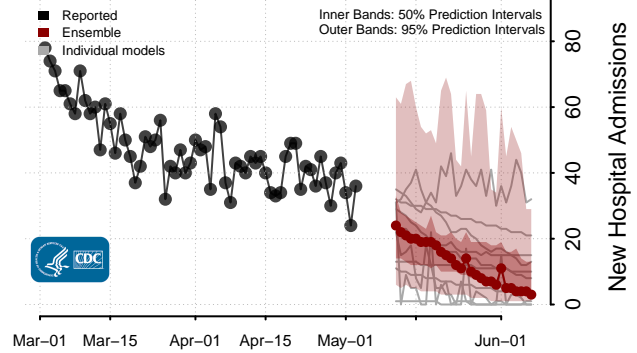
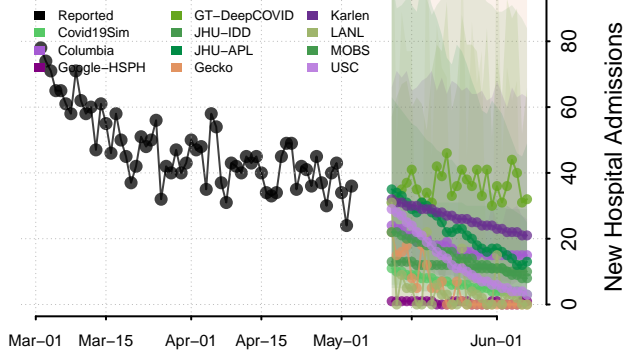


*New daily confirmed COVID-19 hospital admissions may decrease in this location over the next four weeks. For these locations, the ensemble forecast indicates a median daily probability of 0.75 or greater that fewer hospital admissions will be reported in the last seven days of the forecast than the median in the last seven days of reported data.

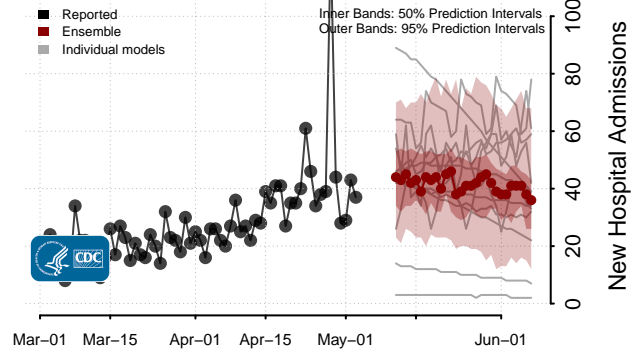
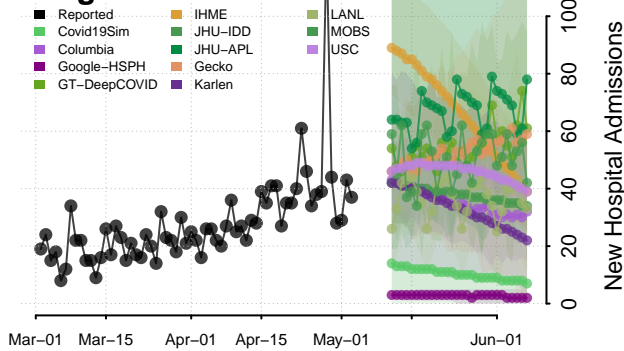
Ohio*



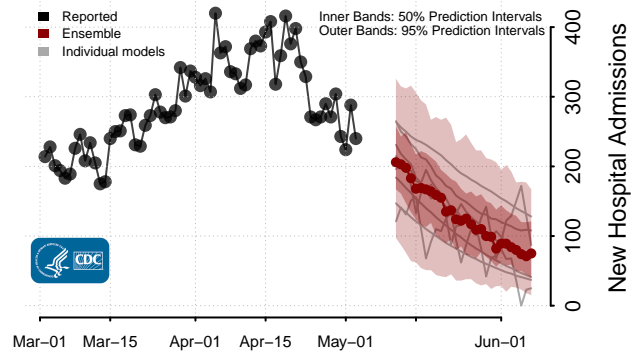
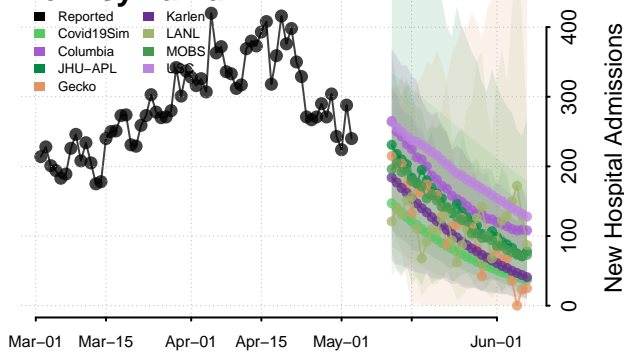
Oklahoma*



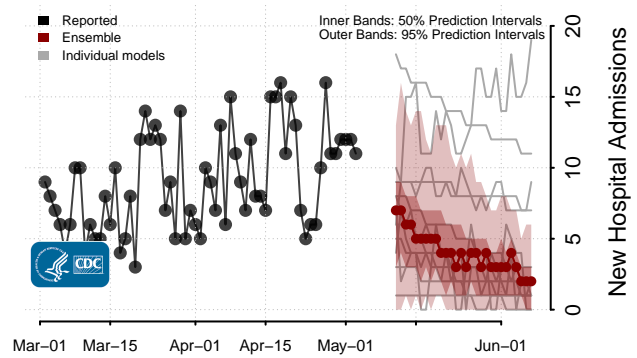
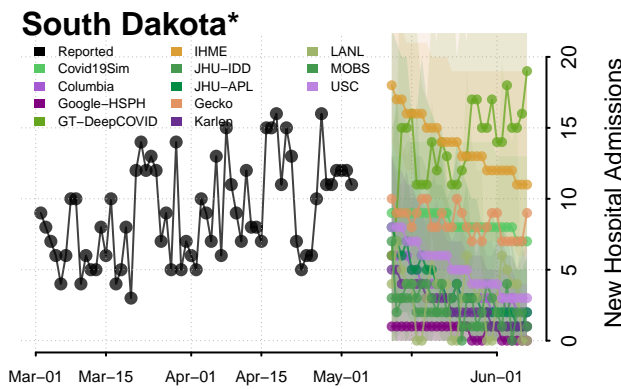
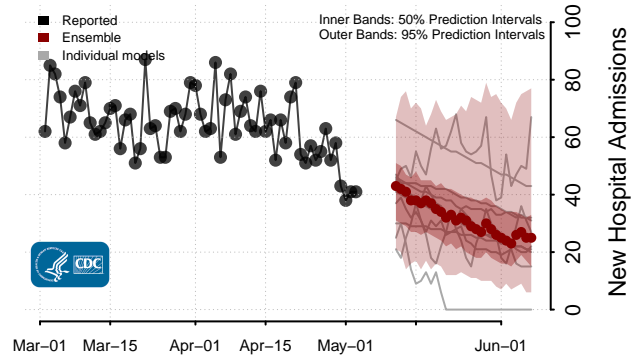
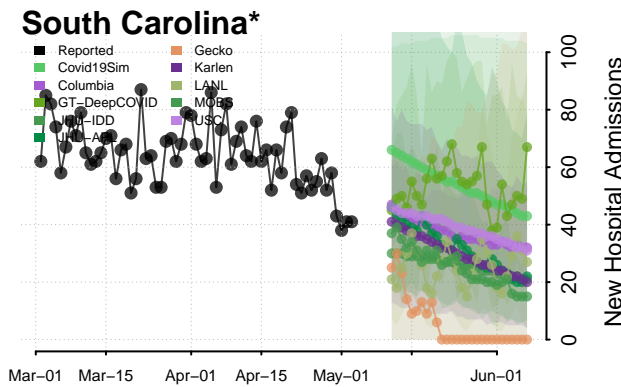
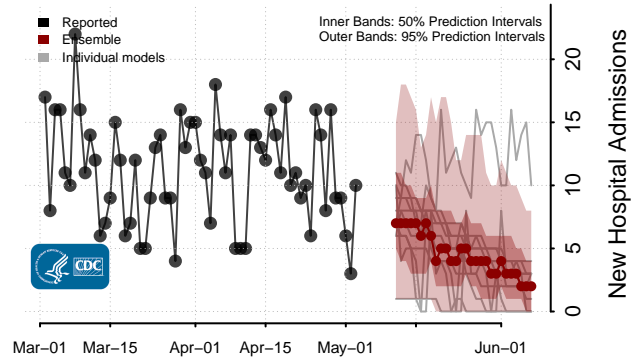
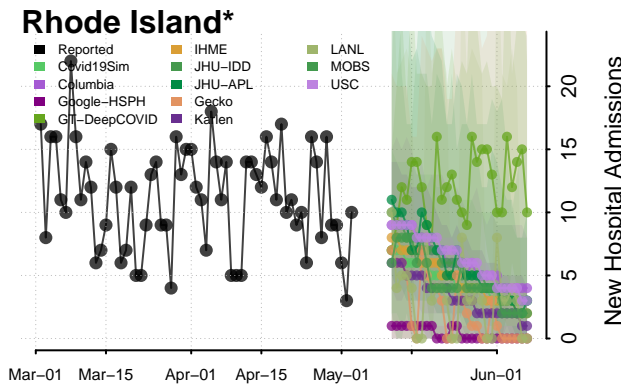
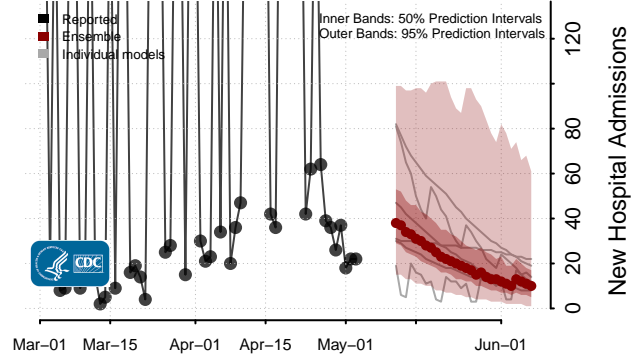
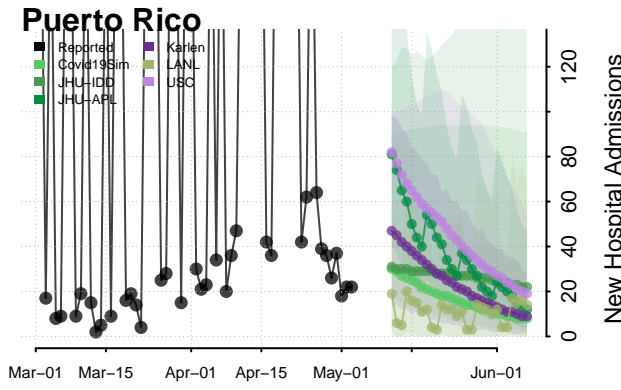
Oregon



Pennsylvania*

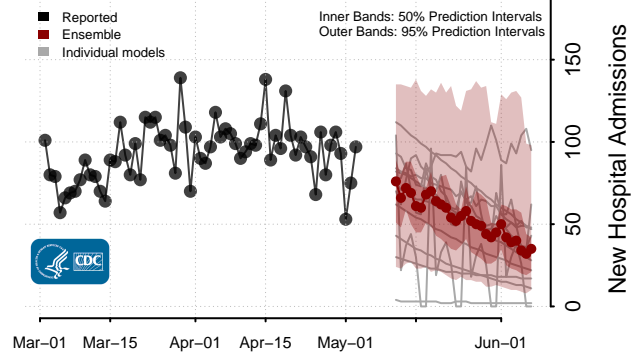
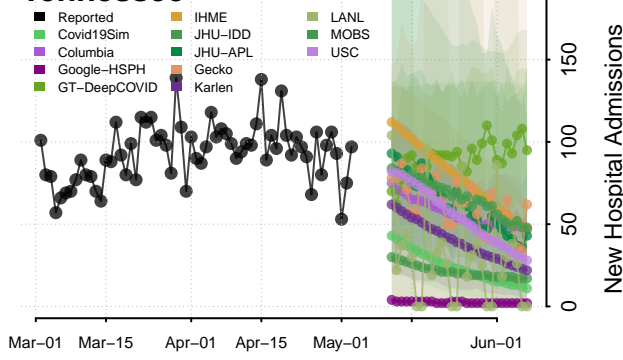


*New daily confirmed COVID-19 hospital admissions may decrease in this location over the next four weeks. For these locations, the ensemble forecast indicates a median daily probability of 0.75 or greater that fewer hospital admissions will be reported in the last seven days of the forecast than the median in the last seven days of reported data.

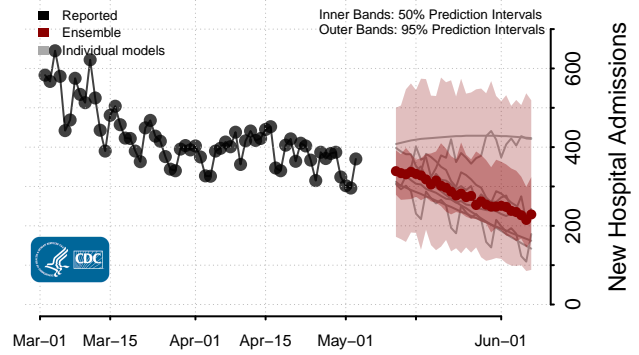
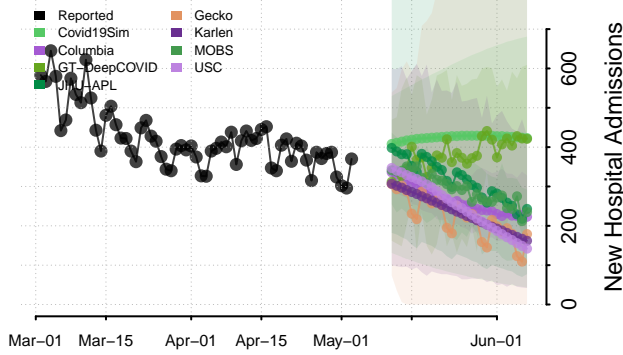


*New daily confirmed COVID-19 hospital admissions may decrease in this location over the next four weeks. For these locations, the ensemble forecast indicates a median daily probability of 0.75 or greater that fewer hospital admissions will be reported in the last seven days of the forecast than the median in the last seven days of reported data.

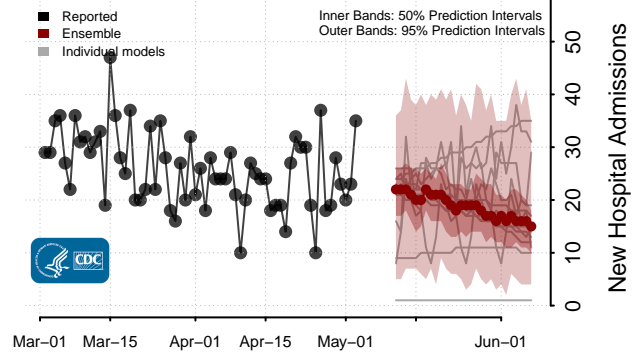
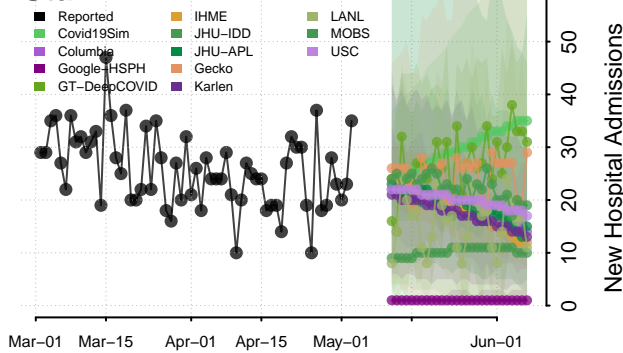
Tennessee*



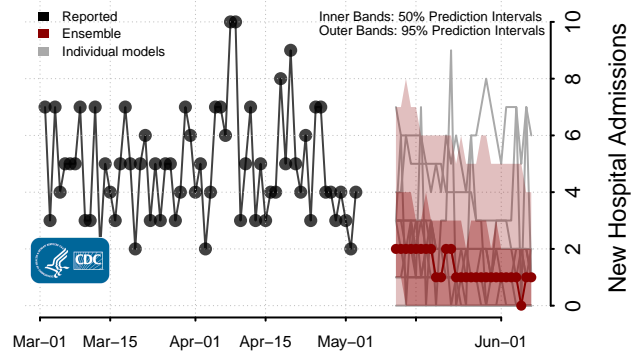
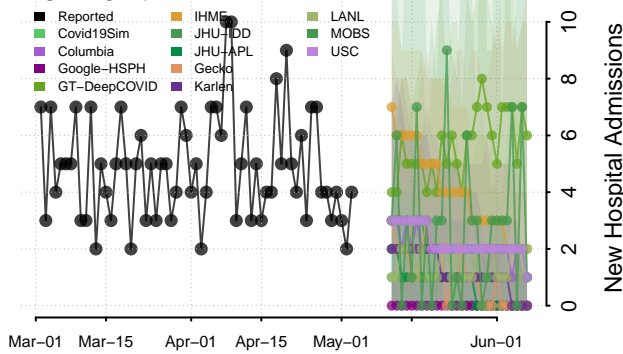
Texas*



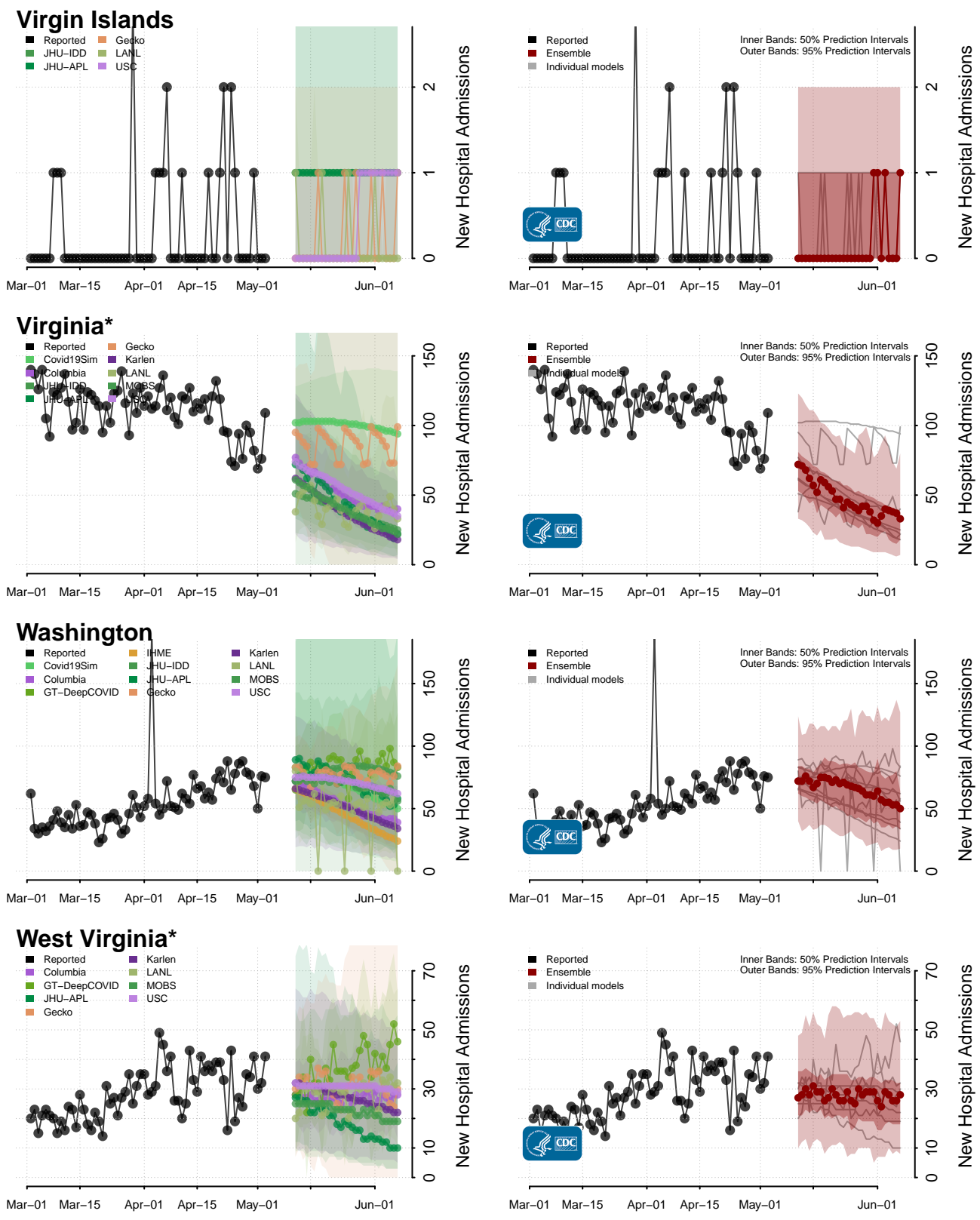
Utah*



Vermont

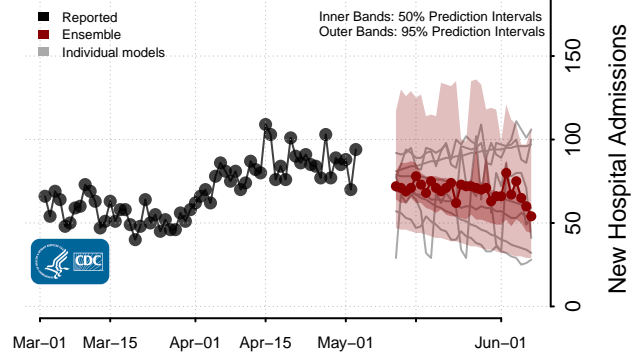
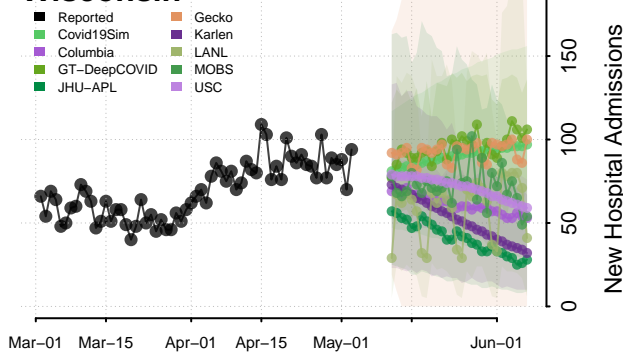


*New daily confirmed COVID-19 hospital admissions may decrease in this location over the next four weeks. For these locations, the ensemble forecast indicates a median daily probability of 0.75 or greater that fewer hospital admissions will be reported in the last seven days of the forecast than the median in the last seven days of reported data.

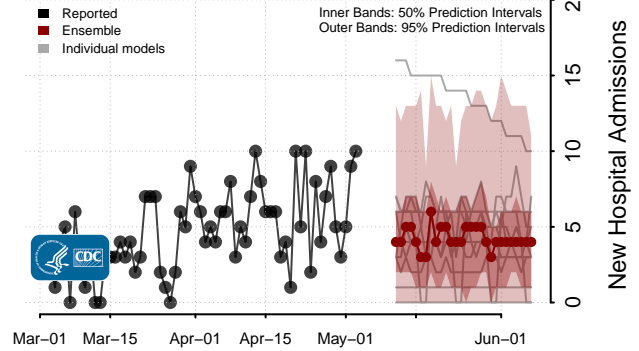
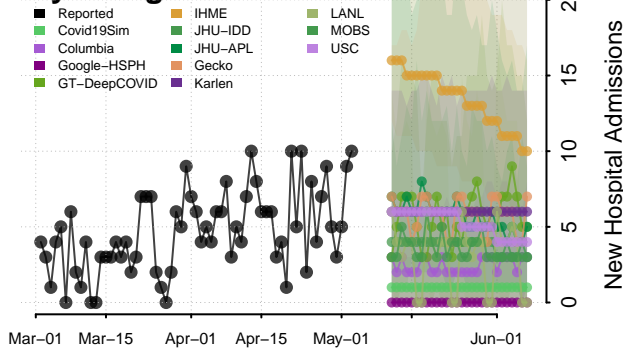


*New daily confirmed COVID-19 hospital admissions may decrease in this location over the next four weeks. For these locations, the ensemble forecast indicates a median daily probability of 0.75 or greater that fewer hospital admissions will be reported in the last seven days of the forecast than the median in the last seven days of reported data.

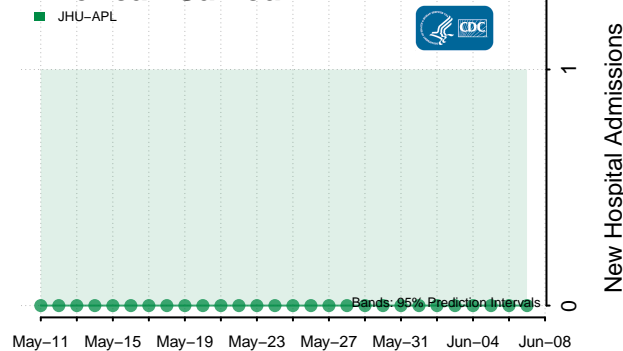
Wisconsin*



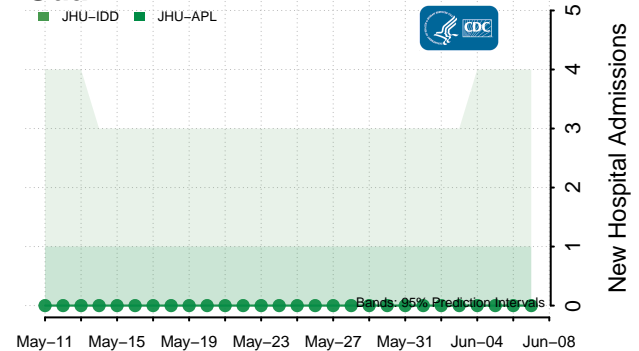
Wyoming



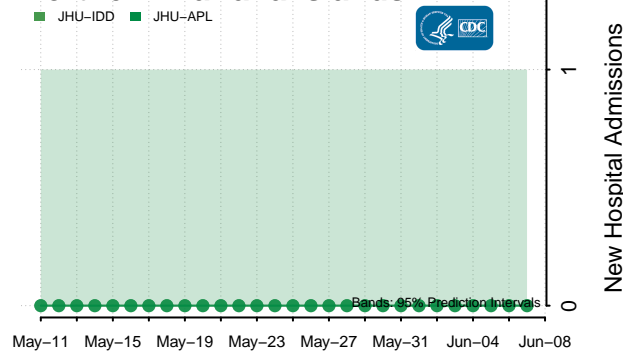
American Samoa***



Guam***



Northern Mariana Islands***



*New daily confirmed COVID-19 hospital admissions may decrease in this location over the next four weeks. For these locations, the ensemble forecast indicates a median daily probability of 0.75 or greater that fewer hospital admissions will be reported in the last seven days of the forecast than the median in the last seven days of reported data.

***The daily number of new COVID-19 hospital admissions are not reported for this jurisdiction