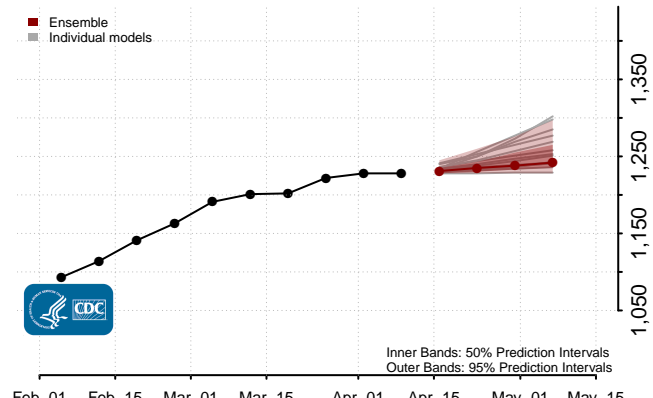
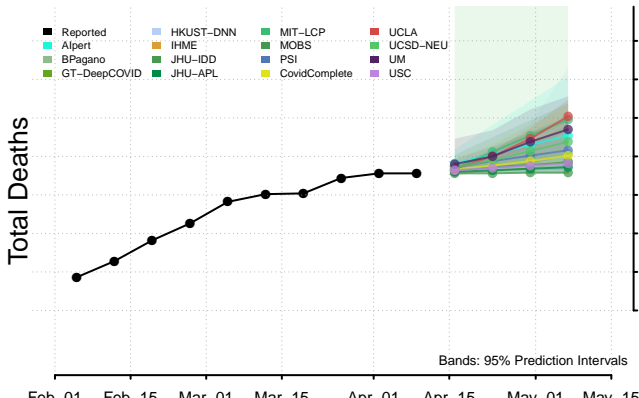
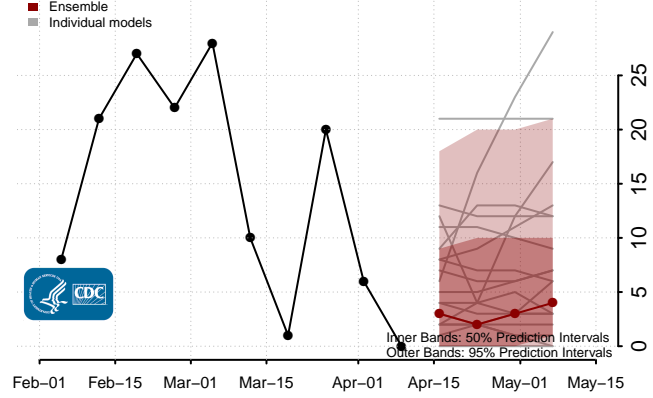
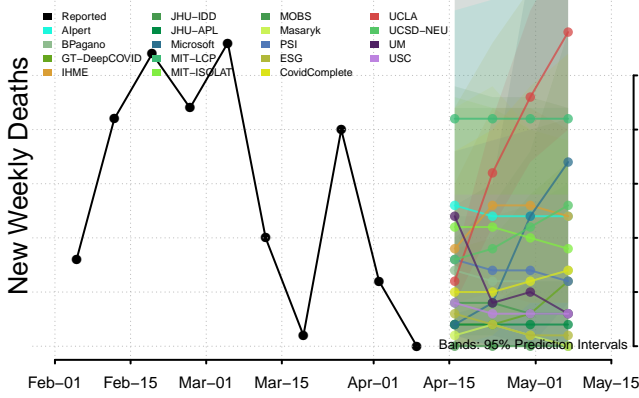
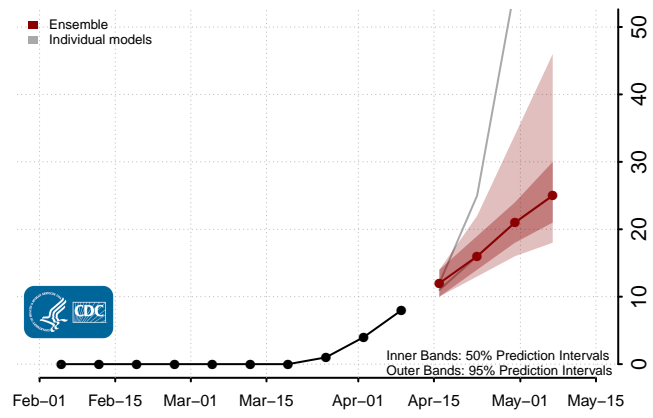
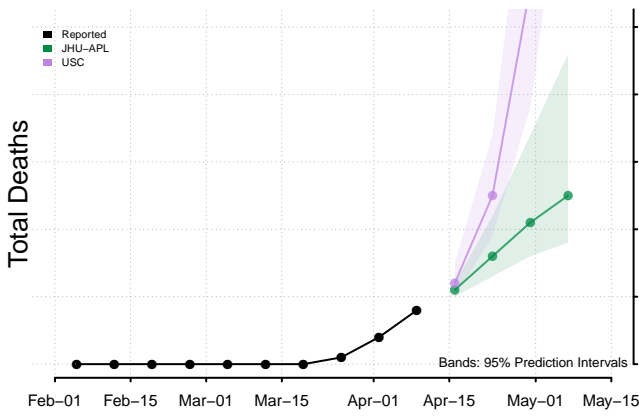
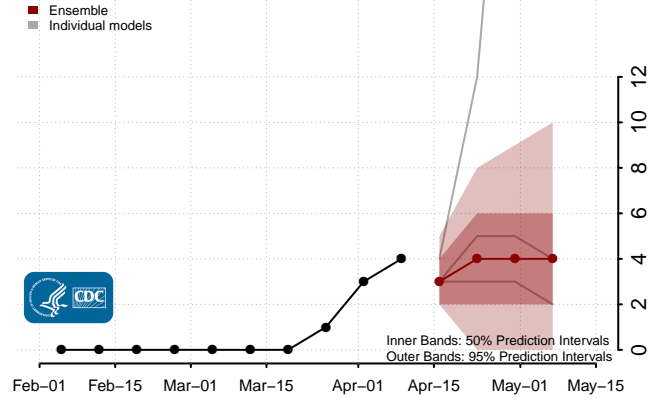
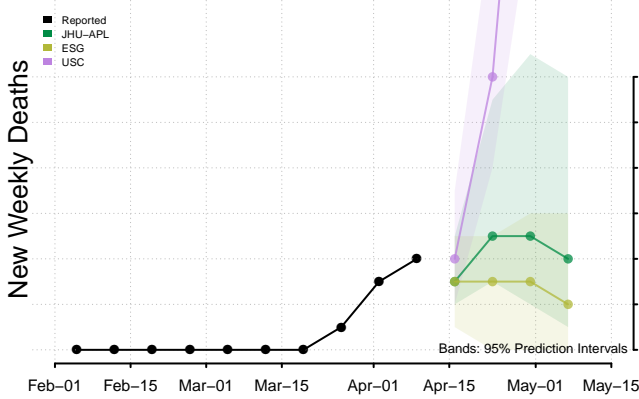


\*New weekly deaths may decrease in this location over the next four weeks. For these locations, the ensemble forecast indicates a probability of 0.75 or greater that fewer deaths will be reported in week four of the forecast than in the last reported week.

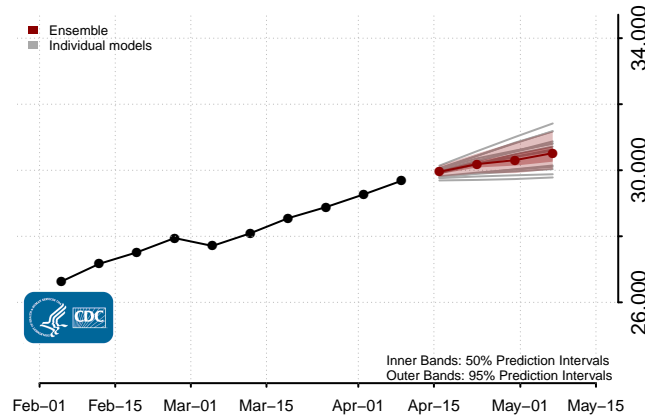
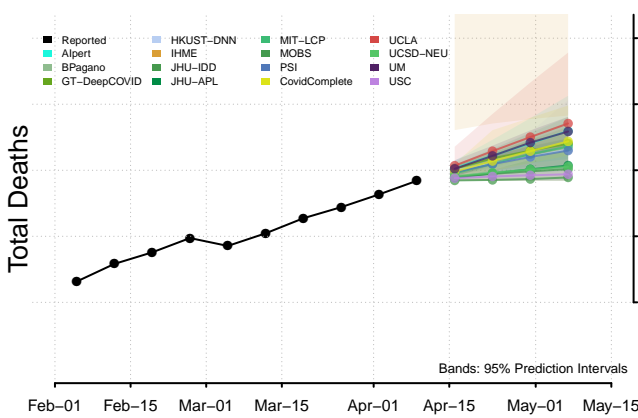
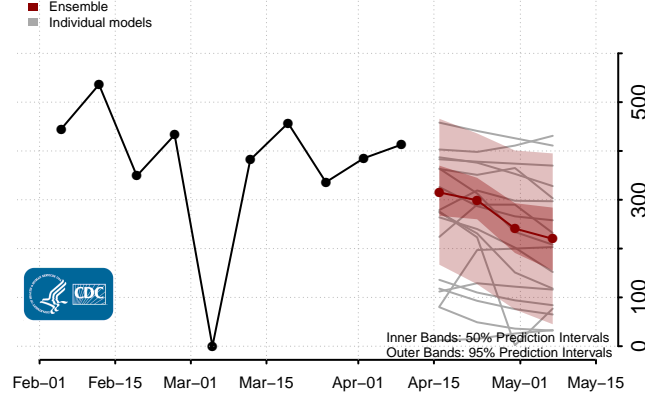
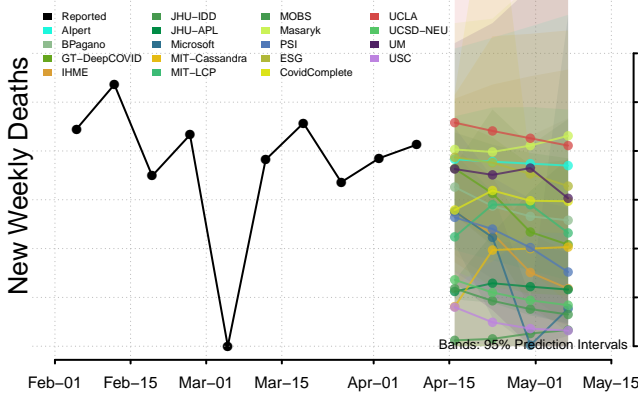
### Alaska



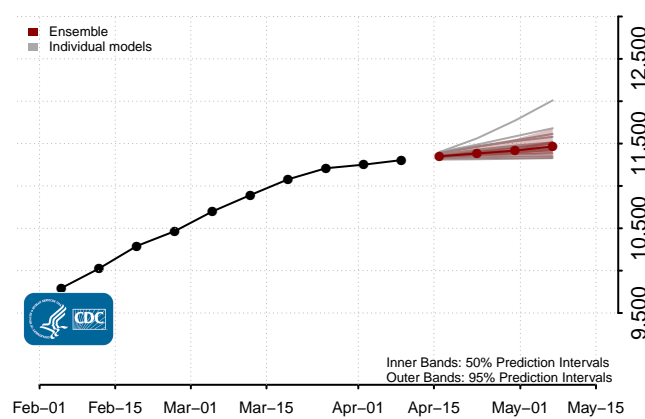
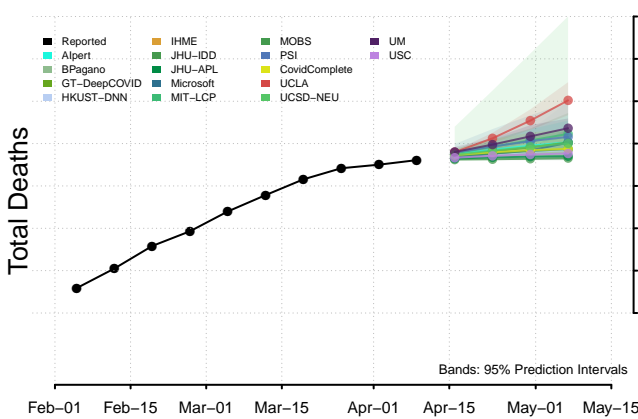
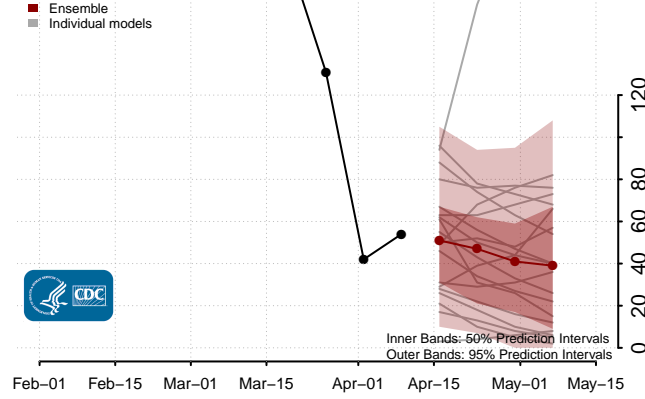
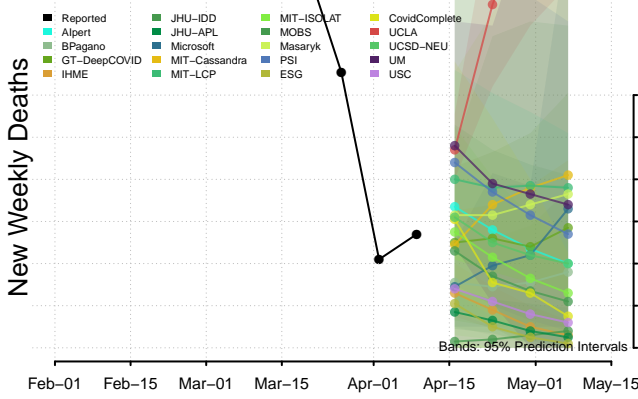
### American Samoa



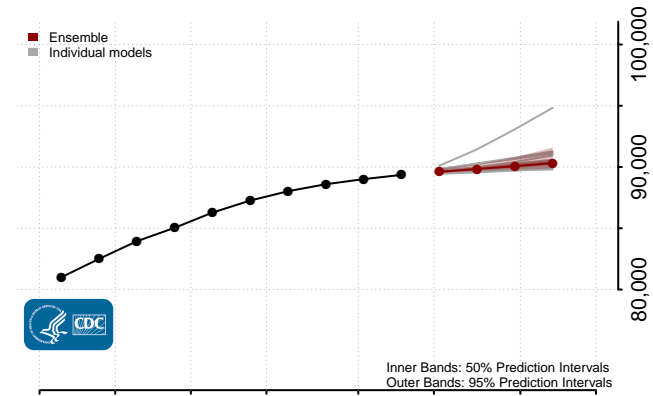
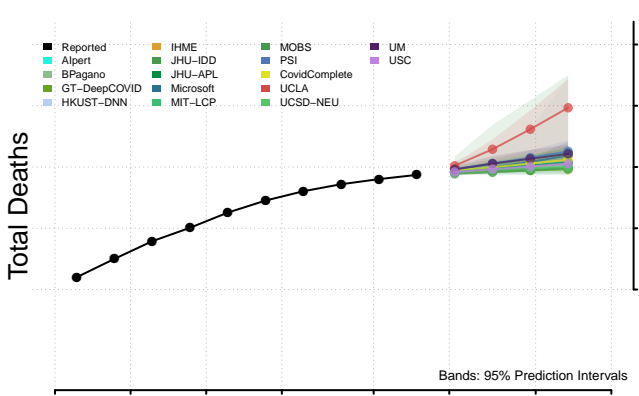
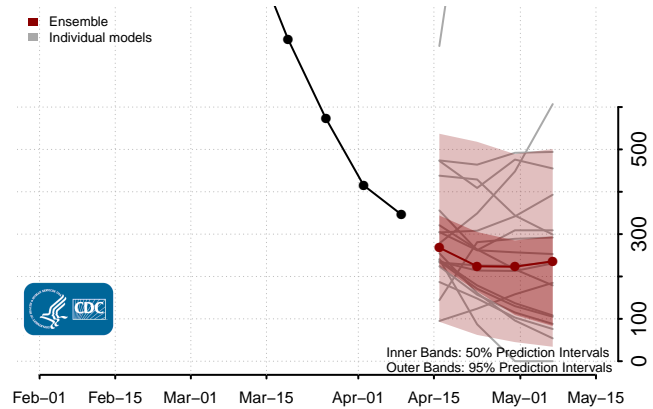
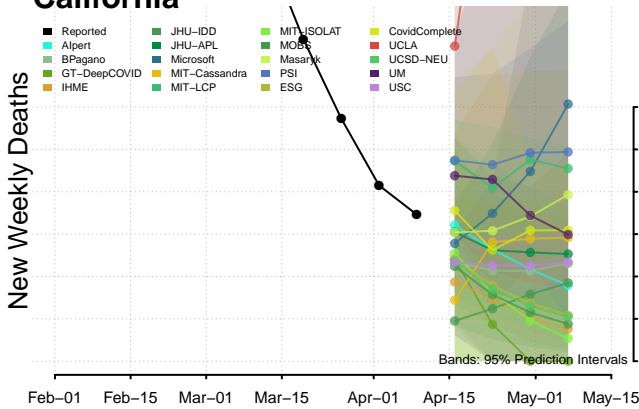
### Arizona



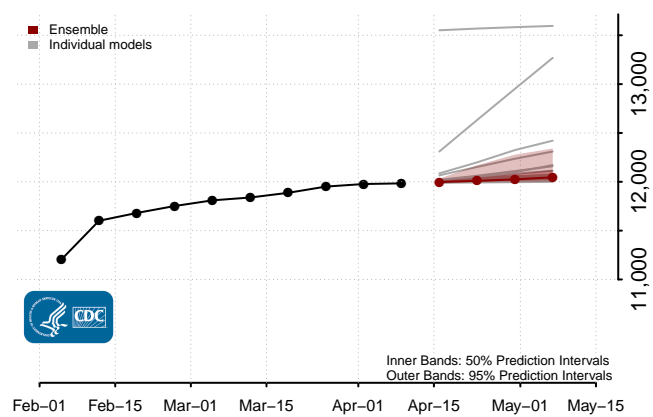
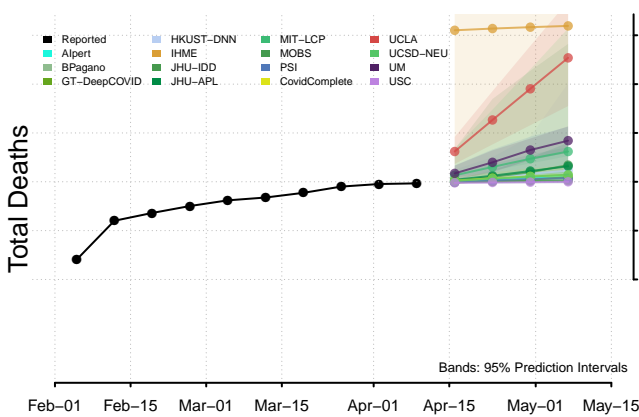
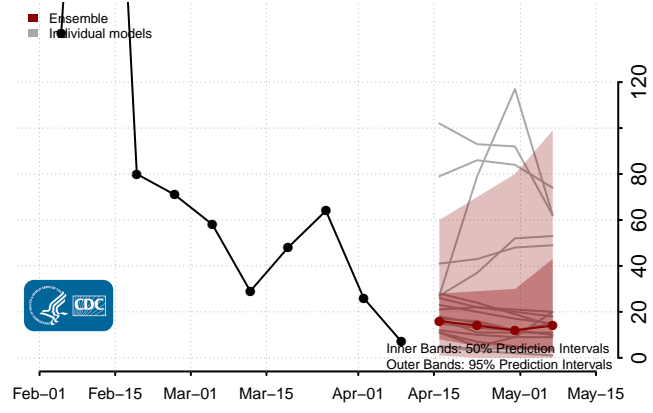
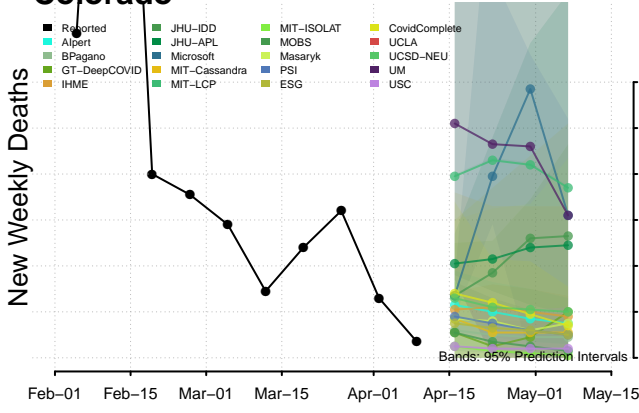
### Arkansas



### California\*

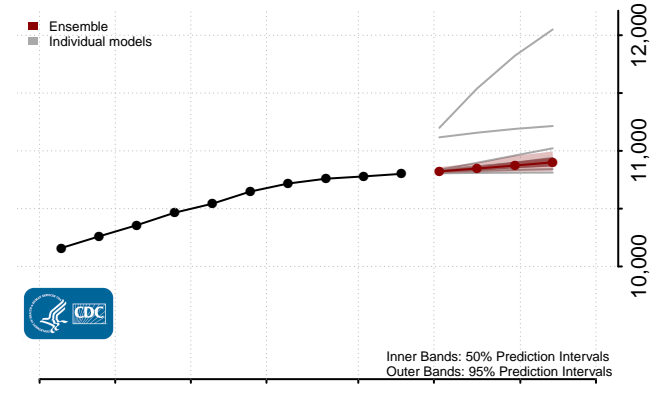
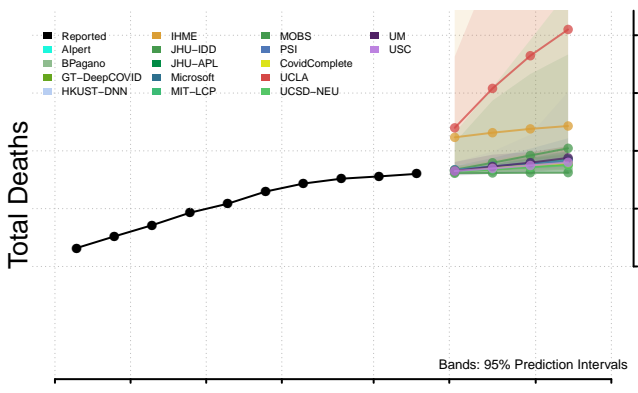
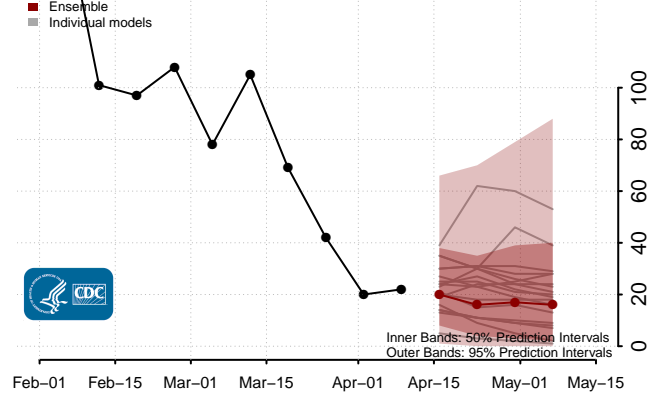
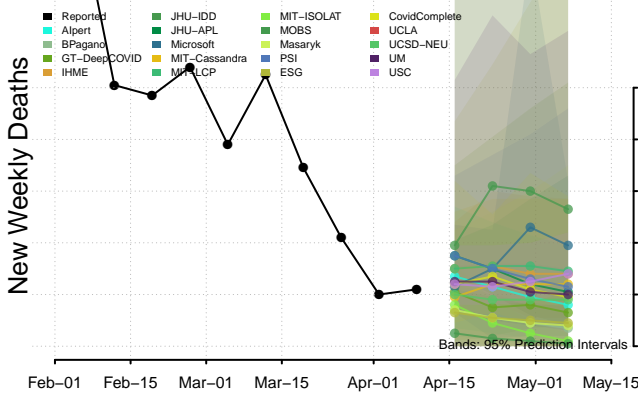


### Colorado

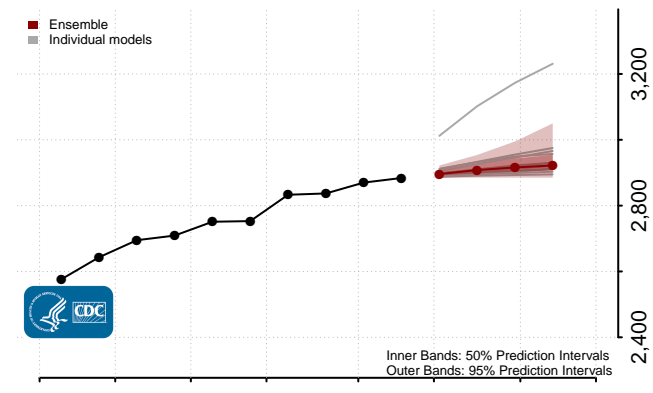
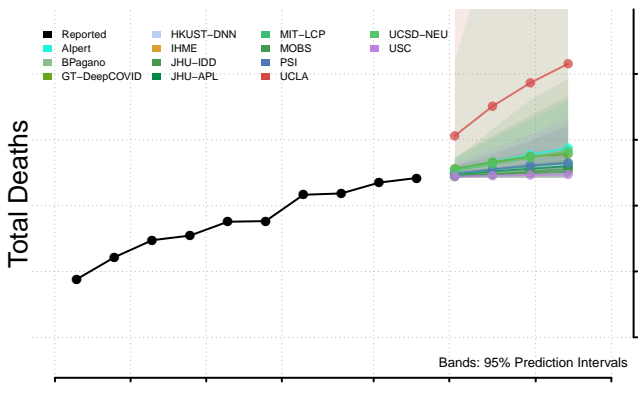
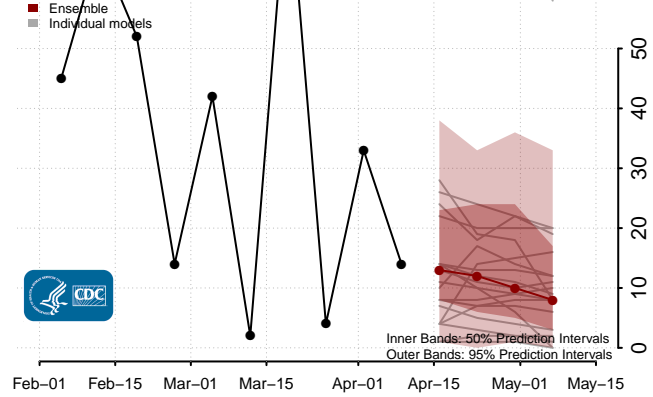
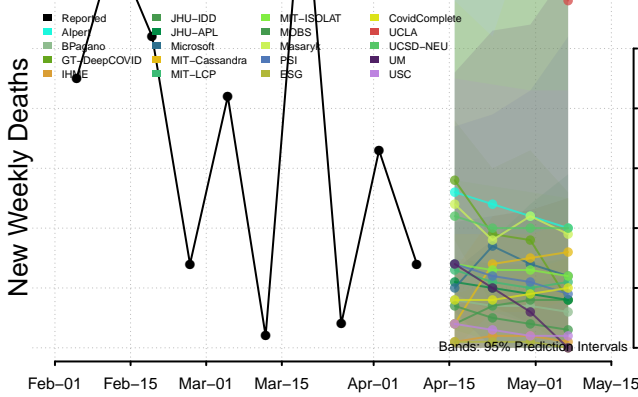


\*New weekly deaths may decrease in this location over the next four weeks. For these locations, the ensemble forecast indicates a probability of 0.75 or greater that fewer deaths will be reported in week four of the forecast than in the last reported week.

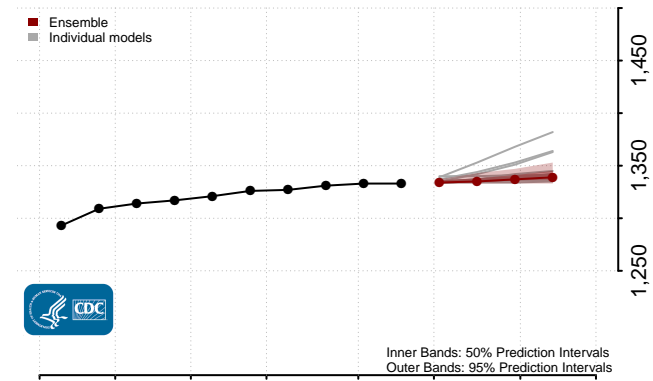
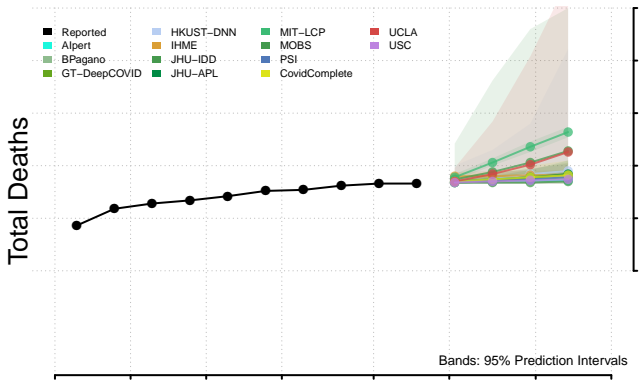
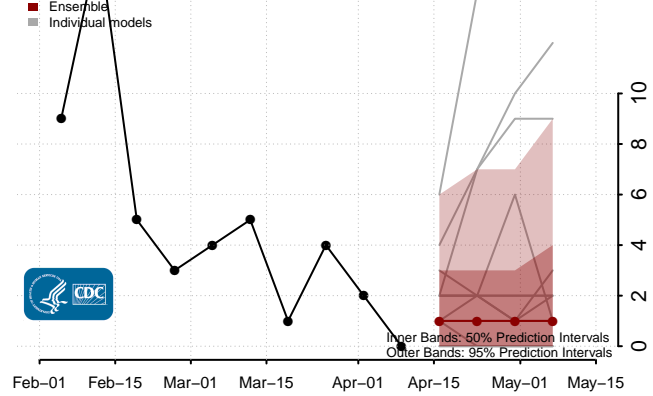
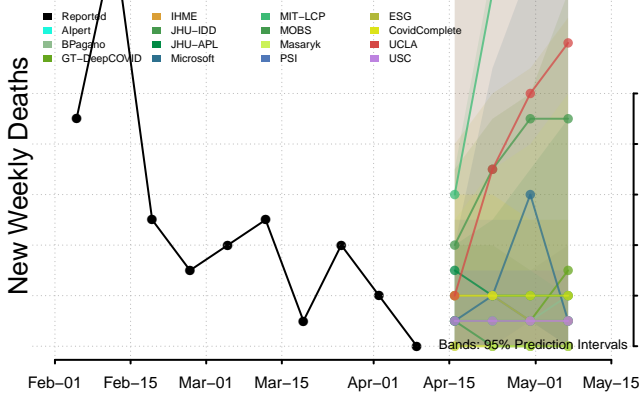
### Connecticut



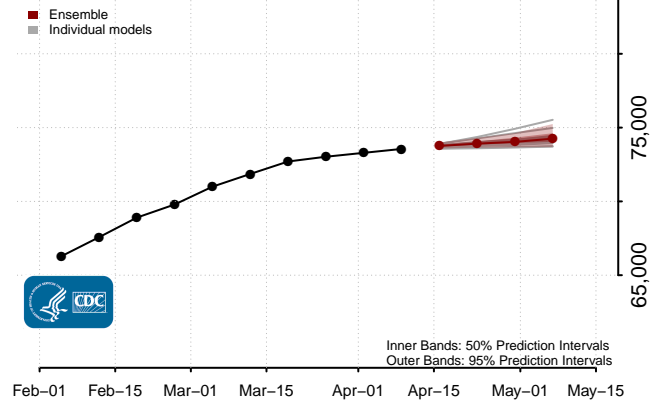
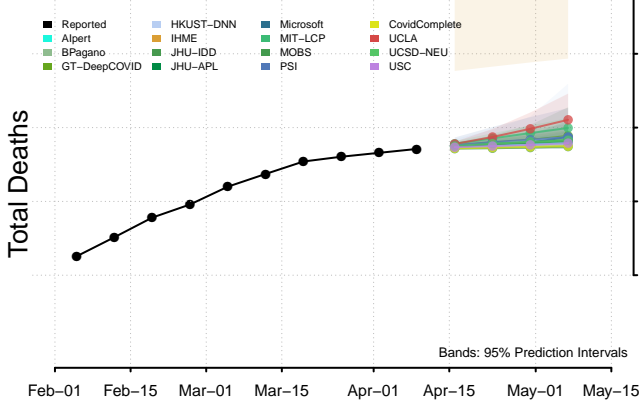
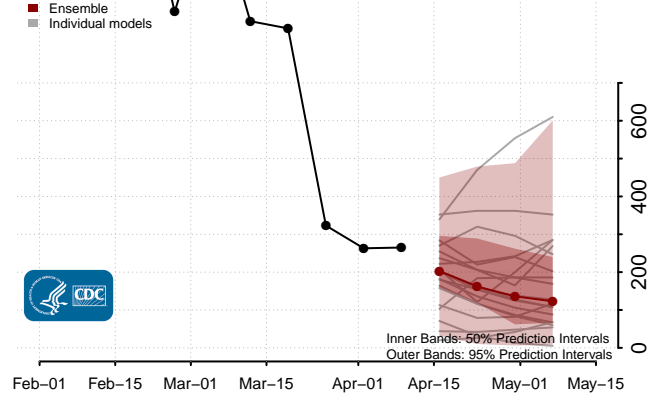
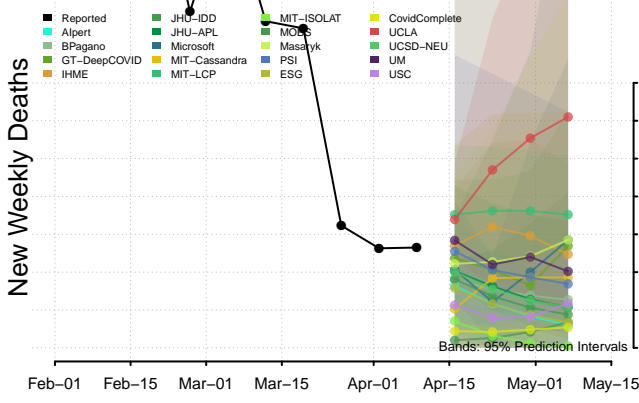
### Delaware



### District of Columbia

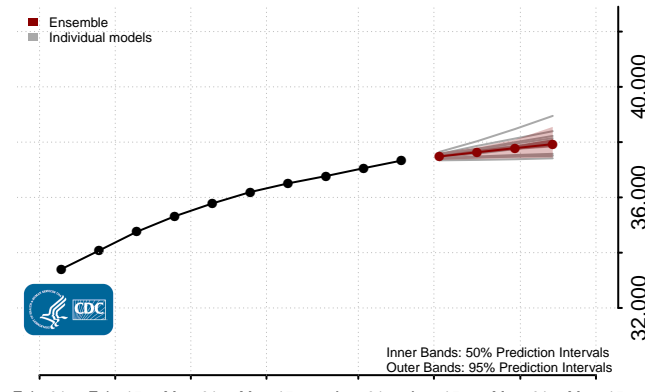
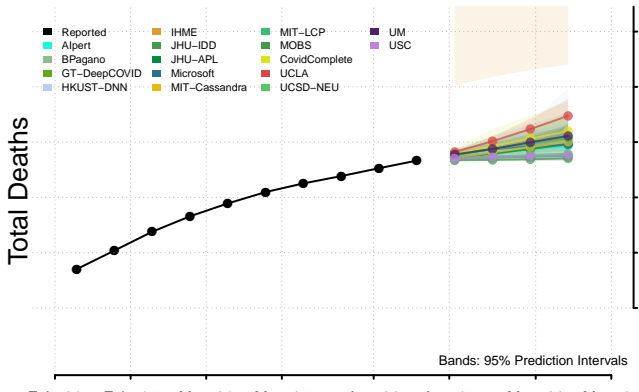
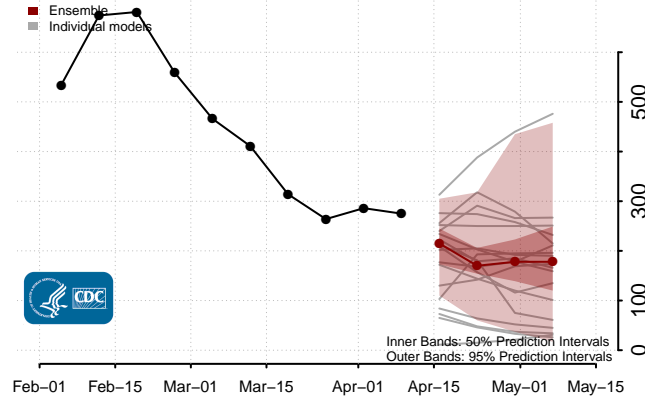
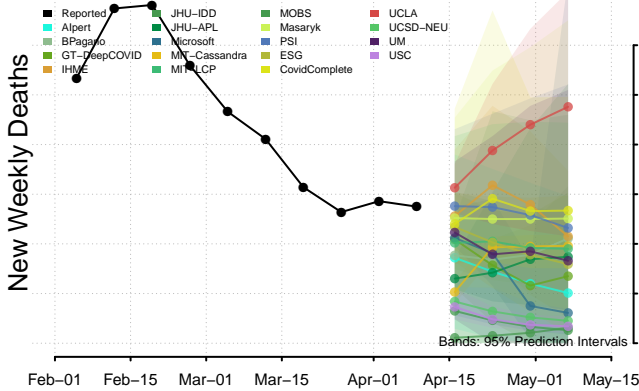


### Florida\*

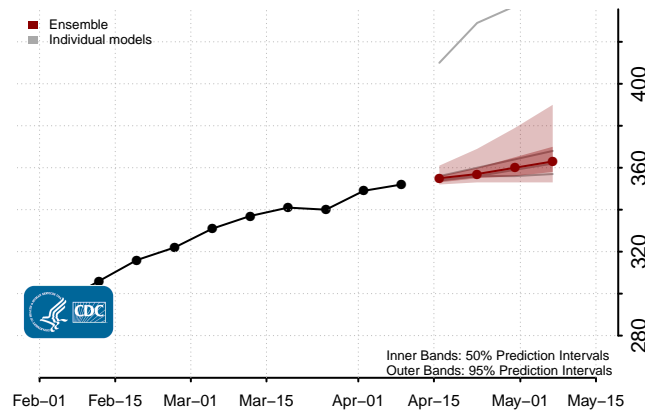
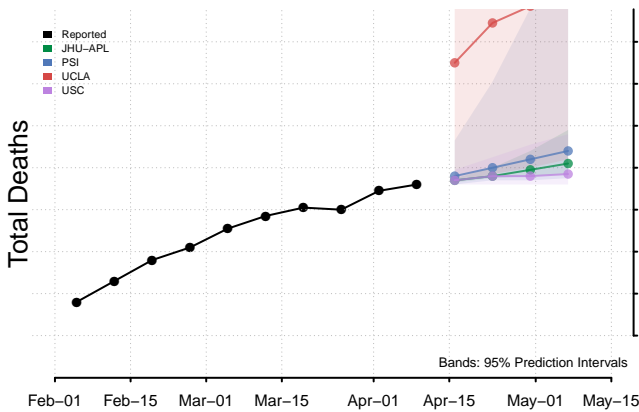
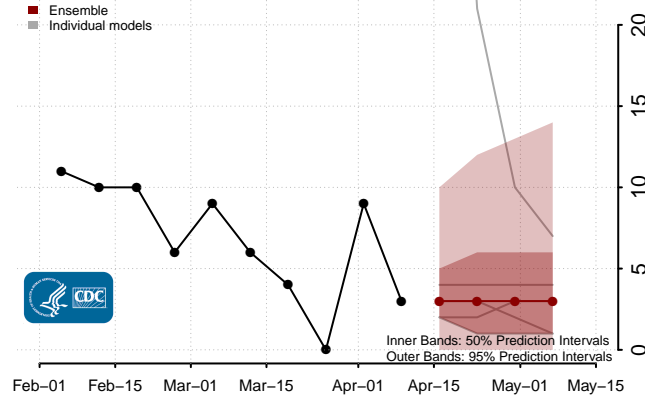
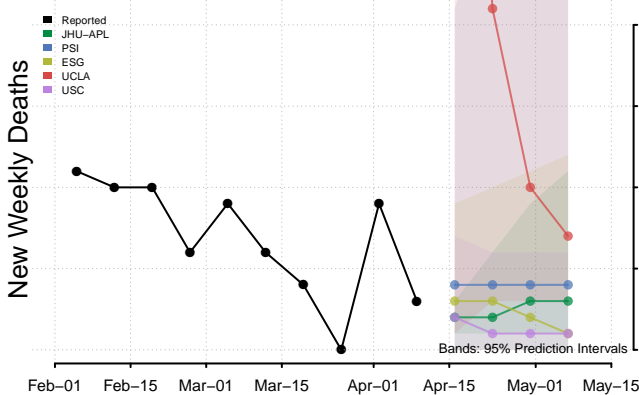


\*New weekly deaths may decrease in this location over the next four weeks. For these locations, the ensemble forecast indicates a probability of 0.75 or greater that fewer deaths will be reported in week four of the forecast than in the last reported week.

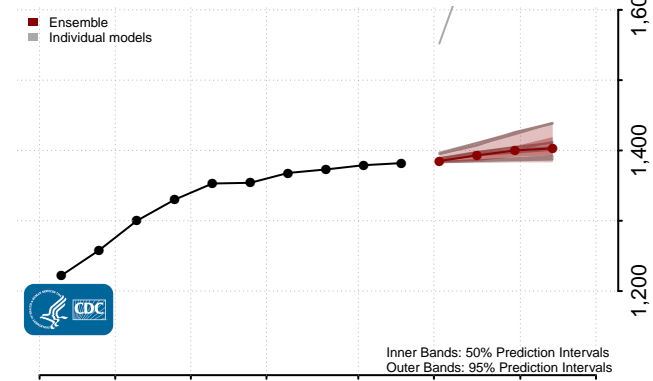
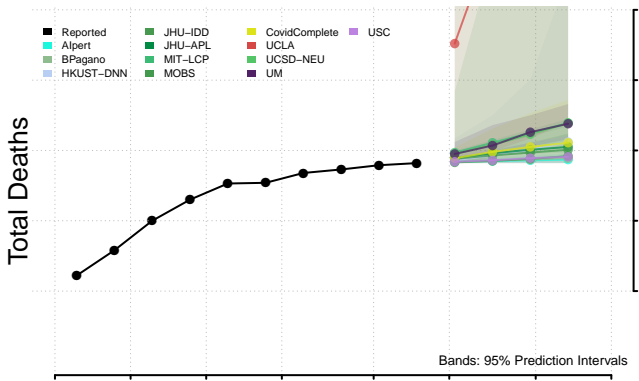
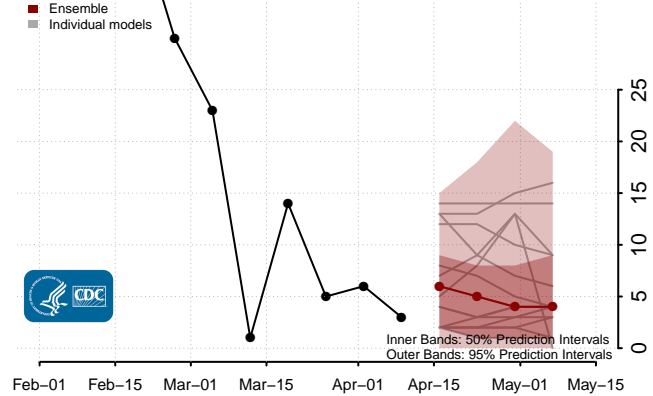
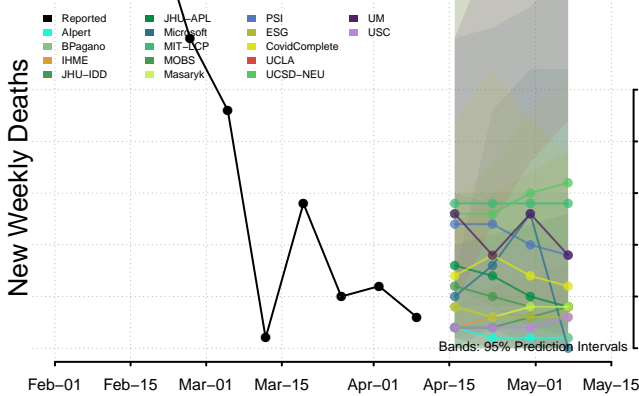
### Georgia



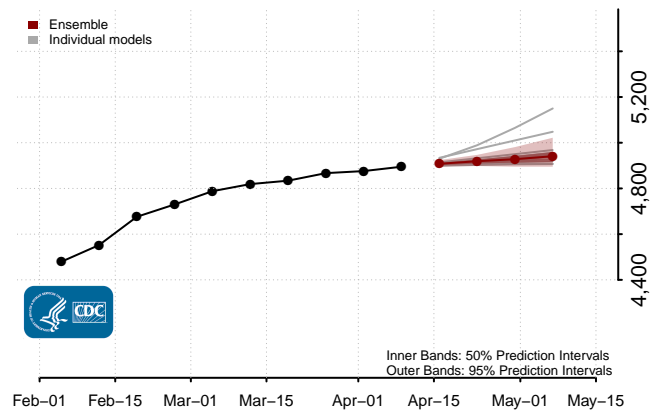
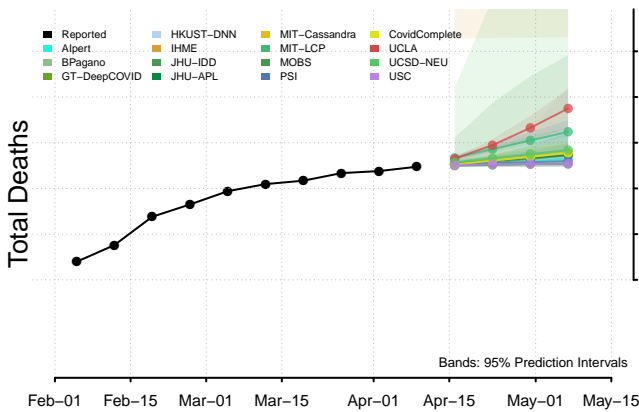
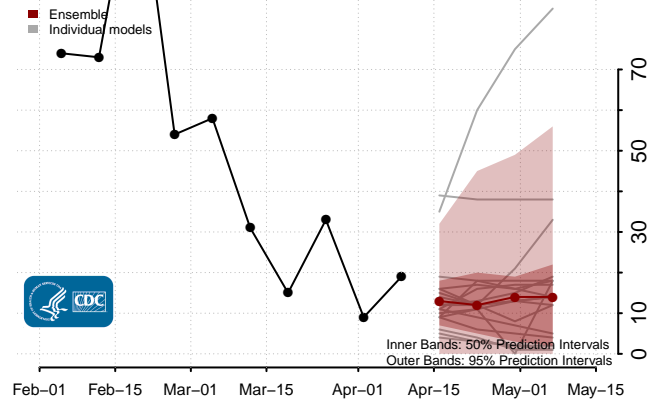
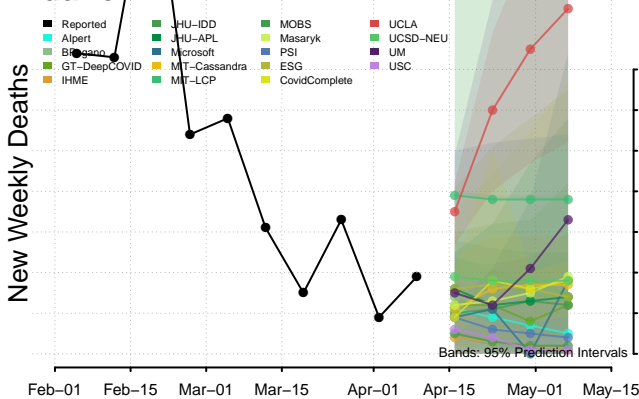
### Guam



### Hawaii

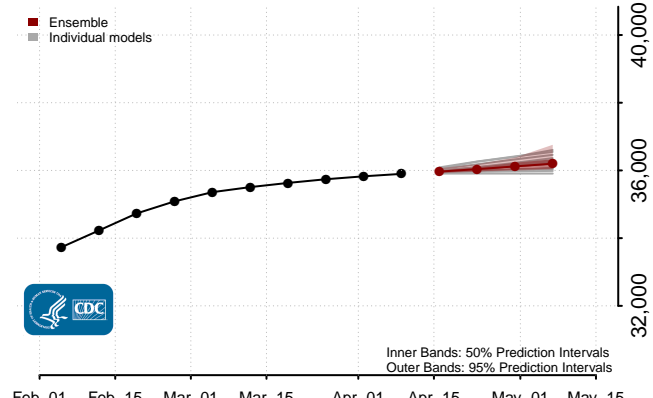
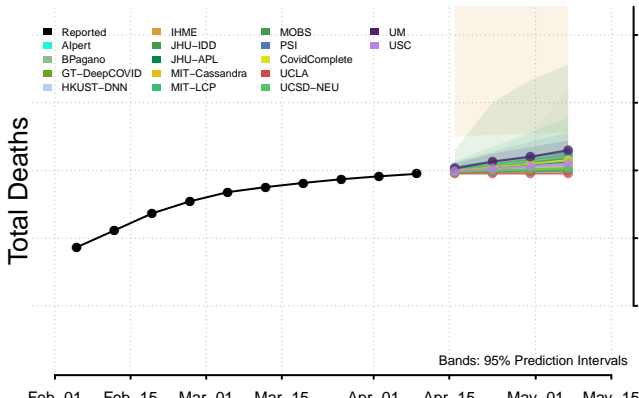
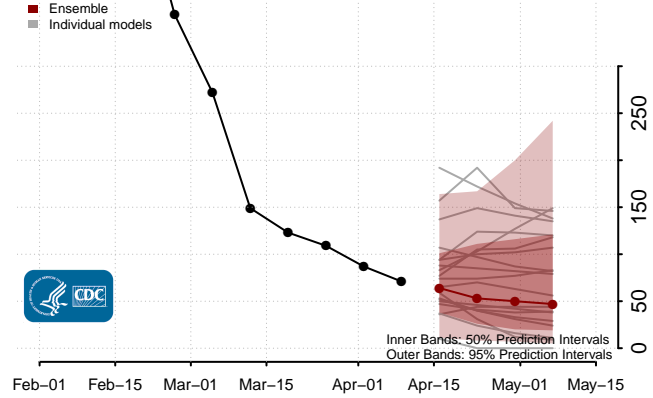
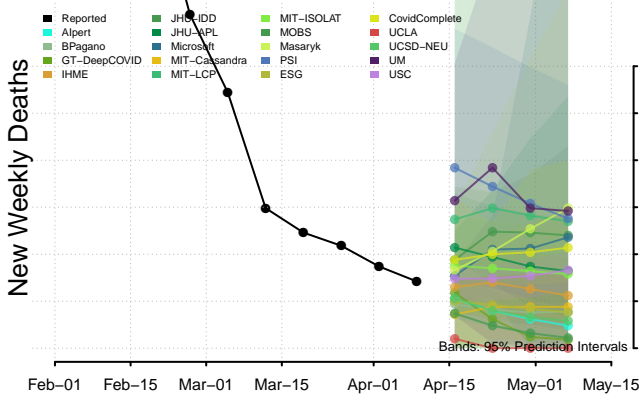


### Idaho

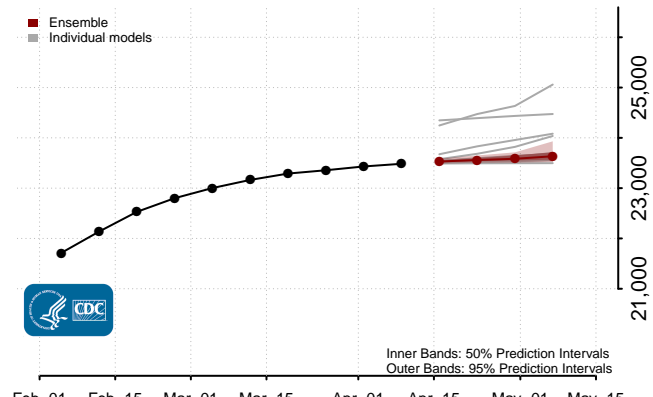
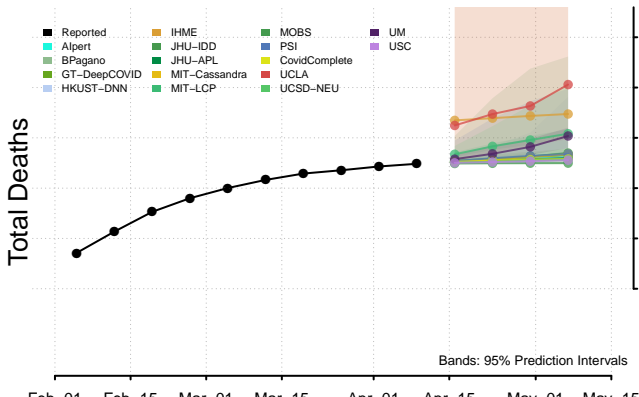
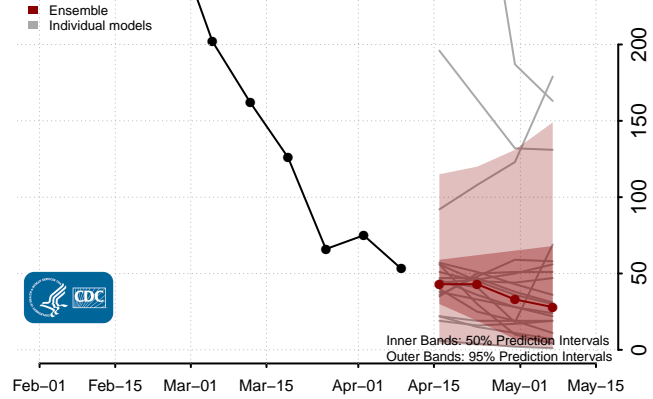
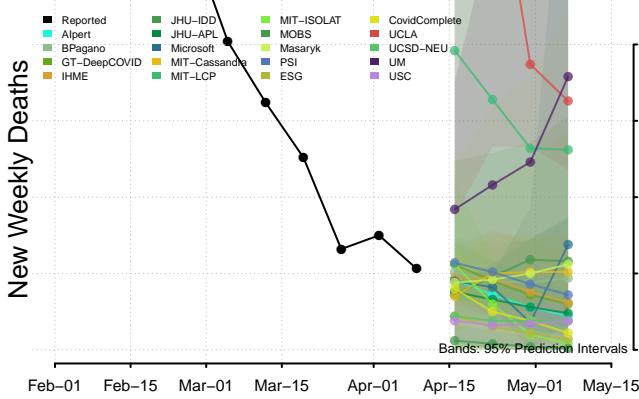


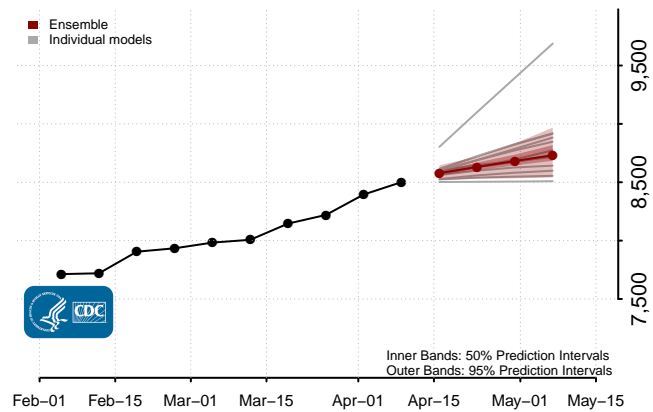
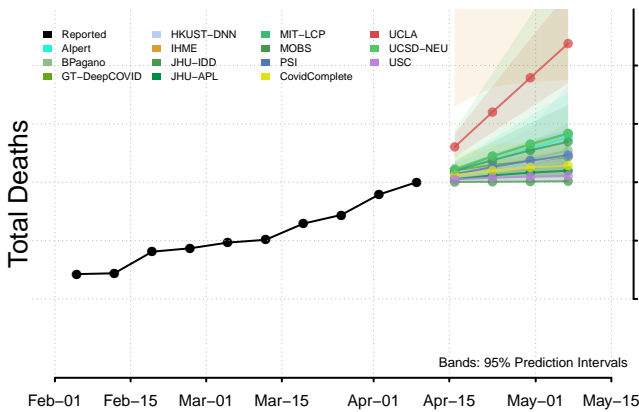
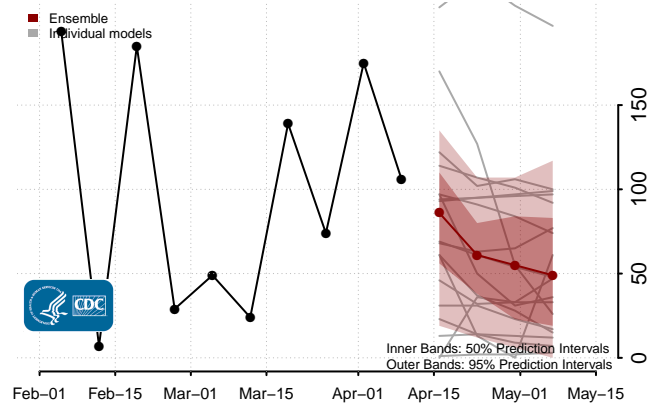
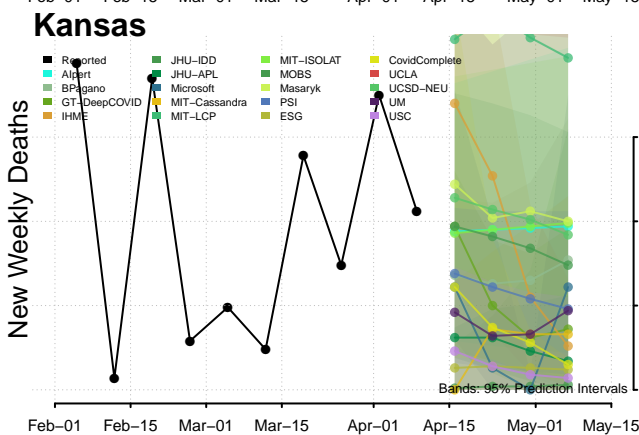
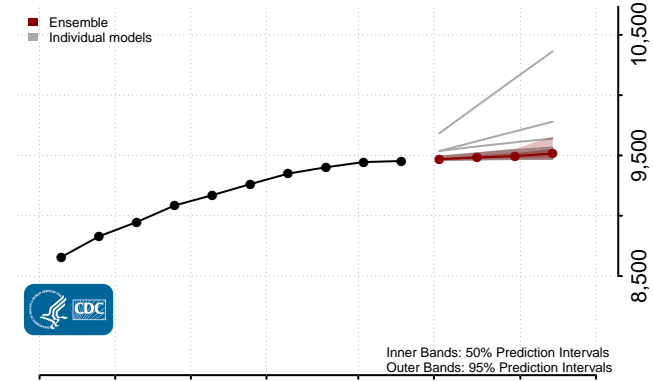
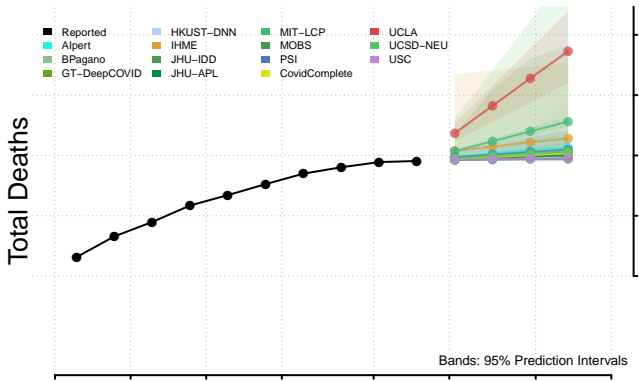
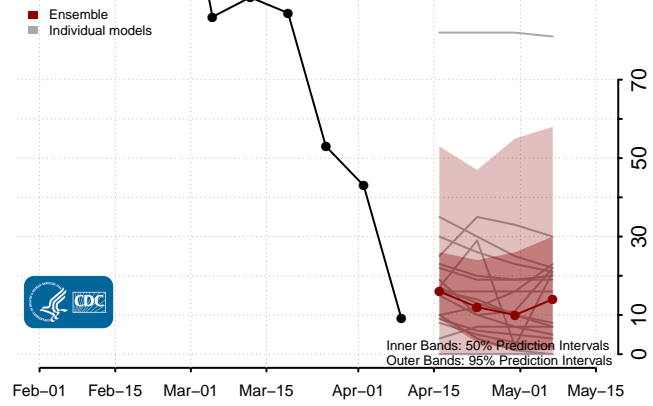
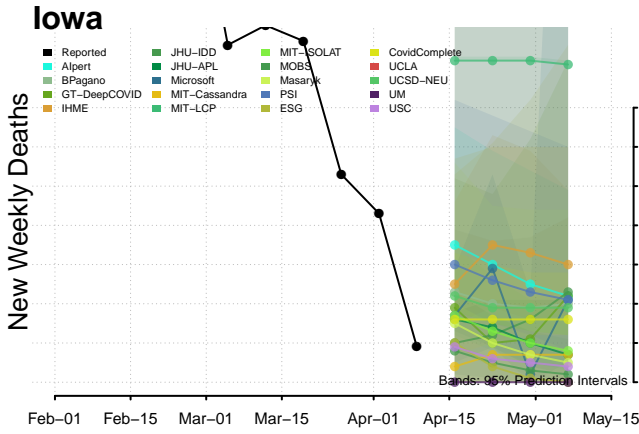


### Illinois

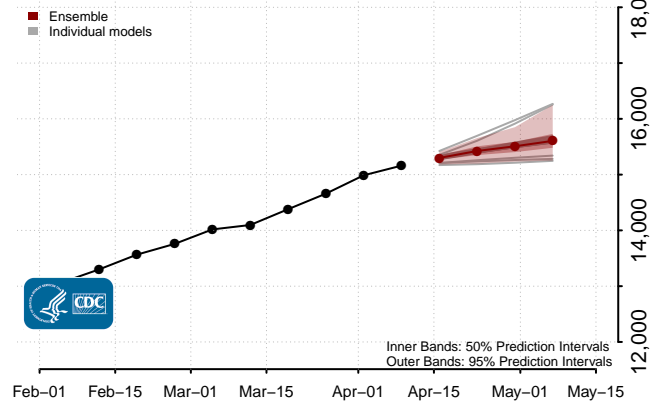
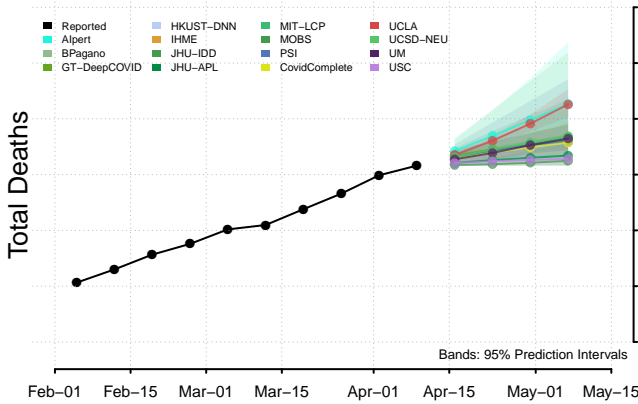
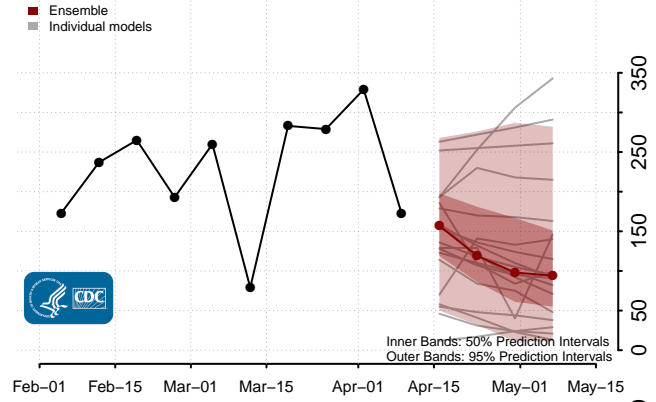
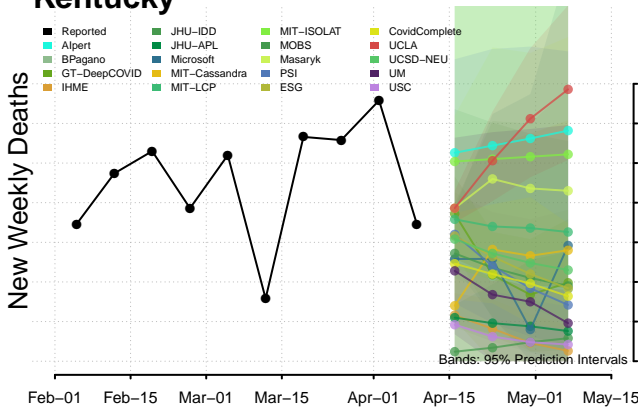


### Indiana

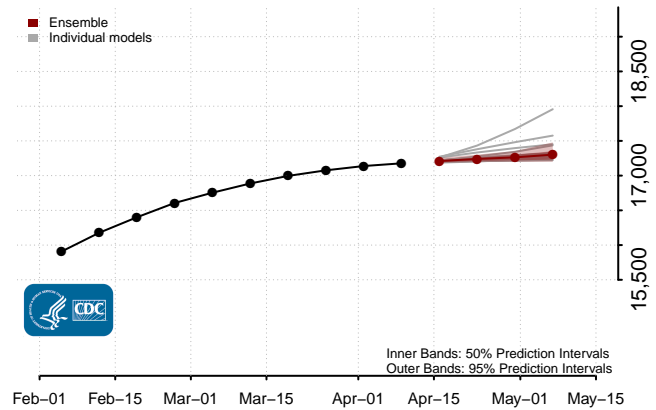
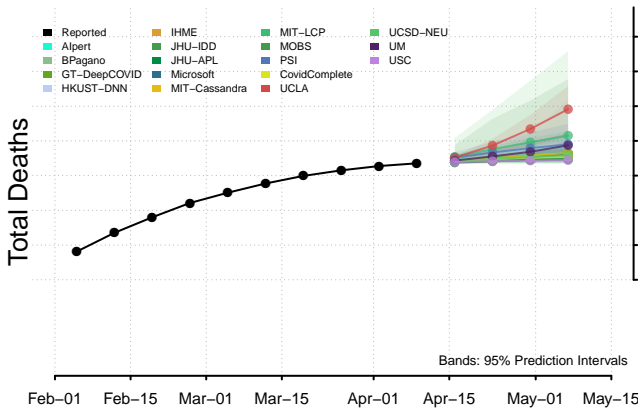
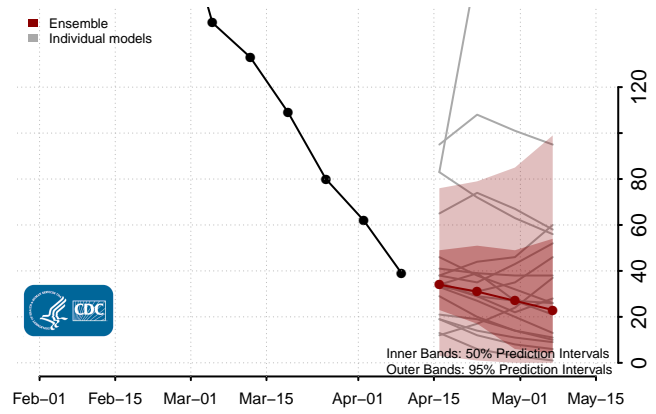
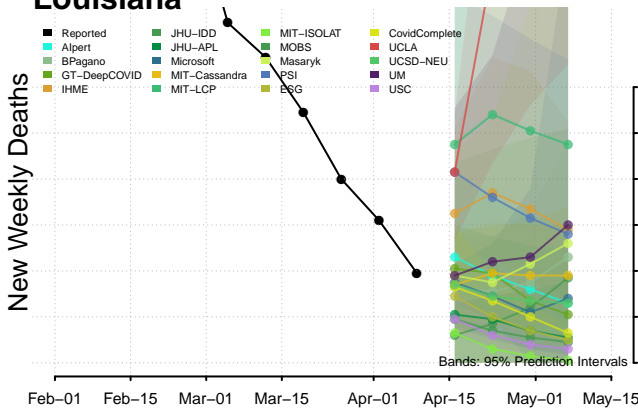




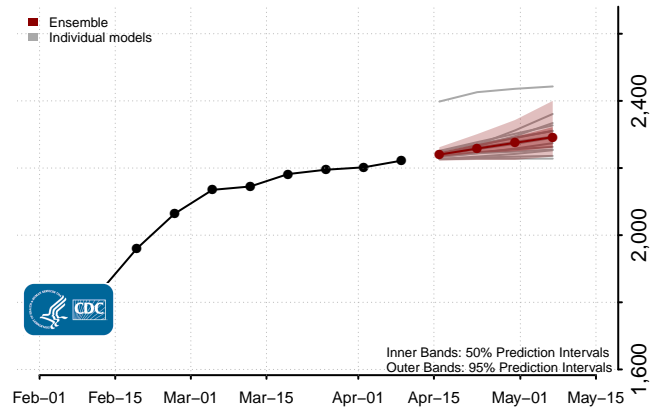
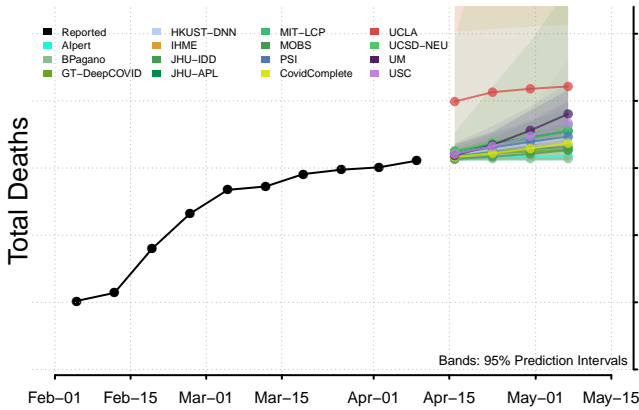
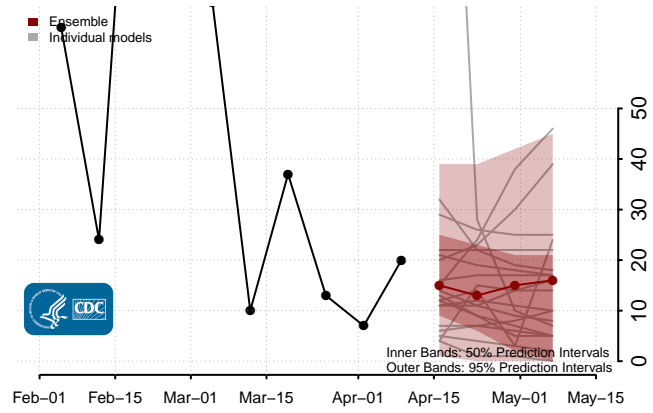
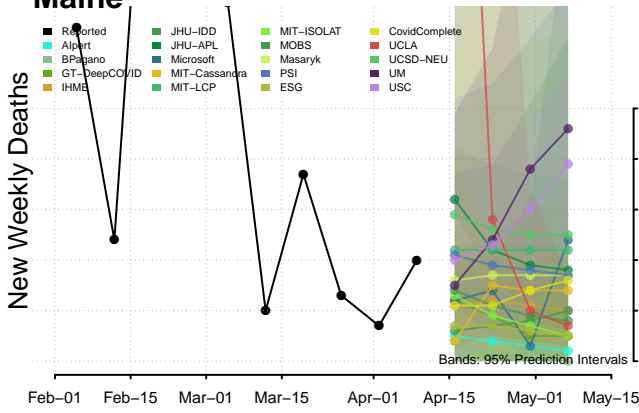
### Kentucky



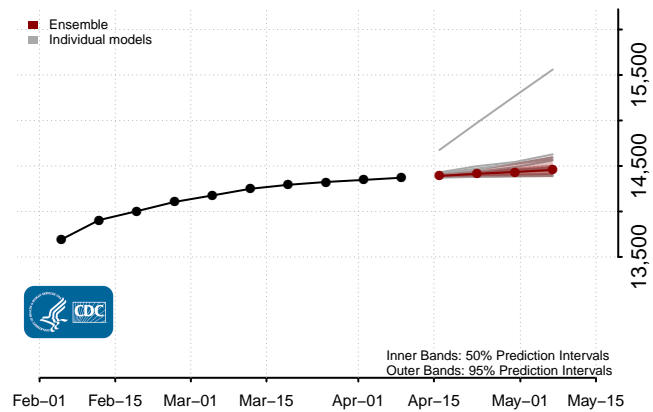
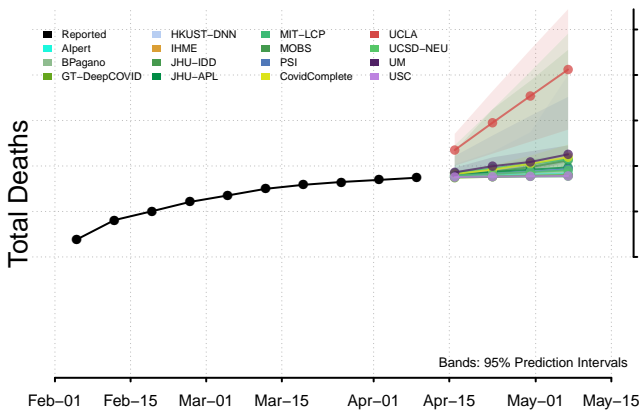
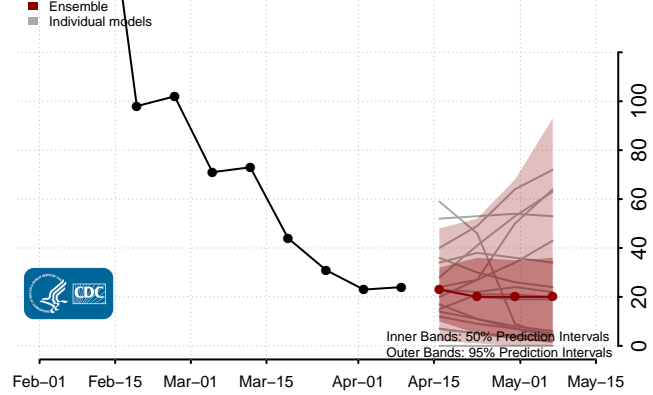
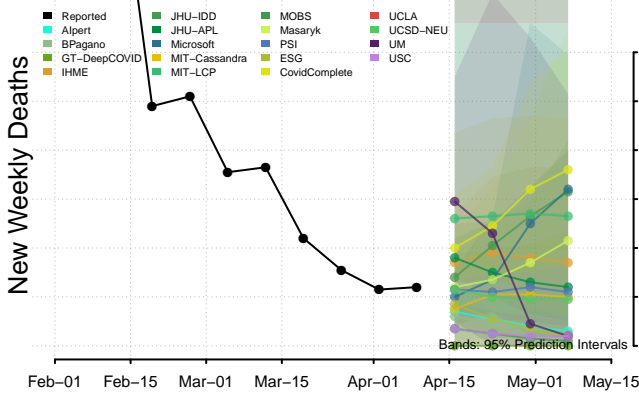
### Louisiana



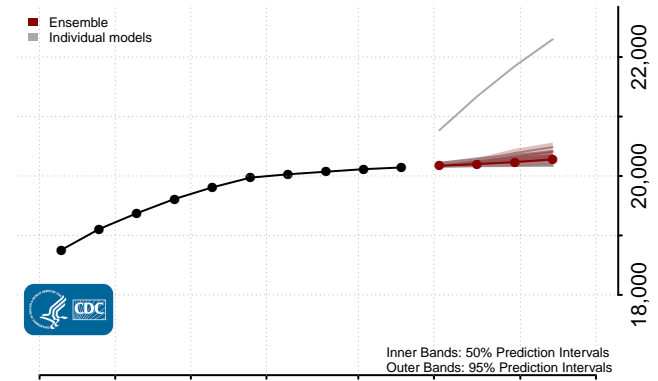
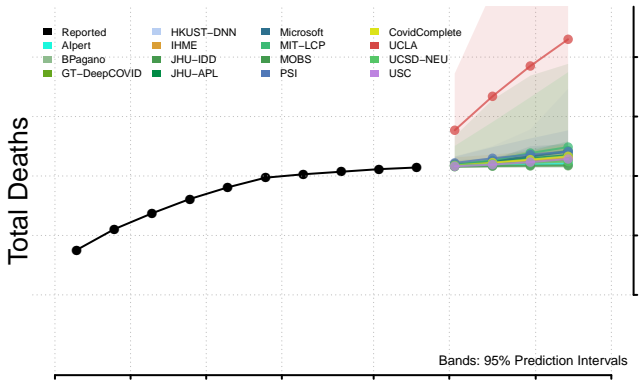
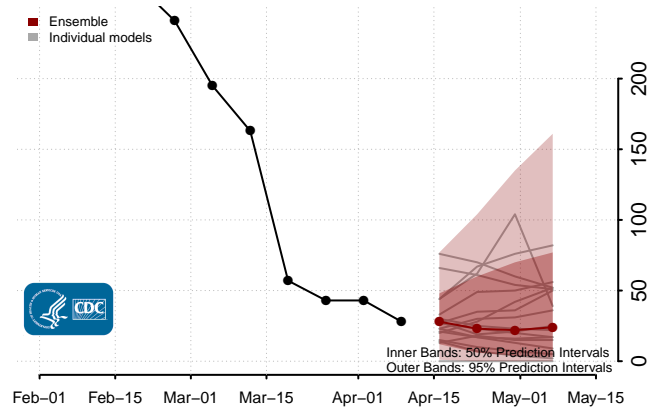
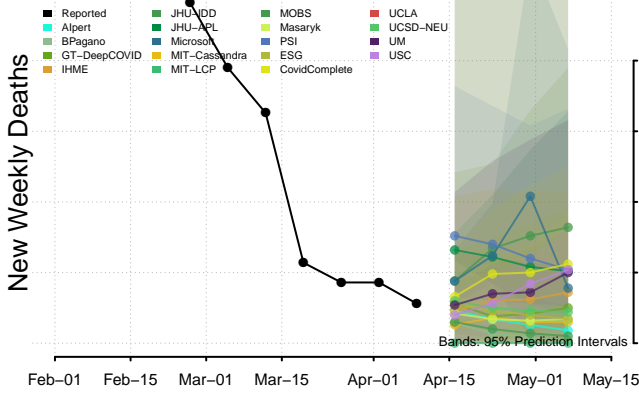
### Maine



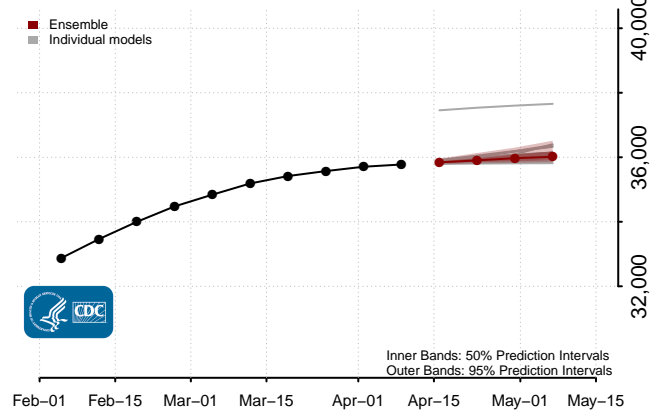
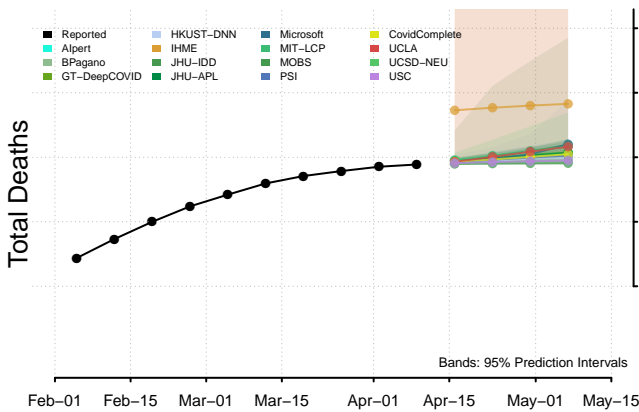
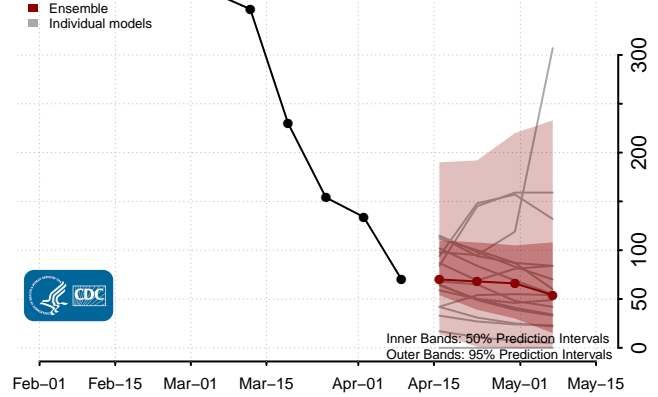
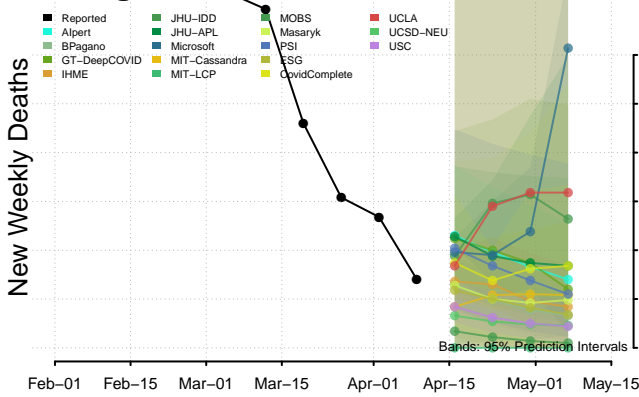
### Maryland



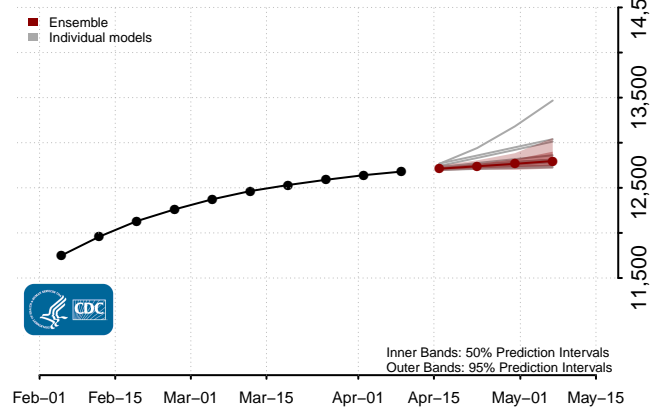
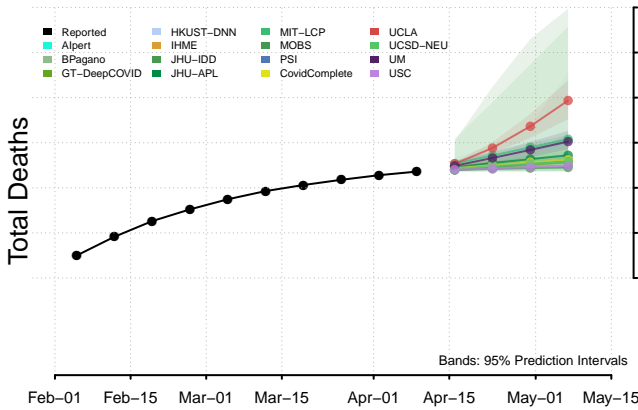
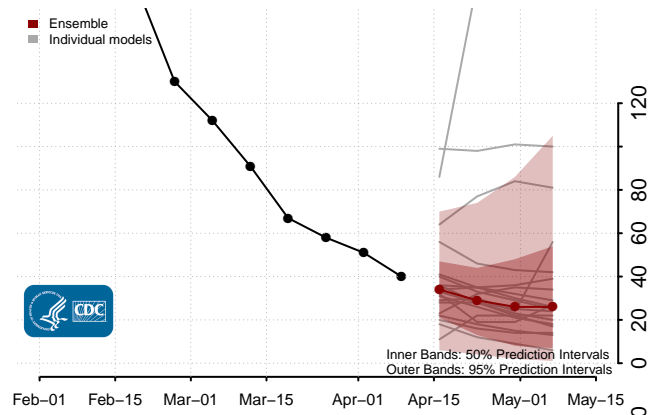
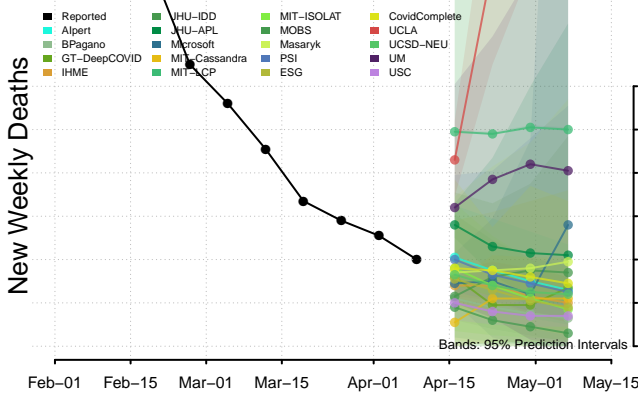
### Massachusetts



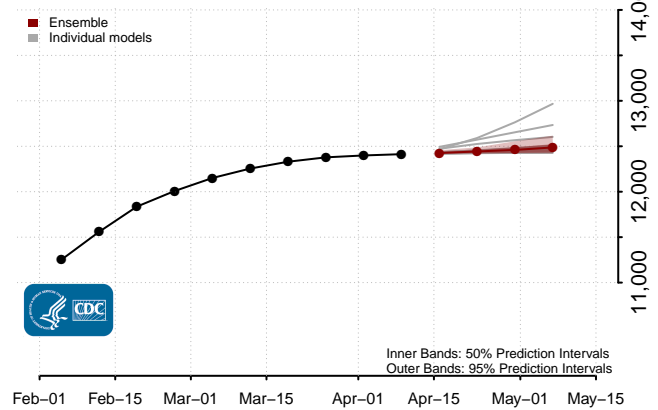
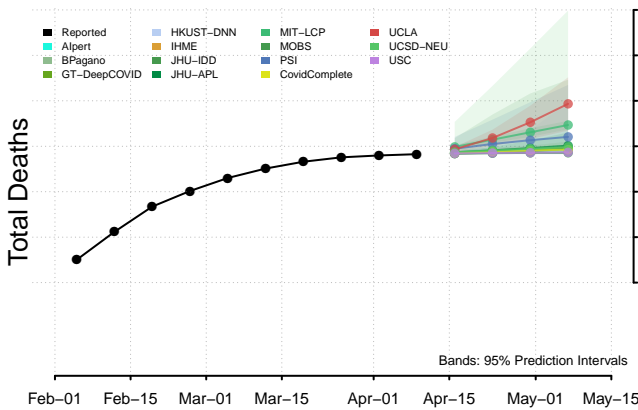
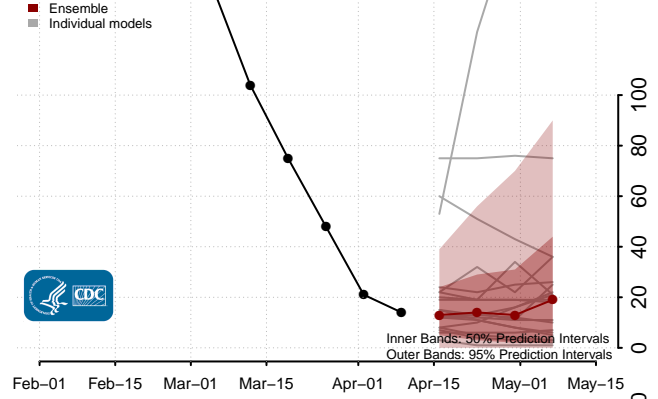
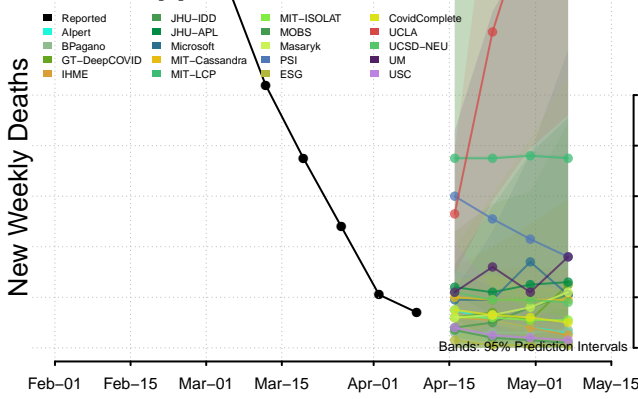
### Michigan



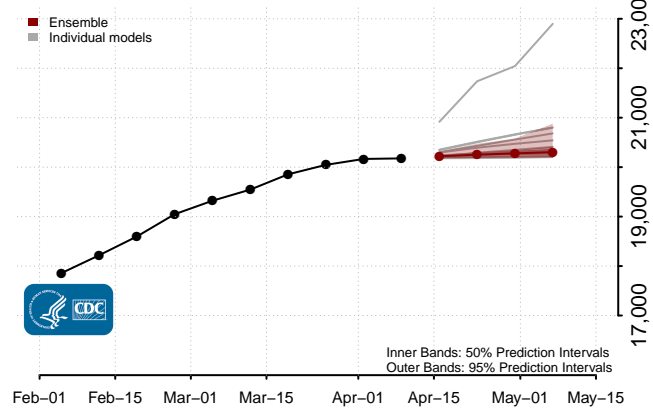
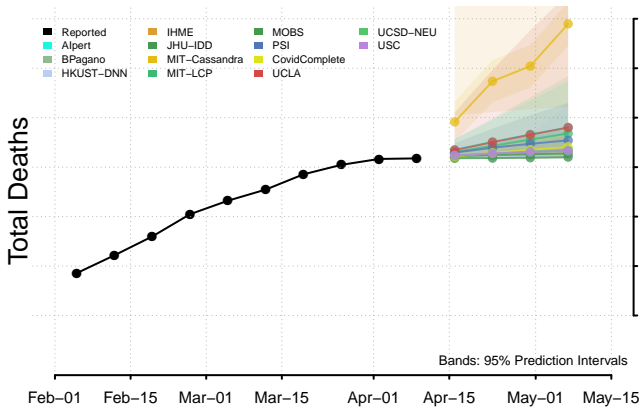
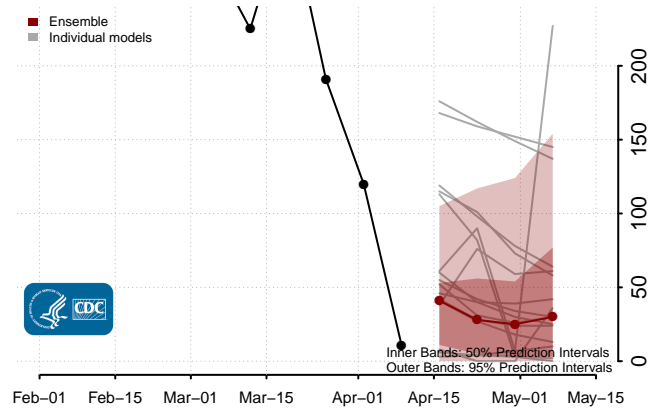
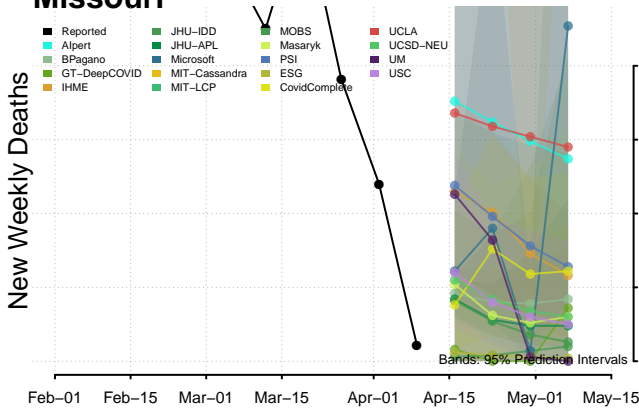
### Minnesota



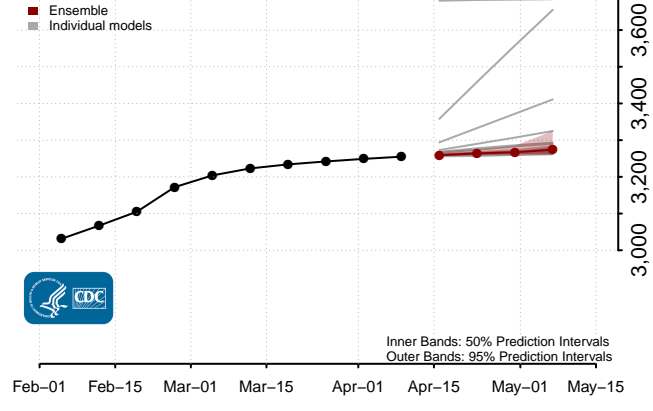
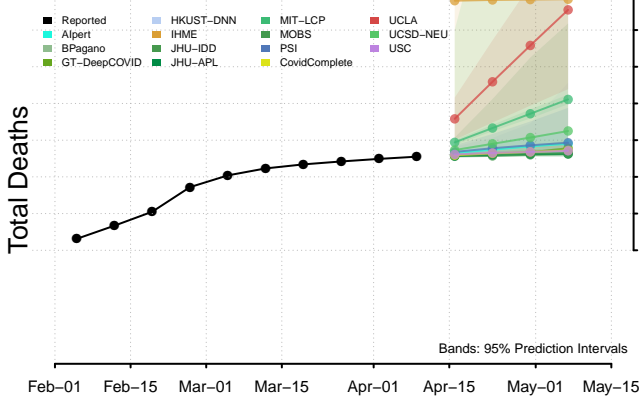
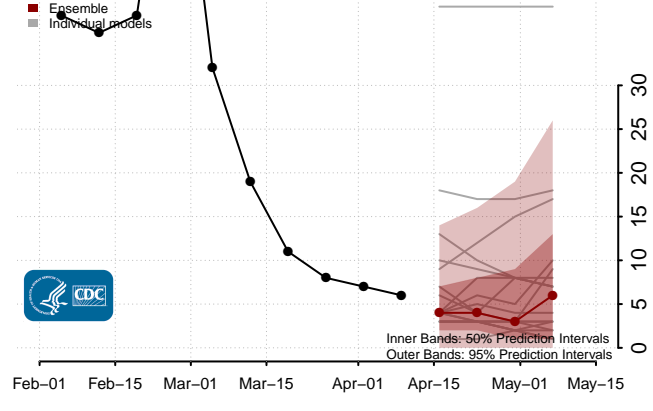
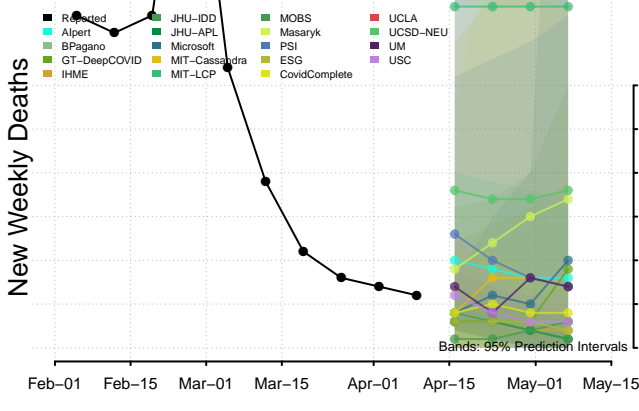
### Mississippi



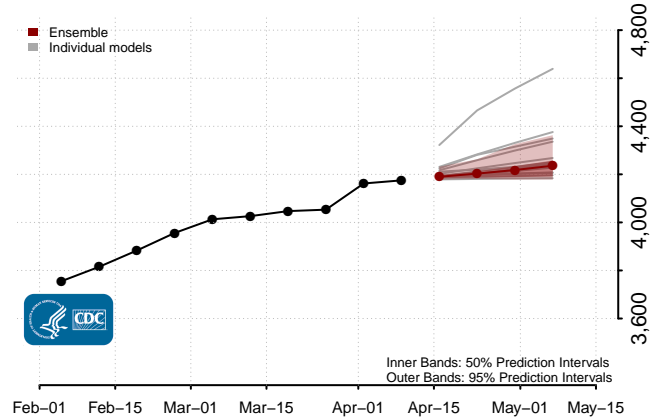
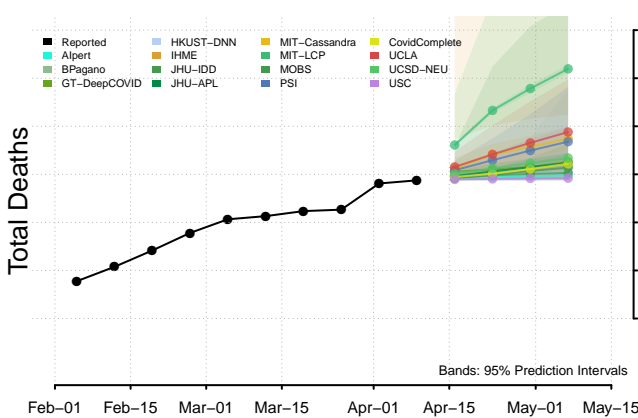
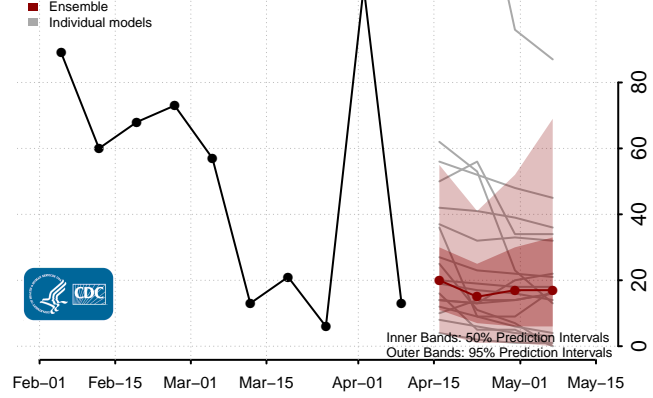
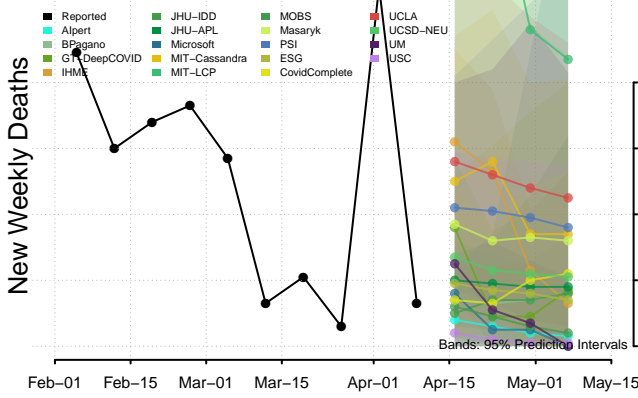
### Missouri



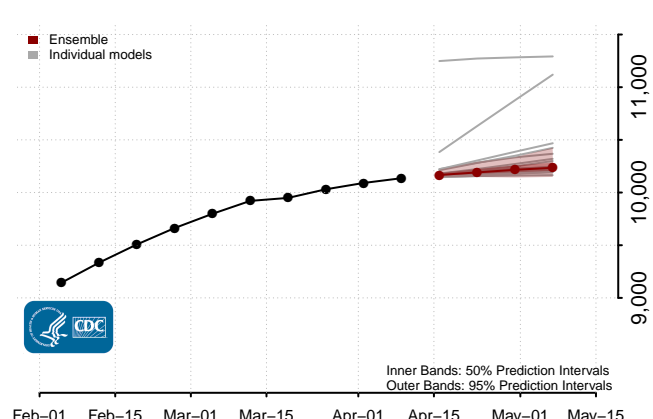
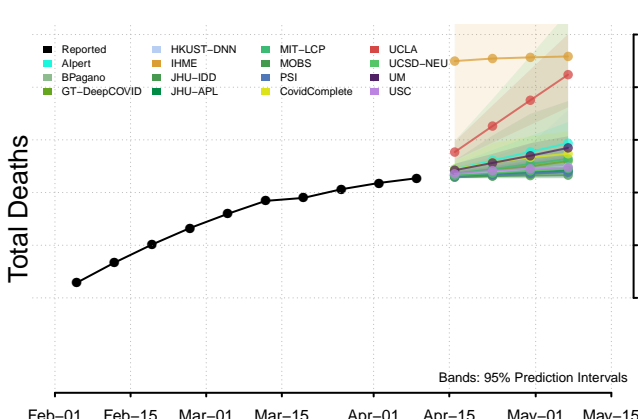
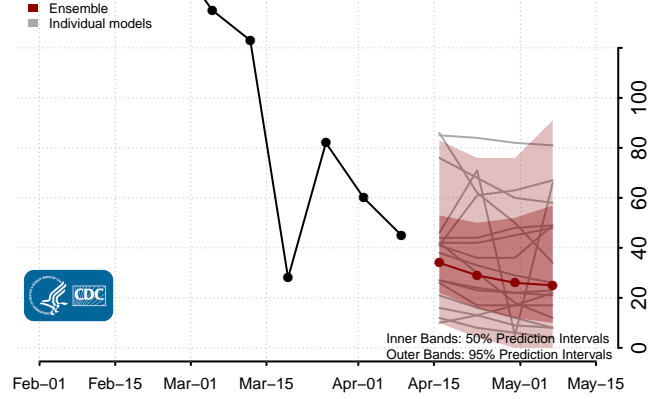
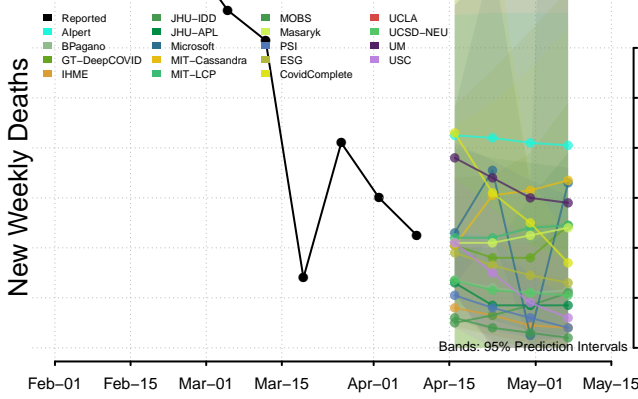
### Montana



### Nebraska

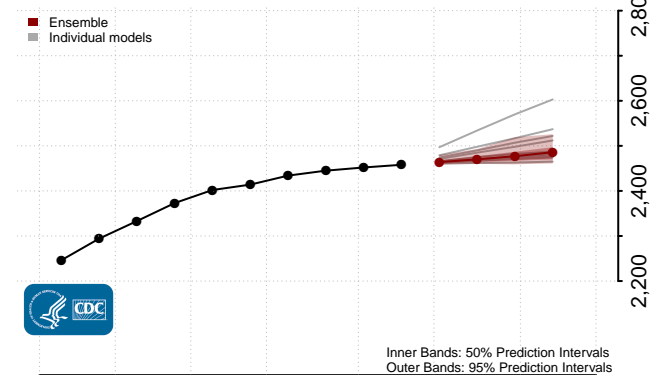
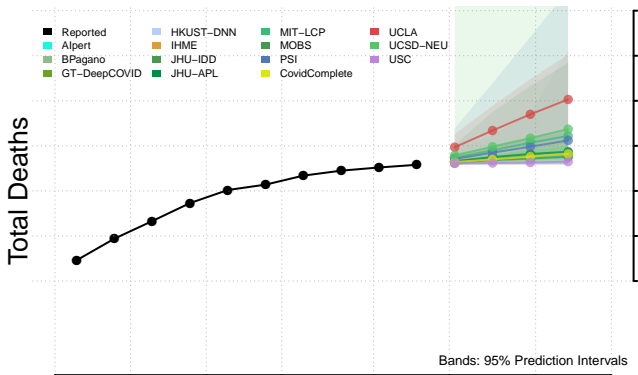
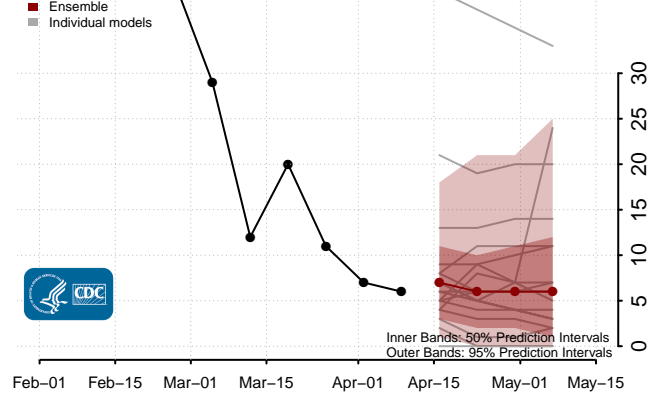
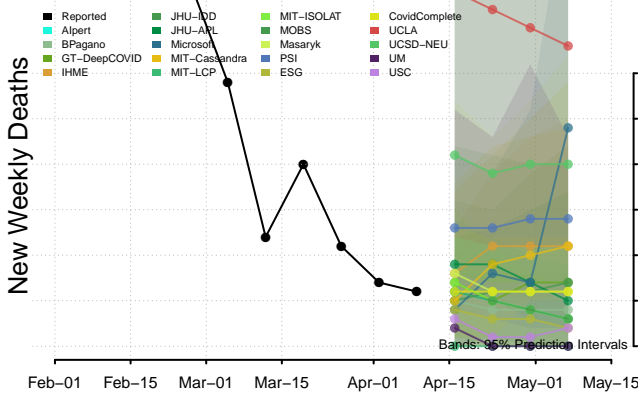


### Nevada

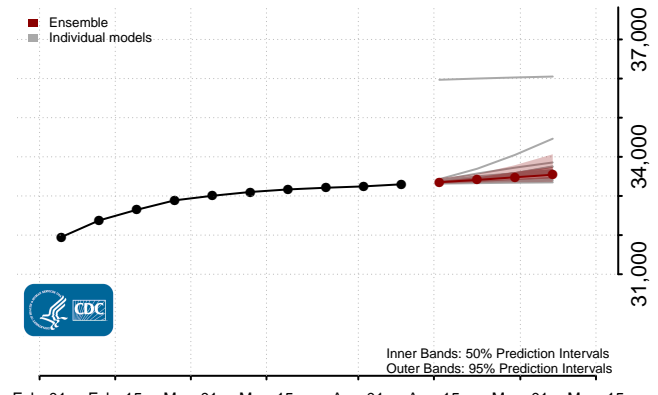
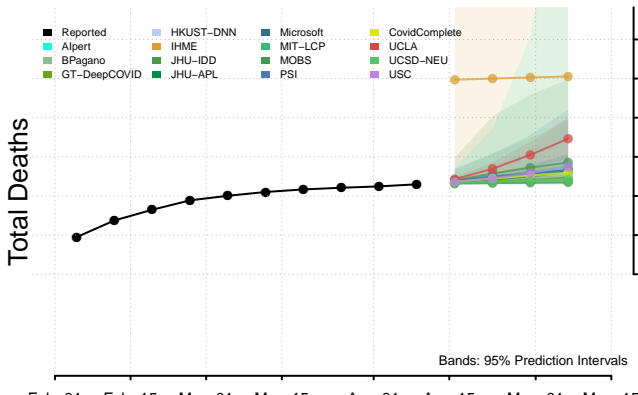
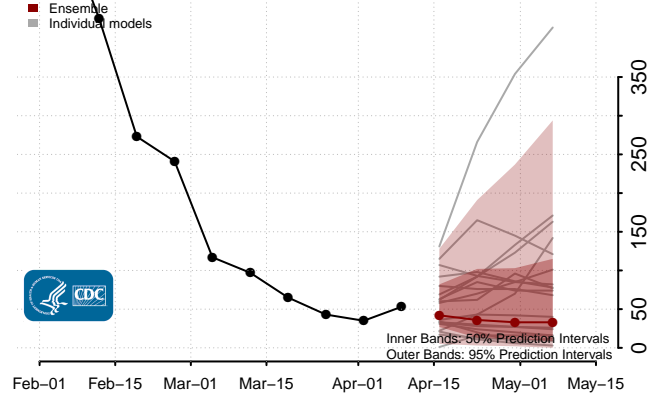
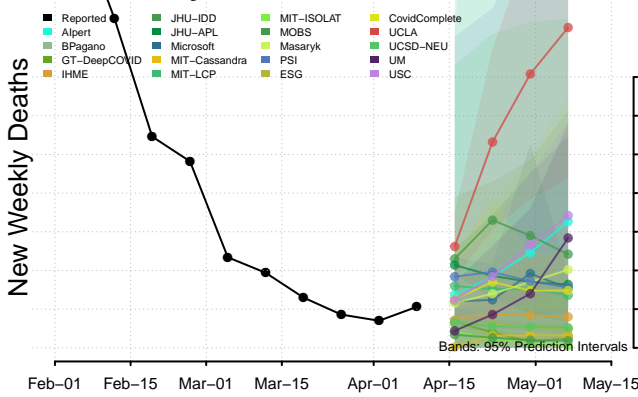




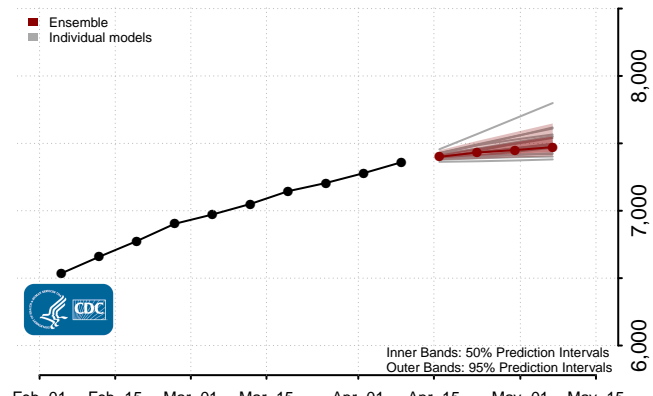
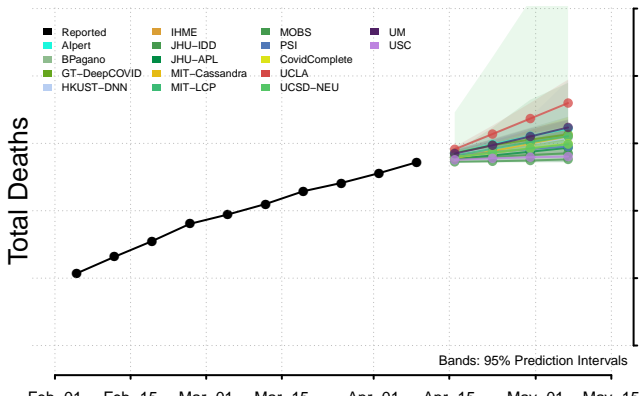
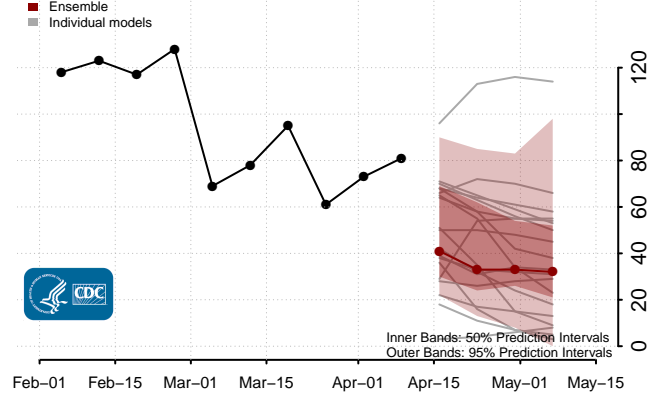
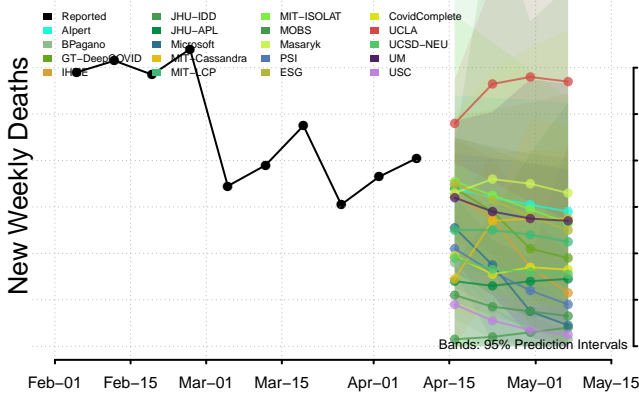
### New Hampshire



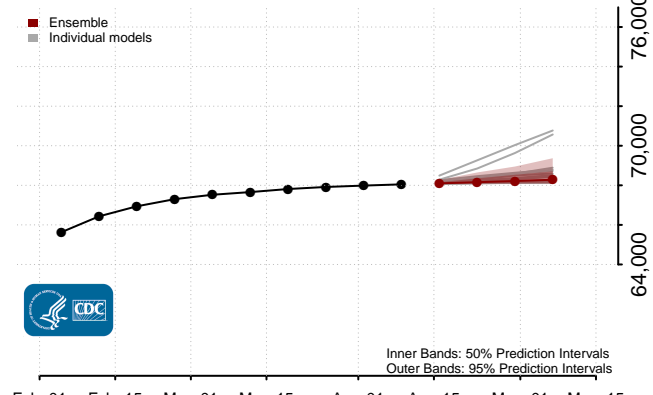
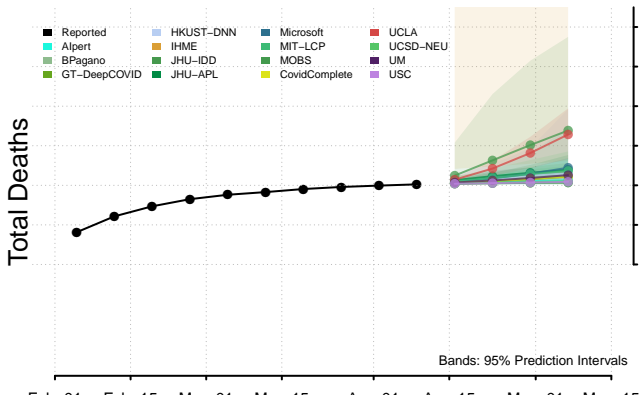
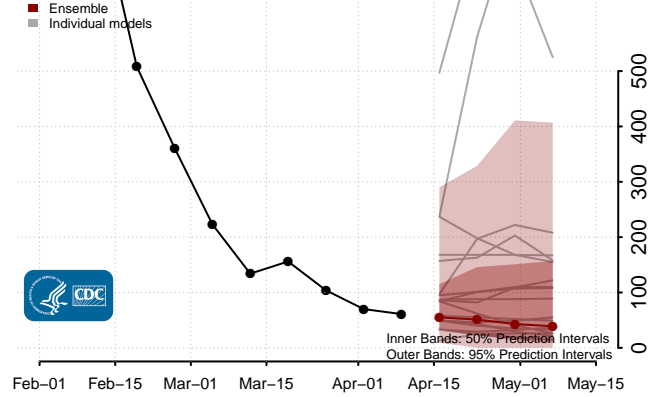
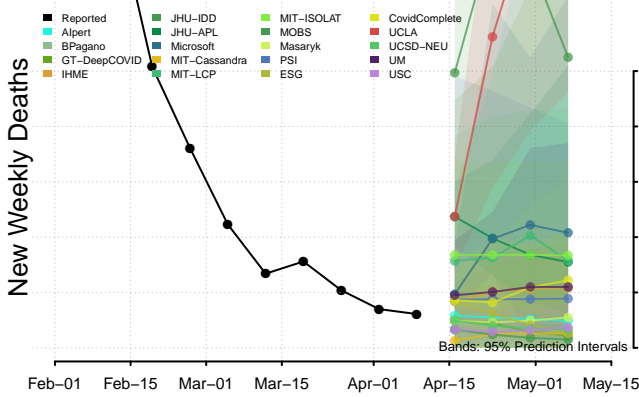
### New Jersey



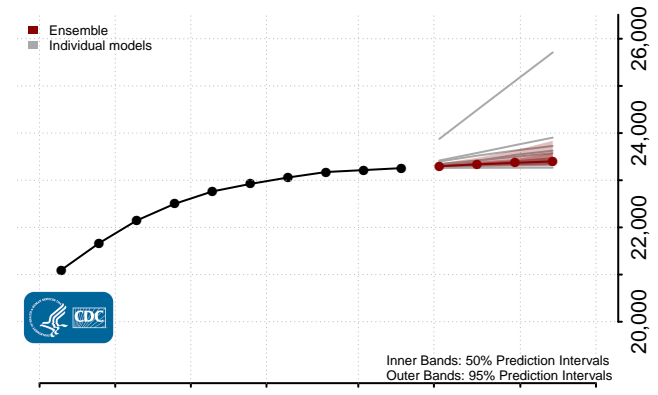
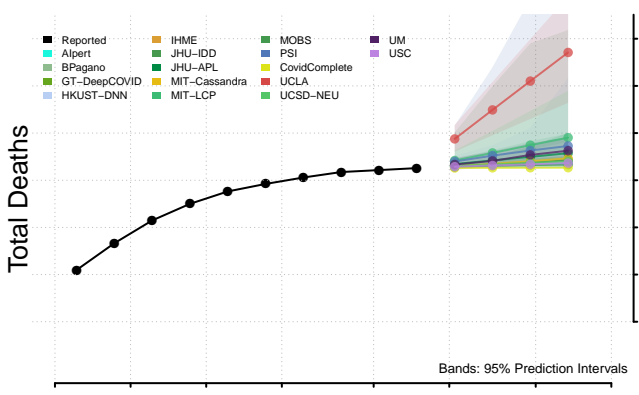
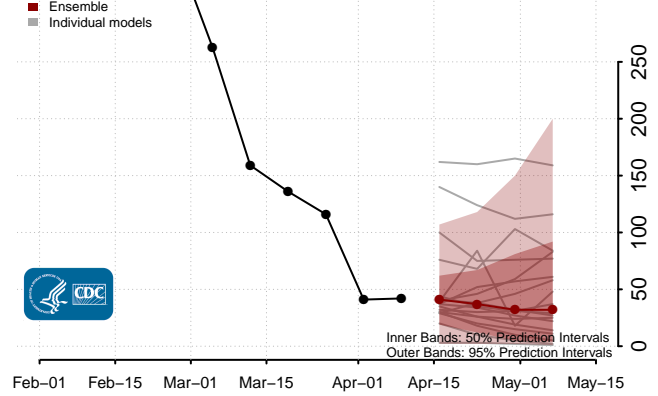
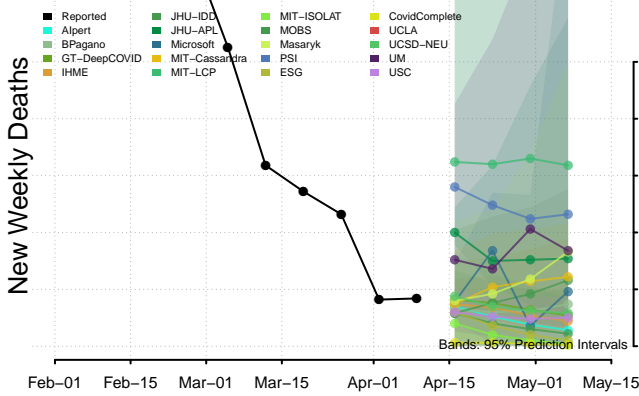
### New Mexico



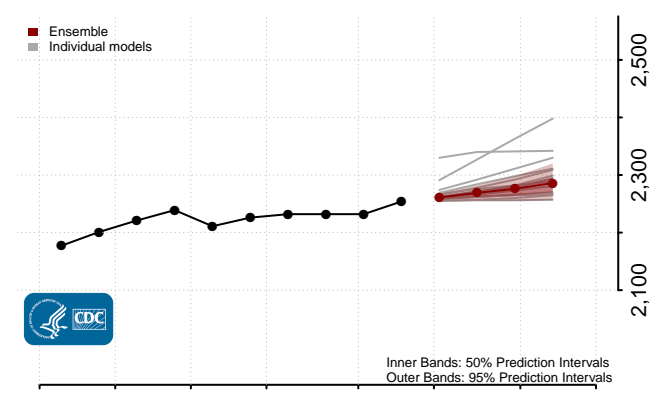
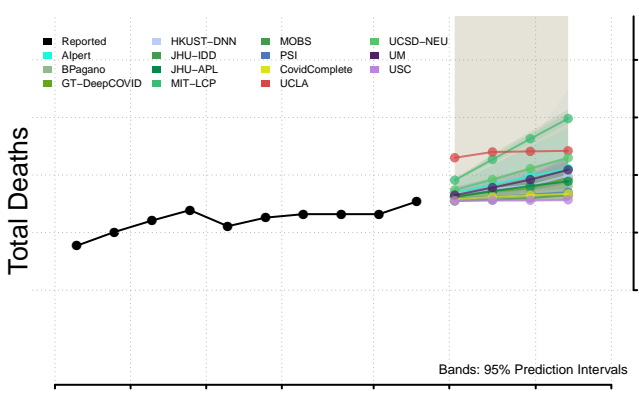
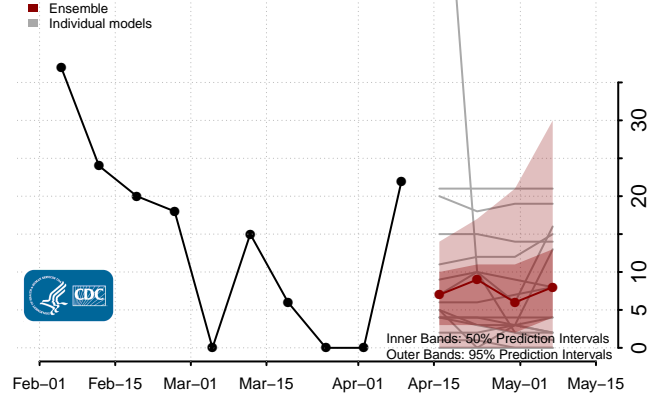
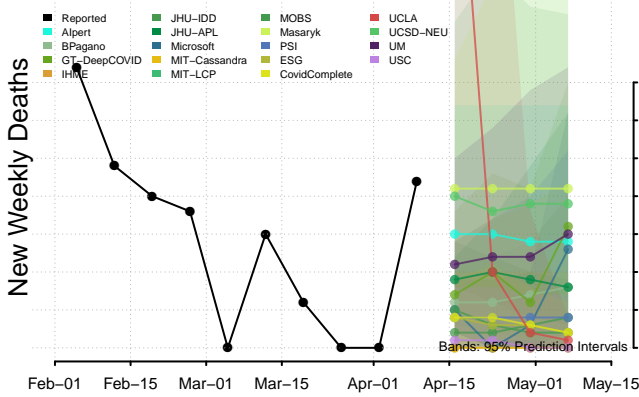
### New York



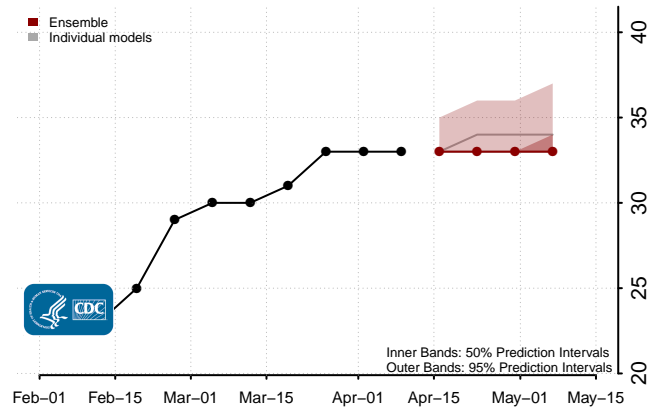
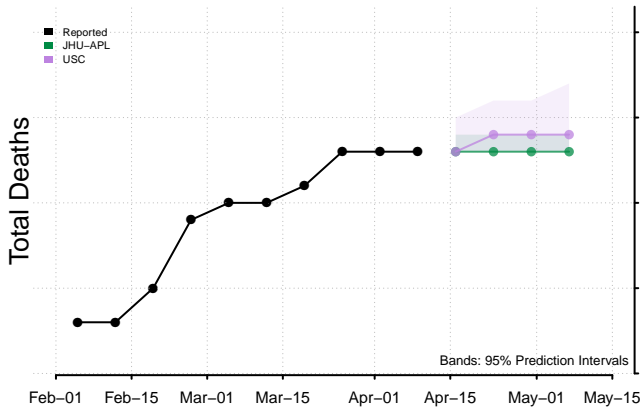
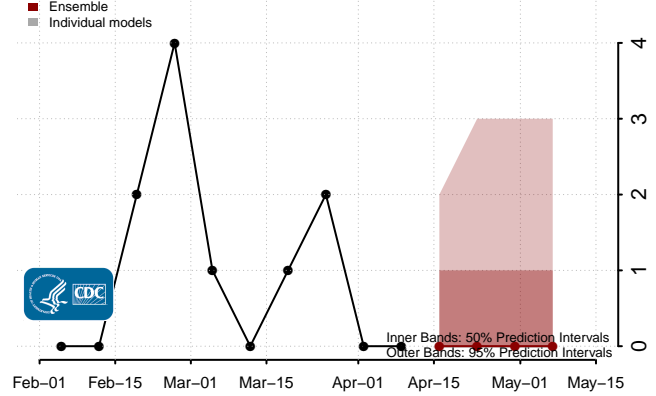
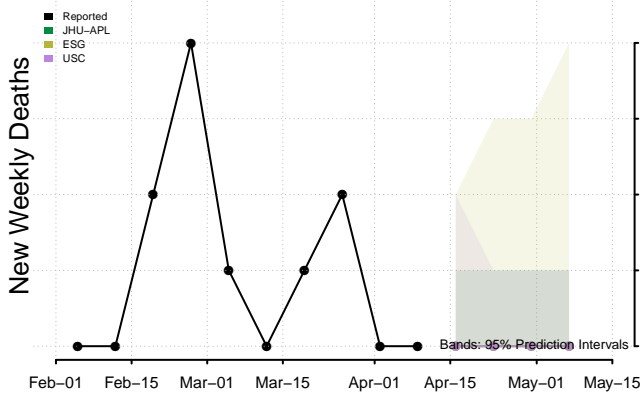
### North Carolina



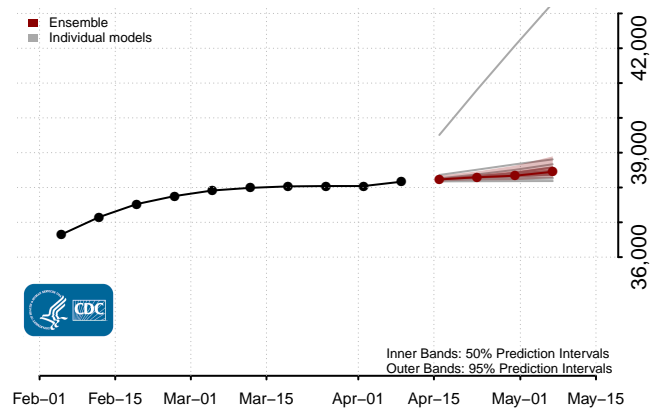
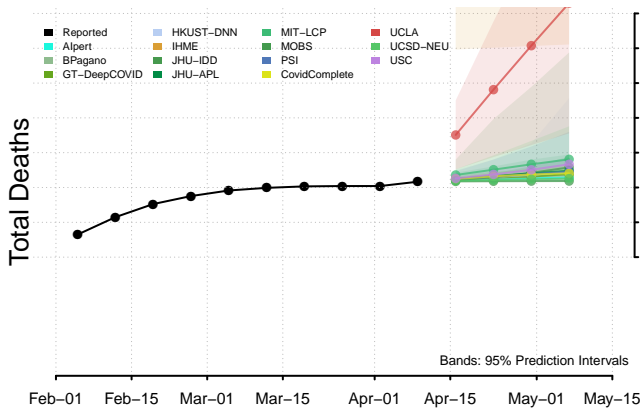
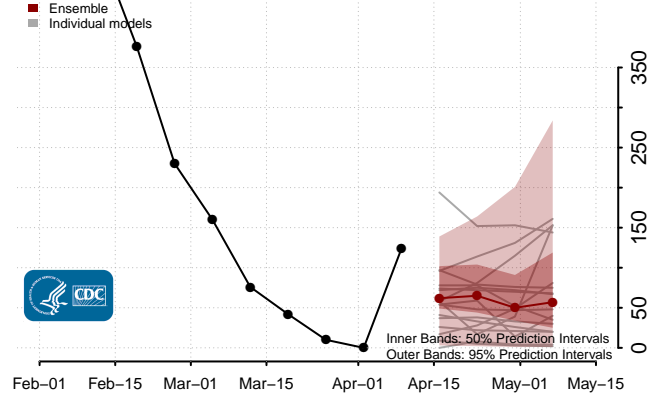
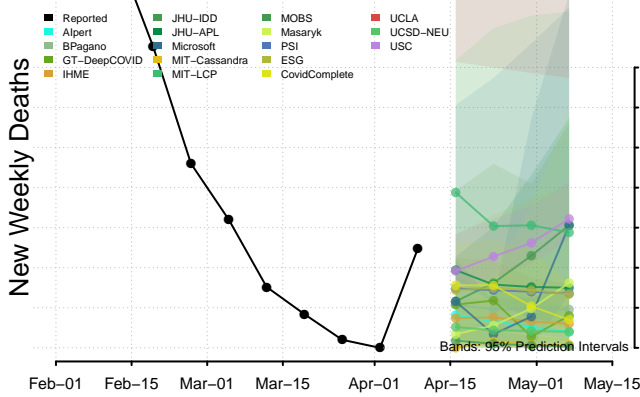
### North Dakota

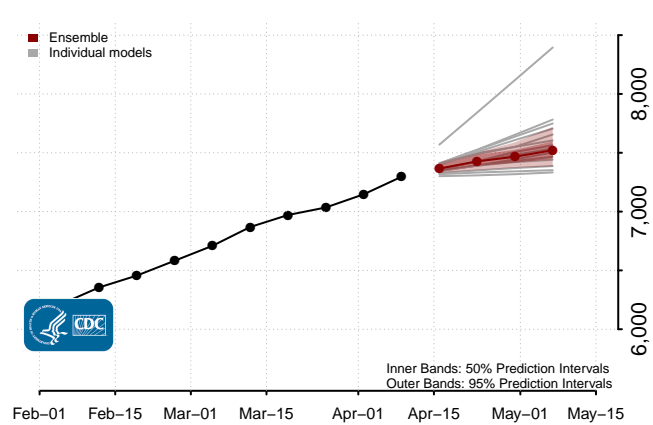
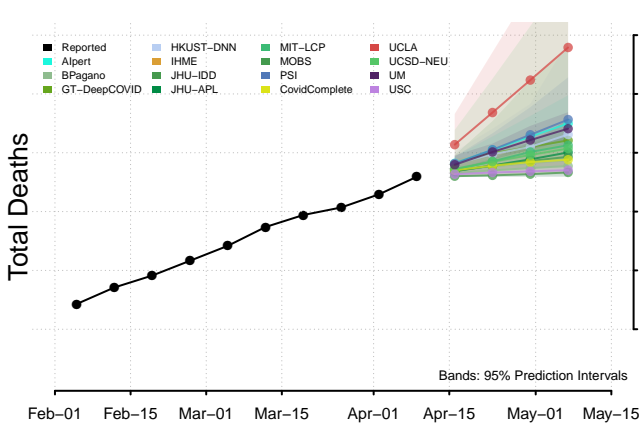
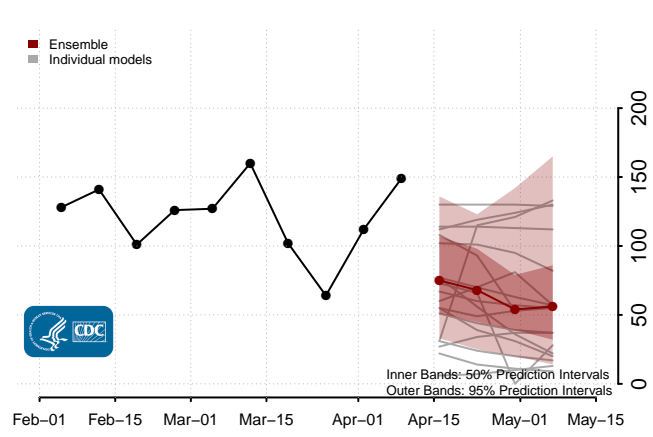
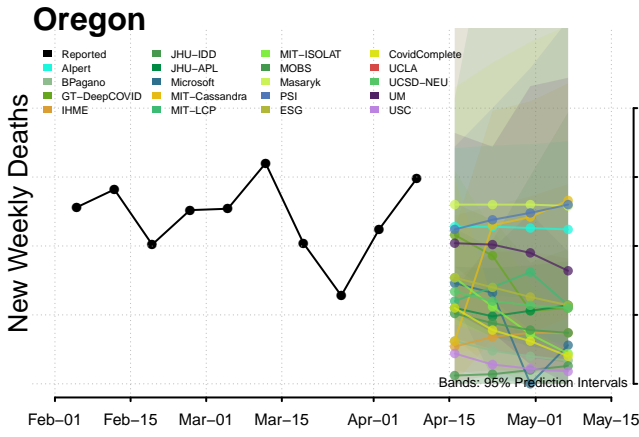
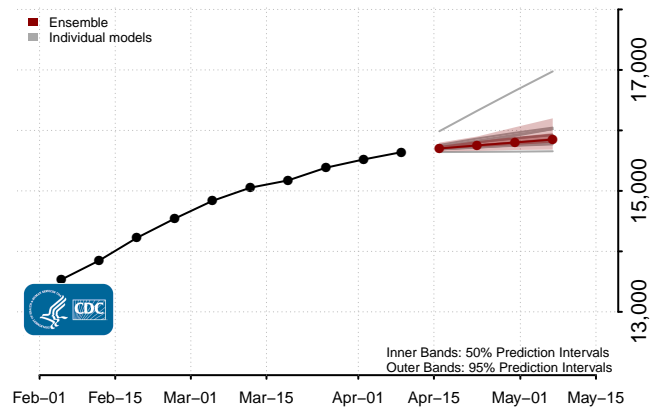
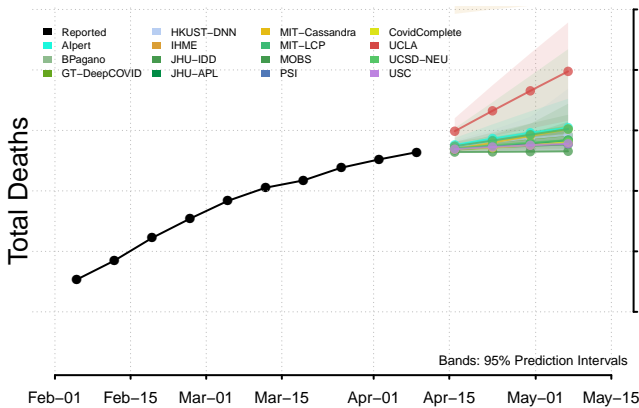
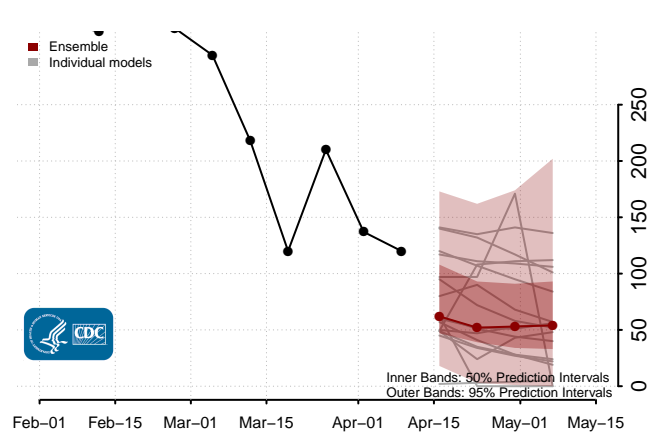
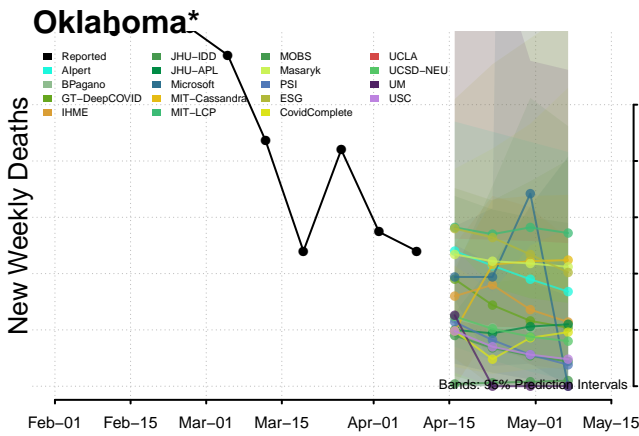


### Northern Mariana Islands



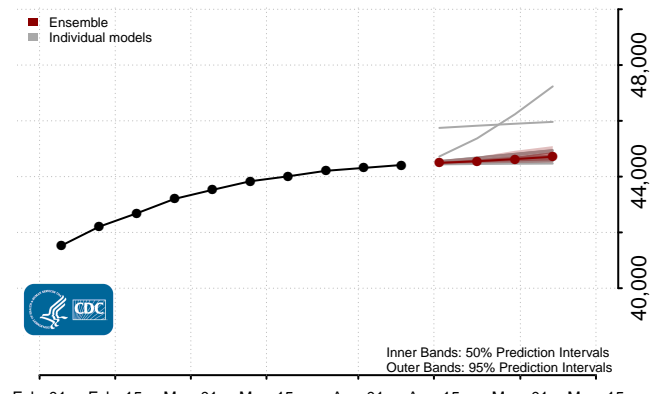
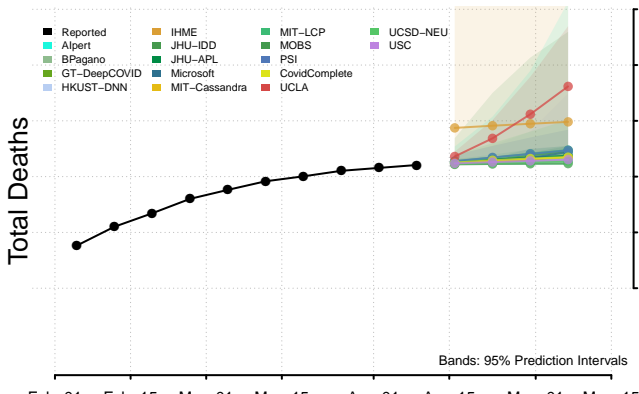
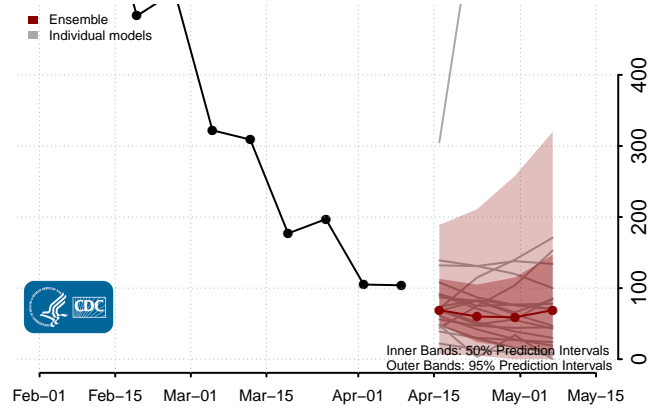
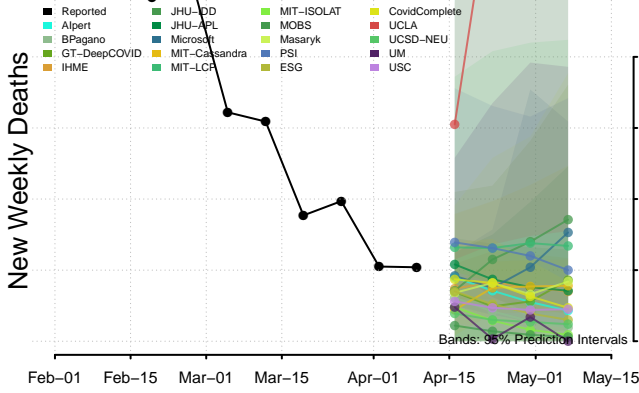
### Ohio



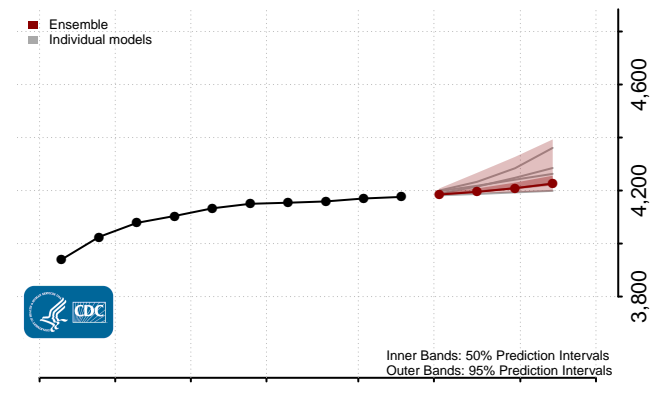
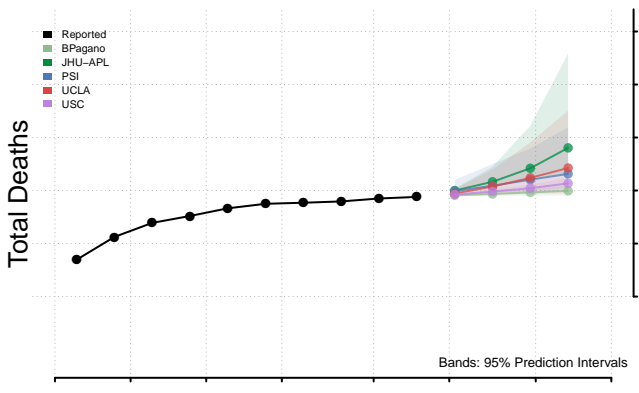
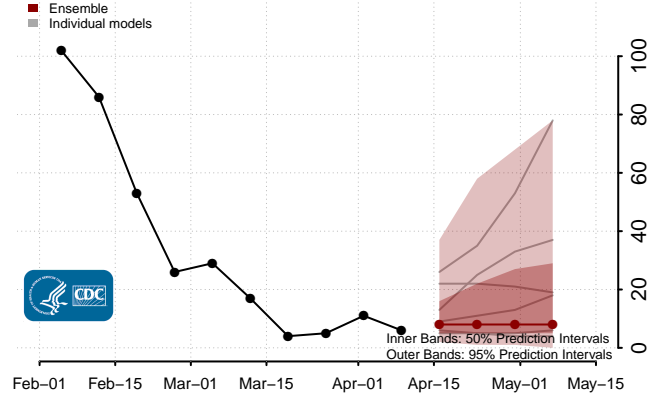
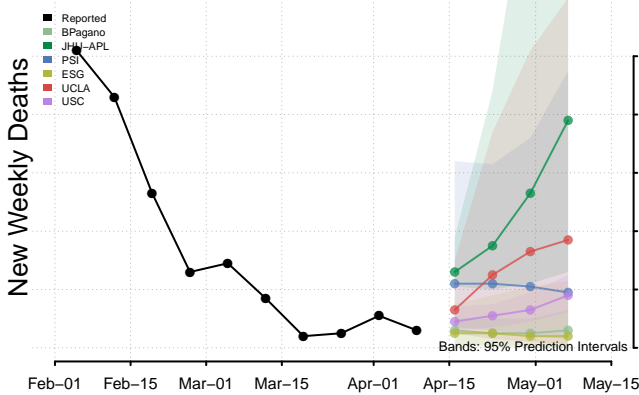


\*New weekly deaths may decrease in this location over the next four weeks. For these locations, the ensemble forecast indicates a probability of 0.75 or greater that fewer deaths will be reported in week four of the forecast than in the last reported week.

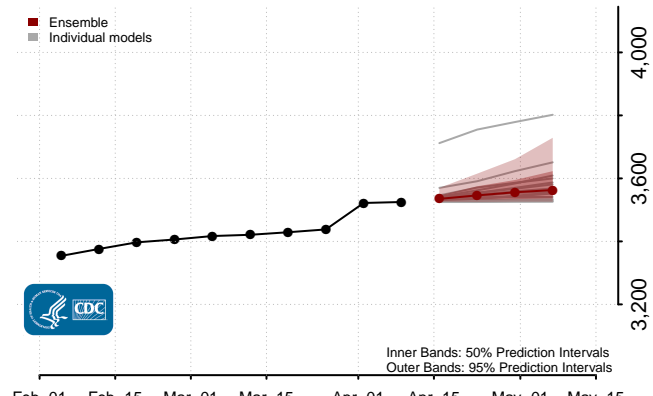
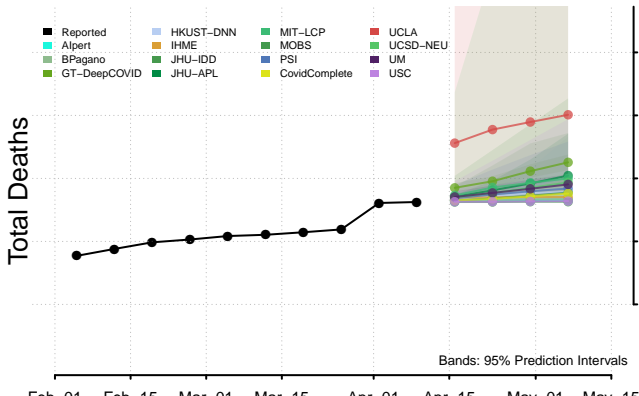
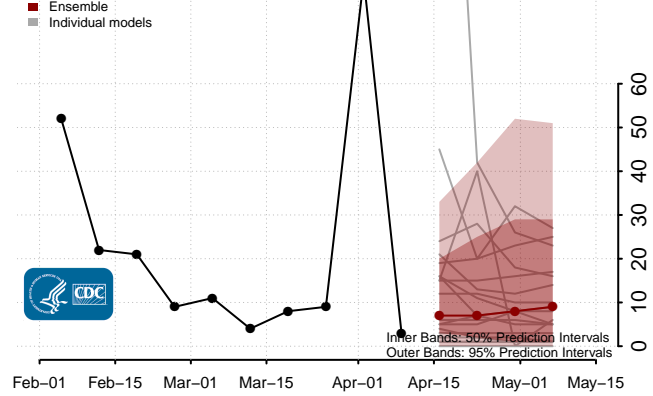
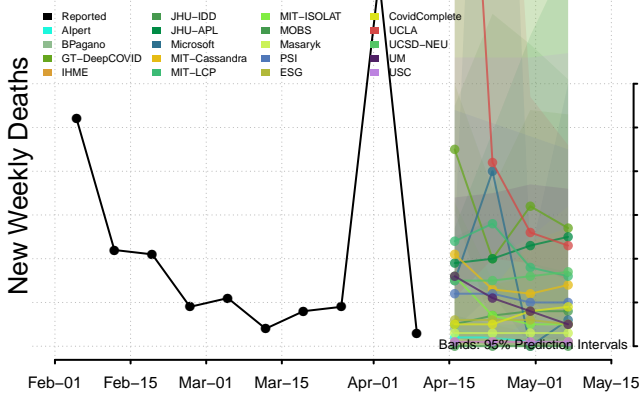
# Pennsylvania



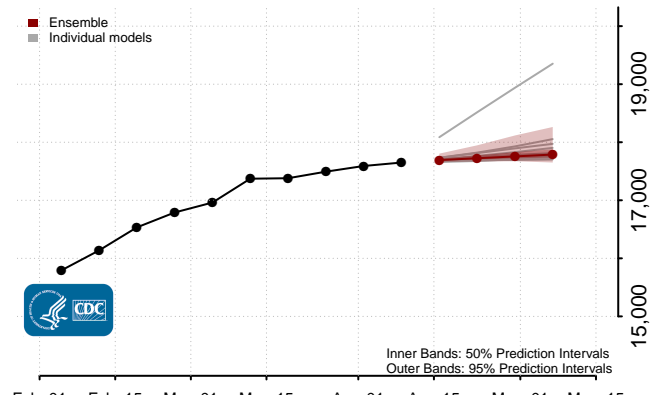
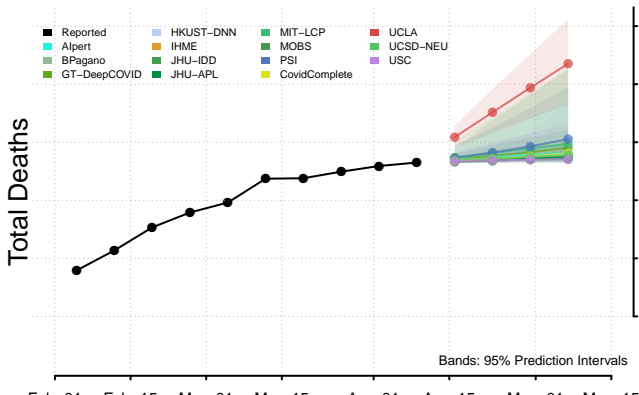
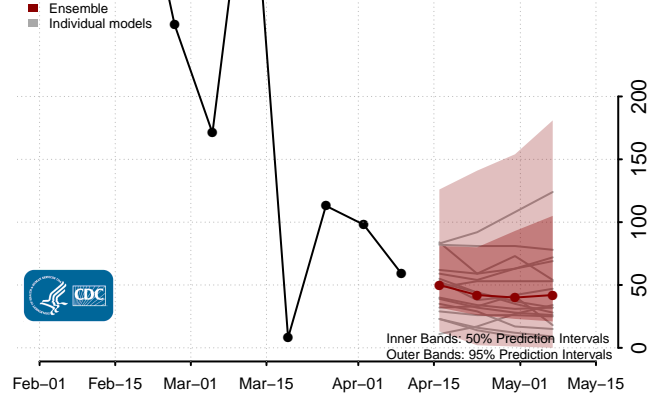
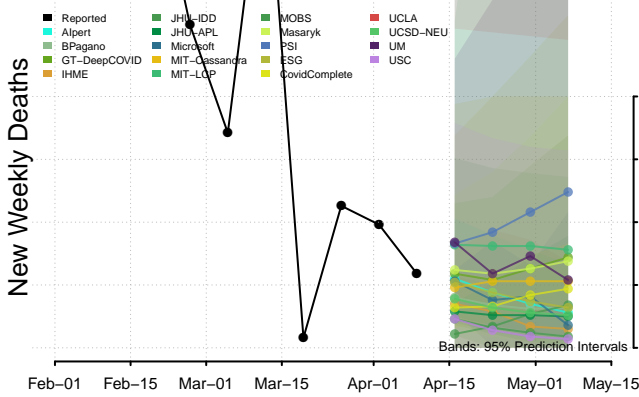
# Puerto Rico



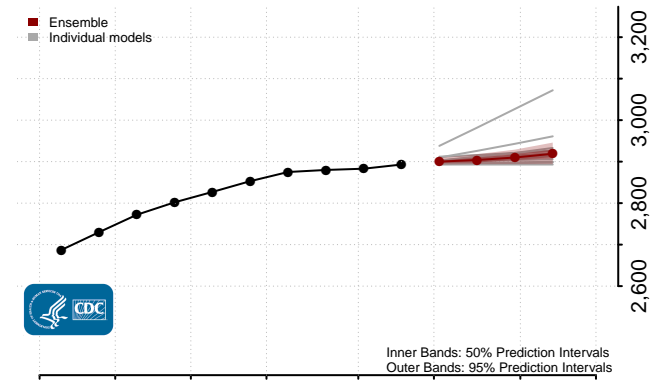
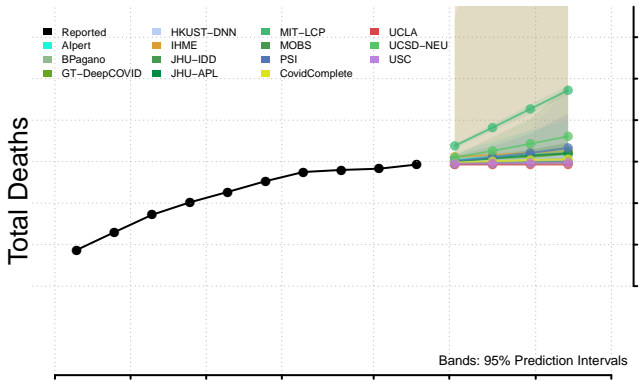
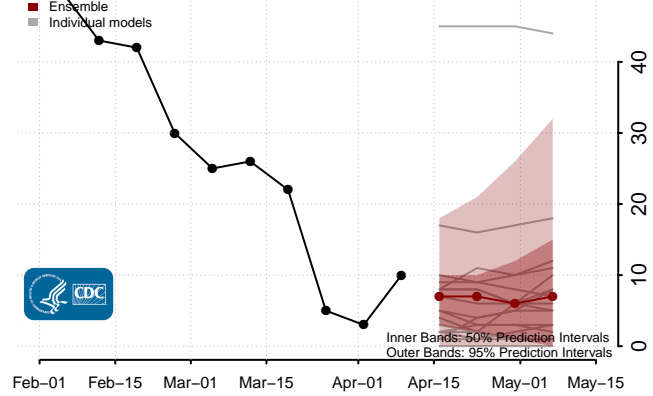
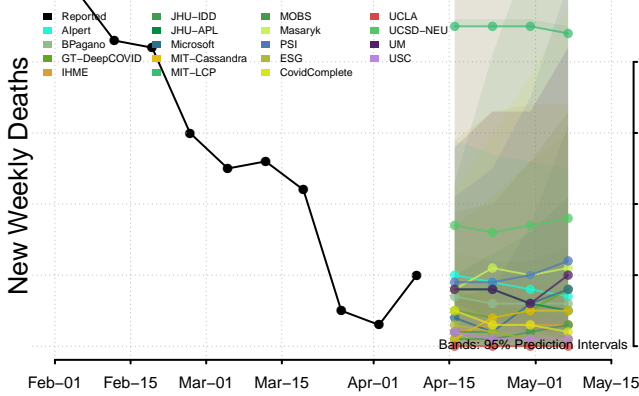
### Rhode Island



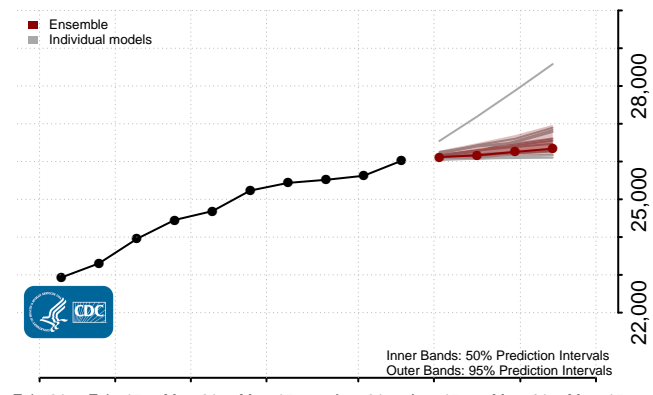
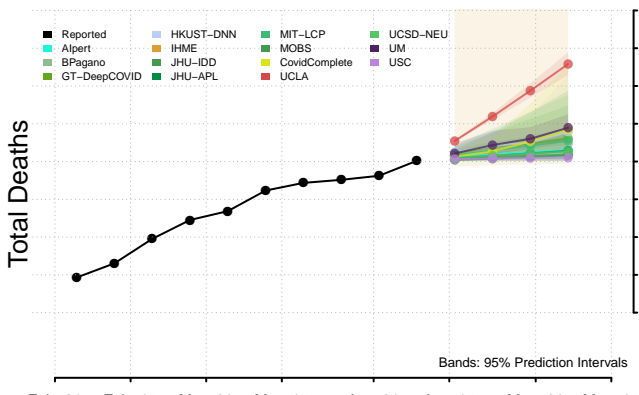
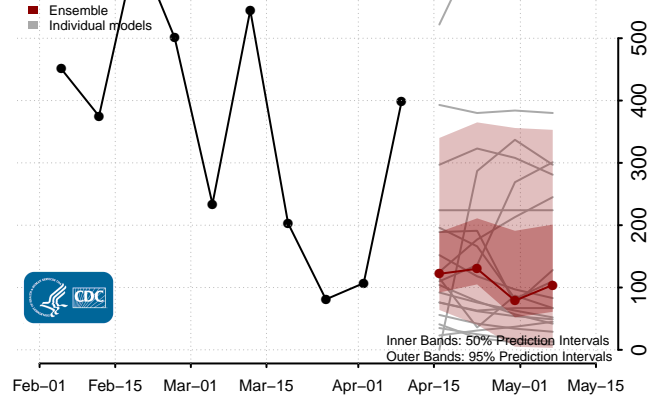
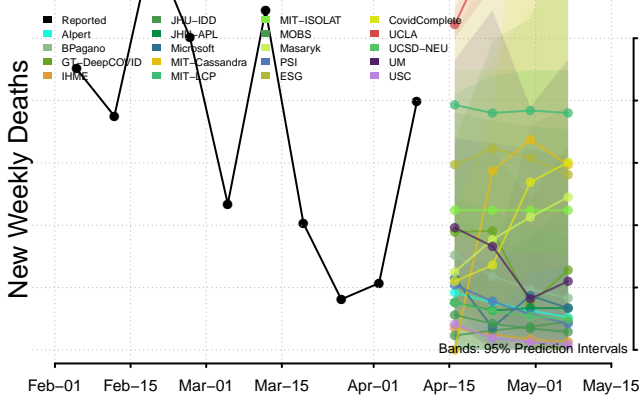
### South Carolina



### South Dakota

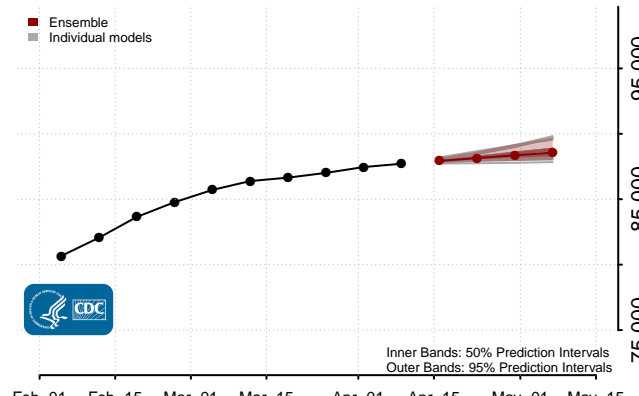
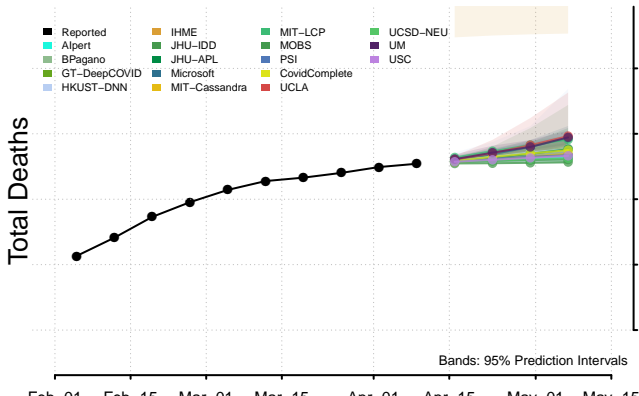
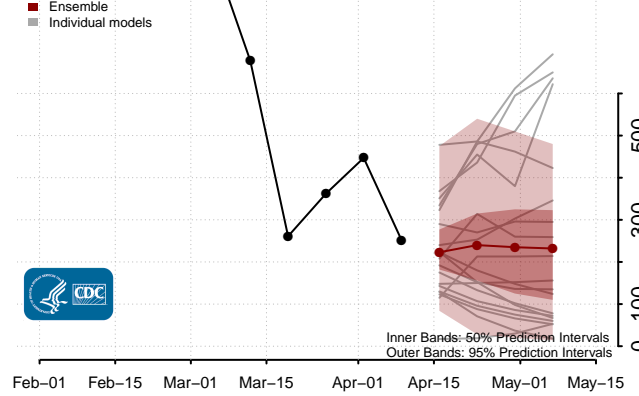
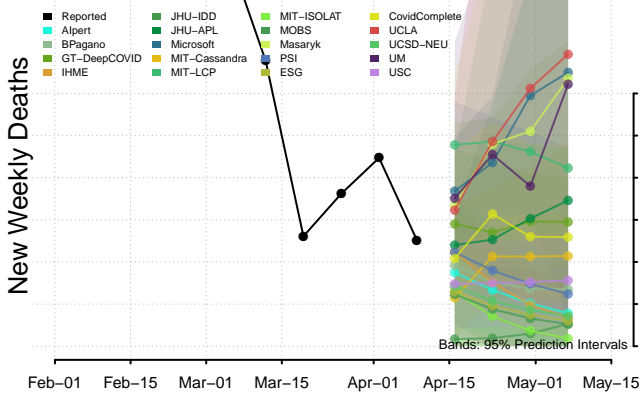


### Tennessee

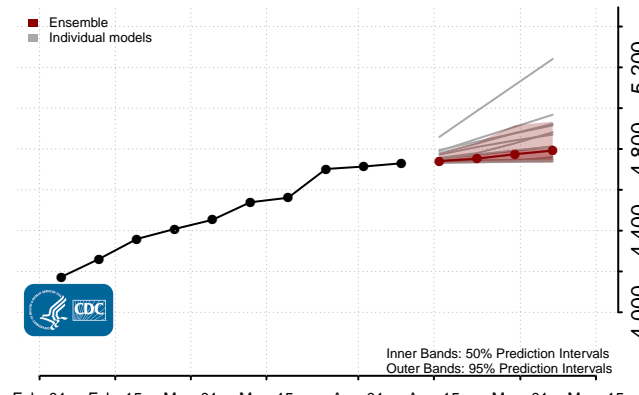
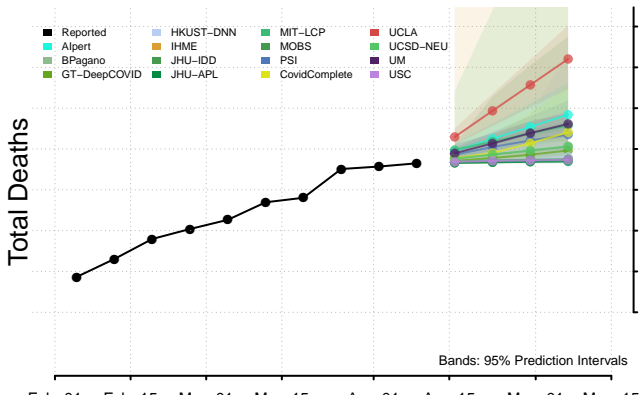
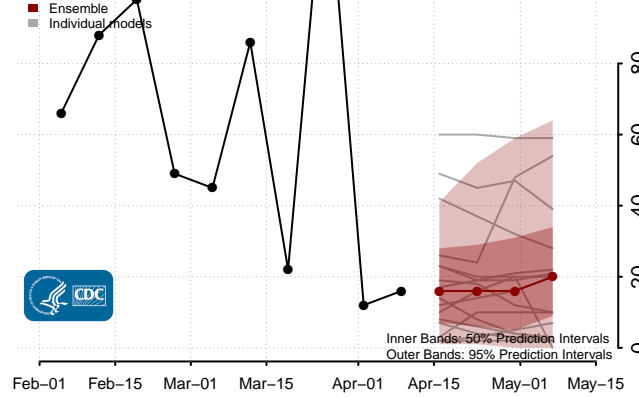
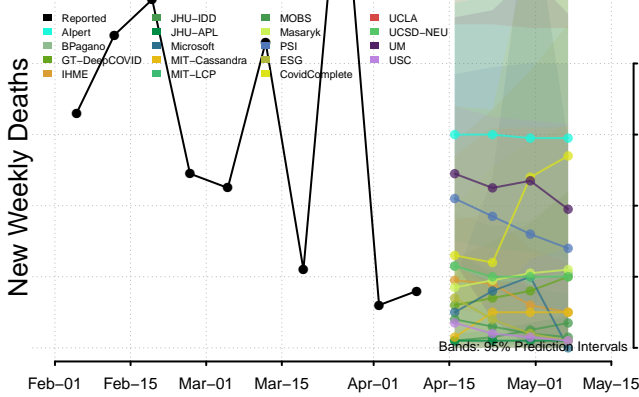




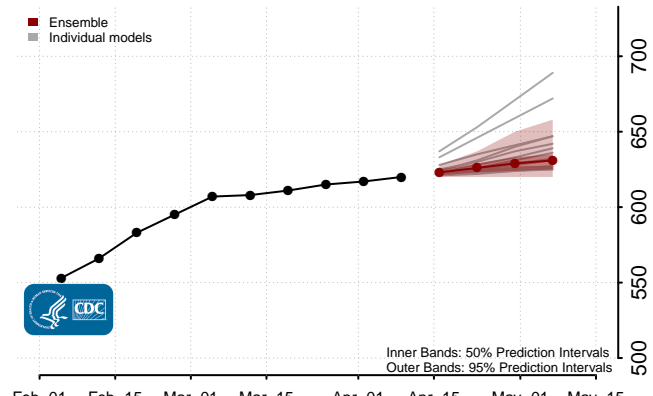
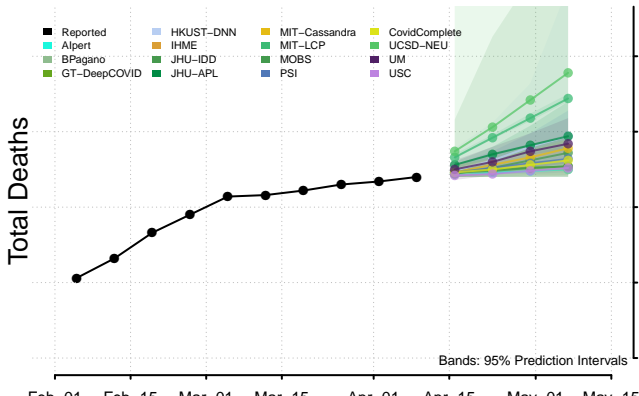
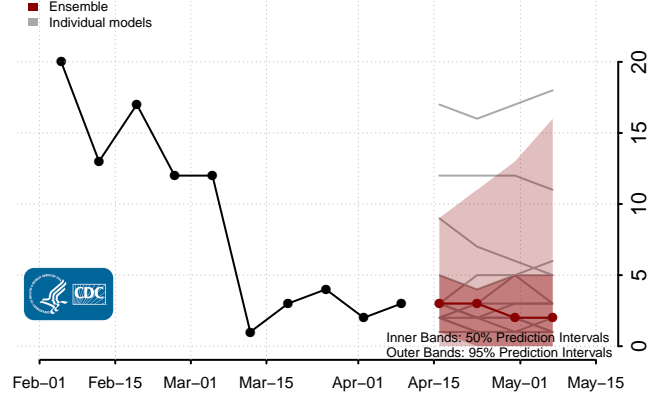
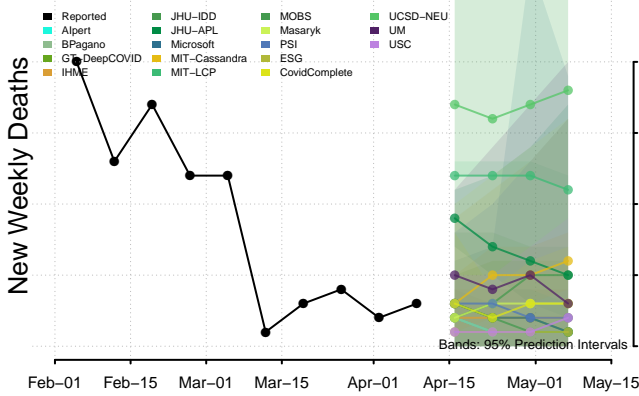
### Texas



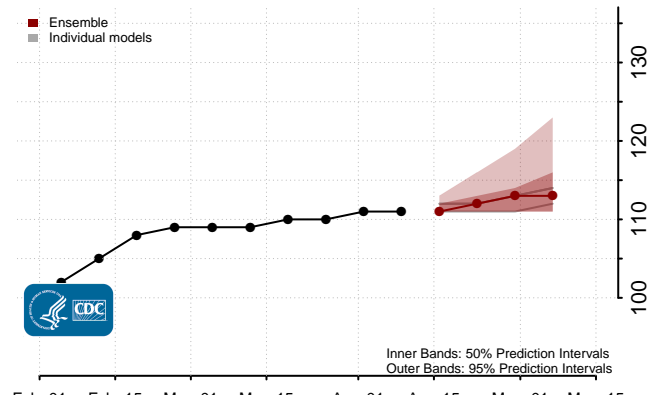
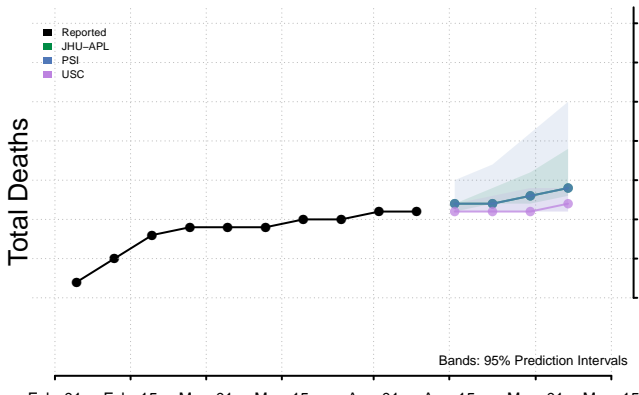
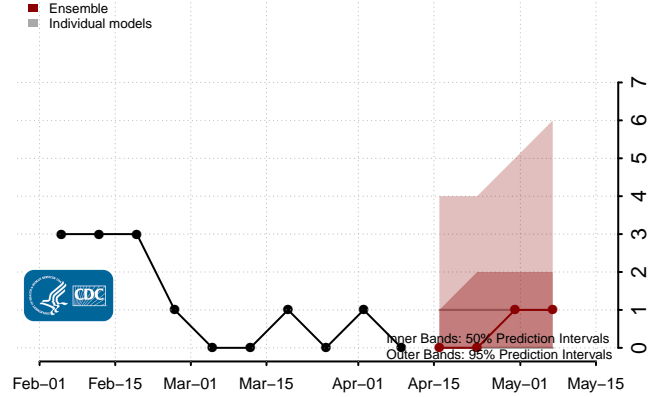
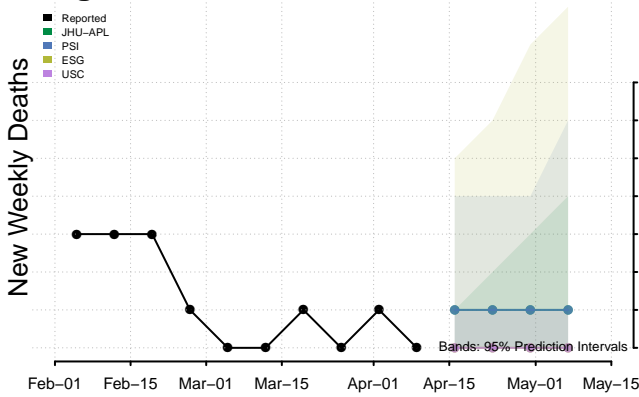
### Utah



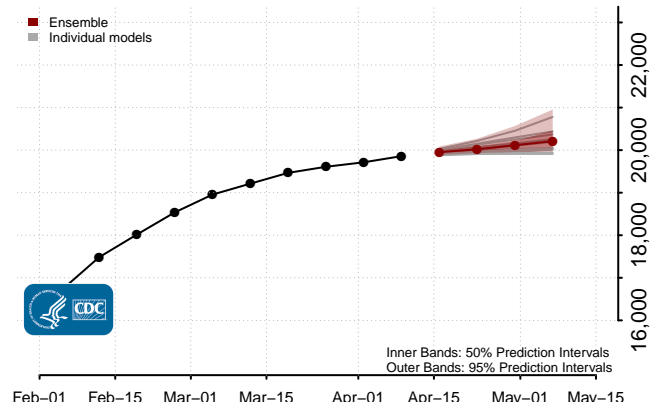
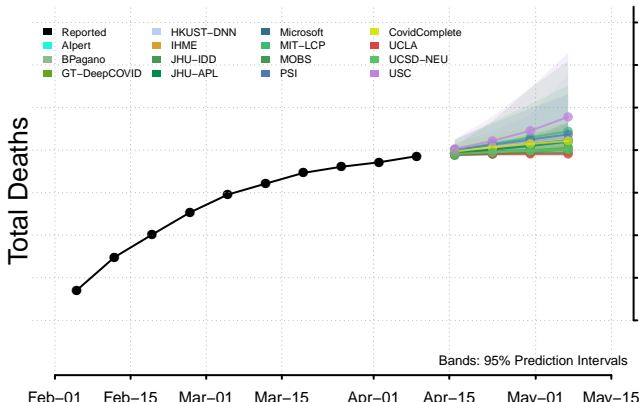
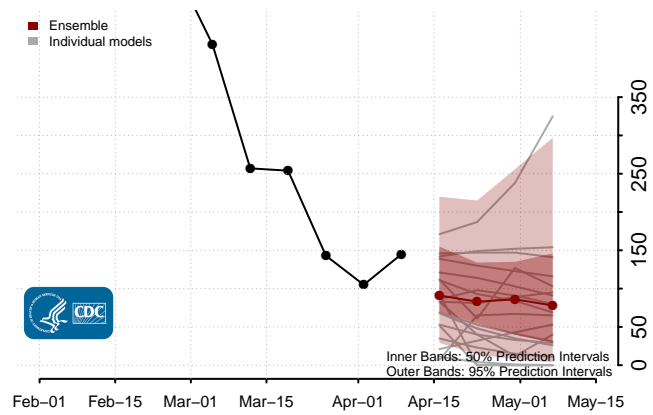
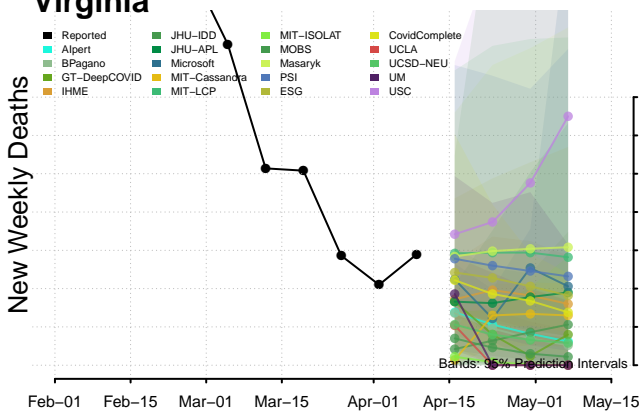
### Vermont



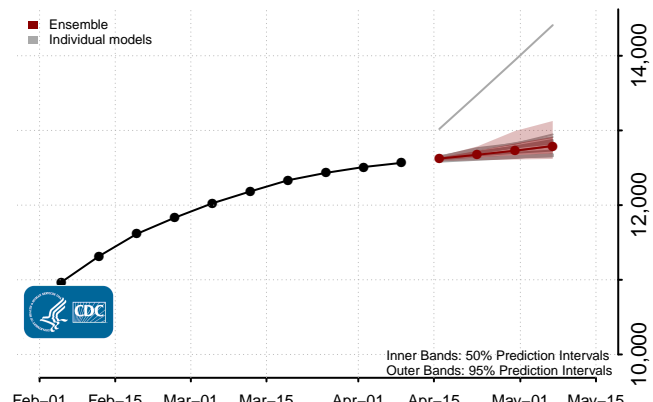
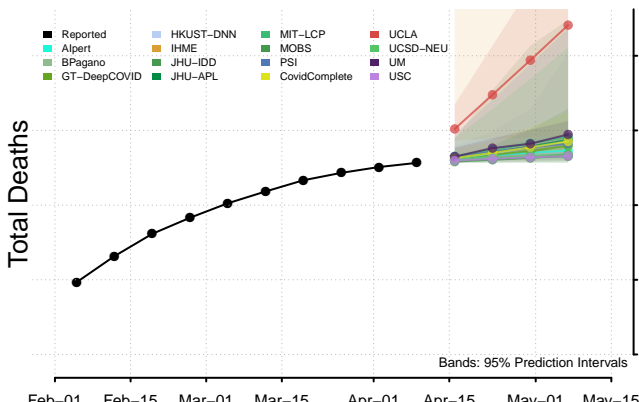
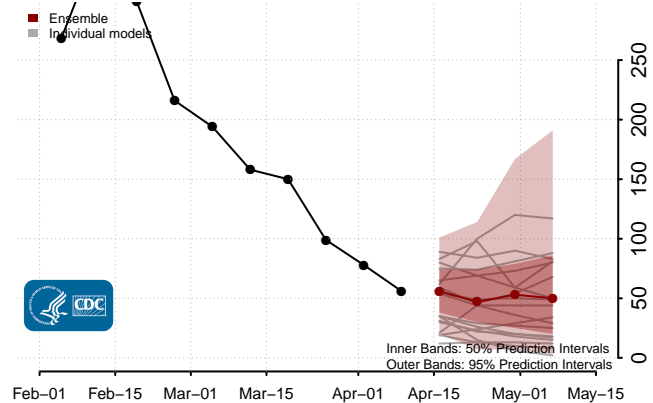
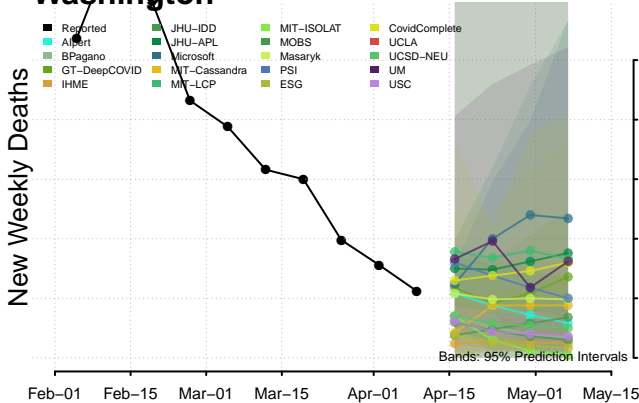
### Virgin Islands



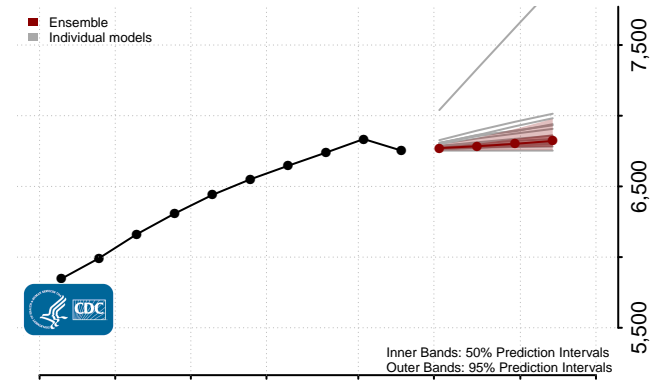
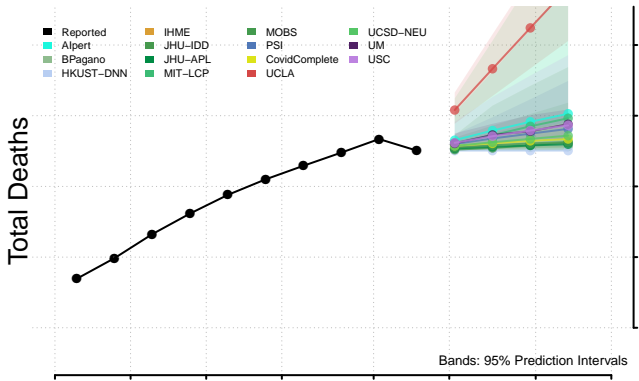
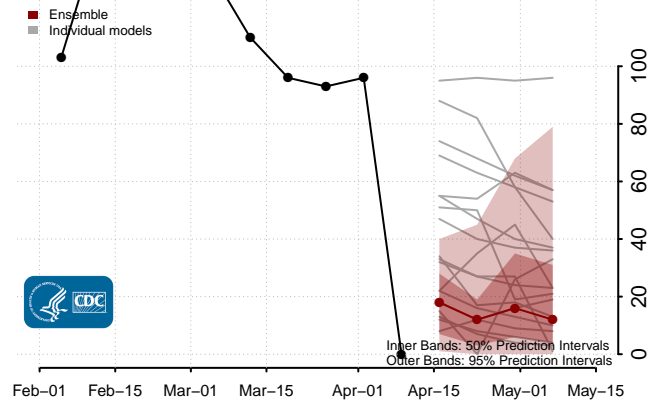
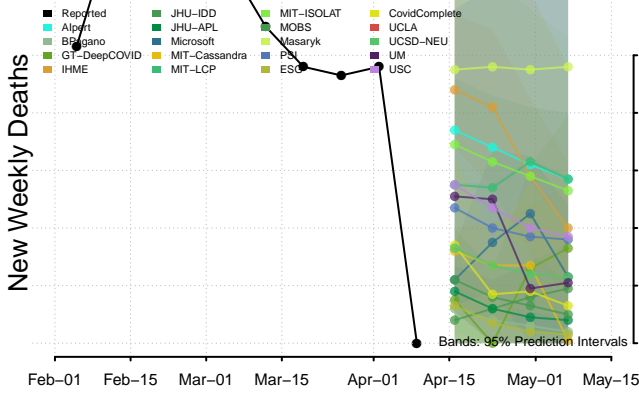
### Virginia



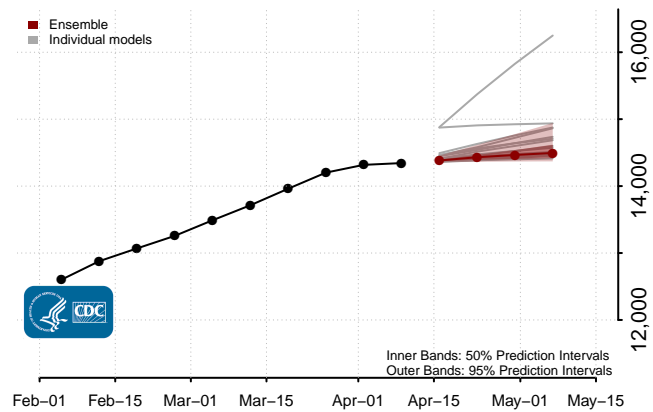
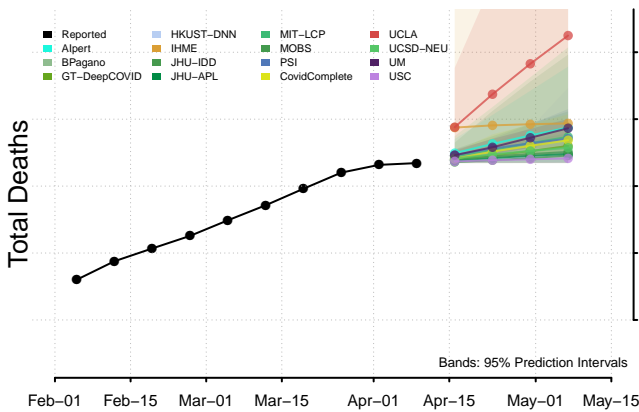
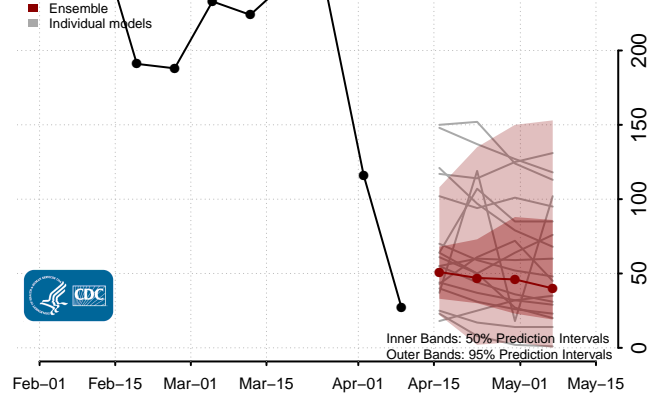
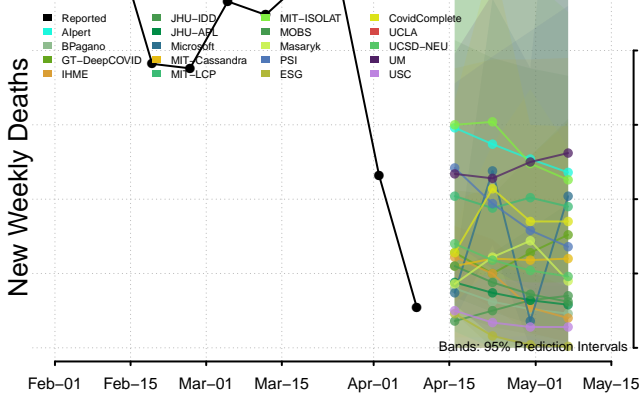
### Washington



### West Virginia



### Wisconsin



# Wyoming

