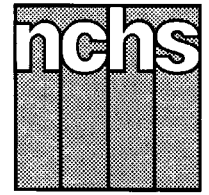


Monthly Vital Statistics Report



Provisional Data From the CENTERS FOR DISEASE CONTROL AND PREVENTION/National Center for Health Statistics

Births, Marriages, Divorces, and Deaths for November 1995

Births

According to provisional reports, an estimated 309,000 births occurred in the United States during November 1995 compared with 313,000 in November 1994. The birth rate, 14.3 live births per 1,000 population, was 1 percent lower than the rate of 14.5 for November 1994. The fertility rate, 63.3 live births per 1,000 women aged 15–44 years, was 1 percent lower than the comparable rate for November 1994 (64.1). The seasonally adjusted fertility rate (65.3) was 1 percent lower than the comparable rate for November 1994 (66.1).

During the first 11 months of 1995, an estimated 3,596,000 births occurred, a 2-percent decline from the 3,665,000

reported for the first 11 months of 1994. The birth rate during this period declined by 3 percent from 15.4 in 1994 to 15.0 in 1995.

An estimated 3,910,000 live births occurred in the 12-month period ending with November 1995, a decline of 2 percent from the 3,989,000 births reported for the same period a year earlier. The birth rate of 14.9 was 3 percent lower than the rate of 15.3 for the preceding 12 months. The fertility rate for the most recent 12-month period was 65.8, 2 percent lower than the rate for the 12 months ending with November 1994 (67.2). These lower rates continue the generally downward trend observed since early 1991.

Natural increase

As a result of natural increase, the excess of births over deaths, an estimated 122,000 people, or 5.7 persons per 1,000 population, were added to the population during November 1995.

For the 12-month period ending with November 1995, 1,609,000 persons were added to the population. This represented a rate of natural increase of 6.1, 6 percent lower than the rate of 6.5 for the preceding 12-month period. The decline in the rate of natural increase was due to a decrease in the birth rate and an unchanged death rate.

Provisional Vital Statistics for the United States

[Rates for infant deaths are deaths under 1 year per 1,000 live births; fertility rates are live births per 1,000 women aged 15–44 years; all other rates are per 1,000 total population. Data are subject to monthly reporting variation; see Technical notes]

Item	November				January–November				12 months ending with November				
	Number		Rate		Number		Rate		Number		Rate		
	1995	1994	1995	1994	1995	1994	1995	1994	1995	1994	1995	1994	1993
Live births	309,000	313,000	14.3	14.5	3,596,000	3,665,000	15.0	15.4	3,910,000	3,989,000	14.9	15.3	15.7
Fertility rate	63.3	64.1	66.1	67.5	65.8	67.2	68.4
Deaths	187,000	182,000	8.6	8.5	2,112,000	2,096,000	8.8	8.8	2,301,000	2,298,000	8.8	8.8	8.7
Infant deaths	2,300	2,500	7.4	7.8	26,900	28,900	7.5	7.9	29,400	31,700	7.5	8.0	8.3
Natural increase	122,000	131,000	5.7	6.0	1,484,000	1,569,000	6.2	6.6	1,609,000	1,691,000	6.1	6.5	7.0
Marriages	176,000	171,000	8.1	7.9	2,170,000	2,189,000	9.1	9.2	2,343,000	2,374,000	8.9	9.1	9.1
Divorces	95,000	98,000	4.4	4.5	1,077,000	1,088,000	4.5	4.6	1,180,000	1,184,000	4.5	4.5	4.6
Population base (in millions)	263.6	261.6	262.6	260.4	257.7

... Category not applicable.

NOTES: Figures include revisions received from the States. Twelve-month figures for the current year reflect revisions received for previous months, and figures for earlier years may differ from those previously published.



U.S. DEPARTMENT OF HEALTH AND HUMAN SERVICES
Public Health Service
Centers for Disease Control and Prevention
National Center for Health Statistics



Marriages

Approximately 176,000 couples married in November 1995, a 3-percent increase compared with November 1994 (171,000). The marriage rate for November (per 1,000 population) was also 3 percent higher in 1995 (8.1) than in 1994 (7.9).

Despite the increases for the month of November, the number and rate of marriages for January–November 1995 were 1 percent lower than the comparable figures for 1994. The number of marriages for the period was 2,189,000 in 1994 compared with 2,170,000 in 1995; the marriage rate declined from 9.2 to 9.1.

For the 12-month period ending with November 1995, an estimated 2,343,000 marriages occurred, 1 percent fewer than for the comparable period ending with November 1994 (2,374,000). The marriage rate for the current 12-month period (8.9) was 2 percent lower than the rate for the same period a year earlier (9.1).

Divorces

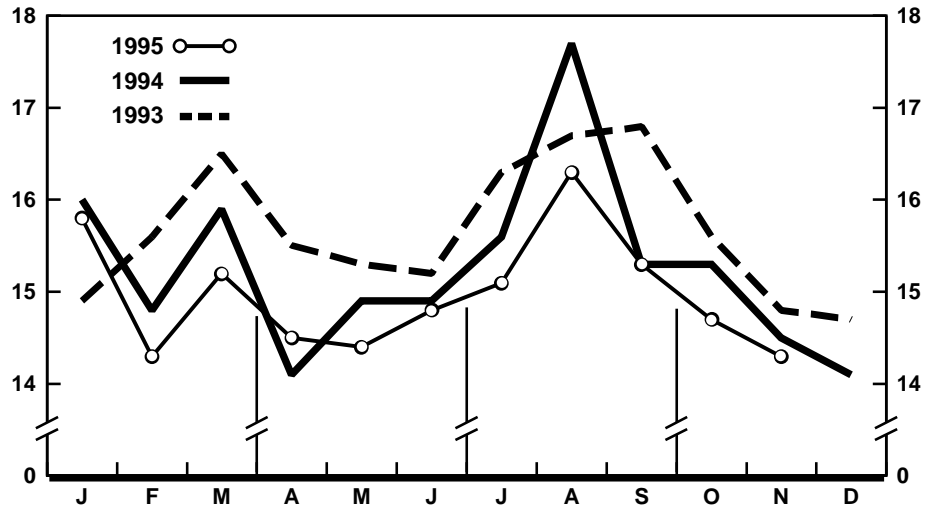
The provisional number of divorces for November 1995 was 95,000, 3 percent fewer than for November a year earlier (98,000). The divorce rate per 1,000 population for November was 2 percent lower in 1995 (4.4) than in 1994 (4.5).

Divorces granted during January–November 1995 totaled 1,077,000, a 1-percent decline compared with the same period in 1994 (1,088,000). The divorce rate for the 11-month period was 4.5 in 1995, 2 percent lower than in 1994 (4.6).

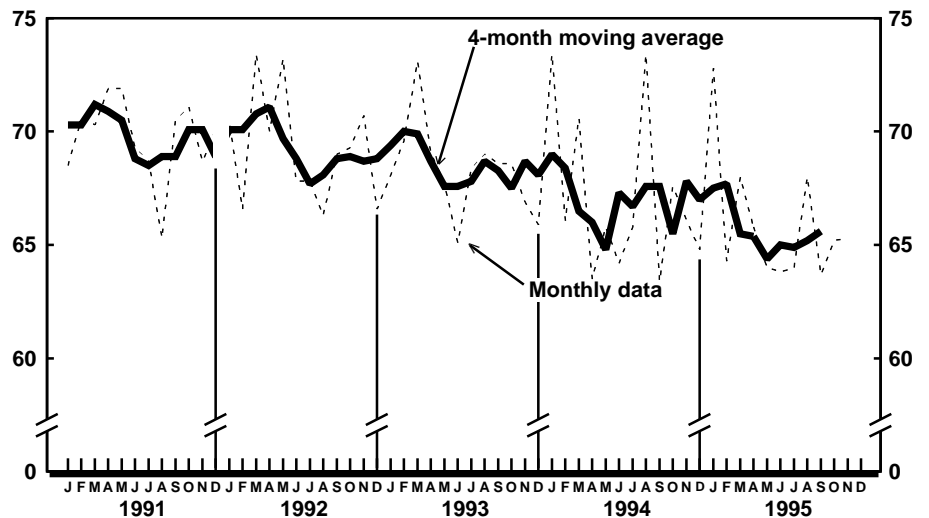
The number and rate of divorces for the 12-month period ending with November 1995 were essentially unchanged from the figures for the comparable period a year earlier. The number of divorces for the current 12-month period (1,180,000) was less than 1 percent lower than for the period ending with November 1994 (1,184,000), while the divorce rate was 4.5 for both periods.

Deaths

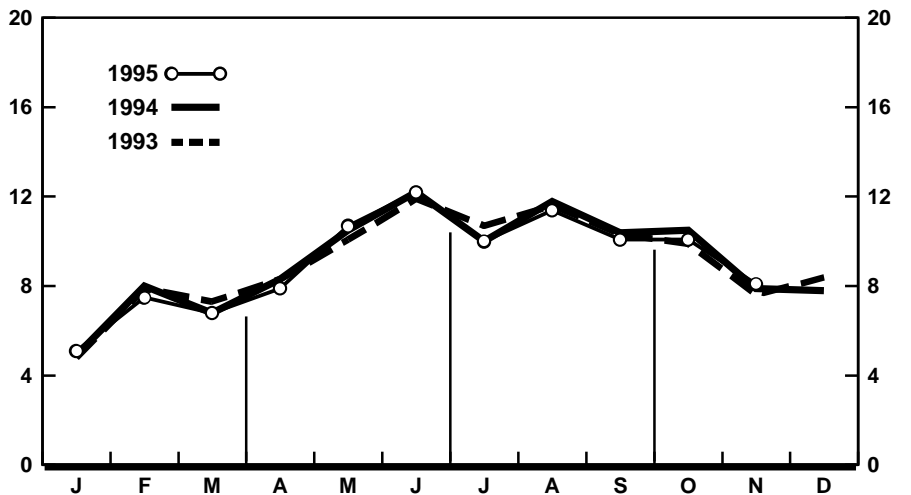
For November 1995 an estimated 187,000 deaths occurred in the United States. The death rate was 8.6 deaths per



Provisional birth rates per 1,000 population by month: United States, 1993–95



Provisional seasonally adjusted fertility rates per 1,000 women aged 15–44 years: United States, 1991–95



Provisional marriage rates per 1,000 population by month: United States, 1993–95

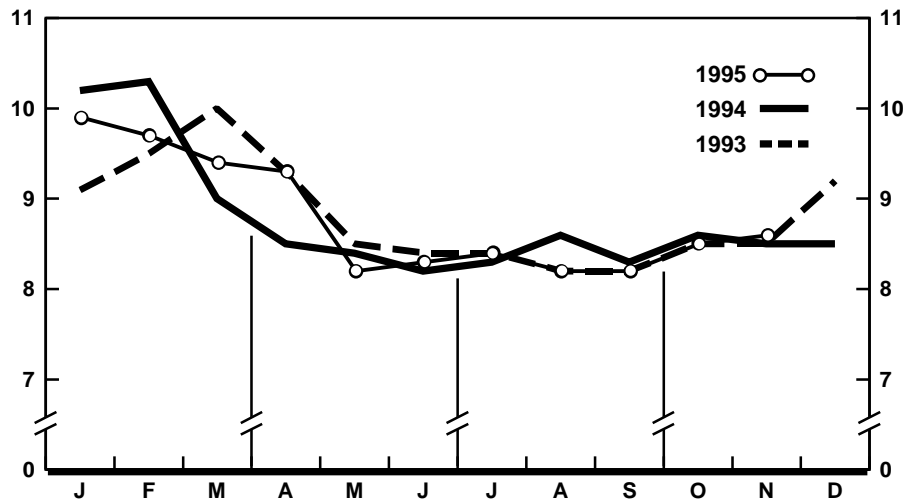
1,000 population, 1 percent higher than the rate of 8.5 for November a year earlier. Among the 187,000 deaths for November 1995 were 2,300 deaths at ages under 1 year.

According to provisional statistics, 2,112,000 deaths occurred during the first 11 months of 1995, 1 percent higher than the number estimated for January–November 1994 (2,096,000). The death rate, 8.8 per 1,000 population, was the same as the rate for January–November 1994. Among the 2,112,000 deaths for January–November 1995 were 26,900 deaths at ages under 1 year, yielding an infant mortality rate of 7.5 per 1,000 live births. This rate was 5 percent lower than the rate of 7.9 for the first 11 months of 1994.

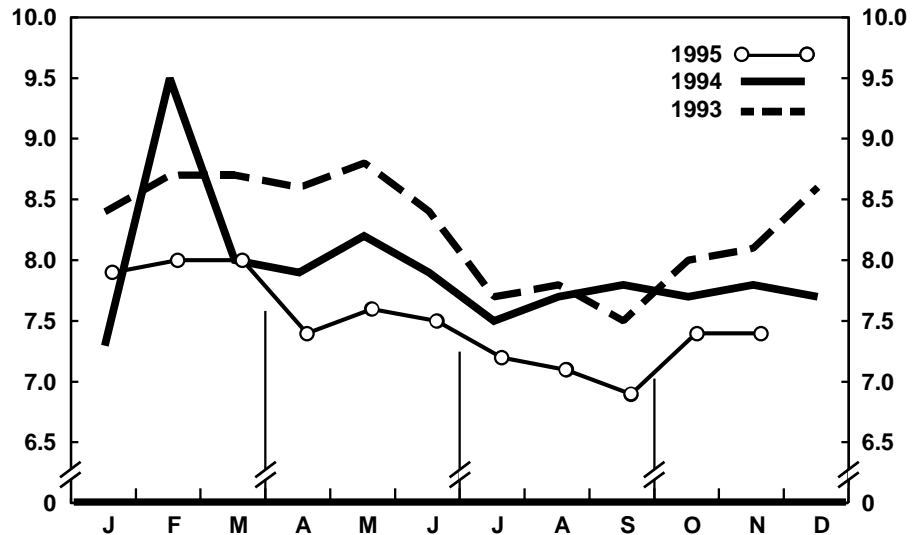
The death rate for the 12 months ending with November 1995 was 8.8 deaths per 1,000 population, the same as the rate for the comparable 12-month period a year earlier. The infant mortality rate for this 12-month period was 7.5 per 1,000 live births, 6 percent lower than the rate of 8.0 for the 12 months ending with November 1994.

Current Mortality Sample, 12 months ending with October 1995—The provisional death rate for the 12 months ending with October 1995 was 875.1 per 100,000 population, 1 percent lower than the rate of 882.4 for the 12-month period ending October 1994. The provisional age-adjusted death rate for the 12-month period ending with October 1995 was 503.0 per 100,000 U.S. standard million population, 2 percent lower than the rate of 511.9 for the 12-month period ending with October 1994. The age-adjusted death rates control for changes and variations in the age composition of the population; therefore, they are better indicators than crude rates for showing changes in mortality risk over time and for showing differences between race-sex groups within the population. Among the race-sex groups, the estimated age-adjusted death rates decreased for white males and black males. By age the death rate for the total population decreased for the following age groups: under 1 year, 55–64 years, 65–74 years, and 85 years and over.

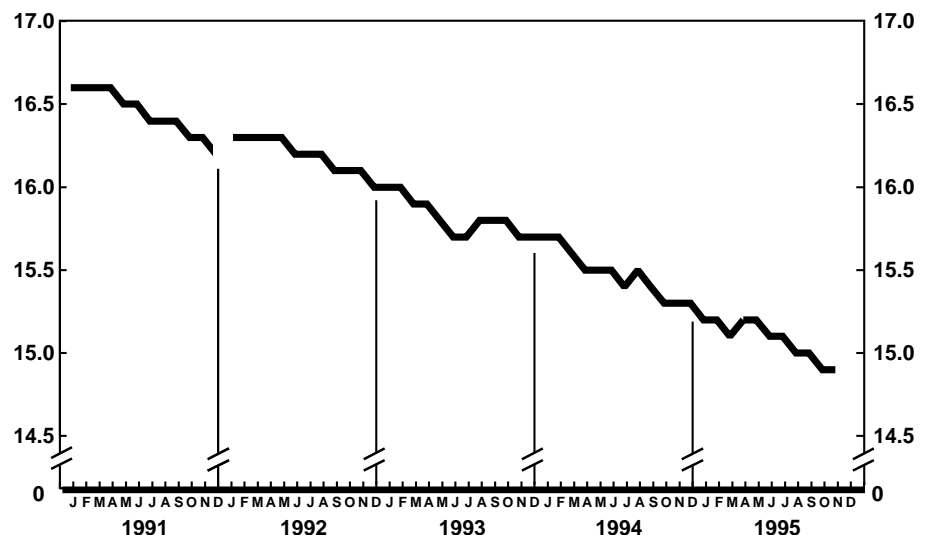
Among the major causes of death, the estimated death rate decreased between the two successive 12-month periods for Diseases of heart, Pneumonia



Provisional death rates per 1,000 population by month: United States, 1993–95



Provisional infant mortality rates per 1,000 live births by month: United States, 1993–95

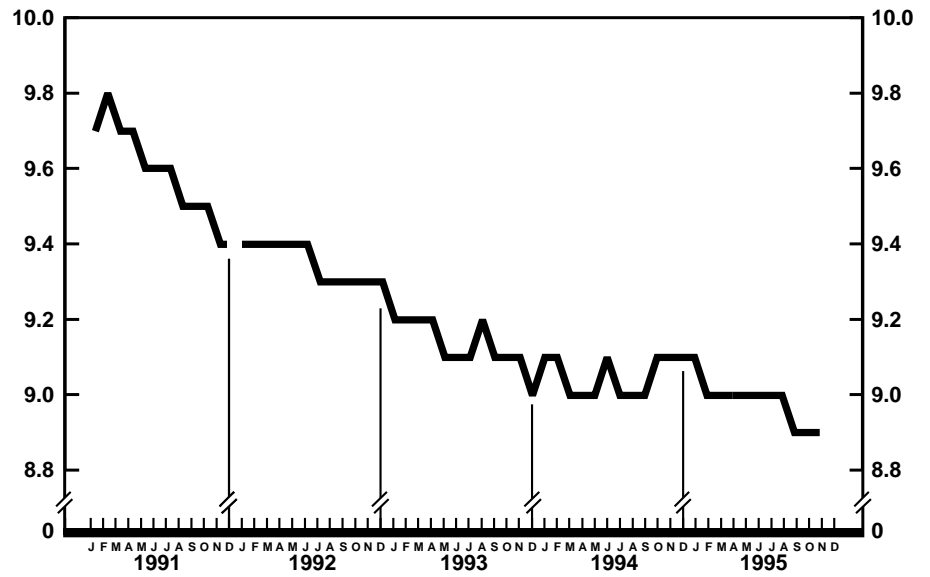


Provisional birth rates per 1,000 population for successive 12-month periods ending with month indicated: United States, 1991–95

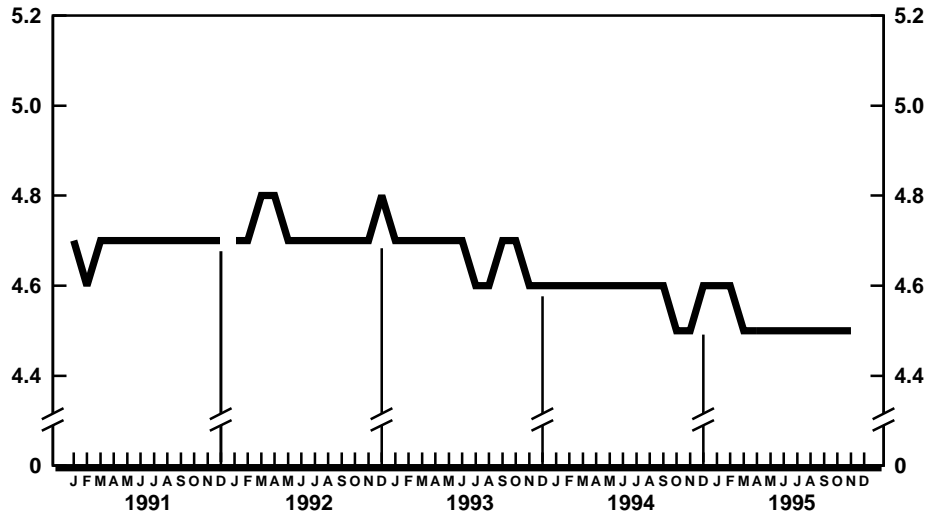
and influenza, and Homicide and legal intervention. The death rate increased between the two successive 12-month periods for Diabetes mellitus; Human immunodeficiency virus infection; and Nephritis, nephrotic syndrome, and nephrosis.

The death rate for Injury by firearms for the 12 months ending with October 1995 was 13.7 per 100,000 population, 8 percent lower than the rate of 14.9 for the comparable 12-month period a year earlier.

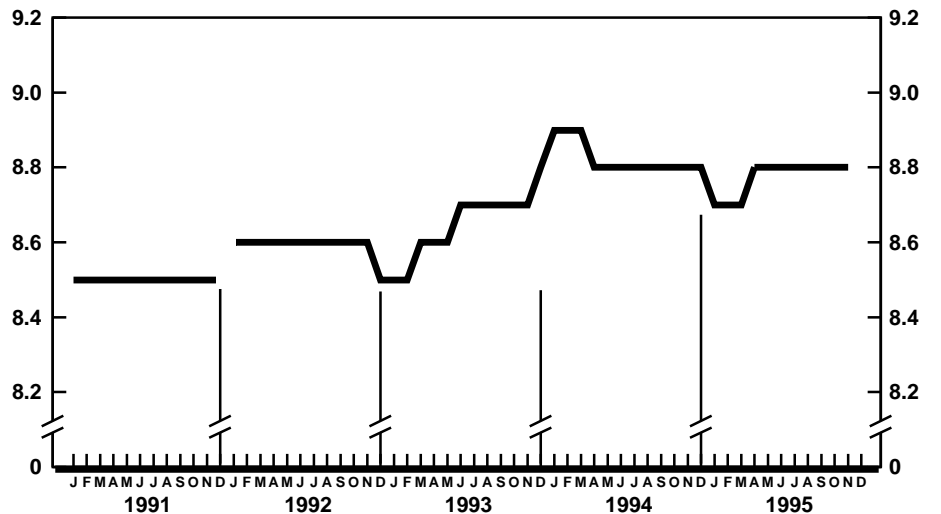
The infant mortality rate for the 12 months ending with October 1995 was 757.5 per 100,000 live births, 5 percent lower than the rate of 801.4 for the same 12-month period a year earlier. For infants under 28 days, the 12-month rate ending with October 1995 was 483.6 compared with a rate of 507.2 for the 12-month period a year earlier. The infant mortality rate for infants 28 days–11 months was 272.8 compared with a rate of 294.1 for the 12-month period a year earlier. The changes in the mortality rates for infants under 28 days and for those 28 days–11 months were not statistically significant. Among causes of infant death, the infant mortality rate decreased between the two successive 12-month periods for Sudden infant death syndrome and Respiratory distress syndrome.



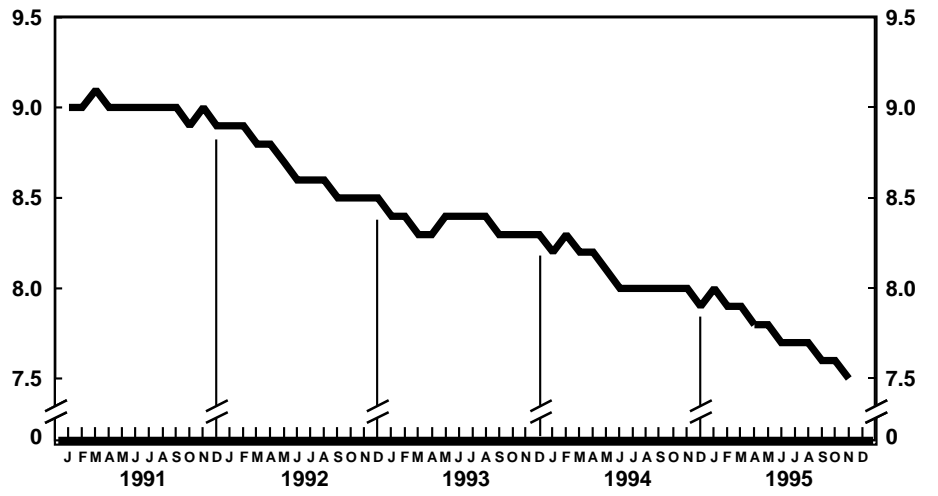
Provisional marriage rates per 1,000 population for successive 12-month periods ending with month indicated: United States, 1991–95



Provisional divorce rates per 1,000 population for successive 12-month periods ending with month indicated: United States, 1991–95



Provisional death rates per 1,000 population for successive 12-month periods ending with month indicated: United States, 1991–95



Provisional infant mortality rates per 1,000 live births for successive 12-month periods ending with month indicated: United States, 1991-95

Table 1. Provisional number of live births, marriages, divorces, deaths, and infant deaths and rates, by month: United States, January 1994–November 1995

[Data are provisional and are subject to monthly reporting variation; see Technical notes]

Period	Live births				Marriages		Divorces		Deaths		Infant deaths	
	Number	Rate per 1,000 women aged 15–44 years			Number	Rate per 1,000 population	Number	Rate per 1,000 population	Number	Rate per 1,000 population	Number	Rate per 1,000 live births
		Rate per 1,000 population	Unadjusted	Seasonally adjusted ¹								
1994:												
January	352,000	16.0	69.9	73.4	107,000	4.9	97,000	4.4	224,000	10.2	2,500	7.3
February	294,000	14.8	64.8	66.1	156,000	8.0	88,000	4.4	204,000	10.3	2,900	9.5
March	350,000	15.9	69.6	70.6	147,000	6.8	103,000	4.7	199,000	9.0	2,700	8.0
April	302,000	14.1	62.0	63.5	175,000	8.3	100,000	4.7	182,000	8.5	2,500	7.9
May	329,000	14.9	65.3	65.8	232,000	10.5	104,000	4.7	186,000	8.4	2,700	8.2
June	319,000	14.9	65.5	64.2	262,000	12.2	103,000	4.8	176,000	8.2	2,500	7.9
July	346,000	15.6	68.6	65.8	222,000	10.0	98,000	4.4	184,000	8.3	2,600	7.5
August	392,000	17.7	77.7	73.4	262,000	11.8	99,000	4.5	190,000	8.6	2,800	7.7
September	329,000	15.3	67.4	63.4	224,000	10.4	99,000	4.6	178,000	8.3	2,500	7.8
October	340,000	15.3	67.3	67.6	232,000	10.5	99,000	4.5	190,000	8.6	2,600	7.7
November	313,000	14.5	64.1	66.1	171,000	7.9	98,000	4.5	182,000	8.5	2,500	7.8
December	314,000	14.1	62.3	64.8	173,000	7.8	103,000	4.7	190,000	8.5	2,500	7.7
1995:												
January	350,000	15.8	69.4	72.8	111,000	5.1	96,000	4.3	220,000	9.9	2,700	7.9
February	287,000	14.3	63.1	64.3	146,000	7.5	89,000	4.4	194,000	9.7	2,400	8.0
March	338,000	15.2	67.1	68.0	148,000	6.8	98,000	4.4	208,000	9.4	2,700	8.0
April	313,000	14.5	64.1	65.8	165,000	7.9	98,000	4.6	200,000	9.3	2,400	7.4
May	321,000	14.4	63.5	64.0	238,000	10.7	103,000	4.6	184,000	8.2	2,500	7.6
June	318,000	14.8	65.2	63.8	263,000	12.2	104,000	4.8	180,000	8.3	2,400	7.5
July	337,000	15.1	66.6	64.0	224,000	10.0	97,000	4.4	188,000	8.4	2,400	7.2
August	364,000	16.3	72.1	68.0	254,000	11.4	99,000	4.4	184,000	8.2	2,400	7.1
September	331,000	15.3	67.6	63.7	219,000	10.1	99,000	4.6	178,000	8.2	2,300	6.9
October	328,000	14.7	64.9	65.2	226,000	10.1	98,000	4.4	190,000	8.5	2,500	7.4
November	309,000	14.3	63.3	65.3	176,000	8.1	95,000	4.4	187,000	8.6	2,300	7.4

¹The method of seasonal adjustment, developed by the U.S. Bureau of the Census, is described in *The X-11 Variant of the Census Method II Seasonal Adjustment Program*, Technical Paper No. 15 (1967 revision).

NOTE: Figures include all revisions received from the States and, therefore, may differ from those previously published.

Table 2. Provisional number of live births and deaths: Each division and State, November 1994 and 1995, and cumulative figures, 1993-95

[Data are estimates by State of residence; see Technical notes]

Area	Live births					Deaths				
	November		January–November			November		January–November		
	1995	1994	1995	1994	1993	1995	1994	1995	1994	1993
New England	10,916	12,131	158,150	160,317	170,793	10,094	7,844	109,642	106,481	109,812
Maine	1,165	974	13,053	13,141	13,192	904	421	10,944	10,228	10,193
New Hampshire	1,019	1,186	13,739	13,610	13,975	807	836	8,269	8,266	8,196
Vermont	614	849	6,295	6,613	6,722	485	454	4,618	4,235	4,435
Massachusetts	4,206	5,320	70,728	76,989	81,563	4,945	3,260	51,251	49,502	51,899
Rhode Island	944	1,119	11,659	12,346	13,024	759	760	8,697	8,459	8,843
Connecticut	2,968	2,683	42,676	37,618	42,317	2,194	2,113	25,863	25,791	26,246
Middle Atlantic	42,551	44,054	485,270	505,115	513,200	29,471	29,177	339,543	337,821	338,053
New York	20,187	21,931	244,089	254,576	256,199	12,852	12,649	154,687	154,214	155,965
New Jersey	10,232	10,126	99,910	105,169	109,252	5,741	6,343	68,086	66,295	66,353
Pennsylvania	12,132	11,997	141,271	145,370	147,749	10,878	10,185	116,770	117,312	115,735
East North Central	48,115	52,868	574,453	592,480	597,787	32,853	32,653	360,405	361,154	353,756
Ohio	12,797	13,277	143,004	148,997	146,630	9,160	9,232	96,501	97,030	93,086
Indiana	6,305	7,235	75,534	76,297	77,889	4,358	4,147	47,738	48,985	47,378
Illinois	14,150	15,381	170,609	173,499	175,101	8,909	8,743	98,827	97,918	97,817
Michigan	9,587	11,500	123,216	130,071	134,293	7,003	7,036	76,553	76,304	75,189
Wisconsin	5,276	5,475	62,090	63,616	63,874	3,423	3,495	40,786	40,917	40,286
West North Central	19,810	19,345	234,340	232,313	239,261	14,019	14,226	157,419	156,060	157,638
Minnesota	5,018	4,870	58,053	59,338	59,030	3,138	2,984	33,857	33,229	33,191
Iowa	2,620	2,710	31,604	33,003	34,051	2,119	2,217	22,976	24,113	26,213
Missouri	5,593	5,335	69,459	69,996	72,163	4,443	4,700	53,448	51,891	51,743
North Dakota	630	680	7,937	7,902	8,010	500	709	5,465	5,644	5,365
South Dakota	792	915	9,918	9,769	9,883	672	636	6,331	6,280	6,180
Nebraska	1,687	1,862	21,254	20,875	20,901	1,309	1,137	13,822	13,339	13,686
Kansas	3,470	2,973	36,115	31,430	35,223	1,838	1,843	21,520	21,564	21,260
South Atlantic	52,366	53,882	601,504	606,443	614,230	36,815	34,279	399,837	393,291	383,615
Delaware	842	912	9,276	9,577	9,759	493	547	5,600	5,680	5,535
Maryland	4,705	6,726	66,072	65,172	69,396	3,717	3,122	37,541	35,704	38,255
District of Columbia	641	750	8,175	8,998	9,034	547	581	5,839	6,525	6,235
Virginia	10,283	7,331	85,188	86,704	88,178	4,601	4,248	48,345	49,277	47,465
West Virginia	1,444	1,258	19,416	19,743	20,366	1,632	1,511	18,202	18,461	18,256
North Carolina	7,240	7,870	94,033	93,798	91,034	5,513	4,947	59,459	59,054	56,761
South Carolina	4,726	4,269	46,515	47,408	49,729	3,260	2,616	30,136	29,236	28,887
Georgia	8,500	10,366	105,012	101,518	101,996	4,646	4,304	53,234	52,053	50,691
Florida	13,985	14,400	167,817	173,525	174,738	12,406	12,403	141,481	137,301	131,530
East South Central	19,084	19,346	207,567	211,819	213,180	12,792	12,842	145,646	143,272	141,142
Kentucky	4,013	4,075	47,514	47,997	47,960	3,123	3,001	35,448	34,550	33,917
Tennessee	8,418	6,789	69,255	69,450	68,027	4,163	4,433	46,851	45,073	44,522
Alabama	4,432	4,646	56,527	55,790	58,711	3,246	3,215	38,609	39,046	38,466
Mississippi	2,221	3,836	34,271	38,582	38,482	2,260	2,193	24,738	24,603	24,237
West South Central	35,110	39,918	437,355	436,291	444,700	18,681	18,687	216,396	219,315	214,804
Arkansas	3,418	2,991	31,535	31,943	31,663	2,478	2,038	23,611	24,588	24,277
Louisiana	4,641	6,290	61,870	63,163	65,566	2,907	2,649	36,120	37,227	37,276
Oklahoma	3,312	3,319	42,820	41,625	42,498	2,813	2,701	30,031	29,766	29,596
Texas ¹	23,739	27,318	301,130	299,560	304,973	10,483	11,299	126,634	127,734	123,655
Mountain	19,037	18,444	224,595	224,431	227,484	9,994	9,647	105,143	104,090	99,171
Montana	883	867	10,291	10,097	10,520	601	583	6,951	6,756	6,858
Idaho	1,470	1,340	16,269	16,008	15,812	680	694	7,723	7,767	7,500
Wyoming	480	606	5,839	6,002	6,025	307	315	3,388	3,225	3,215
Colorado	3,851	4,368	46,340	50,056	50,614	2,209	2,023	23,034	22,242	21,563
New Mexico	2,132	2,233	24,996	25,777	25,111	1,259	1,009	11,533	11,202	10,928
Arizona	5,805	5,104	65,657	61,296	65,200	3,081	3,247	31,632	32,508	30,188
Utah	2,527	3,017	35,632	35,458	33,943	925	857	9,810	9,603	9,141
Nevada	1,889	909	19,571	19,737	20,259	932	919	11,072	10,787	9,778
Pacific	61,960	52,325	655,865	678,284	672,887	22,548	22,149	277,563	274,901	267,789
Washington	5,997	6,101	72,329	73,269	65,980	3,649	3,507	36,719	35,406	37,732
Oregon	3,374	3,476	40,391	39,090	39,778	2,230	1,982	25,781	25,321	25,044
California ¹	50,435	40,622	516,859	537,007	539,579	15,850	15,939	205,906	205,355	196,315
Alaska	640	668	9,436	11,258	9,582	217	180	2,249	2,188	2,051
Hawaii	1,514	1,458	16,850	17,660	17,968	602	541	6,908	6,631	6,647
Puerto Rico ²	---	---	---	---	---	---	---	---	---	---

--- Data not available.

¹Figures include adjustments for varying lengths of reporting periods; see Technical notes.

²Data for Puerto Rico are not included in U.S. total figures.

NOTES: Figures include all revisions received from the States. Cumulative figures for the current year reflect revisions received for previous months, and figures for earlier years may differ from those previously published.

Table 3. Provisional number of marriages and divorces: Each division and State, November 1994 and 1995, and cumulative figures, 1993–95

[By State of occurrence. Number of events reported; see Technical notes. Divorces include reported annulments]

Area	Marriages					Divorces				
	November		January–November			November		January–November		
	1995	1994	1995	1994	1993	1995	1994	1995	1994	1993
New England	9,053	6,996	93,406	98,635	83,716	3,027	3,822	36,386	36,033	38,931
Maine	679	568	10,370	9,924	9,932	520	511	4,875	4,897	4,811
New Hampshire	971	525	8,966	9,243	6,819	456	443	4,582	4,632	4,527
Vermont	719	663	5,760	5,441	5,695	170	108	2,566	2,143	2,539
Massachusetts	5,093	3,317	41,097	46,719	32,993	805	1,792	12,046	12,935	14,559
Rhode Island	491	510	6,906	6,627	6,726	278	274	3,368	2,961	3,110
Connecticut	1,100	1,413	20,307	20,681	21,551	798	694	8,949	8,465	9,385
Middle Atlantic	27,655	27,217	254,996	262,292	260,028	9,582	10,320	110,478	110,340	110,563
New York ¹	15,900	16,408	134,915	142,043	138,471	4,691	5,432	52,032	52,303	51,739
New Jersey	4,410	4,310	49,582	49,324	49,731	1,811	1,718	22,414	21,885	22,654
Pennsylvania	7,345	6,499	70,499	70,925	71,826	3,080	3,170	36,032	36,152	36,170
East North Central	24,521	25,669	310,252	319,293	313,980	² 11,410	² 12,343	² 132,678	² 135,849	² 138,773
Ohio	6,693	7,605	84,261	85,600	82,492	3,873	4,020	44,412	45,438	46,663
Indiana	3,612	3,281	46,662	46,314	46,033	---	---	---	---	---
Illinois	7,043	7,224	77,485	85,989	84,135	3,275	3,786	35,644	38,675	39,334
Michigan	4,817	5,232	67,037	66,704	66,568	2,938	3,239	36,605	35,913	36,507
Wisconsin	2,356	2,327	34,807	34,686	34,752	1,324	1,298	16,017	15,823	16,269
West North Central	9,790	9,126	137,293	136,195	137,619	6,366	5,803	69,001	70,848	71,319
Minnesota	1,741	2,002	31,182	30,842	30,274	1,300	1,153	14,308	14,532	15,212
Iowa	1,572	1,722	20,972	21,326	23,525	768	842	9,590	10,186	10,066
Missouri	3,702	3,098	42,044	41,062	41,453	2,251	2,186	24,215	24,727	24,727
North Dakota	279	273	4,325	4,531	4,592	165	151	2,026	1,989	2,030
South Dakota	379	399	6,864	7,051	7,005	219	297	2,621	2,752	2,621
Nebraska	789	758	11,495	11,610	11,619	607	488	5,800	5,945	5,810
Kansas	1,328	874	20,411	19,773	19,151	1,056	686	10,441	10,717	10,853
South Atlantic	34,160	34,726	410,234	407,105	401,721	18,000	19,103	207,422	212,431	213,164
Delaware	413	467	4,991	4,718	4,711	277	216	3,388	3,164	2,828
Maryland	2,796	3,098	39,299	39,717	39,086	772	1,374	13,103	15,556	15,270
District of Columbia	841	384	2,645	2,593	2,328	302	165	1,631	2,046	1,733
Virginia	4,967	5,230	63,166	64,124	63,461	2,607	2,334	26,072	26,876	26,808
West Virginia	840	891	10,529	9,812	12,316	768	739	8,299	8,294	9,012
North Carolina	4,365	4,564	57,188	47,082	43,621	2,615	2,946	34,208	33,699	31,985
South Carolina	2,761	3,630	40,932	47,582	48,663	1,134	1,360	13,608	14,114	13,918
Georgia	4,661	4,250	57,651	57,537	56,711	2,525	3,386	33,843	34,225	34,782
Florida	12,516	12,212	133,833	133,940	130,824	7,000	6,583	73,270	74,457	76,828
East South Central	13,993	13,242	177,094	171,930	167,953	7,137	7,679	88,244	90,245	87,035
Kentucky	3,415	3,642	43,410	43,610	42,378	1,806	1,746	21,084	20,752	19,718
Tennessee	5,495	5,492	75,957	71,202	67,352	2,631	3,210	31,224	31,449	30,214
Alabama	3,190	2,243	38,317	36,518	36,887	1,967	1,956	24,119	24,508	25,058
Mississippi	1,893	1,865	19,410	20,600	21,336	733	767	11,817	13,536	12,045
West South Central	20,030	23,143	271,450	275,076	260,010	² 11,213	² 11,296	² 126,563	² 129,253	² 129,751
Arkansas	3,077	3,169	33,036	35,150	33,847	1,406	1,559	14,636	16,307	15,799
Louisiana	3,701	4,104	37,132	38,899	33,698	---	---	---	---	---
Oklahoma	1,993	1,941	26,061	26,809	27,927	1,753	1,701	20,191	19,921	20,902
Texas ³	11,259	13,929	175,221	174,218	164,538	8,054	8,036	91,736	93,025	93,050
Mountain	20,604	19,458	254,317	250,048	234,885	² 6,071	² 7,069	² 69,238	² 81,098	² 70,214
Montana	353	378	6,292	6,513	6,576	347	362	3,816	3,786	3,937
Idaho	1,062	614	14,528	14,092	12,741	553	605	6,223	6,502	6,297
Wyoming	338	380	4,605	4,453	4,190	282	311	2,953	2,809	2,713
Colorado	3,299	1,837	34,910	32,013	31,634	---	---	---	---	---
New Mexico ^{4,5}	1,107	681	13,926	11,321	11,610	783	717	10,691	9,047	9,166
Arizona ¹	3,212	2,961	35,663	33,341	35,627	2,295	1,957	25,418	21,360	22,561
Utah	1,659	1,007	20,395	18,902	19,180	723	747	8,232	8,398	8,076
Nevada	9,574	11,600	123,998	129,413	113,327	1,088	974	11,905	11,872	---
Pacific	24,573	19,662	266,953	272,540	272,394	² 5,639	² 4,847	² 49,246	² 49,885	² 47,667
Washington	2,311	2,208	39,444	38,785	39,731	3,720	2,953	27,884	27,676	25,167
Oregon	1,588	1,750	24,228	23,511	22,822	1,043	1,250	13,713	14,844	14,970
California	18,710	13,959	180,906	188,630	188,693	---	---	---	---	---
Alaska	401	325	5,088	5,055	5,007	395	334	2,747	3,051	2,995
Hawaii	1,563	1,420	17,287	16,559	16,141	481	310	4,902	4,314	4,535
Puerto Rico ⁶	---	---	---	---	---	---	---	---	---	---

--- Data not available.

¹Figures for marriages are marriage licenses issued for some counties.

²Excludes figures for State(s) shown below as not available.

³Figures include adjustments for varying lengths of reporting periods; see Technical notes.

⁴Figures for marriages are marriage licenses issued.

⁵Figures for divorces include estimates for some counties.

⁶Data for Puerto Rico are not included in U.S. total figures.

NOTES: Figures include all revisions received from the States. Cumulative figures for the current year reflect revisions received for previous months, and figures for earlier years may differ from those previously published.

Table 4. Provisional number of deaths under 1 year and infant mortality rates: Each division and State, 12 months ending with November 1994 and 1995

[Data are estimates by State of residence; see Technical notes. Infant mortality rates are deaths under 1 year per 1,000 live births in specified area]

Area	12 months ending with November			
	1995		1994	
	Number	Rate	Number	Rate
New England	1,683	15.4	1,029	5.9
Maine	78	5.5	92	6.1
New Hampshire	69	4.7	95	6.5
Vermont	41	6.0	45	6.3
Massachusetts	408	5.3	452	5.5
Rhode Island	87	6.8	85	6.3
Connecticut	---	---	260	6.3
Middle Atlantic	11,918	17.2	4,392	8.0
New York	---	---	2,197	7.9
New Jersey	783	7.0	975	8.2
Pennsylvania	1,135	7.4	1,220	7.8
East North Central	5,355	8.6	5,728	9.0
Ohio	1,312	8.4	1,424	8.9
Indiana	760	9.2	790	9.5
Illinois	1,639	8.8	1,750	9.2
Michigan	1,139	8.6	1,221	8.8
Wisconsin	505	7.5	543	7.9
West North Central	1,851	7.3	1,968	7.8
Minnesota	394	6.2	442	6.9
Iowa	248	7.2	245	6.8
Missouri	589	7.9	621	8.3
North Dakota	49	5.6	58	6.7
South Dakota	108	10.0	128	11.9
Nebraska	179	7.6	169	7.4
Kansas	284	7.5	305	8.9
South Atlantic	5,603	8.5	5,993	9.0
Delaware	73	7.3	75	7.2
Maryland	661	9.1	649	9.1
District of Columbia	148	16.7	196	20.1
Virginia	696	7.4	753	8.0
West Virginia	150	7.1	147	6.9
North Carolina	987	9.7	1,012	9.8
South Carolina	412	8.2	471	9.1
Georgia	1,089	9.7	1,086	9.7
Florida	1,387	7.5	1,604	8.4
East South Central	2,186	9.6	2,078	9.0
Kentucky	407	7.9	399	7.6
Tennessee	745	9.9	663	8.8
Alabama	623	10.1	599	9.9
Mississippi	411	10.5	417	9.9
West South Central	3,471	7.4	3,732	7.9
Arkansas	283	8.3	296	8.6
Louisiana	632	9.4	664	9.8
Oklahoma	409	8.7	442	9.6
Texas ²	2,147	6.6	2,330	7.2
Mountain	1,631	6.7	1,829	7.5
Montana	79	7.0	97	8.8
Idaho	110	6.2	132	7.6
Wyoming	57	9.2	44	6.6
Colorado	349	6.9	362	6.7
New Mexico	198	7.3	257	9.1
Arizona	513	7.3	570	8.5
Utah	206	5.3	232	6.1
Nevada	119	5.6	135	6.6
Pacific	4,337	6.1	4,837	6.5
Washington	399	5.1	404	5.1
Oregon	266	6.1	286	6.9
California ²	3,485	6.2	3,948	6.7
Alaska	70	6.8	70	5.7
Hawaii	117	6.3	129	6.7
Puerto Rico ³	---	---	---	---

--- Data not available.

¹Excludes figures for State shown below as not available.

²Figures include adjustments for varying lengths of reporting periods; see Technical notes.

³Data for Puerto Rico are not included in U.S. total figures.

NOTES: Figures include all revisions received from the States. Figures for the current year reflect revisions received for previous months, and figures for earlier years may differ from those previously published.

Table 5. Provisional number of deaths and death rates, by age, race, and sex, and age-adjusted death rates by race and sex: United States, October 1994 and 1995, cumulative figures 1994 and 1995, and 12 months ending with October 1994 and 1995

[Data are provisional, estimated from a 10-percent sample of deaths. Age-specific rates on an annual basis per 100,000 population in specified group; age-adjusted rates per 100,000 U.S. standard million population; see Technical notes. Because of rounding of estimates, figures may not add to totals. For method of computation and information on standard errors of the estimates, see Technical notes]

Age, race, and sex	October				January–October				12 months ending with October							
	1995		1994		1995		1994		1995		1994					
	Number	Rate	Number	Rate	Number	Rate	Number	Rate	Number	Rate	Number	Rate				
All races, both sexes ¹																
All ages	190,000	847.9	190,000	857.8	1,924,000	880.3	1,914,000	882.9	2,296,000	875.1	2,296,000	882.4				
Under 1 year.	} 3,610	73.6	3,990	81.6	24,500	² 766.9	26,400	² 805.6	29,500	² 767.9	31,800	² 807.1				
1–4 years					5,690	43.3	6,070	45.8	6,800	43.1	7,160	45.1				
5–14 years					6,650	20.9	7,260	23.2	7,940	20.9	8,560	22.8				
15–24 years					3,170	103.8	3,020	98.8	28,960	96.8	29,750	99.3	35,100	97.7	35,290	98.1
25–34 years					4,920	142.4	4,770	136.0	48,950	143.8	48,660	140.9	58,770	143.6	58,840	141.9
35–44 years	8,360	230.2	8,780	246.3	85,370	241.6	84,480	243.7	101,330	239.1	100,670	242.1				
45–54 years	11,950	446.9	11,430	444.9	119,960	465.3	113,130	456.2	142,610	461.6	135,640	456.5				
55–64 years	20,090	1,116.7	21,010	1,175.2	195,920	1,113.9	201,490	1,151.1	234,200	1,109.6	241,470	1,149.2				
65–74 years	38,940	2,444.1	40,790	2,560.7	401,380	2,570.0	408,070	2,616.9	477,870	2,548.8	489,450	2,614.7				
75–84 years	52,810	5,539.4	52,650	5,608.5	543,310	5,868.9	538,090	5,896.9	650,030	5,857.7	646,210	5,900.9				
85 years and over.	45,800	14,721.8	43,960	14,758.9	462,750	15,367.0	450,810	15,623.8	550,610	15,260.8	540,880	15,664.1				
Not stated	70	...	60	...	880	...	510	...	1,040	...	680	...				
Age-adjusted rate ³	488.7	...	502.0	...	505.5	...	512.3	...	503.0	...	511.9				
All races, male ¹																
All ages	97,430	891.7	97,960	903.5	978,100	916.4	979,960	925.8	1,164,730	909.3	1,174,900	924.7				
Under 1 year.	} 2,140	85.2	2,420	96.7	13,600	² 830.1	14,870	² 887.6	16,450	² 835.0	17,950	² 890.4				
1–4 years					3,270	48.9	3,610	53.4	3,900	48.3	4,210	51.8				
5–14 years					4,060	25.1	4,400	27.5	4,700	24.1	5,160	26.9				
15–24 years					2,470	158.5	2,360	151.1	22,070	144.5	22,840	149.2	26,870	146.5	27,000	146.9
25–34 years					3,590	207.9	3,430	195.6	35,650	209.4	35,470	205.5	42,850	209.5	43,160	208.1
35–44 years	5,610	311.5	6,240	352.7	59,040	337.0	59,050	343.4	69,990	333.0	70,040	339.6				
45–54 years	7,640	584.8	7,180	571.9	75,810	601.8	71,260	587.9	90,060	596.8	85,360	587.8				
55–64 years	12,000	1,403.1	13,190	1,552.5	117,410	1,404.7	123,560	1,485.9	140,390	1,400.0	147,480	1,477.2				
65–74 years	22,660	3,198.7	23,090	3,271.2	229,400	3,306.4	234,410	3,396.8	272,140	3,267.0	281,040	3,393.0				
75–84 years	25,990	7,007.4	25,630	7,092.2	266,600	7,430.6	263,380	7,516.4	317,500	7,385.4	316,460	7,527.6				
85 years and over.	15,290	17,580.8	14,390	17,079.7	150,640	17,901.7	146,790	18,043.0	179,220	17,762.1	176,640	18,116.9				
Not stated	50	...	40	...	560	...	330	...	650	...	420	...				
Age-adjusted rate ³	632.5	...	651.3	...	649.2	...	663.1	...	644.9	...	661.9				
All races, female ¹																
All ages	92,280	806.0	92,490	814.2	946,230	845.8	934,740	842.6	1,131,100	842.4	1,121,770	842.5				
Under 1 year.	} 1,470	61.4	1,570	65.8	10,900	² 697.4	11,510	² 718.0	13,060	² 695.1	13,870	² 719.0				
1–4 years					2,420	37.7	2,460	38.1	2,910	37.7	2,960	38.1				
5–14 years					2,600	16.9	2,860	18.8	3,240	17.5	3,390	18.5				
15–24 years					700	46.8	660	44.1	6,890	47.0	6,910	47.1	8,230	46.8	8,290	47.1
25–34 years					1,330	76.9	1,350	77.0	13,300	78.1	13,190	76.4	15,920	77.8	15,680	75.6
35–44 years	2,760	150.8	2,540	141.4	26,330	147.9	25,430	145.5	31,330	146.6	30,630	146.2				
45–54 years	4,310	315.1	4,250	323.6	44,150	334.7	41,870	330.3	52,550	332.5	50,280	331.0				
55–64 years	8,090	857.3	7,820	833.5	78,500	850.7	77,940	848.3	93,820	846.9	94,000	852.3				
65–74 years	16,280	1,839.9	17,700	1,995.6	171,980	1,981.4	173,660	1,998.0	205,730	1,974.2	208,400	1,996.9				
75–84 years	26,820	4,603.9	27,020	4,679.9	276,710	4,880.9	274,720	4,887.6	332,530	4,891.6	329,750	4,886.6				
85 years and over.	30,510	13,617.5	29,570	13,849.0	312,120	14,382.5	304,020	14,669.0	371,390	14,278.7	364,250	14,687.5				
Not stated	20	...	20	...	320	...	180	...	380	...	260	...				
Age-adjusted rate ³	368.8	...	376.6	...	385.8	...	386.9	...	384.6	...	387.2				
White																
All ages	163,900	883.1	163,130	885.1	1,653,370	911.1	1,645,180	913.2	1,973,550	906.2	1,974,490	913.1				
Under 1 year.	} 2,740	70.5	2,810	72.6	16,280	² 649.9	17,080	² 664.4	19,540	² 648.3	20,570	² 664.8				
1–4 years					3,920	37.8	4,080	38.8	4,600	36.9	4,850	38.6				
5–14 years					4,850	19.2	5,140	20.7	5,730	19.0	6,060	20.3				
15–24 years					2,330	95.7	2,240	91.8	20,490	85.8	21,250	88.7	24,460	85.3	25,040	87.1
25–34 years					3,450	122.3	3,340	116.5	34,610	124.3	34,180	120.9	41,780	124.9	41,690	122.7
35–44 years	6,020	199.2	6,350	213.9	60,650	206.1	59,930	207.4	72,150	204.4	71,480	206.2				
45–54 years	9,350	409.2	8,730	396.9	92,200	417.9	86,950	409.3	109,610	414.7	104,170	409.1				
55–64 years	16,270	1,047.2	16,850	1,089.2	158,850	1,044.8	164,490	1,084.9	190,240	1,042.5	197,330	1,084.0				
65–74 years	33,710	2,386.8	35,160	2,486.5	346,220	2,498.3	352,890	2,547.0	412,630	2,480.0	423,010	2,543.4				
75–84 years	47,690	5,517.4	47,100	5,539.5	488,560	5,820.1	483,810	5,851.5	585,150	5,814.9	581,640	5,861.5				
85 years and over.	42,270	14,936.8	40,490	14,893.4	426,050	15,546.8	415,060	15,757.6	506,860	15,434.2	498,210	15,791.1				
Not stated	60	...	40	...	680	...	320	...	800	...	430	...				
Age-adjusted rate ³	466.5	...	474.2	...	478.0	...	484.4	...	475.8	...	484.1				

See footnotes at end of table.

Table 5. Provisional number of deaths and death rates, by age, race, and sex, and age-adjusted death rates by race and sex: United States, October 1994 and 1995, cumulative figures 1994 and 1995, and 12 months ending with October 1994 and 1995—Con.

[Data are provisional, estimated from a 10-percent sample of deaths. Age-specific rates on an annual basis per 100,000 population in specified group; age-adjusted rates per 100,000 U.S. standard million population; see Technical notes. Because of rounding of estimates, figures may not add to totals. For method of computation and information on standard errors of the estimates, see Technical notes]

Age, race, and sex	October				January–October				12 months ending with October			
	1995		1994		1995		1994		1995		1994	
	Number	Rate	Number	Rate	Number	Rate	Number	Rate	Number	Rate	Number	Rate
White male												
All ages.	83,550	917.6	83,040	918.5	831,720	934.4	832,030	941.7	990,450	927.2	998,300	941.4
Under 1 year.					9,190	² 714.9	9,510	² 723.4	11,020	² 712.8	11,460	² 723.5
1–4 years	} 1,700	85.3	1,650	83.0	2,400	45.1	2,420	45.2	2,820	44.1	2,850	44.3
5–14 years					2,950	22.9	3,080	24.0	3,380	21.8	3,650	23.8
15–24 years	1,770	141.8	1,700	135.8	15,420	125.8	16,060	130.6	18,490	125.7	18,860	127.8
25–34 years	2,590	181.9	2,460	169.8	25,750	183.1	25,370	177.7	31,010	183.6	31,020	180.8
35–44 years	4,010	264.6	4,670	313.7	42,580	288.5	42,460	292.9	50,590	285.8	50,480	290.4
45–54 years	6,040	535.2	5,460	502.7	58,710	539.2	55,260	526.9	69,710	534.3	66,200	526.6
55–64 years	9,860	1,319.8	10,680	1,437.0	96,530	1,321.1	101,890	1,399.0	115,610	1,318.5	121,650	1,391.2
65–74 years	19,820	3,132.8	20,240	3,208.3	199,510	3,217.4	204,000	3,304.6	237,050	3,184.0	244,600	3,301.8
75–84 years	23,750	7,038.4	22,830	6,956.6	241,060	7,384.7	237,660	7,465.3	287,150	7,342.1	285,810	7,483.9
85 years and over.	13,970	17,782.2	13,330	17,477.7	137,160	18,061.4	134,120	18,236.5	163,090	17,922.0	161,440	18,303.9
Not stated	40	...	20	...	460	...	210	...	540	...	270	...
Age-adjusted rate ³	604.2	...	614.2	...	613.7	...	625.5	...	609.6	...	624.8
White female												
All ages.	80,350	849.9	80,080	852.8	821,650	888.7	813,150	885.7	983,100	885.9	976,190	885.9
Under 1 year.					7,080	² 579.8	7,560	² 604.1	8,520	² 580.4	9,110	² 603.3
1–4 years	} 1,040	55.0	1,160	61.5	1,520	30.0	1,660	32.4	1,790	29.4	2,000	32.6
5–14 years					1,900	15.4	2,060	17.0	2,350	16.0	2,420	16.7
15–24 years	560	47.2	540	45.4	5,070	43.5	5,190	44.5	5,970	42.7	6,170	44.1
25–34 years	860	61.6	880	62.0	8,870	64.3	8,820	63.1	10,770	65.0	10,680	63.5
35–44 years	2,010	133.4	1,680	113.5	18,070	123.1	17,470	121.2	21,570	122.5	20,990	121.4
45–54 years	3,310	286.2	3,270	293.7	33,480	300.0	31,700	294.6	39,900	298.1	37,970	294.5
55–64 years	6,400	793.5	6,180	768.9	62,320	789.0	62,590	794.5	74,630	787.2	75,680	800.0
65–74 years	13,890	1,781.5	14,920	1,905.1	146,710	1,916.1	148,890	1,938.2	175,580	1,909.9	178,410	1,934.2
75–84 years	23,950	4,545.3	24,270	4,648.8	247,500	4,824.9	246,160	4,841.0	298,000	4,844.0	295,840	4,846.7
85 years and over.	28,300	13,843.4	27,170	13,890.8	288,890	14,581.5	280,940	14,798.7	343,770	14,480.6	336,770	14,816.1
Not stated	20	...	20	...	220	...	110	...	250	...	160	...
Age-adjusted rate ³	350.9	...	356.2	...	364.3	...	366.6	...	363.6	...	366.9
Black												
All ages.	23,190	820.4	24,080	864.0	239,070	867.5	238,380	877.5	284,200	859.3	284,830	873.8
Under 1 year.					7,410	² 1,427.8	8,270	² 1,569.4	8,990	² 1,440.7	10,020	² 1,578.0
1–4 years	} 800	104.4	1,050	137.8	1,550	74.3	1,680	79.9	1,930	77.6	1,910	76.0
5–14 years					1,510	30.4	1,720	35.5	1,830	31.1	2,040	35.3
15–24 years	710	153.0	640	139.2	7,280	160.3	7,410	165.0	9,190	168.8	8,920	165.6
25–34 years	1,310	285.1	1,320	285.5	13,020	288.5	12,830	282.3	15,350	282.9	15,170	278.0
35–44 years	2,130	480.1	2,160	500.5	22,570	524.4	22,630	541.1	26,610	515.1	26,830	535.1
45–54 years	2,310	825.9	2,360	890.3	24,640	918.6	23,210	909.7	29,320	912.5	27,840	910.7
55–64 years	3,480	1,918.3	3,620	2,032.5	32,620	1,845.2	32,420	1,864.7	38,750	1,827.0	38,610	1,851.8
65–74 years	4,590	3,336.0	4,950	3,624.5	48,670	3,623.1	48,950	3,667.9	57,570	3,573.6	59,090	3,690.8
75–84 years	4,590	6,487.8	4,870	6,900.1	47,590	6,913.8	47,770	6,968.0	56,400	6,836.4	56,640	6,882.1
85 years and over.	3,270	13,799.9	3,090	14,552.9	32,020	14,034.2	31,320	15,181.5	38,040	13,934.1	37,520	15,314.3
Not stated	10	...	20	...	180	...	170	...	220	...	230	...
Age-adjusted rate ³	728.1	...	775.8	...	771.1	...	783.5	...	764.8	...	781.0
Black male												
All ages.	12,450	928.5	13,030	985.1	128,120	980.1	129,910	1,008.1	152,500	972.3	154,790	1,001.0
Under 1 year.					3,870	² 1,465.4	4,840	² 1,809.1	4,790	² 1,511.0	5,870	² 1,823.0
1–4 years	} 410	105.4	700	181.2	780	74.2	950	90.7	950	75.3	1,070	84.0
5–14 years					980	39.8	1,080	44.6	1,150	38.5	1,230	42.0
15–24 years	600	258.6	550	239.4	5,740	253.7	5,900	263.4	7,290	267.9	7,110	264.1
25–34 years	900	414.1	880	402.1	8,990	420.1	8,940	415.8	10,660	415.6	10,700	414.4
35–44 years	1,480	714.8	1,420	704.6	15,000	746.2	15,310	784.4	17,660	732.8	17,970	768.3
45–54 years	1,410	1,112.0	1,510	1,256.5	15,330	1,258.5	14,220	1,227.4	18,300	1,256.9	16,970	1,224.4
55–64 years	1,950	2,474.1	2,130	2,743.9	18,390	2,395.7	19,030	2,512.7	21,810	2,368.1	22,580	2,484.0
65–74 years	2,470	4,308.5	2,510	4,430.8	26,010	4,651.3	26,840	4,850.5	30,580	4,564.2	32,230	4,853.9
75–84 years	2,000	7,771.7	2,410	9,458.6	21,890	8,745.3	22,150	8,980.5	26,050	8,683.3	26,210	8,854.7
85 years and over.	1,220	17,734.0	880	14,193.5	11,050	16,744.6	10,520	17,542.6	13,170	16,670.9	12,680	17,859.2
Not stated	10	...	20	...	90	...	110	...	100	...	140	...
Age-adjusted rate ³	959.9	...	1,034.3	...	1,015.7	...	1,050.9	...	1,008.3	...	1,044.1

See footnotes at end of table.

Table 5. Provisional number of deaths and death rates, by age, race, and sex, and age-adjusted death rates by race and sex: United States, October 1994 and 1995, cumulative figures 1994 and 1995, and 12 months ending with October 1994 and 1995—Con.

[Data are provisional, estimated from a 10-percent sample of deaths. Age-specific rates on an annual basis per 100,000 population in specified group; age-adjusted rates per 100,000 U.S. standard million population; see Technical notes. Because of rounding of estimates, figures may not add to totals. For method of computation and information on standard errors of the estimates, see Technical notes]

Age, race, and sex	October				January–October				12 months ending with October			
	1995		1994		1995		1994		1995		1994	
	Number	Rate	Number	Rate	Number	Rate	Number	Rate	Number	Rate	Number	Rate
Black female												
All ages.	10,740	722.8	11,060	755.3	110,950	765.7	108,470	759.8	131,690	757.4	130,040	759.1
Under 1 year.	} 400	106.0	350	93.2	3,540	² 1,385.3	3,430	² 1,323.0	4,190	² 1,364.8	4,150	² 1,325.9
1–4 years					780	76.4	730	71.8	980	80.0	840	67.7
5–14 years					530	21.9	640	27.0	680	23.5	810	28.5
15–24 years					120	51.7	90	*	1,540	68.3	1,510	67.2
25–34 years	400	165.2	430	176.6	4,030	169.6	3,880	162.1	4,690	164.0	4,470	155.5
35–44 years	650	274.7	740	321.7	7,570	330.0	7,320	328.4	8,960	325.1	8,850	330.8
45–54 years	890	582.2	840	579.7	9,310	634.1	8,990	644.1	11,020	627.2	10,870	650.5
55–64 years	1,530	1,491.3	1,490	1,483.0	14,230	1,423.4	13,380	1,364.1	16,940	1,411.7	16,030	1,363.1
65–74 years	2,120	2,641.4	2,440	3,053.0	22,660	2,889.0	22,110	2,832.4	26,990	2,868.2	26,850	2,865.5
75–84 years	2,590	5,753.8	2,470	5,476.9	25,700	5,863.7	25,620	5,842.1	30,360	5,782.9	30,430	5,774.2
85 years and over.	2,040	12,131.0	2,210	14,701.1	20,970	12,935.6	20,800	14,228.8	24,870	12,819.6	24,840	14,275.9
Not stated	–	...	–	...	90	...	60	...	120	...	90	...
Age-adjusted rate ³	547.3	...	571.7	...	582.0	...	576.8	...	576.3	...	577.3

... Category not applicable.

– Quantity zero.

* Figure does not meet standards of reliability or precision (see Technical notes).

¹Includes races other than white and black.

²Death rates "Under 1 year" (based on population estimates) differ from infant mortality rates (based on live births); see table 9 for infant mortality rates.

³For method of computation, see Technical notes.

NOTES: Figures include all revisions received from the States. Cumulative and 12-month figures for the current year reflect revisions received for previous months, and figures for earlier years may differ from those previously published. Data include adjustments for District of Columbia, Hawaii, and New Jersey, which are not included in the sample for October 1995.

Table 6. Provisional number of deaths and death rates for 72 selected causes and Human immunodeficiency virus infection: United States, October 1994 and 1995, cumulative figures 1994 and 1995, and 12 months ending with October 1994 and 1995

[Data are provisional, estimated from a 10-percent sample of deaths. Rates on an annual basis per 100,000 estimated population. Because of rounding of estimates, figures may not add to totals. For method of computation and information on standard errors of the estimates, see Technical notes. For explanation of asterisks preceding cause-of-death categories, see Technical notes]

Cause of death (Ninth Revision, International Classification of Diseases, 1975)	October		January–October				12 months ending with October					
	1995		1994		1995		1994		1995		1994	
	Number	Rate	Number	Rate	Number	Rate	Number	Rate	Number	Rate	Number	Rate
All causes	190,000	847.9	190,000	857.8	1,924,000	880.3	1,914,000	882.9	2,296,000	875.1	2,296,000	882.4
Shigellosis and amebiasis004,006	—	*	—	*	—	*	10	*	—	*	10	*
Certain other intestinal infections.007–009	60	*	10	*	560	0.2	650	0.3	660	0.3	770	0.3
Tuberculosis010–018	90	*	110	0.5	1,120	0.5	1,240	0.6	1,330	0.5	1,400	0.5
Tuberculosis of respiratory system010–012	90	*	70	*	870	0.4	930	0.4	1,030	0.4	1,070	0.4
Other tuberculosis013–018	—	*	40	*	250	0.1	310	0.1	300	0.1	330	0.1
Whooping cough.033	10	*	—	*	10	*	20	*	10	*	20	*
Streptococcal sore throat, scarlatina, and erysipelas.034–035	—	*	—	*	10	*	—	*	10	*	—	*
Meningococcal infection036	—	*	10	*	280	0.1	240	0.1	340	0.1	280	0.1
Septicemia038	1,770	7.9	1,560	7.0	17,810	8.1	16,770	7.7	20,930	8.0	20,530	7.9
Acute poliomyelitis.045	—	*	—	*	—	*	—	*	—	*	—	*
Measles055	—	*	—	*	—	*	10	*	—	*	10	*
Viral hepatitis.070	290	1.3	250	1.1	2,900	1.3	2,290	1.1	3,430	1.3	2,730	1.0
Syphilis090–097	10	*	—	*	130	0.1	90	*	140	0.1	100	*
All other infectious and parasitic diseases ¹001–003,005,020–032,037,039–041,*042–*044,046–054,056–066,071–088,098–139	3,970	17.7	3,870	17.4	41,320	18.9	38,850	17.9	49,250	18.8	46,770	18.0
Malignant neoplasms, including neoplasms of lymphatic and hematopoietic tissues140–208	45,800	204.7	46,790	210.7	448,830	205.3	450,280	207.6	537,110	204.7	539,420	207.3
Malignant neoplasms of lip, oral cavity, and pharynx140–149	590	2.6	650	2.9	6,650	3.0	6,490	3.0	7,910	3.0	8,090	3.1
Malignant neoplasms of digestive organs and peritoneum150–159	10,870	48.6	10,730	48.3	104,740	47.9	105,870	48.8	125,790	47.9	126,680	48.7
Malignant neoplasms of respiratory and intrathoracic organs160–165	13,150	58.8	13,140	59.2	129,380	59.2	128,750	59.4	154,610	58.9	154,620	59.4
Malignant neoplasm of breast174–175	3,830	17.1	3,890	17.5	36,860	16.9	36,790	17.0	44,180	16.8	43,970	16.9
Malignant neoplasms of genital organs179–187	5,230	23.4	5,460	24.6	51,020	23.3	52,020	24.0	60,950	23.2	62,040	23.8
Malignant neoplasms of urinary organs188–189	1,830	8.2	1,930	8.7	19,360	8.9	18,490	8.5	22,800	8.7	22,510	8.7
Malignant neoplasms of all other and unspecified sites.170–173,190–199	5,560	24.8	5,920	26.7	55,140	25.2	56,420	26.0	66,210	25.2	67,940	26.1
Leukemia.204–208	1,480	6.6	1,820	8.2	16,430	7.5	16,980	7.8	19,430	7.4	20,040	7.7
Other malignant neoplasms of lymphatic and hematopoietic tissues.200–203	3,260	14.6	3,240	14.6	29,250	13.4	28,480	13.1	35,220	13.4	33,530	12.9
Benign neoplasms, carcinoma in situ, and neoplasms of uncertain behavior and of unspecified nature210–239	690	3.1	600	2.7	7,120	3.2	6,480	3.0	8,320	3.2	7,940	3.1
Diabetes mellitus250	4,880	21.8	4,780	21.5	48,990	22.4	46,020	21.2	58,250	22.2	55,540	21.3
Nutritional deficiencies260–269	330	1.5	270	1.2	3,090	1.4	2,680	1.2	3,610	1.4	3,220	1.2
Anemias280–285	330	1.5	350	1.6	3,430	1.6	3,440	1.6	4,140	1.6	4,220	1.6
Meningitis320–322	30	*	100	*	680	0.3	750	0.3	870	0.3	910	0.3
Major cardiovascular diseases390–448	76,180	340.5	77,050	347.0	784,290	358.8	788,050	363.5	935,420	356.5	945,740	363.5
Diseases of heart390–398,402,404–429	59,140	264.3	59,810	269.4	608,750	278.5	613,770	283.1	725,710	276.6	737,680	283.5
Rheumatic fever and rheumatic heart disease.390–398	300	1.3	510	2.3	4,300	2.0	4,750	2.2	5,060	1.9	5,720	2.2
Hypertensive heart disease402	1,970	8.8	1,730	7.8	20,430	9.3	20,120	9.3	24,100	9.2	23,430	9.0
Hypertensive heart and renal disease404	180	0.8	200	0.9	1,900	0.9	1,730	0.8	2,370	0.9	2,140	0.8
Ischemic heart disease410–414	38,270	171.0	39,550	178.1	397,480	181.8	405,870	187.2	473,750	180.6	487,940	187.5
Acute myocardial infarction410	17,510	78.3	18,590	83.7	181,330	83.0	189,120	87.2	217,330	82.8	227,600	87.5
Other acute and subacute forms of ischemic heart disease411	180	0.8	210	0.9	2,100	1.0	2,200	1.0	2,590	1.0	2,670	1.0
Angina pectoris413	50	*	90	*	590	0.3	770	0.3	720	0.3	960	0.4
Old myocardial infarction and other forms of chronic ischemic heart disease412,414	20,520	91.7	20,660	93.1	213,460	97.6	213,790	98.6	253,100	96.5	256,710	98.7
Other diseases of endocardium424	1,390	6.2	1,170	5.3	12,940	5.9	11,990	5.5	15,450	5.9	14,660	5.6
All other forms of heart disease415–423,425–429	17,030	76.1	16,660	75.0	171,690	78.5	169,310	78.1	204,980	78.1	203,800	78.3
Hypertension with or without renal disease401,403	1,000	4.5	850	3.8	10,450	4.8	8,990	4.1	12,220	4.7	10,750	4.1
Cerebrovascular diseases430–438	12,580	56.2	12,850	57.9	130,120	59.5	128,550	59.3	155,500	59.3	153,400	59.0
Intracerebral and other intracranial hemorrhage.431–432	1,500	6.7	1,960	8.8	17,770	8.1	17,480	8.0	21,400	8.2	20,850	8.0
Cerebral thrombosis and unspecified occlusion of cerebral arteries.434,0,434,9	1,130	5.0	1,230	5.5	11,180	5.1	12,610	5.8	13,560	5.2	15,220	5.8
Cerebral embolism434.1	110	0.5	70	*	550	0.2	800	0.4	670	0.3	880	0.3

See footnotes at end of table.

Table 6. Provisional number of deaths and death rates for 72 selected causes and Human immunodeficiency virus infection: United States, October 1994 and 1995, cumulative figures 1994 and 1995, and 12 months ending with October 1994 and 1995—Con.

[Data are provisional, estimated from a 10-percent sample of deaths. Rates on an annual basis per 100,000 estimated population. Because of rounding of estimates, figures may not add to totals. For method of computation and information on standard errors of the estimates, see Technical notes. For explanation of asterisks preceding cause-of-death categories, see Technical notes]

Cause of death (Ninth Revision, International Classification of Diseases, 1975)	October		January–October				12 months ending with October					
	1995		1994		1995		1994		1995		1994	
	Number	Rate	Number	Rate	Number	Rate	Number	Rate	Number	Rate	Number	Rate
All other and late effects of cerebrovascular diseases430,433,435–438	9,850	44.0	9,590	43.2	100,610	46.0	97,670	45.0	119,870	45.7	116,440	44.7
Atherosclerosis440	1,100	4.9	1,360	6.1	13,360	6.1	14,620	6.7	16,150	6.2	17,350	6.7
Other diseases of arteries, arterioles, and capillaries441–448	2,360	10.5	2,180	9.8	21,620	9.9	22,110	10.2	25,840	9.8	26,560	10.2
Acute bronchitis and bronchiolitis466	10	*	40	*	460	0.2	490	0.2	500	0.2	560	0.2
Pneumonia and influenza480–487	5,760	25.7	5,660	25.5	66,430	30.4	69,420	32.0	78,830	30.0	82,770	31.8
Pneumonia480–486	5,750	25.7	5,650	25.4	66,010	30.2	68,170	31.4	78,410	29.9	81,310	31.2
Influenza487	10	*	10	*	420	0.2	1,250	0.6	420	0.2	1,460	0.6
Chronic obstructive pulmonary diseases and allied conditions490–496	7,970	35.6	8,090	36.4	87,670	40.1	85,820	39.6	103,020	39.3	102,480	39.4
Bronchitis, chronic and unspecified490–491	230	1.0	310	1.4	2,520	1.1	3,060	1.4	3,060	1.2	3,700	1.4
Emphysema492	1,430	6.4	1,400	6.3	14,910	6.8	14,530	6.7	17,600	6.7	17,340	6.7
Asthma493	340	1.5	450	2.0	4,580	2.1	4,510	2.1	5,290	2.0	5,310	2.0
Other chronic obstructive pulmonary diseases and allied conditions494–496	5,970	26.7	5,920	26.7	65,660	30.0	63,710	29.4	77,070	29.4	76,130	29.3
Ulcer of stomach and duodenum531–533	570	2.5	450	2.0	5,050	2.3	5,190	2.4	5,880	2.2	5,980	2.3
Appendicitis540–543	30	*	50	*	360	0.2	270	0.1	410	0.2	330	0.1
Hernia of abdominal cavity and intestinal obstruction without mention of hernia550–553,560	340	1.5	430	1.9	5,040	2.3	4,910	2.3	6,090	2.3	5,910	2.3
Chronic liver disease and cirrhosis571	2,050	9.2	2,070	9.3	21,160	9.7	21,030	9.7	25,790	9.8	25,580	9.8
Cholelithiasis and other disorders of gallbladder574–575	210	0.9	160	0.7	2,210	1.0	2,200	1.0	2,610	1.0	2,600	1.0
Nephritis and nephrotic syndrome, and nephrosis580–589	2,000	8.9	2,070	9.3	21,330	9.7	20,160	9.3	25,860	9.9	23,920	9.2
Acute glomerulonephritis and nephrotic syndrome580–581	10	*	20	*	230	0.1	230	0.1	240	0.1	300	0.1
Chronic glomerulonephritis, nephritis and nephropathy, not specified as acute or chronic, and renal sclerosis, unspecified582–583,587	130	0.6	120	0.5	1,030	0.5	1,260	0.6	1,370	0.5	1,460	0.6
Renal failure, disorders resulting from impaired renal function, and small kidney of unknown cause584–586,588–589	1,860	8.3	1,940	8.7	20,070	9.2	18,670	8.6	24,240	9.2	22,160	8.5
Infections of kidney590	40	*	110	0.5	660	0.3	900	0.4	790	0.3	1,080	0.4
Hyperplasia of prostate600	50	*	70	*	380	0.2	320	0.1	460	0.2	400	0.2
Complications of pregnancy, childbirth, and the puerperium630–676	20	*	30	*	250	0.1	310	0.1	280	0.1	380	0.1
Pregnancy with abortive outcome630–638	–	*	–	*	10	*	60	*	10	*	70	*
Other complications of pregnancy, childbirth, and the puerperium640–676	20	*	30	*	240	0.1	250	0.1	270	0.1	310	0.1
Congenital anomalies740–759	1,100	4.9	1,030	4.6	9,510	4.3	9,520	4.4	11,560	4.4	11,390	4.4
Certain conditions originating in the perinatal period760–779	1,100	4.9	1,180	5.3	11,350	5.2	11,890	5.5	13,640	5.2	14,570	5.6
Birth trauma, intrauterine hypoxia, birth asphyxia, and respiratory distress syndrome767–769	190	0.8	170	0.8	1,670	0.8	2,020	0.9	2,040	0.8	2,550	1.0
Other conditions originating in the perinatal period760–766,770–779	910	4.1	1,020	4.6	9,680	4.4	9,870	4.6	11,600	4.4	12,030	4.6
Symptoms, signs, and ill-defined conditions780–799	3,530	15.8	3,830	17.2	34,730	15.9	34,090	15.7	40,880	15.6	40,670	15.6
All other diseasesResidual	17,450	78.0	17,230	77.6	176,280	80.6	169,380	78.1	210,370	80.2	203,330	78.1
Accidents and adverse effectsE800–E949	8,340	37.3	7,540	34.0	75,000	34.3	73,840	34.1	89,540	34.1	88,520	34.0
Motor vehicle accidentsE810–E825	4,560	20.4	3,870	17.4	36,540	16.7	34,940	16.1	43,640	16.6	42,310	16.3
All other accidents and adverse effectsE800–E807,E826–E949	3,770	16.8	3,670	16.5	38,470	17.6	38,900	17.9	45,900	17.5	46,210	17.8
SuicideE950–E959	2,500	11.2	2,500	11.3	25,340	11.6	25,290	11.7	30,630	11.7	30,410	11.7
Homicide and legal interventionE960–E978	1,930	8.6	1,980	8.9	18,540	8.5	19,880	9.2	22,350	8.5	23,900	9.2
All other external causesE980–E999	260	1.2	170	0.8	2,000	0.9	1,910	0.9	2,530	1.0	2,260	0.9
Human immunodeficiency virus infection ²*042–*044	3,450	15.4	3,420	15.4	35,700	16.3	33,350	15.4	42,660	16.3	40,110	15.4

– Quantity zero.

* Figure does not meet standards of reliability or precision (see Technical notes).

¹Includes data for deaths due to Human immunodeficiency virus infection (categories *042–*044) shown separately below; see Technical notes.

²Included in All other infectious and parasitic diseases shown above.

NOTES: Figures include all revisions received from the States. Cumulative and 12-month figures for the current year reflect revisions received for previous months, and figures for earlier years may differ from those previously published. Data include adjustments for District of Columbia, Hawaii, and New Jersey, which are not included in the sample for October 1995.

Table 7. Provisional number of deaths and death rates for 16 selected subcategories of Malignant neoplasms, including neoplasms of lymphatic and hematopoietic tissues: United States, October 1994 and 1995, cumulative figures 1994 and 1995, and 12 months ending with October 1994 and 1995

[Data are provisional, estimated from a 10-percent sample of deaths. Rates on an annual basis per 100,000 estimated population. Because of rounding of estimates, figures may not add to totals. For method of computation and information on standard errors of the estimates, see Technical notes]

Cause of death (Ninth Revision, International Classification of Diseases, 1975)	October				January–October				12 months ending with October			
	1995		1994		1995		1994		1995		1994	
	Number	Rate	Number	Rate	Number	Rate	Number	Rate	Number	Rate	Number	Rate
Malignant neoplasms, including neoplasms of lymphatic and hematopoietic tissues ¹140–208	45,800	204.7	46,790	210.7	448,830	205.3	450,280	207.6	537,110	204.7	539,420	207.3
Malignant neoplasm of esophagus150	840	3.7	880	4.0	8,780	4.0	9,540	4.4	10,410	4.0	11,370	4.4
Malignant neoplasm of stomach151	1,060	4.7	1,090	4.9	11,630	5.3	11,250	5.2	14,000	5.3	13,460	5.2
Malignant neoplasms of colon, rectum, rectosigmoid junction, and anus153,154	4,870	21.8	4,800	21.6	46,760	21.4	48,720	22.5	56,680	21.6	58,540	22.5
Malignant neoplasm of pancreas157	2,570	11.5	2,290	10.3	23,000	10.5	22,300	10.3	27,450	10.5	26,450	10.2
Malignant neoplasms of trachea, bronchus, and lung162	12,720	56.8	12,670	57.1	125,000	57.2	124,430	57.4	149,280	56.9	149,530	57.5
Malignant melanoma of skin172	590	2.6	600	2.7	6,010	2.7	6,100	2.8	7,040	2.7	7,510	2.9
Malignant neoplasm of cervix uteri180	430	1.9	280	1.3	3,910	1.8	3,820	1.8	4,680	1.8	4,690	1.8
Malignant neoplasms of body of uterus and of uterus, part unspecified179,182	550	2.4	480	2.2	5,010	2.3	4,950	2.3	5,940	2.3	5,910	2.3
Malignant neoplasm of ovary183.0	1,340	6.0	1,350	6.1	11,420	5.2	11,500	5.3	13,600	5.2	13,460	5.2
Malignant neoplasm of prostate185	2,780	12.4	3,120	14.0	29,260	13.4	29,970	13.8	35,020	13.3	35,810	13.8
Malignant neoplasm of bladder188	910	4.1	950	4.3	9,640	4.4	9,100	4.2	11,190	4.3	11,030	4.2
Malignant neoplasms of kidney and other and unspecified urinary organs189	910	4.1	980	4.4	9,720	4.4	9,390	4.3	11,610	4.4	11,480	4.4
Malignant neoplasms of brain and other and unspecified parts of nervous system191,192	1,020	4.6	1,130	5.1	9,600	4.4	10,040	4.6	11,700	4.5	11,790	4.5
Hodgkin's disease201	130	0.6	160	0.7	1,300	0.6	1,280	0.6	1,540	0.6	1,480	0.6
Malignant lymphoma other than Hodgkin's disease200,202	2,190	9.8	2,100	9.5	19,280	8.8	18,700	8.6	23,130	8.8	21,970	8.4
Multiple myeloma and other immunoproliferative neoplasms203	940	4.2	980	4.4	8,670	4.0	8,500	3.9	10,550	4.0	10,080	3.9

¹Includes figures for subcategories not shown below.

NOTES: Figures include all revisions received from the States. Cumulative and 12-month figures for the current year reflect revisions received for previous months, and figures for earlier years may differ from those previously published. Data include adjustments for District of Columbia, Hawaii, and New Jersey, which are not included in the sample for October 1995.

Table 8. Provisional number of deaths and death rates for Injury by firearms: United States, October 1994 and 1995, cumulative figures 1994 and 1995, and 12 months ending with October 1994 and 1995

[Data are provisional, estimated from a 10-percent sample of deaths. Rates on an annual basis per 100,000 estimated population. Because of rounding of estimates, figures may not add to totals. For method of computation and information on standard errors of the estimates, see Technical notes]

Cause of death (Ninth Revision, International Classification of Diseases, 1975)	October				January–October				12 months ending with October			
	1995		1994		1995		1994		1995		1994	
	Number	Rate	Number	Rate	Number	Rate	Number	Rate	Number	Rate	Number	Rate
Injury by firearmsE922,E955.0–E955.4,E965.0–965.4,E970,E985.0–E985.4	3,040	13.6	3,220	14.5	29,440	13.5	31,850	14.7	35,940	13.7	38,670	14.9
Accident caused by firearm missileE922	160	0.7	100	*	1,030	0.5	1,150	0.5	1,420	0.5	1,490	0.6
Suicide by firearmsE955.0–E955.4	1,470	6.6	1,610	7.2	15,180	6.9	16,120	7.4	18,440	7.0	19,480	7.5
Homicide and legal intervention by firearmsE965.0–E965.4,E970	1,370	6.1	1,490	6.7	13,000	5.9	14,360	6.6	15,790	6.0	17,420	6.7
Injury by firearms, undetermined whether accidentally or purposely inflictedE985.0–E985.4	40	*	20	*	220	0.1	220	0.1	290	0.1	270	0.1

* Figure does not meet standards of reliability or precision (see Technical notes).

NOTES: Figures include all revisions received from the States. Cumulative and 12-month figures for the current year reflect revisions received for previous months, and figures for earlier years may differ from those previously published. Data include adjustments for District of Columbia, Hawaii, and New Jersey, which are not included in the sample for October 1995.

Table 9. Provisional number of deaths under 1 year and infant mortality rates, by age and for 10 selected causes: United States, October 1994 and 1995, cumulative figures 1994 and 1995, and 12 months ending with October 1994 and 1995

[Data are provisional, estimated from a 10-percent sample of deaths. Rates on an annual basis per 100,000 live births. Because of rounding of estimates, figures may not add to totals. For method of computation and information on standard errors of the estimates, see Technical notes]

Age and cause of death (Ninth Revision, International Classification of Diseases, 1975)	October				January–October				12 months ending with October			
	1995		1994		1995		1994		1995		1994	
	Number	Rate	Number	Rate	Number	Rate	Number	Rate	Number	Rate	Number	Rate
Total, under 1 year	2,500	737.2	2,600	766.7	24,500	749.6	26,400	792.8	29,500	757.5	31,800	801.4
Under 28 days	1,640	491.8	1,690	492.8	15,720	480.3	16,500	495.8	18,860	483.6	20,140	507.2
28 days–11 months	820	245.9	940	274.1	8,780	268.3	9,880	296.9	10,640	272.8	11,680	294.1
Certain gastrointestinal diseases008–009,535,555–558	–	*	10	*	160	4.9	220	6.6	190	4.9	250	6.3
Pneumonia and influenza480–487	30	*	10	*	280	8.6	380	11.4	350	9.0	410	10.3
Congenital anomalies740–759	620	185.9	580	169.1	5,220	159.5	5,610	168.6	6,380	163.6	6,660	167.7
Disorders relating to short gestation and unspecified low birthweight765	250	75.0	300	87.5	3,150	96.2	3,270	98.3	3,740	95.9	3,890	98.0
Birth trauma767	40	*	20	5.8	140	4.3	200	6.0	160	4.1	200	5.0
Intrauterine hypoxia and birth asphyxia768	20	*	30	*	390	11.9	440	13.2	510	13.1	560	14.1
Respiratory distress syndrome769	120	36.0	110	32.1	1,060	32.4	1,340	40.3	1,290	33.1	1,740	43.8
Other conditions originating in the perinatal period760–764,766,770–779	650	194.9	710	207.0	6,420	196.2	6,450	193.8	7,690	197.2	7,940	199.9
Sudden infant death syndrome798.0	180	54.0	370	107.9	2,370	72.4	3,070	92.3	2,910	74.6	3,750	94.4
All other causesResidual	540	161.9	480	140.0	5,300	161.9	5,410	162.6	6,280	161.0	6,430	161.9

– Quantity zero.

* Figure does not meet standards of reliability or precision (see Technical notes).

NOTES: Figures include all revisions received from the States. Cumulative and 12-month figures for the current year reflect revisions received for previous months, and figures for earlier years may differ from those previously published. Data include adjustments for District of Columbia, Hawaii, and New Jersey, which are not included in the sample for October 1995.

Technical notes

Nature and sources of data

Data in this report are provisional unless otherwise specified and include only events occurring within the United States (50 States and the District of Columbia). Mortality data exclude fetal deaths. Data for the Commonwealth of Puerto Rico are not included in the U.S. totals.

Birth, death, and infant death figures in tables 2 and 4 for each State are estimates by State of residence. These estimates are derived by applying adjustment ratios to the actual counts of certificates for all events occurring in the State and received in registration offices during a 1-month period regardless of date of the event. The adjustment ratios for each data year represent the observed relationship between final State occurrence and residence figures for the three most recent years for which final data were available and are expressed as a single ratio for each State. As in previous years, monthly State marriage and divorce figures represent the actual count of all events occurring in the State (State of occurrence) that were received in the registration offices during the 1-month period. Delay in the receipt of certificates in a registration office may result in a low State figure for a given month followed by a high figure for the month(s) in which the delayed records are received. Data for previous months and cumulative data include revised figures received from the States.

Figures for births, deaths, and infant deaths for California in tables 2 and 4 contain adjustments for varying lengths of State reporting periods. Figures for Texas for all events shown in tables 2–4 also are adjusted for varying lengths of State reporting periods. The figures for both States are adjusted by the ratio between the number of days in the data month and the number of days in the State reporting period. The adjusted figures are included in the U.S. totals shown elsewhere in this report.

U.S. totals for births, deaths, and infant deaths are based on the State estimates by State of residence and, therefore, in effect, exclude events to nonresidents of the United States. Events to nonresidents of the United States are

included in all marriage and divorce figures. The effect of excluding events to nonresidents from the U.S. totals is small.

Provisional totals for the United States include estimates for State data shown as not available. Provisional totals for births and marriages for the entire United States include adjustments for observed differences between provisional and final monthly figures.

Divorce figures include reported annulments. The monthly national divorce estimate is obtained by multiplying the total for the reporting areas by the ratio observed between the most recent final annual divorce total for the United States and the provisional total for the reporting areas combined.

Random variation—Although the counts in this report are not subject to sampling variability (except the Current Mortality Sample), they may be affected by random variation. When the number of events is small and the probability of such an event is small, considerable caution must be observed in interpreting the data. Such infrequent events may be assumed to follow a Poisson probability distribution. For this distribution a simple approximation may be used to estimate the random variation as follows:

If N is the number of events in the population and R is the corresponding rate, the chances are 19 in 20 that

$$1. N - 2\sqrt{N} \text{ and } N + 2\sqrt{N}$$

covers the “true” number of events.

$$2. R - 2 \frac{R}{\sqrt{N}} \text{ and } R + 2 \frac{R}{\sqrt{N}}$$

covers the “true” rate.

If the rate R_1 corresponding to N_1 events is compared with the rate R_2 corresponding to N_2 events, the difference between the two rates may be regarded as statistically significant at the 0.05 level if it exceeds

$$2 \sqrt{\frac{R_1^2}{N_1} + \frac{R_2^2}{N_2}}$$

Additional information on random variation in numbers of events, rates, and ratios may be found in the technical appendixes of *Vital Statistics of the United States, 1990, Volumes I and II*.

Rates

Rates are on an annual basis and, except for infant mortality rates, are per 1,000 or 100,000 estimated population residing in the United States. The populations used for computing these rates are furnished by the U.S. Bureau of the Census. Rates shown in this report beginning with 1992 were computed using populations based on the 1990 Census enumeration comparable to those used for final data. Monthly rates are based on populations estimated for the specific month. Year-to-date rates are averages of monthly rates that have been weighted by the number of days in the corresponding months. Rates for 12-month periods are the sum of events for the period per population estimated at the midpoint of the period.

Infant mortality rates are deaths under 1 year of age for the specified period (monthly, year-to-date, or 12-month period) per 1,000 or 100,000 live births. Births used for computing monthly and year-to-date infant mortality rates are adjusted for monthly variation in the number of births. Births used to compute 12-month rates do not contain this adjustment. Births used for computing infant mortality rates are not corrected for observed differences between provisional and final monthly figures as described earlier in “Nature and sources of data.” Because monthly infant mortality rates are based on relatively few events, they are highly variable. Therefore, comparisons of monthly infant mortality rates should be interpreted cautiously; see “Random variation.”

Age-adjusted death rates are used to compare relative mortality risks across groups and over time. However, they should be viewed as constructs or indexes rather than as direct or actual measures of mortality risk. Statistically, they are weighted averages of the age-specific death rates, where the weights represent the fixed population proportions by age. See chapter 5 of an earlier report (1). The age-adjusted death rates presented in this report were computed by the direct method, that is, by applying age-specific death rates to the U.S. standard million population (2). See also chapter 10 of an earlier report (1). Age groups in table 5 were used to compute the age-adjusted

rates shown in that table. It is important not to compare age-adjusted rates with crude rates.

Current Mortality Sample

The Current Mortality Sample (CMS) is a 10-percent systematic sample of death certificates drawn each month after the certificates are counted in the State registration offices. Deaths and death rates for the United States by age, race, sex, and cause are estimated based on the sample. Because of the additional time required to select and process the certificates, data based on the CMS are published 1 month after publication of the U.S. and State counts. Complete information concerning the underlying cause of death sometimes is not available when the sample is drawn. As a result estimates based on sample counts for certain causes are biased. Correction for bias is not made in this report.

Estimated numbers of deaths based on the sample were proportionately adjusted to be consistent with estimates based on the count of death certificates received in State registration offices.

HIV infection—Beginning with data for 1987, the National Center for Health Statistics introduced categories *042–*044 for classifying and coding Human immunodeficiency virus (HIV) infection. The asterisks before the categories indicate that these codes are not part of the

Ninth Revision, International Classification of Diseases. Deaths classified to these categories are included in All other infectious and parasitic diseases in the List of 72 Selected Causes of Death and are also shown separately at the bottom of table 6.

Sampling variability—Because the estimates of deaths and death rates presented in this report with the exception of total deaths and deaths under 1 year are based on a sample of death certificates, they are subject to sampling variability. The estimated relative standard error in the following table is a measure of the

Relative standard errors for estimated numbers of deaths from the Current Mortality Sample expressed as a percent of the estimate

Estimated number of deaths	Relative standard error of estimate (as percent)	
	170,000 estimated deaths each month	2,000,000 estimated deaths each year
10	94.9	94.9
20	67.1	67.1
50	42.4	42.4
100	30.0	30.0
200	21.2	21.2
500	13.4	13.4
1,000	9.5	9.5
2,000	6.7	6.7
5,000	4.2	4.2
10,000	2.9	3.0
20,000	2.0	2.1
50,000	1.1	1.3
100,000	0.6	0.9
200,000	0.6
500,000	0.4
1,000,000	0.2

sampling error of the estimated number of deaths (or of the estimated death rate) expressed as a percent of the estimate. The first column refers to monthly estimates; the second to annual; cumulative year-to-date totals fall between the two.

The chances are about 2 in 3 that the percent difference between an estimate and the result of a complete count is less than the percent shown. The chances are about 19 in 20 that the percent difference is less than twice the percent shown. A figure based on 100 or fewer estimated deaths has a relative standard error of 30 percent or more and is, therefore, considered unreliable. A rate based on 100 or fewer estimated deaths has been replaced by an asterisk.

Unless otherwise specified comparisons made in the text between death rates based on the CMS were statistically significant at the 0.05 level of significance. Lack of comment in the text about any two rates does not mean that the difference was tested and found not to be significant at this level.

References

1. Feinleib M, Zarate AO, eds. Reconsidering age adjustment procedures: Workshop proceedings. National Center for Health Statistics. Vital Health Stat 4(29). 1992.
2. Grove RD, Hetzel AM. Vital statistics rates in the United States, 1940–1960. Public Health Service. Washington: National Center for Health Statistics. 1968.

Suggested citation

National Center for Health Statistics. Births, marriages, divorces, and deaths for November 1995. Monthly vital statistics report; vol 44 no 11. Hyattsville, Maryland: Public Health Service. 1996.

Copyright information

All material appearing in this report is in the public domain and may be reproduced or copied without permission; citation as to source, however, is appreciated.

National Center for Health Statistics

Acting Director
Jack R. Anderson

Acting Deputy Director
Jennifer H. Madans, Ph.D.

Division of Vital Statistics

Director
Mary Anne Freedman

**DEPARTMENT OF
HEALTH & HUMAN SERVICES**

Public Health Service
Centers for Disease Control and Prevention
National Center for Health Statistics
6525 Belcrest Road
Hyattsville, Maryland 20782

FIRST CLASS MAIL
POSTAGE & FEES PAID
PHS/NCHS
PERMIT NO. G-281

**OFFICIAL BUSINESS
PENALTY FOR PRIVATE USE, \$300**

To receive this publication regularly, contact the National Center for Health Statistics by calling 301-436-8500
E-mail: nchsquery@nch10a.em.cdc.gov
Internet: <http://www.cdc.gov/nchswwww/nchshome.htm>

DHHS Publication No. (PHS) 96-1120
6-0393 (5/96)