



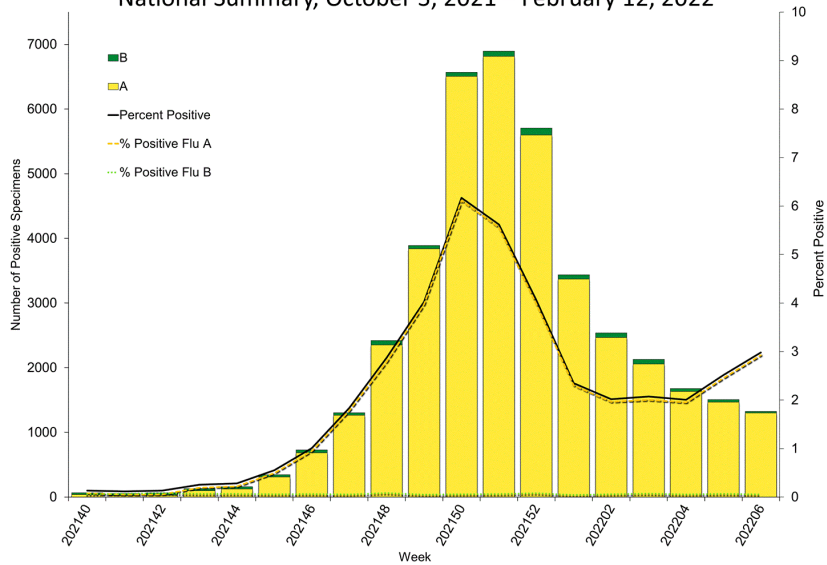
Influenza Activity Update

Lisa Grohskopf
Influenza Division, CDC

Advisory Committee on Immunization Practices
23 February 2022

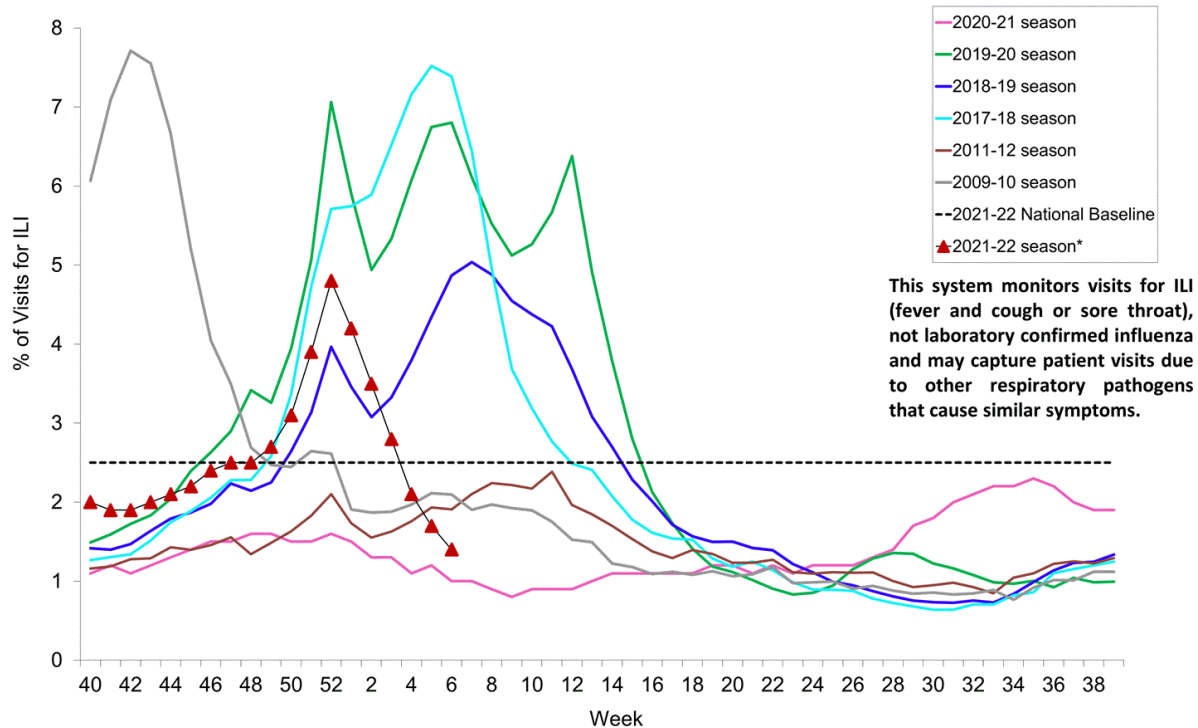
Virologic Surveillance

Influenza Positive Tests Reported to CDC by U.S. Clinical Laboratories, National Summary, October 3, 2021 – February 12, 2022



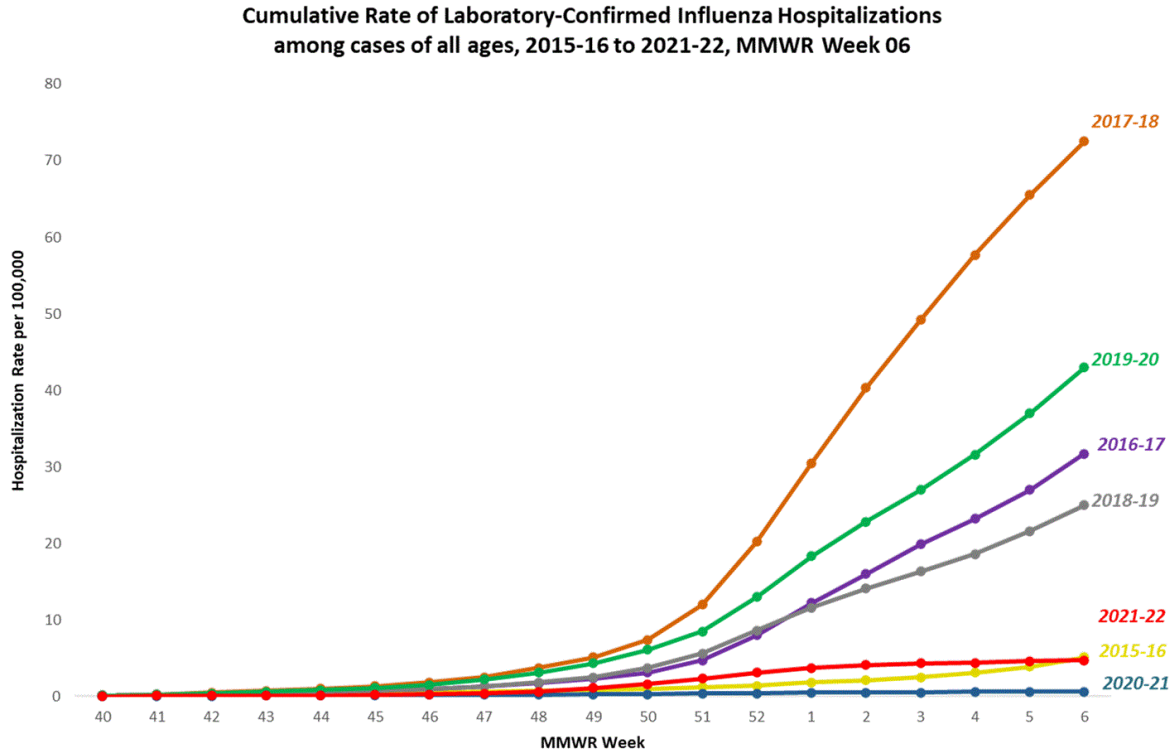
Influenza-like Illness Activity (ILINet)

Percentage of Outpatient Visits for Respiratory Illness Reported By The U.S. Outpatient Influenza-like Illness Surveillance Network (ILINet), Weekly National Summary, 2021-2022* and Selected Previous Seasons



This system monitors visits for ILI (fever and cough or sore throat), not laboratory confirmed influenza and may capture patient visits due to other respiratory pathogens that cause similar symptoms.

Influenza Hospitalizations (FluSurv-NET)

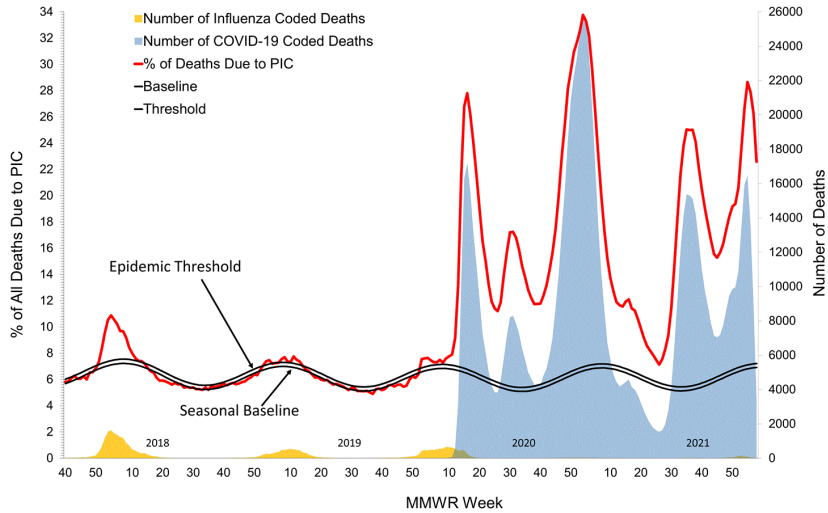


**In this figure, cumulative rates for all seasons prior to the 2021-22 season reflect end-of-season rates. For the 2021-22 season, rates for recent hospital admissions are subject to reporting delays. As hospitalization data are received each week, prior case counts and rates are updated accordingly.

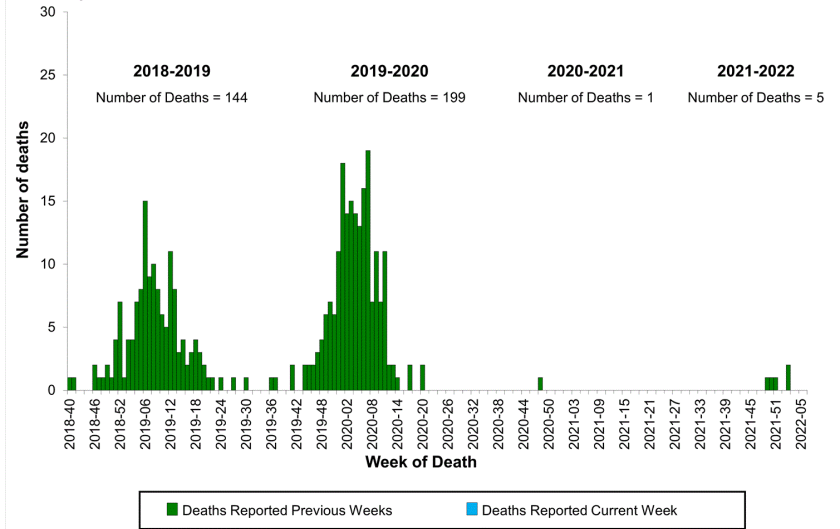
-T—do not circulate

Influenza Mortality

Pneumonia, Influenza, and COVID-19 Mortality from the National Center for Health Statistics Mortality Surveillance System
Data as of February 17, 2022



Influenza-Associated Pediatric Deaths by Week of Death, 2018-2019 season to 2021-2022 season



Recent U.S. Influenza Activity--Summary

As of Week 6 (the week ending February 12, 2022:

- 3.0% of specimens submitted to clinical laboratories are positive (after peaking at 6% in week 50 and declining to ~2.0% during week 2).
 - Most specimens that are subtyped are H3N2 viruses.
 - These viruses are thus far genetically closely related to the vaccine virus, but there are some antigenic differences that have developed as H3N2 viruses continue to evolve.
- Sporadic influenza activity continues throughout the country.
 - Influenza is increasing in some parts of the country.
- The cumulative hospitalization rate (FluSurv-NET) is higher than that for the entire 2020-21 season, but lower than that observed at this time during the four seasons preceding the COVID-19 pandemic.

For more information, contact CDC
1-800-CDC-INFO (232-4636)
TTY: 1-888-232-6348 www.cdc.gov

The findings and conclusions in this report are those of the authors and do not necessarily represent the official position of the Centers for Disease Control and Prevention.

