



Published in final edited form as:

*Am J Transplant.* 2022 February ; 22(2): 386–401. doi:10.1111/ajt.16882.

## Modulating Donor Mitochondrial Fusion/Fission Delivers Immunoprotective Effects in Cardiac Transplantation

Danh T. Tran<sup>1,3</sup>, Zhenxiao Tu<sup>1</sup>, Ali Alawieh<sup>1</sup>, Jennifer Mulligan<sup>2</sup>, Scott Esckilsen<sup>3</sup>, Kristen Quinn<sup>3</sup>, Kamala Sundararaj<sup>3</sup>, Caroline Wallace<sup>3</sup>, Ryan Finnegan<sup>3</sup>, Patterson Allen<sup>3</sup>, Shikhar Mehrotra<sup>3</sup>, Carl Atkinson<sup>1,3,4</sup>, Satish N. Nadig<sup>1,3,4</sup>

<sup>1</sup> Department of Microbiology & Immunology, Medical University of South Carolina, Charleston, SC.

<sup>2</sup> Department of Otolaryngology-Head & Neck Surgery, Medical University of South Carolina, Charleston, SC.

<sup>3</sup> Department of Surgery, Division of Transplant Surgery, Lee Patterson Allen Transplant Immunobiology Laboratory, Medical University of South Carolina, Charleston, SC.

<sup>4</sup> South Carolina Investigators in Transplantation, Department of Surgery, Medical University of South Carolina, Charleston, SC.

### Abstract

Early insults associated with cardiac transplantation increase the immunogenicity of donor microvascular endothelial cells (ECs), which interact with recipient alloreactive memory T-cells and promote responses leading to allograft rejection. Thus, modulating EC immunogenicity could potentially alter T-cell responses. Recent studies have shown modulating mitochondrial fusion/fission alters immune cell phenotype. Here, we assess whether modulating mitochondrial fusion/fission reduces EC immunogenicity and alters EC-T-cell interactions. By knocking down DRP1, a mitochondrial fission protein, or by using the small molecules M1, a fusion promoter, and Mdivi1, a fission inhibitor, we demonstrate that promoting mitochondrial fusion reduced EC immunogenicity to allogeneic CD8<sup>+</sup> T-cells, shown by decreased T-cell cytotoxic proteins, decreased EC VCAM-1, MHC-I expression, and increased PD-L1 expression. Co-cultured T-cells also displayed decreased memory frequencies and Ki-67 proliferative index. For *in-vivo* significance, we used a novel murine brain-dead donor transplant model. Balb/c hearts pretreated

---

**To whom correspondence should be addressed:** Satish N. Nadig, MD PhD, FACS, 96 Jonathan Lucas Street, MSC 613, CSB 409, Charleston, SC 29425, satish.nadig@northwestern.edu, Tel: (843) 792-3553, Fax: (843) 792-8596.

Disclosures

DTT, CA, and SNN are inventors of a filed patent on M1/Mdivi1 utilization in transplant models. The other authors have no conflict of interest to disclose as described by the *American Journal of Transplantation*.

Supporting Information Statement

Additional supporting information may be found online in the Supporting Information section at the end of the article, which includes:

- Expanded Materials and Methods
- Supplemental Figures 1–6
- Supplemental Table-1
- References 4, 31, 32, 35, 42, 59, 60, 61, 62, 57, 63–66

with M1/Mdivi1 after brain-death induction were heterotopically transplanted into C57BL/6 recipients. We demonstrate that, in line with our *in-vitro* studies, M1/Mdivi1 pretreatment protected cardiac allografts from injury, decreased infiltrating T-cell production of cytotoxic proteins, and prolonged allograft survival. Collectively, our data show promoting mitochondrial fusion in donor ECs mitigates recipient T-cell responses and leads to significantly improved cardiac transplant survival.

## 1- INTRODUCTION

Despite the steady advancement of cardiac transplantation, long-term survival has not significantly improved due to early factors in the transplant process.<sup>1-3</sup> Donor brain death (BD) activates multiple immunological components and predisposes a cardiac allograft to pro-inflammation.<sup>4-6</sup> Subsequently, cold storage (CS) and ischemia-reperfusion injury (IRI) further exacerbate the heightened immunogenicity of the allograft.<sup>7</sup> Sitting at the interface between the donor allograft and the recipient immune system are donor endothelial cells (ECs), which play a central role in an allograft's immunogenicity as semi-professional antigen-presenting cells.<sup>8</sup> Early injuries induced by brain death, CS, and IRI activate and prime these cells to be immunogenic. Upon allograft implantation and reperfusion, ECs interact with recipient circulating alloreactive memory T-cells ( $T_{\text{mems}}$ ) which subsequently infiltrate the cardiac allograft and mediate allograft rejection.<sup>9-15</sup>

Current standard-of-care immunosuppression prevents activation of naïve T-cells but has minimal impact on  $T_{\text{mems}}$ , and thus  $T_{\text{mems}}$  are a barrier to transplant tolerance.<sup>16-18</sup> Since  $T_{\text{mems}}$  interact directly with ECs,<sup>11</sup> modulating the immunogenicity of donor ECs early in the transplant process could potentially reduce alloreactive  $T_{\text{mems}}$  responses. Also, treating a cardiac allograft prior to recipient implantation could potentially minimize side effects in the recipient.

Several studies have shown an important link between mitochondrial dysregulation and allograft rejection.<sup>19-26</sup> Mitochondrial fusion/fission plays an important role in regulating mitochondrial fitness and cellular health. Fusion is mediated by several key machinery proteins, including mitofusin-1, mitofusin-2, and optic atrophy-1. Fission, on the other hand, is mediated by dynamin-related protein 1 (DRP1) and other accessory proteins.<sup>27, 28</sup> In transplantation, CS-IRI affects expression and processing of fusion/fission machinery proteins, leading to mitochondrial injury and impaired graft function.<sup>29</sup> However, whether these alterations in donor graft mitochondrial fusion/fission has an impact on immunological outcomes remains unknown.

In non-transplant settings, mitochondrial fusion/fission has been shown to regulate immune cell phenotype, including dendritic cell differentiation and migration,<sup>30</sup> and effector-memory functional transformation in T-cells.<sup>31</sup> Yet, whether mitochondrial fusion/fission regulates the immunological phenotype of ECs has not been reported. Furthermore, in the heart, modulating mitochondrial fusion/fission exhibits protective effects against focal IRI. In myocardial infarction mouse models, inhibiting mitochondrial fission stabilizes the cardiac microvasculature, maintains an intact endothelial barrier, and protects mitochondrial membrane potentials of ECs.<sup>32-34</sup> Yet, whether inhibiting mitochondrial fission/promoting

mitochondrial fusion provides protection against injury in transplant has not been investigated.

We have previously shown that modulating mitochondrial bioenergetics in ECs reduces their immunogenicity and leads to a favorable T-cell response.<sup>35</sup> Based on these observations, we hypothesized that modulating mitochondrial fusion/fission in donor ECs will provide protection from IRI and promote an EC immunological phenotype that decreases  $T_{\text{mems}}$  responses. In the present study, using *in-vitro* and *in-vivo* models, we promote mitochondrial fusion/inhibit mitochondrial fission in donor ECs and assess the impact on EC-T-cell interactions and subsequent cardiac transplant outcomes.

## 2- MATERIALS AND METHODS

### Animals:

Male Balb/c and C57BL/6 mice, 8 to 12 weeks old (Jackson Laboratory, Bar Harbor, ME), were used for all co-culture and *in vivo* experiments. Mice were housed under conventional conditions at Medical University of South Carolina (MUSC, Charleston, SC). All procedures were performed accordingly to animal protocols approved by MUSC Committee for Animal Research in accordance with the NIH Guide for Care and Use of Laboratory Animals.

### Additional Materials and Methods:

Details regarding cell lines and culture media, pharmacologic agents, confocal imaging, antibodies for immunoblotting and flow cytometry, oxygen consumption assay, memory CD8<sup>+</sup> T-cells generation and EC-T-cell co-culture, cold storage and warm reperfusion model, normothermic activation model, live/dead cell staining and counting, brain-death induction and heterotopic heart transplantation, primary cell isolation, transmission electron microscopy, trans-endothelial electrical resistance assays, cardiac injury assessment, histological analysis, and statistical analysis can be found in the online Supporting Information.

## 3- RESULTS

### 3.1- Genetic Alteration of Mitochondrial Fission Machinery Reduces Cardiac Microvascular EC Immunogenicity

With previous reports indicating that inhibiting mitochondrial fission to promote fusion can modulate the immunological phenotypes of T-cells and mast cells,<sup>31, 36</sup> we reasoned that inhibiting mitochondrial fission in ECs would alter their immunogenicity. To determine the impact of mitochondrial fission inhibition in ECs, we generated DRP1 knock-down cells (DRP1KDs) by stably transfecting mouse microvascular cardiac endothelial cells (MCECs) with shRNAi plasmid, and subsequently maintained selection media. Fission machinery knock-down was validated by DRP1KD mitochondrial morphology imaging, which revealed significant elongation of the mitochondria as compared to wildtype MCECs (Figure-1A). Additionally, DRP1 levels in DRP1KDs were reduced compared to wildtype MCECs, as determined by Western blotting (Supplemental Figure-1). To determine what other impact DRP1 knock-down had on the mitochondria, we assessed mitochondrial mass of

DRP1KDs, with Mitotracker Green as previously described.<sup>37</sup> Inhibiting fission was known to increase mitochondrial mass in immune cells,<sup>31</sup> and consistent with this study, we found that DRP1KDs had a significantly increase in mitochondrial mass compared to wildtype MCECs (Figure-1B). To determine whether these mitochondrial structural changes affected function, we utilized Seahorse bioenergetic flux assays and demonstrated that mitochondrial fitness, represented by spare respiratory capacity, in DRP1KDs was significantly increased as compared to wildtype controls (Figure-1C).

We next sought to determine whether knocking down DRP1 altered EC immunogenicity, and specifically whether these changes altered EC-T-cell interactions. We utilized a previously reported EC-T-cell co-culture system in which T-cells were procured from mice that had been pre-sensitized to donor ECs, thus recapitulating the *in-vivo* scenario of pre-sensitized T<sub>mems</sub>.<sup>35, 38</sup> We have shown that co-cultures using T-cells from non-sensitized animals showed little to no alloreactivity (Supplemental Figure-2). Using this normothermic co-culture model with pre-sensitized allogeneic CD8<sup>+</sup> T-cells, in which DRP1KDs or wildtype MCECs were co-cultured with CD8<sup>+</sup> T-cells for 7 days, DRP1 knock-down was associated with a marked reduction in secreted IFN $\gamma$  and granzyme-B (Figure-1D). In the clinical setting, cold storage-ischemia reperfusion injury (CS-IRI) associated with cardiac hypothermic preservation exacerbates EC immunogenicity.<sup>7</sup> Thus, we subsequently examined whether an EC immunogenicity reduction would be similarly observed in the setting of hypothermic preservation. Using a clinically relevant CS-IRI model described previously,<sup>35</sup> we first assessed DRP1KD mitochondrial morphology at 1 hour post-reperfusion following CS in UW solution, and found mitochondrial morphology was unaltered by CS (Figure-1E). To dissect the impact of EC immunogenicity, after 6 hours of CS and upon reperfusion, DRP1KDs or wildtype MCECs were co-cultured with pre-sensitized allogeneic CD8<sup>+</sup> T-cells for 7 days, as described above. In keeping with our normothermic data, IFN $\gamma$  and granzyme-B were significantly reduced in DRP1KD vs wildtype MCEC co-cultures (Figure-1F).

### 3.2- Pharmacological Modulation of Mitochondrial Fusion/Fission Prior to Pro-inflammatory Cytokine Insult Reduces EC Immunogenicity

For clinical relevance, we determined whether pharmacological modulation of mitochondria in MCECs could recapitulate outcomes seen in DRP1KDs. Here, MCEC mitochondrial fusion was forced using M1, a mitochondrial fusion promoter, and Mdivi1, a mitochondrial fission inhibitor that blocks the self-assembly of DRP1. This combination has been reported to maximally skew mitochondrial fusion/fission toward fusion.<sup>31, 32</sup> When MCECs were treated with M1/Mdivi1 for 24 hours, mitochondria were significantly elongated compared to untreated controls, as determined by confocal microscopy analysis (Figure-2A). To similarly determine the impact of mitochondrial therapy on MCEC immunogenicity, we repeated the co-culture experiments with pre-sensitized allogeneic CD8<sup>+</sup> T-cells. In keeping with our DRP1KD data, secretion of IFN $\gamma$  and granzyme-B were significantly decreased in co-cultures where MCECs were pretreated with M1/Mdivi1 compared to untreated controls (Figure-2B).

In the clinical setting, IRI promotes the secretion of pro-inflammatory cytokines by innate immune cells, and within this pro-inflammatory microenvironment, ECs are activated to become immunogenic.<sup>39</sup> To investigate whether promoting fusion/inhibiting fission prior to such pro-inflammatory cytokine insult could prevent EC immunogenicity, we pretreated MCECs with M1/Mdivi1, activated them with TNF $\alpha$ /IFN $\gamma$ , and performed flow cytometry for EC surface markers (gating strategy and live/dead staining shown in Supplemental Figure-3A). While M1/Mdivi1 treatment induced no changes when cells were in their resting state, pre-treating cells with the mitochondrial drugs prior to TNF $\alpha$ /IFN $\gamma$  activation reduced surface expression of the adhesion molecules VCAM-1 and ICAM-1 compared to untreated controls (Figure-2C). Other EC activation and T-cell inhibition markers, including P-selectin, CD80, PD-L1 did not show any discernable differences following TNF $\alpha$ /IFN $\gamma$  activation. Given these basal data, we next determined whether T-cell co-culture altered EC activation markers after 4 days co-cultured with allogeneic CD8<sup>+</sup> T-cells. We found that PD-L1 was significantly up-regulated in the M1/Mdivi1-pretreated MCECs compared to the untreated controls (Figure-2C). Since PD-L1 inhibits T-cell function,<sup>40</sup> we investigated whether PD-L1 expression changes were responsible for the observed inhibition of T-cell activity. Using our co-culture model, M1/Mdivi1-pretreated MCECs were co-incubated with allogeneic CD8<sup>+</sup> T-cells in the presence of anti-PD-L1 blocking antibodies, which resulted in the previously observed effect being partially abrogated (Figure-2D).

### 3.3- Pharmacological Modulation of Mitochondrial Fusion/Fission Prior to Cold Storage Reduces EC Immunogenicity after Reperfusion

As M1/Mdivi1 pre-treatment reduced EC immunogenicity to allogeneic T-cells, we next investigated whether the same effects could be observed, for clinical translational relevance, in a CS-IRI setting. In this clinically relevant model, we pretreated MCECs with M1/Mdivi1 for 6 hours in warm culture media, withdrew the drugs, then subjected the cells to CS-IRI.<sup>35</sup> As a means of validation, at 1-hour post-reperfusion, we imaged MCEC mitochondria and found that mitochondria in M1/Mdivi1-pretreated cells retained an elongated morphology compared to CS controls (i.e. untreated cells undergoing CS-IRI) (Figure-3A). To assess immunogenicity, upon reperfusion, we co-incubated M1/Mdivi1-pretreated MCECs or untreated controls with pre-sensitized allogeneic CD8<sup>+</sup> T-cells for 7 days. At the end of the co-culture, we found the levels of secreted IFN $\gamma$  and granzyme-B were significantly reduced in pretreated cells compared to untreated controls (Figure-3B). Of note, IFN $\gamma$  and granzyme-B levels in the control groups in the more translationally relevant CS-IRI model were higher, as compared to those in the control groups of the normothermic cytokine-insult model. Yet, M1/Mdivi1 EC pretreatment still significantly reduced IFN $\gamma$  and granzyme-B secretion by T-cells to similar extents (Figure-2B, Figure-3B).

As promoting fusion/inhibiting fission with M1/Mdivi1 was observed to alter MCEC surface markers in the normothermic model, we sought to determine whether the same effects occurred in the CS-IRI model. Since we have previously shown that following CS-IRI, mitochondrial physiology and the associated immunological changes of ECs occur during the first 24 hours post-reperfusion,<sup>35</sup> we chose 6 and 24 hours post-reperfusion as our main focus. We performed flow cytometry on a panel of surface markers and the proliferative index Ki-67 (gating strategy and live/dead staining shown in Supplemental Figure-3A),

and found that at 6 hours post-reperfusion, VCAM-1, MHC-I, Ki-67 were significantly decreased, while PD-L1 was significant increased. These effects were more pronounced at 24 hours post-reperfusion, except that MHC-I levels returned to normal at this time point (Table-1) (Figure-3C to Figure-3F). There were no significant changes associated with other markers, including ICAM-1, P-selectin, CD80 (Table-1). Of note, M1/Mdivi1 pre-treatment did not impact MCEC viability, as shown by fluorescent cell counts with acridine orange/propidium iodide differential staining (Supplemental Figure-3B). We further delineated PD-L1 implication in our model with PD-L1 blockade experiments using the co-culture model described above in Figure-3B, in which following reperfusion we co-incubated pretreated MCECs and allogeneic CD8<sup>+</sup> T-cells in the presence of anti-PD-L1 antibodies. We found that PD-L1 blockade completely abrogated M1/Mdivi1 effects (Figure-3G). Given MCECs at baseline have some PD-L1 expression, and to control for any direct impact of PD-L1 blockade on EC-T cell interactions, we treated control MCECs in simulated cold storage-IRI model with PD-L1 blockade. As anticipated, we could not demonstrate any impact of PD-L1 blockade on EC immunogenicity in our control MCEC-T cell co-cultures (Supplemental Figure-4).

Mdivi1 has been reported to protect the mitochondria from oxidative stress,<sup>41</sup> and therefore the observed T-cell immunomodulation induced by M1/Mdivi1 could be due to its antioxidant property rather than fusion/fission-specific effects. To address this, we performed a series of experiments using N-acetylcysteine (NAC), an antioxidant that protects cardiac allografts against IRI.<sup>42</sup> First, to verify the antioxidant property M1/Mdivi1 might possess in our model, we subjected control MCECs, M1/Mdivi1-pretreated MCECs, NAC-pretreated MCECs, or DRP1KDs to CS-IRI. Upon reperfusion, we stained the cells with MitoSOX Red to detect mitochondrial reactive oxygen species. Our results revealed that M1/Mdivi1 exhibited an antioxidant effect similar to NAC, a property that was not associated with fission inhibition by DRP1 knock-down (Supplemental Figure-5A). Subsequently, we co-cultured these cells with allogeneic T-cells upon reperfusion to determine their immunogenicity. Levels of secreted IFN $\gamma$  and granzyme-B at the end of co-cultures demonstrated that the antioxidant property and the anti-inflammatory property were independent of each other, as NAC-pretreated MCECs had similar immunogenicity to control MCECs, while DRP1KDs, which were susceptible to mitochondrial oxidative stress, displayed decreased immunogenicity to allogeneic T-cells (Supplemental Figure-5B).

### **3.4- Pharmacologic Modulation of Mitochondrial Fusion/Fission in ECs Mitigates the Alloimmune Response of Co-cultured T-cells**

Since pre-treating MCECs with M1/Mdivi1 prior to CS significantly reduced their immunogenicity to allogeneic CD8<sup>+</sup> T-cells and altered the expression of their surface markers and proliferative index, we next investigated whether changes in EC immunological phenotype could alter the T-cell response. Using the CS-IRI model with pre-CS M1/Mdivi1 treatment, upon reperfusion we again co-cultured pretreated MCECs or untreated controls with pre-sensitized allogeneic CD8<sup>+</sup> T-cells. After 48 hours of co-culture, we performed flow cytometry on CD8<sup>+</sup> T-cells for markers of memory phenotype, proliferative index, and intracellular cytotoxic protein production. Flow analyses showed that total populations of effector memory (CD44<sup>+</sup> CD62L<sup>-</sup> or CD44<sup>+</sup> CCR7<sup>-</sup>) and central memory (CD44<sup>+</sup>

CD62L<sup>+</sup>) were significantly reduced in T-cells co-cultured with M1/Mdivi1-pretreated MCECs compared to untreated controls (Figure-4, blue gating). Given that CD44 expression correlates to T-cell activation and T<sub>mems</sub> highly expressing CD44 (CD44<sup>hi</sup>) contribute significantly to alloimmune rejection,<sup>43, 44</sup> we gated on the CD44<sup>hi</sup> populations, and found both effector memory (CD44<sup>hi</sup> CD62L<sup>-</sup> or CD44<sup>hi</sup> CCR7<sup>-</sup>) and central memory (CD44<sup>hi</sup> CD62L<sup>+</sup> or CD44<sup>hi</sup> CCR7<sup>+</sup>) were significantly reduced in T-cells co-cultured with pretreated MCECs compared to untreated controls (Figure-4, green gating). Additionally, we noted that the proliferative index was lower in T-cells co-cultured with pretreated MCECs compared to untreated controls, as indicated by Ki-67 expression (Figure-5A). Furthermore, fewer T-cells producing granzyme-B and IFN $\gamma$  (represented by percentage of cells) as well as less granzyme-B and IFN $\gamma$  production (represented by MFI) were noted in pretreated MCEC co-cultures compared to untreated controls (Figure-5B).

### 3.5- Donor Pre-treatment with M1/Mdivi1 Exerts Mitochondria-Elongating Effects on Cardiac ECs but Not Cardiomyocytes

Our *in-vitro* results indicated that promoting fusion/inhibiting fission in ECs altered allogeneic T-cell responses. Building on these novel observations, we utilized a novel murine brain-dead donor cardiac transplant model.<sup>4</sup> Donor brain death was induced, and upon confirmation of donor brain death, a bolus of 2.4mg/kg M1 and 1.2mg/kg Mdivi1 or PBS control was infused via a carotid catheter. The donor was then ventilated further for 3 hours. At the end of this brain-death period, the donor heart was procured. No significant differences in blood pressure, body temperature, or heart rate were seen between the treatment or control groups. Electron microscopy on brain-dead M1/Mdivi1-pretreated donor hearts demonstrated elongated mitochondria, as compared to brain-dead untreated controls or living donor controls, only in the ECs and not in the cardiomyocytes (Figure-6A). As further validation and comparison to our *in-vitro* studies, we isolated ECs from donor hearts and performed confocal imaging. Three-dimensional rendering demonstrated clear elongation of mitochondria in M1/Mdivi1 brain-dead donor ECs compared to controls. Quantification of these images further demonstrated significant differences between the brain-dead treated groups and the brain-dead untreated controls (Figure-6B). The effects of mitochondria elongation by M1/Mdivi1 appeared to be confined to ECs, as no mitochondrial elongation was noted in cardiomyocytes. Since our *in-vitro* data showed M1/Mdivi1 treatment was associated with reduced EC activation, we assessed whether the treatment impacted endothelial barrier functions using *in-vitro* trans-endothelial electrical resistance assays. We found the integrity of the endothelial monolayer pretreated with M1/Mdivi1 prior to CS was significantly improved at 18- and 24-hours post-reperfusion compared to non-treated CS and normal monolayer controls (Supplemental Figure-6).

### 3.6- Donor Pre-treatment with Mitochondrial Fusion Promoter/Fission Inhibitor Protects Cardiac Allografts from Injury and Mitigates T-cell Alloimmune Response

With our imaging studies supporting the efficacy of M1/Mdivi1 donor pre-treatment *in vivo*, we next determined whether the mitochondrial therapy impacted post-transplant outcomes. Brain-dead donor hearts from M1/Mdivi1-pretreated and untreated donors were heterotopically transplanted into allogeneic recipients. Forty-eight hours post-transplant,

serum levels of cardiac troponin-I, a marker for cardiac injury, were found to be significantly reduced in the recipients receiving brain-dead M1/Mdivi1-pretreated hearts compared to brain-dead untreated controls (Figure-7A). Further, semi-quantitative scoring demonstrated a significant reduction in histological evidence of injury in the brain-dead M1/Mdivi1-pretreated hearts compared to brain-dead untreated controls (Figure-7B, Figure-7C). IRI is characterized by innate immune cell infiltration, and therefore, we quantified myeloperoxidase immune cell infiltrates using immunohistochemistry. In keeping with our histological injury scores, M1/Mdivi1 donor pre-treatment significantly reduced immune cell infiltration (Figure-7D).

Our *in-vitro* data showed that M1/Mdivi1 pre-treatment reduced allogeneic T-cell activity, and therefore, we next examined T-cell responses *in vivo*. Flow cytometry analyses on CD8<sup>+</sup> T-cells isolated from allografts at 48 hours post-transplantation revealed that, while there were no changes in effector memory (CD44<sup>+</sup> CD62L<sup>-</sup>) and central memory (CD44<sup>+</sup> CD62L<sup>+</sup>) frequencies in brain-dead pretreated vs control groups (Figure-7E), there were significantly fewer T-cells producing granzyme-B and IFN $\gamma$  as well as less granzyme-B and IFN $\gamma$  production in brain-dead pretreated compared to untreated control groups (Figure-7F). We also examined proliferative index in the infiltrating T-cells (represented by Ki-67 expression), and surprisingly we could not detect any significant differences between groups (Figure-7G).

Furthermore, ECs were also isolated from the cardiac allografts at 48 hours post-transplant, and flow cytometry analyses revealed no significant differences in surface expression of adhesion molecules, costimulatory ligands, MHC-I, or coinhibitory ligands in ECs (Table-2).

### 3.7- Donor Pre-treatment with Mitochondrial Fusion Promoter/Fission Inhibitor Significantly Prolongs Cardiac Allograft Survival

Finally, to assess the impact of mitochondrial therapy on allograft survival, allogeneic heterotopic transplants of Balb/c brain-dead M1/Mdivi1-pretreated hearts or brain-dead control hearts into C57BL/6 recipients were performed (illustrated in Figure-8A). Brain death has been shown to significantly reduce allograft survival compared to that from living donors.<sup>4</sup> Here, M1/Mdivi1 pre-treatment of brain-dead donor hearts was associated with significant prolongation of median allograft survival (9.5 days) compared to untreated brain-dead controls (6 days,  $p=0.0091$  by log-rank test) (Figure-8B). To determine whether M1/Mdivi1's protective effect is all mediated through an antioxidant pathway, we performed direct comparisons of M1/Mdivi1 versus NAC brain-dead donor pre-treatment. Consistent with our *in-vitro* data (Supplemental Figure-5), this protective effect was not seen with antioxidant therapy alone, as NAC pre-treatment resulted in similar outcomes to untreated controls (Figure-8B).

## 4- DISCUSSION

In cardiac transplantation, donor ECs play a pivotal role in allograft immunogenicity by interacting with recipient alloreactive T<sub>mems</sub>. We have previously shown that modulating EC mitochondrial bioenergetics after reperfusion reduced their immunogenicity to allogeneic T-cells.<sup>35</sup> This led us to reason that modulating other aspects of EC mitochondrial physiology,



such as mitochondrial fusion/fission, could alter  $T_{\text{mems}}$  responses and could potentially be clinically translated. In this study, we modulated mitochondria prior to cold storage and investigated the impact of such donor pre-treatment on immunological outcomes.

Since inhibiting mitochondrial fission in the heart is protective against focal IRI,<sup>32</sup> we knocked down DRP1 in ECs to skew mitochondrial dynamics toward fusion. In addition to less DRP1 protein levels and elongated mitochondrial morphology in DRP1KD, our data indicate that DRP1KD has higher mitochondrial fitness and mass. These characteristics are consistent with previous reports that promoting fusion is associated with increased oxidative phosphorylation efficiency and higher mitochondrial mass, thus supporting the validity of our knock-down model.<sup>45–48</sup> Also, less supernatant cytotoxic proteins were detected in co-cultures between DRP1KD and allogeneic T-cells compared to wildtype controls and allogeneic T-cells, in both normothermic and CS-IRI settings. These findings demonstrate that promoting fusion reduces EC immunogenicity to T-cells.

The fusion promoter M1 and the fission inhibitor Mdivi1 have been shown to effectively skew mitochondrial dynamics toward fusion when utilized in combination.<sup>31</sup> In our studies, we employed them as tools to promote fusion/inhibit fission in ECs. We acknowledge a disadvantage of utilizing pharmacologic agents as mechanistic tools is the potential confounding off-target effects.<sup>41</sup> However, our initial findings using the genetic knock-down model suggest that reduced EC immunogenicity is mediated specifically by skewed fission-to-fusion.

When fusion is promoted/fission is inhibited by M1/Mdivi1 in ECs prior to pro-inflammatory cytokine-mediated activation or CS-IRI insults, their immunogenicity is reduced, evidenced by less cytotoxic proteins in co-cultures between M1/Mdivi1-pretreated ECs and allogeneic T-cells, a marked reduction in VCAM-1, an important adhesion molecule for immune synapse formation and T-cell adhesion,<sup>49</sup> and an increase in PD-L1, a co-inhibitory ligand inhibiting T-cell function.<sup>40</sup> Of note, when PD-L1 is blocked, the immuno-protective effect of M1/Mdivi1 pre-treatment is abrogated at least partially, suggesting this observed effect is dependent on PD-L1 expression. PD-1, the receptor of PD-L1, has been shown to be highly expressed in certain types of functionally active  $T_{\text{mems}}$ ,<sup>50</sup> and thus, M1/Mdivi1-mediated PD-L1 expression will offer significant immuno-protection against these T-cell populations.

In the clinically relevant CS-IRI model, we focused on 6 and 24 hours post-reperfusion because EC mitochondrial changes and immunological phenotypes are the most strongly associated at these two timepoints.<sup>35</sup> T-cells infiltrate cardiac allografts within the first 24 hours post-reperfusion and start releasing cytotoxic proteins to mediate allograft rejection from 24–72 hours post-reperfusion.<sup>10, 51</sup> In this context, a reduction of MHC-I at 6 hours post-reperfusion, of VCAM-1, Ki-67 (a marker for cellular proliferative index) at 24 hours post-reperfusion, and an increase of PD-L1 at 24 hours post-reperfusion, as shown by our data, can alter the T-cell response significantly. Indeed, *in vitro*, at 48 hours post-reperfusion, CD8<sup>+</sup> T-cells co-cultured with pretreated ECs display a significant reduction in both memory compartments, proliferative index, and intracellular production of cytotoxic proteins. *In vivo*, at 48 hours post-transplant, CD8<sup>+</sup> T-cells isolated from

M1/Mdivi1-pretreated allografts display a significant reduction in intracellular cytotoxic protein production. These T-cells, however, do not have any changes in memory phenotype and proliferative index. The discrepancy between *in-vitro* and *in-vivo* T-cell responses can be attributed to the complexity of the *in-vivo* microenvironment, such as the presence of complex cytokine milieu composition.<sup>52</sup>

To assess transplant outcome, we used a murine cardiac transplant model incorporating donor brain death, a clinically relevant phenomenon predisposing allografts to pro-inflammatory states.<sup>4, 53</sup> We demonstrated that promoting mitochondrial fusion/inhibiting fission in donor ECs reduces cardiac injury and significantly delays allograft rejection. Of note, the effects of M1/Mdivi1 pre-treatment on cardiac allografts appear to be EC-specific, as changes in mitochondrial morphology only occurred in ECs but not in cardiomyocytes. Given our adhesion molecule expression data, we speculated that M1/Mdivi1 abrogates EC activation, which promotes improved EC barrier functions, demonstrated with our trans-endothelial resistance studies, and thus may limit exposure of cardiomyocytes to circulating M1/Mdivi1. Alternatively, given the high density of mitochondria in cardiomyocytes, a higher dose of M1/Mdivi1 may be required to effect cardiomyocytes. Finally, the extracellular matrix separating ECs and cardiomyocytes may inhibit diffusion of M1/Mdivi1 to the cardiomyocytes. Nevertheless, this selectivity may be a significant therapeutic benefit, and may well obviate any potentially confounding side-effects of modulating cardiomyocyte metabolic functions.

How exactly modulating mitochondrial fusion/fission alters EC immunological phenotype remains unclear. Reports by other groups have indicated mitochondrial fusion can be induced through mTOR-NFkB-OPA1 signaling.<sup>54</sup> Since the NFkB pathway controls VCAM-1 expression,<sup>55</sup> promoting fusion/inhibiting fission possibly induces a feedback inhibition that reduces NFkB activation, leading to reduced VCAM-1 expression. Additionally, inhibiting mTOR in human ECs has been shown to increase PD-L1,<sup>56</sup> and thus the same feedback inhibition potentially leads to PD-L1 upregulation. Furthermore, in other cardiac IRI models, inhibiting mitochondrial fission in microvascular ECs leads to inhibition of mitochondrial permeability transition pore (mPTP) opening by preventing voltage-dependent anion channel-1 (VDAC-1) oligomerization.<sup>34</sup> As we have shown in our previous studies that post-reperfusion mPTP inhibition reduces EC immunogenicity,<sup>35</sup> M1/Mdivi1 pre-treatment prior to cold storage might alter VDAC-1 oligomerization in ECs, leading to longer mPTP closure post-reperfusion in our model. Future studies will be directed toward studying the exact mechanisms underlying the regulation of mitochondrial fusion/fission on EC immunological phenotype.

As therapeutics could be targeted to ECs using nanoparticles containing Arginine-Glycine-Aspartate sequence, demonstrated by previous *in-vitro* and *in-vivo* studies,<sup>57, 58</sup> the same delivery modality could be utilized to enhance M1/Mdivi1 uptake in ECs and would be another potential future investigation.

In summary, we demonstrate through clinically relevant *in-vitro* CS-IRI models that promoting mitochondrial fusion/inhibiting fission in donor ECs reduces their immunogenicity and suppresses T<sub>mems</sub> responses. We also describe a novel approach that

improves transplant outcomes *in vivo* through modulating mitochondrial dynamics of donor cardiac allografts. These findings serve as a foundation for potential clinical translation in humans to potentially facilitate induction of transplant tolerance.

## Supplementary Material

Refer to Web version on PubMed Central for supplementary material.

## Acknowledgments

We would like to thank Nancy Smythe for her expertise on transmission electron microscopy and Diana Fulmer for her insights into the IMARIS software.

## Sources of Funding

This study was supported by grants from the National Institute of Health (NIAID R01 AI142079 01A1 to Dr. Satish Nadig, 1U01AI132894-01 to Dr. Carl Atkinson, NHLBI Predoctoral Fellowship Training Grant T32 HL007260 to Danh Tran, NIGMS MSTP Predoctoral Fellowship Training Grant T32 GM008716 to Danh Tran), funding from the Patterson Barclay Memorial Foundation, and funding grant USPHS S10 OD018113 “Confocal/Multiphoton Microscope Upgrade” to MUSC Imaging Core.

## Data Availability Statement

The data that support the findings of this study are available from the corresponding author upon reasonable request.

## Abbreviations:

<b>BD</b>	brain death
<b>CS</b>	cold storage
<b>CS-IRI</b>	cold storage-ischemia reperfusion injury
<b>DRP1</b>	dynamin-related protein 1
<b>DRP1KD</b>	dynamin-related protein 1 knock-down cell
<b>EC</b>	endothelial cell
<b>IRI</b>	ischemia-reperfusion injury
<b>MCEC</b>	microvascular cardiac endothelial cell
<b>mPTP</b>	mitochondrial permeability transition pore
<b>MUSC</b>	Medical University of South Carolina
<b>NAC</b>	N-acetylcysteine
<b>T<sub>mems</sub></b>	memory T-cells
<b>UW solution</b>	University of Wisconsin solution
<b>VDAC-1</b>	voltage-dependent anion channel-1

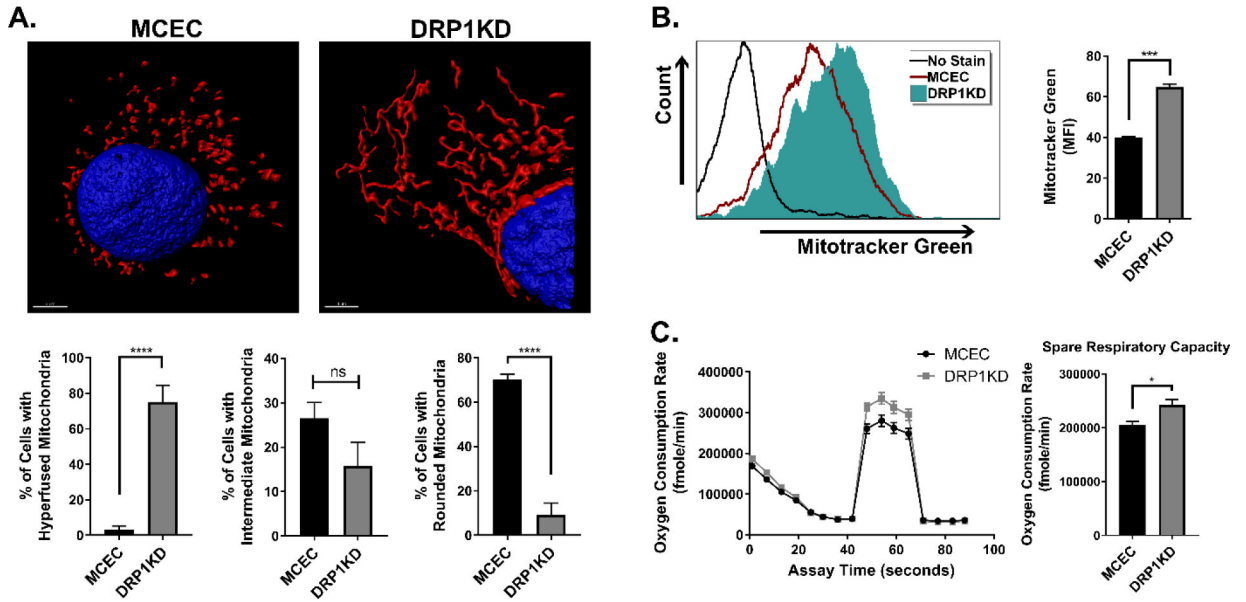
## References

1. Toyoda Y, Guy TS, Kashem A. Present status and future perspectives of heart transplantation. *Circulation journal : official journal of the Japanese Circulation Society*. 2013;77(5):1097–110. [PubMed: 23614963]
2. Eisen H Patient Education: Heart Transplantation (Beyond the Basics). In: Post T, ed. UpToDate. 2017.
3. Libby P, Pober JS. Chronic rejection. *Immunity*. Apr 2001;14(4):387–97. [PubMed: 11336684]
4. Atkinson C, Floerchinger B, Qiao F, et al. Donor brain death exacerbates complement-dependent ischemia/reperfusion injury in transplanted hearts. *Circulation*. Mar 26 2013;127(12):1290–9. doi:10.1161/circulationaha.112.000784 [PubMed: 23443736]
5. Wilhelm MJ, Pratschke J, Laskowski IA, Paz DM, Tilney NL. Brain death and its impact on the donor heart-lessons from animal models. *The Journal of heart and lung transplantation : the official publication of the International Society for Heart Transplantation*. May 2000;19(5):414–8. doi:10.1016/s1053-2498(00)00073-5
6. Wilhelm MJ, Pratschke J, Beato F, et al. Activation of the heart by donor brain death accelerates acute rejection after transplantation. *Circulation*. Nov 7 2000;102(19):2426–33. [PubMed: 11067799]
7. van der Woude FJ, Schnuelle P, Yard BA. Preconditioning strategies to limit graft immunogenicity and cold ischemic organ injury. *Journal of investigative medicine : the official publication of the American Federation for Clinical Research*. Jul 2004;52(5):323–9. [PubMed: 15551655]
8. Abrahimi P, Liu R, Pober JS. Blood Vessels in Allotransplantation. *American journal of transplantation : official journal of the American Society of Transplantation and the American Society of Transplant Surgeons*. Jul 2015;15(7):1748–54. doi:10.1111/ajt.13242
9. Su CA, Iida S, Abe T, Fairchild RL. Endogenous memory CD8 T cells directly mediate cardiac allograft rejection. *American journal of transplantation : official journal of the American Society of Transplantation and the American Society of Transplant Surgeons*. Mar 2014;14(3):568–79. doi:10.1111/ajt.12605
10. Schenk AD, Nozaki T, Rabant M, Valujskikh A, Fairchild RL. Donor-reactive CD8 memory T cells infiltrate cardiac allografts within 24-h posttransplant in naive recipients. *American journal of transplantation : official journal of the American Society of Transplantation and the American Society of Transplant Surgeons*. Aug 2008;8(8):1652–61. doi:10.1111/j.1600-6143.2008.02302.x
11. Epperson DE, Pober JS. Antigen-presenting function of human endothelial cells. Direct activation of resting CD8 T cells. *Journal of immunology (Baltimore, Md : 1950)*. Dec 15 1994;153(12):5402–12.
12. Kreisel D, Krasinskas AM, Krupnick AS, et al. Vascular endothelium does not activate CD4+ direct allorecognition in graft rejection. *Journal of immunology (Baltimore, Md : 1950)*. Sep 01 2004;173(5):3027–34.
13. Kreisel D, Krupnick AS, Balsara KR, et al. Mouse vascular endothelium activates CD8+ T lymphocytes in a B7-dependent fashion. *Journal of immunology (Baltimore, Md : 1950)*. Dec 1 2002;169(11):6154–61. doi:10.4049/jimmunol.169.11.6154
14. Kreisel D, Krupnick AS, Gelman AE, et al. Non-hematopoietic allograft cells directly activate CD8+ T cells and trigger acute rejection: an alternative mechanism of allorecognition. *Nature medicine*. Mar 2002;8(3):233–9. doi:10.1038/nm0302-233
15. Krupnick AS, Kreisel D, Popma SH, et al. Mechanism of T cell-mediated endothelial apoptosis. *Transplantation*. Sep 27 2002;74(6):871–6. doi:10.1097/00007890-200209270-00022 [PubMed: 12364869]
16. Pearl JP, Parris J, Hale DA, et al. Immunocompetent T-cells with a memory-like phenotype are the dominant cell type following antibody-mediated T-cell depletion. *American journal of transplantation : official journal of the American Society of Transplantation and the American Society of Transplant Surgeons*. Mar 2005;5(3):465–74. doi:10.1111/j.1600-6143.2005.00759.x
17. Trzonkowski P, Zilvetti M, Friend P, Wood KJ. Recipient memory-like lymphocytes remain unresponsive to graft antigens after CAMPATH-1H induction with

- reduced maintenance immunosuppression. *Transplantation*. Nov 27 2006;82(10):1342–51. doi:10.1097/01.tp.0000239268.64408.84 [PubMed: 17130784]
18. Ayasoufi K, Yu H, Fan R, Wang X, Williams J, Valujskikh A. Pretransplant antithymocyte globulin has increased efficacy in controlling donor-reactive memory T cells in mice. *American journal of transplantation : official journal of the American Society of Transplantation and the American Society of Transplant Surgeons*. Mar 2013;13(3):589–99. doi:10.1111/ajt.12068
  19. Duboc D, Abastado P, Muffat-Joly M, et al. Evidence of mitochondrial impairment during cardiac allograft rejection. *Transplantation*. Nov 1990;50(5):751–5. [PubMed: 2238049]
  20. Fernandez D, Bonilla E, Mirza N, Niland B, Perl A. Rapamycin reduces disease activity and normalizes T cell activation-induced calcium fluxing in patients with systemic lupus erythematosus. *Arthritis and rheumatism*. Sep 2006;54(9):2983–8. doi:10.1002/art.22085 [PubMed: 16947529]
  21. Lin L, Xu H, Bishawi M, et al. Circulating mitochondria in organ donors promote allograft rejection. *American journal of transplantation : official journal of the American Society of Transplantation and the American Society of Transplant Surgeons*. Jul 2019;19(7):1917–1929. doi:10.1111/ajt.15309
  22. Pollara J, Edwards RW, Lin L, Bendersky VA, Brennan TV. Circulating mitochondria in deceased organ donors are associated with immune activation and early allograft dysfunction. *JCI insight*. Aug 9 2018;3(15)doi:10.1172/jci.insight.121622
  23. Roedder S, Sigdel T, Hsieh SC, et al. Expression of Mitochondrial-Encoded Genes in Blood Differentiate Acute Renal Allograft Rejection. *Frontiers in medicine*. 2017;4:185. doi:10.3389/fmed.2017.00185 [PubMed: 29164120]
  24. Saba H, Munusamy S, Macmillan-Crow LA. Cold preservation mediated renal injury: involvement of mitochondrial oxidative stress. *Renal failure*. 2008;30(2):125–33. doi:10.1080/08860220701813327 [PubMed: 18300110]
  25. Serviddio G, Bellanti F, Sastre J, Vendemiale G, Altomare E. Targeting mitochondria: a new promising approach for the treatment of liver diseases. *Current medicinal chemistry*. 2010;17(22):2325–37. doi:10.2174/092986710791698530 [PubMed: 20491641]
  26. Zepeda-Orozco D, Kong M, Scheuermann RH. Molecular Profile of Mitochondrial Dysfunction in Kidney Transplant Biopsies Is Associated With Poor Allograft Outcome. *Transplantation proceedings*. Jul-Aug 2015;47(6):1675–82. doi:10.1016/j.transproceed.2015.04.086 [PubMed: 26293032]
  27. Chan DC. Mitochondrial fusion and fission in mammals. *Annual review of cell and developmental biology*. 2006;22:79–99. doi:10.1146/annurev.cellbio.22.010305.104638
  28. Westermann B Mitochondrial fusion and fission in cell life and death. *Nature reviews Molecular cell biology*. Dec 2010;11(12):872–84. doi:10.1038/nrm3013 [PubMed: 21102612]
  29. Parajuli N, Shrum S, Tobacyk J, Harb A, Arthur JM, MacMillan-Crow LA. Renal cold storage followed by transplantation impairs expression of key mitochondrial fission and fusion proteins. *PloS one*. 2017;12(10):e0185542. doi:10.1371/journal.pone.0185542 [PubMed: 28977005]
  30. Ryu SW, Han EC, Yoon J, Choi C. The mitochondrial fusion-related proteins Mfn2 and OPA1 are transcriptionally induced during differentiation of bone marrow progenitors to immature dendritic cells. *Molecules and cells*. Jan 31 2015;38(1):89–94. doi:10.14348/molcells.2015.2285 [PubMed: 25387754]
  31. Buck MD, O’Sullivan D, Klein Geltink RI, et al. Mitochondrial Dynamics Controls T Cell Fate through Metabolic Programming. *Cell*. Jun 30 2016;166(1):63–76. doi:10.1016/j.cell.2016.05.035 [PubMed: 27293185]
  32. Ong SB, Subrayan S, Lim SY, Yellon DM, Davidson SM, Hausenloy DJ. Inhibiting mitochondrial fission protects the heart against ischemia/reperfusion injury. *Circulation*. May 11 2010;121(18):2012–22. doi:10.1161/circulationaha.109.906610 [PubMed: 20421521]
  33. Shimizu Y, Lambert JP, Nicholson CK, et al. DJ-1 protects the heart against ischemia-reperfusion injury by regulating mitochondrial fission. *Journal of molecular and cellular cardiology*. Aug 2016;97:56–66. doi:10.1016/j.yjmcc.2016.04.008 [PubMed: 27108530]
  34. Zhou H, Hu S, Jin Q, et al. Mff-Dependent Mitochondrial Fission Contributes to the Pathogenesis of Cardiac Microvasculature Ischemia/Reperfusion Injury via Induction of mROS-Mediated

- Cardiolipin Oxidation and HK2/VDAC1 Disassociation-Involved mPTP Opening. *Journal of the American Heart Association*. Mar 13 2017;6(3)doi:10.1161/jaha.116.005328
35. Tran DT, Eस्कilsen S, Mulligan J, Mehrotra S, Atkinson C, Nadig SN. Impact of Mitochondrial Permeability on Endothelial Cell Immunogenicity in Transplantation. *Transplantation*. Jun 2018;102(6):935–944. doi:10.1097/tp.0000000000002163 [PubMed: 29538260]
  36. Zhang B, Alysandratos KD, Angelidou A, et al. Human mast cell degranulation and preformed TNF secretion require mitochondrial translocation to exocytosis sites: relevance to atopic dermatitis. *The Journal of allergy and clinical immunology*. Jun 2011;127(6):1522–31.e8. doi:10.1016/j.jaci.2011.02.005 [PubMed: 21453958]
  37. Doherty E, Perl A. Measurement of Mitochondrial Mass by Flow Cytometry during Oxidative Stress. *Reactive oxygen species (Apex, NC)*. Jul 2017;4(10):275–283. doi:10.20455/ros.2017.839
  38. Zhang Q, Chen Y, Fairchild RL, Heeger PS, Valujskikh A. Lymphoid sequestration of alloreactive memory CD4 T cells promotes cardiac allograft survival. *Journal of immunology (Baltimore, Md : 1950)*. Jan 15 2006;176(2):770–7. doi:10.4049/jimmunol.176.2.770
  39. Laskowski I, Pratschke J, Wilhelm MJ, Gasser M, Tilney NL. Molecular and cellular events associated with ischemia/reperfusion injury. *Annals of transplantation*. 2000;5(4):29–35.
  40. O'Malley G, Treacy O, Lynch K, et al. Stromal Cell PD-L1 Inhibits CD8(+) T-cell Antitumor Immune Responses and Promotes Colon Cancer. *Cancer immunology research*. Nov 2018;6(11):1426–1441. doi:10.1158/2326-6066.cir-17-0443 [PubMed: 30228206]
  41. Bordt EA, Clerc P, Roelofs BA, et al. The Putative Drp1 Inhibitor mdivi-1 Is a Reversible Mitochondrial Complex I Inhibitor that Modulates Reactive Oxygen Species. *Developmental cell*. Mar 27 2017;40(6):583–594.e6. doi:10.1016/j.devcel.2017.02.020 [PubMed: 28350990]
  42. Mei J, Zhu J, Ding F, Bao C, Wu S. N-acetylcysteine improves early cardiac isograft function in a rat heterotopic transplantation model. *Transplantation proceedings*. Nov 2009;41(9):3632–6. doi:10.1016/j.transproceed.2009.06.206 [PubMed: 19917357]
  43. Schumann J, Stanko K, Schliesser U, Appelt C, Sawitzki B. Differences in CD44 Surface Expression Levels and Function Discriminates IL-17 and IFN-gamma Producing Helper T Cells. *PloS one*. 2015;10(7):e0132479. doi:10.1371/journal.pone.0132479 [PubMed: 26172046]
  44. Wang H, Zhang Z, Tian W, et al. Memory T Cells Mediate Cardiac Allograft Vasculopathy and are Inactivated by Anti-OX40L Monoclonal Antibody. *Cardiovascular drugs and therapy*. Apr 2014;28(2):115–22. doi:10.1007/s10557-013-6502-9 [PubMed: 24254032]
  45. Mishra P, Carelli V, Manfredi G, Chan DC. Proteolytic cleavage of Opa1 stimulates mitochondrial inner membrane fusion and couples fusion to oxidative phosphorylation. *Cell metabolism*. Apr 1 2014;19(4):630–41. doi:10.1016/j.cmet.2014.03.011 [PubMed: 24703695]
  46. Yao CH, Wang R, Wang Y, Kung CP, Weber JD, Patti GJ. Mitochondrial fusion supports increased oxidative phosphorylation during cell proliferation. *eLife*. Jan 29 2019;8doi:10.7554/eLife.41351
  47. Wu LH, Chang HC, Ting PC, Wang DL. Laminar shear stress promotes mitochondrial homeostasis in endothelial cells. *Journal of cellular physiology*. Jun 2018;233(6):5058–5069. doi:10.1002/jcp.26375 [PubMed: 29219180]
  48. Teijeira A, Labiano S, Garasa S, et al. Mitochondrial Morphological and Functional Reprogramming Following CD137 (4–1BB) Costimulation. *Cancer immunology research*. Jul 2018;6(7):798–811. doi:10.1158/2326-6066.cir-17-0767 [PubMed: 29678874]
  49. Chakraborty S, Hu SY, Wu SH, Karmenyan A, Chiou A. The interaction affinity between vascular cell adhesion molecule-1 (VCAM-1) and very late antigen-4 (VLA-4) analyzed by quantitative FRET. *PloS one*. 2015;10(3):e0121399. doi:10.1371/journal.pone.0121399 [PubMed: 25793408]
  50. Blanc C, Hans S, Tran T, et al. Targeting Resident Memory T Cells for Cancer Immunotherapy. *Frontiers in immunology*. 2018;9:1722. doi:10.3389/fimmu.2018.01722 [PubMed: 30100906]
  51. El-Sawy T, Miura M, Fairchild R. Early T cell response to allografts occurring prior to alloantigen priming up-regulates innate-mediated inflammation and graft necrosis. *The American journal of pathology*. Jul 2004;165(1):147–57. [PubMed: 15215170]
  52. Chen J, Liu C, Liu B, Kong D, Wen L, Gong W. Donor IL-6 deficiency evidently reduces memory T cell responses in sensitized transplant recipients. *Transplant immunology*. Dec 2018;51:66–72. doi:10.1016/j.trim.2018.09.005 [PubMed: 30287356]

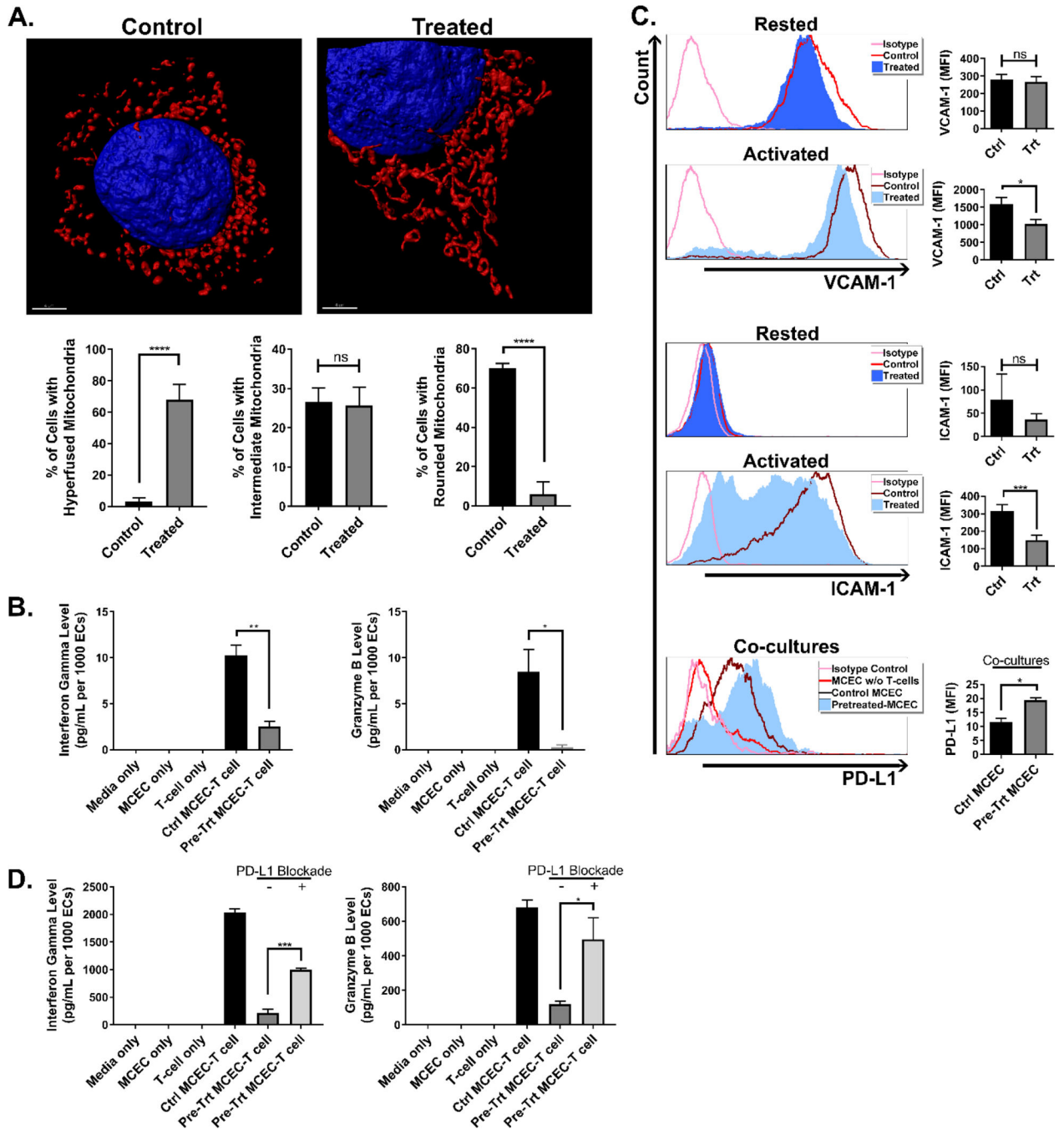
53. Takada M, Nadeau KC, Hancock WW, et al. Effects of explosive brain death on cytokine activation of peripheral organs in the rat. *Transplantation*. Jun 27 1998;65(12):1533–42. [PubMed: 9665067]
54. Parra V, Verdejo HE, Iglewski M, et al. Insulin stimulates mitochondrial fusion and function in cardiomyocytes via the Akt-mTOR-NFkappaB-Opa-1 signaling pathway. *Diabetes*. Jan 2014;63(1):75–88. doi:10.2337/db13-0340 [PubMed: 24009260]
55. Milstone DS, Ilyama M, Chen M, et al. Differential role of an NF-kappaB transcriptional response element in endothelial versus intimal cell VCAM-1 expression. *Circulation research*. Jul 3 2015;117(2):166–77. doi:10.1161/circresaha.117.306666 [PubMed: 26034041]
56. Wang C, Yi T, Qin L, et al. Rapamycin-treated human endothelial cells preferentially activate allogeneic regulatory T cells. *The Journal of clinical investigation*. Apr 2013;123(4):1677–93. doi:10.1172/jci66204 [PubMed: 23478407]
57. Nadig SN, Dixit SK, Levey N, et al. Immunosuppressive nano-therapeutic micelles downregulate endothelial cell inflammation and immunogenicity. *RSC advances*. 2015;5(54):43552–43562. doi:10.1039/c5ra04057d [PubMed: 26167278]
58. Zhu P, Atkinson C, Dixit S, et al. Organ preservation with targeted rapamycin nanoparticles: a pre-treatment strategy preventing chronic rejection in vivo. *RSC advances*. Jul 23 2018;8(46):25909–25919. doi:10.1039/c8ra01555d [PubMed: 30220998]
59. Duvezin-Caubet S, Jagasia R, Wagener J, et al. Proteolytic processing of OPA1 links mitochondrial dysfunction to alterations in mitochondrial morphology. *The Journal of biological chemistry*. Dec 8 2006;281(49):37972–9. doi:10.1074/jbc.M606059200 [PubMed: 17003040]
60. Giustarini D, Galvagni F, Dalle Donne I, et al. N-acetylcysteine ethyl ester as GSH enhancer in human primary endothelial cells: A comparative study with other drugs. *Free radical biology & medicine*. Oct 2018;126:202–209. doi:10.1016/j.freeradbiomed.2018.08.013 [PubMed: 30114478]
61. Muthumani K, Shedlock DJ, Choo DK, et al. HIV-mediated phosphatidylinositol 3-kinase/serine-threonine kinase activation in APCs leads to programmed death-1 ligand upregulation and suppression of HIV-specific CD8 T cells. *Journal of immunology (Baltimore, Md : 1950)*. Sep 15 2011;187(6):2932–43. doi:10.4049/jimmunol.1100594
62. Zhang G, Chen G, Liu L, Qiu J, Chen L. A novel accelerated rejection model for mouse cardiac transplantation involving presensitization with donor splenocytes. *The Journal of surgical research*. May 1 2013;181(1):146–55. doi:10.1016/j.jss.2012.05.031 [PubMed: 22683077]
63. Cardella JA, Keshavjee S, Mourgeon E, et al. A novel cell culture model for studying ischemia-reperfusion injury in lung transplantation. *Journal of applied physiology (Bethesda, Md : 1985)*. Oct 2000;89(4):1553–60. doi:10.1152/jappl.2000.89.4.1553
64. Tan J, Liu D, Lv X, et al. MAPK mediates inflammatory response and cell death in rat pulmonary microvascular endothelial cells in an ischemia-reperfusion model of lung transplantation. *The Journal of heart and lung transplantation : the official publication of the International Society for Heart Transplantation*. Aug 2013;32(8):823–31. doi:10.1016/j.healun.2013.05.005
65. Giraud S, Steichen C, Couturier P, et al. Influence of Hypoxic Preservation Temperature on Endothelial Cells and Kidney Integrity. *BioMed research international*. 2019;2019:8572138. doi:10.1155/2019/8572138 [PubMed: 31275986]
66. Hendriks KDW, Brüggewirth IMA, Maassen H, et al. Renal temperature reduction progressively favors mitochondrial ROS production over respiration in hypothermic kidney preservation. *Journal of translational medicine*. Aug 13 2019;17(1):265. doi:10.1186/s12967-019-2013-1 [PubMed: 31409351]



**Figure-1: Genetic Alteration of Mitochondrial Fission Machinery Reduces EC Immunogenicity.**

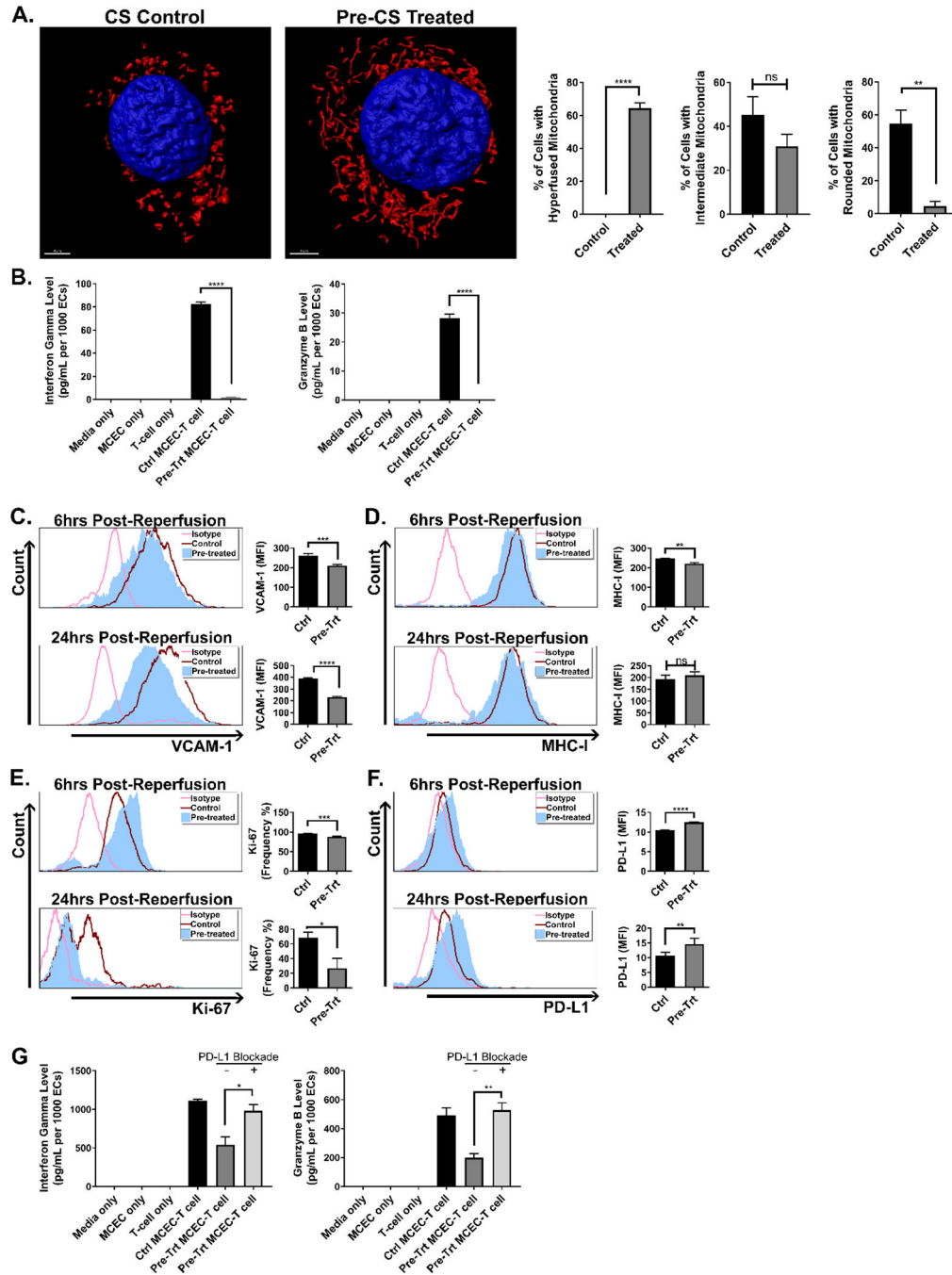
(A) Representative 3D confocal images showing mitochondrial elongation in ECs that have dynamin-related protein 1 (DRP1) knocked down (referred to as DRP1KDs) (red: mitochondria, blue: nuclei), and quantification of mitochondrial morphology in cells (hyperfused: at least one mitochondria  $\geq 5\mu\text{m}$  in length, intermediate: at least one mitochondria between  $5\mu\text{m}$  and  $2\mu\text{m}$  but none more than  $5\mu\text{m}$ , rounded: none longer than  $2\mu\text{m}$ ) (n=4 with 80 cells/group). (B) Mitochondrial mass of DRP1KD vs MCEC (the wildtype control) quantified by flow cytometry for mean fluorescence intensity of Mitotracker Green (n=3). (C) Mitochondrial fitness of DRP1KD vs MCEC assessed by Seahorse flux assay (n=4). (D) Immunogenicity of DRP1KD vs MCEC when being co-cultured with allogeneic CD8<sup>+</sup> T-cells, demonstrated by supernatant levels of interferon gamma and granzyme-B levels after 7 days of coculturing (n=3). (E) Representative 3D confocal images showing mitochondrial elongation is unchanged at 1 hour post-reperfusion in DRP1KDs that were subjected to static cold storage for 6 hours prior to reperfusion with warm media (red: mitochondria, blue: nuclei), and quantification of mitochondrial morphology performed as in Figure-1A (n=4 with 80 cells/group). (F) Immunogenicity of DRP1KD vs MCEC that were subjected to cold storage for 6 hours prior to reperfusion with warm media and co-cultured with allogeneic CD8<sup>+</sup> T-cells, demonstrated by supernatant levels of interferon gamma and granzyme-B after 7 days of coculturing (n=3). (\*\*\*\*p<0.0001, \*\*\*p<0.005, \*\*p<0.01, \*p<0.05. Differences between DRP1KD vs MCEC were analyzed using Student's t-test. In panels (D) and (F), granzyme-B and interferon gamma levels were normalized to the number of ECs at the initiation of co-culture to account for target differences)





**Figure-2: Pharmacological Modulation of Mitochondrial Fusion/Fission Prior to Pro-inflammatory Cytokine Insult Reduces EC Immunogenicity.**  
**(A)** Representative 3D confocal images showing mitochondrial elongation in M1/Mdivi1-treated MCECs (red: mitochondria, blue: nuclei), and quantification of mitochondrial morphology performed as in Figure 1A (n=4 with 80 cells/group). **(B)** Immunogenicity of M1/Mdivi1-pretreated cells vs untreated control co-cultured with allogeneic CD8<sup>+</sup> T-cells, demonstrated by supernatant interferon gamma and granzyme-B levels after 7 days of coculturing (n=3). **(C)** VCAM-1, ICAM-1 adhesion molecules expression on the surface of

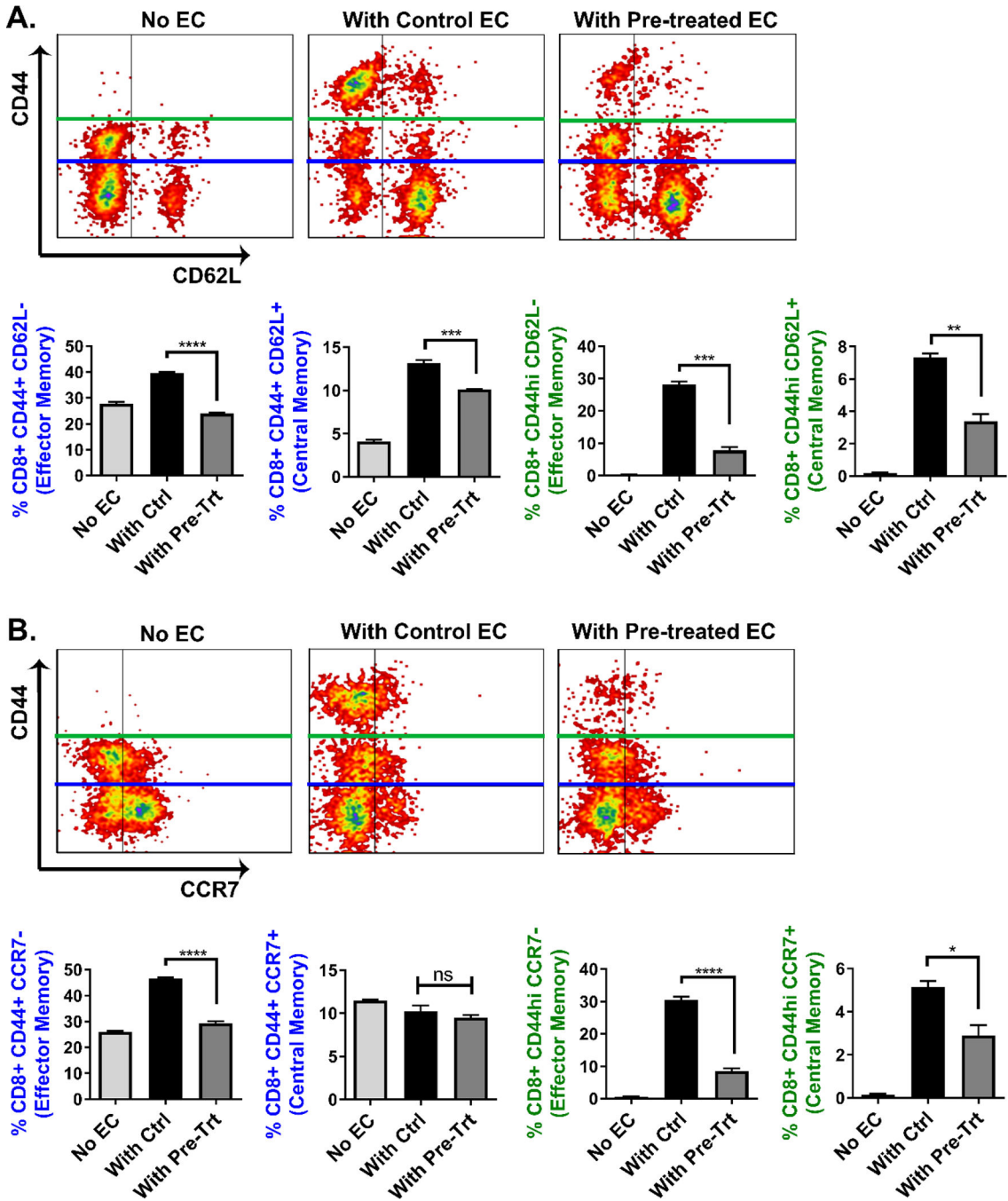
MCECs pretreated with M1/Mdivi1 for 24 hours vs untreated control prior to activation by TNF $\alpha$ /IFN $\gamma$  (n=4), and PD-L1 expression on the surface of M1/Mdivi1-pretreated MCECs after 4 days co-cultured with CD8<sup>+</sup> T-cells (n=3). **(D)** Abrogation of tolerogenic effect induced by M1/Mdivi1 when PD-L1 is blocked, demonstrated by supernatant interferon gamma and granzyme-B levels after 7 days of co-culturing in the presence of anti-PD-L1 blocking antibodies (n=3). (\*\*\*\*p<0.0001, \*\*\*p<0.005, \*\*p<0.01, \*p<0.05. Differences between untreated control and M1/Mdivi1-treated groups, as well as between PD-L1-unblocked control and PD-L1-blocked groups, were analyzed using Student's t-test. In panels **(B)** and **(D)**, granzyme-B and interferon gamma levels were normalized to the number of ECs at the initiation of co-culture to account for target differences)



**Figure-3: Pharmacological Modulation of Mitochondrial Fusion/Fission Prior to Cold Storage Reduces EC Immunogenicity after Reperfusion.**

(A) Representative 3D confocal images showing mitochondrial elongation is still retained at 1 hour post-reperfusion in MCECs pretreated with M1/Mdivi1 normothermally prior to 6-hour cold storage and warm reperfusion (red: mitochondria, blue: nuclei), and quantification of mitochondrial morphology performed as in Figure-1A (n=4 with 80 cells/group). (B) Immunogenicity of MCECs pretreated with M1/Mdivi1 normothermally prior to 6-hour cold storage and warm reperfusion, followed by co-culture with allogeneic CD8<sup>+</sup> T-cells,

demonstrated by supernatant interferon gamma and granzyme-B levels after 7 days of coculturing (n=3). Surface expression of VCAM-1 (**C**), MHC-I (**D**), intracellular expression of Ki-67 (**E**), and surface expression of PD-L1 (**F**) at 6 hours (top) and 24 hours (bottom) post-reperfusion in MCECs pretreated with M1/Mdivi1 normothermically prior to 6-hour cold storage and warm reperfusion. (n=3–6). (**G**) Abrogation of tolerogenic effect induced by pre-cold storage M1/Mdivi1 treatment when PD-L1 is blocked, demonstrated by supernatant interferon gamma and granzyme-B levels after 7 days of coculturing in the presence of anti-PD-L1 blocking antibodies (n=3). (\*\*\*\*p<0.0001, \*\*\*p<0.005, \*\*p<0.01, \*p<0.05. Differences between untreated control and M1/Mdivi1-treated groups, as well as between PD-L1-unblocked control and PD-L1-blocked groups, were analyzed using Student's t-test. In panels (**B**) and (**G**), interferon gamma and granzyme-B levels were normalized to the number of ECs at the initiation of co-culture to account for target differences)



**Figure-4: Pharmacological Modulation of Mitochondrial Fusion/Fission in ECs Alters the Memory Phenotype of Co-cultured T-cells.**

**Blue gating:** Flow cytometry analyses showing the percentages of both effector memory population, with phenotype CD44<sup>+</sup> CD62L<sup>-</sup> (A) or CD44<sup>+</sup> CCR7<sup>-</sup> (B), and central memory population, with phenotype CD44<sup>+</sup> CD62L<sup>+</sup> (B), are lower in CD8<sup>+</sup> T-cells co-cultured with pre-cold storage M1/Mdivi1-treated MCECs vs untreated controls (n=3). **Green gating:** Flow cytometry analyses with a focus on the CD44<sup>hi</sup> populations showing that both effector memory population, with phenotype CD44<sup>hi</sup> CD62L<sup>-</sup> (A) or CD44<sup>hi</sup> CCR7<sup>-</sup> (B), and

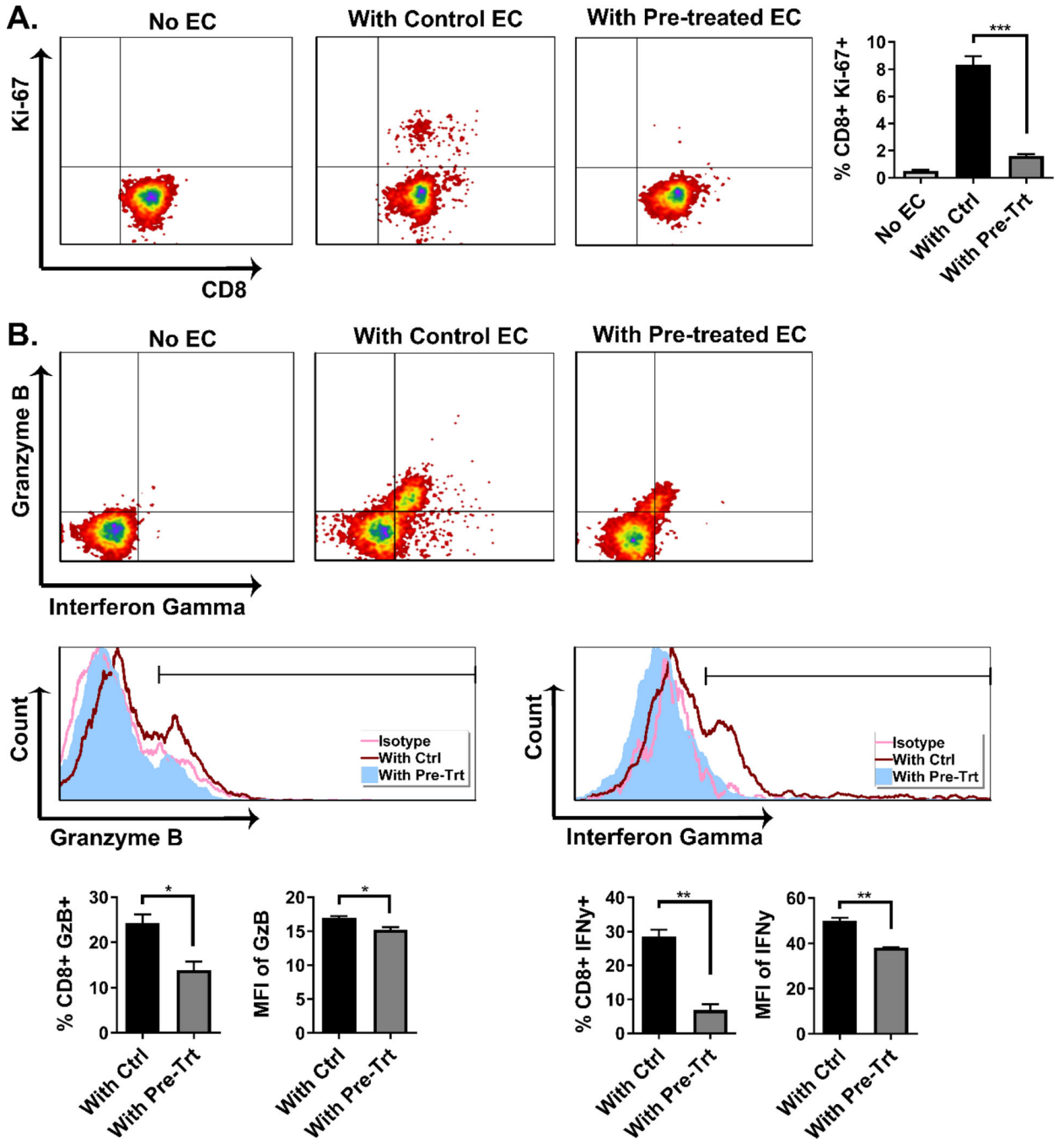
central memory population, with phenotype CD44<sup>hi</sup> CD62L<sup>+</sup> (**A**) or CD44<sup>hi</sup> CCR7<sup>+</sup> (**B**), are lower in CD8<sup>+</sup> T-cells co-cultured with pre-cold storage M1/Mdivi1-treated MCECs vs untreated controls (n=3) (\*\*\*\*p<0.0001, \*\*\*p<0.005, \*\*p<0.01, \*p<0.05. Differences between untreated control and M1/Mdivi1-treated groups were analyzed using Student's t-test)

Author Manuscript

Author Manuscript

Author Manuscript

Author Manuscript



**Figure-5: Pharmacological Modulation of Mitochondrial Fusion/Fission in ECs Mitigates the Alloimmune Response of Co-cultured T-cells.**

(A) Flow cytometry analyses showing the percentages of proliferative CD8<sup>+</sup> T-cells, marked by Ki-67 expression, are lower in T-cells co-cultured with pre-cold storage M1/Mdivi1-treated MCECs vs untreated controls (n=3). (B) Flow cytometry analyses showing that both percentages of CD8<sup>+</sup> T-cells expressing the two cytotoxic proteins granzyme-B and interferon gamma, and mean fluorescence intensity (MFI) of the cytotoxic proteins are lower in T-cells co-cultured with pre-cold storage M1/Mdivi1-treated MCECs vs untreated

controls (n=3). (\*\*p<0.01, \*p<0.05. Differences between untreated controls and M1/Mdivi1-treated groups were analyzed using Student's t-test)

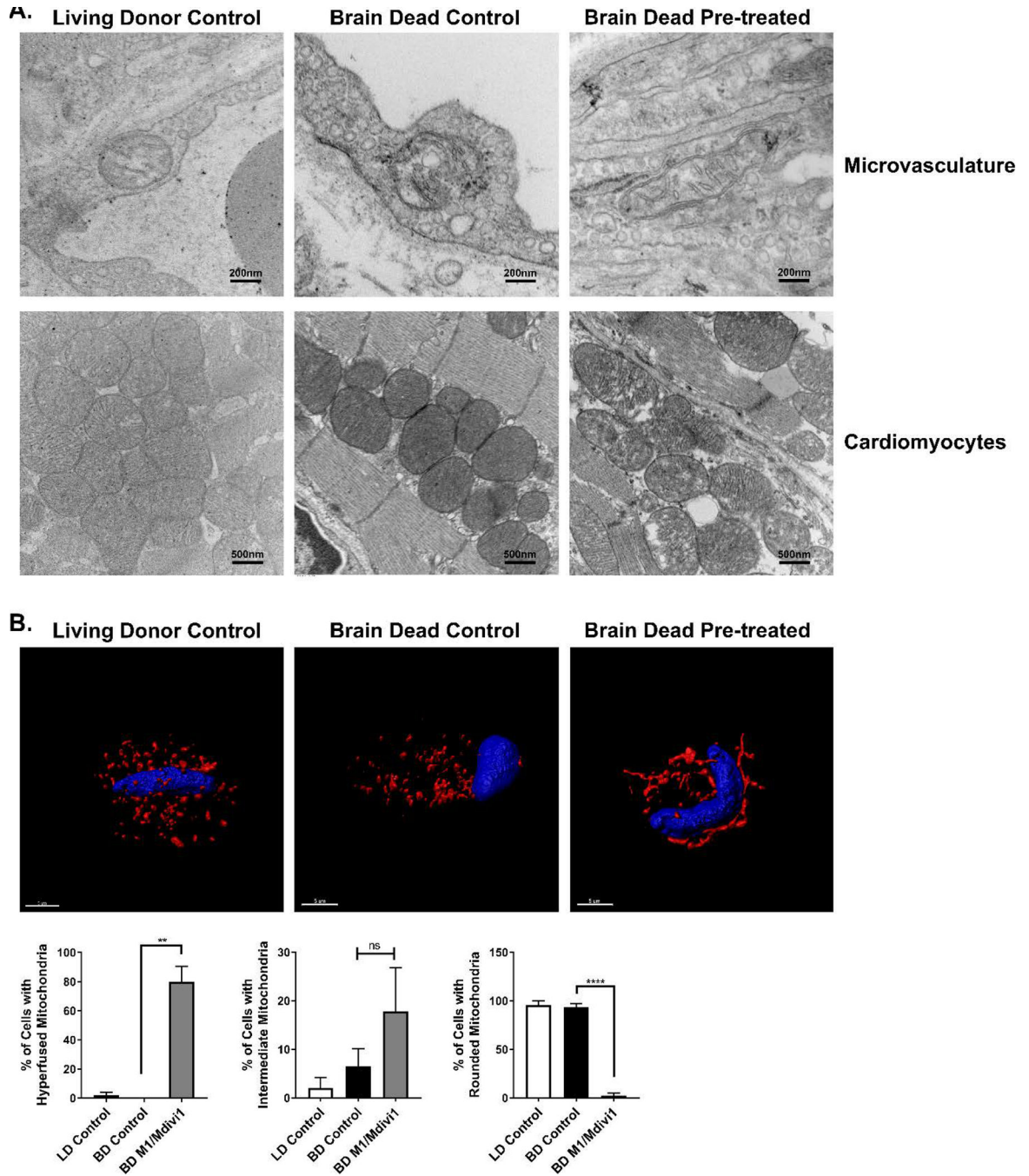
Author Manuscript

Author Manuscript

Author Manuscript

Author Manuscript





**Figure-6: Donor Pre-treatment with M1/Mdivi1 Exerts Mitochondria-Elongating Effects on Cardiac ECs but not Cardiomyocytes.**

(A) Representative transmission electron microscopy images showing mitochondria in ECs but not in cardiomyocytes are morphologically elongated at the end of donor pre-treatment with M1/Mdivi1. (B) Representative 3D confocal images showing mitochondria in ECs isolated from M1/Mdivi1-pretreated donor hearts are elongated, and quantification of mitochondrial morphology performed as in Figure-1A (n=3 mice/group with 50 cells/group,

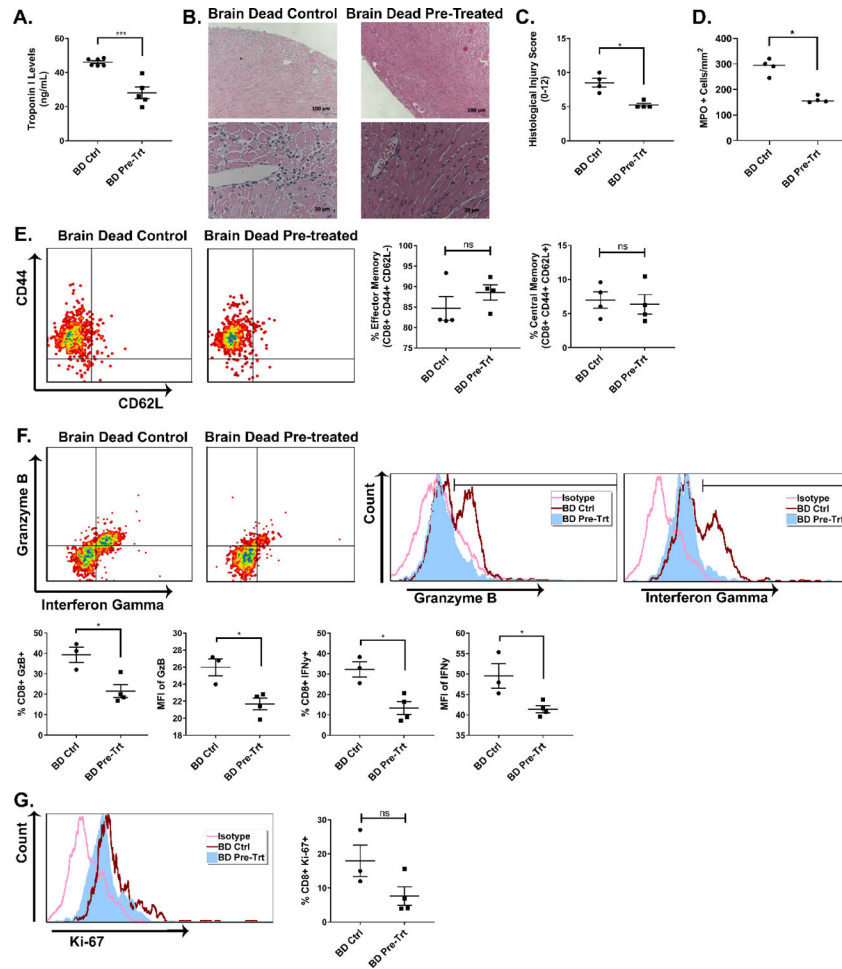
\*\*\* $p < 0.0001$ , \*\* $p < 0.01$ . Differences between BD control and BD M1/Mdivi1 groups were analyzed using Student's t-test).

Author Manuscript

Author Manuscript

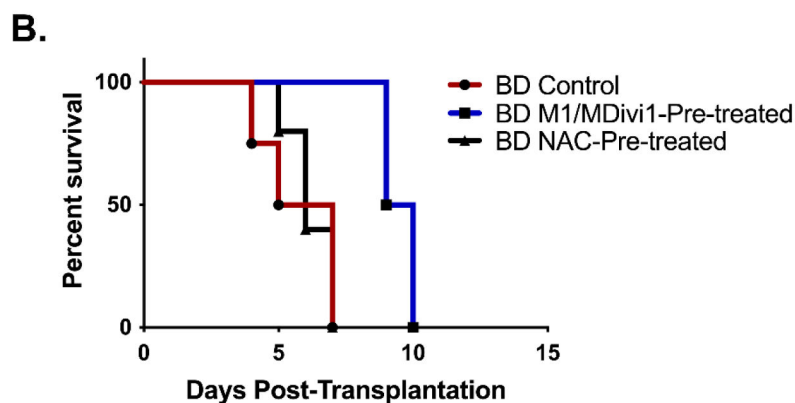
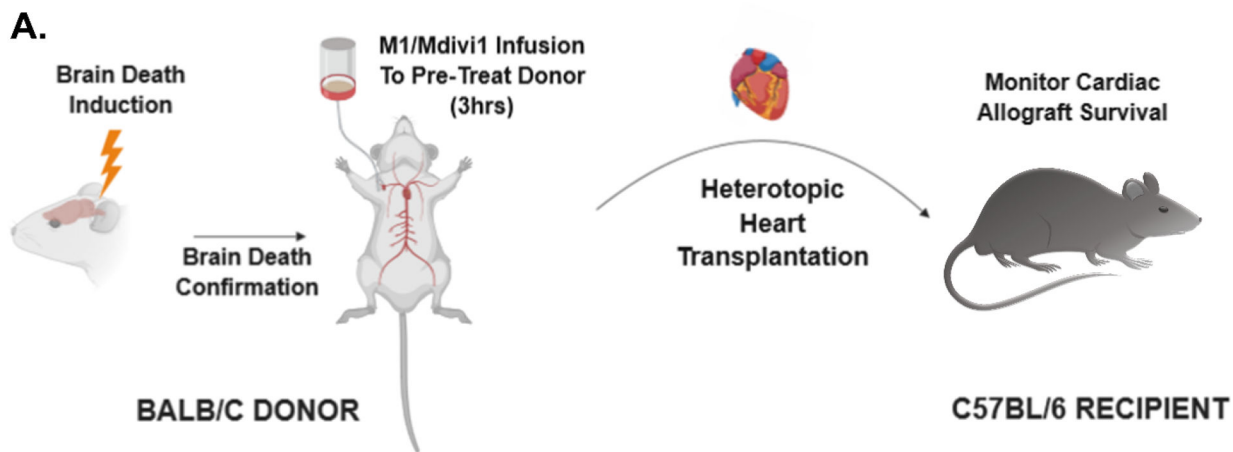
Author Manuscript

Author Manuscript



**Figure-7: Donor Pre-treatment with Mitochondrial Fusion Promoter/Fission Inhibitor Protects Cardiac Allografts from Injury and Mitigates T-cell Alloimmune Response.**

(A) Cardiac injury, reflected by serum cardiac troponin I levels at 48 hours post-transplant, is significantly reduced in mice receiving M1/Mdivi1-pretreated allografts. (B) Histological staining and (C) quantification analysis showing significantly less cardiac injury and immune infiltration in M1/Mdivi1-pretreated allografts vs untreated controls. (D) Brain-dead donor delivery of M1/Mdivi1 significantly reduces innate immune cell infiltrates as demonstrated by myeloperoxidase immunohistochemistry in M1/Mdivi1-pretreated allografts vs untreated controls. (E) Flow cytometry analyses showing no changes in effector memory ( $CD44^+ CD62L^-$ ) and central memory ( $CD44^+ CD62L^+$ ) compartments of  $CD8^+$  T-cells in M1/Mdivi1-pretreated allografts vs untreated controls. (F)  $CD8^+$  T-cells infiltrating cardiac allografts have significantly lower granzyme-B and interferon gamma production in M1/Mdivi1-pretreated allografts compared to those infiltrating untreated controls, reflected by both frequencies of T-cells producing these cytotoxic proteins and mean fluorescence intensity (MFI) of the proteins in T-cells. (G) Flow cytometry analyses showing no changes in proliferative index (Ki-67) in infiltrating  $CD8^+$  T-cells (\*\* $p < 0.005$ , \* $p < 0.05$ ). Differences between untreated controls and M1/Mdivi1-treated groups were analyzed using Mann-Whitney test for histological analysis and Student's t-test for the remaining analyses)



**Figure-8: Donor Pre-treatment with Mitochondrial Fusion Promoter/Fission Inhibitor Significantly Prolongs Cardiac Allograft Survival.**

(A) Schematics of the brain-dead murine transplant model. (B) Percent survival of transplanted cardiac allografts showing donor pre-treatment with M1/Mdivi1 after brain death leads to significantly improved survival outcomes (n=4, p=0.0091 by Mantel-Cox test), an effect that is not observed with pre-treatment of the antioxidant, N-acetylcysteine, alone.

**Table-1:**

Summary of MFI of Surface Markers and Proliferative Index at 6 and 24 Hours Post-Reperfusion in M1/Mdivi1-Pretreated MCECs or Untreated Controls (n=3, \*\*\*\*p<0.0001, \*\*\*p<0.005, \*\*p<0.01, \*p<0.05)

Molecule Name	6 Hours Post-Reperfusion		24 Hours Post-Reperfusion	
	Untreated Control (MFI)	Pretreated Cells (MFI)	Untreated Control (MFI)	Pretreated Cells (MFI)
<b>VCAM-1</b>	<b>262.60±9.97</b>	<b>210.70±4.92***</b>	<b>391.10±5.72</b>	<b>232.20±5.50****</b>
ICAM-1	20.16±1.84	27.68±8.37	14.73±0.15	15.29±0.31
P-selectin	18.20±0.06	18.85±0.20	12.54±0.38	13.51±0.08
CD80	50.58±0.18	50.95±0.85	29.76±0.81	28.92±0.78
<b>MHC-I</b>	<b>246.50±1.40</b>	<b>221.60±4.56**</b>	<b>191.90±17.16</b>	<b>208.90±14.61</b>
<b>PD-L1</b>	<b>10.46±0.09</b>	<b>12.47±0.13****</b>	<b>10.68±1.18</b>	<b>14.64±1.92**</b>
<b>Ki-67</b>	<b>95.73±0.15</b>	<b>88.04±0.73***</b>	<b>68.32±7.56</b>	<b>26.98±13.33*</b>

**Table-2:**

Summary of MFI of Surface Markers and Proliferative Index at 48 Hours Post-transplant in ECs Isolated from Brain-Dead Control or Pretreated Hearts (n=4 mice/group)

Molecule Name	BD Control	BD Pretreated
VCAM-1	104.80±10.16	106.60±15.61
P-selectin	215.20±170.10	65.79±11.83
CD80	230.50±75.34	186.10±43.43
MHC-I	83.77±6.81	85.71±17.30
PD-L1	54.96±9.40	62.18±6.22
Ki-67	24.79±6.39	22.44±5.46

Author Manuscript

Author Manuscript

Author Manuscript

Author Manuscript