



# COVID-19

## COVID DATA TRACKER WEEKLY REVIEW

Print

Interpretive Summary for October 29, 2021

[Subscribe to the Weekly Review](#)

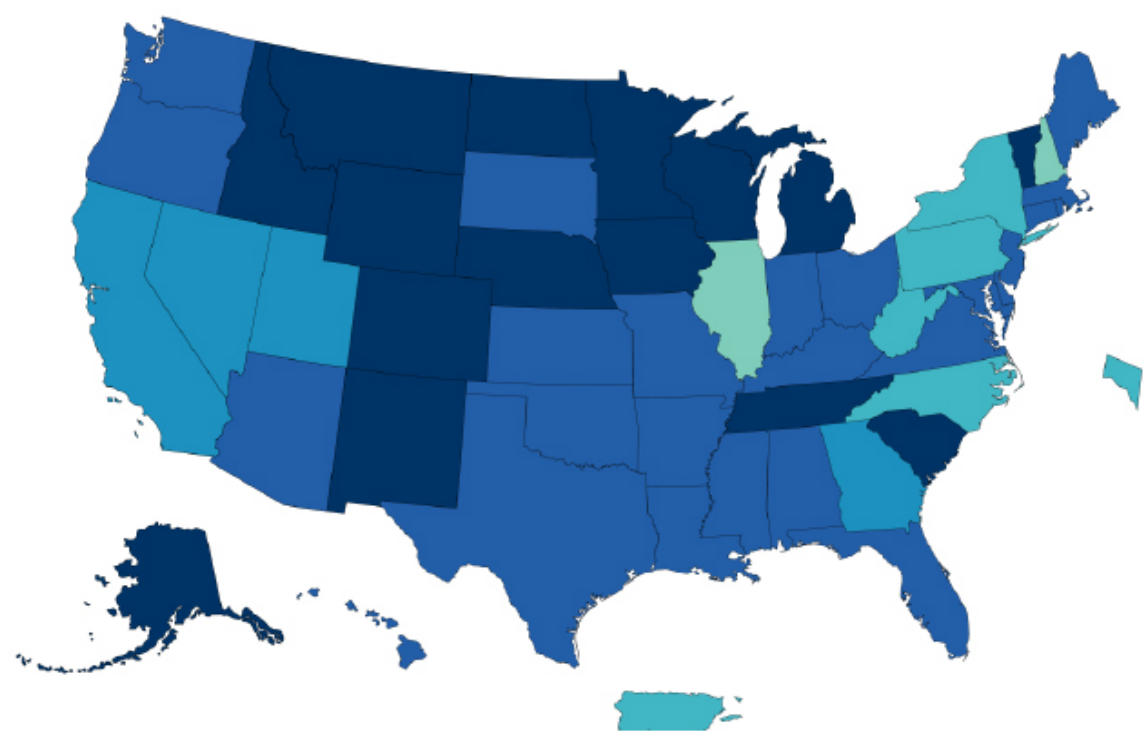
## Give Me a Boost!

## COVID DATA TRACKER

**NOW AVAILABLE**

# State-level Booster Dose Data

<b>View:</b>	<b>Show:</b>	<b>Metric:</b>	<b>Population:</b>
<input type="radio"/> Total Doses	<input type="radio"/> At Least One Dose	<input type="radio"/> Count	<input checked="" type="radio"/> Total Population
<input checked="" type="radio"/> People	<input type="radio"/> Fully Vaccinated	<input checked="" type="radio"/> % of Fully Vaccinated	<input type="radio"/> Population ≥ 18 Years of Age
	<input checked="" type="radio"/> Booster Dose		<input type="radio"/> Population ≥ 50 Years of Age
			<input type="radio"/> Population ≥ 65 Years of Age



Percent of Fully Vaccinated Population that has received a Booster Dose

No Data 
  0 
  .1 - 3.9% 
  4.0 - 5.9% 
  6.0 - 7.9% 
  8.0 - 9.9% 
  10% +

Find the latest data on **CDC's COVID Data Tracker**

Data as of 10/28/21



321563-CM

COVID-19 [cases](#), [hospitalizations](#), and [deaths](#) continue to decline, but many parts of the country are still experiencing high [levels of community transmission](#). CDC's [COVID Data Tracker](#) shows that, as of October 28, 2021, 221 million people in the United States have received at least [one dose](#) of a COVID-19 vaccine. 191 million people are [fully vaccinated](#). More than 15 million people have received a COVID-19 vaccine [booster dose](#).\*

Last week, the U.S. [Food and Drug Administration \(FDA\)](#) [expanded](#) the use of a COVID-19 vaccine booster dose for [certain people](#). CDC now recommends that everyone 18 years and older who received the [Johnson & Johnson/Janssen](#) COVID-19 vaccine two or more months ago receive a booster dose. For people who received a [Pfizer-BioNTech](#) or [Moderna](#) COVID-19 vaccine, certain groups are now eligible for a booster dose at 6 months or more after their initial 2-dose series. This includes people ages 65 years and older, and people ages 18 years and older who live [in long-term care settings](#), have [underlying medical conditions](#), or live or work in [high-risk settings](#).

Vaccination remains the best way to protect yourself. CDC's [COVID Data Tracker](#) shows that in August 2021, people who were unvaccinated were 11 times more likely to die from COVID-19 than people who were fully vaccinated. People who were unvaccinated were 12 times more likely to be [hospitalized](#) with COVID-19 compared to people who were fully vaccinated. Everyone should get vaccinated against COVID-19 as soon as they are eligible, including people who have already had COVID-19. To find a vaccine provider near you, visit [vaccines.gov](#) or your [state or local public health department website](#).

\*The count of people who received a booster dose includes anyone who is fully vaccinated who has received another dose of COVID-19 vaccine since August 13, 2021. This includes people who received [booster doses](#) and people who received [additional doses](#).

**Note to readers:** People who are [eligible](#) for a COVID-19 vaccine booster dose may choose which vaccine they receive as a booster dose. Some people may prefer the vaccine type that they originally received, and others may prefer to get a different booster. CDC's [recommendations](#) now allow for this type of mix and match dosing for booster shots

## Reported Cases

The current 7-day moving average of daily new cases (68,793) decreased 7.4% compared with the previous 7-day moving average (74,290). A total of 45,655,635 COVID-19 cases have been reported as of October 27, 2021.

45,655,635  
Total Cases Reported

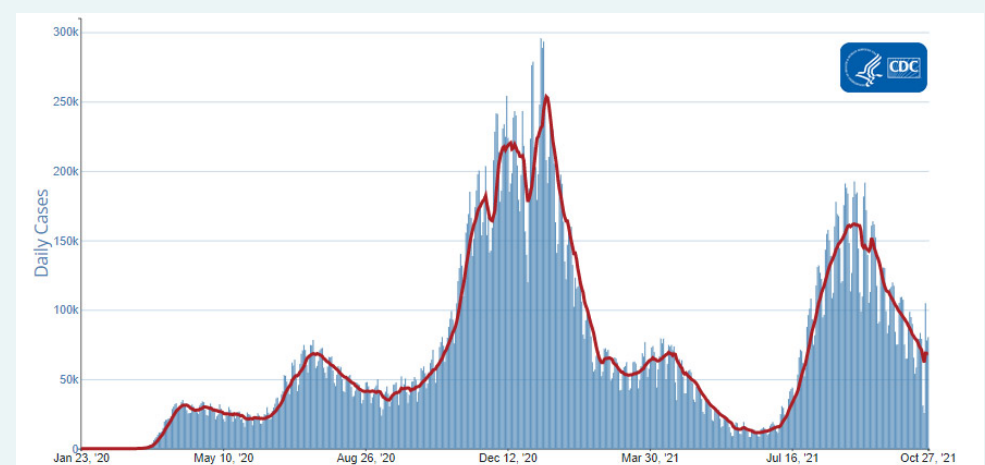
68,793  
Current 7-Day Average\*

74,290  
Prior 7-Day Average

-7.4%  
Change in 7-Day Average  
since Prior Week

## Daily Trends in COVID-19 Cases in the United States Reported to CDC

7-Day moving average



[View Larger](#)

[More Case Data](#)

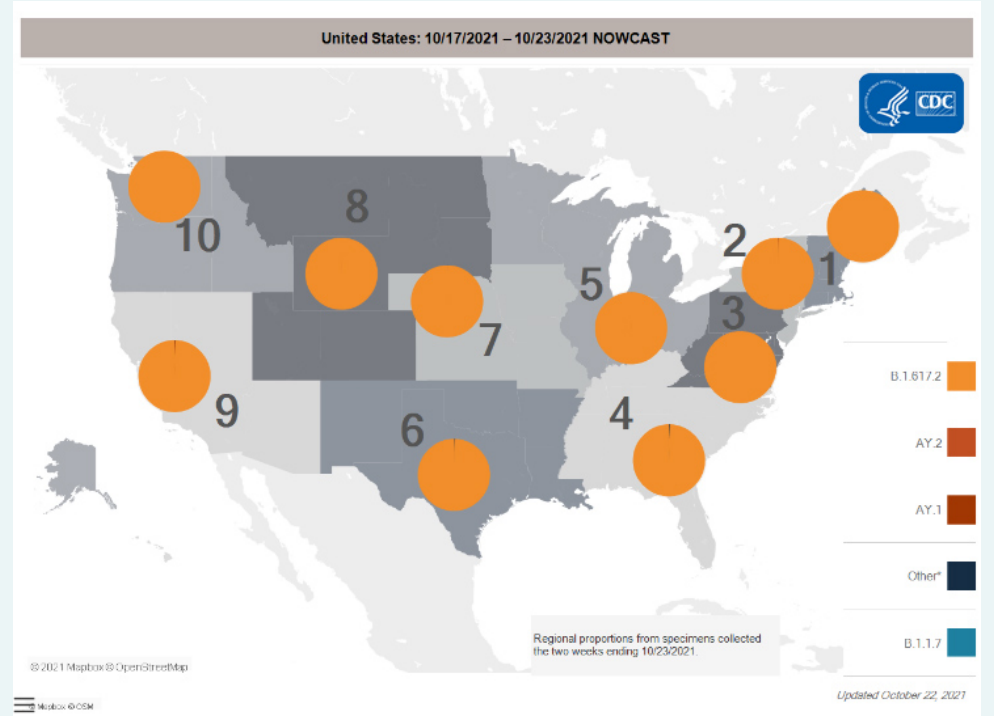
\*Historical cases are excluded from daily new cases and 7-day average calculations until they are incorporated into the dataset for the applicable date. Of 129,743 historical cases reported retroactively, 2,004 were reported in the current week and 3,280 were reported in the prior week.

## SARS-CoV-2 Variants

Currently, [Delta](#) is the only variant classified as a [Variant of Concern \(VOC\)](#) in the United States. [Nowcast projections](#)\* for the week ending October 23, 2021, estimate the national and regional proportions of the Delta variant to be greater than 99%.

## SARS-CoV-2 Variants Circulating in the United States

\*The median time from specimen collection to sequence data reporting is about 3 weeks. As a result, weighted estimates for the most recent few weeks may be unstable or unavailable. CDC's Nowcast is a data projection tool that helps fill this gap by generating timely estimates of variant proportions for variants that are circulating in the United States. View Nowcast estimates on CDC's COVID Data Tracker website on the [Variant Proportions](#) page.



[View Larger](#)

[More Variants Data](#)

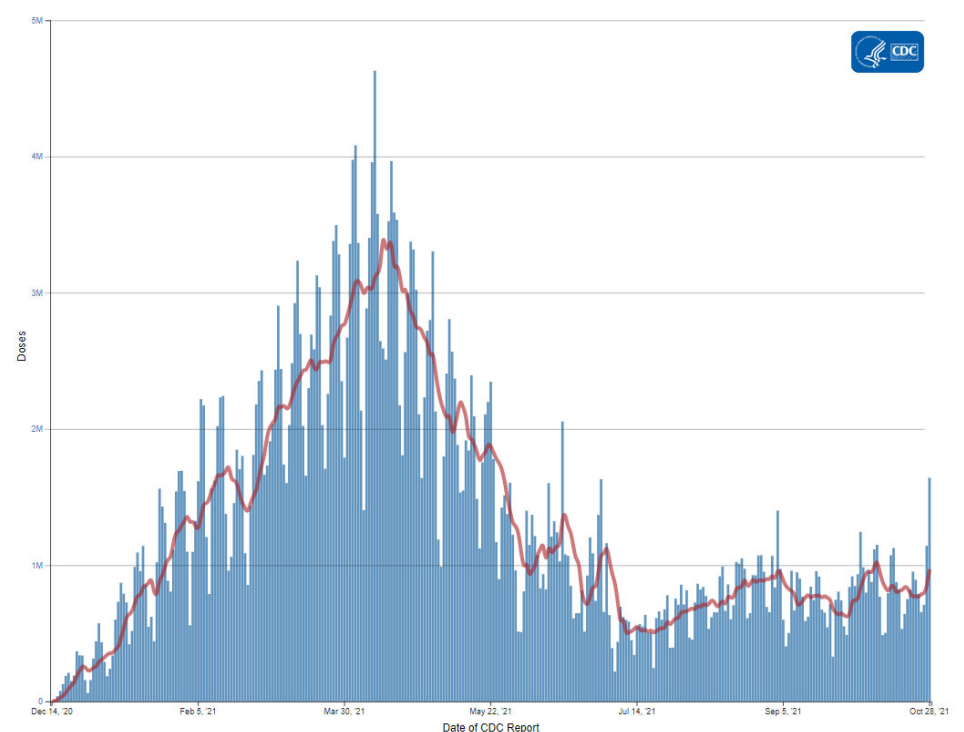
## Vaccinations

The U.S. COVID-19 Vaccination Program began December 14, 2020. As of October 28, 2021, 417.8 million vaccine doses have been administered. Overall, about 221.3 million people, or 66.7% of the total U.S. population, have received at least one dose of vaccine. About 191.2 million people, or 57.6% of the total U.S. population, have been fully vaccinated.\* About 15.4 million additional/booster doses in fully vaccinated people have been reported. As of October 28, 2021, the 7-day average number of administered vaccine doses reported (by date of CDC report) to CDC per day was 969,270, a 21.9% increase from the previous week.

CDC's COVID Data Tracker [Vaccination Demographic Trends](#) tab shows vaccination trends by age group. As of October 28, 2021, 96.9% of people ages 65 years or older have received at least one dose of vaccine and 84.9% are fully vaccinated. More than three-quarters (79.8%) of people ages 18 years or older have received at least one dose of vaccine and 69.2% are fully vaccinated. For people ages 12 years or older, 78% have received at least one dose of vaccine and 67.4% are fully vaccinated.

## Daily Change in the Total Number of Administered COVID-19 Vaccine Doses Reported to CDC by the Date of CDC Report, United States

7-Day moving average



[View Larger](#)

[More Vaccination Data](#)

**417,795,537**  
Vaccines Administered

**221,348,530**  
People who received at least one dose

**191,242,432**  
People who are fully vaccinated\*

**66.7%**  
Percentage of the US population that has

**57.6%**  
Percentage of the US population that has been fully vaccinated\*



received at least one dose

+0.5  
Percentage point  
increase from last week

+0.4  
Percentage point  
increase from last week

\*Represents the number of people who have received the second dose in a two-dose COVID-19 vaccine series (such as the [Pfizer](#) or [Moderna](#) vaccines) or one dose of the single-shot [Johnson & Johnson's Janssen](#) vaccine.

## Hospitalizations

### New Hospital Admissions

The current 7-day daily average for October 20–October 26, 2021, was 5,404. This is a 10.5% decrease from the prior 7-day average (6,037) from October 13–October 19, 2021.

3,223,806  
Total New Admissions

5,404  
Current 7-Day Average

6,037  
Prior 7-Day Average

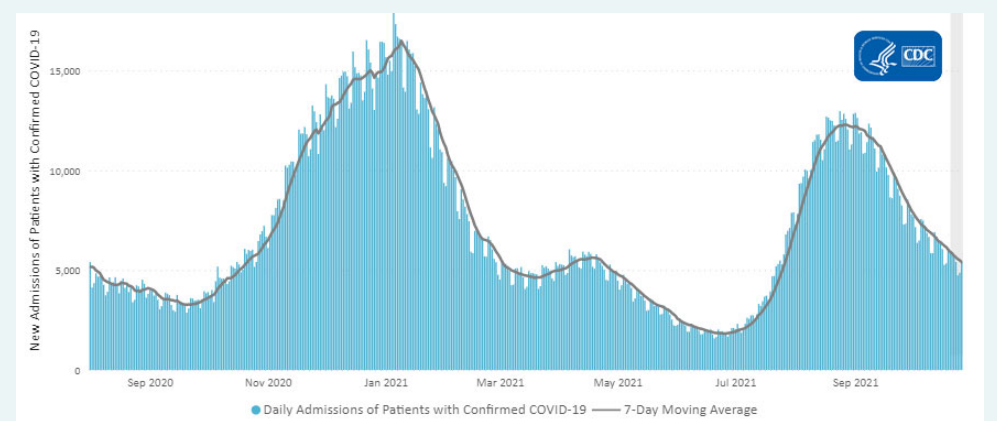
-10.5%  
Change in 7-Day Average

The start of consistent reporting of hospital admissions data was August 1, 2020.

## COVID-NET: Trends in Hospitalizations of Non-Hispanic Black People

CDC's [Coronavirus Disease 2019-Associated Hospitalization Surveillance Network \(COVID-NET\)](#) shows that since the start of the pandemic, people from racial and ethnic minority groups have experienced disproportionately higher rates of COVID-19-associated hospitalizations compared to non-Hispanic White people. While rates of hospitalizations have started to decrease in all racial and ethnic groups, the hospitalization rate for non-Hispanic Black people remains higher than other groups. For the week ending October 9, 2021, preliminary data not adjusted for age show rates of COVID-19-associated hospitalizations in non-Hispanic Black people were 9.8 per 100,000 population—17% higher than rates in non-Hispanic White people (8.4 per 100,000).

### Daily Trends in Number of New COVID-19 Hospital Admissions in the United States

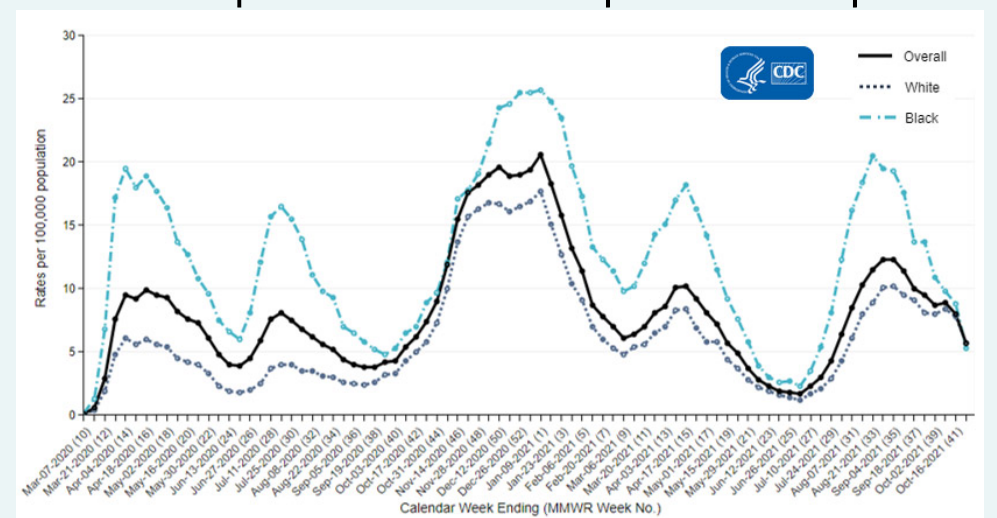


[View Larger](#)

New admissions are pulled from a 10 am EST snapshot of the HHS Unified Hospital Timeseries Dataset. Due to potential reporting delays, data from the most recent 7 days, as noted in the figure above with the grey bar, should be interpreted with caution. Small shifts in historic data may also occur due to changes in the Centers for Medicare and Medicaid Services (CMS) Provider of Services file, which is used to identify the cohort of included hospitals.

[View Hospital Data](#)

### Trends in Hospitalizations of Non-Hispanic Black People



[View Larger](#)

The Coronavirus Disease 2019 (COVID-19)-Associated Hospitalization Surveillance Network (COVID-NET) is an additional source for hospitalization data collected through a network of more than 250 acute-care hospitals in 14 states (representing ~10% of the U.S.).

white people (8.7 per 100,000).

\*Additional information on [racial and ethnic disparities](#) in rates of COVID-19-associated hospitalizations can be found in a new report using COVID-NET data [here](#) .

population). Detailed data on patient demographics, including race/ethnicity, underlying medical conditions, medical interventions, and clinical outcomes, are [standardized case reporting form](#).

[More COVID-NET Data](#)

## Deaths

The current 7-day moving average of new deaths (1,129) has decreased 9.4% compared with the previous 7-day moving average (1,247). As of October 27, 2021, a total of 740,348 COVID-19 deaths have been reported in the United States.

**740,348**  
Total Deaths Reported

**1,129**  
Current 7-Day Average\*

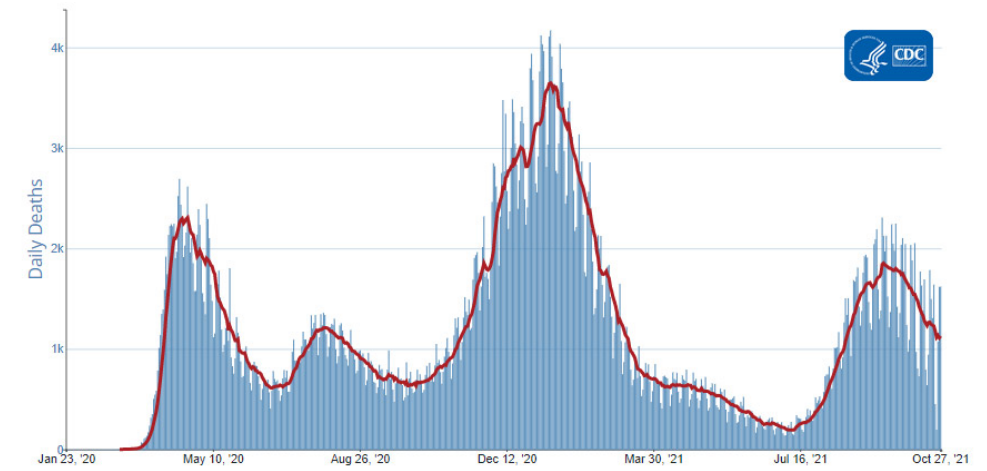
**1,247**  
Prior 7-Day Average

**-9.4%**  
Change in 7-Day Average Since Prior Week

\*Historical deaths are excluded from the daily new deaths and 7-day average calculations until they are incorporated into the dataset by their applicable date. Of 10,687 historical deaths reported retroactively, 224 were reported in the current week; and 1,170 were reported in the prior week.

## Daily Trends in Number of COVID-19 Deaths in the United States Reported to CDC

7-Day moving average



[View Larger](#)

[More Death Data](#)

## Testing

The percentage of COVID-19 NAATs ([nucleic acid amplification tests](#))\* that are positive ([percent positivity](#)) has decreased from the previous week. The 7-day average of percent positivity from NAATs is now 4.9%. The 7-day average number of tests reported for October 15 –October 21, 2021, was 1,425,495, down 1.3% from 1,444,590 for the prior 7 days.

**618,049,268**  
Total Tests Reported

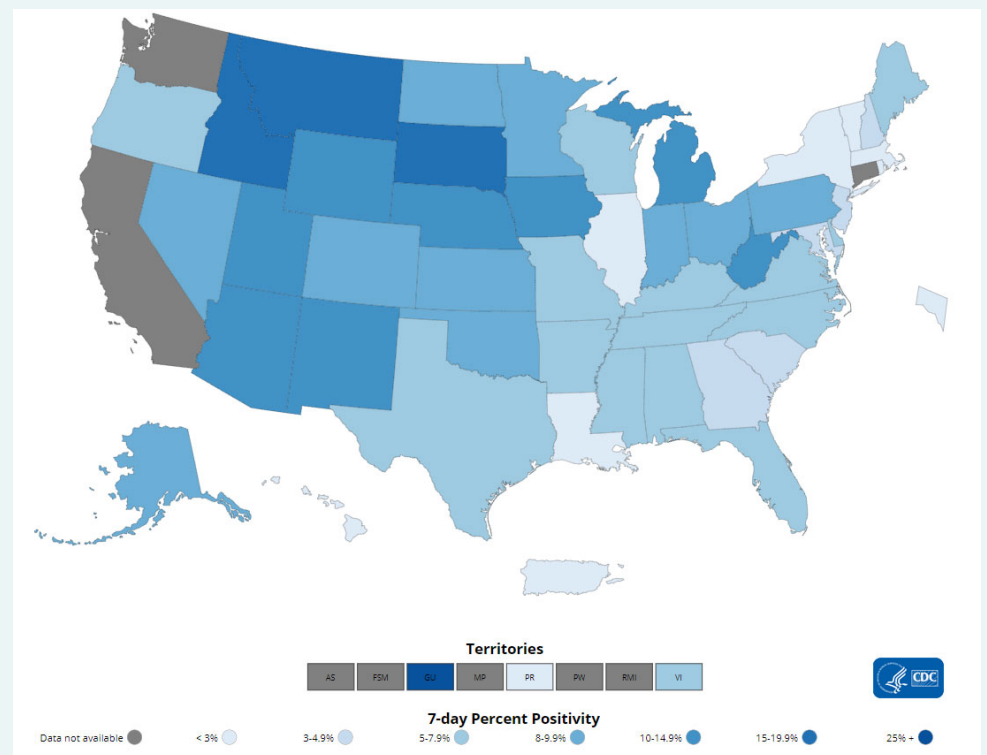
**1,425,495**  
7-Day Average Tests Reported

**4.9%**  
7-Day Average % Positivity

**5.1%**  
Previous 7-Day Average % Positivity

**-4.1%**  
Change in 7-Day Average % Positivity since Prior Week

## COVID-19 NAAT Laboratory Test 7-day Percent Positivity by State/Territory



[View Larger](#)

[More Testing Data](#)

## What's New

- Updated [Vaccination Trends](#) tab now shows trends in daily and cumulative booster doses administered at the national level.
- Updated [Compare Trends Across States and Regions](#) tab now allows users to compare case and death trends across up to 6 jurisdictions at the same time, by submission date.
- Links to new county-level datasets on data.cdc.gov are now available on the [County View](#) tab.
- New [How to Use COVID Data Tracker video](#) highlights the many ways [COVID Data Tracker](#) can be used to access important data, including cases and deaths, hospitalizations, variants, vaccination progress, and more.
- [Severity of Disease Among Adults Hospitalized with Laboratory-Confirmed COVID-19 Before and During the Period of SARS-CoV-2 B.1.617.2 \(Delta\) Predominance — COVID-NET, 14 States, January–August 2021](#)
- [COVID-19 Vaccination and Non-COVID-19 Mortality Risk — Seven Integrated Health Care Organizations, United States, December 14, 2020–July 31, 2021](#)
- [Laboratory-Confirmed COVID-19 Among Adults Hospitalized with COVID-19–Like Illness with Infection-Induced or mRNA Vaccine-Induced SARS-CoV-2 Immunity — Nine States, January–September 2021](#)
- [The Advisory Committee on Immunization Practices' Interim Recommendations for Additional Primary and Booster Doses of COVID-19 Vaccines — United States, 2021](#)