

Weekly Updates by Select Demographic and Geographic Characteristics

Provisional Death Counts for Coronavirus Disease 2019 (COVID-19)

Contents	
COVID-19 Mortality Overview	Health Disparities
Daily Updates of Totals by Week and State	Excess Deaths Associated with COVID-19
Weekly Updates by Select Demographic and Geographic Characteristics	Index of Available Data Files
	Technical Notes



Note: Provisional death counts are based on death certificate data received and coded by the National Center for Health Statistics as of October 20, 2021. Death counts are delayed and may differ from other published sources (see Technical Notes). Counts will be updated every Wednesday by 5pm. Additional information will be added to this site as available.

List of Topics

- [Sex and age](#)
- [Race and Hispanic origin](#)
- [Place of death](#)
- [Comorbidities and other conditions](#)
- [Excess deaths](#)
- [Additional data \(county, leading causes of death, etc.\)](#)

For the Index of Provisional COVID-19 Mortality Surveillance and Ad-hoc Data Files, [click here](#).

The provisional counts for coronavirus disease 2019 (COVID-19) deaths are based on a current flow of mortality data in the National Vital Statistics System. National provisional counts include deaths occurring within the 50 states and the District of Columbia that have been received and coded as of the date specified. It is important to note that it can take several weeks for death records to be submitted to National Center for Health Statistics (NCHS), processed, coded, and tabulated. Therefore, the data shown on this page may be incomplete, and will likely not include all deaths that occurred during a given time period, especially for the more recent time periods. Death counts for earlier weeks are continually revised and may increase or decrease as new and updated death certificate data are received from the states by NCHS. COVID-19 death counts shown here may differ from other published sources, as data currently are lagged by an average of 1–2 weeks.

Sex and Age

Table 1 has counts of deaths involving COVID-19 and other select causes of death by time-period in which the death occurred, sex and age group. For data on deaths involving COVID-19 by month, year, jurisdiction, sex, and age, [Click here to download](#). This data file contains two sets of age groups: (1) age-groups consistent with those used across CDC COVID-19 surveillance pages, and (2) age groups that are routinely included in NCHS mortality reports. When analyzing the file, the user should make sure to select only the desired age groups. Summing across all age categories provided will result in double counting deaths from certain age groups. For data on deaths involving COVID-19 by week, sex, and age (by NCHS age groups), [Click here to download](#). Data on deaths involving COVID-19 among ages 0–18 are available here: [Click here to download](#).

Table 1. Deaths involving coronavirus disease 2019 (COVID-19), pneumonia, and influenza reported to NCHS by time-period, jurisdiction of occurrence, sex and age-group.

Data as of:
10/20/2021

State			Sex		Age Group			
United States			All		All			
Year in which death occurred	Sex	Age Group	All Deaths involving COVID-19 [1]	Deaths from All Causes	Deaths involving Pneumonia [2]	Deaths involving COVID-19 and Pneumonia [2]	All Deaths involving Influenza [3]	Deaths involving Pneumonia, Influenza, or COVID-19 [4]
2020/2021	All Sexes	0-17 years	542	59,268	1,043	138	189	1,636
2020/2021	All Sexes	18-29 years	4,014	112,869	3,701	1,897	149	5,955
2020/2021	All Sexes	30-39 years	11,749	163,896	9,917	6,040	324	15,925
2020/2021	All Sexes	40-49 years	29,045	244,924	23,417	15,471	509	37,427
2020/2021	All Sexes	50-64 years	128,814	999,730	115,653	71,495	2,230	174,838
2020/2021	All Sexes	65-74 years	163,293	1,205,591	152,654	90,529	2,037	227,115
2020/2021	All Sexes	75-84 years	189,790	1,432,156	175,449	99,219	2,028	267,762
2020/2021	All Sexes	85 years and over	196,633	1,709,976	167,555	84,347	1,906	281,502
2020/2021	All Sexes	All Ages	723,880	5,928,410	649,389	369,136	9,372	1,012,160
2020/2021	Female	0-17 years	248	24,613	474	61	85	746
2020/2021	Female	18-29 years	1,554	30,360	1,449	763	70	2,307
2020/2021	Female	30-39 years	4,384	52,793	3,835	2,235	165	6,140
2020/2021	Female	40-49 years	10,441	88,932	8,959	5,536	224	14,068
2020/2021	Female	50-64 years	47,721	382,530	45,474	26,968	942	67,052
2020/2021	Female	65-74 years	65,185	505,725	61,424	35,722	889	91,661

Yearly

Monthly

Total

Microsoft Power BI

< 3 of 3 >



NOTE: Empty data cells represent counts between 1-9 that have been suppressed in accordance with NCHS confidentiality standards. Number of deaths reported in this table are the total number of deaths received and coded as of the date of analysis and may not represent all deaths that occurred in that period. Counts of deaths occurring before or after the reporting period are not included in the table. Data during recent periods are incomplete because of the lag in time between when the death occurred and when the death certificate is completed, submitted to NCHS and processed for reporting purposes. This delay can range from 1 week to 8 weeks or more, depending on the jurisdiction and cause of death. United States death counts include the 50 states, plus the District of Columbia and New York City. New York state estimates exclude New York City.

[1] Deaths with confirmed or presumed COVID-19, coded to ICD-10 code U07.1.

[2] Counts of deaths involving pneumonia (J12.0-J18.9) include pneumonia deaths that also involve COVID-19 and exclude pneumonia deaths involving influenza.

[3] Counts of deaths involving influenza (J09-J11) include deaths with pneumonia or COVID-19 also listed as a cause of death.

[4] Deaths with confirmed or presumed COVID-19, pneumonia, or influenza, coded to ICD-10 codes U07.1 or J09-18.9.

Provisional Death Counts for Coronavirus Disease 2019 (COVID-19) By Week of Death

Select Sex

All Sex

Select Measure

COVID-19 Deaths

Select Age Group

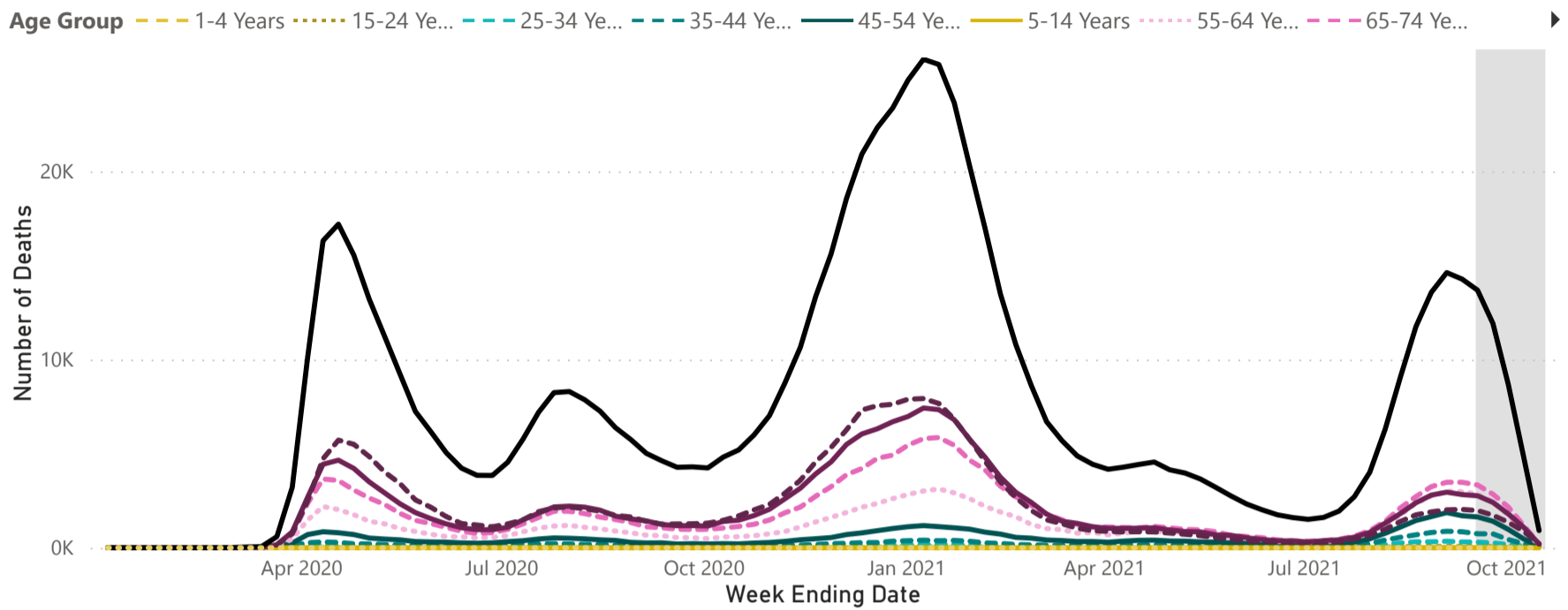
All

Reporting Period

Week ending 1/4/2020 through 10/16/2021

Data represented in the gray shaded area are incomplete. Deaths counts will be updated as additional data are received.

Provisional Death Counts, by Week Ending Date and Age Group



NOTE: Provisional death counts are based on death certificate data received and coded by NCHS as of the date of analysis and do not represent all deaths that occurred in that period. Data for the most recent 5 weeks (shown in the gray shaded area) are typically less than 90% complete, with lower levels of completeness in more recent weeks. Death counts are updated as additional deaths are received and coded.

SOURCE: NCHS, National Vital Statistics System. Estimates are based on provisional data.

Microsoft Power BI

< 1 of 2 >

↶ ↷

Race and Hispanic origin

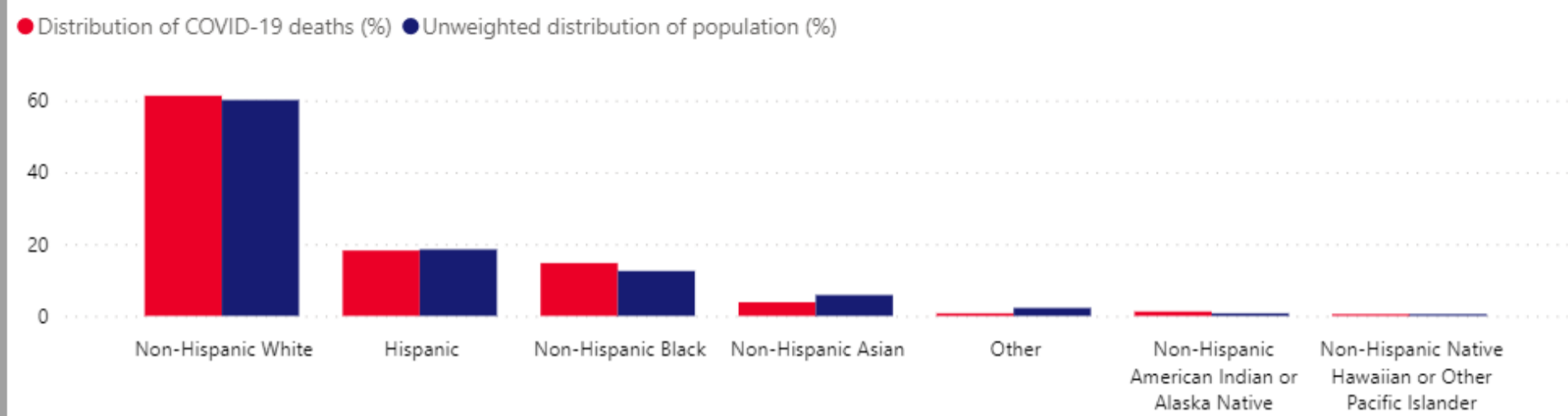
Data by race and Hispanic origin are available at the national, state, and county level. Data by race and Hispanic origin is also available by age at the national and state level. [Click here](#) to visit the NCHS Health Disparities page.

Figure 1. Crude and age-adjusted percents of COVID-19 deaths and unweighted population distributions by race and Hispanic origin

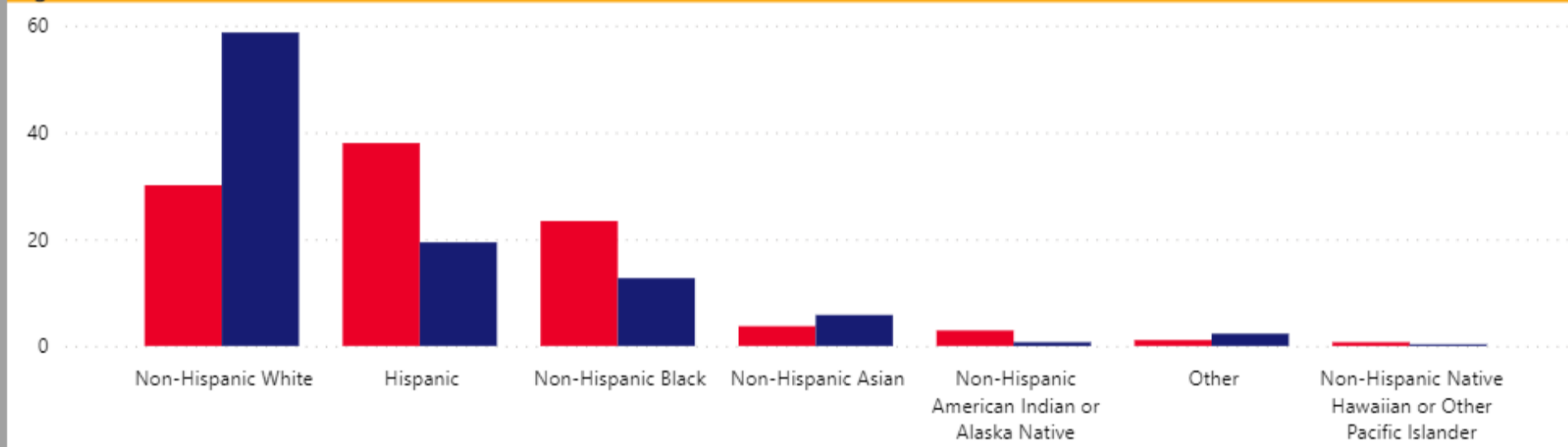
Select a jurisdiction:

United States

Unadjusted for age



Age - standardized



Place of death

Table 2 presents death counts involving COVID-19 and other select causes of death by time-period in which the death occurred, and the place of death. For data on deaths involving COVID-19 by time-period, jurisdiction and the place of death,

[Click here to download](#)

For data on deaths involving COVID-19 by time-period, jurisdiction, place of death, and age group,

[Click here to download](#)

Table 2. Deaths involving coronavirus disease 2019 (COVID-19), pneumonia, and influenza reported to NCHS by time-period, jurisdiction of occurrence, and place of death.

Data as of:
10/20/2021

State		Place of Death						
United States		All						
Year in which death occurred	State	Place of Death	All Deaths involving COVID-19 [1]	Deaths from All Causes	Deaths involving Pneumonia [2]	Deaths involving COVID-19 and Pneumonia [2]	All Deaths involving Influenza [3]	Deaths involving Pneumonia, Influenza, or COVID-19 [4]
2020/2021	United States	Decedent's home	55,611	1,988,494	44,070	14,749	1,761	85,830
2020/2021	United States	Healthcare setting, dead on arrival	689	16,502	406	181	18	932
2020/2021	United States	Healthcare setting, inpatient	487,895	1,860,690	490,223	304,158	5,946	679,523
2020/2021	United States	Healthcare setting, outpatient or emergency room	24,172	351,432	18,720	8,000	403	35,274
2020/2021	United States	Hospice facility	21,625	359,889	28,073	10,741	429	39,368
2020/2021	United States	Nursing home/long term care facility	119,196	944,676	57,440	26,759	668	150,507
2020/2021	United States	Other	14,591	405,905	10,390	4,508	146	20,597
2020/2021	United States	Place of death unknown	113	1,027	82	48	1	148
2020/2021	United States	Total - All Places of Death	723,892	5,928,615	649,404	369,144	9,372	1,012,179

Yearly
Monthly
Total

Microsoft Power BI

< 3 of 3 >



NOTE: Empty data cells represent counts between 1-9 that have been suppressed in accordance with NCHS confidentiality standards. Number of deaths reported in this table are the total number of deaths received and coded as of the date of analysis and may not represent all deaths that occurred in that period. Counts of deaths occurring before or after the reporting period are not included in the table. Data during recent periods are incomplete because of the lag in time between when the death occurred and when the death certificate is completed, submitted to NCHS and processed for reporting purposes. This delay can range from 1 week to 8 weeks or more, depending on the jurisdiction and cause of death. United States death counts include the 50 states, plus the District of Columbia and New York City. New York state estimates exclude New York City.

[1] Deaths with confirmed or presumed COVID-19, coded to ICD-10 code U07.1.

[2] Counts of deaths involving pneumonia (J12.0-J18.9) include pneumonia deaths that also involve COVID-19 and exclude pneumonia deaths involving influenza.

[3] Counts of deaths involving influenza (J09-J11) include deaths with pneumonia or COVID-19 also listed as a cause of death.

[4] Deaths with confirmed or presumed COVID-19, pneumonia, or influenza, coded to ICD-10 codes U07.1 or J09-18.9.

Comorbidities and other conditions

Table 3 shows the types of health conditions and contributing causes mentioned in conjunction with deaths involving coronavirus disease 2019 (COVID-19). The number of deaths that mention one or more of the conditions indicated is shown for all deaths involving COVID-19 and by age groups. For over 5% of these deaths, COVID-19 was the only cause mentioned on the death certificate. For deaths with conditions or causes in addition to COVID-19, on average, there were 4.0 additional conditions or causes per death. For data on deaths involving COVID-19 by time-period, jurisdiction, and other health conditions, [Click here to download](#).

Table 3. Number of COVID-19 deaths with contributing conditions, by time-period, jurisdiction of occurrence, and age-group.

Data as of:
10/17/2021

State	Attribute	Condition Group	Condition											
United States	COVID-19 Deaths	All	All	Year in which death occurred	Conditions contributing to deaths where COVID-19 was listed on the death certificate [1]	All Ages	0-24 years	25-34 years	35-44 years	45-54 years	55-64 years	65-74 years	75-84 years	85+ years
2020/2021	Influenza and pneumonia	342,184	769	3,498	9,144	23,684	52,883	83,294	90,481	78,424				
2020/2021	Chronic lower respiratory diseases	61,722	94	269	618	1,846	6,909	15,536	20,175	16,274				
2020/2021	Adult respiratory distress syndrome	76,298	291	1,144	3,012	7,773	15,735	21,467	17,059	9,816				
2020/2021	Respiratory failure	275,980	565	2,403	6,667	17,733	41,413	68,439	75,594	63,161				
2020/2021	Respiratory arrest	14,913	35	142	324	835	1,920	3,106	3,947	4,604				
2020/2021	Other diseases of the respiratory system	31,815	131	401	927	2,236	5,061	7,718	8,355	6,986				
2020/2021	Hypertensive diseases	135,900	58	519	2,174	6,695	17,659	30,851	37,202	40,740				
2020/2021	Ischemic heart disease	75,271	21	130	523	2,237	7,677	16,559	23,351	24,772				
2020/2021	Cardiac arrest	85,927	236	981	2,543	6,579	14,010	20,554	21,343	19,680				
2020/2021	Cardiac arrhythmia	52,213	44	152	415	1,419	4,396	10,094	15,998	19,695				
2020/2021	Heart failure	52,859	34	169	474	1,476	4,388	9,685	15,294	21,338				
2020/2021	Cerebrovascular diseases	34,286	44	147	463	1,413	4,015	7,669	9,787	10,747				
2020/2021	Other diseases of the circulatory system	47,522	208	545	1,285	3,185	6,940	10,856	12,209	12,293				
2020/2021	Sepsis	69,529	204	718	2,148	5,802	13,033	19,629	17,285	10,709				
2020/2021	Malignant neoplasms	33,998	87	144	416	1,350	4,649	9,279	10,395	7,678				
2020/2021	Diabetes	111,521	175	802	2,763	8,173	19,329	30,770	29,810	19,697				

Yearly
Monthly
Total

Microsoft Power BI

< 3 of 3 >



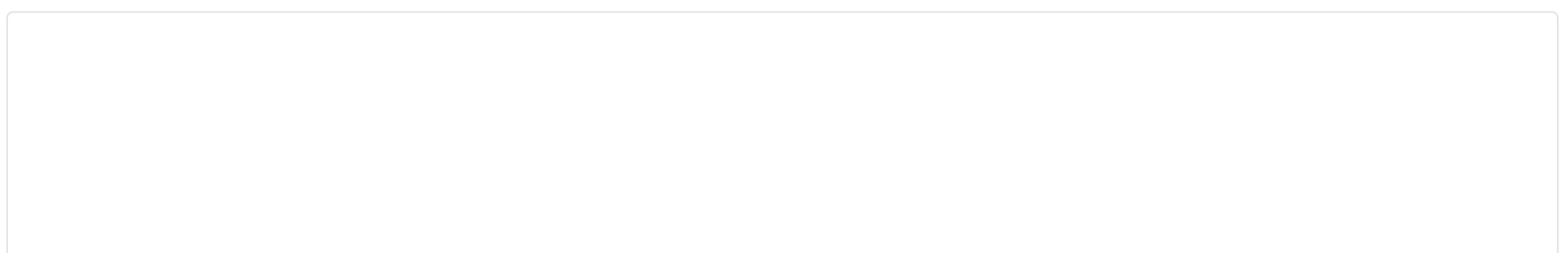
NOTE: Empty data cells represent counts between 1-9 that have been suppressed in accordance with NCHS confidentiality standards. Conditions contributing to the death were identified using the International Classification of Diseases, Tenth Revision (ICD-10). Deaths involving more than one condition (e.g., deaths involving both diabetes and respiratory arrest) were counted in both totals. To avoid counting the same death multiple times, the numbers for different conditions should not be summated. Some deaths involve more than one of the same condition category (e.g. deaths involving unintentional and intentional injury often include two or more injury ICD-10 codes), the number of mentions presented on the table above represents the number of instances where the condition was cited on the death certificate. Number of deaths and number of mentions reported in this table are tabulated from deaths received and coded as of the date of analysis and do not represent all deaths that occurred in that period. Data for this table are derived from a cut of the National Vital Statistics System (NVSS) database taken at a particular time, separate from other surveillance tables on this page which are tabulated on the date of update. As a result, the total number of COVID-19 deaths in this table may not match other surveillance tables on this page. Data during recent periods are incomplete because of the lag in time between when the death occurred and when the death certificate is completed, submitted to NCHS and processed for reporting purposes. This delay can range from 1 week to 8 weeks or more, depending on the jurisdiction and cause of death. United States death counts include the 50 states, plus the District of Columbia and New York City. New York state estimates exclude New York City.

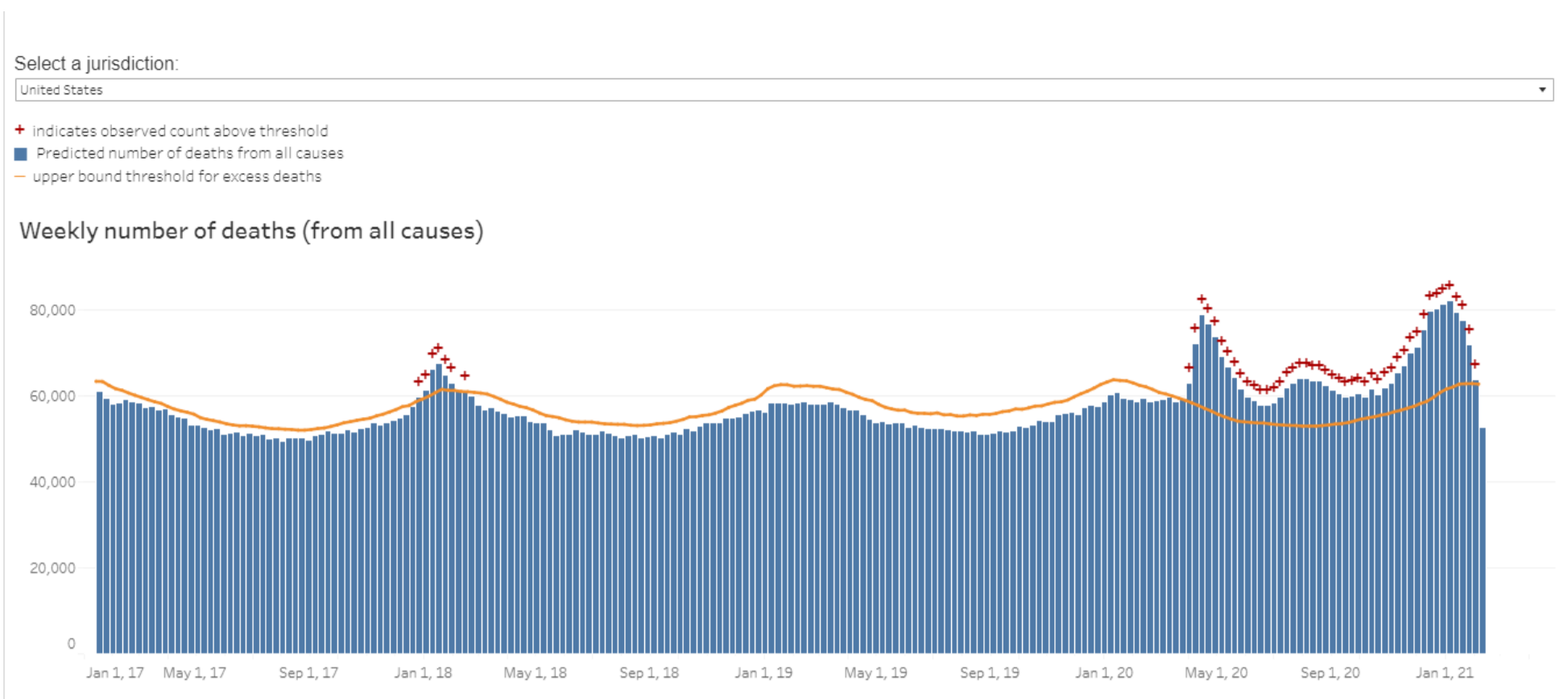
[1] Deaths with confirmed or presumed COVID-19, coded to ICD-10 code U07.1.

Excess deaths

See the [NCHS Excess Deaths Data Visualization](#).

This data visualization presents data on weekly counts of all-cause mortality by jurisdiction of occurrence. Counts of deaths in the most recent weeks are compared with historical trends to determine whether the number of deaths in recent weeks is significantly higher than expected.





Additional data (leading causes of death, county, etc.)

Leading causes of death



Weekly final data for 2014–2019

Weekly counts of leading causes of death based on final underlying cause mortality data for years 2014–2019, by state.



Weekly provisional data for 2020–2021

Weekly counts of leading causes of death based on provisional underlying cause mortality data for 2020–2021, by state.



Monthly final data for 2014–2019

Monthly counts of leading causes of death, including injury-related causes, based on final underlying cause mortality data for years 2014–2019, for the U.S.



Monthly provisional data for 2020–2021

Monthly counts of leading causes of death, including injury-related causes, based on provisional underlying cause mortality data for 2020–2021, for the U.S.

County-level data



Provisional COVID-19 Death Counts in the United States by County

Deaths involving COVID-19 and total deaths per county. Counties included in this file had 10 or more COVID-19 deaths at the time of analysis.



Provisional COVID-19 Deaths by County and Race and Hispanic Origin

Deaths involving COVID-19 and total deaths per county, by race and Hispanic origin for counties with more than 100 COVID-19 deaths.

Urban/Rural Status



Provisional COVID-19 Deaths by Urbanicity and Week

Deaths involving COVID-19 and total deaths, by week and urbanicity. Urbanicity is defined as metropolitan and non-metropolitan, using the NCHS Urban-Rural classification scheme.

Understanding the Numbers: Provisional Death Counts and COVID-19

Provisional death counts deliver the most complete and accurate picture of lives lost to COVID-19. They are based on death certificates, which are the most reliable source of data and contain information not available anywhere else, including comorbid conditions, race and ethnicity, and place of death.

How it Works

The National Center for Health Statistics (NCHS) uses incoming data from death certificates to produce provisional COVID-19 death counts. These include deaths occurring within the 50 states and the District of Columbia.

NCHS also provides summaries that examine deaths in specific categories and in greater geographic detail, such as deaths by county and by race and Hispanic origin.

COVID-19 deaths are identified using a new ICD-10 code. When COVID-19 is reported as a cause of death – or when it is listed as a “probable” or “presumed” cause — the death is coded as **U07.1**. This can include cases with or without laboratory confirmation.

Why These Numbers are Different

Provisional death counts may not match counts from other sources, such as media reports or numbers from county health departments. Counts by NCHS often track 1–2 weeks behind other data.

- **Death certificates take time to be completed.** There are many steps to filling out and submitting a death certificate. Waiting for test results can create additional delays.
- **States report at different rates.** Currently, 63% of all U.S. deaths are reported within 10 days of the date of death, but there is significant variation between states.
- **It takes extra time to code COVID-19 deaths.** While 80% of deaths are electronically processed and coded by NCHS within minutes, most deaths from COVID-19 must be coded by a person, which takes an average of 7 days.
- **Other reporting systems use different definitions or methods for counting deaths.**

Things to know about the data

Provisional counts are not final and are subject to change. Counts from previous weeks are continually revised as more records are received and processed.

Provisional data are not yet complete. Counts will not include all deaths that occurred during a given time period, especially for more recent periods. However, we can estimate how complete our numbers are by looking at the average number of deaths reported in previous years.

Death counts should not be compared across states. Some states report deaths on a daily basis, while other states report deaths weekly or monthly. State vital record reporting may also be affected or delayed by COVID-19 related response activities.

For more detailed technical information, visit the [Provisional Death Counts for Coronavirus Disease 2019 \(COVID-19\) Technical Notes](#) page.