

THE PATH FORWARD

DASH STRATEGIC PLAN

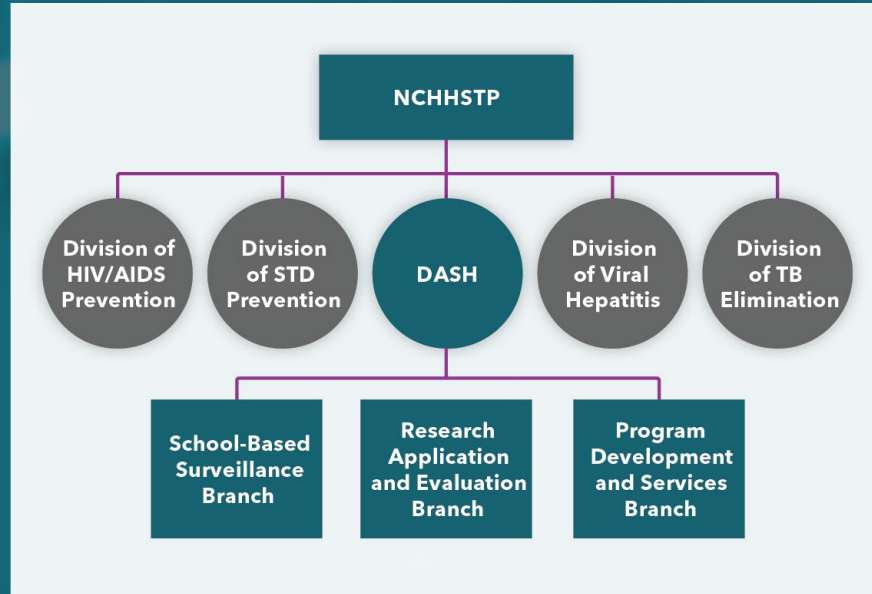


Centers for Disease
Control and Prevention
National Center for HIV/AIDS,
Viral Hepatitis, STD, and
TB Prevention



CDC is committed to preventing HIV, STDs, and unintended pregnancy among all youth.

DASH Organizational Structure



The ③ Core Functions in DASH's Public Health Prevention Approach



Collect and analyze information about adolescent behaviors and school health policies and practices through

- » The Youth Risk Behavior Surveillance System (YRBSS). Consisting of national, state, and city surveys, YRBSS is the only surveillance system of its kind in the United States.
- » School Health Profiles (Profiles). Containing data on school health policies, programs, and practices, Profiles provides information on student health to CDC and to state and local agencies for decision making.



Research and evaluate CDC-funded programs, emerging health issues, and new interventions.



Support and implement primary prevention of HIV, STDs, and unintended pregnancy through effective and promising school-based programs.

Partnerships: In order to broaden the reach and maximize potential impact of proven interventions, DASH relies on and values partnerships with state, territorial, and local education and health agencies and national non-governmental organizations.



DASH MISSION

To strengthen schools, families, and communities to prevent HIV, other STDs, and unintended pregnancy and help youth become healthy, successful adults.

DASH VISION

Through this plan, we imagine a future where all youth in the U.S. will be equipped with the knowledge, skills, and resources for a healthy adolescence and adulthood.

THE FOUNDATION OF DASH'S WORK

To maintain high-quality surveillance systems, translate research on what works, support school districts in implementing quality health education, establish the systems that connect students to health and behavioral services, and create safer and more supportive school environments.

DASH Approach to School-based HIV and STD Prevention

DASH promotes an evidence-based approach to health that school districts can implement to help prevent HIV, STDs, and unintended pregnancy among students, which involves

Delivering quality health education.

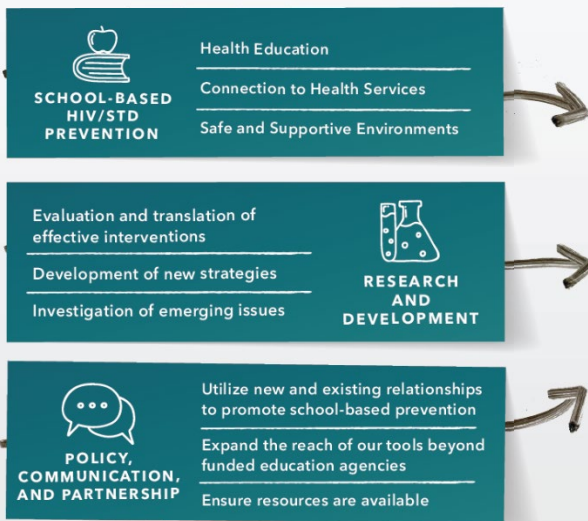
Increasing access to needed health services.

Establishing safe and supportive school environments.

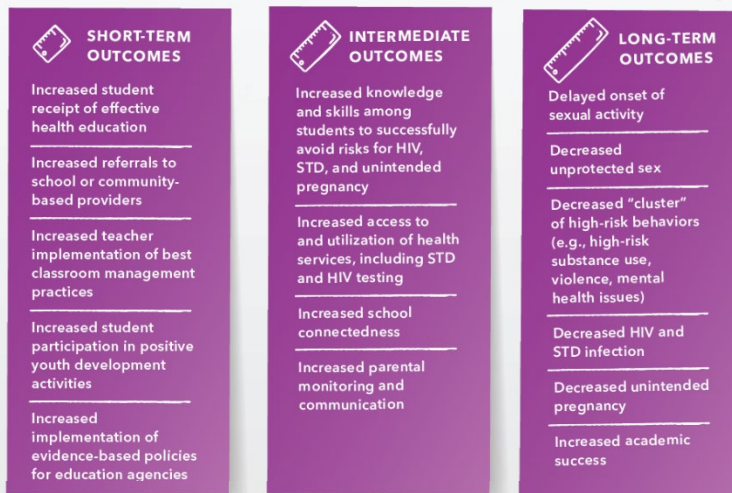
STRATEGIC APPROACHES

TO PROMOTING ADOLESCENT HEALTH THROUGH SCHOOL-BASED HIV AND STD PREVENTION

INPUTS



OUTCOMES AND EVALUATION



Monitored through Youth Risk Behavior Survey, School Health Profiles, and Program Evaluation Reports (PERs), depending on the level of focus (e.g., national, state, local).

A photograph of three students sitting at a table in a classroom, looking at a document together. The image is overlaid with a semi-transparent teal filter. The student on the left is a young man with glasses, the student in the middle is a young woman with long hair, and the student on the right is a young man with curly hair. They appear to be engaged in a collaborative learning activity.

**The Path Forward:
DASH 2020-2025 Strategic Plan**

DASH 2020 – 2025 Strategic Plan Components

EXECUTIVE SUMMARY

Summarizes core focus of the plan and highlights the planning process



STRATEGIC FRAMEWORK

- Highlights core purpose, functions and identity
- **DASH Approach**
 - Our efforts to provide school-based HIV/STD prevention strategies
 - Our role as a “platform” for conducting public health functions with and through schools
 - Our work to maintain organizational excellence



STRATEGIC PLAN

- **Vision** - describes the desired future state
- **Mission** - describes the division’s purpose
- **Goals** - defines projected five-year accomplishments
- **Strategic Imperatives** - high-level priority approaches for achieving
- **Objectives** - describes specific outcomes for each strategic imperative

2020-2025



STRATEGIC PLAN

- 1** Improve the capacity of schools, families, and communities to help youth become healthy, successful adults.
- 2** Decrease prevalence of behaviors and experiences that contribute to HIV, STDs, and unintended pregnancy, including priority health issues (i.e., sexual risk behaviors, high-risk substance use, violence victimization, poor mental health, and suicidality).
- 3** Advance health equity through the reduction of disparities in behaviors and experiences that contribute to HIV, STDs, and unintended pregnancy.
- 4** Increase the implementation of strategies that promote protective factors* that contribute to healthy youth development.

**Protective factors are individual or environmental characteristics, conditions, or behaviors that reduce the effects of stressful life events.*

A photograph of students in a classroom, overlaid with a semi-transparent teal filter. The students are engaged in a group activity, looking at a document or tablet together. The central focus is a young woman with long hair, smiling as she looks at the document. Other students are visible around her, some looking at the same document and others looking towards the camera.

DASH Strategic Framework

2020-2025 STRATEGIC PLAN

FRAMEWORK

VISION

We envision a future where all youth in the U.S. will be equipped with the knowledge, skills, and resources for a healthy adolescence and adulthood.

MISSION

DASH strengthens schools, families, and communities to prevent HIV, other STDs, and unintended pregnancies and help youth become healthy, successful adults.

GOALS

- 1 Improve the capacity of schools, families, and communities to help youth become healthy, successful adults.
- 2 Decrease prevalence of behaviors and experiences that contribute to HIV, STDs, and unintended pregnancy, including priority health issues (i.e. sexual risk behaviors, high-risk substance use, violence victimization, poor mental health, and suicidality).
- 3 Advance health equity through the reduction of disparities in behaviors and experiences that contribute to HIV, STDs, and unintended pregnancy.
- 4 Increase the implementation of strategies that promote protective factors that contribute to healthy youth development.

STRATEGIC IMPERATIVE A



Strengthen our programs, surveillance, and research through innovation and continuous quality improvement.

STRATEGIC IMPERATIVE B



Integrate priority populations and health issues across program, surveillance, and research.

STRATEGIC IMPERATIVE C



Expand reach to all school-aged youth.

STRATEGIC IMPERATIVE D



Strengthen and cultivate organizational excellence.

OBJECTIVES

- ✓ By 2022, develop a refined program model that provides opportunity for scaling up DASH's reach.
- ✓ By 2022, expand extramural partnerships and collaborations to support implementation of the refined program model.
- ✓ By 2023, support schools to make resilience, well-being, and good mental health ubiquitous and equitable.
- ✓ By 2025, CDC expertise is framing the national discussion on improving adolescent health.
- ✓ By 2025, establish a mechanism to hear from youth, parents, and families to inform DASH's strategies.

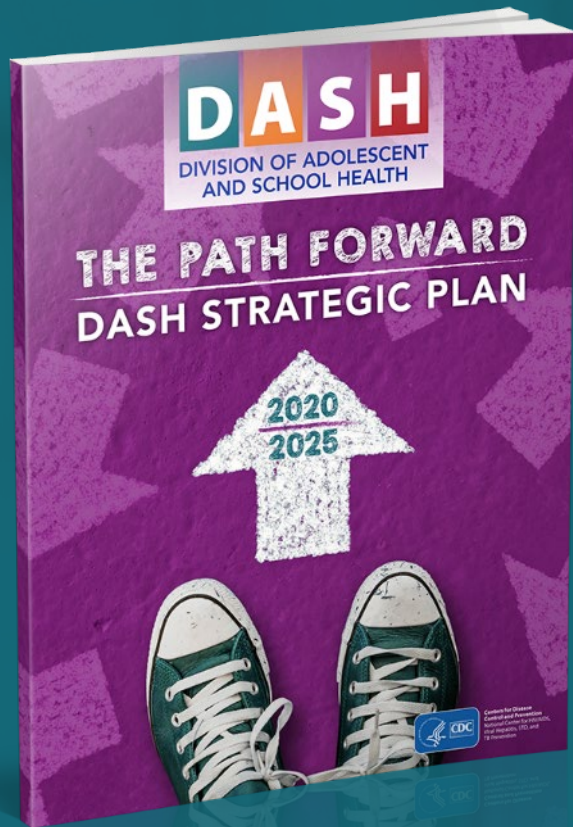
- ✓ By 2021, develop internal DASH roadmap for reducing adolescent health disparities related to race/ethnicity, sexual orientation, gender identity, and geography.
- ✓ By 2023, DASH staff have cultivated expertise around priority health issues and disparities.
- ✓ By 2023, DASH funding opportunity reflects revised program model and disparities roadmap.
- ✓ By 2025, DASH's outward facing products emphasize the health disparities used in the roadmap.

OBJECTIVES

- ✓ By 2025, expand program implementation to reach 15% of middle and high school students.
- ✓ By 2025, identify and pilot strategies to effectively reach elementary school students.
- ✓ By 2025, increase reach to rural and/or southern communities with priority populations.
- ✓ By 2025, establish mechanisms for directly communicating to youth, parents, and families.

- ✓ By 2022, develop a division-wide workforce plan that articulates staffing goals to achieve DASH's mission.
- ✓ By 2022, create a staff professional development program to increase the job-related knowledge and skills of all staff.
- ✓ By 2025, establish and maintain an organizational culture and climate that values all employees, practices mutual respect, and supports high performance.

EACH OBJECTIVE IS SUPPORTED BY ACTIVITIES CRITICAL TO THE EXECUTION OF THE PLAN.



Visit the DASH
Web site to
review the plan

www.cdc.gov/healthyyouth



Centers for Disease Control and Prevention
National Center for HIV/AIDS, Viral Hepatitis, STD, and TB Prevention
Division of Adolescent and School Health

www.cdc.gov/healthyyouth | 1-800-CDC-INFO

 @CDC_DASH

