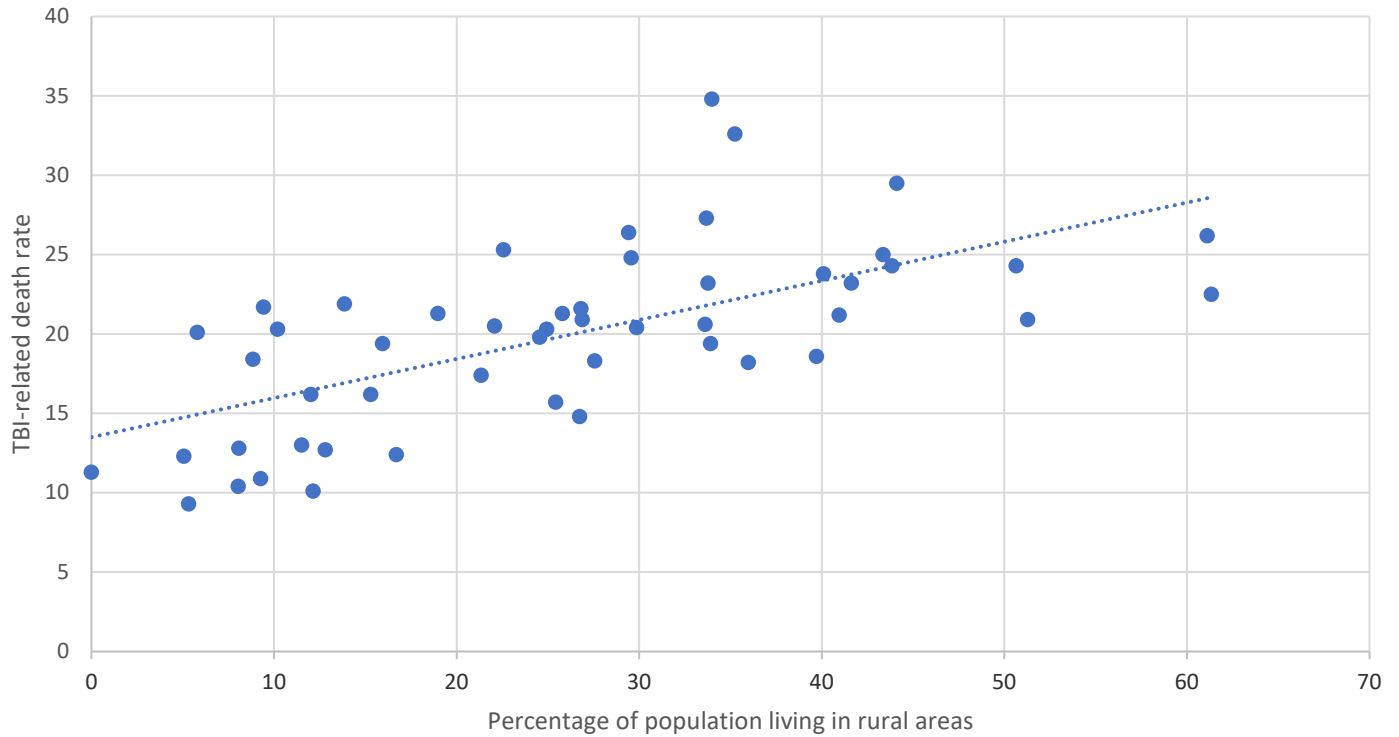


SUPPLEMENTARY FIGURE. Traumatic brain injury-related death rate by state and by percentage of population living in rural areas, United States, 2016--2018



Source: Percentage of population living in rural area obtained from the Census Bureau:
<https://www.census.gov/programs-surveys/geography/guidance/geo-areas/urban-rural/2010-urban-rural.htm>

STATE	Percentage of population living in rural area	TBI-related death rate
Alabama	40.96	21.2
Alaska	33.98	34.8
Arizona	10.19	20.3
Arkansas	43.84	24.3
California	5.05	12.3
Colorado	13.85	21.9
Connecticut	12.01	16.2
Delaware	16.7	12.4
District of Columbia	0	11.3
Florida	8.84	18.4
Georgia	24.93	20.3
Hawaii	8.07	12.8
Idaho	29.42	26.4
Illinois	11.51	13
Indiana	27.56	18.3
Iowa	35.98	18.2
Kansas	25.8	21.3
Kentucky	41.62	23.2
Louisiana	26.81	21.6
Maine	61.34	22.5
Maryland	12.8	12.7
Massachusetts	8.03	10.4
Michigan	25.43	15.7
Minnesota	26.73	14.8
Mississippi	50.65	24.3
Missouri	29.56	24.8
Montana	44.11	29.5
Nebraska	26.87	20.9
Nevada	5.8	20.1
New Hampshire	39.7	18.6
New Jersey	5.32	9.3
New Mexico	22.57	25.3
New York	12.13	10.1
North Carolina	33.91	19.4
North Dakota	40.1	23.8
Ohio	22.08	20.5
Oklahoma	33.76	23.2
Oregon	18.97	21.3
Pennsylvania	21.34	17.4
Rhode Island	9.27	10.9
South Carolina	33.67	27.3
South Dakota	43.35	25
Tennessee	33.61	20.6
Texas	15.3	16.2
Utah	9.42	21.7
Vermont	61.1	26.2
Virginia	24.55	19.8
Washington	15.95	19.4
West Virginia	51.28	20.9
Wisconsin	29.85	20.4
Wyoming	35.24	32.6