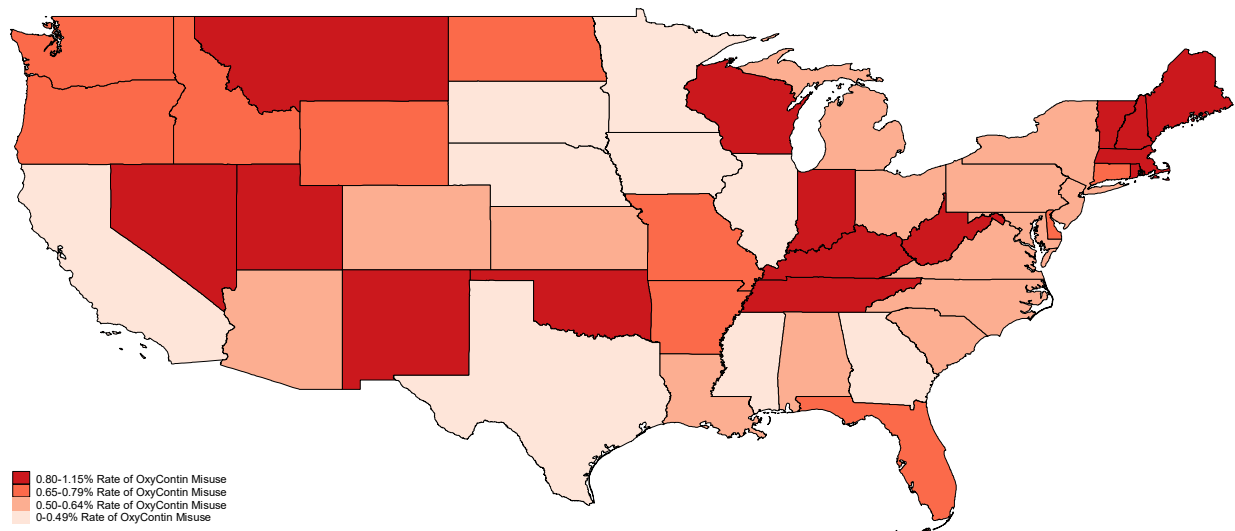


Appendix

Figure A1 – Geographic Variation in non-medical OxyContin use (2004-2009)



Source: Authors' calculations using National Survey of Drug Use and Health. We divide the states into quartiles based on 2004-2009 non-medical OxyContin use.

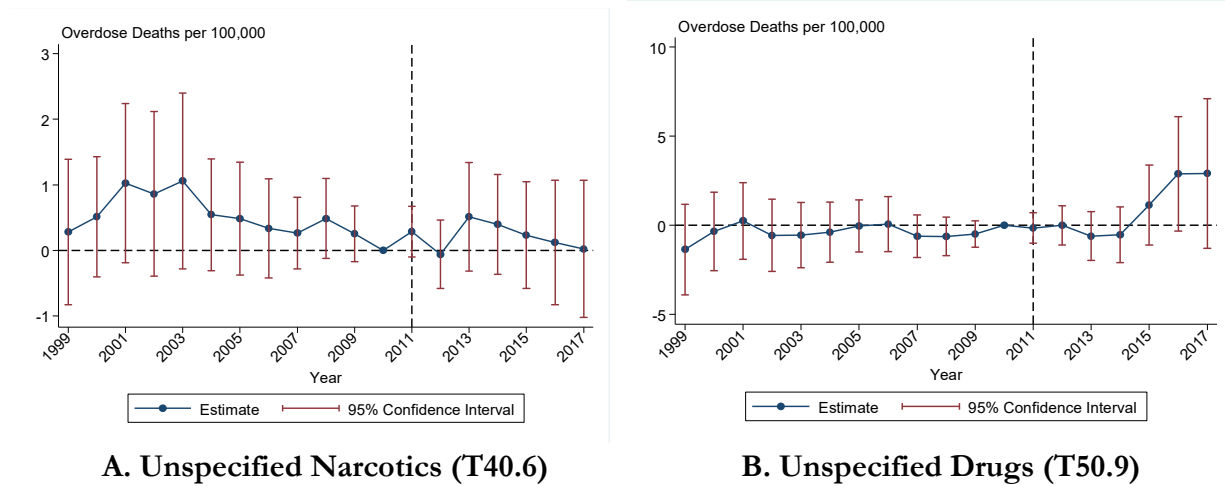


Figure A2: Non-Medical OxyContin Misuse Event Study Estimates for Unspecified Overdoses

Notes: 95% confidence intervals adjusted for state-level clustering. Outcome is overdoses per 100,000 for the specified category. We exclude overdoses that also specify another substance. The estimates reported in the figures are the coefficients on the pre-reformulation non-medical OxyContin use rate interacted with year indicators. The 2010 interaction is excluded and the corresponding estimate is normalized to 0. The estimated specification is represented by equation (1). The specification includes state and time fixed effects. We also jointly estimate effects for pain reliever misuse interacted with year indicators.