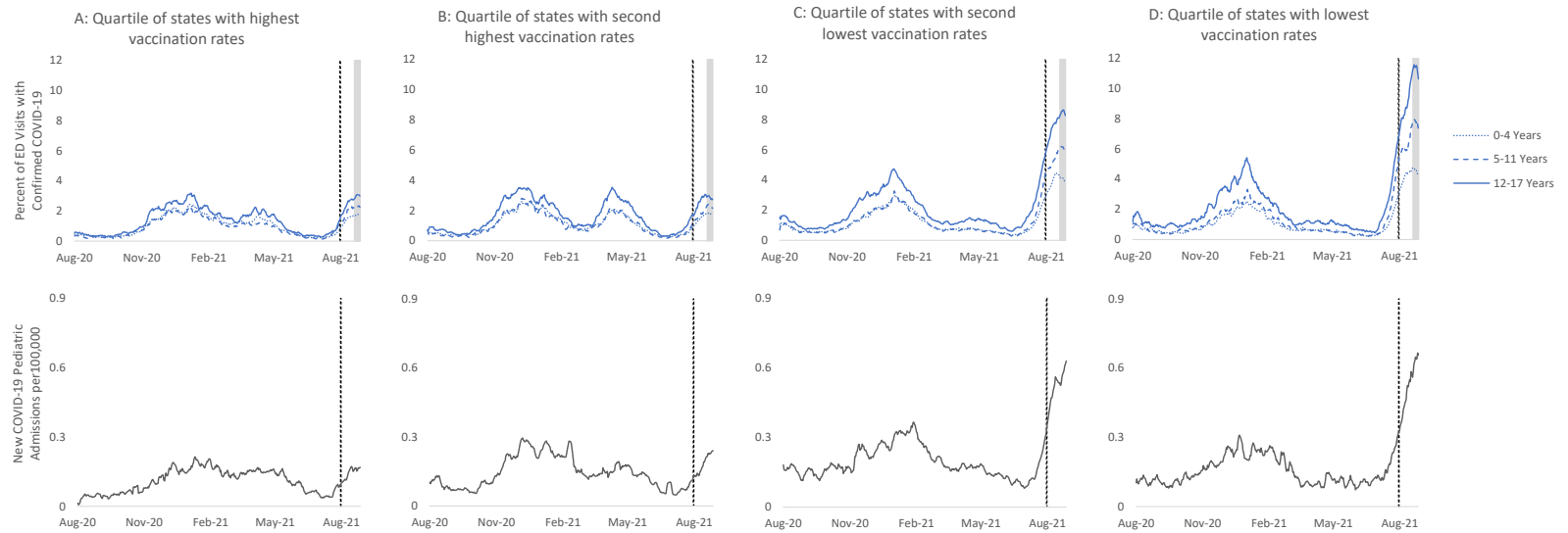


**Supplementary Figure.** Percentage of pediatric COVID-19 related emergency department (ED) visits of all ED visits\* by age group and rate of hospital admissions with COVID-19<sup>†</sup> among persons aged 0–17 years by quartile of state vaccination coverage<sup>‡</sup> (highest,<sup>\*</sup> second highest,<sup>\*\*</sup> second lowest,<sup>††</sup> and lowest<sup>§§</sup>)— United States, August 1, 2020–August 27 2021



Sources: COVID-19 Vaccination Trends in the United States, <https://data.cdc.gov/Vaccinations/COVID-19-Vaccination-Trends-in-the-United-States-N/rh2h-3yt2> National Syndromic Surveillance Program, U.S. Department of Health and Human Services Unified Hospital dataset, accessed August 30, 2021.

\* Emergency department (ED) visit data are from the National Syndromic Surveillance Program (NSSP) and averaged over a 7-day period to obtain a 7-day moving daily average. Data are limited to emergency departments that consistently reported high-quality data across the time period. Data from Ohio, South Dakota, Wyoming, and Hawaii are not included. Fewer than 50% of facilities in California, Iowa, and Minnesota report to NSSP.

<sup>†</sup> Daily hospital admissions averaged over a 7-day period to obtain a 7-day moving daily average per 100,000 persons age 0–17 years.

<sup>‡</sup> Vaccine coverage data are for the population aged  $\geq 12$  years who completed COVID-19 vaccination series as of July 31, 2021 (as noted by vertical dashed line on graphs). Idaho provides vaccine data only for vaccine recipients who are 18 years and older.

<sup>\*</sup> Highest vaccination states: Connecticut, Massachusetts, Maryland, Maine, New Hampshire, New Jersey, New Mexico, New York, Oregon, Rhode Island, Virginia, Vermont, Washington ( $> 63.45\%$ )

<sup>\*\*</sup> Second highest vaccination states: California, Colorado, District of Columbia, Delaware, Hawaii, Iowa, Illinois, Michigan, Minnesota, Nebraska, Pennsylvania, Wisconsin ( $> 56.30\% \ \& \ \leq 63.45\%$ )

<sup>††</sup> Second lowest vaccination states: Alaska, Arizona, Florida, Indiana, Kansas, Kentucky, Montana, North Carolina, Nevada, Ohio, South Dakota, Texas, Utah ( $> 49.75\% \ \& \ \leq 56.30\%$ )

<sup>§§</sup> Lowest vaccination states: Alabama, Arkansas, Georgia, Idaho, Louisiana, Missouri, Mississippi, North Dakota, Oklahoma, South Carolina, Tennessee, West Virginia, Wyoming ( $\leq 49.75\%$ )

Gray bar: COVID-19 ED data are not yet complete. Trends may change as diagnosis data are added to records.