



COVID-19

IF YOU ARE FULLY VACCINATED

Find [new guidance for fully vaccinated people](#). If you are not vaccinated, [find a vaccine](#).



Cruise Ship Color Status

Updated July 9, 2021

[Print](#)

CDC is committed to helping cruise lines provide for the safety and well-being of their crew members while onboard cruise ships. CDC fully supports the efforts of cruise ship operators to vaccinate their crew. CDC implemented the COVID-19 color-coding system for cruise ships to mitigate transmission of COVID-19 onboard. Onboard [preventive measures](#) are recommended or required based on ship color status. A cruise ship's color status is determined based on the criteria below.

All cruise ships operating in U.S. waters, or seeking to operate in U.S. waters, must comply with all of the requirements under the CDC [Framework for Conditional Sailing Order](#) (CSO) and [Technical Instructions](#) even when outside U.S. waters.

The CSO was written as a [phased approach](#)  to take into account the evolving state of the COVID-19 pandemic in the United States and worldwide. For an infographic on the phased approach, visit <https://www.cdc.gov/coronavirus/2019-ncov/travelers/pdf/CSO-Phased-Approach-Infographic-p.pdf> .

Eligibility for Ship Color Status

Ships are eligible for color status based on the following:

- **Established a COVID-19 complete and accurate COVID-19 response plan.**
 - This does not mean ships are allowed to resume passenger operations, but rather that they have met CDC's requirements to provide adequate health and safety protections for crew members.
 - Cruise company officials must sign an acknowledgment of the completeness and accuracy of their response plan.
- **Submission of the daily Enhanced Data Collection (EDC) form. Ships currently outside of U.S. waters and not operating under the CSO should submit the EDC form for the 28 days preceding the cruise ship's expected arrival in U.S. waters.**

Criteria for Ship Color Status

Ship color status is contingent on daily submission of the EDC form and is determined based on whether:

- There are confirmed cases of COVID-19 [\[1\]](#) or COVID-19-like illness [\[2\]](#) for 14 days, as determined by a qualified medical professional.
- The ship has received ship-to-ship transfers from a ship that meets the "Red" [criteria](#) within the 14 days before the transfer occurred.
- Land-based crew were not immediately quarantined upon embarking the ship.

1. Confirmed COVID-19 means laboratory confirmation for SARS-CoV-2, the virus that causes COVID-19, by viral test.
2. COVID-19-like illness includes acute respiratory illness (ARI), influenza-like illness (ILI), or diagnosis of pneumonia, and additional COVID-19-like illness (aCLI) clinical criteria.

Status of COVID-19 Response Plans and Cruise Ship Color Status

As a condition of receiving permission to operate in U.S. waters, cruise ship operators must have a complete and accurate response plan that provides adequate health and safety protections for crew members to work and disembark during the initial phases of the CSO. CDC has provided feedback regarding all the response plans that have been submitted and is working with cruise ship operators to ensure they are implementing the safeguards outlined in their plans.

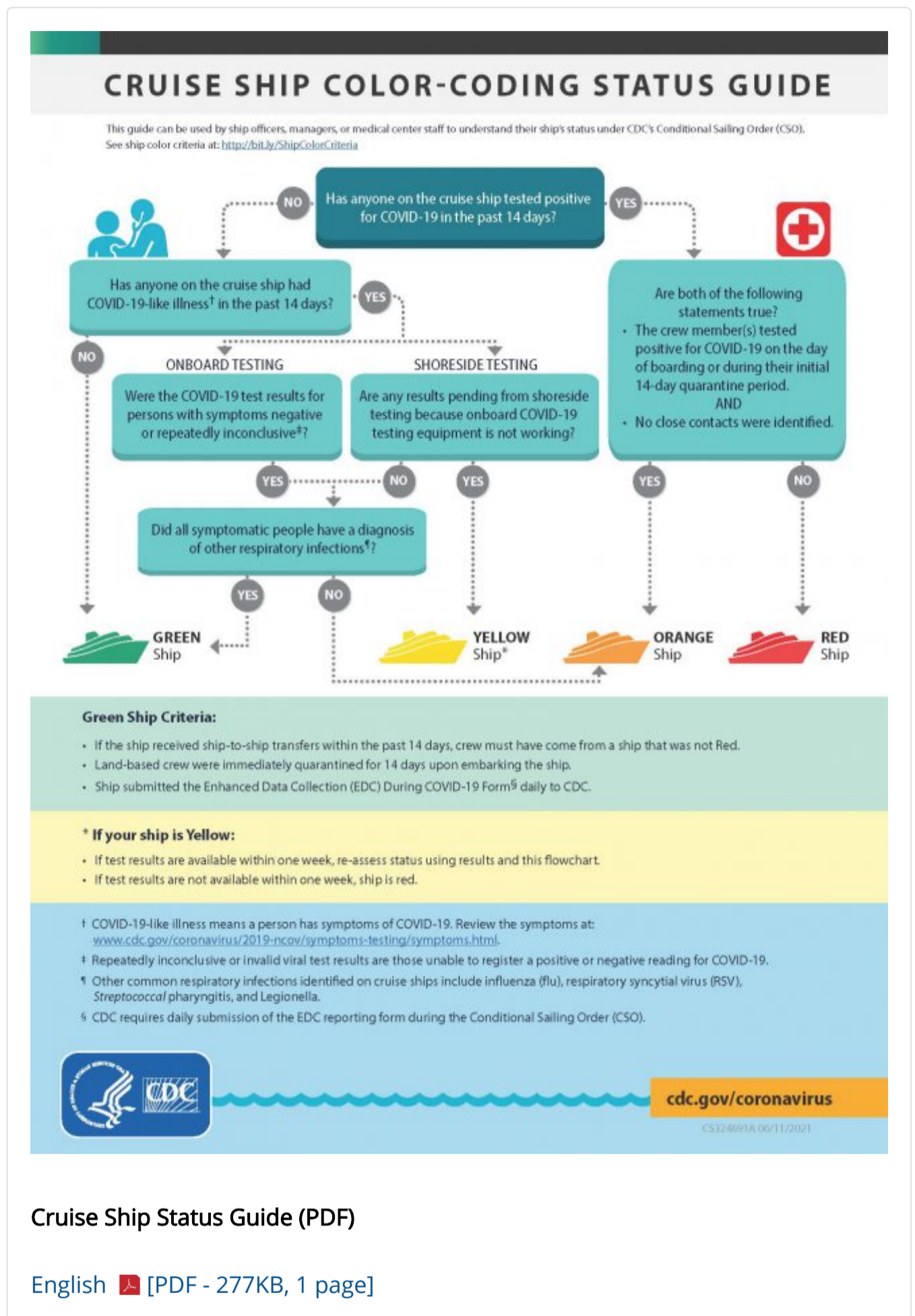
The following table lists cruise ships operating or planning to operate in U.S. waters during the initial phases of the CSO and have met surveillance reporting requirements.

Determination for [color-coding status](#) and ability to operate in U.S. waters (Green, Yellow, Orange, or Red) can only be made for ships if the following are true:

1. CDC has finished the review of the cruise line's plan.
2. Cruise line has returned an acknowledgement attesting that their No Sail Order response plan is complete and accurate.
3. Ship has submitted at least 4 weeks of surveillance data to CDC in accordance with the Technical Instructions.

This table is updated several times a week, as needed. Last updated July 9, 2021 with EDC data submitted July 8, 2021

Parent Company	Cruise Line	No Sail Order Response Plan Status	Ship Name	Ship Status
Bahamas Paradise Cruise Line	Bahamas Paradise Cruise Line	Complete and accurate with signed acknowledgement	Grand Classica	Red
Carnival Corporation	Carnival Cruise Lines, Inc.	Complete and accurate with signed acknowledgement	Carnival Breeze	Orange
			Carnival Conquest	Green



Cruise Ship Status Guide (PDF)

English [PDF - 277KB, 1 page]

Parent Company	Cruise Line	No Sail Order Response Plan Status	Ship Name	Ship Status
			Carnival Ecstasy	Green
			Carnival Elation	Green
			Carnival Freedom	Orange
			Carnival Horizon	Orange
			Carnival Liberty	Orange
			Carnival Mardi Gras	Orange
			Carnival Miracle	Orange
			Carnival Panorama	Orange
			Carnival Pride	Green
			Carnival Sensation	Green
			Carnival Sunrise	Orange
			Carnival Sunshine	Green
			Carnival Vista	Orange
	Holland America Line	Complete and accurate with signed acknowledgement	Koningsdam	Green
			Nieuw Amsterdam	Orange
			Nieuw Statendam	Green
			Noordam	Green
			Westerdam	Orange
	Princess Cruises	Complete and accurate with signed acknowledgement	Caribbean Princess	Green
			Coral Princess	Green

Parent Company	Cruise Line	No Sail Order Response Plan Status	Ship Name	Ship Status
			Emerald Princess	Green
			Grand Princess	Orange
			Majestic Princess	Red
			Royal Princess	Green
			Ruby Princess	Green
Walt Disney Company	Disney Cruise Line	Complete and accurate with signed acknowledgement	Disney Dream	Red
			Disney Fantasy	Green
			Disney Wonder	Orange
MSC Cruise Management (UK) Limited	MSC Cruises	Complete and accurate with signed acknowledgement	MSC Armonia	Orange
			MSC Meraviglia	Orange
Norwegian Cruise Line Holdings	Norwegian Cruise Line	Complete and accurate with signed acknowledgement	Norwegian Encore	Green
			Norwegian Gem	Red
			Norwegian Jewel	Orange
			Norwegian Joy	Red
			Norwegian Sun	Green
			Pride of America	Orange
	Oceania	Complete and accurate with signed acknowledgement	Insignia	Green
	Regatta		Orange	
	Royal Caribbean Group	Celebrity Cruises	Complete and accurate with signed acknowledgement	Celebrity Edge
Celebrity Equinox				Orange
Celebrity Reflection				Green
Royal Caribbean International		Complete and accurate with signed acknowledgement	Allure of the Seas	Red

Parent Company	Cruise Line	No Sail Order Response Plan Status	Ship Name	Ship Status
			Brilliance of the Seas	Green
			Enchantment of the Seas	Orange
			Explorer of the Seas	Assisting with Disaster Response
			Freedom of the Seas	Red
			Independence of the Seas	Orange
			Mariner of the Seas	Red
			Oasis of the Seas	Orange
			Odyssey of the Seas	Red
			Ovation of the Seas	Orange
			Rhapsody of the Seas	Green
			Serenade of the Seas	Orange
			Symphony of the Seas	Orange
			Vision of the Seas	Red
	Silversea Cruises LTD	Complete and accurate with signed acknowledgement	Silver Muse	Orange

Frequently Asked Questions

Does CDC allow commercial travel of crew members?

Yes, now that cruise ships have established [routine testing](#) protocols based on color status for crew and are working towards vaccinating crew members, CDC is allowing commercial travel of crew regardless of the ship's color code status.

Do cruise ships have any restrictions for who can travel commercially?

Yes, cruise ships have restrictions for who can travel commercially. The following stipulations apply for commercial travel:

- Crew members who test positive for COVID-19 *cannot* travel commercially until they have fully recovered from COVID-19 based on [CDC criteria](#) for discontinuing isolation.
 - Use of commercial transportation by crew members who have recovered from COVID-19 and met criteria for release from isolation according to [CDC guidance](#).
- Crew members with [signs and symptoms](#) of COVID-19 *cannot* travel commercially until COVID-19 has been ruled out.
- Crew members who are identified as [close contacts](#):
 - If [fully vaccinated](#) or recovered from COVID-19 in the past 90 days, commercial travel is permitted and there is no requirement for quarantine or testing.
 - If not fully vaccinated and did not recover from COVID-19 in the past 90 days, commercial travel is not permitted until quarantine and testing requirements are completed.

Why is CDC requiring ships to routinely test all crew members during the phases of the CSO, including those on “Green” ships?

The purpose of testing during the phases of the CSO is to ensure cruise ship operators have adequate health and safety protections for crew members while they build the onboard laboratory capacity needed to test crew and future passengers. There also continue to be potential exposures on board — including on “Green” ships — such as from newly embarking crew members, crew transfers, and contractors.

What does it mean if a cruise line or cruise ship is not listed on the table above?

If a cruise line or cruise ship is not listed, it means one of the following:

- CDC has not been notified that the ship is intending to operate in U.S. waters during the period of the CSO, or
- CDC has not completed the review of the cruise line’s plan, or
- Cruise line has not returned an acknowledgement attesting that their No Sail Order response plan is complete and accurate, or
- Ship has not submitted at least 4 weeks of surveillance data to CDC in accordance with the Technical Instructions.

Last Updated July 9, 2021