

# GIS EXPRESS

## For Chronic Disease



A newsletter brought to you by  
CDC's Division for Heart Disease and Stroke Prevention

Volume 1, Issue 1

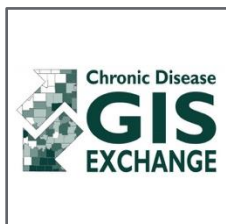
May 15, 2018

Greetings!

We are excited to present the inaugural issue of the GIS Express for Chronic Disease. This newsletter is designed to keep you up-to-date about GIS-related information that is readily available from CDC's Division for Heart Disease and Stroke Prevention and other chronic disease –related Divisions at CDC, share examples of GIS being used to address chronic disease, and inform you about upcoming public health GIS-related events and conferences.

We welcome your impressions and requests. You can reach us at [GISXmoderator@cdc.gov](mailto:GISXmoderator@cdc.gov)

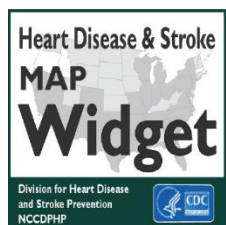
The Small Area Analysis Team, Division for Heart Disease and Stroke Prevention, National Center for Chronic Disease Prevention and Health Promotion, CDC



### GIS Training Tutorials – New and Updated Modules

The GIS Training Tutorials, located on the GIS Exchange, now include new modules from Children's Environmental Health Initiative at Rice University that address ArcGIS Online, Mapping Uncertainty, and Generating Composite Measures. In addition, all modules for the novice and intermediate lessons have been updated to reflect the current ArcMap interface and restructured to improve the user experience.

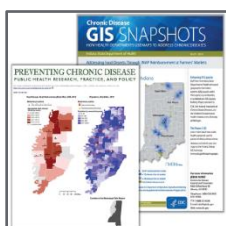
[View the New Training Modules](#)



### New! Customize the Map Widget to Meet Your Needs

The Heart Disease and Stroke Map Widget now offers the ability to set the default health outcome to either stroke or heart disease, allowing you to customize the widget to your audience. With the Map Widget you can display interactive county-level maps on your website and the data are automatically updated by CDC.

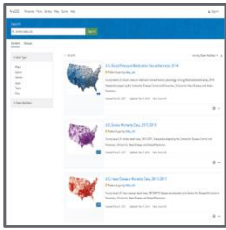
[Download the Map Widget](#)



### Call for Papers using GIS and Spatial Analysis

CDC's online journal "Preventing Chronic Disease" is soliciting submissions for a special collection featuring how GIS and spatial analyses are used in chronic disease research and public health practice. The deadline is August 31, 2018.

[View Submission Guidelines](#)



## CDC's Data are Now Available on ArcGIS Online!

Heart disease, stroke, and blood pressure medication adherence data are now available on ArcGIS Online. You can easily download county level data for use in ArcGIS desktop, or create a map using the free ArcGIS Online mapping platform. You can easily find our data using the search query 'owner:data\_cdc'.

[View Data on ArcGIS Online](#)



## Upcoming Conferences and Events

- [Council of State and Territorial Epidemiologists \(CSTE\) June 10-14](#)
- [ESRI User Conference July 9-13](#)
- [PCD Call for Papers \(GIS and Spatial Analysis Collection\) Ends Aug.31](#)
- [URISA GIS Pro Conference \(GIS in HHS focus\) Oct 9-12](#)
- [ESRI Health and Human Services Conference Oct 23-25](#)
- [Northwest GIS User Group Conference Oct 29-Nov 2](#)
- [American Public Health Association Annual Meeting Nov 10-14](#)

---

Have you had a paper accepted for publication, know of an upcoming and relevant webinar, or made a presentation where GIS was an integral part of the content? We invite you to share your news and content ideas by emailing [GISXmoderator@CDC.gov](mailto:GISXmoderator@CDC.gov)

This email was sent on behalf of Centers for Disease Control and Prevention • 1600 Clifton Rd • Atlanta, GA 30333  
1-800-CDC-INFO (800-232-4636). For questions or comments, or to be added to this communication, contact [GISXmoderator@CDC.gov](mailto:GISXmoderator@CDC.gov). If you do not wish to receive this newsletter, please send an email to [GISXmoderator@CDC.gov](mailto:GISXmoderator@CDC.gov) with 'unsubscribe' as the subject line.

National Center for Chronic Disease Prevention and Health Promotion  
Division for Heart Disease and Stroke Prevention

