



COVID-19

— COVID DATA TRACKER WEEKLY REVIEW

Updated May 21, 2021 [Print](#)

[Subscribe to the Weekly Review](#)

Interpretive Summary for **May 21, 2021**

Summer, Sun, and Safe Fun

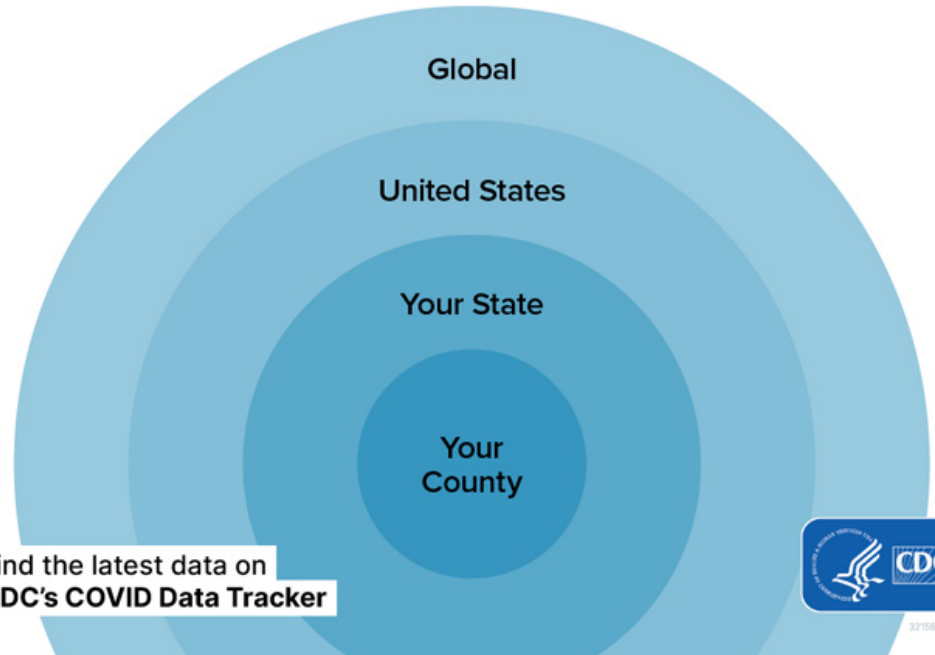
COVID-19 **cases**, **hospitalizations**, and **deaths** are going down, and the number of people **vaccinated** continues to go up, providing a sense of optimism as summer approaches. As of May 20, 48.4% of the U.S. population ages 18 years and older is fully vaccinated, and 60.5% have received at least one dose of a COVID-19 vaccine. Additionally, as of last week, millions more are now **eligible** to receive a COVID-19 vaccine. These trends and new CDC evidence-based **guidance** on masking provide encouragement that we are making progress toward returning to a sense of normalcy.

As you look ahead to summer, consider how COVID-19 is spreading in your **community** when **choosing activities**. Outdoor activities and visits are safer than those indoors, but **fully vaccinated** people can participate in most indoor activities without much risk. If you are not yet vaccinated, you should continue to practice **prevention strategies** such as wearing a well-fitted mask, practicing physical distancing, avoiding crowds, and washing your hands.

For more than a year, many people have focused on staying safe from COVID-19. While this continues to be important, returning to regular activities when you are fully vaccinated, such as travel, events, and other social gatherings, can provide hope for the days ahead. In addition, taking **simple actions** such as deep breathing, physical activity, healthy eating, practicing good sleep habits, and safely connecting with family, friends, and neighbors can improve your well-being.



Stay on top of data from your community and from around the world using the CDC COVID Data Tracker



Find the latest data on CDC's COVID Data Tracker



 [View Larger](#)

Reported Cases

The current 7-day moving average of daily new cases (27,789) decreased 19.5% compared with the previous 7-day moving average (34,502). Compared with the highest peak on January 8, 2021 (252,768), the current 7-day average decreased 89.0%. A total of 32,855,010 COVID-19 cases have been reported as of May 19.

32,855,010
Total Cases
Reported

27,789
Current 7-Day
Average*

34,502
Prior 7-Day Average

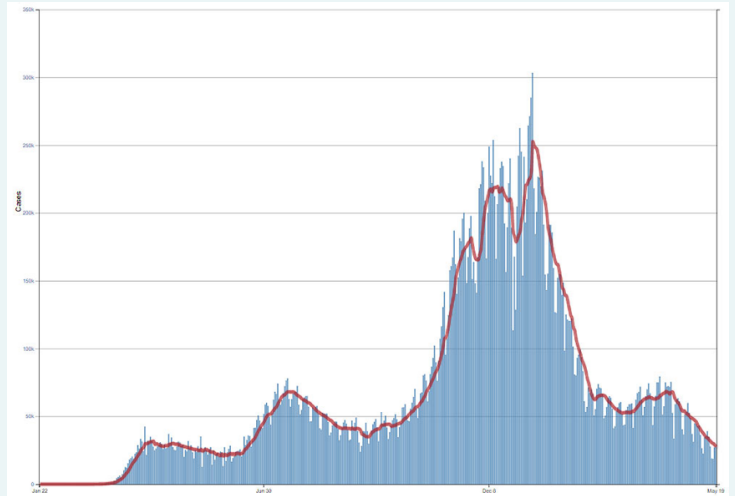
-19.5%
Change in 7-Day
Average since Prior
Week

*Historical cases are excluded from daily new cases and 7-day average calculations until they are incorporated into the dataset for the applicable date. Of 85,596 historical cases reported retroactively, 246 were reported on the most recent submission date; 1,918 in the current week; and 1,461 were reported in the prior week.

Note: In the above table, historical data with missing report dates are excluded from current and prior 7-day averages, and the percent change in the 7-day average.

Daily Trends in COVID-19 Cases in the United States Reported to CDC

7-Day moving average



[View Larger](#)

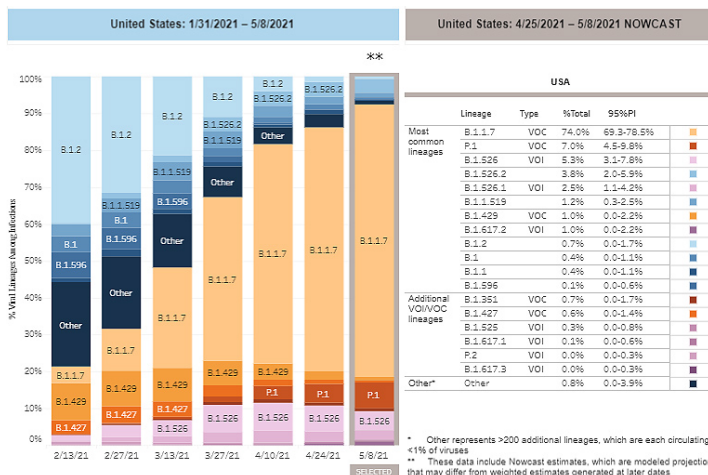
[More Case Data](#)

SARS-CoV-2 Variants

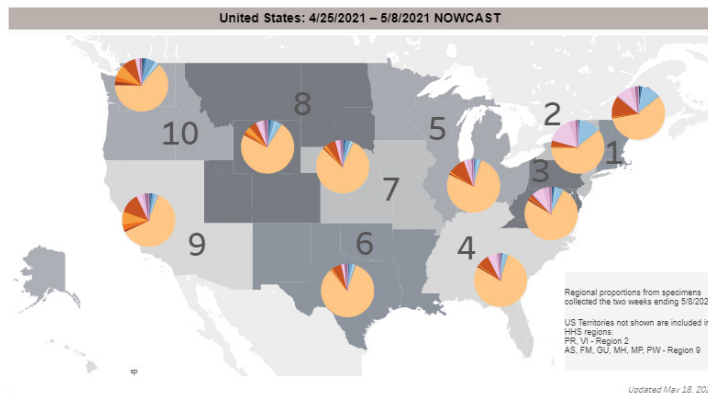
Multiple **variants** of the virus that causes COVID-19 are circulating globally and within the United States. To date, five variants have been classified as a **variant of concern (VOC)**. **Nowcast estimates*** of SARS-CoV-2 cases caused by these VOCs for the two weeks ending May 8 are summarized here. Nationally, B.1.1.7 proportions are predicted to increase to 74%; P.1 proportions are predicted to increase to 7%; B.1.427/B.1.429 proportions are predicted to increase; and B.1.351 proportions are predicted to decrease. Nowcast estimates predict that B.1.1.7 proportions will increase to more than 60% in all but HHS region 1. B.1.351 is predicted to increase in regions 3, 4, 9, and 10; P.1 is predicted to increase in all regions; and B.1.427/429 will be highest in regions 9 and 10. B.1.617.2, a new variant of interest, is predicted to be highest in regions 1, 6, 8, and 9.

*Current **nowcast estimates** are modeled data based on sequencing data from previous weeks. Nowcast provides timely estimates for the present, while accounting for limited sequence data availability, as specimens from the most current time interval are still being processed.

SARS-CoV-2 Variants Circulating in the United States



[View Larger](#)



[View Larger](#)

[More Variants Data](#)

Testing

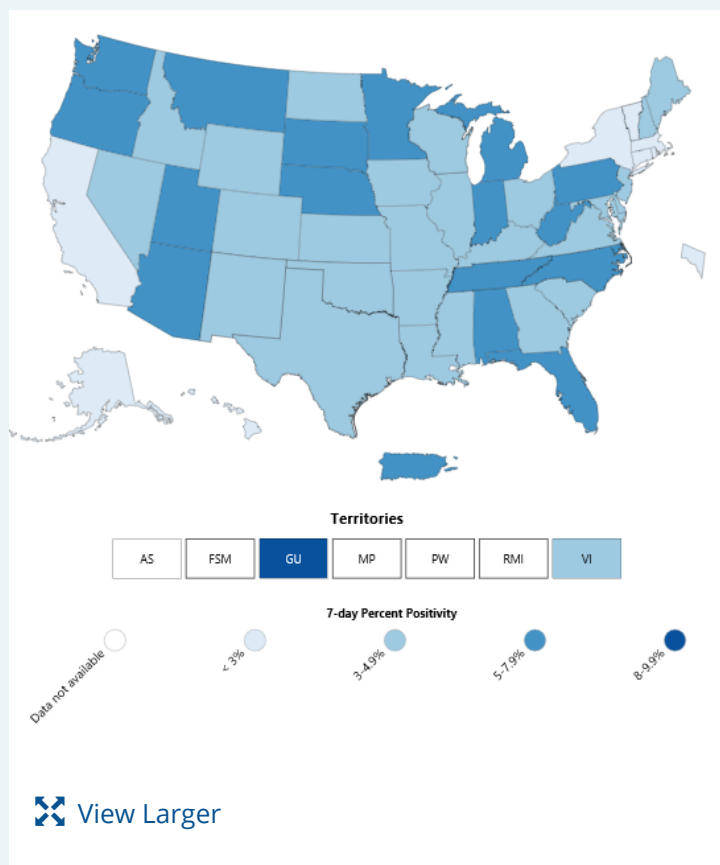
The percentage of COVID-19 NAATs ([nucleic acid amplification tests](#)) that are positive ([percent positivity](#)) has decreased from the previous week. The 7-day average of percent positivity from tests is now 3.0%. The 7-day average number of tests reported for May 7-May 13 was 1,007,699, down 9.4% from 1,112,391 for the prior 7 days.

437,214,993
Total Tests
Reported

1,007,699	3.0%
7-Day Average Tests Reported	7-Day Average % Positivity

3.4%	-12.6%
Previous 7-Day Average % Positivity	Change in 7-Day Average % Positivity since Prior Week

COVID-19 NAAT Laboratory Test 7-day Percent Positivity by State/Territory



[More Testing Data](#)

Vaccinations

The U.S. COVID-19 Vaccination Program began December 14, 2020. As of May 20, 279.4 million vaccine doses have been administered. Overall, about 160.2 million people, or 48.2% of the total U.S. population, have received at least one dose of vaccine. About 126.6 million people, or 38.1% of the total U.S. population, have been fully vaccinated.* As of May 20, the 7-day average number of administered vaccine doses reported to CDC per day was 1.8 million, a 12.5% decrease from the previous week.

Daily Change in Number of COVID-19 Vaccinations in the United States Reported to CDC

— 7-Day moving average

The COVID Data Tracker [Vaccination Demographic Trends](#) tab shows vaccination trends by age group. As of May 19, 84.9% of people ages 65 or older have received at least one dose of vaccine and 73.2% are fully vaccinated. Over half (60.5%) of people ages 18 or older have received at least one dose of vaccine and 48.4% are fully vaccinated.

279,397,250
Vaccines
Administered

160,177,820
People who
received at least
one dose

126,605,166
People who are
fully vaccinated*

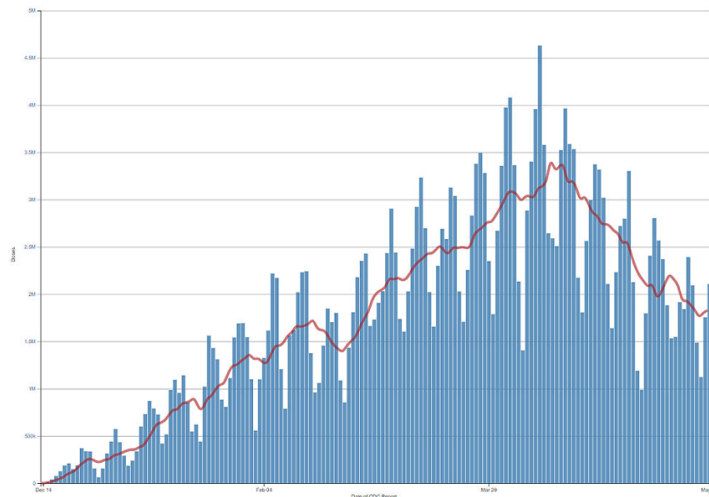
48.2%
Percentage of the
US population that
has received at
least one dose

38.1%
Percentage of the
US population that
has been fully
vaccinated*

+1.6
Percentage point
increase from last
week

+2.3
Percentage point
increase from last
week

*People who are fully vaccinated represents the number of people who have received the second dose in a two-dose COVID-19 vaccine series or one dose of the single-shot J&J/Janssen COVID-19 vaccine.



[View Larger](#)

[More Vaccination Data](#)

Hospitalizations

New Hospital Admissions

The current 7-day average for May 12–May 18 was 3,438. This is a 15.1% decrease from the prior 7-day average (4,051) from May 5–May 11. The 7-day moving average for new admissions has been consistently decreasing since April 19.

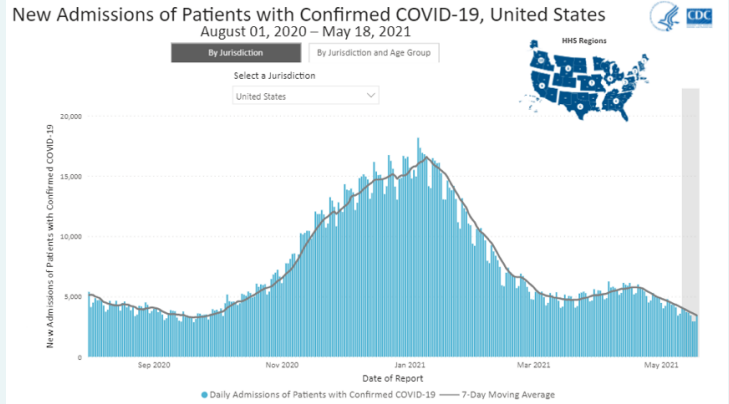
Daily Trends in Number of New COVID-19 Hospital Admissions in the United States

2,202,437
Total New Admissions

3,438
Current 7-Day
Average

4,051
Prior 7-Day Average

-15.1%
Change in 7-Day
Average



[View Larger](#)

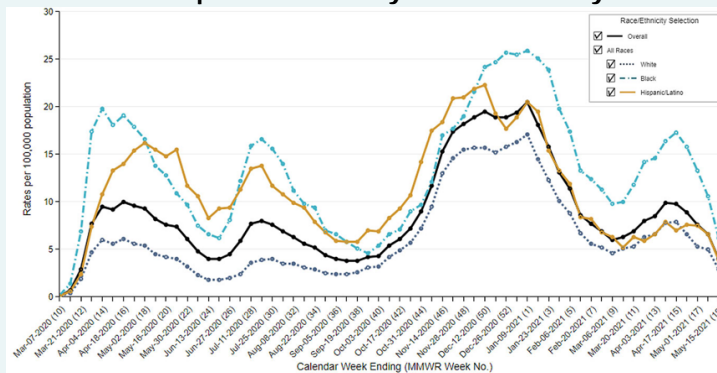
New admissions are pulled from a 10 am EST snapshot of the HHS Unified Hospital Timeseries Dataset. Due to potential reporting delays, data from the most recent 7 days, as noted in the figure above with the grey bar, should be interpreted with caution. Small shifts in historic data may also occur due to changes in the CMS Provider of Services file, which is used to identify the cohort of included hospitals.

[More Hospital Data](#)

COVID-NET: Recent Trends in Hospitalizations in Non-Hispanic Black Persons

Since the start of the pandemic, people from racial and ethnic minority groups have been at increased risk for COVID-19-associated hospitalizations compared to non-Hispanic White persons. While rates of hospitalizations have fallen in all race and ethnicity groups since January 2021, the hospitalization rate for non-Hispanic Black persons remains higher than other groups and has been nearly twice as high as rates in non-Hispanic White persons since late January. After falling in January and February 2021, hospitalization rates increased again in all groups beginning in early March. The weekly rate of hospitalizations for non-Hispanic Black persons reached 17.3 per 100,000 population for the week ending April 17, double the rate for non-Hispanic White persons (7.9 per 100,000 population for the same week). While preliminary data for late April and early May show rates again decreasing for all groups, the hospitalization rate in non-Hispanic Black persons remains one of the highest.

Trends in Hospitalizations by Race/Ethnicity*



[View Larger](#)

*Only White, Black, and Hispanic/Latino groups were included in this figure. Additional race/ethnicity groups can be viewed by selecting Weekly Rates by Race/Ethnicity at the More COVID-NET Data link.

The Coronavirus Disease 2019 (COVID-19)-Associated Hospitalization Surveillance Network (COVID-NET) is an additional source for hospitalization data collected through a network of more than 250 acute-care hospitals in 14 states (representing ~10% of the U.S. population). Detailed data on patient demographics, including race/ethnicity, underlying medical conditions, medical interventions, and clinical outcomes, are collected using a standardized case reporting form.

[More COVID-NET Data](#)

Deaths

The current 7-day moving average of new deaths (498) decreased 10.5% compared with the previous 7-day moving average (556). As of May 19, a total of 584,975 COVID-19 deaths have been reported.

584,975
Total Deaths Reported

498
Current 7-Day Average*

556
Prior 7-Day Average

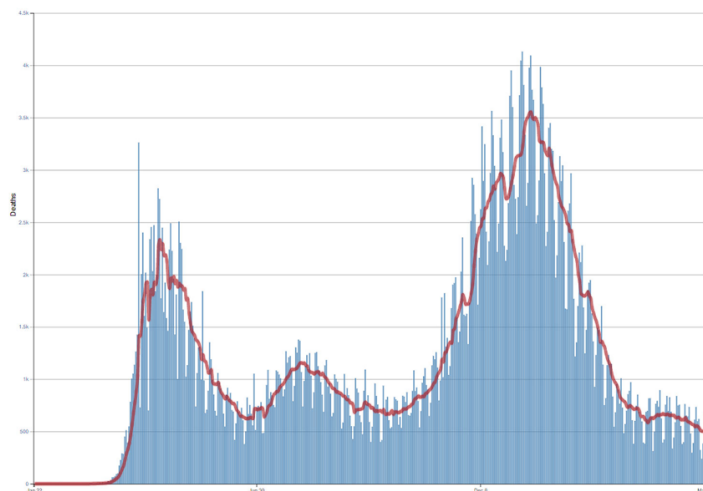
-10.5%
Change in 7-Day Average Since Prior Week

*Historical deaths are excluded from the daily new deaths and 7-day average calculations until they are incorporated into the dataset by their applicable date. Of 11,165 historical deaths reported retroactively, 182 were reported for the most recent submission date; 223 in the current week; and 6 were reported in the prior week.

Note: In the above table, historical data with missing report dates are excluded from current and prior 7-day averages, and the percent change in the 7-day average.

Daily Trends in Number of COVID-19 Deaths in the United States Reported to CDC

— 7-Day moving average



[View Larger](#)

[More Death Data](#)

Recent CDC COVID-19 Publications

1. [Characteristics of COVID-19 Cases and Outbreaks at Child Care Facilities — District of Columbia, July–December 2020](#)
2. [Disparities in COVID-19 Vaccination Coverage Between Urban and Rural Counties — United States, December 14, 2020–April 10, 2021](#)
3. [The Advisory Committee on Immunization Practices’ Interim Recommendation for Use of Pfizer-BioNTech COVID-19 Vaccine in Adolescents Aged 12–15 Years — United States, May 2021](#)
4. [Interim Estimates of Vaccine Effectiveness of Pfizer-BioNTech and Moderna COVID-19 Vaccines Among Health Care Personnel — 33 U.S. Sites, January–March 2021](#)

Recent COVID Data Tracker Updates

- Updated [Vaccination Demographics](#) and [Vaccination Demographic Trends](#) tabs display new age groupings among younger ages
- The new [COVID-19 Hospitalizations and Disease Severity](#) tab shows trends in hospitalizations and disease severity among patients hospitalized with COVID-19 in a large subset of hospitals across the U.S.
- The [Cases, Deaths, and Testing](#) tab now displays percent positivity with more granularity