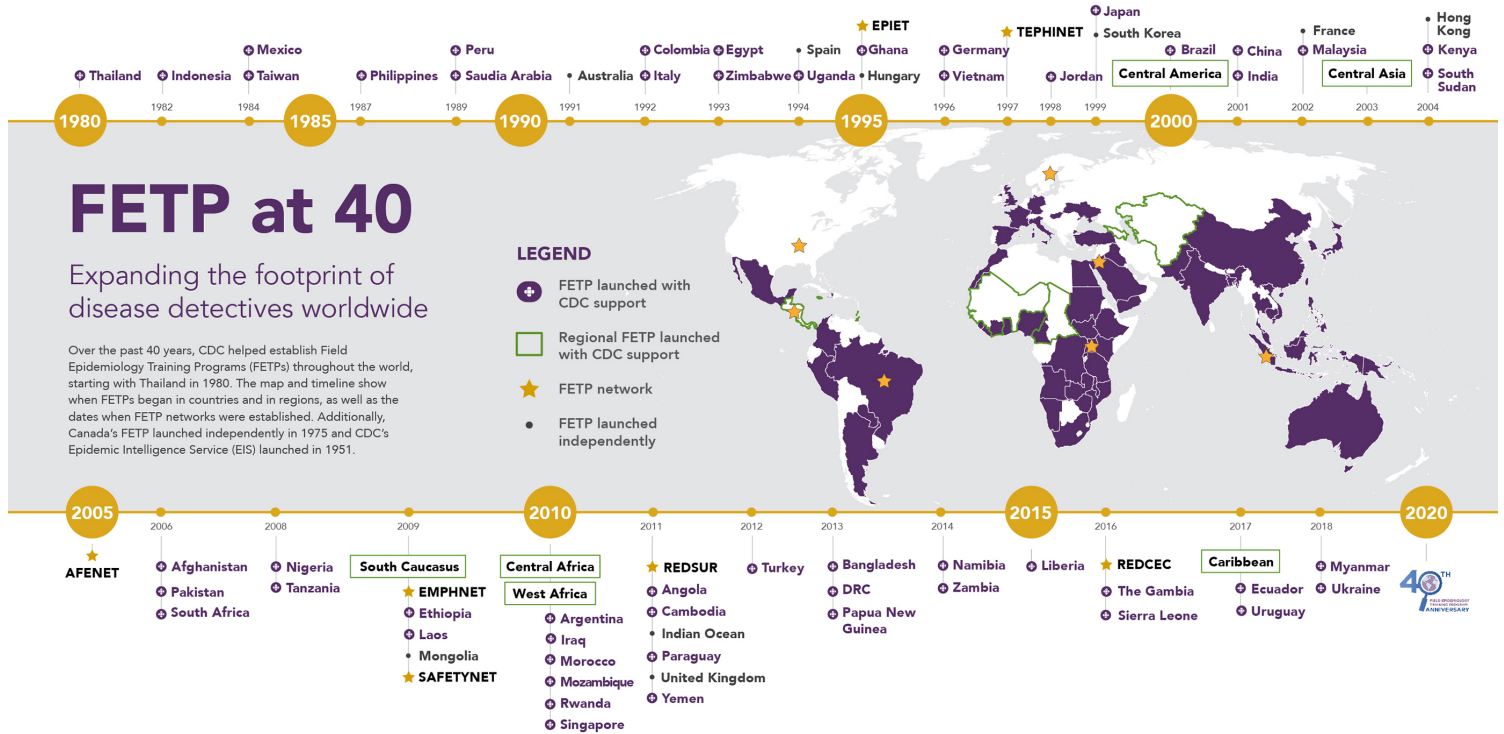




FETP at 40 Timeline



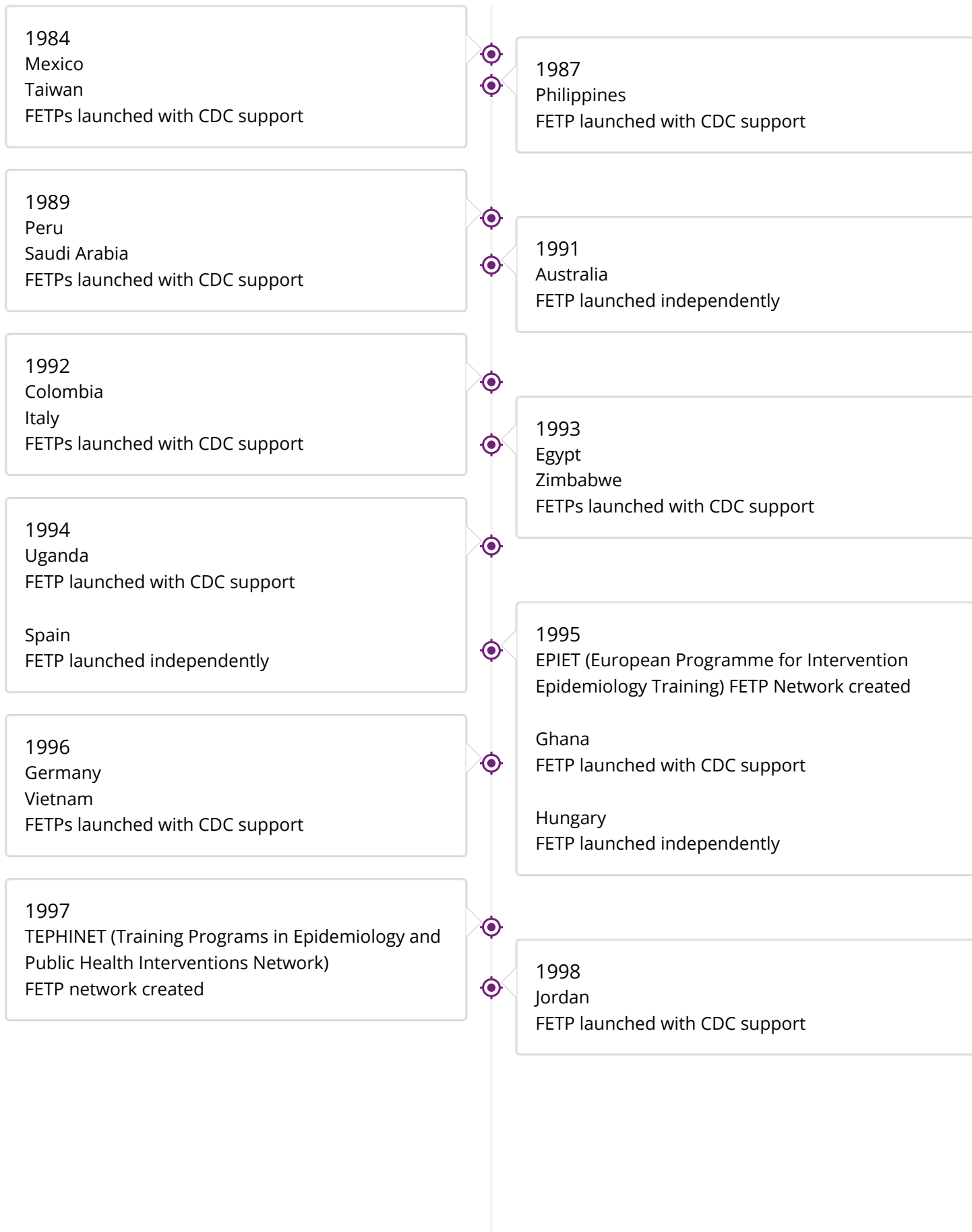
[View Larger](#)

Expanding the footprint of disease detectives worldwide

Over the past 40 years, CDC helped establish Field Epidemiology Training Programs (FETPs) throughout the world, starting with Thailand in 1980. The map and timeline show when FETPs began in countries and in regions, as well as the dates when FETP networks were established. Additionally, Canada's FETP launched independently in 1975 and CDC's Epidemic Intelligence Service (EIS) launched in 1951.

1980
Thailand
FETP launched with CDC support

1982
Indonesia
FETP launched with CDC support





2009
 South Caucasus Regional FETP launched with CDC support

EMPHNET (Eastern Mediterranean Public Health Network)
 SAFETYNET (South Asia Field Epidemiology and Technology Network)
 FETP networks created

Ethiopia
 Laos
 FETPs launched with CDC support

Mongolia
 FETP launched independently

2010
 Central Africa and West Africa Regional FETPs launched with CDC support

Argentina
 Iraq
 Morocco
 Mozambique
 Rwanda
 Singapore
 FETPs launched with CDC support

2011
 REDSUR (Red Suramericana de Epidemiología de Campo)
 FETP network created

Angola
 Cambodia
 Paraguay
 Yemen
 FETPs launched with CDC support

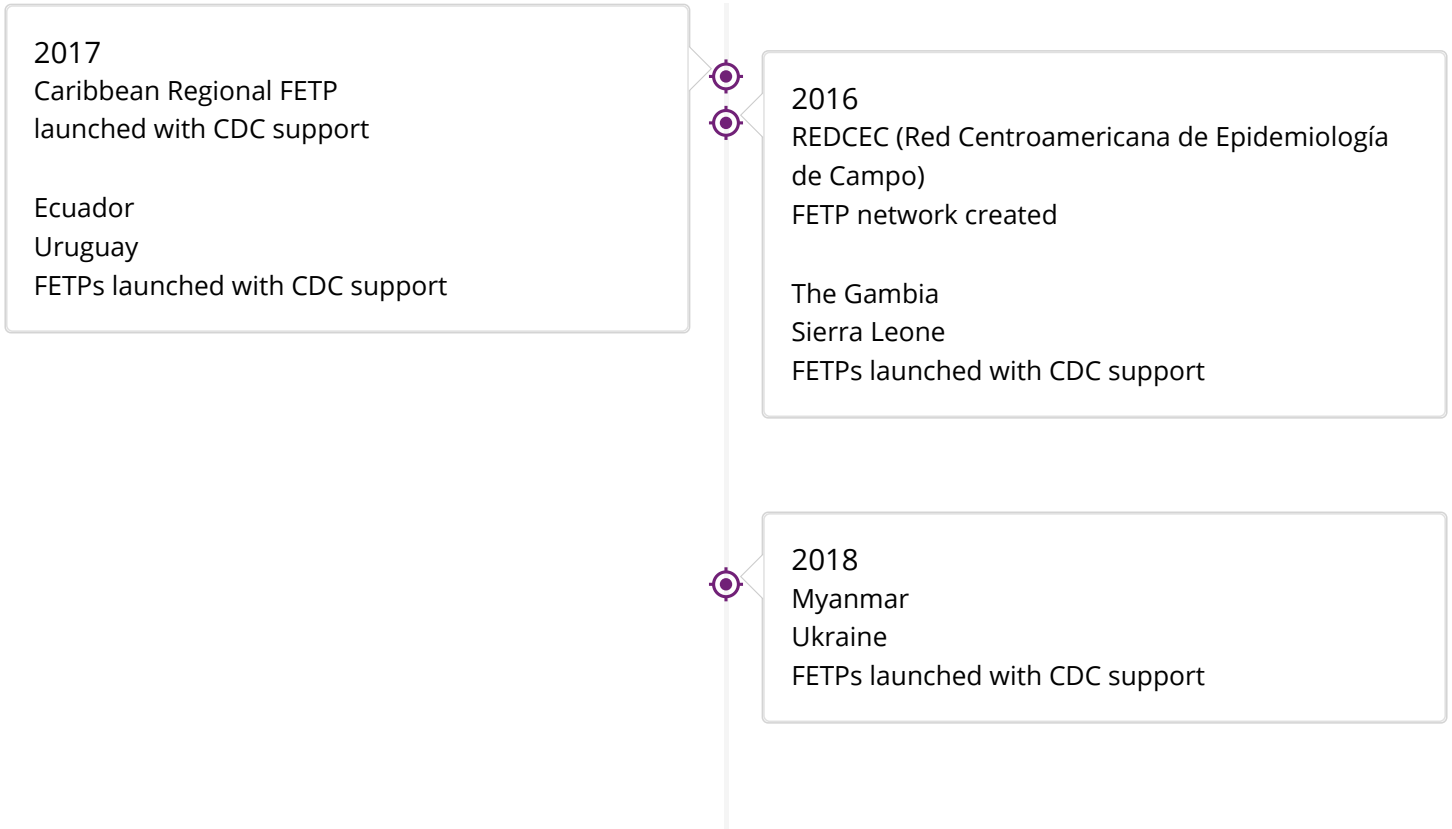
Indian Ocean
 United Kingdom
 FETPs launched independently

2012
 Turkey
 FETP launched with CDC support

2013
 Bangladesh
 Democratic Republic of the Congo (DRC)
 Papua New Guinea
 FETPs launched with CDC support

2014
 Namibia
 Zambia
 FETPs launched with CDC support

2015
 Liberia
 FETP launched with CDC support



Page last reviewed: March 12, 2021

Content source: [Division of Global Health Protection, Global Health, Centers for Disease Control and Prevention](#)