



Weekly U.S. Influenza Surveillance Report

FLUVIEW



A Weekly Influenza Surveillance Report Prepared by the Influenza Division

Note: CDC is tracking the COVID-19 pandemic in a weekly publication called [COVID Data Tracker Weekly Review](https://www.cdc.gov/coronavirus/2019-ncov/covid-data/covidview/).
(<https://www.cdc.gov/coronavirus/2019-ncov/covid-data/covidview/>)

Key Updates for Week 17, ending May 1, 2021

Seasonal influenza activity in the United States remains lower than usual for this time of year.

Viruses

Clinical Labs

The percentage of respiratory specimens testing positive for influenza at clinical laboratories is 0.1% this week.

[\(/flu/weekly/#ClinicalLaboratories\)](#)

Public Health Labs

The number of influenza positives specimens reported by public health labs remains unusually low.

[\(/flu/weekly/#PublicHealthLaboratories\)](#)

Virus Characterization

Influenza virus characterization information will be reported later this season.

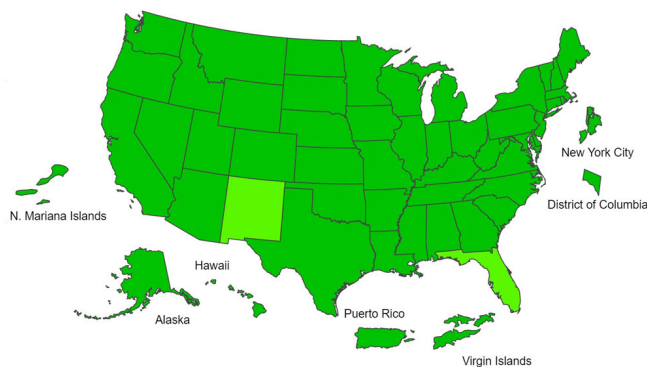
[\(/flu/weekly/#ivc\)](#)

Illness

Outpatient Illness: ILINet

For the fourth week in a row, 1.1% of patient visits to a health care provider were for influenza-like illness (ILI). Nationally, ILI remains below the national baseline of 2.6%. ILI surveillance may be impacted by the COVID-19 pandemic and should be interpreted with caution.

Outpatient Illness: ILINet Activity Map



During week 17, all jurisdictions experienced minimal ILI activity. ILI activity levels may be impacted by the COVID-19 pandemic and should be interpreted with caution.

Severe Disease

Hospitalizations

FluSurv-NET sites reported a current cumulative hospitalization rate of 0.8 per 100,000 population, which is about one-tenth the rate reported at this time during the low-severity 2011-12 season.

NCHS Mortality

11.7% of deaths were attributed to pneumonia, influenza, or COVID-19 (PIC). This is above the epidemic threshold of 6.6%. Currently, the majority of PIC deaths are due to COVID-19.

Pediatric Deaths

No influenza-associated pediatric deaths were reported to CDC this week. The total for the season is one.

All data are preliminary and may change as more reports are received.

A description of the CDC influenza surveillance system, including methodology and detailed descriptions of each data component is available on the [surveillance methods](http://www.cdc.gov/flu/weekly/overview.htm) (<http://www.cdc.gov/flu/weekly/overview.htm>) page.

Additional information on the current and previous influenza seasons for each surveillance component are available on [FluView Interactive](https://www.cdc.gov/flu/weekly/fluviewinteractive.htm) (<https://www.cdc.gov/flu/weekly/fluviewinteractive.htm>).

Key Points

- Flu activity is unusually low at this time.
- An annual flu vaccine is the best way to protect against flu and its potentially serious complications.
- There are also flu antiviral drugs that can be used to treat flu illness.

U.S. Virologic Surveillance:

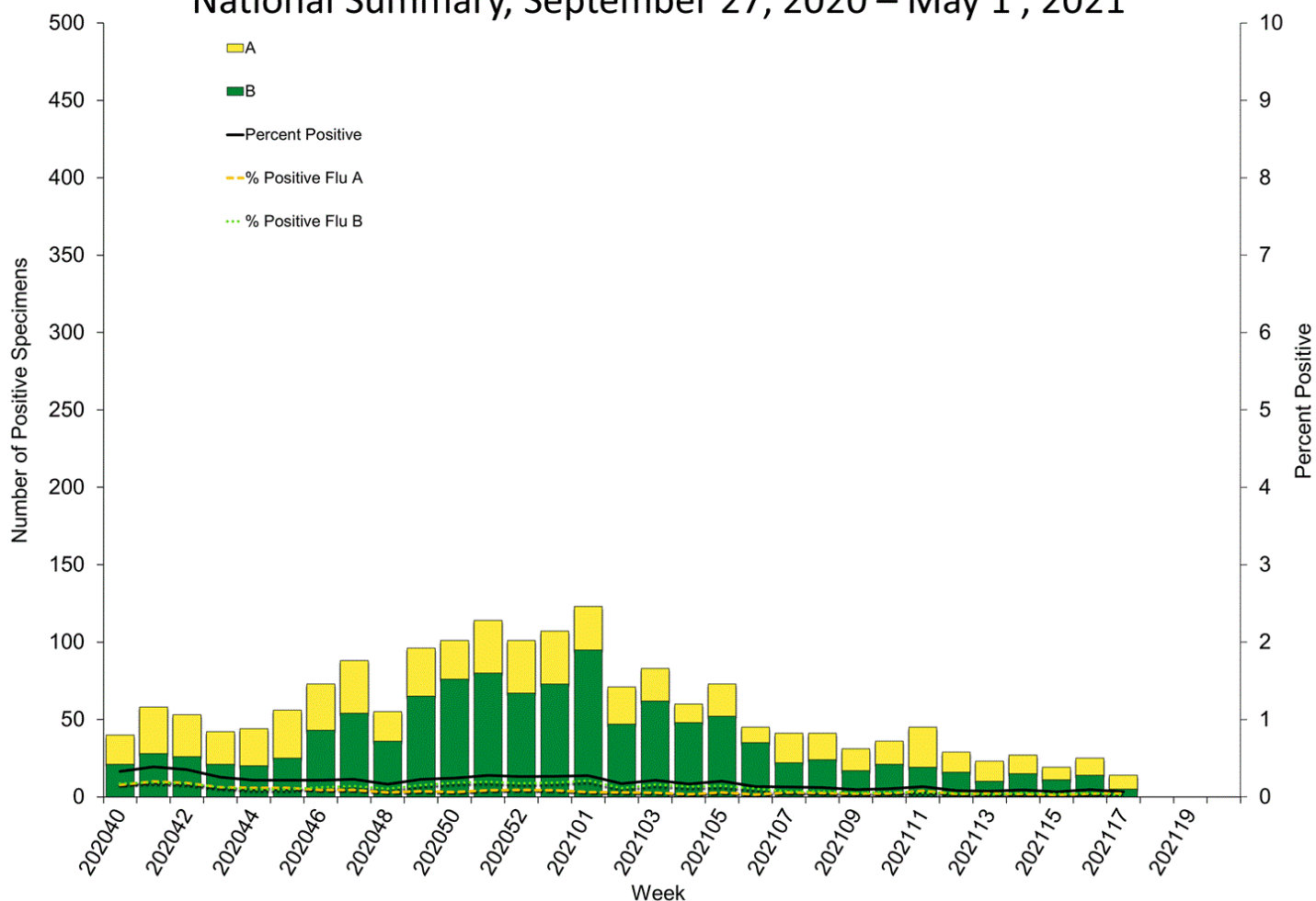
(https://www.cdc.gov/flu/weekly/overview.htm#anchor_1539281228772)

Clinical Laboratories

The results of tests performed by clinical laboratories nationwide are summarized below. Data from clinical laboratories (the percentage of specimens tested that are positive for influenza) are used to monitor whether influenza activity is increasing or decreasing.

	Week 17	Data Cumulative since September 27, 2020 (Week 40)
No. of specimens tested	21,477	989,837
No. of positive specimens (%)	14 (0.1%)	1,814 (0.2%)
<i>Positive specimens by type</i>		
Influenza A	9 (64.3%)	666 (36.7%)
Influenza B	5 (35.7%)	1,148 (63.3%)

Influenza Positive Tests Reported to CDC by U.S. Clinical Laboratories, National Summary, September 27, 2020 – May 1, 2021



<http://gis.cdc.gov/grasp/fluview/fluportaldashboard.html>

[View Chart Data \(/flu/weekly/weeklyarchives2020-2021/data/whoAllregt_cl17.html\)](/flu/weekly/weeklyarchives2020-2021/data/whoAllregt_cl17.html) | [View Full Screen \(/flu/weekly/weeklyarchives2020-2021/WhoNPHL17.html\)](/flu/weekly/weeklyarchives2020-2021/WhoNPHL17.html)

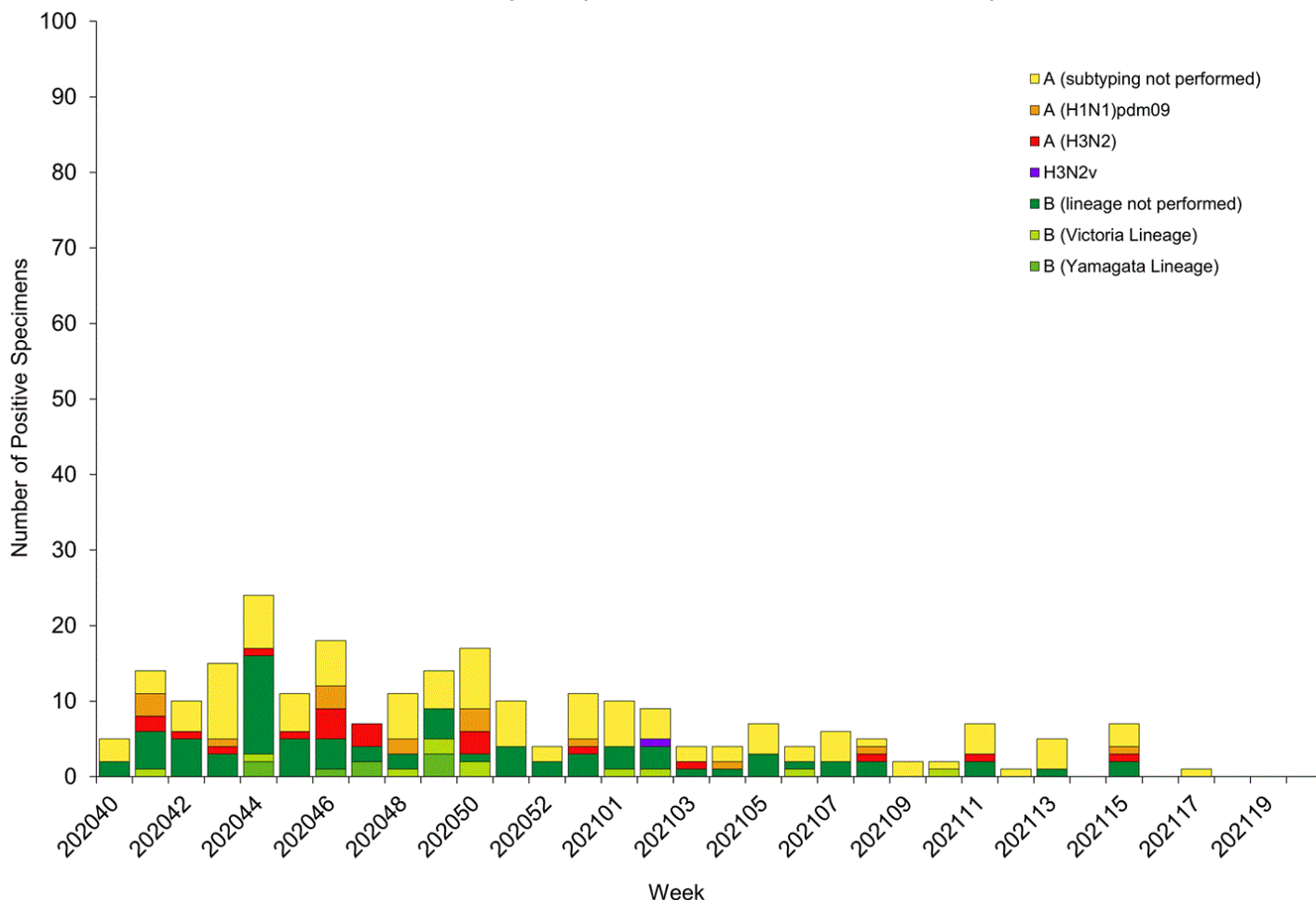
Public Health Laboratories

The results of tests performed by public health laboratories nationwide are summarized below. Data from public health laboratories are used to monitor the proportion of circulating viruses that belong to each influenza subtype/lineage.

	Week 17	Data Cumulative since September 27, 2020 (Week 40)
No. of specimens tested	11,512	463,374
No. of positive specimens	1	245

<i>Positive specimens by type/subtype</i>		
Influenza A	1 (100.0%)	150 (61.2%)
(H1N1)pdm09	0	16 (42.1%)
H3N2	0	21 (55.3%)
H3N2v	0	1 (2.6%)
Subtyping not performed	0	112
Influenza B	0 (0.0%)	95 (38.8%)
Yamagata lineage	0	8 (42.1%)
Victoria lineage	0	11 (57.9%)
Lineage not performed	0	76

Influenza Positive Tests Reported to CDC by U.S. Public Health Laboratories, National Summary, September 27, 2020 – May 1, 2021



<http://gis.cdc.gov/grasp/fluview/fluportaldashboard.html>

[View Chart Data \(/flu/weekly/weeklyarchives2020-2021/data/whoAllregt_phl17.html\)](/flu/weekly/weeklyarchives2020-2021/data/whoAllregt_phl17.html) | [View Full Screen \(/flu/weekly/weeklyarchives2020-2021/WhoPHL17.html\)](/flu/weekly/weeklyarchives2020-2021/WhoPHL17.html)

Additional virologic surveillance information for current and past seasons:

Surveillance Methods (https://www.cdc.gov/flu/weekly/overview.htm#anchor_1539281228772) | FluView Interactive: [National](#), [Regional](#), and [State Data \(http://gis.cdc.gov/grasp/fluview/fluportaldashboard.html\)](#) or [Age Data \(http://gis.cdc.gov/grasp/fluview/flu_by_age_virus.html\)](#)

Influenza Virus Characterization

(/flu/weekly/overview.htm#anchor_1571167630754)

CDC performs [genetic](/flu/about/professionals/genetic-characterization.htm) and [antigenic](/flu/about/professionals/antigenic.htm) characterization of U.S. viruses submitted from state and local health laboratories using Right Size Roadmap submission guidance. These data are used to compare how similar the currently circulating influenza viruses are to the reference viruses representing viruses contained in the current influenza vaccines and to monitor evolutionary changes that continually occur in influenza viruses circulating in humans. CDC also tests susceptibility of influenza viruses to antiviral medications, including the neuraminidase inhibitors (oseltamivir, zanamivir, and peramivir) and the PA endonuclease inhibitor baloxavir.

Virus characterization data will be updated later this season when a sufficient number of specimens have been tested.

Outpatient Illness Surveillance

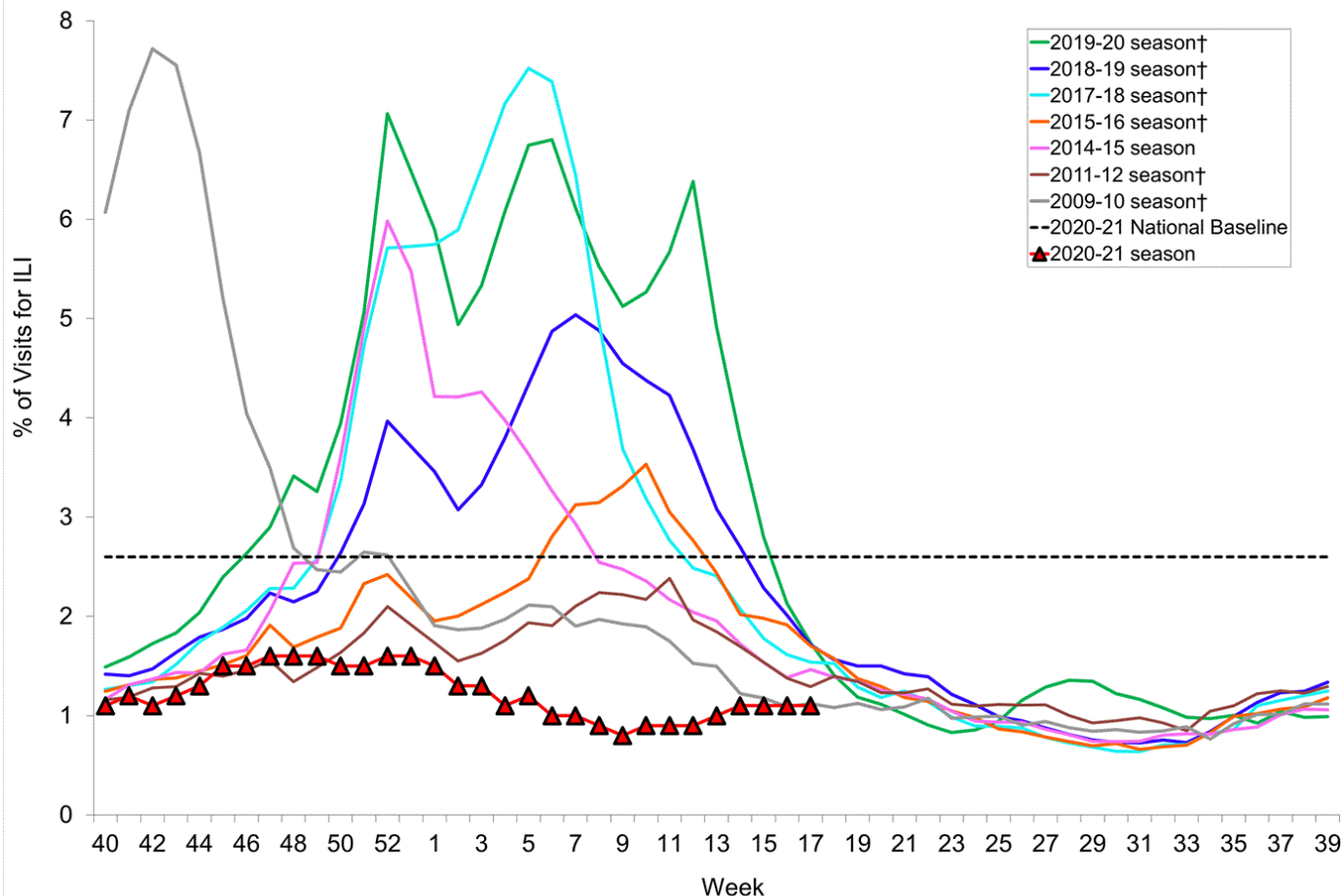
(https://www.cdc.gov/flu/weekly/overview.htm#anchor_1539281266932)

Please note, the U.S. Outpatient Influenza-like Illness Surveillance Network (ILINet) monitors outpatient visits for influenza-like illness (ILI), not laboratory-confirmed influenza, and will capture visits due to other respiratory pathogens, such as SARS-CoV-2, that present with similar symptoms. In addition, health care-seeking behaviors have changed dramatically during the COVID-19 pandemic. Many people are accessing the health care system in alternative settings, which may or may not be captured as a part of ILINet. Therefore, ILI data, including ILI activity levels, should be interpreted with caution. It is particularly important at this time to evaluate syndromic surveillance data, including that from ILINet, in the context of other sources of surveillance data to obtain a complete and accurate picture of both influenza and COVID-19 activity. CDC is tracking the COVID-19 pandemic in a weekly publication called [COVID Data Tracker Weekly Review](https://www.cdc.gov/coronavirus/2019-ncov/covid-data/covidview/index.html) (<https://www.cdc.gov/coronavirus/2019-ncov/covid-data/covidview/index.html>).

ILINet

Nationwide during week 17, 1.1% of patient visits reported through ILINet were due to ILI. This percentage is below the national baseline of 2.6%.

Percentage of Visits for Influenza-like Illness (ILI) Reported by the U.S. Outpatient Influenza-like Illness Surveillance Network (ILINet), Weekly National Summary, 2020-2021 and Selected Previous Seasons



†These seasons did not have a week 53, so the week 53 value is an average of week 52 and week 1.

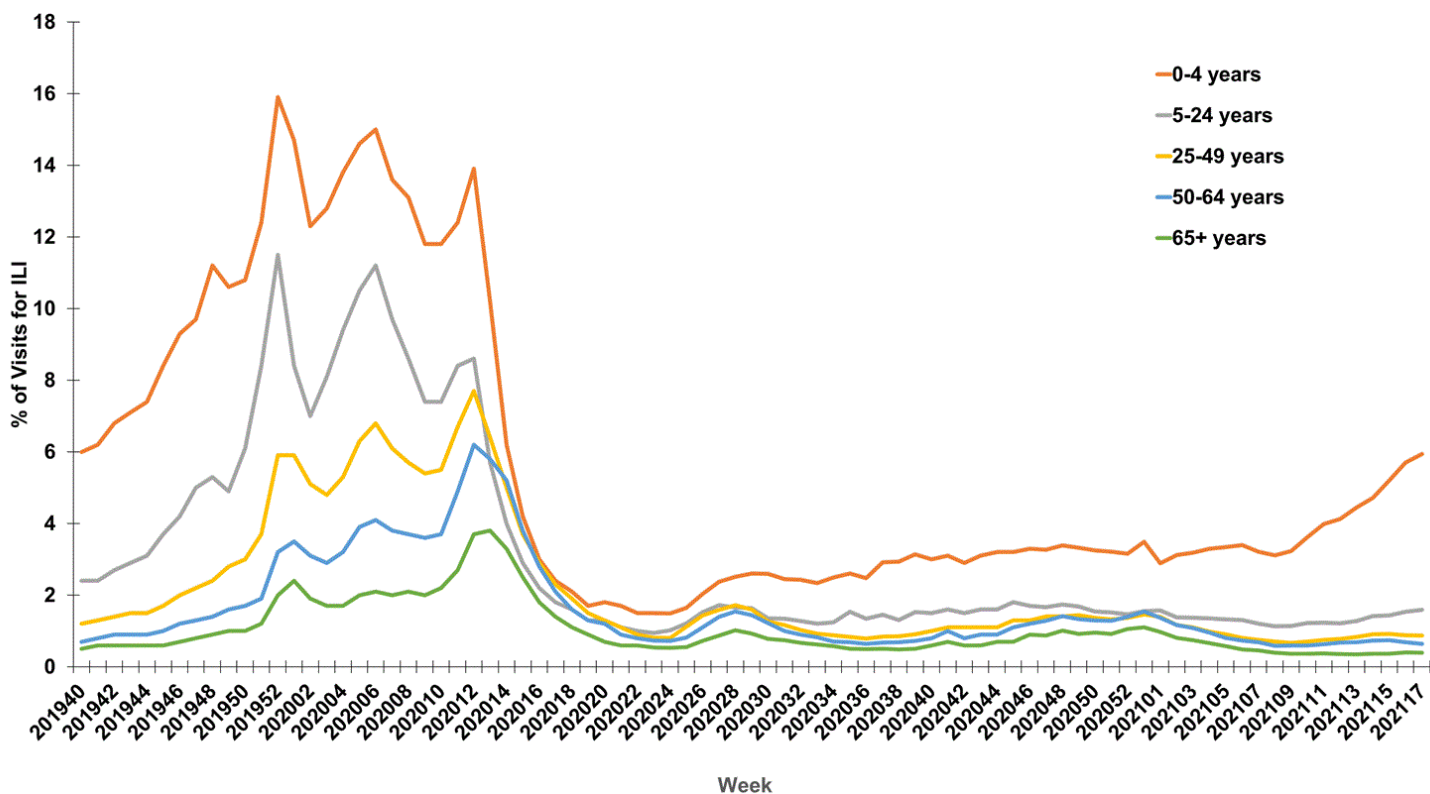
<http://gis.cdc.gov/grasp/fluview/fluportaldashboard.html> View Chart Data (current season only) (</flu/weekly/weeklyarchives2020-2021/data/senAllregt17.html>) | View Full Screen (</flu/weekly/weeklyarchives2020-2021/ILI17.html>)

During week 17, compared with week 16, the percentage of visits for ILI remained stable (change of $\leq 0.1\%$) in all ten regions. All regions reported percentages of outpatient visits for ILI below their region-specific baselines.

ILI Visits by Age Group

About 65% of ILINet providers provide both the number of patient visits for ILI and the total number of patient visits for the week broken out by age group. Data from this subset of providers are used to calculate the percentages of patient visits for ILI by age group. The percentages of visits for ILI reported in ILINet in week 17 increased for one age group (0–4 years) and remained stable (change of $\leq 0.1\%$) for the remaining age groups (5–24 years, 25–49 years, 50–64 years, and 65 years and older) compared with week 16. There has been an increasing trend among persons aged 0–4 years, while the remaining age groups have experienced a stable or slightly increasing trend.

**Percentage of Visits for Influenza-Like Illness (ILI) by Age Group
Reported by the U.S. Outpatient Influenza-like Illness Surveillance Network (ILINet),
Weekly National Summary, 2019-2020 and 2020-2021 Seasons**



<http://gis.cdc.gov/grasp/fluview/fluportaldashboard.html> View Chart Data (flu/weekly/weeklyarchives2020-2021/data/iliage17.html) | View Full Screen (flu/weekly/weeklyarchives2020-2021/ILIAge17.html)

ILI Activity Map

Data collected in ILINet are used to produce a measure of **ILI activity***

https://www.cdc.gov/flu/weekly/overview.htm#anchor_1571167821424 by state/jurisdiction and Core Based Statistical Areas (CBSA).

Activity Level	Number of Jurisdictions		Number of CBSAs	
	Week 17 (Week ending May. 1, 2021)	Week 16 (Week ending Apr. 24, 2021)	Week 17 (Week ending May. 1, 2021)	Week 16 (Week ending Apr. 24, 2021)
Very High	0	0	0	0
High	0	0	0	0
Moderate	0	0	1	3
Low	0	0	29	32
Minimal	55	55	579	597
Insufficient Data	0	0	320	297

A Weekly Influenza Surveillance Report Prepared by the Influenza Division

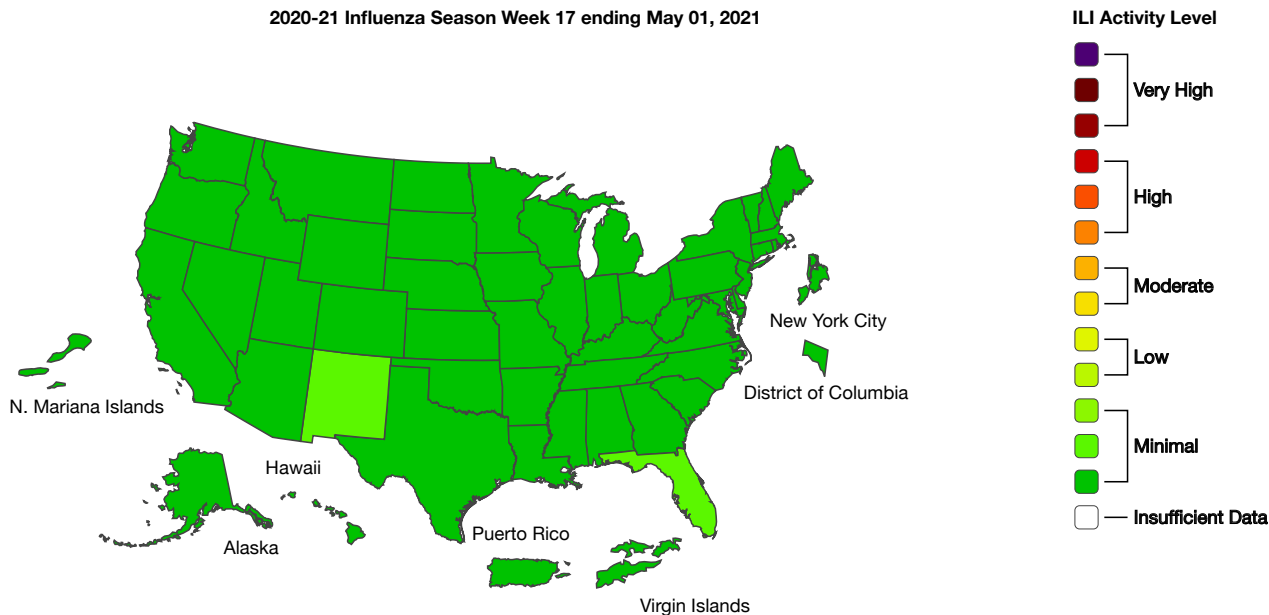
Influenza-Like Illness (ILI) Activity Level Indicator Determined by Data Reported to ILINet

prev Play Pause next



State CBSA

2020-21 Influenza Season Week 17 ending May 01, 2021



Season: 2020-21 ▲

Download Image

Download Data

(<https://www.cdc.gov/flu/weekly/fluereport.xml>)View Full Screen (<http://gis.cdc.gov/grasp/fluview/main.html>)

*Data collected in ILINet may disproportionately represent certain populations within a jurisdiction or CBSA, and therefore, may not accurately depict the full picture of influenza activity for the entire jurisdiction or CBSA. Differences in the data presented here by CDC and independently by some health departments likely represent differing levels of data completeness with data presented by the health department likely being the more complete.

Additional information about medically attended visits for ILI for current and past seasons:

Surveillance Methods (https://wcm5-wp.cdc.gov/flu/weekly/overview.htm#anchor_1539281266932) | FluView Interactive: National, Regional, and State Data (<http://gis.cdc.gov/grasp/fluview/fluportaldashboard.html>) or ILI Activity Map (<https://gis.cdc.gov/grasp/fluview/main.html>)

Geographic Spread of Influenza as Assessed by State and Territorial Epidemiologists

(https://www.cdc.gov/flu/weekly/overview.htm#anchor_1568388833450)

The geographic spread of influenza as reported by state and territorial epidemiologists indicates geographic spread of influenza viruses but does not measure the severity of influenza activity. Due to the impact of COVID-19 on ILI surveillance, and the fact that the state and territorial epidemiologists report relies heavily on ILI activity, reporting for this system will be suspended for the 2020-21 influenza season. Data from previous seasons is available on FluView Interactive.

Additional geographic spread surveillance information for current and past seasons:

Surveillance Methods (https://wcmis-wp.cdc.gov/flu/weekly/overview.htm#anchor_1568388833450) | FluView Interactive (<https://gis.cdc.gov/grasp/fluview/FluView8.html>)

Influenza-Associated Hospitalizations:

(<http://www.cdc.gov/flu/weekly/overview.htm#Hospitalization>)

The Influenza Hospitalization Surveillance Network (FluSurv-NET) conducts population-based surveillance for laboratory-confirmed influenza-related hospitalizations in select counties in 14 states and represents approximately 9% of the U.S. population.

Between October 1, 2020, and April 30, 2021, FluSurv-NET sites in 14 states reported 226 laboratory confirmed influenza hospitalizations for an overall cumulative hospitalization rate of 0.8 per 100,000 population. This is lower than rates for any season since routine data collection began in 2005, including the low severity 2011-12 season. The current rate is one-tenth the rate during the 2011-12 season. Due to low case counts, only overall cumulative rates for the entire network are being reported this season.

Additional hospitalization surveillance information for current and past seasons and additional age groups:

Surveillance Methods (<https://www.cdc.gov/flu/weekly/overview.htm#Hospitalization>) | FluView Interactive: Rates by Age (<https://gis.cdc.gov/GRASP/Fluview/FluHospRates.html>) or Patient Characteristics (<https://gis.cdc.gov/grasp/fluview/FluHospChars.html>)

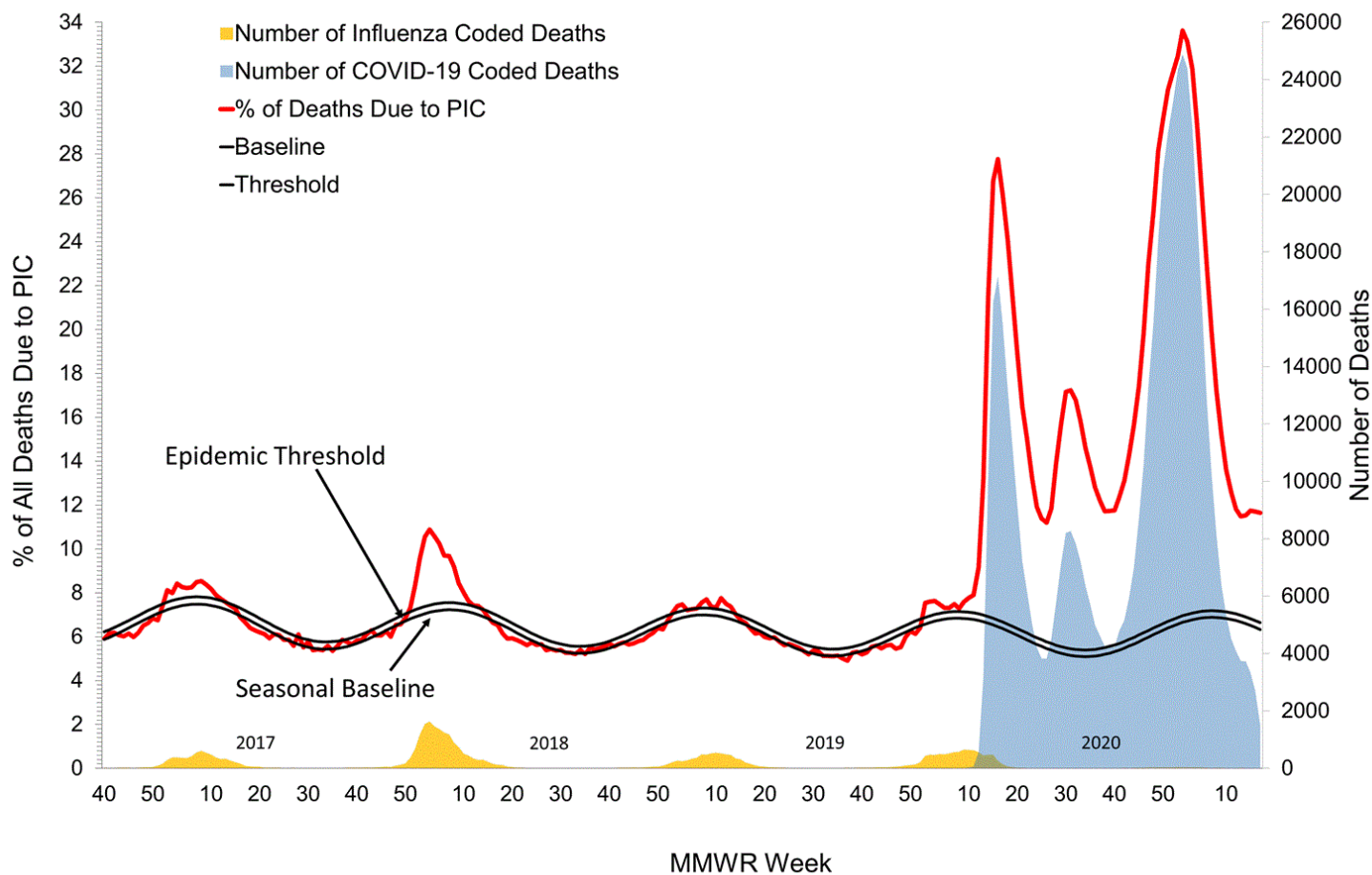
National Center for Health Statistics (NCHS) Mortality Surveillance

(https://www.cdc.gov/flu/weekly/overview.htm#anchor_1539281356004)

Based on NCHS mortality surveillance data available on May 6, 2021, 11.7% of the deaths that occurred during the week ending May 1, 2021 (week 17), were due to pneumonia, influenza, and/or COVID-19 (PIC). This percentage is above the epidemic threshold of 6.6% for week 17. Among the 2,267 PIC deaths reported for this week (week 17), 1,485 had COVID-

19 listed as an underlying or contributing cause of death on the death certificate, and one listed influenza, indicating that current PIC mortality is due primarily to COVID-19 and not influenza. The data presented are preliminary and may change as more data are received and processed.

Pneumonia, Influenza, and COVID-19 Mortality from the National Center for Health Statistics Mortality Surveillance System Data through the week ending May 1, 2021, as of May 6, 2021



<https://gis.cdc.gov/grasp/fluview/mortality.html> View Chart Data [x](#) [i](#) (/flu/weekly/weeklyarchives2020-2021/data/NCHSData17.csv) | View Full Screen (/flu/weekly/weeklyarchives2020-2021/NCHS17.html)

Additional pneumonia and influenza mortality surveillance information for current and past seasons:

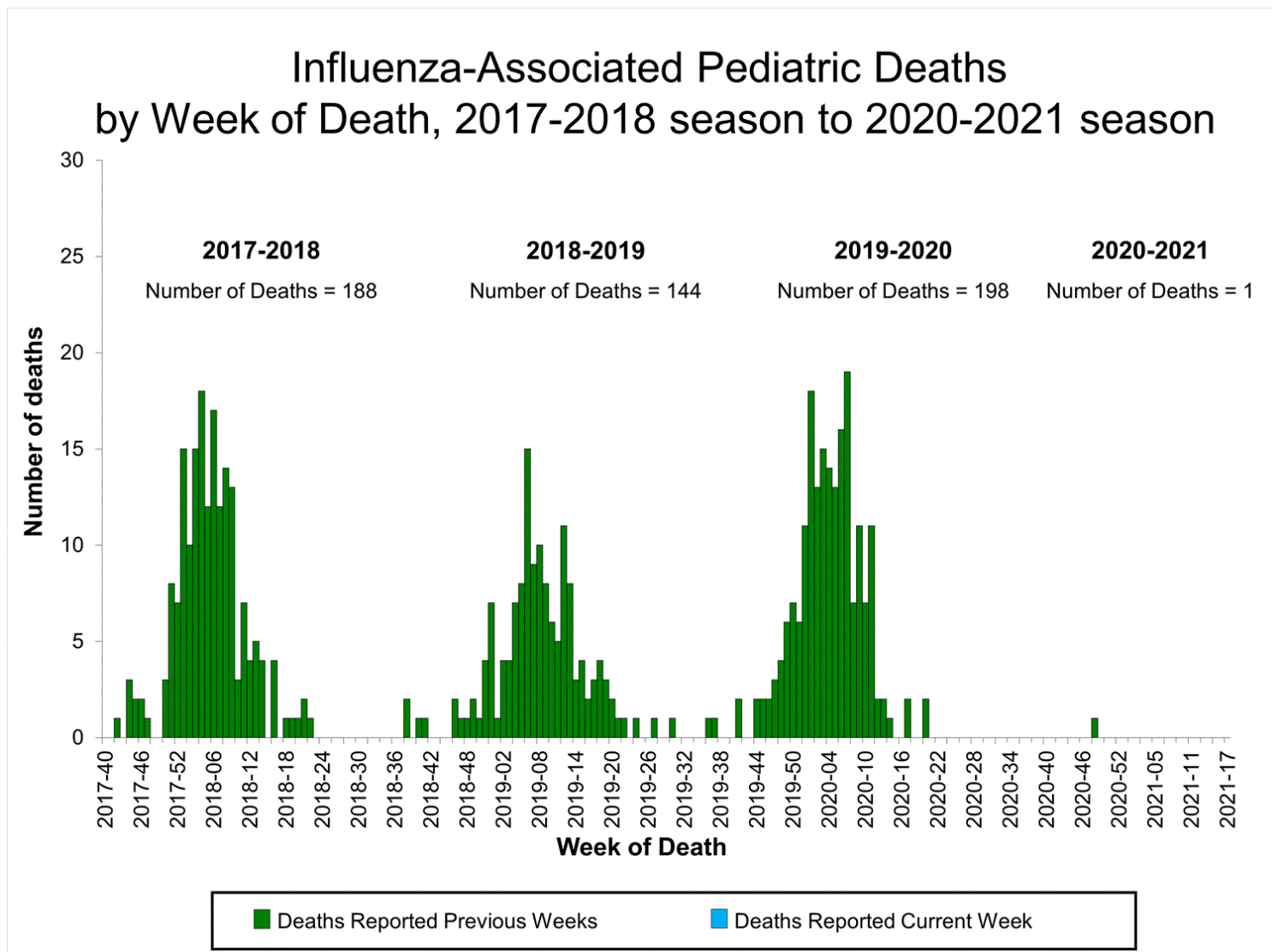
Surveillance Methods (https://www.cdc.gov/flu/weekly/overview.htm#anchor_1539281356004) | FluView Interactive (<https://gis.cdc.gov/grasp/fluview/mortality.html>)

Influenza-Associated Pediatric Mortality

(https://www.cdc.gov/flu/weekly/overview.htm#anchor_1571168571052)

No influenza-associated pediatric deaths were reported to CDC during week 17.

One influenza-associated pediatric death occurring during the 2020-2021 season has been reported to CDC.



<http://gis.cdc.gov/GRASP/Fluview/PedFluDeath.html>

[View Full Screen \(/flu/weekly/weeklyarchives2020-2021/PedFlu17.html\)](/flu/weekly/weeklyarchives2020-2021/PedFlu17.html)

Additional pediatric mortality surveillance information for current and past seasons:

Surveillance Methods (https://www.cdc.gov/flu/weekly/overview.htm#anchor_1571168571052) | [FluView Interactive](#)

(<https://gis.cdc.gov/GRASP/Fluview/PedFluDeath.html>)

Additional National and International Influenza Surveillance

Information

FluView Interactive: FluView includes enhanced web-based interactive applications that can provide dynamic visuals of the influenza data collected and analyzed by CDC. These [FluView Interactive applications](http://www.cdc.gov/flu/weekly/fluviewinteractive.htm) (<http://www.cdc.gov/flu/weekly/fluviewinteractive.htm>) allow people to create customized, visual interpretations of influenza data, as well as make comparisons across flu seasons, regions, age groups and a variety of other demographics.

National Institute for Occupational Safety and Health: Monthly surveillance data on the prevalence of health-related workplace absenteeism among full-time workers in the United States are [available from NIOSH](https://www.cdc.gov/niosh/topics/absences/default.html) (<https://www.cdc.gov/niosh/topics/absences/default.html>).

U.S. State and local influenza surveillance: Select a jurisdiction below to access the latest local influenza information.

Alabama (<http://adph.org/influenza/>)

Alaska (<http://dhss.alaska.gov/dph/Epi/id/Pages/influ>)

Colorado (<https://www.colorado.gov/pacific/cdphe/influenza>)

Connecticut (<https://portal.ct.gov/DPH/Epidemiolog>)

Georgia (<https://dph.georgia.gov/epidemiology/influenza/flu-activity-georgia>)

Hawaii (<http://health.hawaii.gov/docd/resources/rep>)

Iowa (<http://idph.iowa.gov/influenza/surveillance>)

Kansas (<http://www.kdheks.gov/flu/surveillance.htm>)

Maryland (<https://phpa.health.maryland.gov/influenza/fluwatch/>)

Massachusetts (<https://www.mass.gov/influenza>)

Missouri
(<http://health.mo.gov/living/healthcondiseases/communicable/influenza/reports.php>)

Montana (<http://dphhs.mt.gov/publichealth/cdepi/d>)

New Jersey (<http://www.nj.gov/health/cd/topics/flu.shtml>)

New Mexico (<https://nmhealth.org/about/erd/ideb/>)

Ohio (<http://www.flu.ohio.gov>)

Oklahoma
(https://www.ok.gov/health/Prevention_and_Prepared)

South Carolina
(<http://www.scdhec.gov/Health/DiseasesandConditions/InfectiousDiseases/Flu/FluData/>)

South Dakota (<https://doh.sd.gov/diseases/infectio>)

Vermont (<http://www.healthvermont.gov/immunizations-infectious-disease/influenza/flu-activity-and-surveillance>)

Virginia (<http://www.vdh.virginia.gov/epidemiology/i>)

Wyoming (<https://health.wyo.gov/publichealth/infectious-disease-epidemiology-unit/disease/influenza/>)

New York City (<http://www1.nyc.gov/site/doh/provi>)

World Health Organization:

Additional influenza surveillance information from participating WHO member nations is available through FluNet [↗](http://www.who.int/influenza/gisrs_laboratory/flunet/en/index.html) (http://www.who.int/influenza/gisrs_laboratory/flunet/en/index.html) and the Global Epidemiology Reports. [↗](http://www.who.int/influenza/surveillance_monitoring/en/) (http://www.who.int/influenza/surveillance_monitoring/en/)

WHO Collaborating Centers for Influenza:

Australia [↗](http://www.influenzacentre.org/surveillance_samplesreceived.htm) (http://www.influenzacentre.org/surveillance_samplesreceived.htm), China [↗](http://www.chinaivdc.cn/cnic/) (<http://www.chinaivdc.cn/cnic/>), Japan [↗](http://idsc.nih.go.jp/index.html) (<http://idsc.nih.go.jp/index.html>), the United Kingdom [↗](https://www.crick.ac.uk/research/worldwide-influenza-centre) (<https://www.crick.ac.uk/research/worldwide-influenza-centre>), and the United States (<http://www.cdc.gov/flu/>) (CDC in Atlanta, Georgia)

Europe:

The most up-to-date influenza information from Europe is available from WHO/Europe and the European Centre for Disease Prevention and Control [↗](http://www.flunewseurope.org/) (<http://www.flunewseurope.org/>).

Public Health Agency of Canada:

The most up-to-date influenza information from Canada is available in Canada's weekly FluWatch report [↗](http://www.phac-aspc.gc.ca/fluwatch/) (<http://www.phac-aspc.gc.ca/fluwatch/>).

Public Health England:

The most up-to-date influenza information from the United Kingdom is available from Public Health England [↗](http://www.hpa.org.uk/Topics/InfectiousDiseases/InfectionsAZ/SeasonalInfluenza/) (<http://www.hpa.org.uk/Topics/InfectiousDiseases/InfectionsAZ/SeasonalInfluenza/>).

Any links provided to non-Federal organizations are provided solely as a service to our users. These links do not constitute an endorsement of these organizations or their programs by CDC or the Federal Government, and none should be inferred. CDC is not responsible for the content of the individual organization web pages found at these links.

A description of the CDC influenza surveillance system, including methodology and detailed descriptions of each data component is available on the [surveillance methods](http://www.cdc.gov/flu/weekly/overview.htm) (<http://www.cdc.gov/flu/weekly/overview.htm>) page.

Page last reviewed: May 7, 2021, 11:00 AM

Content source: Centers for Disease Control and Prevention (<https://www.cdc.gov/>), National Center for Immunization and Respiratory Diseases (NCIRD) (<https://www.cdc.gov/ncird/index.html>)