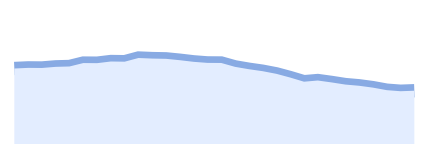


COVID Data Tracker

Cases in US **32,267,958**

Cases in US Last 30 Days



Total Vaccines Administered **248M**

Deaths in US **574,679**

Deaths in US Last 30 Days



- Data Tracker Home
- COVID Data Tracker Weekly Review
- Your Community +
- Vaccinations +
- Cases & Deaths +
- Demographic Trends +
- Health Care Settings +
- Genomic Surveillance +
- Testing and Seroprevalence +
- People at Increased Risk -
- Underlying Medical Conditions
 - Pregnant Women: Maternal Illness Severity**
 - Correctional Facilities
- Prevention Measures and Social Impact +
- Communications Resources

COVID-19 Home

Get Email Updates

Sign up to receive the COVID Data Tracker Weekly Review.

Email Address:

What's this?

Data on COVID-19 during Pregnancy: Severity of Maternal Illness

Monitoring the impact of COVID-19 during pregnancy can protect pregnant women and their babies; maps, charts, and data provided by CDC

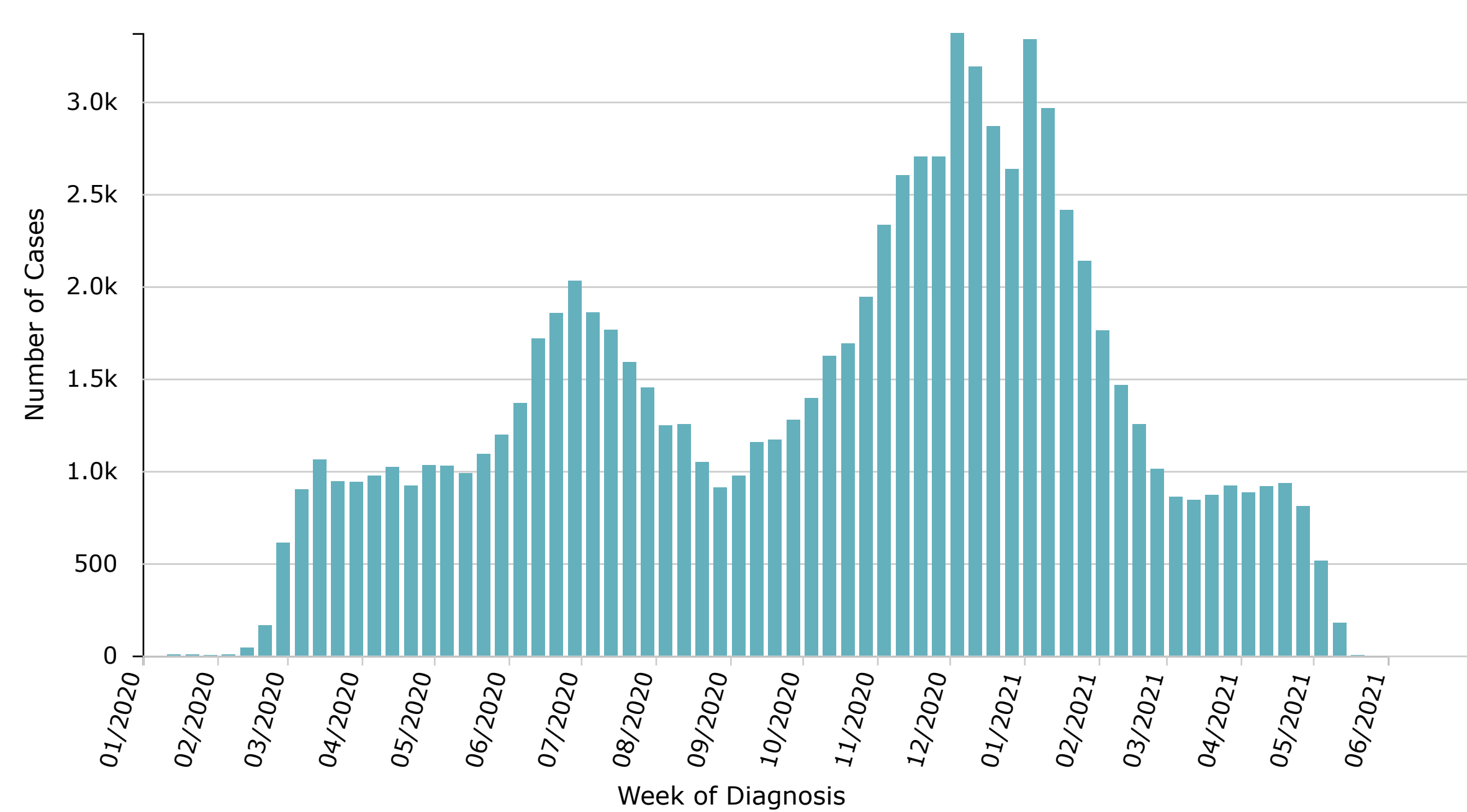
Looking for data on birth and infant outcomes among pregnant women with COVID-19? Visit CDC's Birth and Infant Outcomes data page for information on delivery type, preterm birth, and infant test results.

Pregnant women¹ with COVID-19, United States, January 22, 2020 - May 3, 2021



Cases of COVID-19 among Pregnant Women by Week of Diagnosis*

Data were collected from 88,880 women and date of diagnosis** was available for 88,880 (100%) women.



*There is about a 2-4 week delay in the data for a jurisdiction to confirm a case of SARS-CoV-2 in a pregnant woman and report it to CDC.

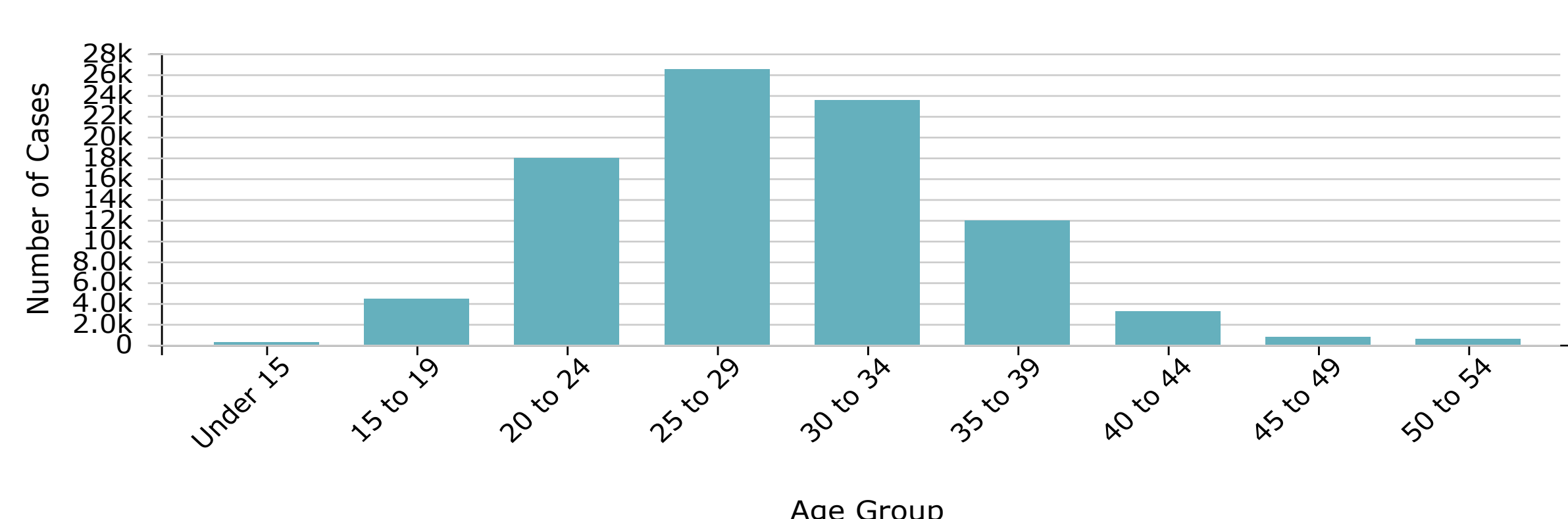
**Date of diagnosis is derived from the earliest date of either 1) when the case report was received by CDC from a jurisdictional health department or 2) the earliest available date related to the illness or specimen collection.

More information on this dataset: [COVID-19 Case Surveillance Public Use Data](#)

[Download Chart](#)

Pregnant women with COVID-19 by age, United States, January 22, 2020 - May 3, 2021

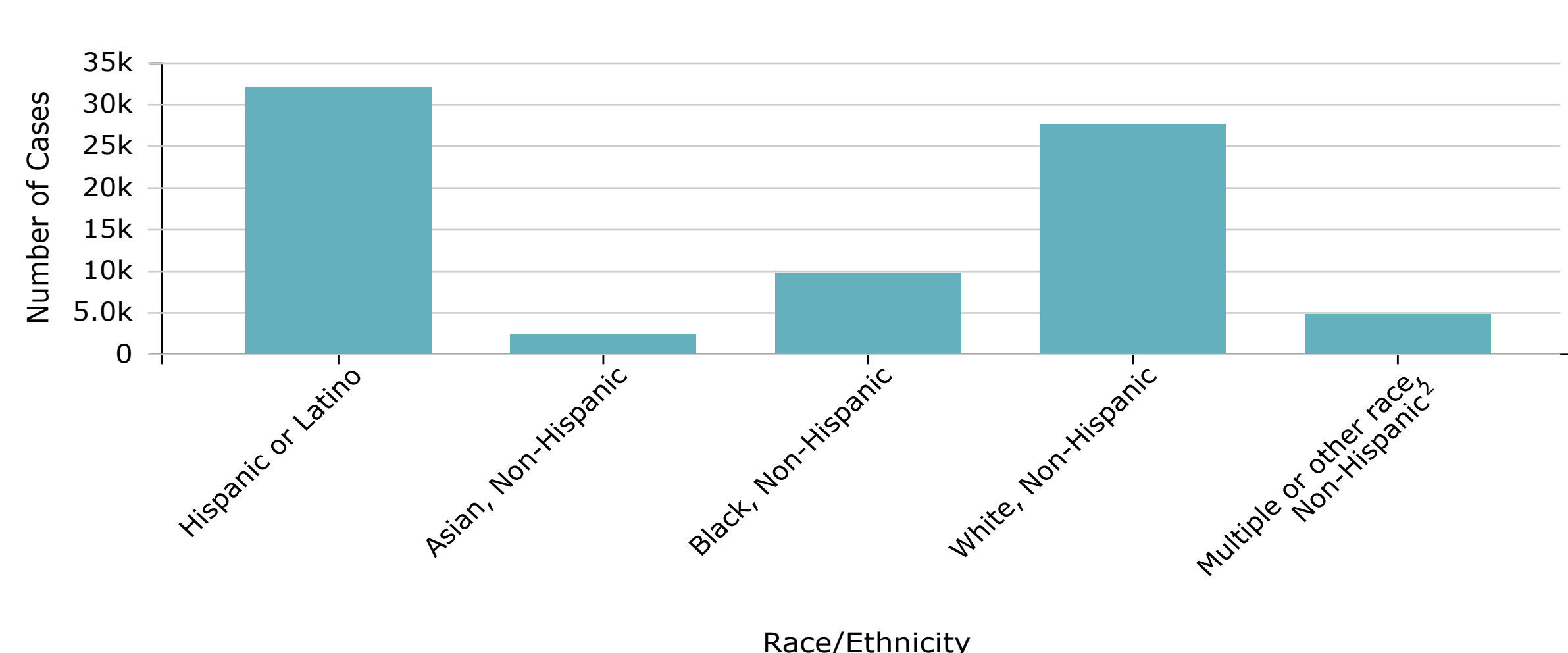
Data were collected from 88,880 women, and age was available for 88,880 (100%) women.



[Download Chart](#)

Pregnant women with COVID-19 by race/ethnicity, United States, January 22, 2020 - May 3, 2021

Data were collected from 88,880 women, but race/ethnicity was only available for 76,385 (85.9%) women.



[Download Chart](#)

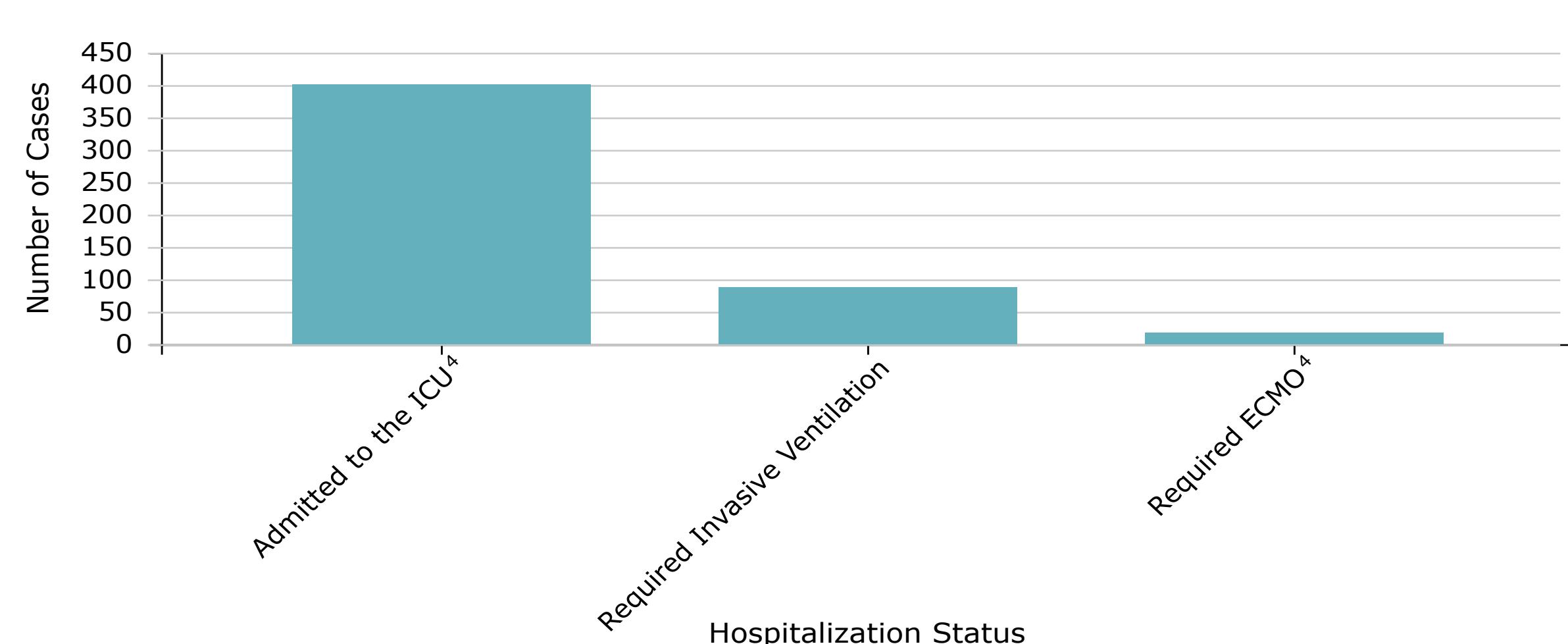
Pregnant Women with COVID-19 who were hospitalized, United States, January 22, 2020 - May 3, 2021

Data were collected from 88,880 women, but hospitalization data were only available for 71,152 (80.1%).



Pregnant women with COVID-19 admitted to the ICU, who required invasive ventilation, or who required ECMO, United States, January 22, 2020 - May 3, 2021

Data were collected from 88,880 women, but ICU admission data were only available for 12,146 (13.7%) women, invasive ventilation data were only available for 8,194 (9.2%) women, and ECMO data were only available for 8,818 (9.9%).



[Download Chart](#)

¹Cases with age <9 years and >54 years are excluded. Cases with unknown age are included.

²Other race includes non-Hispanic American Indian or Alaska Native or non-Hispanic Native Hawaiian or Other Pacific Islander

³Data were not available to distinguish hospitalization for COVID-19-related indications, such as worsening respiratory status, from hospital admission for pregnancy-related indications, such as delivery.

⁴Abbreviation: ICU, intensive care unit; ECMO, extracorporeal membrane oxygenation, an advanced life support technique used for patients with life-threatening heart and/or lung problems.

[Data Table for COVID-19 during Pregnancy](#)

[Data Table for Cases of COVID-19 Among Pregnant Women by Week of Diagnosis](#)

Looking for data on birth and infant outcomes among pregnant women with COVID-19?

Visit CDC's Birth and Infant Outcomes data page for information on delivery type, preterm birth, and infant test results

Want to learn more about COVID-19 risk for pregnant women and those who are breastfeeding?

Find more information and resources for pregnancy, breastfeeding, and caring for newborns during the COVID-19 pandemic

[View and Download COVID-19 Case Surveillance Public Use Data with Geography](#)

This webpage is updated weekly. The cases reported include only confirmed cases with laboratory evidence of SARS-CoV-2 infection.

About the Data:

There are currently 56 U.S.-affiliated jurisdictions reporting cases of COVID-19 to CDC. This includes 50 states, District of Columbia, Guam, New York City, the Northern Mariana Islands, Puerto Rico, and the U.S. Virgin Islands. Only about a third of case report forms include information on pregnancy status. Therefore, these numbers likely do not include all women with COVID-19 in the U.S. and must be interpreted with caution. The completeness of the pregnancy variable continues to improve each week. Increases in the total number of cases of COVID-19 among pregnant women are largely due to the updating of pregnancy status among already reported cases. Case numbers reported on other websites may differ from what is posted on CDC's website because CDC's overall case numbers are validated through a confirmation process with each jurisdiction. Differences between reporting jurisdictions and CDC's website may occur due to the timing of reporting and website updates. The process used for finding and confirming cases reported by other sites may differ. Case counts may fluctuate from week to week due to data quality and cleaning processes.

Since October 2020, CDC has reported reports of cases of COVID-19 among pregnant women who are younger than age 9 and older than age 54 in the weekly reporting. Based on review of data quality, cases reported as pregnant with ages younger than 9 or older than 54 are less likely to be true pregnancies, and more likely to be data errors. Cases with unknown age are still included.

For more information on how CDC collects COVID-19 surveillance data, see [FAQ COVID-19 Data and Surveillance](#)

For surveillance data on birth and infant outcomes from the Surveillance for Emerging Threats to Mothers and Babies Network (SET-NET) see [COVID-19 during Pregnancy: Birth and Infant Outcomes](#)

HAVE QUESTIONS?

- Visit CDC-INFO
- Call 800-232-4636
- Email CDC-INFO
- Open 24/7

CDC INFORMATION

- About CDC
- Jobs
- Funding
- Policies
- File Viewers & Players

Privacy

- FOIA
- No Fear Act
- OIG
- Nondiscrimination
- Accessibility

CONNECT WITH CDC

- Facebook
- Twitter
- Instagram
- LinkedIn
- YouTube
- Google+
- Slack
- RSS
- Email