



COVID-19

CASES ARE RISING.
ACT NOW!



- Home
- Your Health
- Vaccines
- Cases & Data**
- Work & School
- Healthcare Workers
- Health Depts
- More

Cases, Data & Surveillance

- US Cases & Deaths +
- Cases & Deaths by County
- Testing Data in the US +
- Hospitalizations & Emergency Dept Visits +
- Serology (Antibody) Surveillance +
- Estimated COVID-19 Burden
- Wastewater Surveillance +
- Forecasting** -
- Case Forecasts +
- Death Forecasts +
- Hospitalization Forecasts** -
- Previous Hospitalization Forecasts
- Forecasting: Background
- Special Populations Data +
- COVIDView Weekly Summary +
- Sequencing for SARS-CoV-2 (SPHERES)
- Epidemiology for COVID-19 +

Get Email Updates

To receive email updates about COVID-19, enter your email address:

Email Address

What's this?

Submit

COVID-19 Forecasts: Hospitalizations

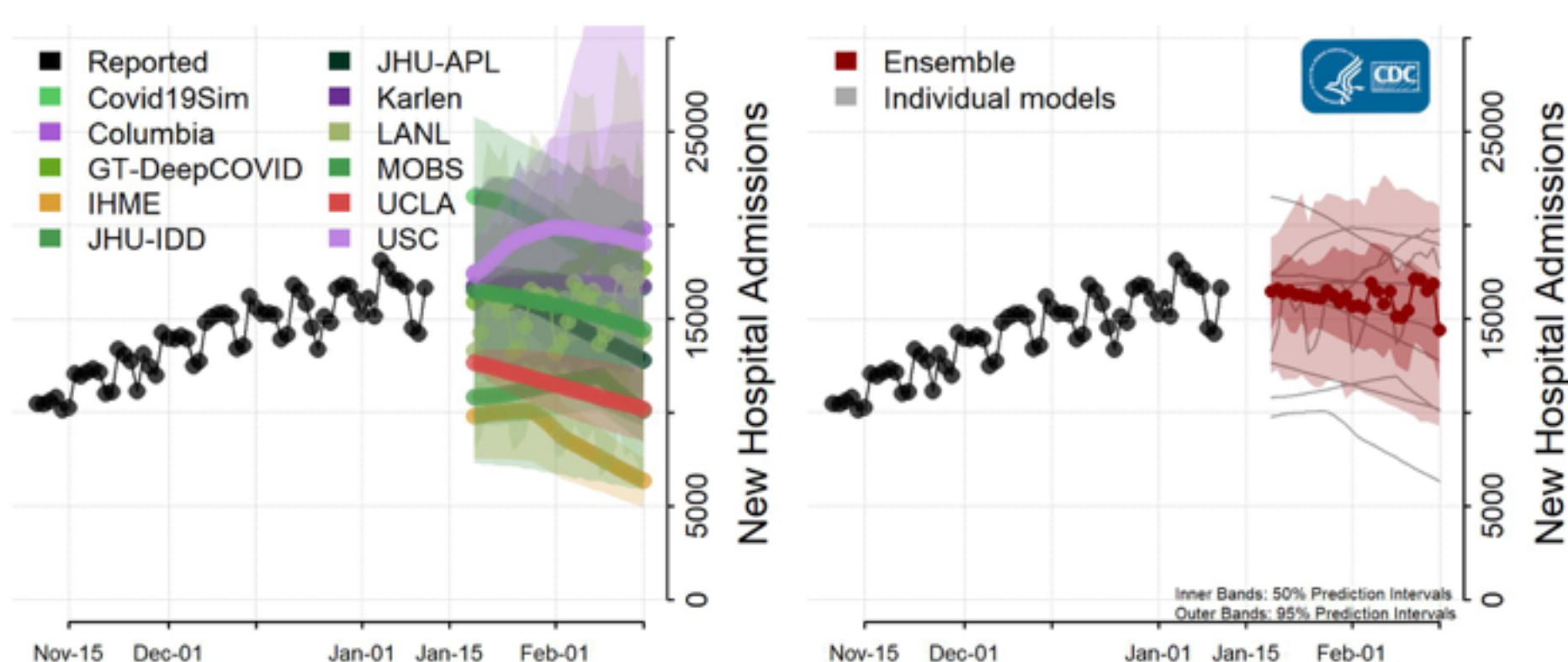
Updated Jan. 20, 2021 Languages Print

Interpretation of Forecasts of New Hospitalizations

- This week, CDC received forecasts of daily, new reported COVID-19 hospital admissions over the next 4 weeks from 13 modeling groups that were included in the ensemble forecasts.
- This week's national ensemble predicts that 9,300 to 21,000 new confirmed COVID-19 hospital admissions will be reported February 15, 2021.
- The state- and territory-level ensemble forecasts predict that over the next 4 weeks, the number of daily confirmed COVID-19 hospital admissions will likely increase in 2 jurisdictions and decrease in 17 jurisdictions, which are indicated in the forecast plots below. Trends in numbers of future reported hospital admissions are uncertain or predicted to remain stable in the other states and territories.
- In previous weeks, all submitted forecasts were displayed, even if they were not included in the ensemble forecasts. Starting this week, only forecasts meeting a set of inclusion criteria are shown for jurisdictions with ensemble forecasts. Further details are available here: <https://covid19forecasthub.org/doc/ensemble/>

National Forecasts

National Forecast



- The figure shows the number of new confirmed COVID-19 hospital admissions reported nationally in the United States each day from November 10, 2020 to January 11, 2021 and the predicted number of new COVID-19 hospital admissions per day for the next 4 weeks, for January 18, 2021 through February 15, 2021.
- The forecasts make different assumptions about hospitalization rates and levels of social distancing and other interventions and use different methods to estimate the number of new hospital admissions. See model descriptions below for details.

[Download national forecast data](#) [XLS - 21 KB]

State Forecasts

State-level forecasts show the predicted number of new COVID-19 hospital admissions per day for the next 4 weeks by state. Each state uses a different scale, due to differences in the number of new COVID-19 hospital admissions per day in each state.

[Download state forecasts](#) [PDF - 2 MB, 14 pages]¹

[Download all forecast data](#) [CSV, 1 MB]

Additional forecast data and information on forecast submission are available at the [COVID-19 Forecast Hub](#).

Forecast Assumptions

The forecasts make different assumptions about social distancing measures and use different methods and data sets to estimate the number of new hospital admissions. Additional individual models details are available here; https://github.com/cdcepi/COVID-19-Forecasts/blob/master/COVID-19_Forecast_Model_Descriptions.md.

Reported daily new hospital admissions can vary due to variable staffing and inconsistent reporting patterns within the week. Thus, daily variations in the reported numbers and the forecasts may not fully represent the true number of confirmed COVID-19 hospital admissions in each jurisdiction on a specific day. Additional information on use of HHS-reported hospital admissions for COVID-19 forecasts is available here: <https://github.com/reichlab/covid19-forecast-hub/blob/master/data-processed/README.md#hospitalizations>.

Social distancing is incorporated into the forecasts in two different ways:

- These modeling groups make assumptions about how levels of social distancing will change in the future:
 - [Columbia University](#) (Model: Columbia)
 - [Covid-19 Simulator Consortium](#) (Model: Covid19Sim)
 - [Institute of Health Metrics and Evaluation](#) (Model: IHME)
 - [Johns Hopkins University, Infectious Disease Dynamics Lab](#) (Model: JHU-IDD)
 - [University of California, Los Angeles](#) (Model: UCLA)
- These modeling groups assume that existing social distancing measures in each jurisdiction will continue through the projected 4-week time period:
 - [Georgia Institute of Technology, College of Computing](#) (Model: GT-DeepCOVID)
 - [Google and Harvard School of Public Health](#) (Model: Google-HSPH)
 - [Johns Hopkins University, Applied Physics Lab](#) (Model: JHU-APL)
 - [Karlen Working Group](#) (Model: Karlen)
 - [Los Alamos National Laboratory](#) (Model: LANL)
 - [Northeastern University, Laboratory for the Modeling of Biological and Socio-technical System](#) (Model: MOBS)
 - [University of California, Santa Barbara](#) (Model: UCSB)
 - [University of Southern California](#) (Model: USC)

¹ The full range of the prediction intervals is not visible for all state plots. Please see the forecast data for the full range of state-specific prediction intervals.

Additional Resources

- [Previous COVID-19 Forecasts: Hospitalizations](#)
- [FAQ: COVID-19 Data and Surveillance](#)
- [CDC COVID Data Tracker](#)
- [COVID-19 Mathematical Modeling](#)



Last Updated Jan. 20, 2021
 Content source: National Center for Immunization and Respiratory Diseases (NCIRD), Division of Viral Diseases

HAVE QUESTIONS?

- Visit CDC-INFO
- Call 800-232-4636
- Email CDC-INFO
- Open 24/7

CDC INFORMATION

- About CDC
- Jobs
- Funding
- Policies
- File Viewers & Players

Privacy

- FOIA
- No Fear Act
- OIG
- Nondiscrimination
- Accessibility

CONNECT WITH CDC



LANGUAGE ASSISTANCE

- Español
- Tagalog
- Français
- Deutsch
- 繁體中文
- Русский
- Polski
- 日本語
- Tiếng Việt
- العربية
- Português
- فارسی
- 한국어
- Kreyòl Ayisyen
- Italiano
- English