



Coronavirus Disease 2019 (COVID-19)

CDC COVID Data Tracker

Maps, charts, and data provided by the CDC, updated daily by 8 pm ET †

- Case Trends ▾
- Vaccinations
- County View ▾
- Laboratory ▾
- Global Cases and Deaths ▾
- Community Impact ▾
- Unique Populations ▾
- Home icon

- Cases and Deaths by State
- US and State Trends
- Compare State Trends
- Demographics
- Trends by Population Factors
- Forecasting
- Trends in ED Visits

Compare Trends in COVID-19 Cases and Deaths in the US

Reported to the CDC by State or Territory

View:
 Cases
 Deaths

Measure:
 Daily
 Cumulative

Metric:
 Raw Totals
 Rate per 100,000

Scale:
 Linear
 Logarithmic

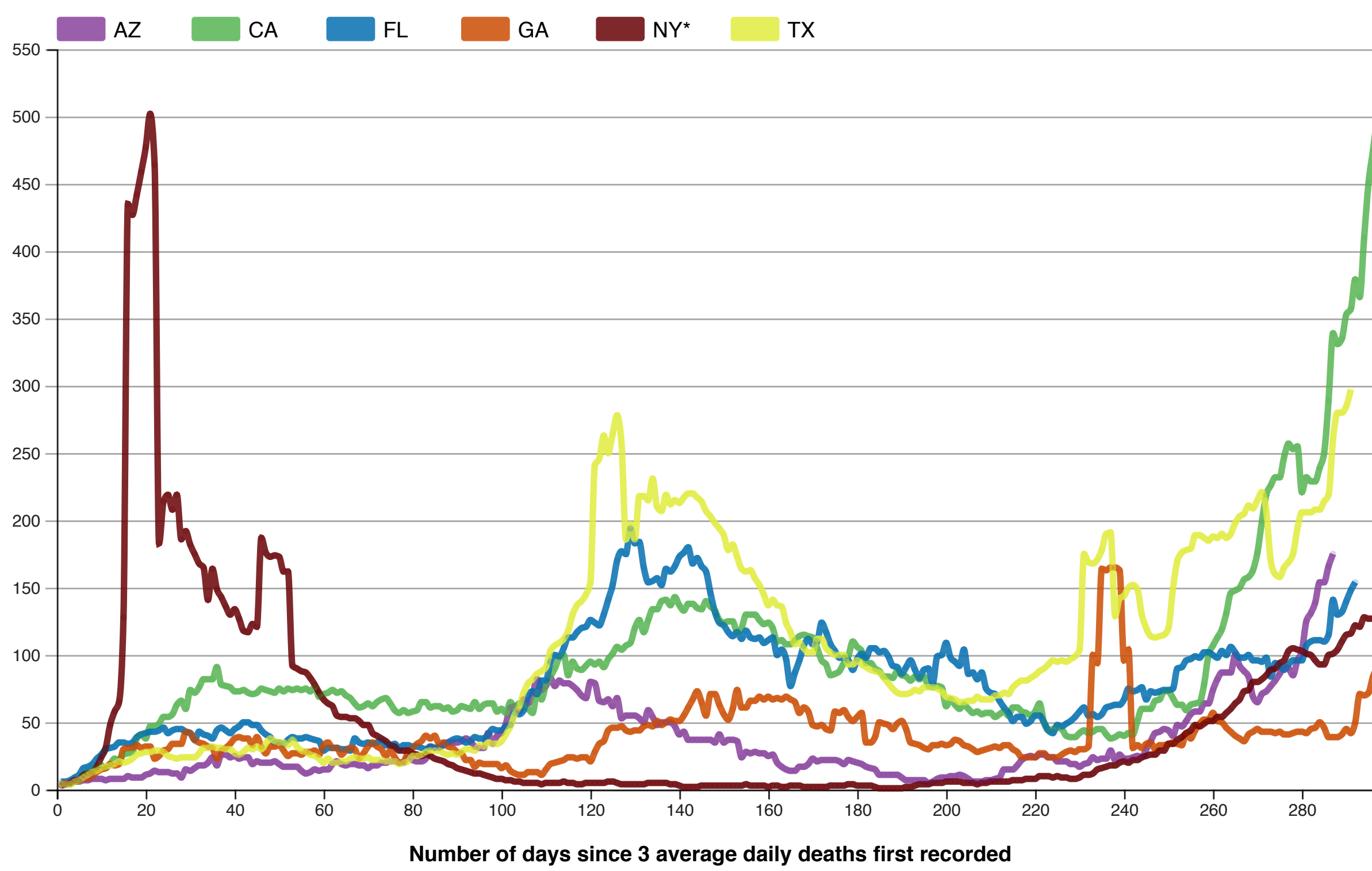
Select up to 6 states or territories:

Arizona x California x Florida x Georgia x New York* x Texas x

Show full US Data (available only in logarithmic scale)

New deaths attributed to Covid-19, reported to CDC, in AZ, CA, FL, GA, NY, and TX

Seven-day moving average of new deaths, by number of days since 3 average daily deaths first recorded.



Download Chart

Data Table for Seven-day moving average of new deaths +

How do your state's trend lines compare to other countries? View [global](#) COVID case and death trends to find out

[View and Download](#) COVID-19 Case Surveillance Public Use Data

† Data will update as soon as they are reviewed and verified, oftentimes before 8 pm ET. However, daily updates might be delayed due to delays in reported data.

Data Sources, References & Notes: The case classifications for COVID-19, a nationally notifiable disease, are described in an [an updated interim COVID-19 position statement and case definition](#) issued by the Council of State and Territorial Epidemiologists on August 5, 2020. However, there is some variation in how jurisdictions implement these case classifications. More information on how CDC collects COVID-19 case surveillance data can be found at [CDC's COVID-19 FAQ webpage](#).

Total cases are based on aggregate counts of COVID-19 cases reported by state and territorial jurisdictions to the Centers for Disease Control and Prevention (CDC) since January 21, 2020, with the exception of persons repatriated to the United States from Wuhan, China, and Japan. All displayed counts include confirmed COVID-19 cases and deaths as reported by U.S. states, U.S. territories, New York City (NYC), and the District of Columbia from the previous day. Counts for certain jurisdictions also include probable COVID-19 cases and deaths. Counts for NYC and New York State are shown separately; data for New York State show total cases and deaths for the state excluding data for NYC. COVID-19 case and death data that are not available to CDC are denoted with an N/A.

The figure and corresponding data table can be modified to show COVID-19 case and death trends for up to six states or territories. When daily cases of COVID-19 are displayed, the index date is when 10 average daily cases were first recorded. When daily deaths attributed to COVID-19 are displayed, the index day is when 3 average daily deaths were first recorded. For both of these measures, the 7-day moving average of new cases or deaths (current day + 6 preceding days divided by 7) was calculated to smooth expected variations in daily counts since the index date.

When cumulative cases or deaths of COVID-19 are displayed, the index date is when 100 total cases or deaths were first recorded. The trend line shows the cumulative cases or deaths by number of days since the index date.

When daily case or death rates per 100,000 are displayed, the index date is when .01 average daily cases or deaths per 100,000 people was first recorded. The trend line shows the 7-day moving-average of new cases or deaths per 100,000 people using the U.S. Census Bureau, 2019* [American Community Survey 1-year estimates](#) by the number of days since the index date.

When cumulative case or death rates per 100,000 are displayed, the index date is when 0.3 total cases per 100,000 people was first recorded. The trend line shows the total cases per 100,000 using the U.S. Census Bureau, 2019* American Community Survey 1-year estimates by the number of days since the index date.

*2018 population estimates are still used for American Samoa, Federated States of Micronesia, Guam, New York City, Northern Mariana Islands, Palau, Republic of Marshall Islands and United States Virgin Islands.

CDC's overall COVID-19 case numbers are validated through a confirmation process with each jurisdiction. COVID-19 case numbers reported on other websites may differ from what is posted on CDC COVID Data Tracker due to the timing of reporting and COVID Data Tracker updates, which may differ by up to 24 hours. CDC COVID-19 counts from previous dates may be continually revised as more records are received and processed. Not all jurisdictions report counts daily, some counts are reported in batches and may increase COVID-19 case and death counts at different intervals and appear as spikes. The process used for finding and confirming COVID-19 cases displayed by other sites may differ.

HAVE QUESTIONS?

- Visit CDC-INFO
- Call 800-232-4636
- Email CDC-INFO
- Open 24/7

CDC INFORMATION

- About CDC
- Jobs
- Funding
- Policies
- File Viewers & Players

Privacy

- FOIA
- No Fear Act
- OIG
- Nondiscrimination
- Accessibility

CONNECT WITH CDC

- Facebook
- Twitter
- Instagram
- LinkedIn
- YouTube
- Podcast
- RSS
- Email