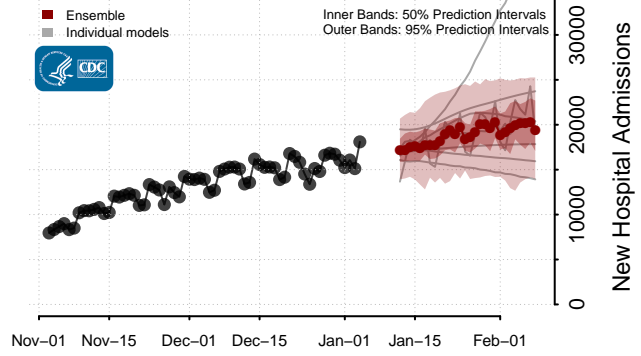
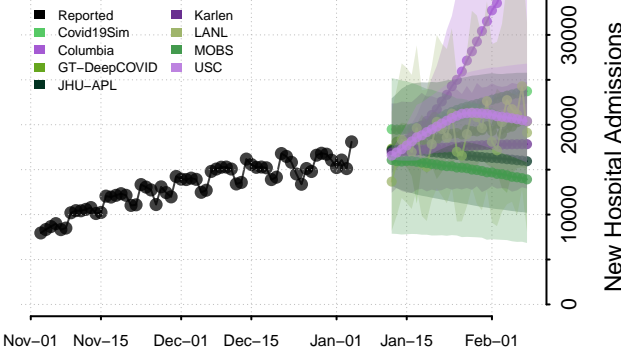
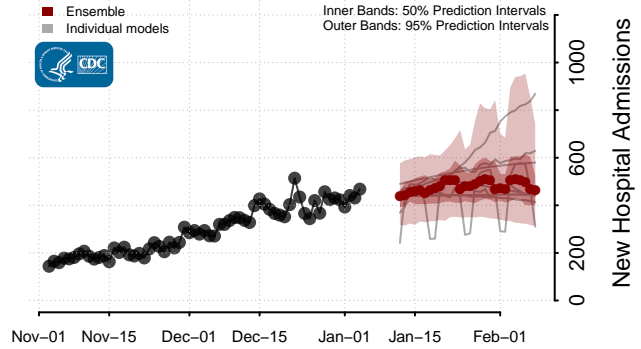
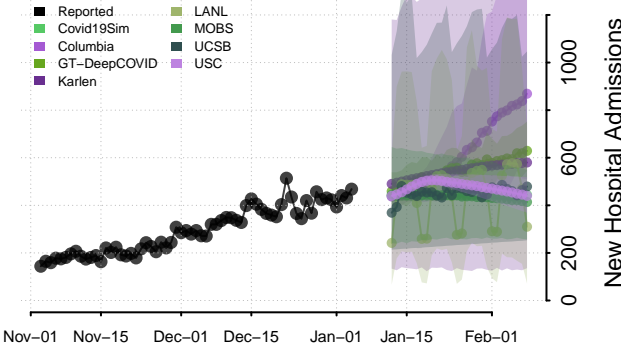


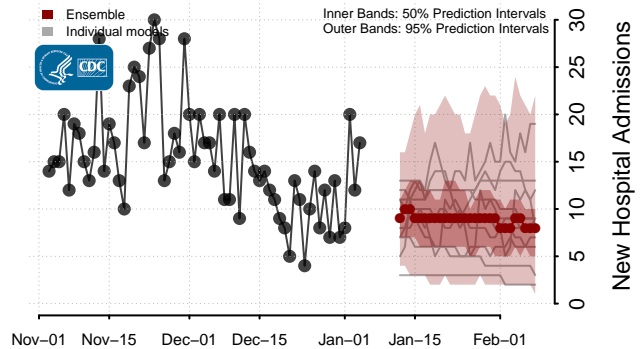
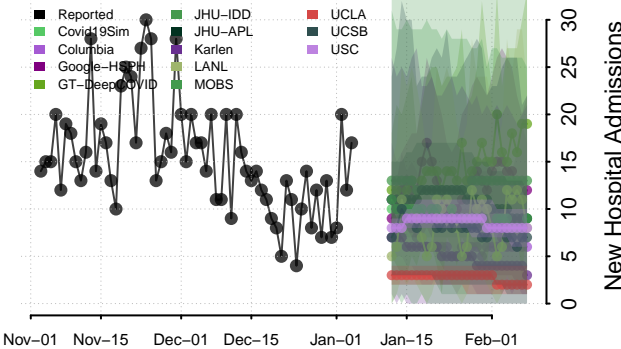
National**



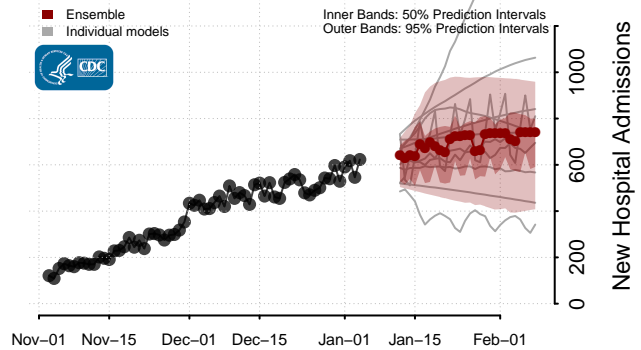
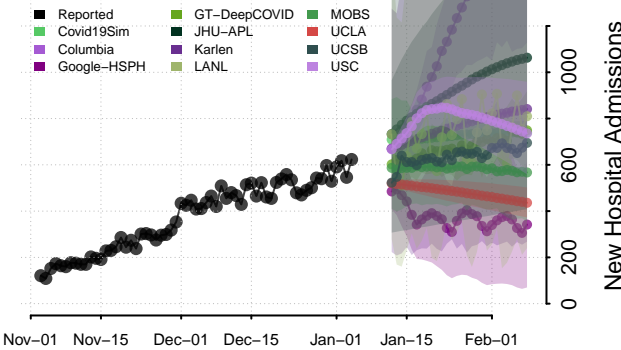
Alabama



Alaska

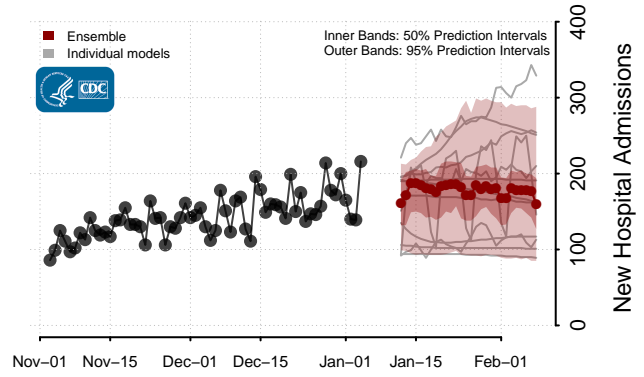
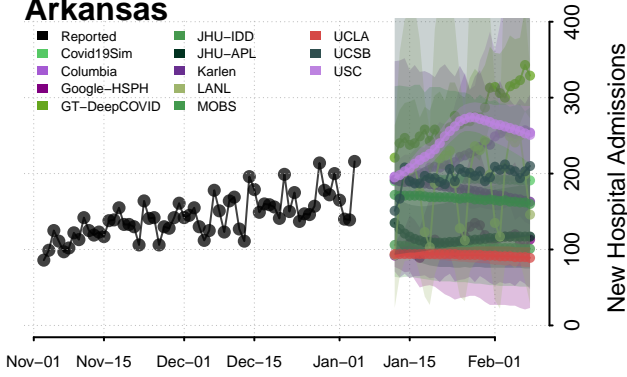


Arizona

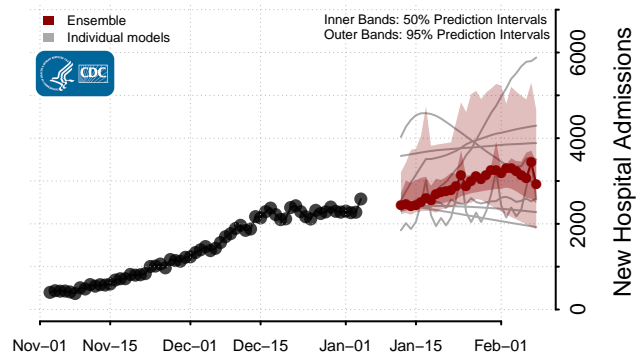
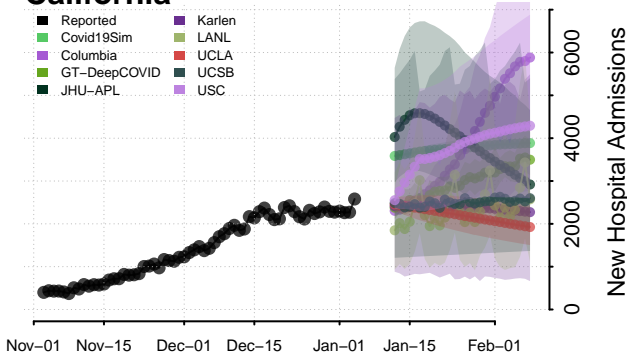


**New daily confirmed COVID-19 hospital admissions may increase in this location over the next four weeks. For these locations, the ensemble forecast indicates a median daily probability of 0.75 or greater that more hospital admissions will be reported in the last seven days of the forecast than the median in the last seven days of reported data.

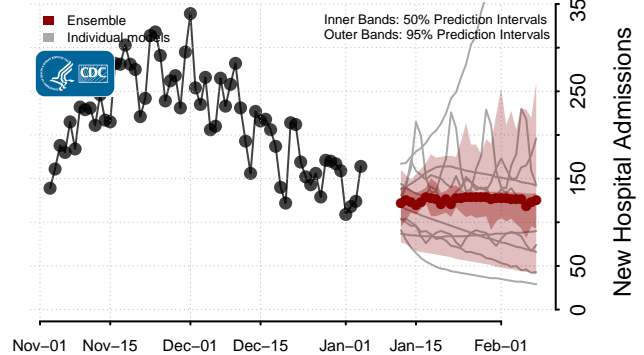
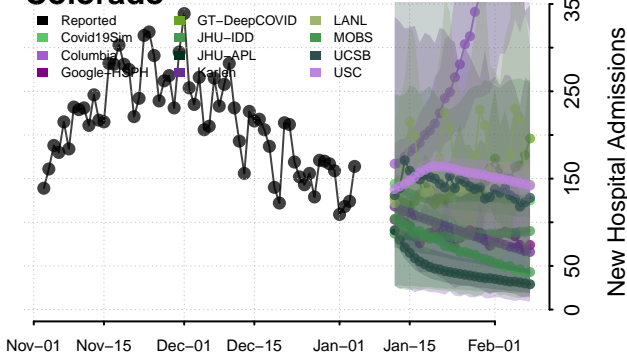
Arkansas



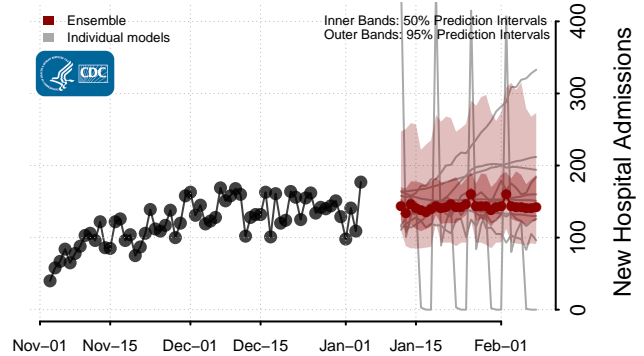
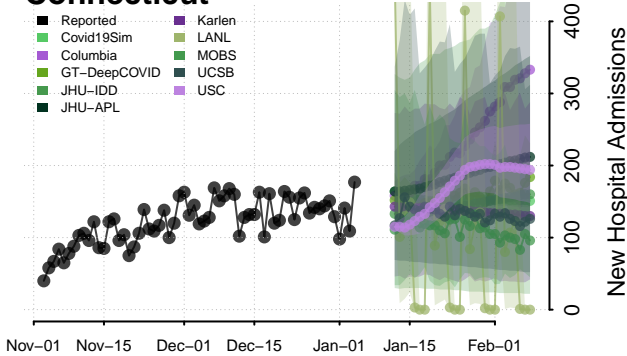
California**



Colorado*



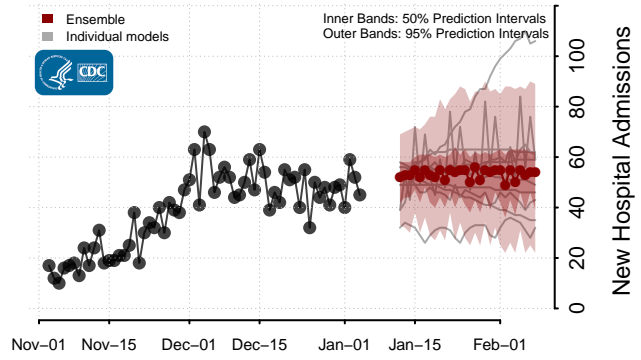
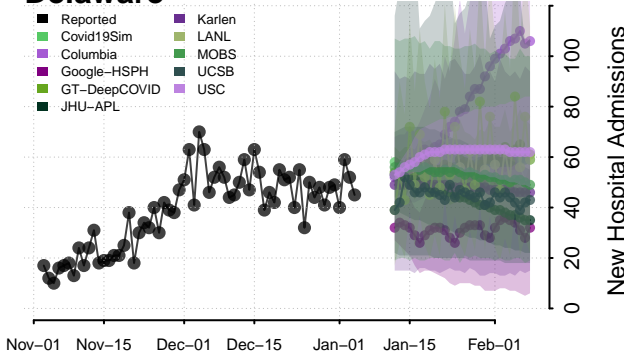
Connecticut



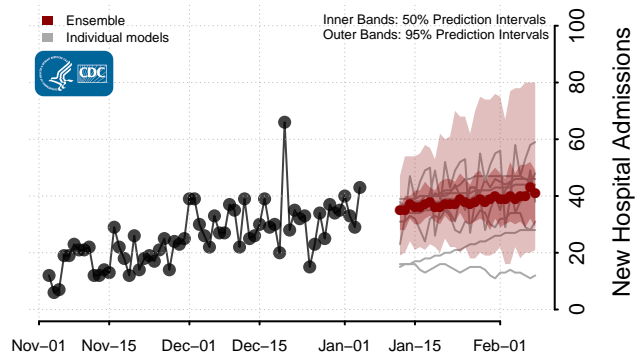
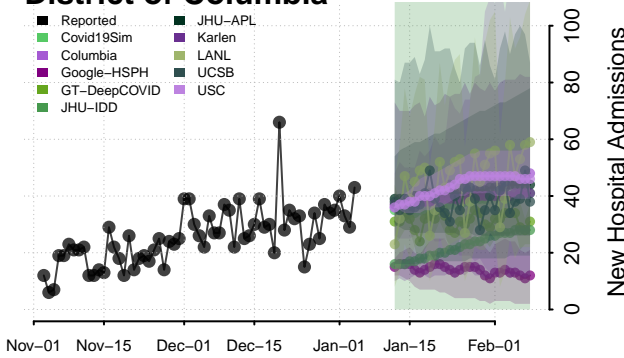
*New daily confirmed COVID-19 hospital admissions may decrease in this location over the next four weeks. For these locations, the ensemble forecast indicates a median daily probability of 0.75 or greater that fewer hospital admissions will be reported in the last seven days of the forecast than the median in the last seven days of reported data.

**New daily confirmed COVID-19 hospital admissions may increase in this location over the next four weeks. For these locations, the ensemble forecast indicates a median daily probability of 0.75 or greater that more hospital admissions will be reported in the last seven days of the forecast than the median in the last seven days of reported data.

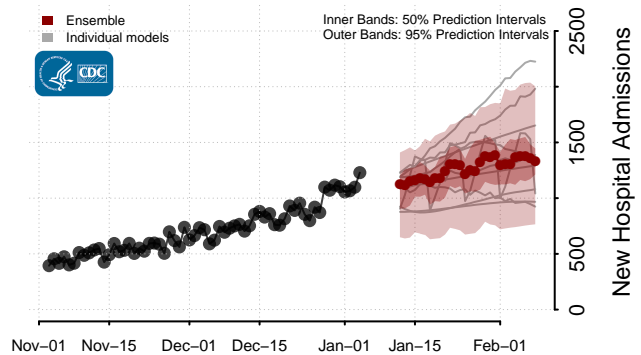
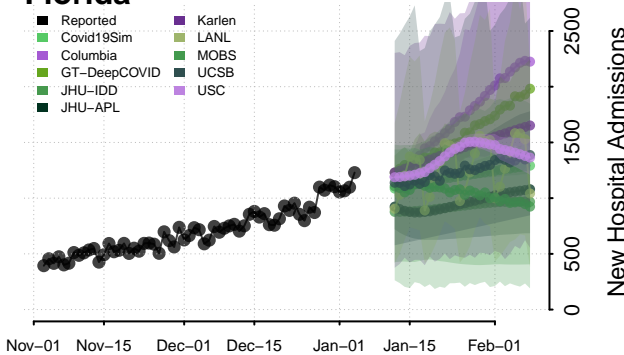
Delaware



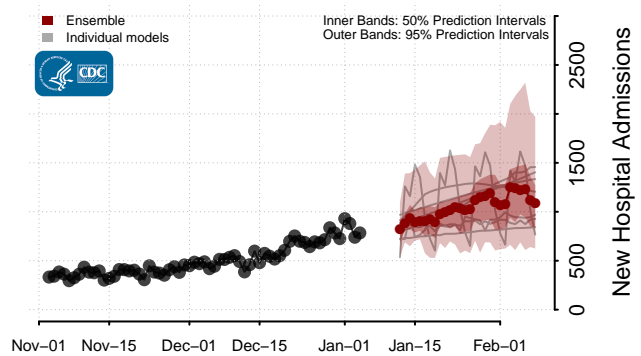
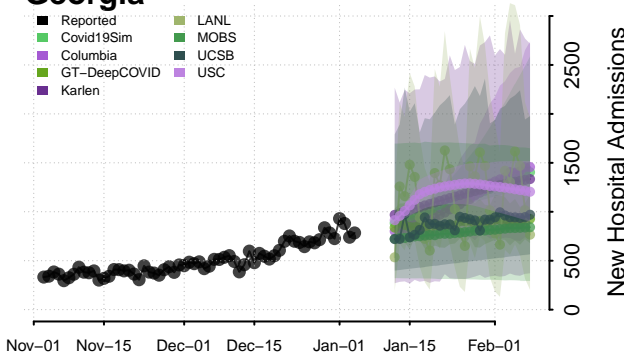
District of Columbia



Florida**

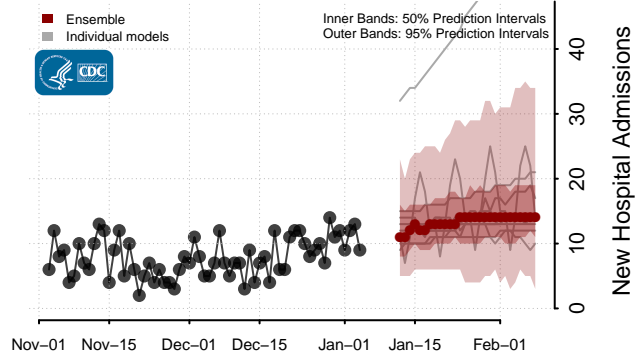
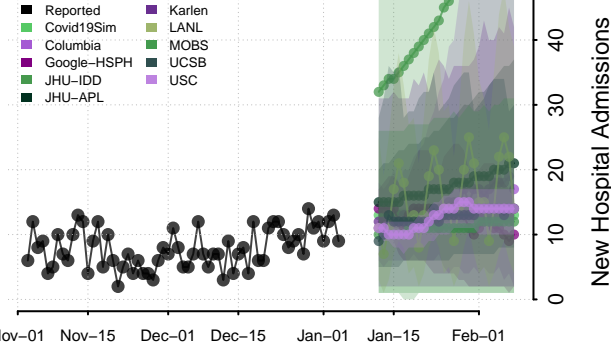


Georgia**

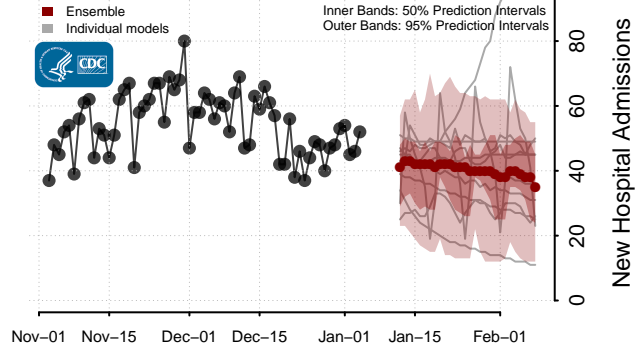
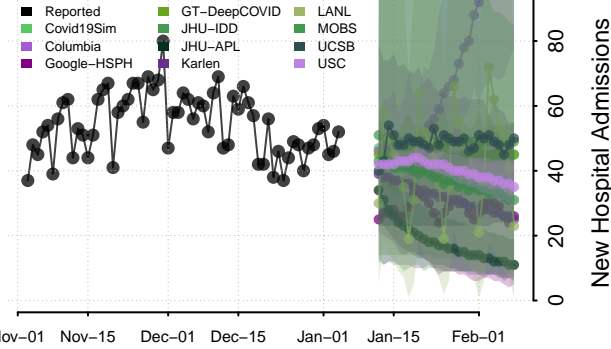


**New daily confirmed COVID-19 hospital admissions may increase in this location over the next four weeks. For these locations, the ensemble forecast indicates a median daily probability of 0.75 or greater that more hospital admissions will be reported in the last seven days of the forecast than the median in the last seven days of reported data.

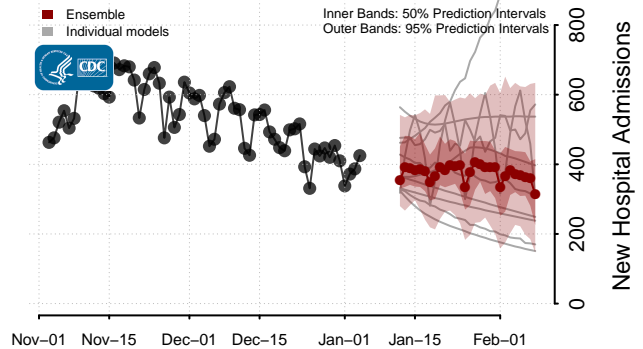
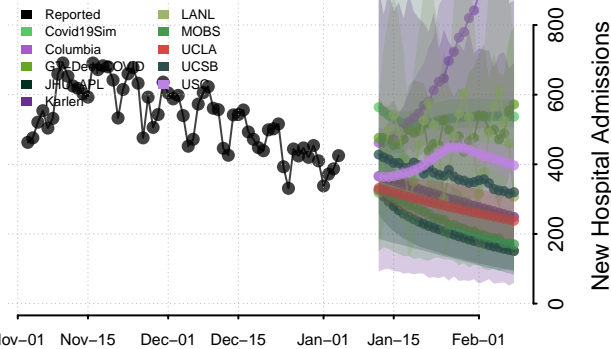
Hawaii



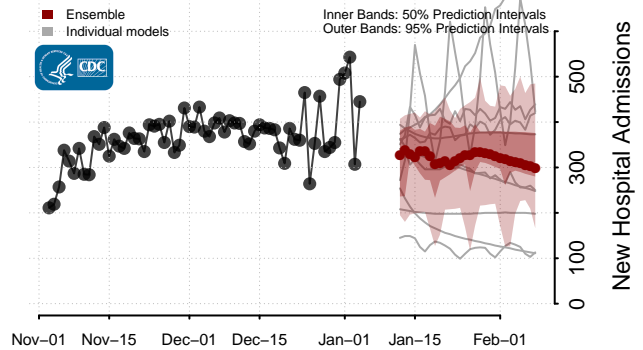
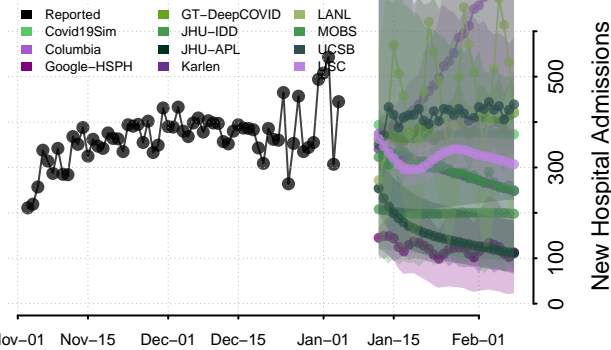
Idaho

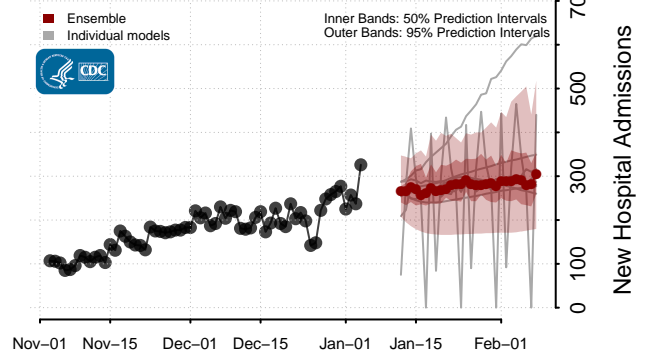
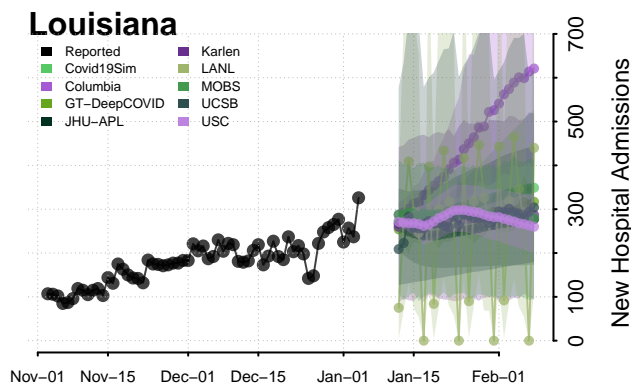
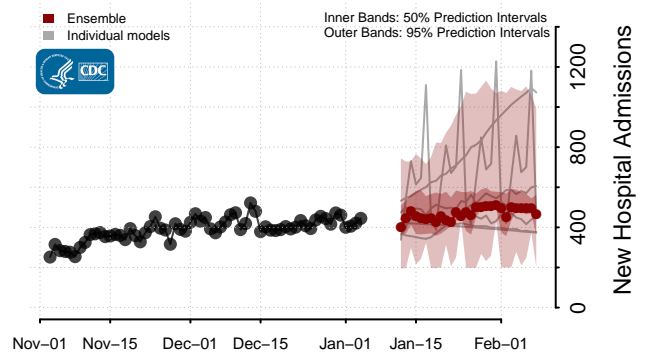
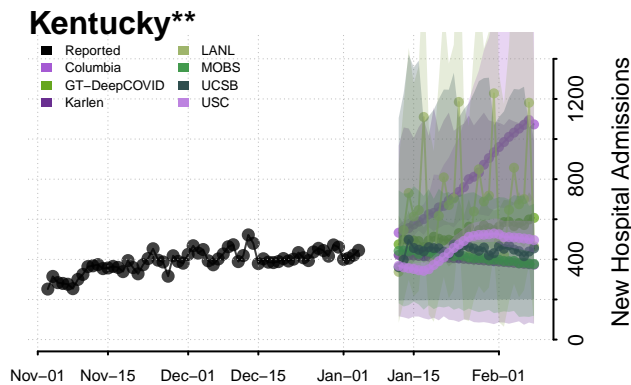
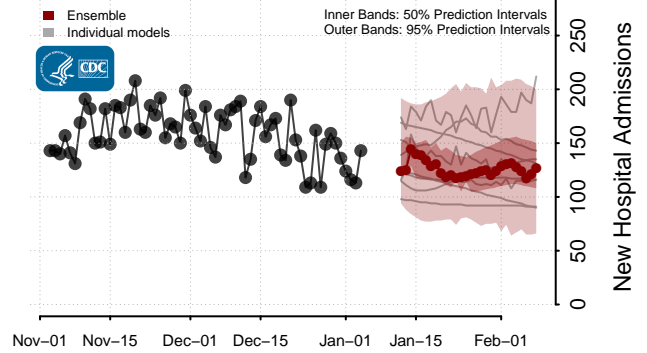
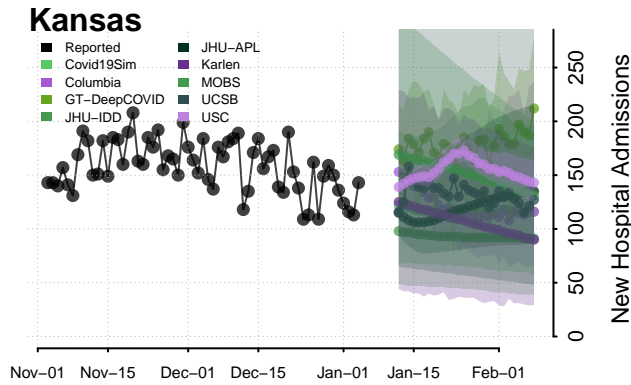
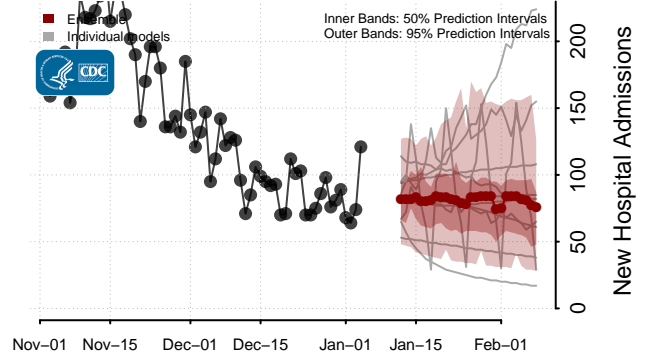
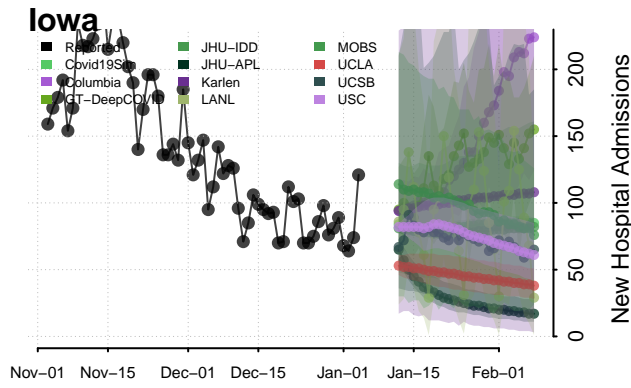


Illinois



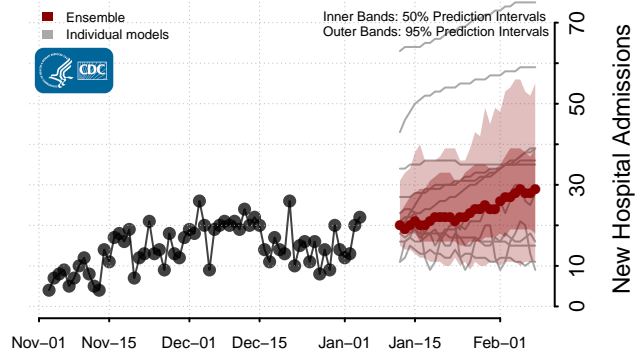
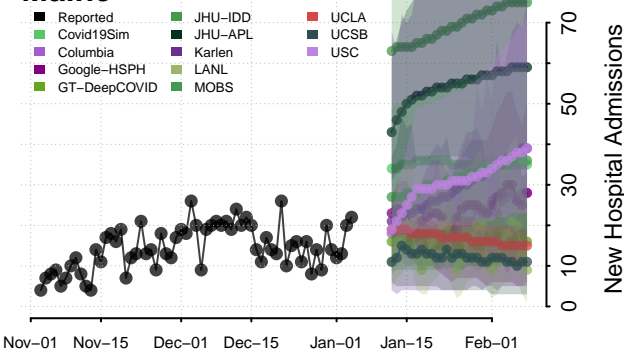
Indiana



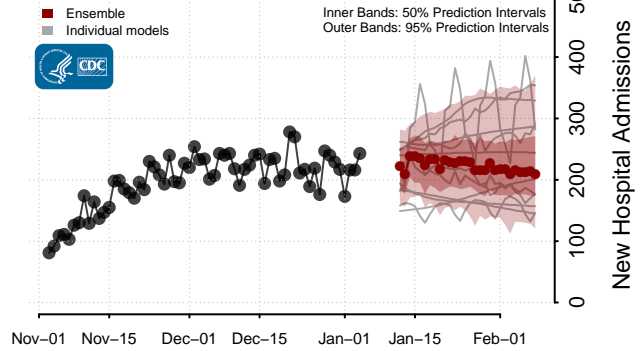
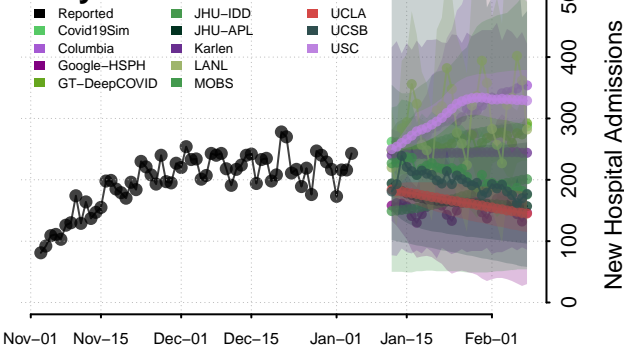


**New daily confirmed COVID-19 hospital admissions may increase in this location over the next four weeks. For these locations, the ensemble forecast indicates a median daily probability of 0.75 or greater that more hospital admissions will be reported in the last seven days of the forecast than the median in the last seven days of reported data.

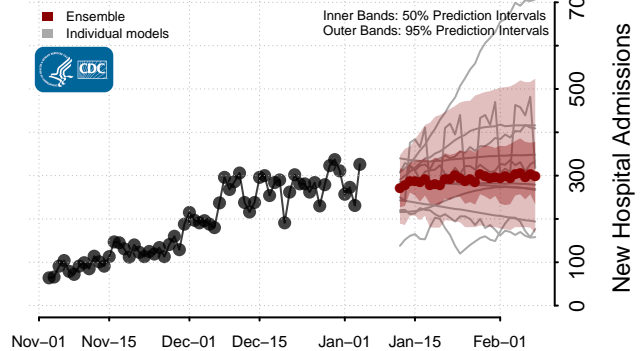
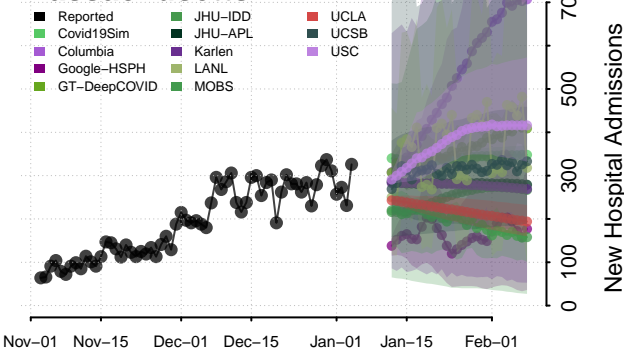
Maine



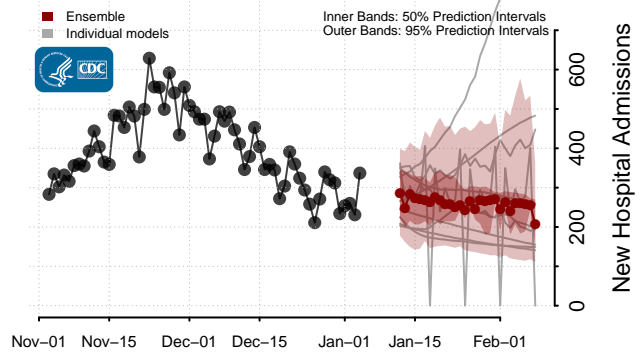
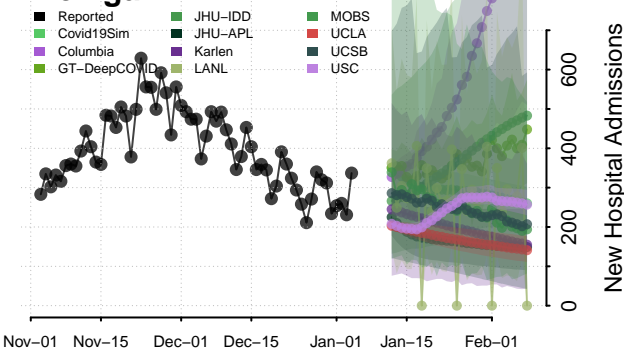
Maryland



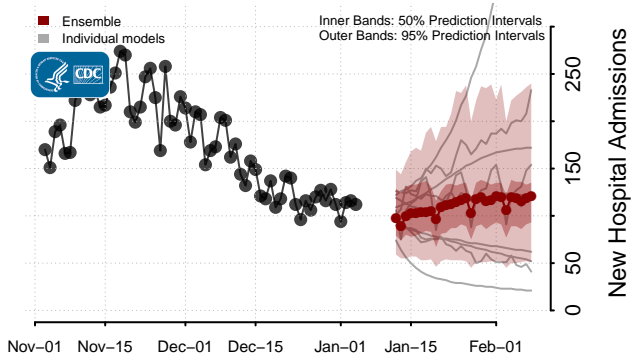
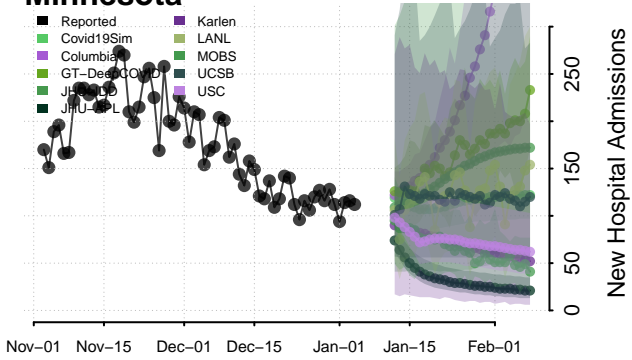
Massachusetts



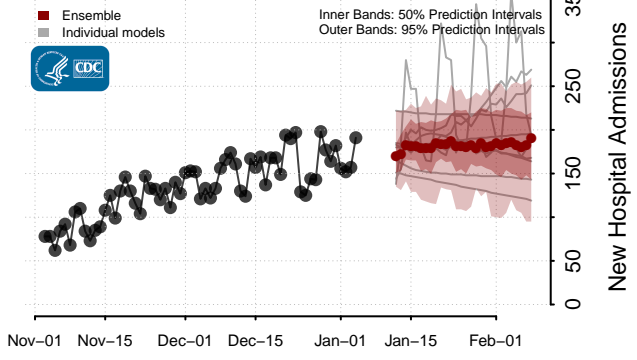
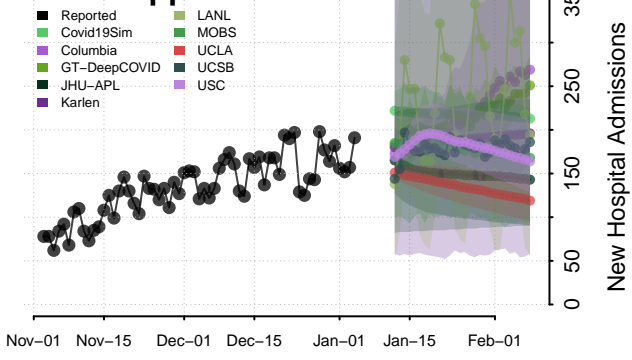
Michigan



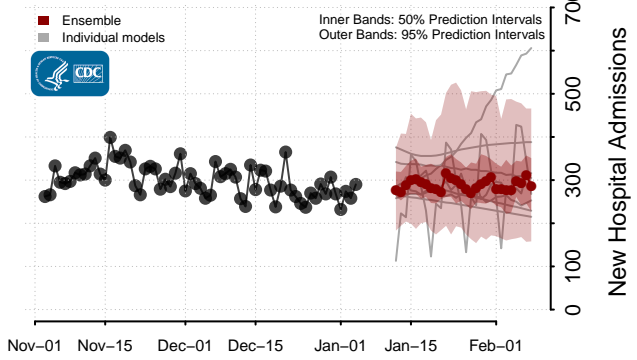
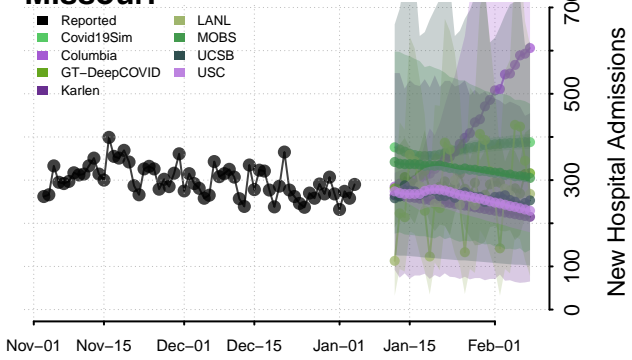
Minnesota



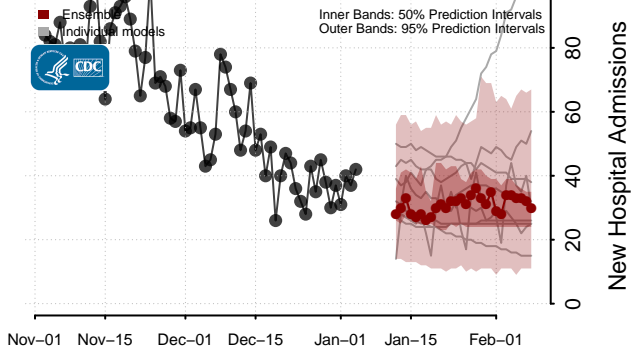
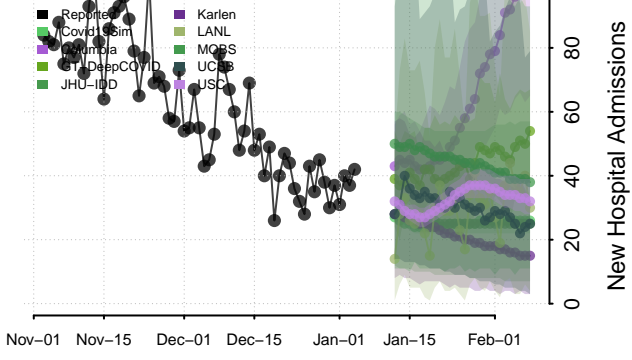
Mississippi

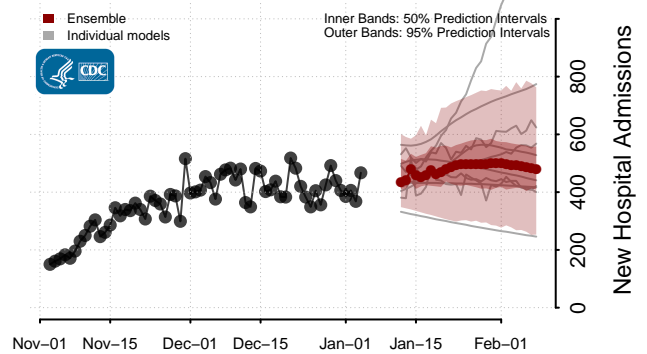
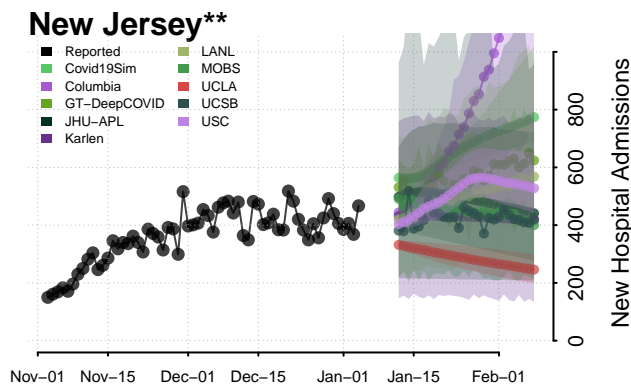
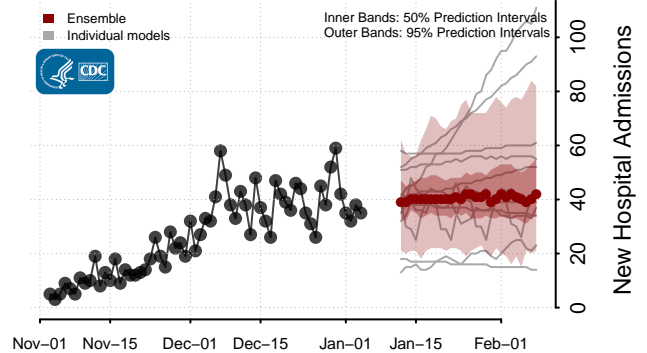
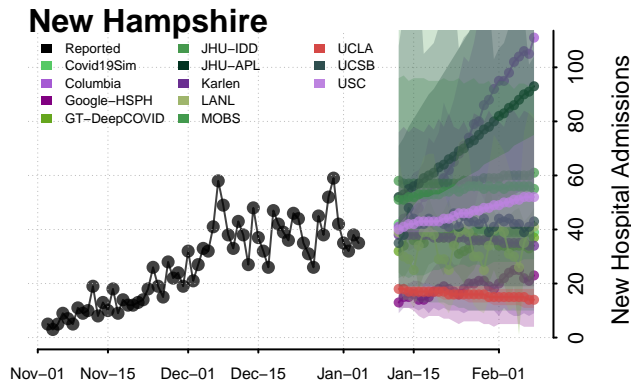
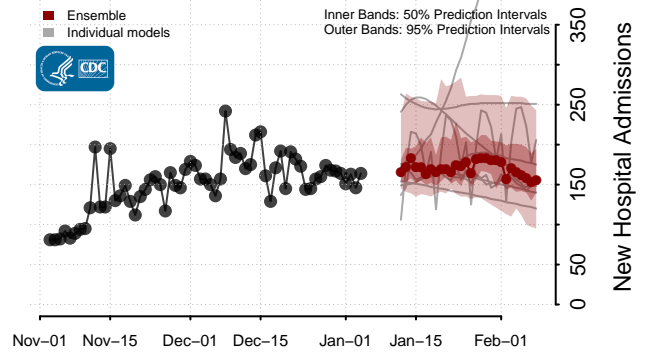
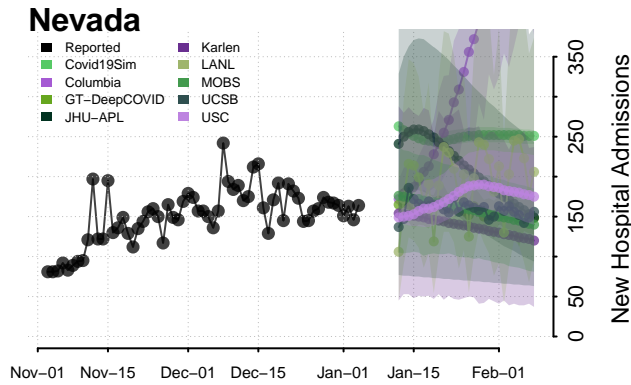
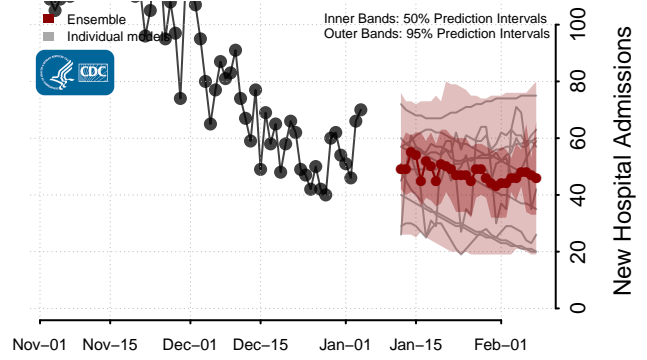
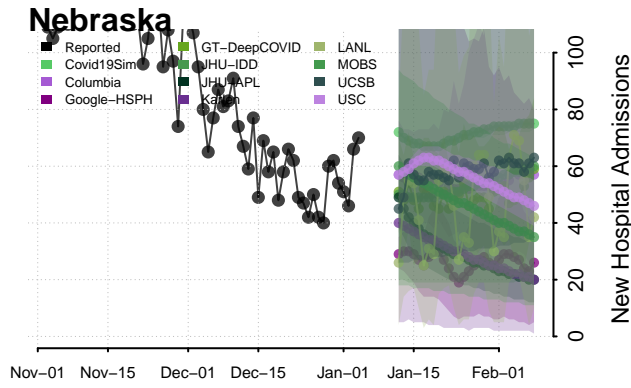


Missouri



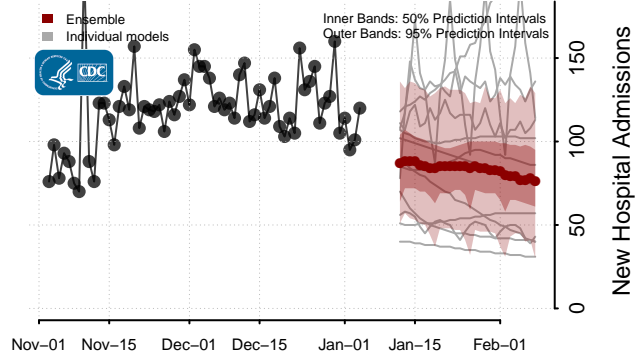
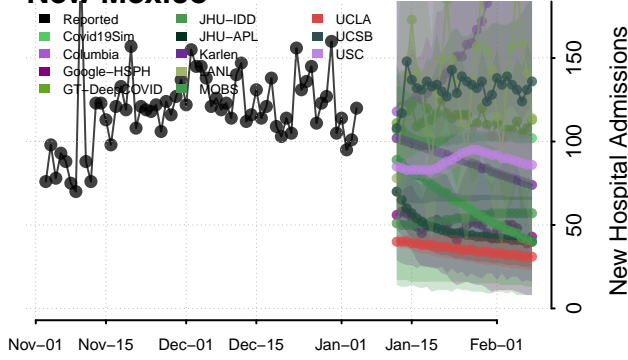
Montana



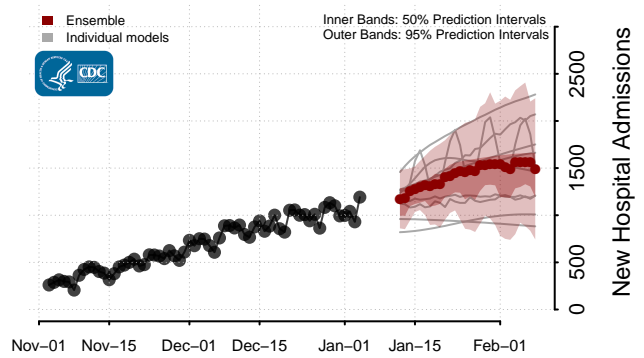
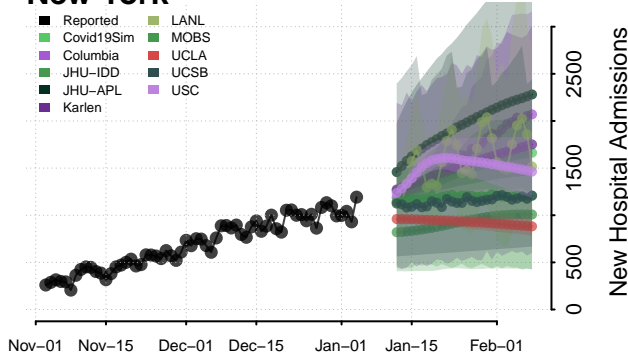


**New daily confirmed COVID-19 hospital admissions may increase in this location over the next four weeks. For these locations, the ensemble forecast indicates a median daily probability of 0.75 or greater that more hospital admissions will be reported in the last seven days of the forecast than the median in the last seven days of reported data.

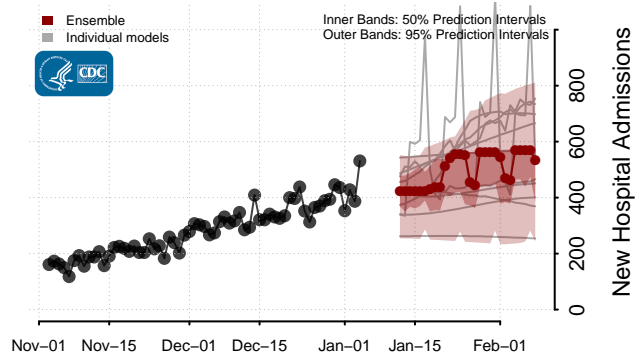
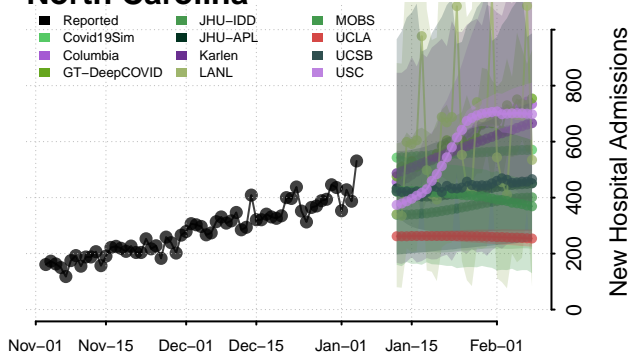
New Mexico*



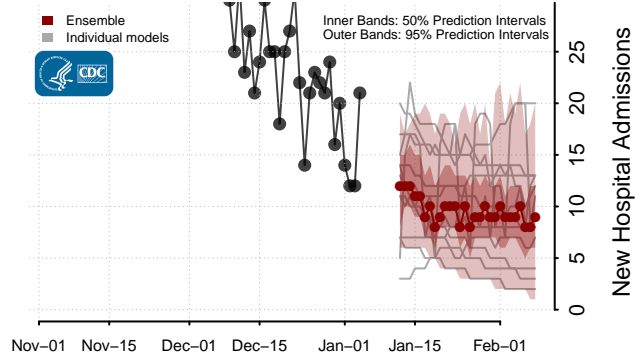
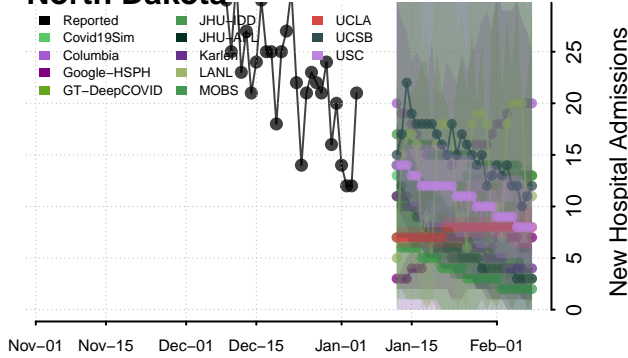
New York**



North Carolina**



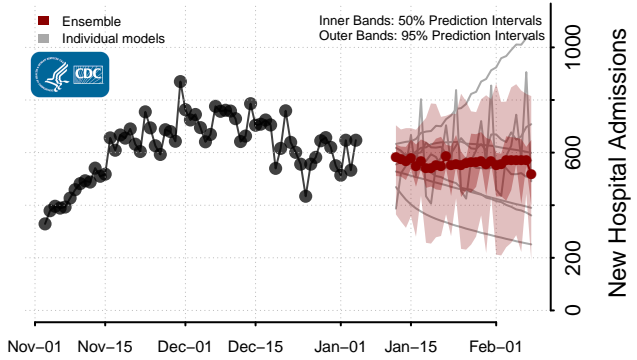
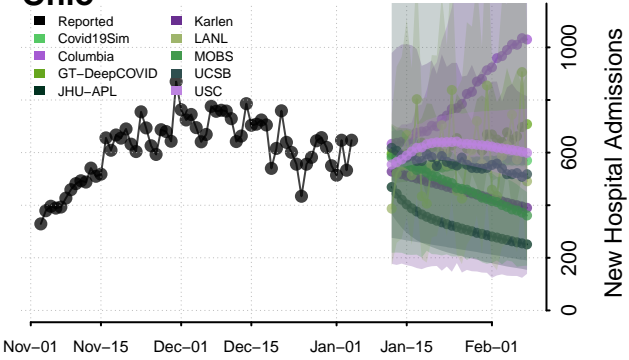
North Dakota*



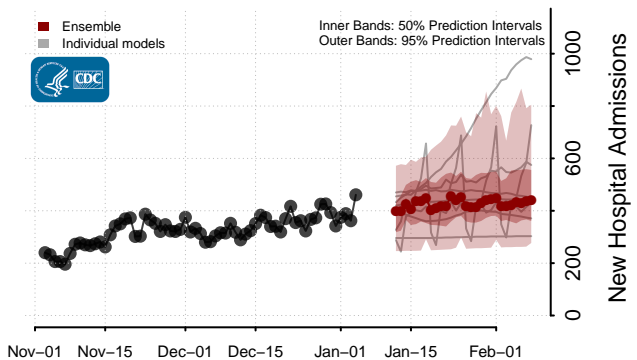
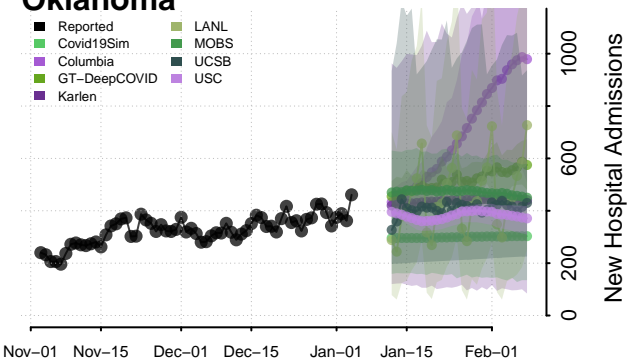
*New daily confirmed COVID-19 hospital admissions may decrease in this location over the next four weeks. For these locations, the ensemble forecast indicates a median daily probability of 0.75 or greater that fewer hospital admissions will be reported in the last seven days of the forecast than the median in the last seven days of reported data.

**New daily confirmed COVID-19 hospital admissions may increase in this location over the next four weeks. For these locations, the ensemble forecast indicates a median daily probability of 0.75 or greater that more hospital admissions will be reported in the last seven days of the forecast than the median in the last seven days of reported data.

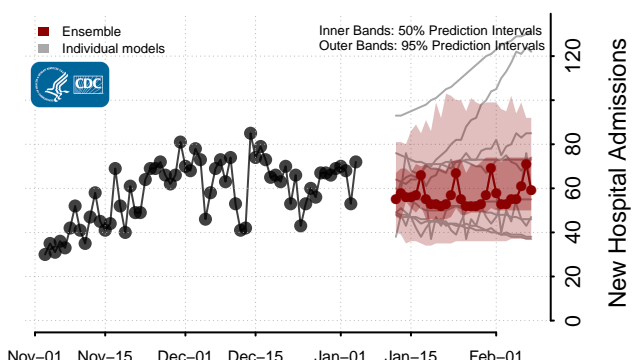
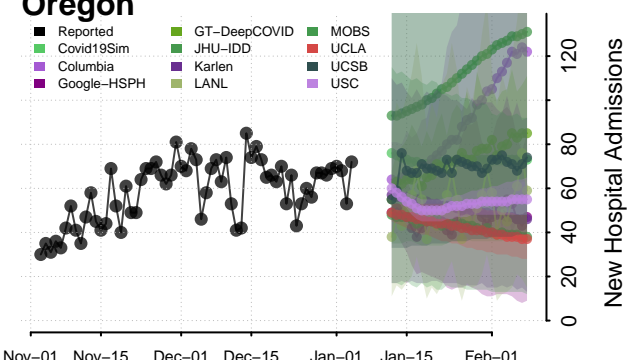
Ohio



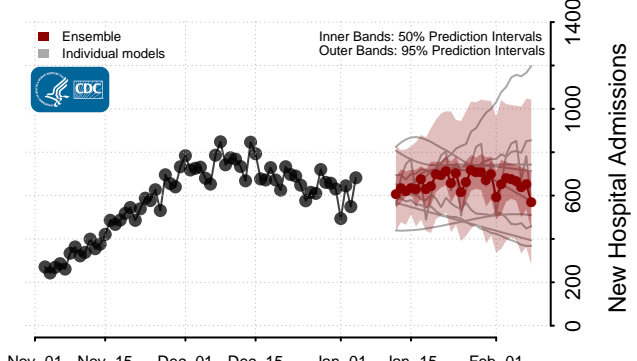
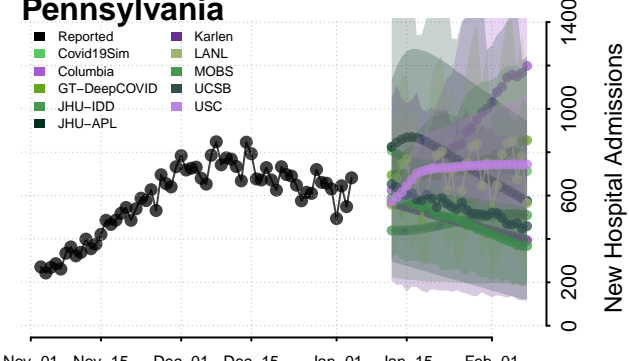
Oklahoma

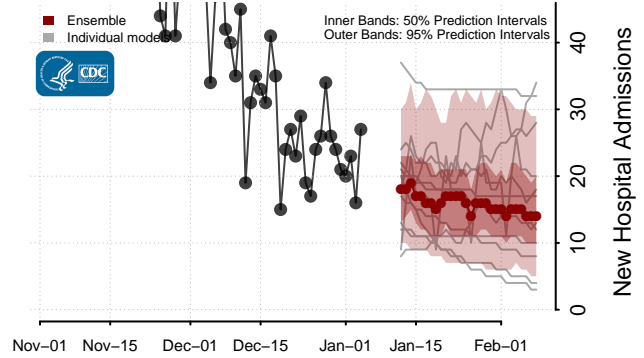
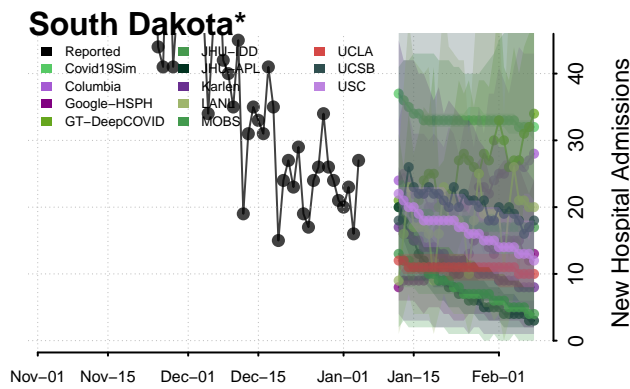
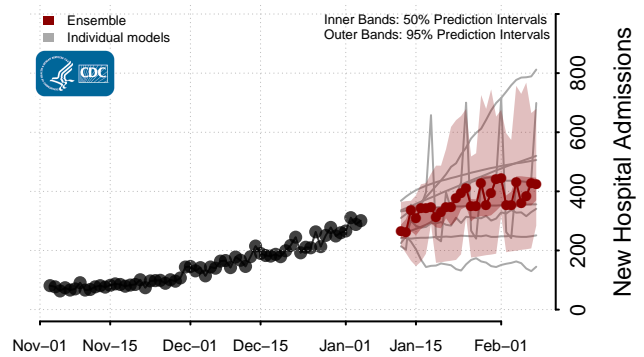
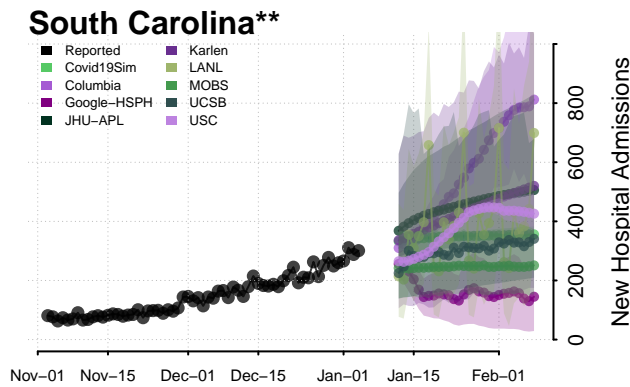
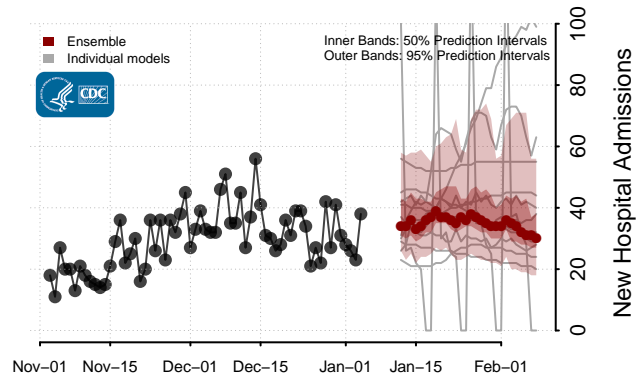
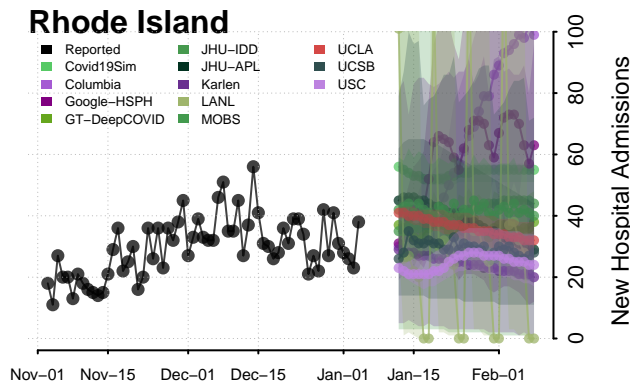
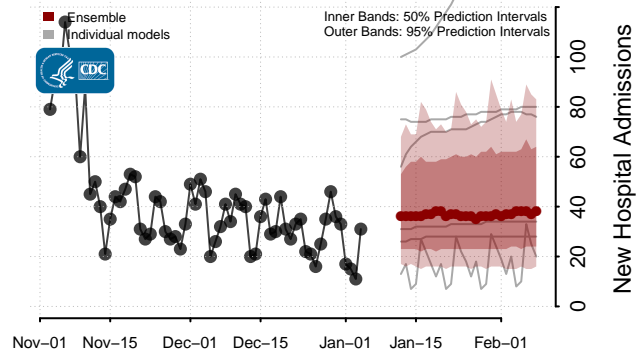
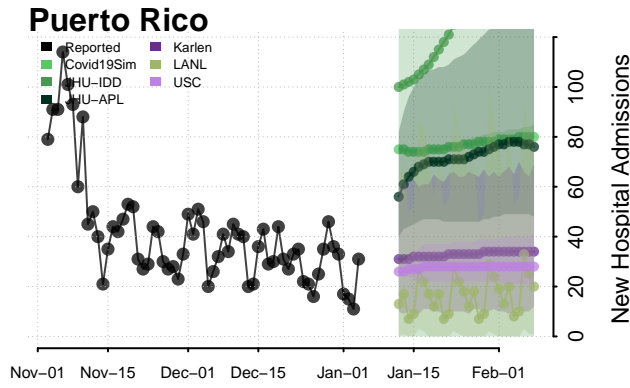


Oregon



Pennsylvania

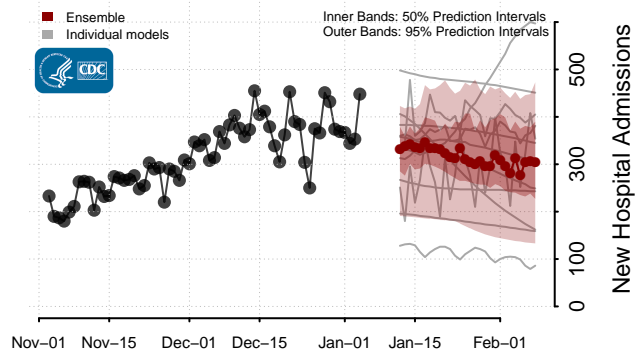
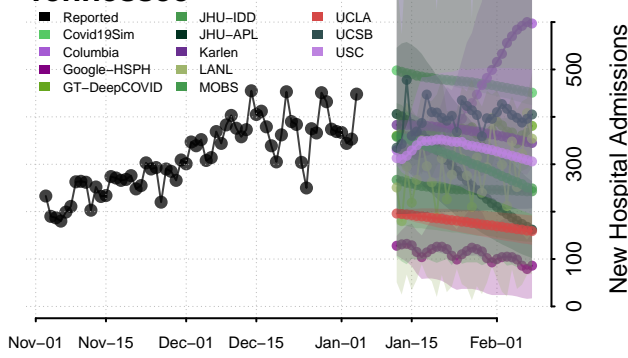




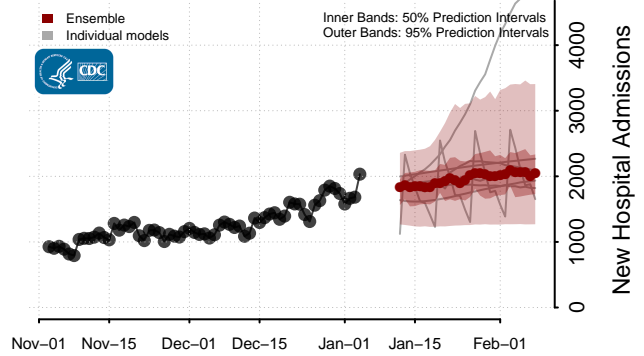
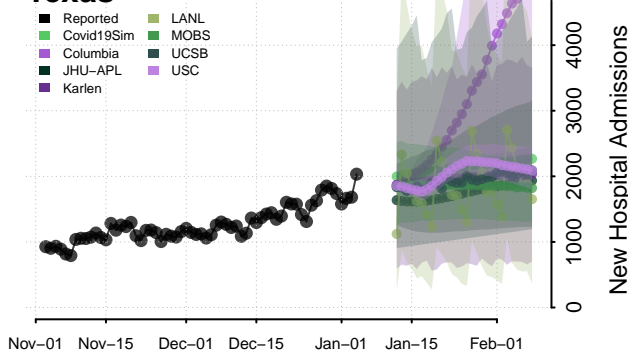
*New daily confirmed COVID-19 hospital admissions may decrease in this location over the next four weeks. For these locations, the ensemble forecast indicates a median daily probability of 0.75 or greater that fewer hospital admissions will be reported in the last seven days of the forecast than the median in the last seven days of reported data.

**New daily confirmed COVID-19 hospital admissions may increase in this location over the next four weeks. For these locations, the ensemble forecast indicates a median daily probability of 0.75 or greater that more hospital admissions will be reported in the last seven days of the forecast than the median in the last seven days of reported data.

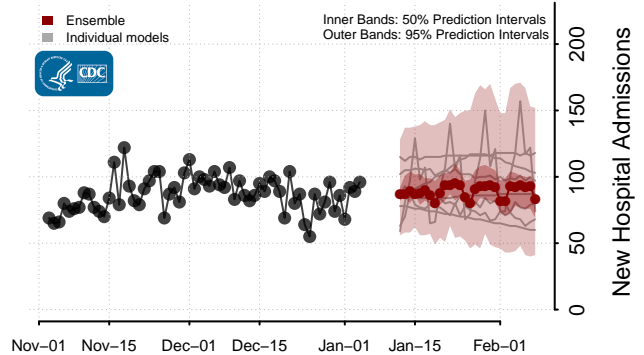
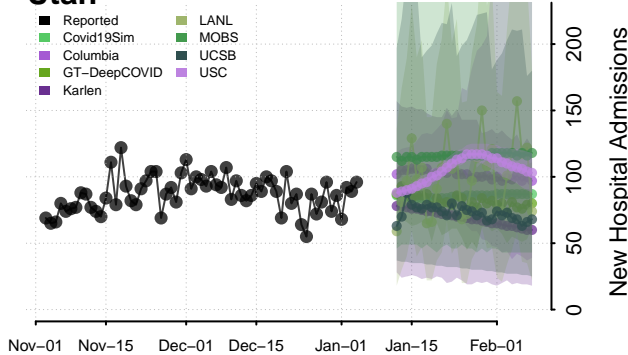
Tennessee



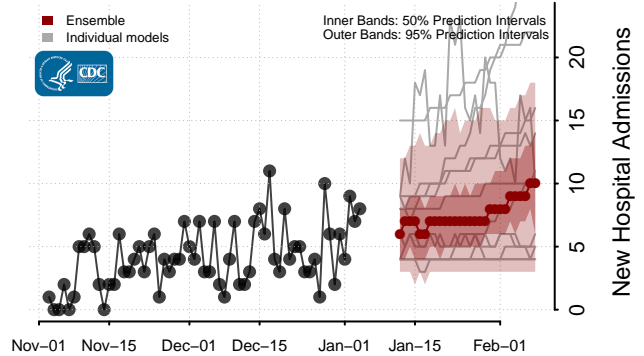
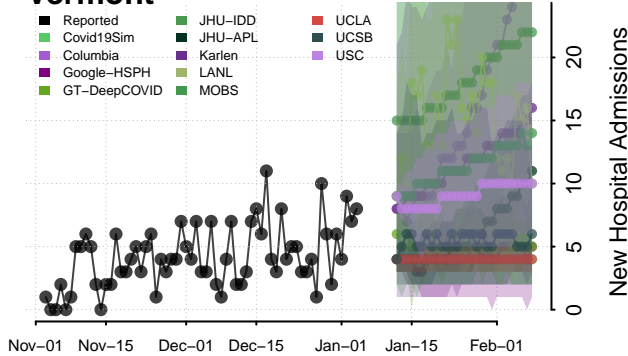
Texas



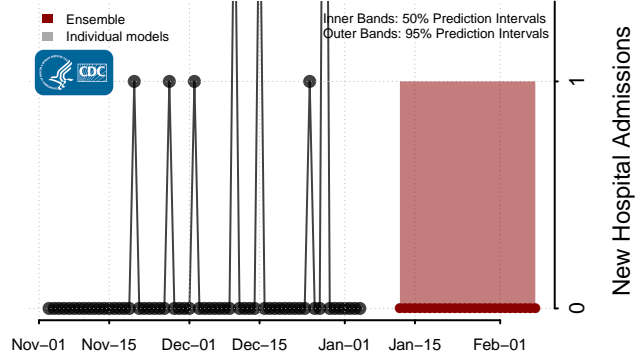
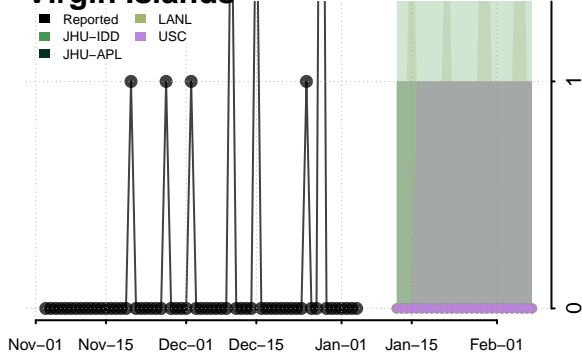
Utah



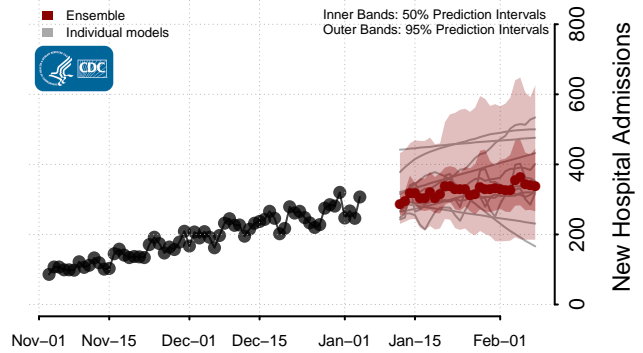
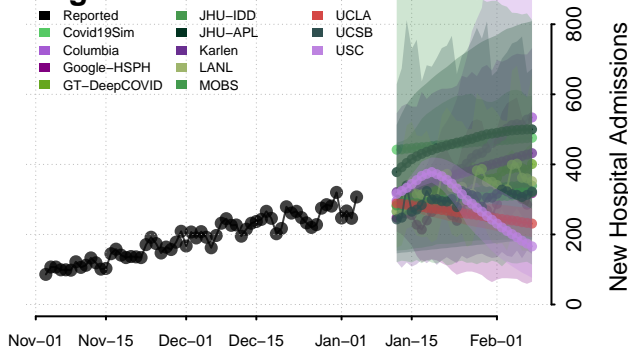
Vermont



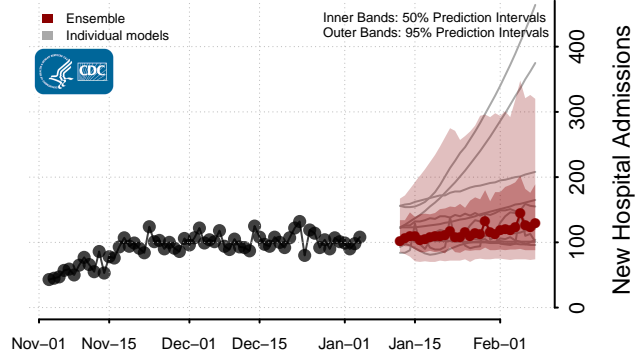
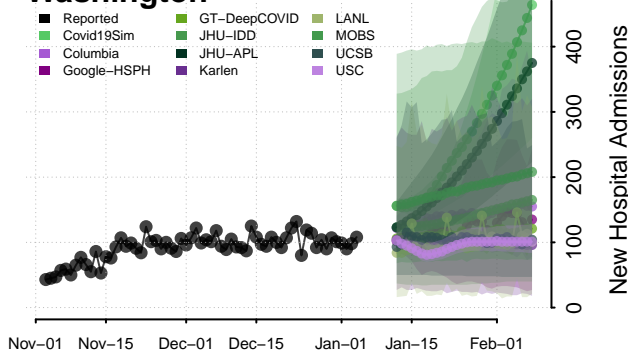
Virgin Islands



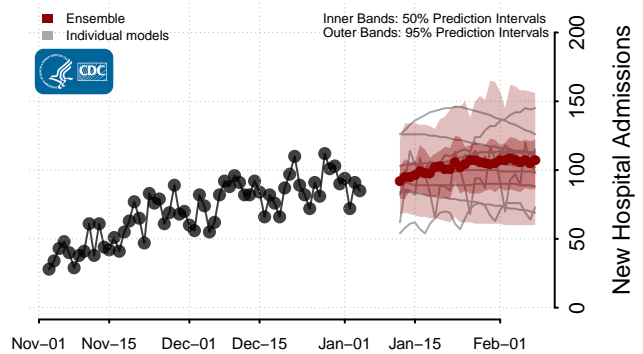
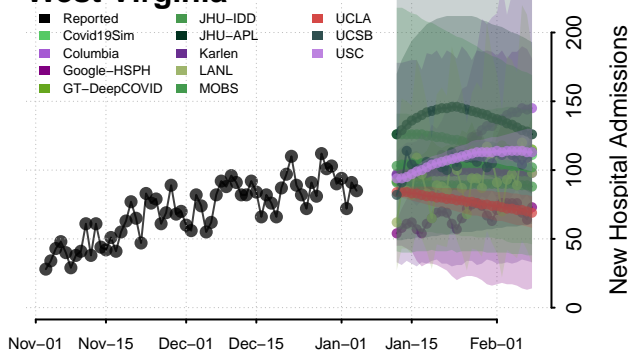
Virginia



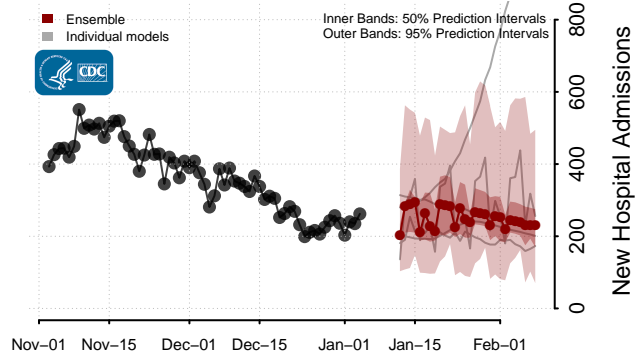
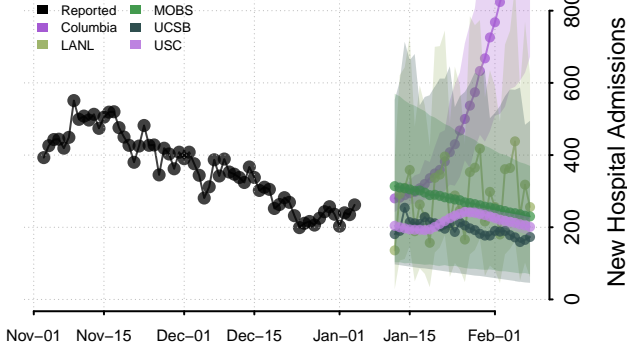
Washington



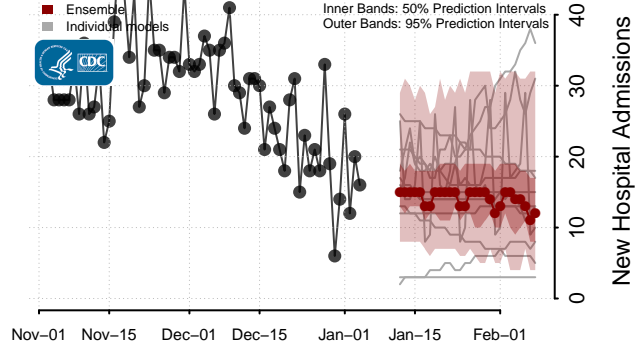
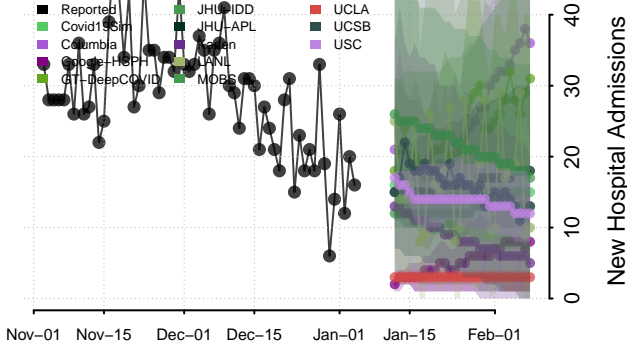
West Virginia



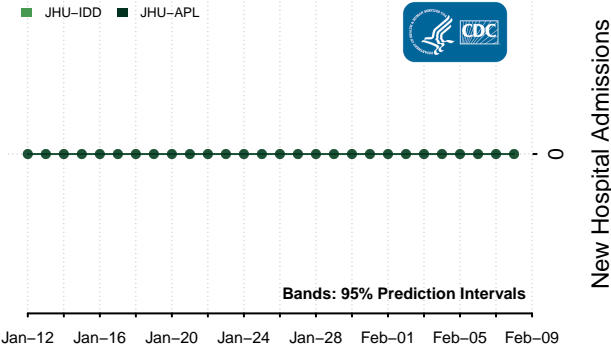
Wisconsin



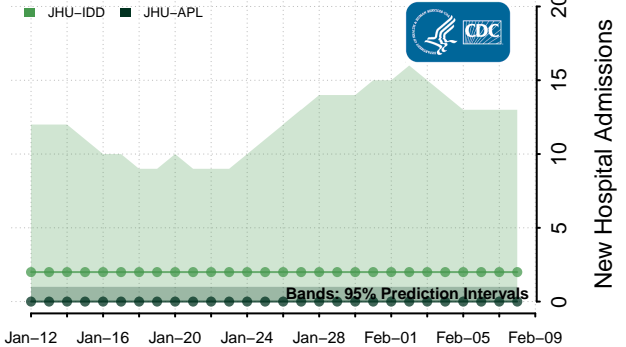
Wyoming



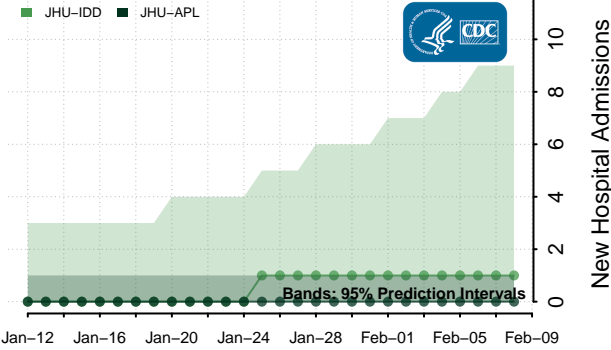
American Samoa***



Guam***



Northern Mariana Islands***



***The daily number of new COVID-19 hospital admissions are not reported for this jurisdiction